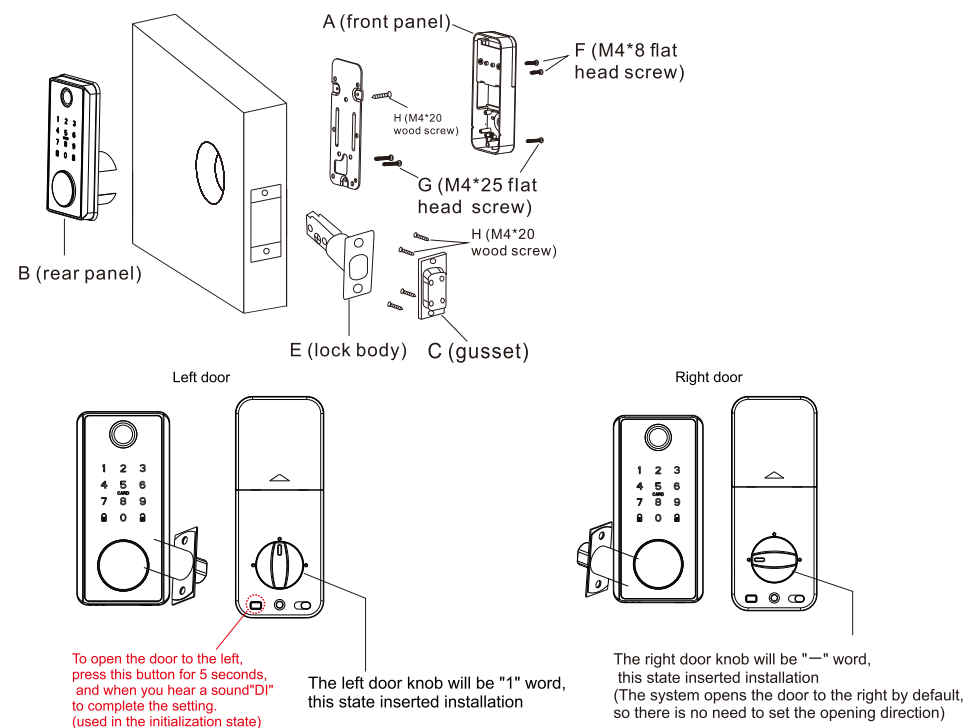
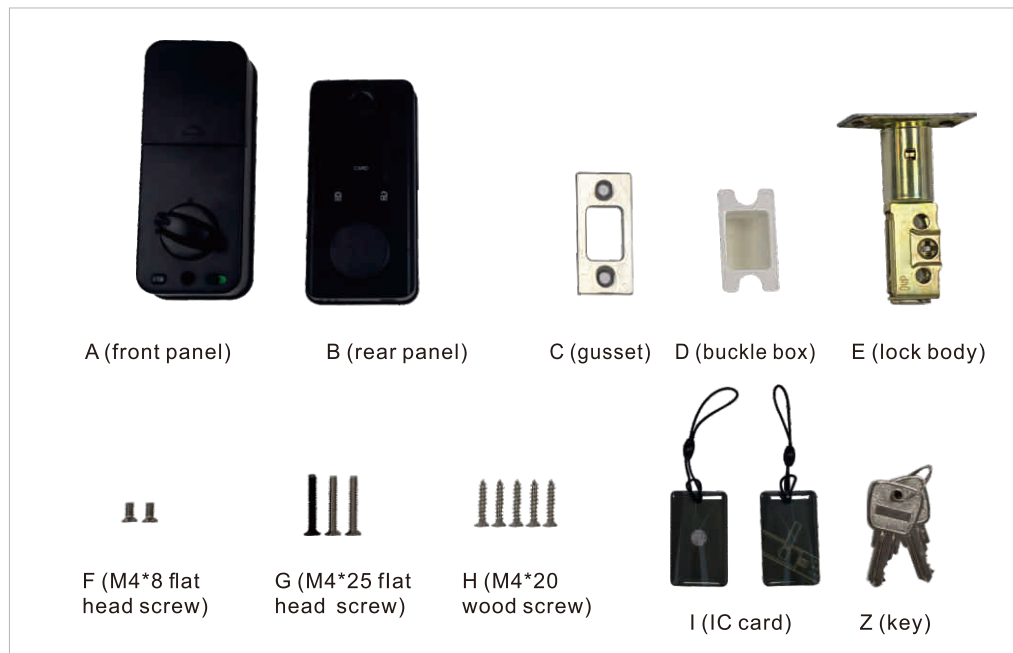




# Smart Lock

## Installation Manual





## —. Install the door lock



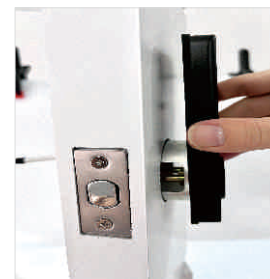
Use self-tapping screws to fix the lock body gusset box to the lock body small hole downward ↓As shown in Figure 1



Remove the built-in screws on the rear panel and take off the built-in board



Insert the cable into the connector



Align the front panel vertically with the hole and insert it into the lock body (the lock ruler is inserted in a "1" shape)



Align the holes of the built-in board and fix them with flat head screws



The deadbolt is on the right side of your installation and the knob arrow is up. The deadbolt is on the left side of your installation, the knob arrow goes down



The connecting wire must pass under the lock body



Tighten the screws after keeping the built-in board and the front panel vertical



Align the lock ruler and insert and fix the screw



After the installation is completed, the front panel and the rear panel are kept in a vertical line, and then insert the key to test whether the switch lock is smooth.



Remove the battery cover, install AAA1.5v batteries, and close the battery cover.



After installing the battery, please test whether the left and right door opening positions are correct. If the switch direction is opposite, please wake up the screen and input "666888#" and hear a long "beep", which means that the direction switch is not successful.

\*(Note that the switch must be initialized without registering an administrator, and the switch will be invalid after entering the administrator)

## Part 1: Local operation instructions of the smart lock

The first three password users or card and fingerprint users registered first after the product is initialized are the administrators by default. For example, an administrator has been registered in the smart lock. Adding and removing users again requires the administrator to be authenticated first;

When no user is entered, any fingerprint and initial password 123456 can be unlocked. After registering the fingerprint or password card, the illegal fingerprint and password card will not be unlocked:1. Add fingerprint, password and card locally on the lock end:

### 1. Add fingerprint, password and card locally on the lock end:

1. Press any button to wake up the system, press the "1" + "#" button, the blue light of the fingerprint lamp flashes, and the voice prompts "Please Verify administrator" (if no fingerprint or password has been entered, use any fingerprint or the default password "123456" to verify). If the verification is successful, the voice prompts "Please start to enter", and enter the fingerprint, password or card you want to set. Enter. If successful, the green light will flash once, and the voice prompt "Please enter again". If the entry fails, the red light will flash once, and the green light will be solid on and the voice prompt "Enter successfully", indicating that it has been added successfully.

### 2. The lock end locally deletes all fingerprints, passwords, door cards and Bluetooth data:

1. Press any key to wake up the system, press the "888" + "#" key, the red light of the fingerprint light flashes, and the voice prompts "Please verify the administrator" (if no fingerprint or password has been entered, use any fingerprint or default password

"123456" verification). If the verification is successful, start to restore the factory settings, the restore is successful, the green light is on for 1 second, and the voice prompts "factory reset is successful", and all fingerprints, passwords, key cards and Bluetooth binding data are deleted.

2. Forcibly restore the factory settings, remove the rear panel screws (K.L), press and hold the reset button on the rear panel for 5 seconds, the red light of the fingerprint light flashes, release, the light turns green, and the voice prompts "restore to factory settings successful", all Fingerprints, passwords, key cards and Bluetooth binding data are deleted.

### 3. Lock-end local volume adjustment

1. Press any key to wake up the system, press the "21" + "#" key, the blue and blue light of the fingerprint light flashes, and the voice prompts "Please verify the administrator" (if the fingerprint or password has not been entered, use any arbitrary fingerprint or default Password "123456" verify). After the verification is successful, the fingerprint light turns green and makes a beep to adjust the volume:0 mute 1 low volume 2 medium volume 3 high volume;

## 4. Product parameters and detailed description

No.	Function	Content	Detailed description
1	Howtounlock	Fingerprint+password+iccard+key+mobilephonegraffitiAPP	
2	Numberofadministrators	3digits	The 3 groups entered in the front are defaulted to administrators
3	Numberofusers	197bits	Total capacity of 200 groups (including administrators)
4	Fingerprints	100pieces	Fingerprints need to be re-entered 5 times (please enter from multiple angles)
5	Password	100groups	The password needs to be entered twice with the "#" key to confirm (the 6-8 digit password must be the same twice)
6	Magneticcards	100sheets	The card can be entered once;
7	Dummypasswordlength	≤16bits	This product has a virtual anti-peeping password: you can enter garbled characters before and after the registered password
8	Lowvoltagealarm	4.7V±0.2V	When the voltage is lower than 47V, the red indicator light will continue to flash 5 times rapidly. And prompt "low battery, please replace the battery", can continue to unlock, when the voltage is lower than 45V, the red indicator light will continue to flash 5 times, can not unlock.
9	Quiescentcurrent	≤60uA	
10	Dynamiccurrent	>250mA	
11	Supplyvoltage	6V	The voltage when the new battery is fully charged (please choose a high-quality alkaline 1.5V battery)
12	Emergencypowersupply	5VDC	USB type-C interface
14	Operatingtemperature	-25℃~70℃	
15	Operatinghumidity	20%~90%RH	
16	VoiceNavigation	English/Chinesevoice	Wake up the keyboard and enter: "8899#" to quickly switch between Chinese and English after the administrator is successfully authenticated
17	Erroralarm	support	10 consecutive trial and error, lock for 1 minute
18	Electronicanti-lock	Admincanunlock	Push the lock button to electronically lock or unlock the lock. (After unlocking, the first three groups of administrators can unlock normally, but ordinary users cannot unlock and prompt: "The door is locked")
19	Quicklock	Quicklockoutsidethedoor	Click the "lock icon" on the panel to lock immediately
20	Wireddoorsensor	(Onlysupportsoptionalproducts)	After installing the door sensor, plug in the power cord and reinstall the battery, the door sensor will take effect, and the door sensor will automatically lock immediately when the door is closed: (or select the door sensor to activate or close on the APP)
21	fastsleep	numberkeyfastsleep	Long press the "#" key to quickly exit the system and hibernate

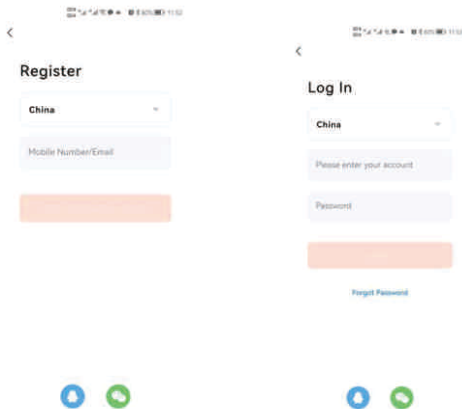
Reminder:Pleasestoreyourmechanicalkeyoutdoorsforbackup!

## Part II: Tuya APP Operation Instructions

### 1. APP installation (scan QR code)



Or search and download and install the "Tuya Smart" APP from the application market. After installation, follow the prompts to register and log in.

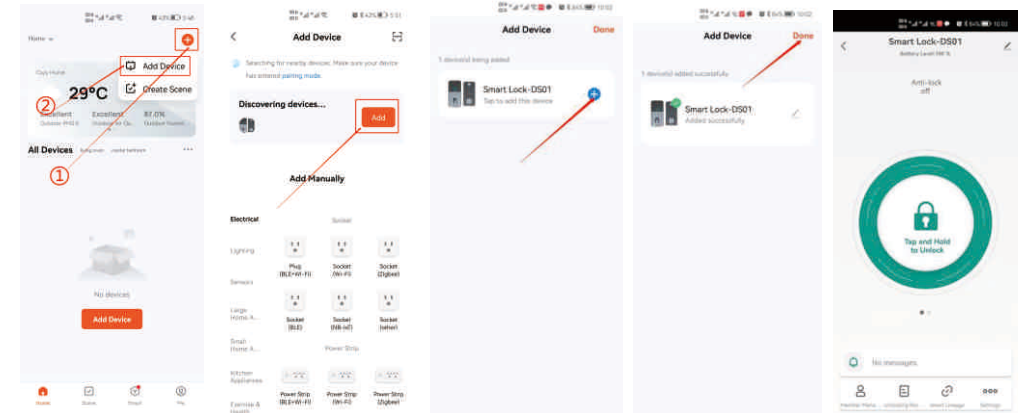


### 2. Distribution network connection lock

Start the distribution network process: If no fingerprint or password is entered, press any button or fingerprint to enter the distribution network mode, and the fingerprint or password has been entered, the machine automatically enters the distribution network mode;

Open the APP, you can add devices through the manual or automatic discovery window. After the device enters the network configuration mode, the APP will automatically pop up the device discovery window. No display if multiple operations. Please press the fingerprint or password key once to wake up the smart lock device and let the device turn on the Bluetooth broadcast.

### 3. Add a device: (please turn on your phone's Bluetooth)



Fingerprint password lock when fingerprint or password is not registered. The device will not turn on the Bluetooth network configuration mode. Before connecting the Tuya APP, you need to press the fingerprint or password first, then the device wakes up and turns on the network configuration mode;

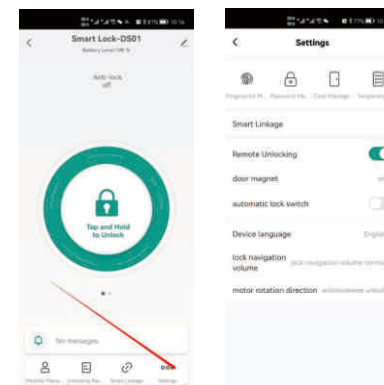
### 4. Add unlock method

The first method: You can directly add fingerprints, passwords and cards in the specific user interface under "Member Management";

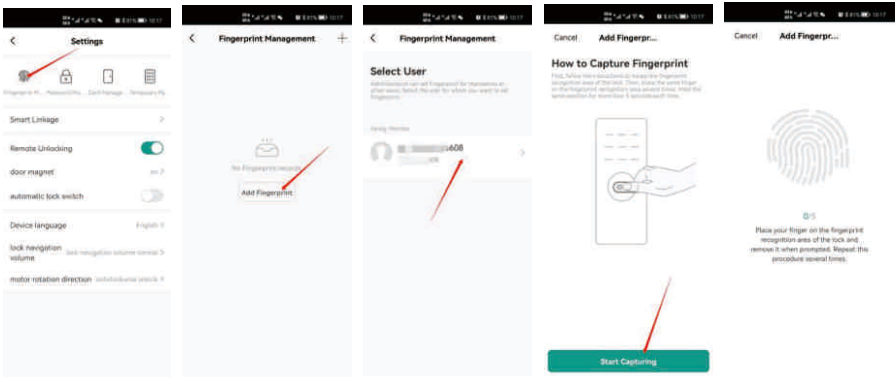
The second method: add in the settings interface;

The difference between these two methods: The first is to add unlocking methods for a user (such as fingerprints, passwords, cards);

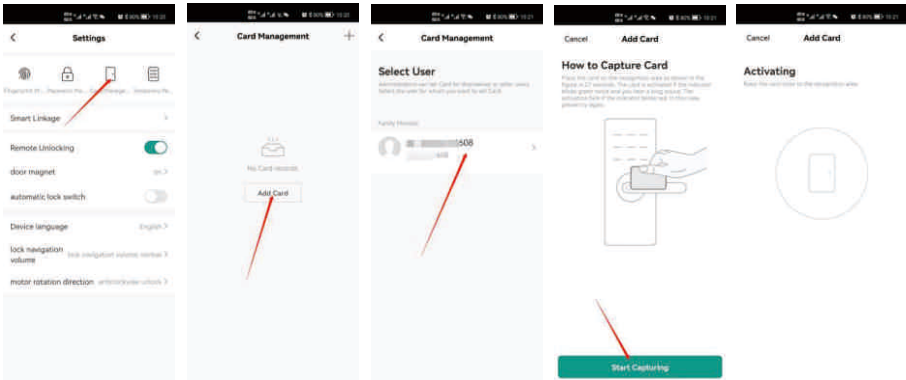
The second is to correspond to a certain user under the specific unlocking method (such as fingerprint, password, card). The method is as follows: ↓



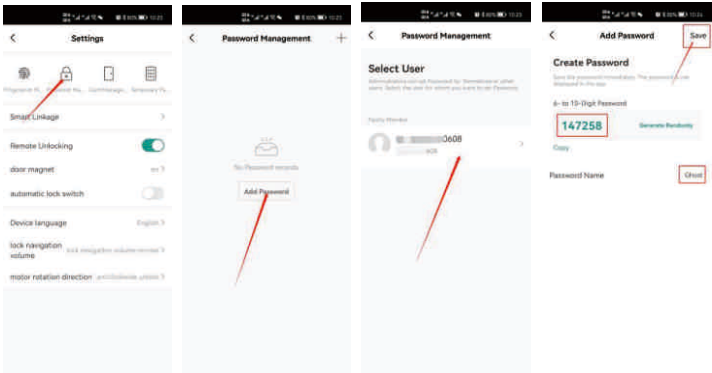
5. Fingerprint management: Add fingerprints, select users, and follow the prompts to enter



6. Card management:

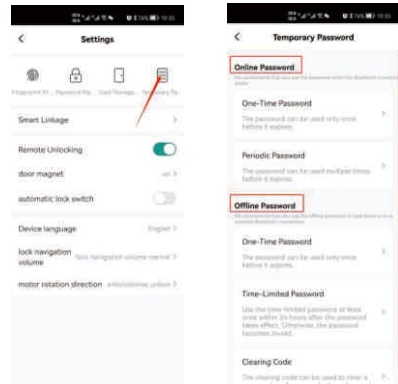


7. Password management:



Add password: The password can be randomly generated, or it can be edited and entered by the user (6-8 digits),

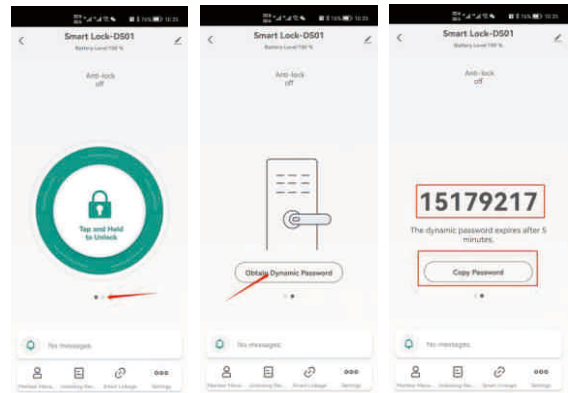
8. Temporary password



Choose an online password or an offline password according to the actual situation;

9. Dynamic password

This feature only supports smart locks with touch codes.  
The dynamic password operation process is as follows:

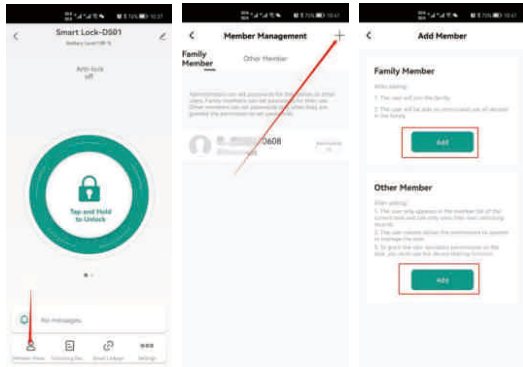


Swipe left on interface 1; enter interface 2; click "Get dynamic password" on interface 2; generate a dynamic password; enter the password to unlock the smart lock.

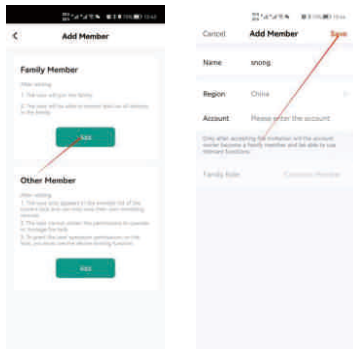


## 10. Member management

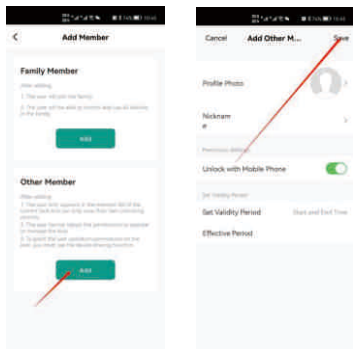
Click "Member Management"



11: The family member added for the first time is the administrator, click "+" in the upper right

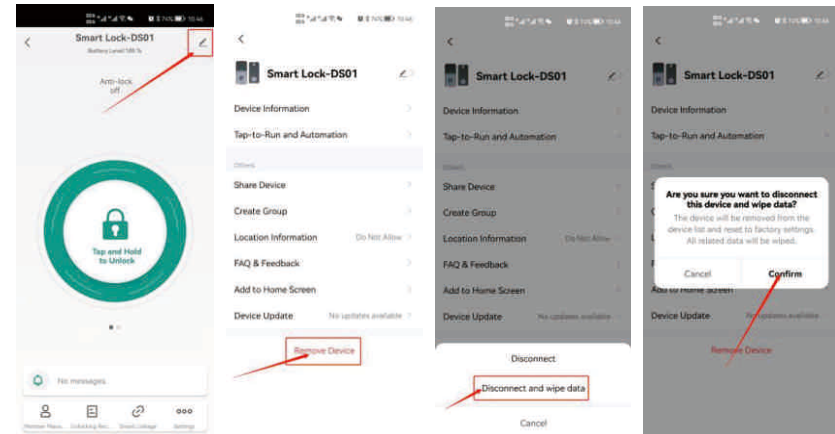


12: Other members: Click the "+" in the upper right



## 13. Factory reset and unbind

Unbinding on the APP side



On the fourth interface, click "Unbind and Clear Data" to unbind, and all data in the device will be cleared.

If the APP is not connected to the smart lock, it can also be remotely operated to unbind. After the device is searched by Tuya APP next time, the device will be restored to factory settings.