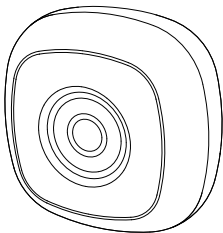


MAGICSHINE



SEEMEE 50MAG

USER MANUAL



WARNING



1. To prevent inadvertent switching on, please keep the light unit in lockout mode before transport or storage.
2. DO NOT disassemble, modify, remanufacture, puncture, or damage the device or batteries.

IN THE BOX



SEEMEE 50MAG



Quick-release adapter



USB-C charging cable



Seat post mount



Saddle mount (incl. strap)

OPTIONAL ACCESSORIES: LUMOS helmet

OPERATING INSTRUCTIONS

ON/OFF: Press and hold the button for 1 second to turn the light on/off.

CHANGE MODE: When the light is on, click the button to cycle through Low→High→Night Flash→Day Flash→Eco Flash→Low...

OUTPUT SELECTION: When the light is on, double click the button to change between red light and white light.

PELOTONSYNC FLASH MODE: When two or more SEEMEE 50MAG taillights come close and flash in the same pattern, they automatically switch to PelotonSync Flash mode. Click the button to exit PelotonSync Flash mode and switch to other modes.

MEMORY FUNCTION: When the light is turned on again, it will automatically turn to the last selected lighting mode.

LOCKOUT: When the light is off, press and hold the button for 3 seconds to enter lockout mode.

UNLOCK: In lockout mode, press and hold the button for 3 seconds or charge the light.

LOW POWER MODE: When the remaining battery power is below 10%, the light will change to Eco Flash mode and cannot be adjusted. Charge the light as soon as possible.

CHARGING / BATTERY INDICATOR

When the light is off, click the button to display the remaining battery level for 3 seconds.

Charging: Flashing red

Fully charged: Constant green

100%-21%: Constant green

20%-11%: Constant red

10%-1%: Flashing red



Standard charging time
approx. 1.5 hours (5V 1A)

OUTPUT / RUNTIME

MODE	BRIGHTNESS	RED LIGHT	WHITE LIGHT
LOW	6LM	9H	13.5H
HIGH	15LM	5H	7.5H
NIGHT FLASH	1~15LM	9.5H	14H
DAY FLASH	0~50LM	12.5H	18.5H
ECO FLASH	3~3~15LM	26.5H	28.5H

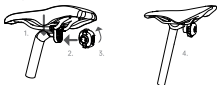
*All data are measured in accordance with ANSI/NEMA FL 1-2009. The test was conducted at a temperature of 25°C and a wind speed of 25 km/h. The runtime may vary depending on external temperature and ventilation conditions, and these deviations may affect the result of testing.

HOW TO INSTALL

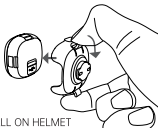
1. INSTALL ON SEAT POST



2. INSTALL UNDER SADDLE



3. REMOVE THE QUICK-RELEASE ADAPTER



4. INSTALL ON HELMET

