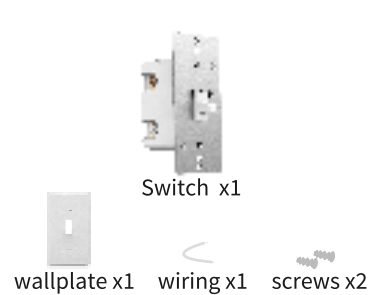


EV LOGIK®

3-Way Wi-Fi Toggle ON/OFF Switch

• WF30TS •

Meet your new smart switch !



Power: 120V AC, 60Hz
Wireless Frequency: 2.4GHz
Wireless Standard: IEEE802.11b/g/n
Maximum Load: 8A
Incandescent 500W
LED 150W
Resistive 1000W
Temperature Range: 32° F-104° F
Range: Up to 100 feet line of sight
For indoor use.

Contents

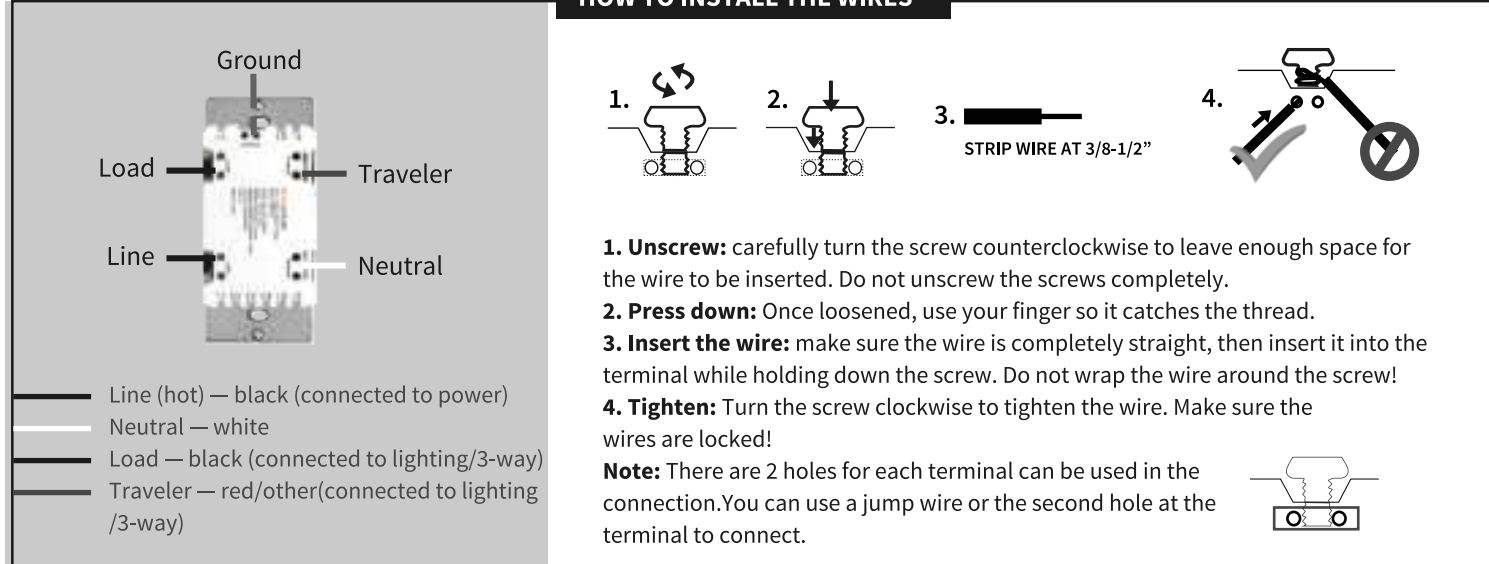
Convention	Description	Convention	Description
Part 1. Installation	• Pre-installation preparation • Installation steps	Part 5. Product Operating Instructions	• Functional operation
Part 2. Wiring Diagram	• Wiring Instructions • single pole and 3-way wiring diagram	Part 6. Network Configuration	• Adding your device to Wi-Fi network
Part 3. Manual Control	• LED Indicator/ Button function • Adding / reset the device (Factory setting)	Part 7. Parameter Settings	• Function description • LED Indicator Status Setting • Restores State after Power Failure • Button Function Setting
Part 4. APP Connection	• Download the app • Add a device in your app • Work with Amazon Echo & Google Home • If you cannot configure it by the default mode successfully, try to connect by AP mode.		

Part 1. Installation

⚡ A Few Quick Reminders

A quick note before we give out the wiring schematics. Please do not try installing this device if you are unsure of how electrical circuits operate within your home. As exciting as it is to have a smart switch installed, it can be dangerous and even life-threatening if you do not install this correctly. Please consult a qualified electrician if necessary. With that said, here are a few other warnings we'd like to point out for your safety:

HOW TO INSTALL THE WIRES



Note before installation

- 1) The Wi-Fi In-wall Smart Switch must not exceed Incandescent **500W** / LED **150W** / Resistive **1000W**.
- 2) Work with **regular 3-way on/off** for 2 locations control. It can only be connected with regular 3-way on/off switch, **don't use a smart switch or a dimmer switch! Couldn't work with an add-on switch!**
- 3) The colors of your wires may not match the ones in our diagrams so please make sure you've **identified all wires correctly** based on their source, not color only.
- 4) Please check your original 3-way wiring circuit in your home before installation, and then **follow the wiring diagram option 1 or 2** in the manual.
- 5) Install the smart switch in the switch box which directly connects to the power **Line and Neutral**.
- 6) This switch **requires a Neutral for installation**, or the installation will not succeed.
- 7) Not recommended for fan.

If you have any questions, please contact us at ask@evalogik.com

1. **Tool:** Please prepare a flat head screwdriver.
2. **Turn power OFF** at circuit breaker or fuse box.

3. **Remove wallplate.**
4. **Remove the switch mounting screws.**
5. **Disconnect the wires and label them after remove the old switch.** (Please use our sticker)

Line Load Neutral Ground Traveler (Just for 3-way switch)

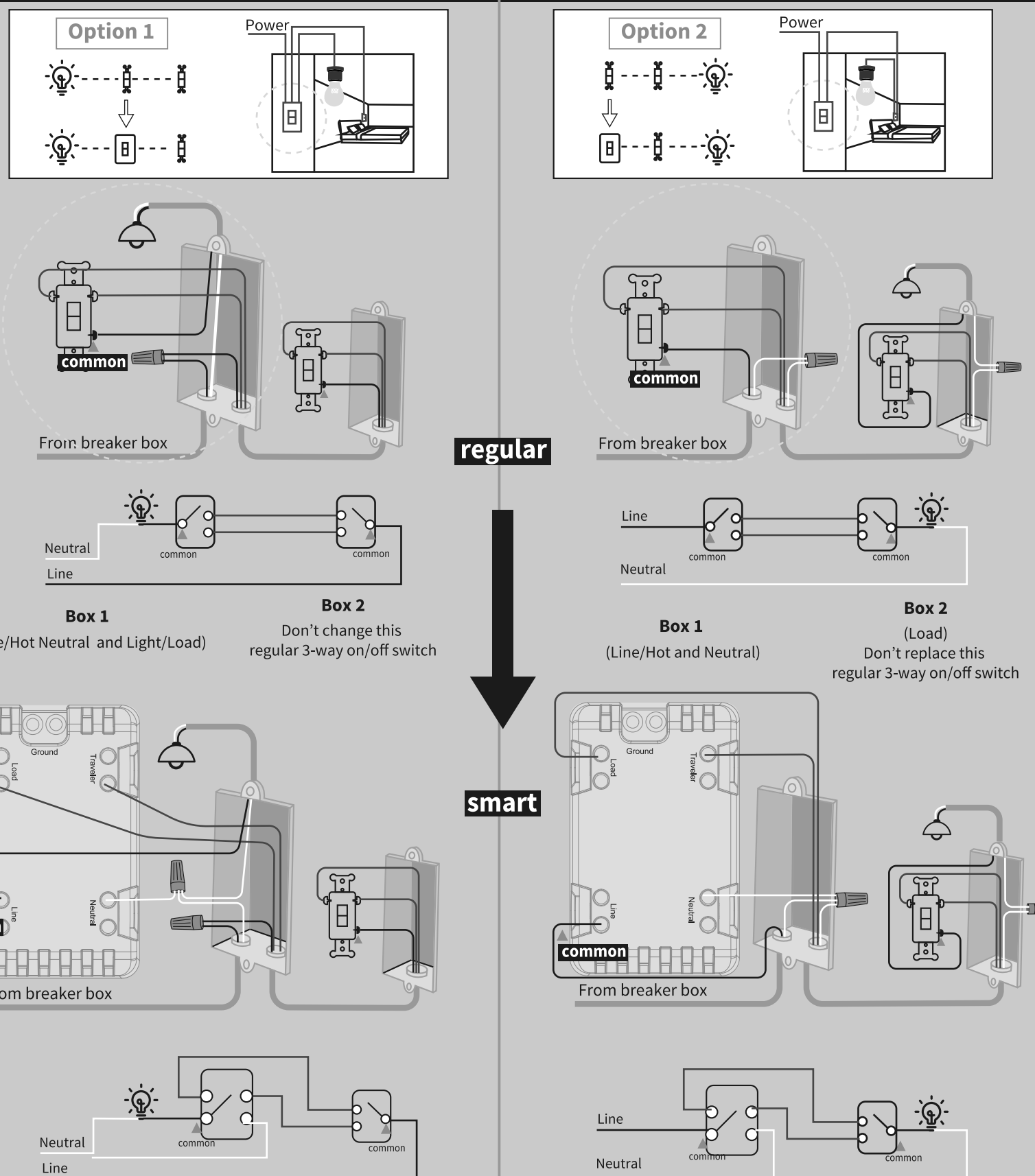
6. **Carefully remove the switch from the switch box.** (DO NOT disconnect the wires.)
7. **There are up to five screw terminals on the smart switch, these are marked** (Please check <HOW TO INSTALL THE WIRES>)

8. **Fix the wallplate with screws after wiring succeed.** (Please use our screws.)
9. **The Ground was excluded from the diagram to simplify the illustration.** Please Make sure the ground wires connected to the switches respectively.

NOTE:

- 1) **Neutral required.** If the switch box do not have a Neutral, please stop! Connect the **white wire to neutral terminal** (use a white jump wire form the package or the second hole at the terminal to connect.)
- 2) Before the old switch detached, please identify the **common terminal**.
- 3) Only work with **regular 3-way on/off** for 2 locations control. It can only be connected with regular 3-way on/off switch, **don't use a smart switch or a dimmer switch! Couldn't work with an add-on switch!**

Please check which option is best for your 3-way installation.



Part 3. Manual Control



LED Indicator:
Red: Network failure
Blue: Network configuration mode
Orange: Light status indicator
Purple: AP Network configuration mode

- 1) Tap 1 (Up toggle): turn on the light
- 2) Tap 1 (Down toggle): turn off the light
- 3) **Adding your device to Wi-Fi network:**
Hold the "down" toggle more than 5s until the bulb flashes and the blue LED indicator blinks rapidly.
- 4) **If you need to reset the device (Factory setting) Network reset**
Hold the "down" toggle until the bulb flashes (the blue LED blinks rapidly)

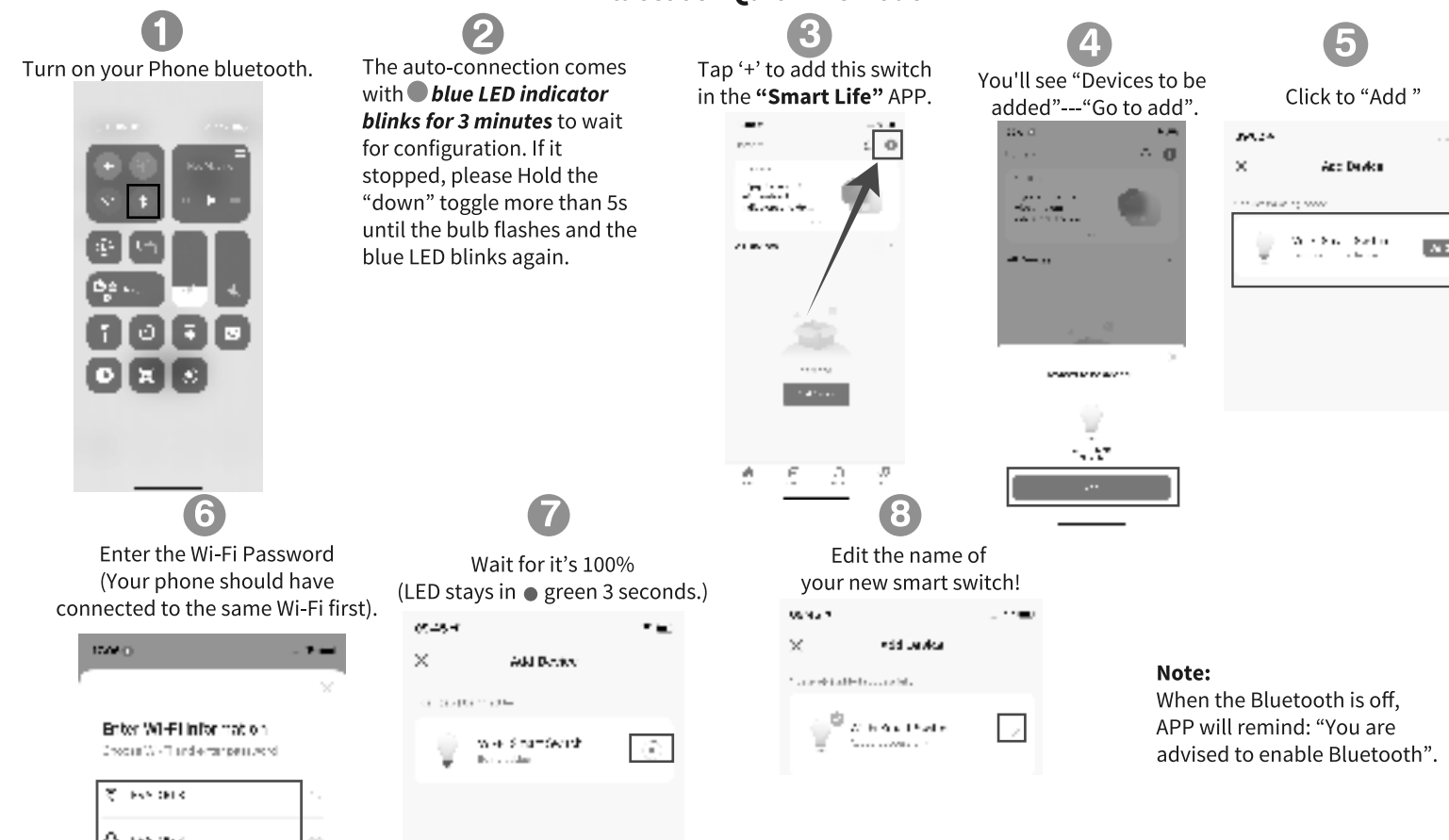
Part 4. APP Connection

1. Please scan the QR code to download the application **"Smart Life"**.
2. If you cannot download Smart Life app, please search **"Smart Life"** on Google Play (for Android phone) or Apple Store (for iOS phone) to download.
After you download the Smart Life App and register a new account, please follow the instructions below to set up your smart switch.
3. The smart switch can be also used with **Amazon Echo** and **Google Home**. Please scan the QR code below and follow the instructions if you have any trouble pairing with them.

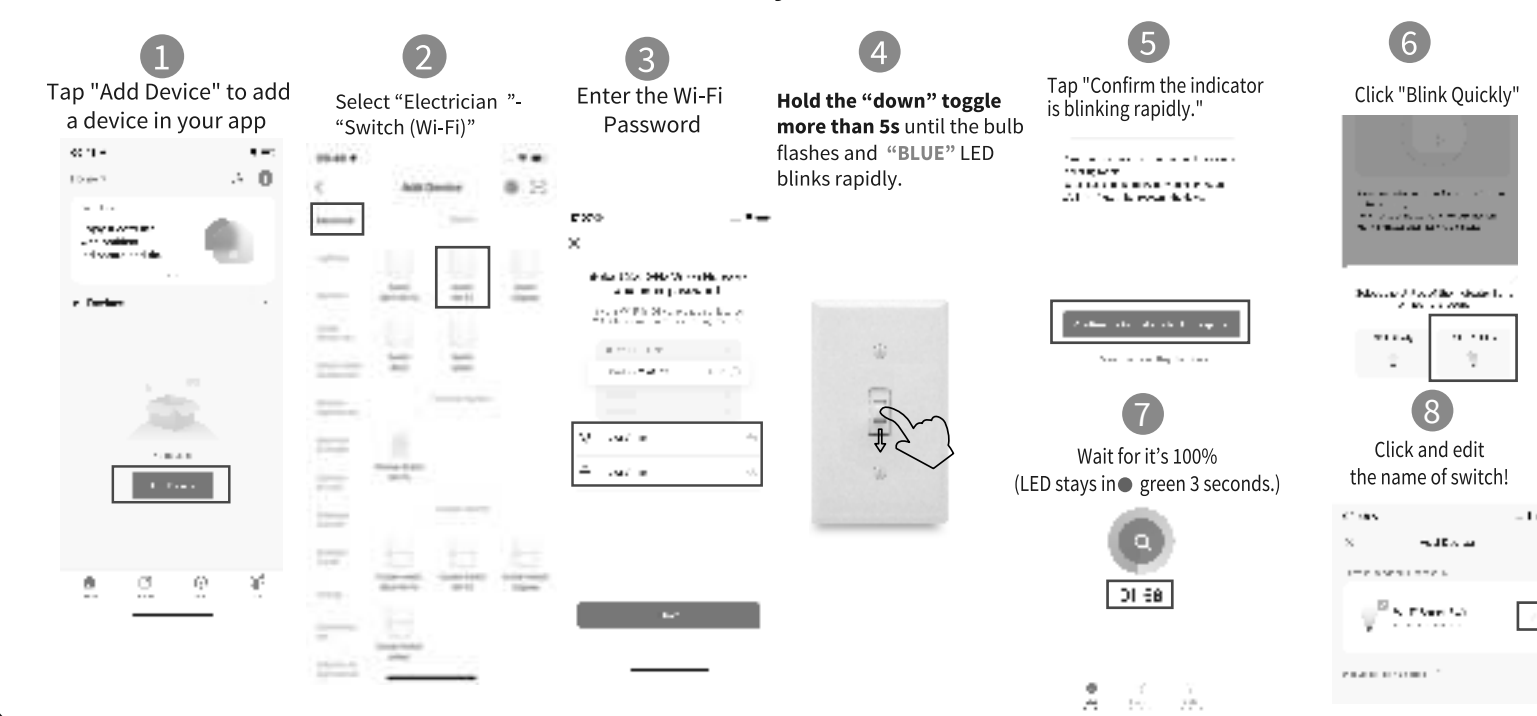


- Note:**
- 1) Our products only support 2.4GHz Wi-Fi network.
 - 2) 3 connection network modes: **Bluetooth quick-fit Mode, Easy Mode, AP Mode.** Choose the most suitable mode to configure the network.
 - 3) Please operate quickly when the blue LED indicator blinks rapidly.
 - 4) When indicator flash enters the network, complete standard operation within 3 minutes.
 - 5) Purple LED Flashing slowly enters AP Mode (select "AP Mode" follow the below instructions).
 - 6) Make sure the switch works properly by manual control before network configuration.
- **Device Reset / Network reset**
hold the "Down" toggle until the light bulb flashes (blue LED blinks rapidly)

Bluetooth Quick-Fit Mode



Easy Mode



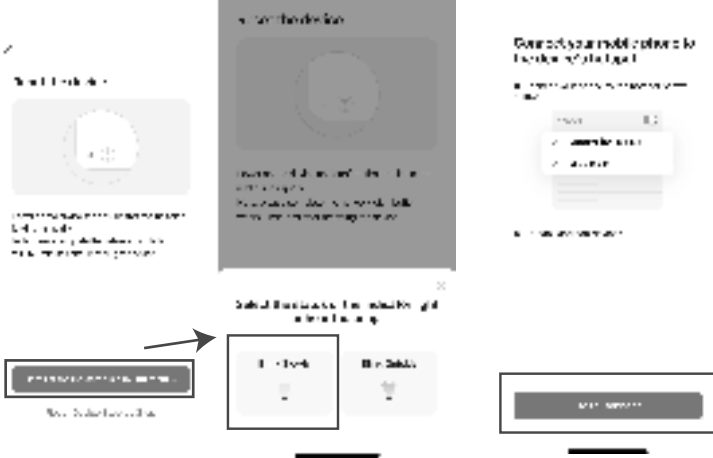
Part 4. APP Connection

AP Mode

- ⚠ If you cannot successfully configure the default mode, try connecting to **AP mode**.

- 1) Select "Electrician "- "Switch (Wi-Fi)" and enter the Wi-Fi password.
- 2) When the blue LED indicator flashes quickly, press and hold the off button (default is the down button) for more than 5s until the bulb flashes twice to enter the AP mode, and the purple LED indicator flashes quickly.
- 3) Click "Confirm the indicator is blinking rapidly." Then select "Blink Slowly".
- 5) Open wireless WLAN settings with "SmartLife-xxxx".
- 6) Back in the application, continue adding devices and wait for the connection to complete.

— **AP Network configuration mode to Easy Mode:** When the purple LED indicator flashes quickly, press and hold the "down" toggle for more than 5s until the bulb flashes 1 time to enter easy mode, and the blue LED indicator flashes quickly.



Part 7. Parameter Settings

The Orange LED indicator flashes 3 times after each parameter setting successfully.)

- **LED Indicator Status Setting** (This parameter can access you to choose the led indicator to be on when the switch (light) is on/off, or LED indicator remains on/off all times.)
Value=1 LED is On when switch (light) On and LED is Off when the switch (light) Off.
Value=2 (default) LED is On when the switch (light) Off and LED is Off when the switch (light) On.
Value=3 LED is always Off.

- **Restores State after Power Failure** (This parameter can access you to set the switch to be on/off after power failure.)
Value=1 The switch is off regardless of the state prior to power failure
Value=2 The switch is on regardless of the state prior to power failure
Value=3 (default) Memory state before power failure This switch will be return to state prior to the power failure after power is restored.

- **Button function Setting** (This parameter can access you to set the "up" toggle to turn the light on/off.)
Value=1 (default) The "up" toggle turn the light on and "down" toggle turn lights off.
Value=2 The "up" toggle turn the light off and "down" toggle turn lights on.

- **Operation:** Quickly press "down" toggle 5 times.
Please note: the switching of each value is in order, a quick press "down" toggle 5 times will switch once. eg: Switching from value 0 to value 3 needs 3 switchings.

- **Operation:** Quickly press "up" toggle 5 times.
Please note: the switching of each value is in order, a quick press "up" toggle 5 times will switch once. eg: Switching from value 0 to value 2 needs 2 switchings.

- **Operation:** Quickly press "down" toggle 8 times.
Please note: the switching of each value is in order, a quick press "down" toggle 8 times will switch once. eg: Switching from value 1 to value 2 needs 1

- **Operation:** Quickly press "up" toggle 8 times.
Please note: the switching of each value is in order, a quick press "up" toggle 8 times will switch once. eg: Switching from value 1 to value 2 needs 1

- **Operation:** Quickly press "down" toggle 8 times.
Please note: the switching of each value is in order, a quick press "down" toggle 8 times will switch once. eg: Switching from value 1 to value 2 needs 1

- **Operation:** Quickly press "up" toggle 8 times.
Please note: the switching of each value is in order, a quick press "up" toggle 8 times will switch once. eg: Switching from value 1 to value 2 needs 1

- **Operation:** Quickly press "down" toggle 8 times.
Please note: the switching of each value is in order, a quick press "down" toggle 8 times will switch once. eg: Switching from value 1 to value 2 needs 1

- **Operation:** Quickly press "up" toggle 8 times.
Please note: the switching of each value is in order, a quick press "up" toggle 8 times will switch once. eg: Switching from value 1 to value 2 needs 1

- **Operation:** Quickly press "down" toggle 8 times.
Please note: the switching of each value is in order, a quick press "down" toggle 8 times will switch once. eg: Switching from value 1 to value 2 needs 1

- **Operation:** Quickly press "up" toggle 8 times.
Please note: the switching of each value is in order, a quick press "up" toggle 8 times will switch once. eg: Switching from value 1 to value 2 needs 1

- **Operation:** Quickly press "down" toggle 8 times.
Please note: the switching of each value is in order, a quick press "down" toggle 8 times will switch once. eg: Switching from value 1 to value 2 needs 1

- **Operation:** Quickly press "up" toggle 8 times.
Please note: the switching of each value is in order, a quick press "up" toggle 8 times will switch once. eg: Switching from value 1 to value 2 needs 1

- **Operation:** Quickly press "down" toggle 8 times.
Please note: the switching of each value is in order, a quick press "down" toggle 8 times will switch once. eg: Switching from value 1 to value 2 needs 1

- **Operation:** Quickly press "up" toggle 8 times.
Please note: the switching of each value is in order, a quick press "up" toggle 8 times will switch once. eg: Switching from value 1 to value 2 needs 1

- **Operation:** Quickly press "down" toggle 8 times.
Please note: the switching of each value is in order, a quick press "down" toggle 8 times will switch once. eg: Switching from value 1 to value 2 needs 1

- **Operation:** Quickly press "up" toggle 8 times.
Please note: the switching of each value is in order, a quick press "up" toggle 8 times will switch once. eg: Switching from value 1 to value 2 needs 1

- **Operation:** Quickly press "down" toggle 8 times.
Please note: the switching of each value is in order, a quick press "down" toggle 8 times will switch once. eg: Switching from value 1 to value 2 needs 1

- **Operation:** Quickly press "up" toggle 8 times.
Please note: the switching of each value is in order, a quick press "up" toggle 8 times will switch once. eg: Switching from value 1 to value 2 needs 1

- **Operation:** Quickly press "down" toggle 8 times.
Please note: the switching of each value is in order, a quick press "down" toggle 8 times will switch once. eg: Switching from value 1 to value 2 needs 1

- **Operation:** Quickly press "up" toggle 8 times.
Please note: the switching of each value is in order, a quick press "up" toggle 8 times will switch once. eg: Switching from value 1 to value 2 needs 1

- **Operation:** Quickly press "down" toggle 8 times.
Please note: the switching of each value is in order, a quick press "down" toggle 8 times will switch once. eg: Switching from value 1 to value 2 needs 1

- **Operation:** Quickly press "up" toggle 8 times.
Please note: the switching of each value is in order, a quick press "up" toggle 8 times will switch once. eg: Switching from value 1 to value 2 needs 1

- **Operation:** Quickly press "down" toggle 8 times.
Please note: the switching of each value is in order, a quick press "down" toggle 8 times will switch once. eg: Switching from value 1 to value 2 needs 1

- **Operation:** Quickly press "up" toggle 8 times.
Please note: the switching of each value is in order, a quick press "up" toggle 8 times will switch once. eg: Switching from value 1 to value 2 needs 1

- **Operation:** Quickly press "down" toggle 8 times.
Please note: the switching of each value is in order, a quick press "down" toggle 8 times will switch once. eg: Switching from value 1 to value 2 needs 1

- **Operation:** Quickly press "up" toggle 8 times.
Please note: the switching of each value is in order, a quick press "up" toggle 8 times will switch once. eg: Switching from value 1 to value 2 needs 1

- **Operation:** Quickly press "down" toggle 8 times.
Please note: the switching of each value is in order, a quick press "down" toggle 8 times will switch once. eg: Switching from value 1 to value 2 needs 1

- **Operation:** Quickly press "up" toggle 8 times.
Please note: the switching of each value is in order, a quick press "up" toggle 8 times will switch once. eg: Switching from value 1 to value 2 needs 1

- **Operation:** Quickly press "down" toggle 8 times.
Please note: the switching of each value is in order, a quick press "down" toggle 8 times will switch once. eg: Switching from value 1 to value 2 needs 1

- **Operation:** Quickly press "up" toggle 8 times.
Please note: the switching of each value is in order, a quick press "up" toggle 8 times will switch once. eg: Switching from value 1 to value 2 needs 1

- **Operation:** Quickly press "down" toggle 8 times.
Please note: the switching of each value is in order, a quick press "down" toggle 8 times will switch once. eg: Switching from value 1 to value 2 needs 1

- **Operation:** Quickly press "up" toggle 8 times.
Please note: the switching of each value is in order, a quick press "up" toggle 8 times will switch once. eg: Switching from value 1 to value 2 needs 1

- **Operation:** Quickly press "down" toggle 8 times.
Please note: the switching of each value is in order, a quick press "down" toggle 8 times will switch once. eg: Switching from value 1 to value 2 needs 1

- **Operation:** Quickly press "up" toggle 8 times.
Please note: the switching of each value is in order, a quick press "up" toggle 8 times will switch once. eg: Switching from value 1 to value 2 needs 1

- **Operation:** Quickly press "down" toggle 8 times.
Please note: the switching of each value is in order, a quick press "down" toggle 8 times will switch once. eg: Switching from value 1 to value 2 needs 1

- **Operation:** Quickly press "up" toggle 8 times.
Please note: the switching of each value is in order, a quick press "up" toggle 8 times will switch once. eg: Switching from value 1 to value 2 needs 1

- **Operation:** Quickly press "down" toggle 8 times.
Please note: the switching of each value is in order, a quick press "down" toggle 8 times will switch once. eg: Switching from value 1 to value 2 needs 1

- **Operation:** Quickly press "up" toggle 8 times.
Please note: the switching of each value is in order, a quick press "up" toggle 8 times will switch once. eg: Switching from value 1 to value 2 needs 1

- **Operation:** Quickly press "down" toggle 8 times.
Please note: the switching of each value is in order, a quick press "down" toggle 8 times will switch once. eg: Switching from value 1 to value 2 needs 1

- **Operation:** Quickly press "up" toggle 8 times.
Please note: the switching of each value is in order, a quick press "up" toggle 8 times will switch once. eg: Switching from value 1 to value 2 needs 1

- **Operation:** Quickly press "down" toggle 8 times.
Please note: the switching of each value is in order, a quick press "down" toggle 8 times will switch once. eg: Switching from value 1 to value 2 needs 1

- **Operation:** Quickly press "up" toggle 8 times.
Please note: the switching of each value is in order, a quick press "up" toggle 8 times will switch once. eg: Switching from value 1 to value 2 needs 1

- **Operation:** Quickly press "down" toggle 8 times.
Please note: the switching of each value is in order, a quick press "down" toggle 8 times will switch once. eg: Switching from value 1 to value 2 needs 1

- **Operation:** Quickly press "up" toggle 8 times.
Please note: the switching of each value is in order, a quick press "up" toggle 8 times will switch once. eg: Switching from value 1 to value 2 needs 1

- **Operation:** Quickly press "down" toggle 8 times.
Please note: the switching of each value is in order, a quick press "down" toggle 8 times will switch once. eg: Switching from value 1 to value 2 needs 1

- **Operation:** Quickly press "up" toggle 8 times.
Please note: the switching of each value is in order, a quick press "up" toggle 8 times will switch once. eg: Switching from value 1 to value 2 needs 1

- **Operation:** Quickly press "down" toggle 8 times.
Please note: the switching of each value is in order, a quick press "down" toggle 8 times will switch once. eg: Switching from value 1 to value 2 needs 1

- **Operation:** Quickly press "up" toggle 8 times.
Please note: the switching of each value is in order, a quick press "up" toggle 8 times will switch once. eg: Switching from value 1 to value 2 needs 1

- **Operation:** Quickly press "down" toggle 8 times.
Please note: the switching of each value is in order, a quick press "down" toggle 8 times will switch once. eg: Switching from value 1 to value 2 needs 1

- **Operation:** Quickly press "up" toggle 8 times.
Please note: the switching of each value is in order, a quick press "up" toggle 8 times will switch once. eg: Switching from value 1 to value 2 needs 1

- **Operation:** Quickly press "down" toggle 8 times.
Please note: the switching of each value is in order, a quick press "down" toggle 8 times will switch once. eg: Switching from value 1 to value 2 needs 1

- **Operation:** Quickly press "up" toggle 8 times.
Please note: the switching of each value is in order, a quick press "up" toggle 8 times will switch once. eg: Switching from value 1 to value 2 needs 1

- **Operation:** Quickly press "down" toggle 8 times.
Please note: the switching of each value is in order, a quick press "down" toggle 8 times will switch once. eg: Switching from value 1 to value 2 needs 1

- **Operation:** Quickly press "up" toggle 8 times.
Please note: the switching of each value is in order, a quick press "up" toggle 8 times will switch once. eg: Switching from value 1 to value 2 needs 1

- **Operation:** Quickly press "down" toggle 8 times.
Please note: the switching of each value is in order, a quick press "down" toggle 8 times will switch once. eg: Switching from value 1 to value 2 needs 1

- **Operation:** Quickly press "up" toggle 8 times.
Please note: the switching of each value is in order, a quick press "up" toggle 8 times will switch once. eg: Switching from value 1 to value 2 needs 1

- **Operation:** Quickly press "down" toggle 8 times.
Please note: the switching of each value is in order, a quick press "down" toggle 8 times will switch once. eg: Switching from value 1 to value 2 needs 1

- **Operation:** Quickly press "up" toggle 8 times.
Please note: the switching of each value is in order, a quick press "up" toggle 8 times will switch once. eg: Switching from value 1 to value 2 needs 1

- **Operation:** Quickly press "down" toggle 8 times.
Please note: the switching of each value is in order, a quick press "down" toggle 8 times will switch once. eg: Switching from value 1 to value 2 needs 1

- **Operation:** Quickly press "up" toggle 8 times.
Please note: the switching of each value is in order, a quick press "up" toggle 8 times will switch once. eg: Switching from value 1 to value 2 needs 1

- **Operation:** Quickly press "down" toggle 8 times.
Please note: the switching of each value is in order, a quick press "down" toggle 8 times will switch once. eg: Switching from value 1 to value 2 needs 1

- **Operation:** Quickly press "up" toggle 8 times.
Please note: the switching of each value is in order, a quick press "up" toggle 8 times will switch once. eg: Switching from value 1 to value 2 needs 1

- **Operation:** Quickly press "down" toggle 8 times.
Please note: the switching of each value is in order, a quick press "down" toggle 8 times will switch once. eg: Switching from value 1 to value 2 needs 1

- **Operation:** Quickly press "up" toggle 8 times.
Please note: the switching of each value is in order, a quick press "up" toggle 8 times will switch once. eg: Switching from value 1 to value 2 needs 1

- **Operation:** Quickly press "down" toggle 8 times.
Please note: the switching of each value is in order, a quick press "down" toggle 8 times will switch once. eg: Switching from value 1 to value 2 needs 1

- **Operation:** Quickly press "up" toggle 8 times.
Please note: the switching of each value is in order, a quick press "up" toggle 8 times will switch once. eg: Switching from value 1 to value 2 needs 1

- **Operation:** Quickly press "down" toggle 8 times.
Please note: the switching of each value is in order, a quick press "down" toggle 8 times will switch once. eg: Switching from value 1 to value 2 needs 1

- **Operation:** Quickly press "up" toggle 8 times.
Please note: the switching of each value is in order, a quick press "up" toggle 8 times will switch once. eg: Switching from value 1 to value 2 needs 1

- **Operation:** Quickly press "down" toggle 8 times.
Please note: the switching of each value is in order, a quick press "down" toggle 8 times will switch once. eg: Switching from value 1 to value 2 needs 1

- **Operation:** Quickly press "up" toggle 8 times.
Please note: the switching of each value is in order, a quick press "up" toggle 8 times will switch once. eg: Switching from value 1 to value 2 needs 1

- **Operation:** Quickly press "down" toggle 8 times.
Please note: the switching of each value is in order, a quick press "down" toggle 8 times will switch once. eg: Switching from value 1 to value 2 needs 1

- **Operation:** Quickly press "up" toggle 8 times.
Please note: the switching of each value is in order, a quick press "up" toggle 8 times will switch once. eg: Switching from value 1 to value 2 needs 1

- **Operation:** Quickly press "down" toggle 8 times.
Please note: the switching of each value is in order, a quick press "down" toggle 8 times will switch once. eg: Switching from value 1 to value 2 needs 1

- **Operation:** Quickly press "up" toggle 8 times.
Please note: the switching of each value is in order, a quick press "up" toggle 8 times will switch once. eg: Switching from value 1 to value 2 needs 1

- **Operation:** Quickly press "down" toggle 8 times.
Please note: the switching of each value is in order, a quick press "down" toggle 8 times will switch once. eg: Switching from value 1 to value 2 needs 1

- **Operation:** Quickly press "up" toggle 8 times.
Please note: the switching of each value is in order, a quick press "up" toggle 8 times will switch once. eg: Switching from value 1 to value 2 needs 1