

# Wifi Smart Socket



## Operating Instructions

### App Installation

- Connect Your Smartphone Or Tablet To The WLAN Router.
- Download The "SMART LIFE" Or "TUYA" App From The App Store/Google Player /Official Website To Your Smartphone Or Tablet. Or Scan The QR Code Via Your Smartphone To Install The App



- Start The Setting Up Process By Opening "SMART LIFE" App
- Enter Your Username And Password To Get The Verification Code To Log Into "SMART LIFE" App To Get Connected With Your Devices.

- Set Up Your Desired Password To Log Into The App Directly



**Our Service:** 2 Years Warranty From The Date Of Purchase The Item

**Tip:** Only 2.4GHz WIFI Standard Is Supported Not Supports 5.0GHz

### Safety Instructions

- Turn Off Power Supply Before Installing
- Use An Electrical Tester To Ensure The Safety
- Check The Terminal Connections Before Wiring

- Take Off The Socket Cover Frame
- Connect The Device In Accordance With The Relevant Diagrams
- Insert The Device With The Mounting Frame Bracket Into The Mounted Box
- Ensure No Bare Wires From Terminals
- Push The Cover Frame To The Device
- Screw The Device Carefully
- Turn On The Main Supply
- For Indoor Dry Location Use Only

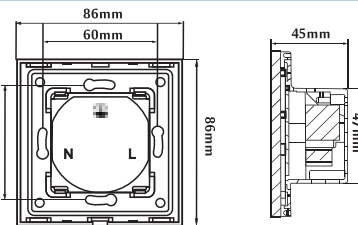
**Caution:** Electrical Devices Should Be Mounted And Connected By A Qualified Electrician

**Warning:** Don't Apply Device Directly To Freshly Plastered It May Tarnish. Over Tighten The Screws May Cause Damage To The Device

Wall Installing Boxes:  
Ø = 76mm, Width 71mm, Depth ≥ 45mm

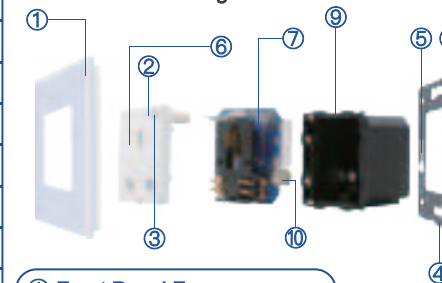
### Specifications

|                  |                    |
|------------------|--------------------|
| Input            | AC 90-240V 50/60HZ |
| RF Frequency     | 433.92MHZ          |
| Life Time        | 100,000 Times      |
| Operating System | IOS / Android      |
| WIFI Frequency   | IEEE 802.11 b/g/n  |
| WIFI Standard    | 2.4G 802.11 b/g/n  |
| Operating Temp   | -20°C to 70°C      |
| Ambient Humidity | ≤95%               |
| WIFI Consumption | ≤0.2W              |



### Know Your Device

Ensure That You Have All Of The Required Parts When Installing:



1. Front Panel Frame
2. Indicator Light
3. Operating Button
4. Short Slot
5. Screw Fitting
6. Socket Front Cover
7. PCBA Module Board
8. Mounting Metal Frame
9. Fire Retarding PC Base
10. Wiring Terminals

### Technical Features

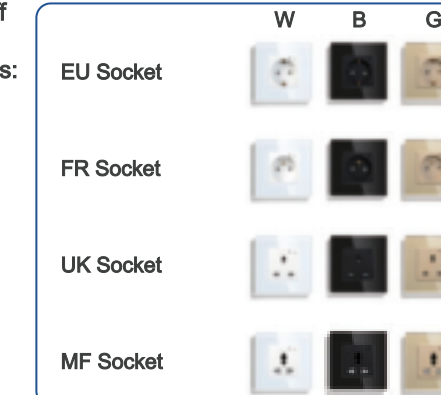
- The WIFI Smart Device Designed To Control, Schedule And Monitor Your Home Electrical Appliances Via Your Smartphone Or Manually Power On / Off
- The WIFI Smart Device Enables You To Perfectly Perform The Following Features:
  1. APP Control
  2. Timing & Schedule Function
  3. Sharing Control
  4. Sync Status
  5. Voice Control
  6. Integrate With IFTTT
  7. No Hub Required

All Earth Wires Should Be Sleeved And Connected To The Socket Earth Terminal

**Tip:** The Factory Default Status Initialization Is ON. You Can Change The Initialization Status In "Setting" Button

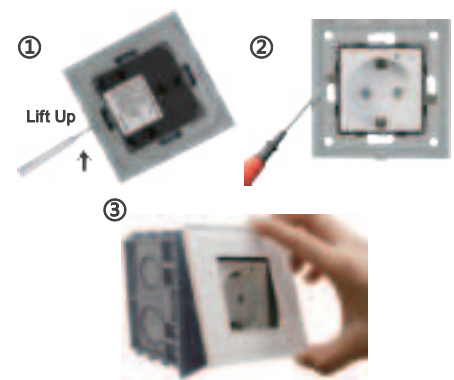
### Device Appearance

The WIFI Socket Has A Small LED Indicator Light On The Front Which Enable You To Discover Whether The Device Is On Or Off



**Tip:** To keep The Finish Of The Device, Wipe With A Soft Dry Cloth Periodically

### Fixed Installation Methods



- ① Place A Screwdriver Into The Short Slot And Gently Lift Up Until Release
- ② Screw To Fix The Socket To The Wall Mounted Box
- ③ Push The Front Frame Into The Installed Device Carefully

## Wiring Connection

### A. Wifi Single Pole

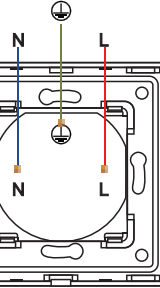
The Diagrams Are Simplified For Clarity  
Connect The Devices According Below:

**Tip:** Do Not Switch On The Appliance  
Before Completely Assembling It To The  
Wall Mounted Box

All Earth Wires Should Be Sleeved And  
Connected To The Earth Terminal

Example Of  
Wiring Diagram  
Connection Of  
Wifi Single Pole

DIMEN (H x W x D)

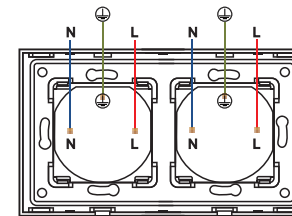


86 x 86 x 45 mm

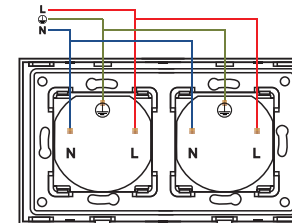
### B. Wifi Double Pole (146)

Do Not Connect The Appliances Which Are  
Not Compliant With The Specifications And  
Safety Standards

Example Of  
Wiring Diagram  
Connection ①



Example Of  
Wiring Diagram  
Connection ②



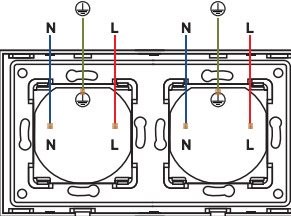
DIMEN (H x W x D)

146 x 86 x 45 mm

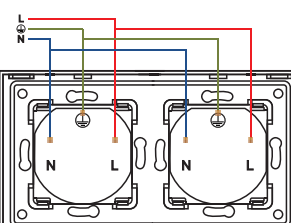
### C. Wifi Double Pole (157)

Install The Socket Into Mounted Wall Box  
And Connect Each Wire To The Accurate  
Terminals

Example Of  
Wiring Diagram  
Connection ①



Example Of  
Wiring Diagram  
Connection ②



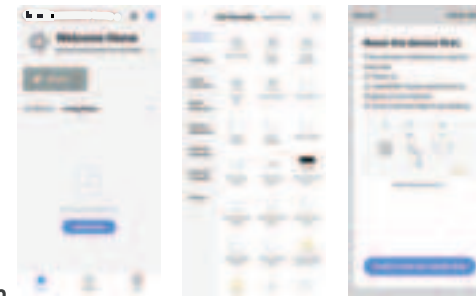
DIMEN (H x W x D)

157 x 86 x 45 mm

## Device Basic Operation

Read The Device's Operating Instructions  
Before Starting Any Electrical Work To Avoid  
Any Damage May Caused Via Improper Use

- Connect The Device To The Power
- Connect Your Smartphone To The WIFI
- Hold On The Front Button For Seconds
- The LED Indicator Will Glow Rapidly
- Release The Button When Glows
- Start To Add Your Devices



- Input Your Password To Start Adding
- Wait For The Adding Process To End
- Successful Pairing Will Be Confirmed



### Home Centre Icons:

Icon “ ” Refers To Device Options  
Icon “ + ” Refers To Device Adding Process  
Icon “ ” Refers To Device Rename Option

**Note:** After Pairing, Front LED  
Indicator Change To Blue When 'ON'  
And Red While 'OFF'

## RF Default Operation

Click On A To Turn On/Off Socket 'A'  
Click On B To Turn On/Off Socket 'B'  
Click On C To Turn On/Off Socket 'C'  
Click On D To Turn All Off

### RF Pairing Mode:

Hold On The Front Button Of The Device  
For Seconds Till The Blue LED Indicator  
Light Starts Blinking. Press Any Button Of  
The Remote Control To Successfully Pairing

### RF Canceling Sync Mode:

Hold On The Device's Front Button For  
Seconds Till The Blue LED Indicator Starts  
Blinking. Release And Hold Again On The  
Front Button Till The LED Light 'On' Cancel-  
ing Mode Will Be Successfully Confirmed

**Tip:** Long Press On The Button To  
Reset To The Factory Defaults, While  
Resetting LED Change To Red Colour

## Related Device Features

- **APP Control:**  
Allows You To Control All Of Your Devices  
Via Your Smartphone Wherever You Are
- **Timing & Schedule Function:**
  - ① Enables Your To Set Up The Accurate  
Time Of Your Devices Automatically  
On/Off Whether You're Home Or Not
  - ② Save Energy And Money On Your Bills  
It's Secure And Power Saving!
  - ③ Enables You To Turn The Device  
On/Off When Sunset Or Sunrise Starts
  - ④ Allows You To Turn The Device On/Off  
Under Climate Conditions
- **Sharing Control:**  
Enables You To Share Your Devices With  
Your Family And Friends.
- **Sync Status:**  
Enables You To Track Status To Change  
All Of Your Devices Via Your Smartphone

- **Voice Control:**  
Compatible With Google Assistant And  
Amazon Echo  
Turn Your Home Devices On/Off With  
Just The Power Of Your Voice

- **Integrate With IFTTT:**  
Compatible With IFTTT App Which Has  
The Possibility To Control Your Device Via  
Your Smartphone And Voice Control

- **No Hub Required:**  
You Can Entirely Connect Your Devices  
Over Wifi Without Needing Any Additional  
Accessories

**Note:** During The Adding Process,  
The Smartphone Should Be In A  
Direct Range Of The Device

**Tip:** To Avoid Any Damage May Leads  
To The Panel And Border, Carefully Lift  
Up The Screwdriver While Removing

## Limited Warranty

The Limited Warranty Does Not Cover Any  
Failures And Operating Difficulties Due To Abuse,  
Misuse, Alteration, Misapplication, Improper  
Installation, And Maintenance Or Service By You  
Or Any Third Party

The Limited Warranty Does Not Cover Damages  
To The Finish, Such As Scratches, Dents,  
Discoloration Or Rust After Purchase

In Case Of Problems While Adding The  
Device. Reset The Appliance And Repeat  
The Adding Process

Our Mission Is To Provide You The Best Smart Devices Ever