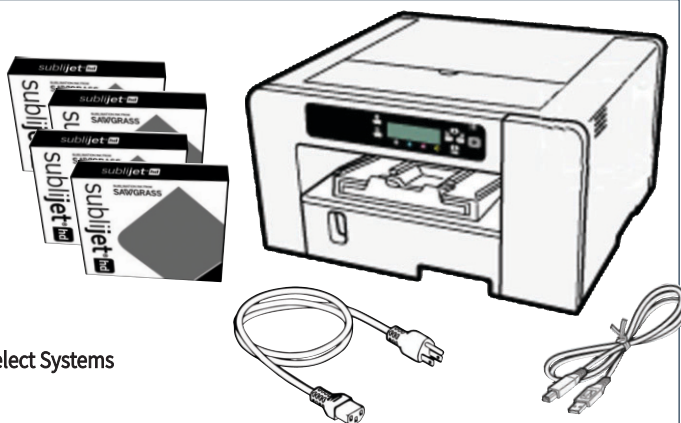


## This Package Includes:

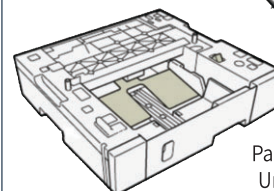
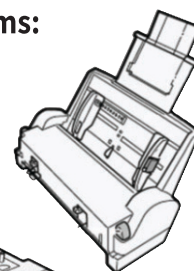
Virtuoso Ink Jet Printer  
w/Power Cable  
SubliJet- UHD Ink Cartridges  
Ink Minder Plate  
Lifetime Support for your  
printer (Exclusive from Condé)



Note: Printer USB Cable Provided w/Select Systems

## Optional Items:

Multi-Bypass  
Paper Tray



Paper Feed  
Unit

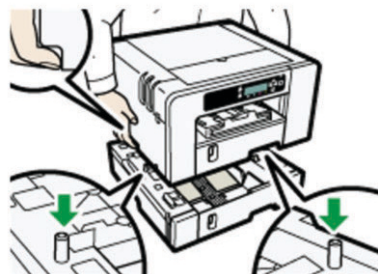
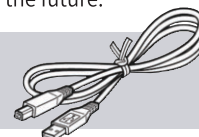


## 1. UNPACK YOUR PRINTER

Unpack the printer from the box and remove all packing material and tape from the printer. Save the packing materials in case the printer needs to be shipped in the future.

### DID YOUR PURCHASE INCLUDE A PRINTER USB CABLE?

Be sure that you have a printer USB cable before proceeding.



## 2. ATTACH OPTIONAL ACCESSORIES

**Do NOT turn the printer on!**  
**Do NOT tilt the printer, keep it level at all times!**  
**Be careful not to trap your fingers between the printer and the feed unit!**

### A. Paper Feed Unit (SG500 Part# PRNT98V4002 -or- SG1000 Part# PRNT98V8002).

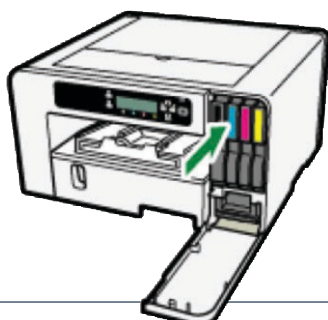
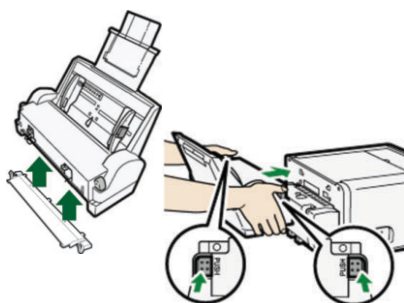
**The paper feed unit is sold separately. Skip this step if you did not purchase it.**

1. Unpack the tray from its box, remove all tape and packing material.
2. Position the paper feed unit next to the printer.
3. Lift the printer above the paper feed unit using both hands.
4. Align the connecting parts of the printer and the paper feed unit and lower the printer down on top of the paper feed unit.
5. When you hear the click, proceed to the next step.

### B. Multi Bypass Paper Tray (SG500 Part# PRNT98V4001 -or- SG1000 Part# PRNT98V8001).

**The multi bypass tray is sold separately. Skip this step if you did not purchase it.**

1. Do not place the machine near the edge of a desk if the multi bypass tray is attached. There is a risk of it falling to the floor.
2. Do not forcefully press down on the multi bypass tray. If it comes off the machine, positioning problems may result.
3. Take the multi bypass tray out of the box and remove the tape.
4. Connect the provided rail to the bottom of the bypass tray and ensure it is snapped into place.
5. Attach the multi bypass tray while pressing the tabs on each side, and then push it in until you hear it click.

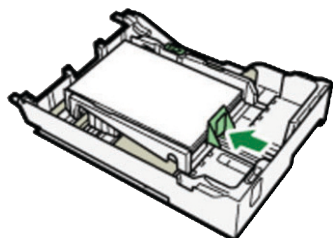


## 3. INSTALL THE SUBLIMATION INK CARTRIDGES

**Do NOT turn the printer on!**  
**Do NOT connect the printer to your computer!**  
**Do NOT shake or agitate the ink cartridges before installation!**

### SubliJet-HD Sublimation Ink Cartridges

1. Remove the packaging from the ink cartridges.
2. Open the right front cover.
3. From left to right, gently insert each cartridge into its appropriate slot.
4. Close the cover.



## 4. LOAD THE PAPER

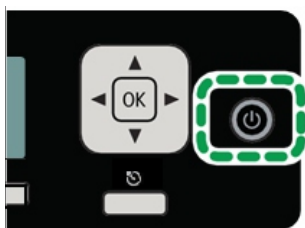
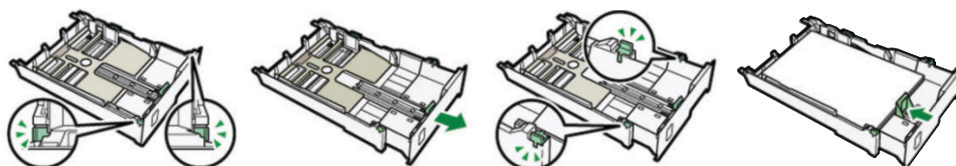
**Do NOT turn the printer on!**

**Do NOT connect the printer to your computer!**

1. Pull out the paper feed tray.
2. The paper tray(s) will need to be adjusted to fit the size of the paper. Using the movable tabs in each feed tray, pinch the catch of the paper guide on the right side and slide the guides to match the paper width. Push the end guide out until the paper will fit snugly.
3. Load the paper print side (whitest side) down.  
Note: As a cost saver, you may use standard bond paper for nozzle checks. However, sublimation media must be used for printing transfers.
4. Squeeze end paper guide and move it to paper edge.
5. With output ramp closed, gently reinsert the paper tray into the printer until it stops.
6. Pull out the output ramp extension.

### EXTENDING THE PAPER FEED TRAY TO ACCEPT PAPER LARGER THAN 8.5x11

1. Slide the tabs on both sides of the paper feed tray's interior to the unlocked position.
2. Pull out the paper feed tray's extension.
3. Slide the tabs back into place to lock the paper tray extension into position.
4. Squeeze end paper guide and move it to paper edge.



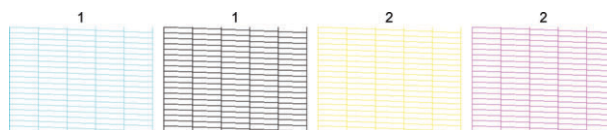
## 5. POWERING UP THE PRINTER

**Do NOT turn the printer off during the ink feed process!**

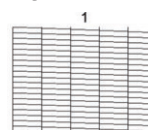
**Do NOT connect the printer to your computer!**

1. Insert the power cord into the slot on the left side of your printer and then plug it directly into a wall outlet.  
Note: Make sure the power cord is not running underneath the printer.
2. Press the Power button. The printer will begin feeding ink into the printheads. This will take 7-9 minutes.
3. Wait for the [READY] message to appear on the control panel.
4. Press the [Menu] key and arrow down to "Print Features"
5. Press the [OK] key and then arrow down to "List/Test Print"
6. Press the [OK] key and then arrow down to "Nozzle Check"

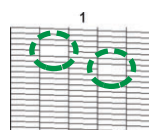
### Test print:



### A good pattern:



### A bad pattern:



- If pattern is incomplete, press [Menu] until you see [Maintenance], then press [Enter] and choose [Head Cleaning]. Run the head cleaner, then repeat the Nozzle check until there are no gaps in the Test Print.
7. If pattern is perfect, press the [Escape] key.



## 6. CONNECTING TO YOUR COMPUTER

**Call Condé Tech Support @ 800-826-6332, select option #2. Technical Support is available 7 days a week until 9PM CST. After regular business hours, leave a message and a Tech Support Technician will call you back.**

1. The tech will need to know which graphics software(s) you will be using.
2. The tech will remote in to install and configure your printer and software for sublimation.

Online resources can be found at: [www.conde.com/newsawgrassprinters](http://www.conde.com/newsawgrassprinters)