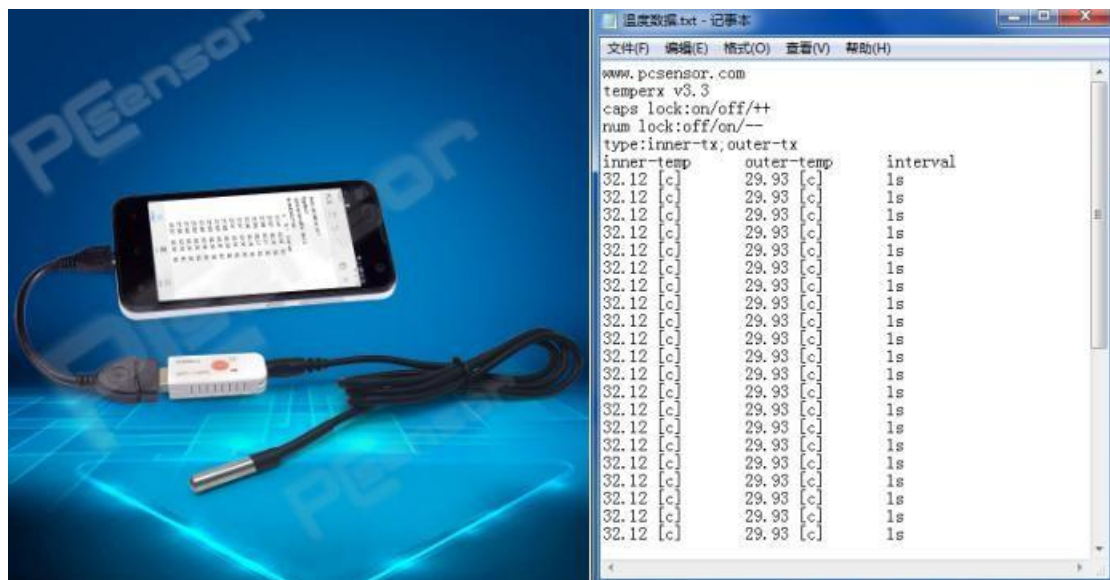


How to use

1. Without our software

Insert the device into the USB interface of the computer or use the adapter cable to connect to the USB enabled device such as the mobile phone, open a document or excel table that needs to record temperature data, press the “TXT” button on the device or long press the “Caps Lock” key or “Num lock” key on the keyboard for 3 seconds to start the automatic printing function, and press the “Caps Lock” key twice to increase the printing interval by one second, Press “Num Lock” twice to shorten the print interval by one second.



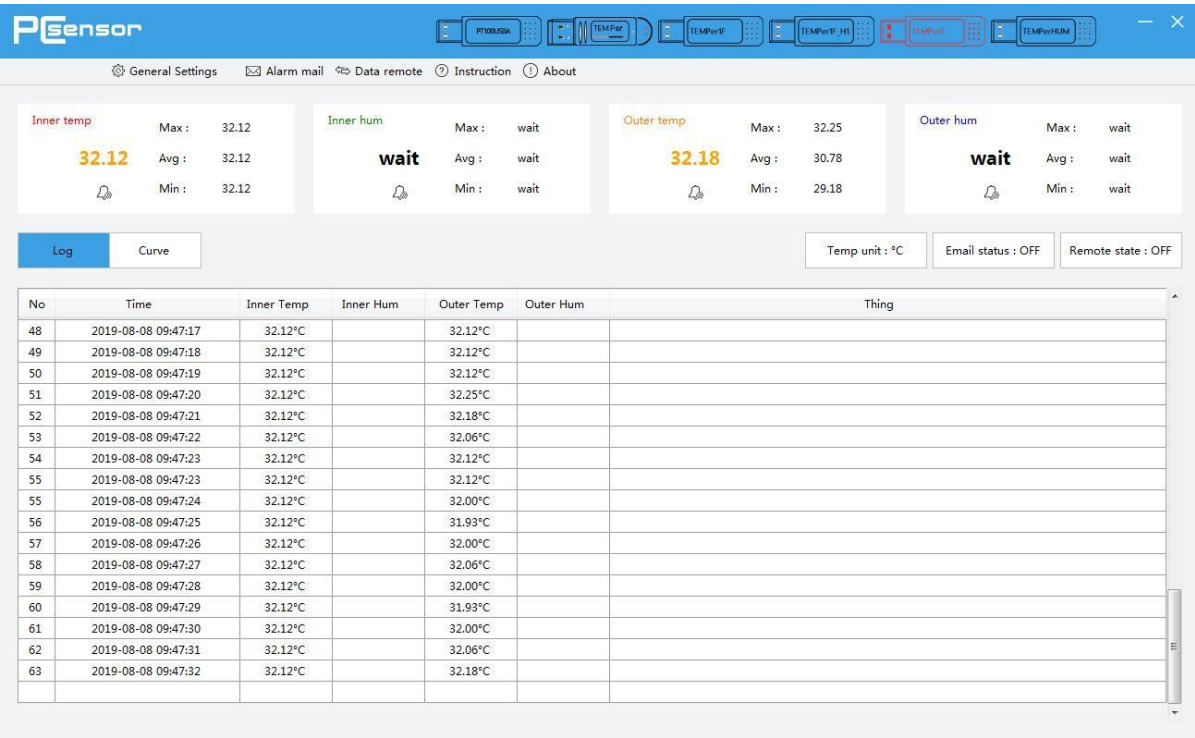
2. With our software

Download our latest software in

<http://store.pcsensor.com/software1> After the software is installed,

plug the device into the computer and double-click to open the

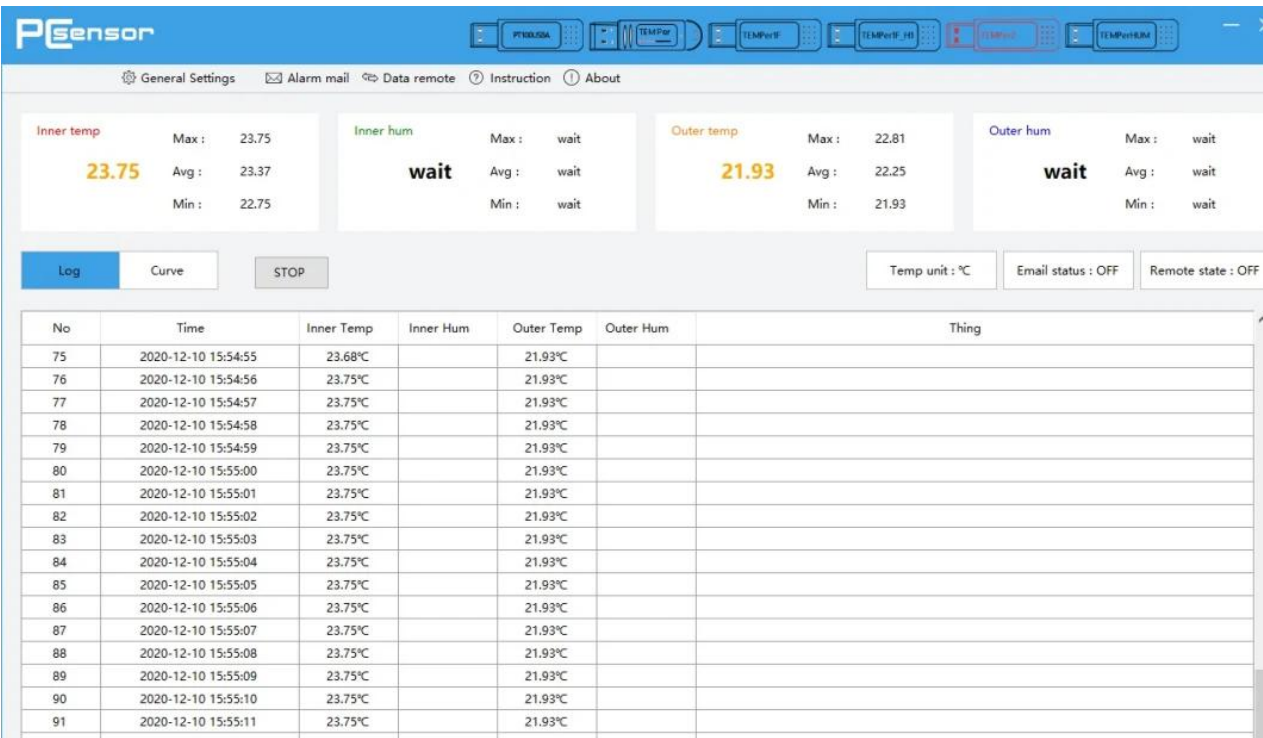
software. The software automatically identifies the device and starts reading the temperature



Functions

LOG

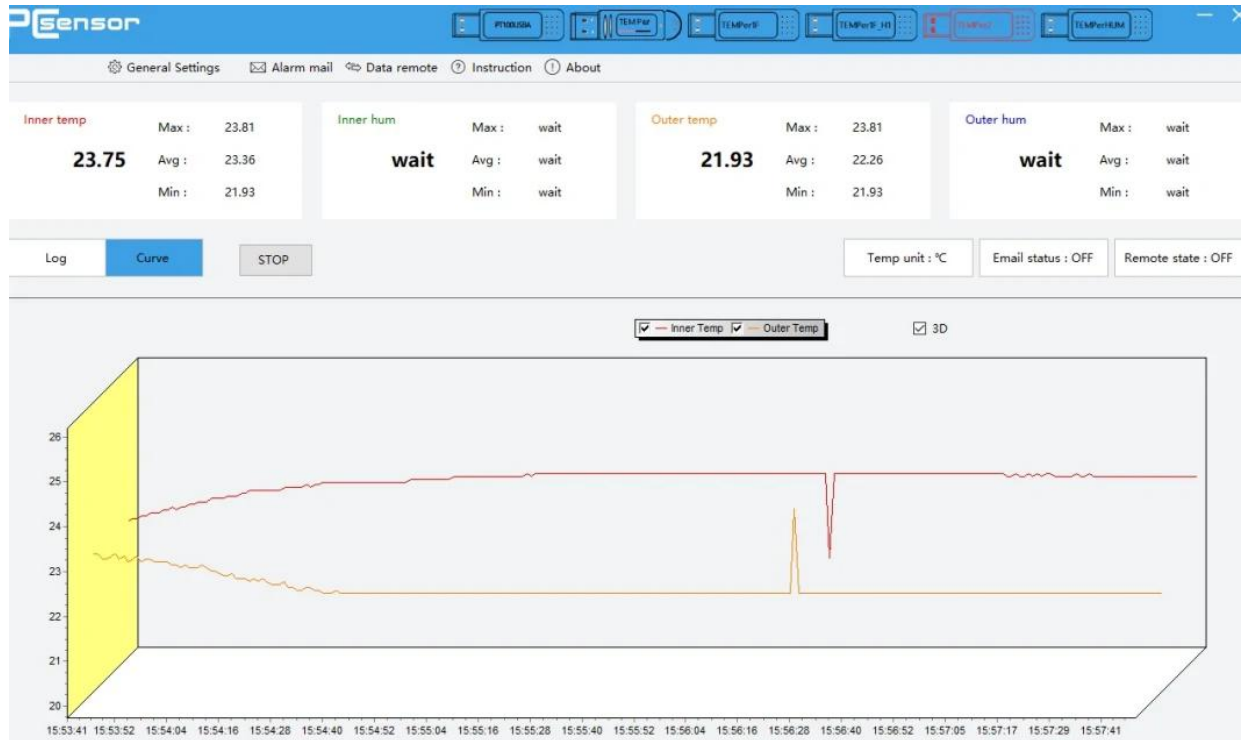
Record the Real-time Temperature Data and Save Them in the Related File Automatically.



CURVES DISPLAY

The Curves can Real-time Display the Changing Situation of Temperature. The Tendency of Curves Responds the Real-time Temperature Situation.

ADVISE: Please Check the Log or Data File in Save Contents When You Want to Check the Historical Data.



EMAIL FUNCTION

Fill in the Related Information of Email and Save it. The Requirement of Send Email: Support POP3/SMTP and Other Server Port. Receive Email you can fill in two.

Related Function: 1) when the Alarm is on, it will send the Email to Specified Email Box Automatically if the Temperature Reach the Alarm Limit. 2) You can set the Sending Interval, and then it will send the Email to the Specified Mail Box at Set Intervals. (Advise) 3) it can Send Email Continuously to the Specified Mail Box. (Deprecated feature)

Alarm mail Data remote ? Instruction ! About

Inner hum Outer temp Outer hum

Alarm mail

Send email

Account : Password : SMTP : Port : ☐ Secure Connection (SSL)

Receive email

Name1 : Account1 : Name2 : Account2 :

Send content

Theme : Content :

Send mode

☒ Alarm ☐ Continuous 1 (unit: minute)

Email status

☐ ON ☒ OFF

Save

Help

Help

1. outlook
2. gmail

outlook mail setting: must open the state of pop3/smtp in your account

Account: Email Account [Login the outlook mail](#)
Password: Email Password
SMTP: smtp-mail.outlook.com
Port: 587
SSL: YES

Tip: you need to verify your new account if first register, just click the link in the email which send by Microsoft

Options

General
Mail
Automatic processing
Automatic replies
Inbox and sweep rules
Mark as read
Message options
Read receipts

Save Discard

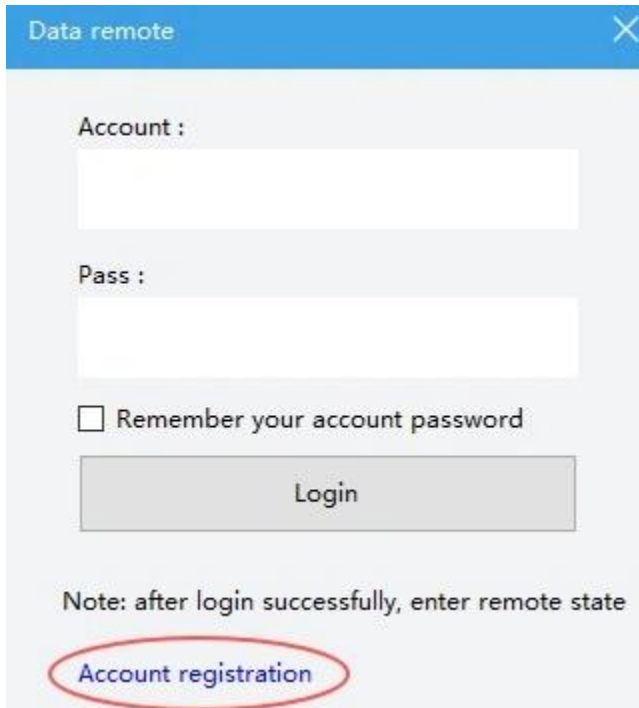
POP and IMAP

POP options
Let devices and apps use POP

☒ Yes ☐ No

Data Remote

you can view the data remote in other computer after you log in the registering account.

A screenshot of a web application window titled "Data remote" with a close button (X) in the top right corner. The window has a light gray background. It contains two input fields: "Account :" and "Pass :". Below the "Pass :" field is a checkbox labeled "Remember your account password". A "Login" button is positioned below the checkbox. At the bottom of the window, there is a note: "Note: after login successfully, enter remote state". Below the note is a link labeled "Account registration" which is circled in red.

Data remote

Account :

Pass :

☐ Remember your account password

Login

Note: after login successfully, enter remote state

[Account registration](#)

General Setting

- a) Read interval-Language-Temp unit -Software shutdown mode
- b)Calibration
- c)Alert setting
- d)File saving
- e)Voice Alert

Contact us

If you have any questions or need support, do not hesitate to contact us

Email: sales@pcsensor.com / 3123394646@qq.com

Skype: pcsensor-rding