



# Installation Guide

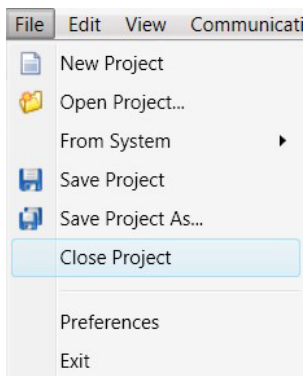
## EmpirBus Studio

## Introduction

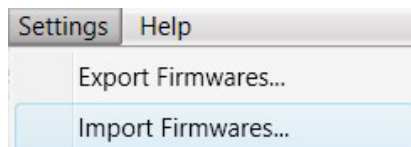
This guide describes step-by-step how to install EmpirBus® Studio and upload the configuration file into the EmpirBus® system.

## Installation of EmpirBus® Studio and firmware

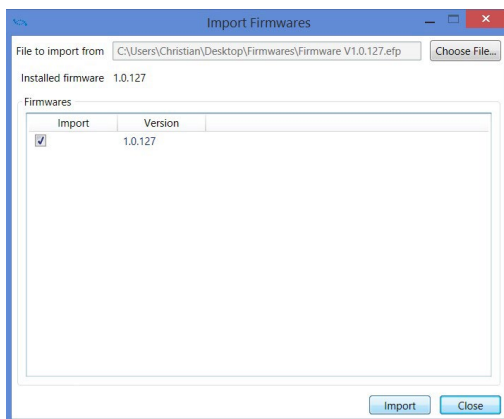
1. Install EmpirBus Studio and start the program.
2. Install the latest firmware.



2.1 Got to File/Close project.



2.2 Go to Settings/import firmwares.



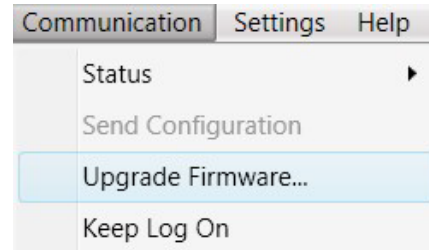
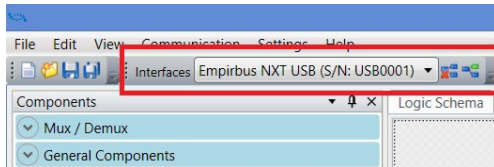
2.3 Choose the downloaded firmware and import.



2.4 Confirmation of firmware import.

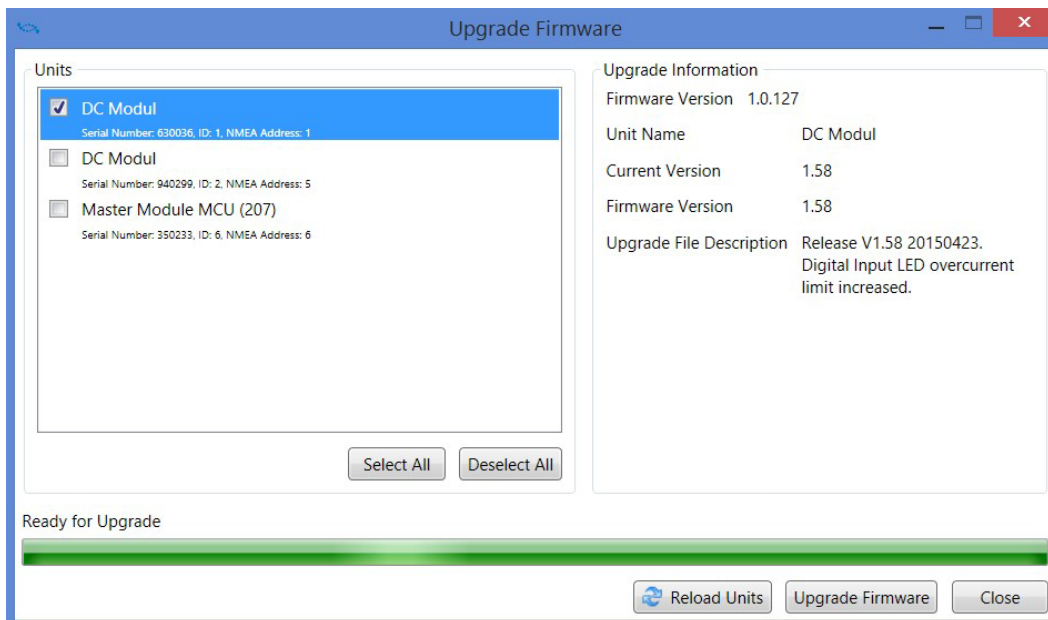
## Upgrade firmware and set ID's on the system units

3. Make sure that the system is powered on and connect the Master interface (or programming interface from EmpirBus or KvaserLeaf Light) to the PC with the attached USB cable.



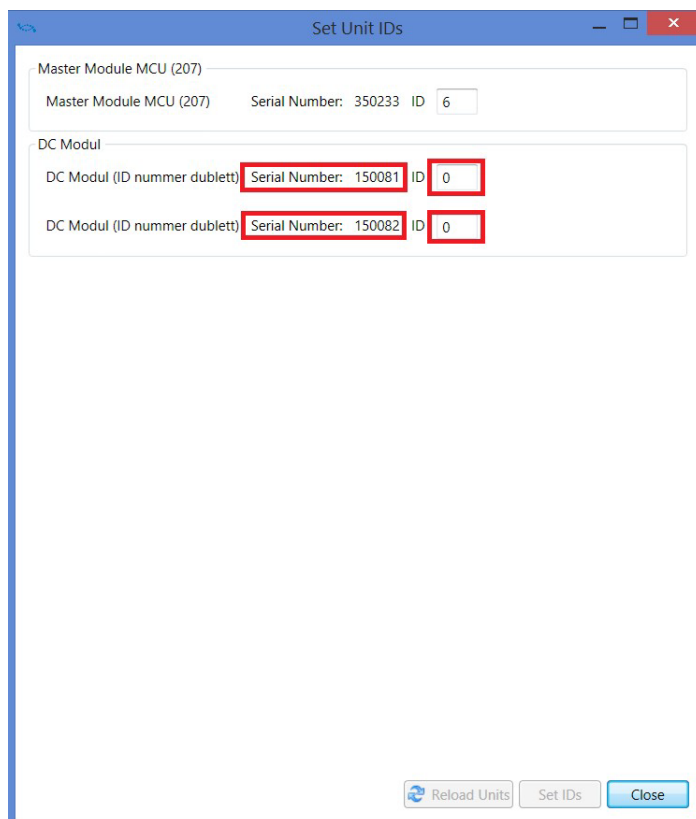
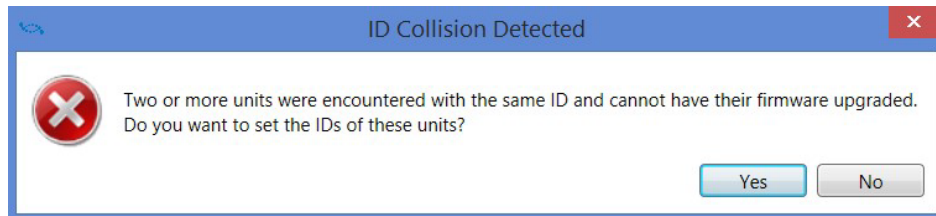
- 3.1 Check that your connected interface is found and recognized.

- 3.3 Go to communication and Upgrade Firmware.



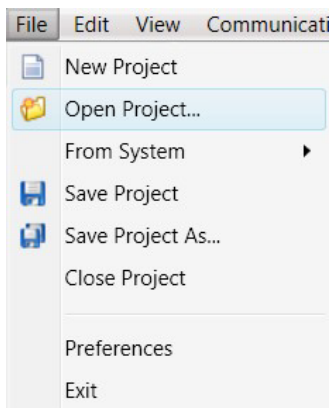
- 3.4 The program will notify if an upgrade is necessary by having filled in the checkboxes automatically. Choose Upgrade firmware if needed.

3.5 If the system is a new installation containing more than one module you will be prompted to set their ID numbers. Visually check and note down the serial numbers on your modules so you can match them against the units in the I/O list. If it's an upgrade of new configuration or replacement of a unit you can ignore *step 3.6*.

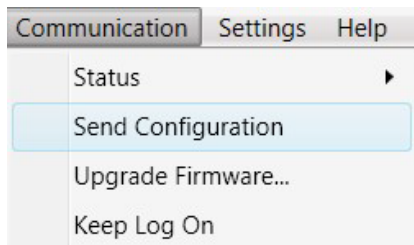


3.6 Input the ID number that correspond with the module in the I/O list and the Set ID's. **Note:** You can always change the ID's in the project explorer/properties.

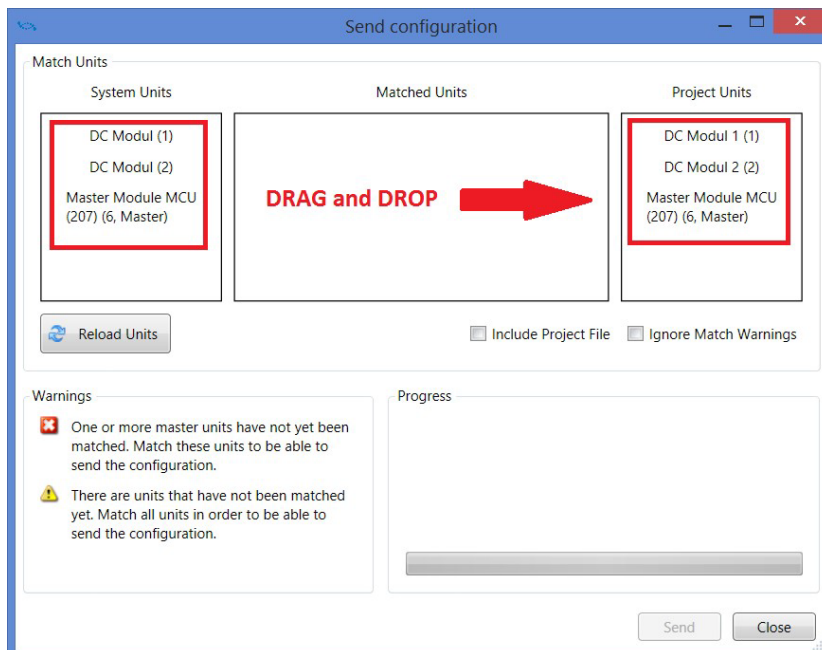
3.7 Go to File/Open Project and open the configuration.



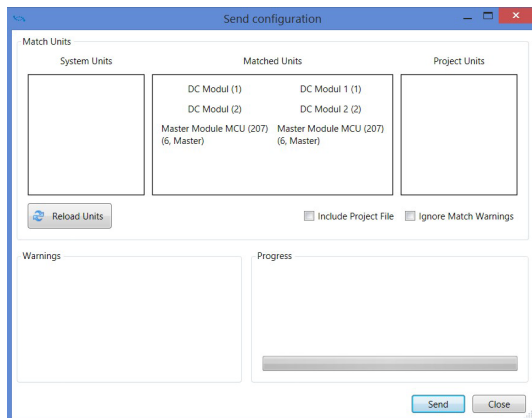
3.8 Go to Communication/Send-Configuration.



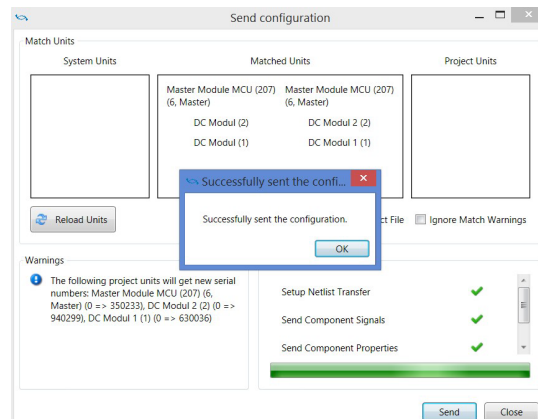
3.9 Match the system units with the project units by drag and drop.



3.10 Units matched, press send.



3.11 Configuration uploaded successfully.



## Support

A lot of useful information can be found on our website. In case answers can't be found there, feel free to contact us anytime by phone or email.

### Website

<https://www.EmpirBus.com/#faq>

<https://www.EmpirBus.com/#support>

### Email:

[Support@EmpirBus.com](mailto:Support@EmpirBus.com)

### Phone:

+46 522 44 22 22

8 am to 5 pm (CET/CEST), Monday to Friday