



## Connecting the Wemo Dimmer WDS070 to your home wiring

The **Wemo Smart Dimmer with Thread, WDS070** is designed to be used with your existing home wiring and will replace an existing single pole switch. It is not designed to be used in a 3-way or 4-way wiring setup.



**IMPORTANT:** While the Wemo Dimmer WDS070 can be installed easily by anyone, we recommend contacting a licensed electrician if you do not feel comfortable installing it yourself.

**WARNING! Risk of electric shock**  
**AVERTISSEMENT! Risque de choc électrique**

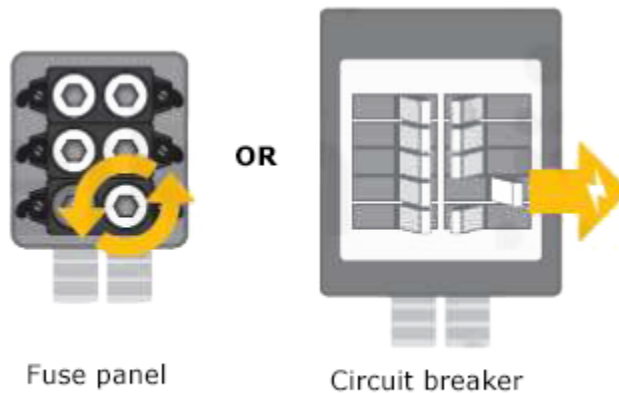
Incorrect installation could be dangerous or illegal. You might need to turn off multiple breakers/fuses for safe installation. Please call a professional electrician if you are unfamiliar or uncomfortable with electrical work.

Une mauvaise installation pourrait s'avérer dangereuse ou illégale. Il se peut que vous ayez besoin de fermer plusieurs disjoncteurs/fusibles pour pouvoir effectuer une installation sécuritaire. Si vous n'êtes pas à l'aise avec les travaux électriques, veuillez appeler un électricien qualifié.

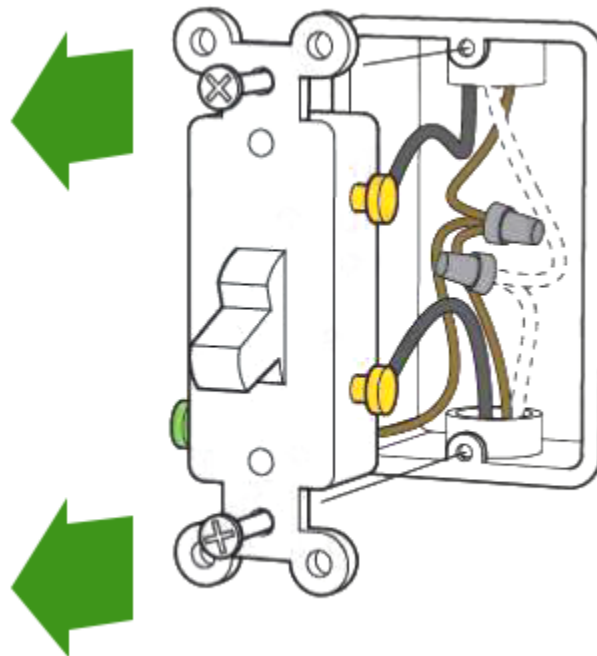
## Physical Installation

**NOTE:** The following illustrations are based on home wiring that follows the most current wiring code standards. It is possible that the wiring in your home will not match the color or number of wires as shown in the photos. Read all instructions carefully while installing.

**Step 1:** Turn OFF the power at your breaker panel or fuse panel to the circuit the Wemo Dimmer WDS070 will be placed on.



**Step 2:** Pull out the existing light switch from the gang box. Do not disconnect any wires at this time.



**Step 3:** Check for what wires you have in your gang box. If your wiring is up to code, you may see the following:

- Two black wires connected to the light switch. One is the incoming (HOT) power from your electrical panel and the other is connected to your lights (LOAD).
- Two white wires are connected to each other (NEUTRAL).
- A copper-colored or green wire (GROUND). This wire may or may not be connected to your existing light switch.

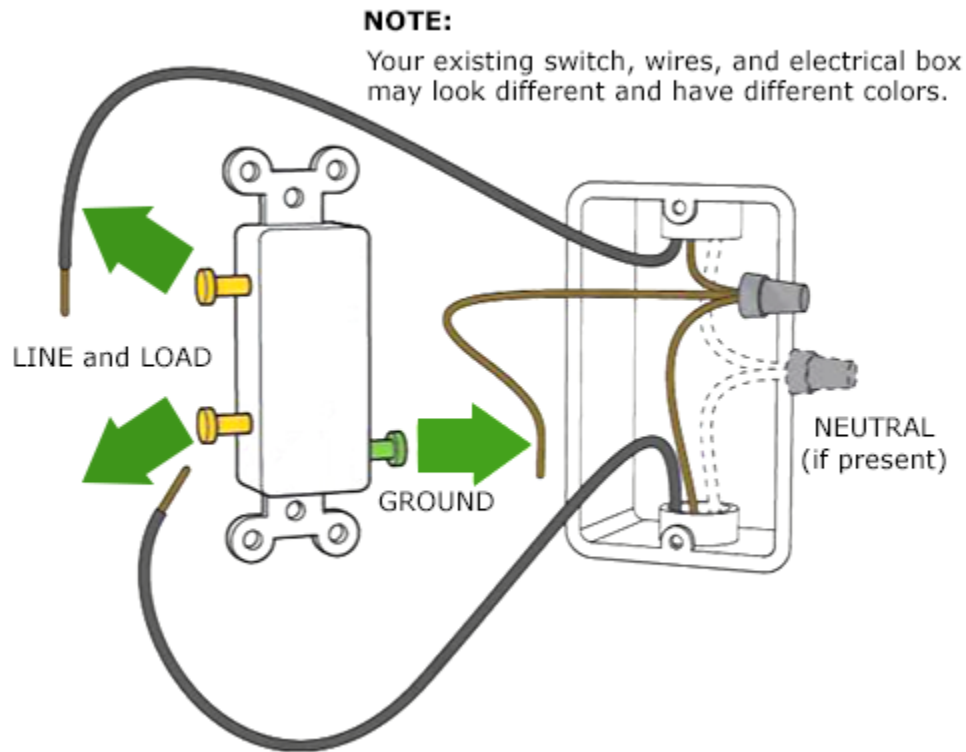
**IMPORTANT:** The colors above are based on current wiring code standards. Depending upon how your house was wired, you may see different colored wires or fewer wires. If you are unsure about the function of any of these wires, contact a licensed electrician.

For basic installation of the Wemo Dimmer WDS070, the following wires are required:

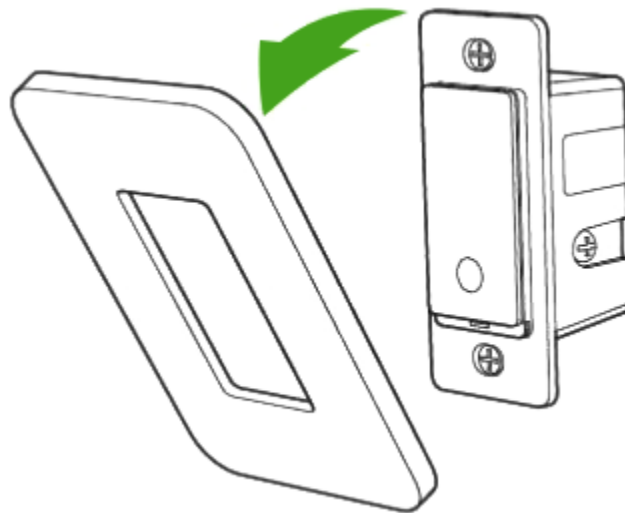
- Incoming (HOT) power wire from your electrical panel
- Outgoing (LOAD) wire to your lights

The NEUTRAL and GROUND wires are not required for installation of the Wemo Dimmer WDS070 but if they are available, it is highly recommended to connect these to your Wemo Dimmer WDS070 for safety.

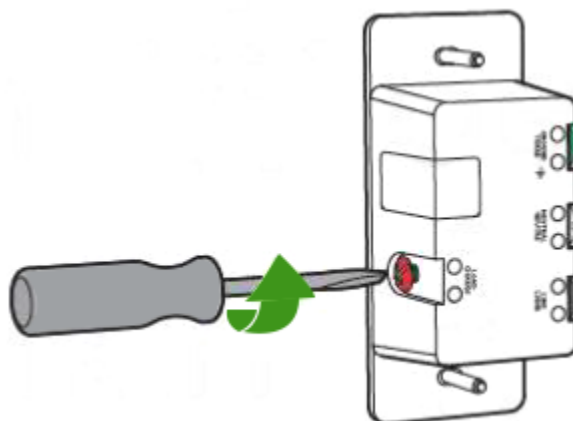
**Step 4:** Remove the wires from the existing light switch.



**Step 5:** Remove the faceplate from the front part of your Wemo Dimmer WDS070.

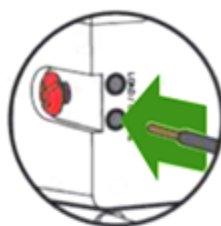


**Step 6:** Loosen the color-coded terminal screws on the sides of the light switch. Only loosen the screws for the wires you will be connecting.

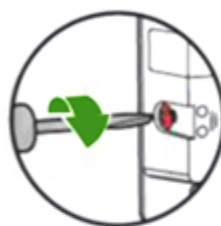


**Step 7:** Connect the wires to the Wemo Dimmer WDS070 using the connection method of your choice.

**A Insert into holes**



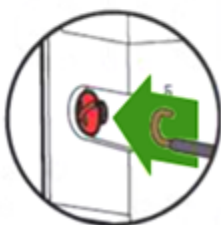
Insert the wire end into either of the holes near the screw.



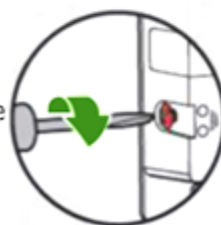
Use a screwdriver to tightly screw the terminal screws back in. These will clamp down on the wire.

**OR**

**B Hook around screw**



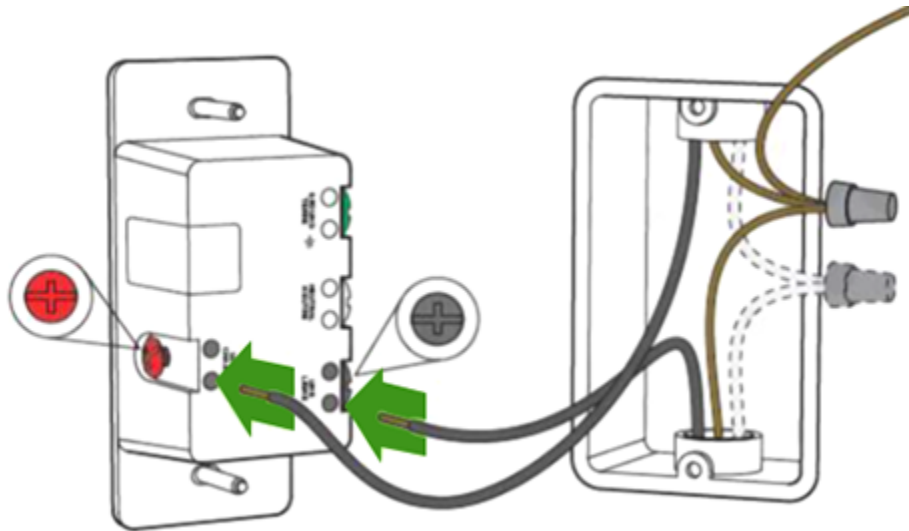
Use pliers to bend the end of the wire clockwise. Hook it around the screw.



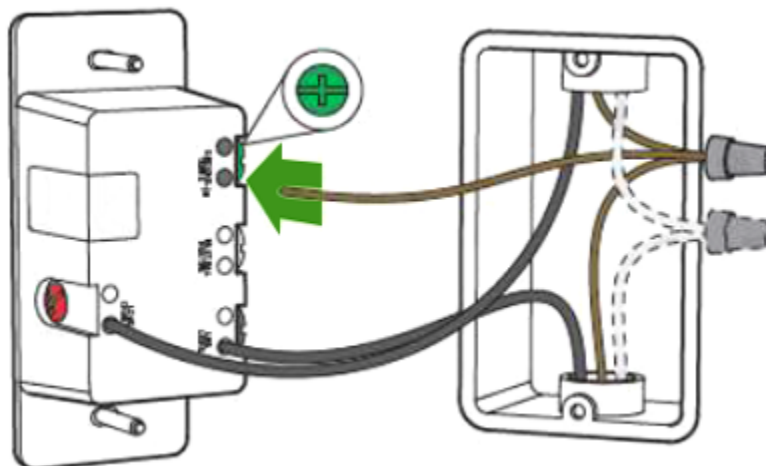
Use a screwdriver to tightly screw the terminal screws back in.

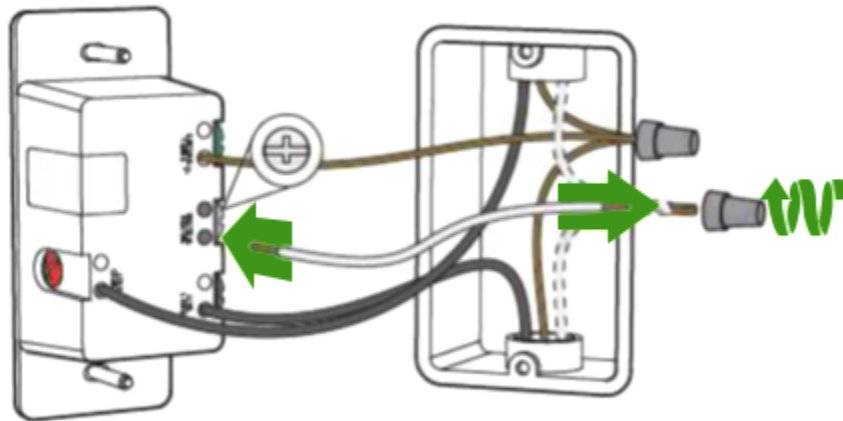
**IMPORTANT:** We recommend allowing at least 9/32 inches of exposed wire when connecting the wire to the Wemo Dimmer WDS070.

Connect the Load and Line wires directly to their designated holes or screw terminals on the Wemo Dimmer WDS070 and tighten the screws.



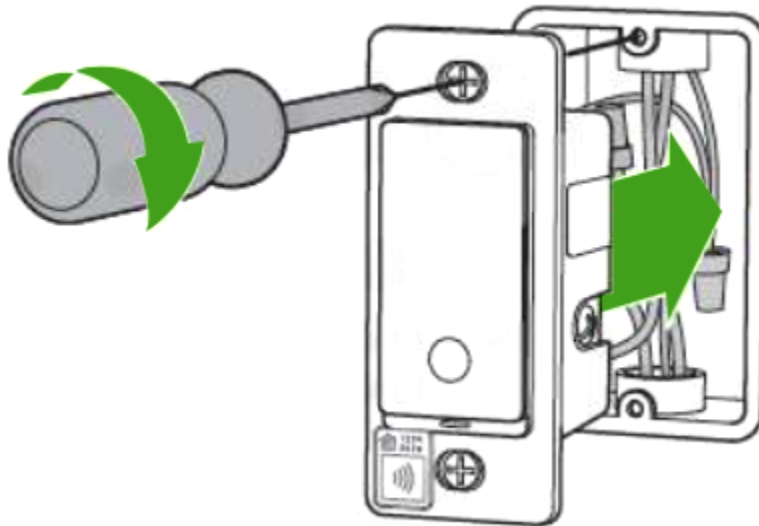
It is recommended to use a pigtail wire when connecting ground or neutral wires to the Wemo Dimmer WDS070. The pigtail wire should be connected to the ground or neutral wires using a wire nut and then the other end connected to the designated terminal on the Wemo Dimmer WDS070.



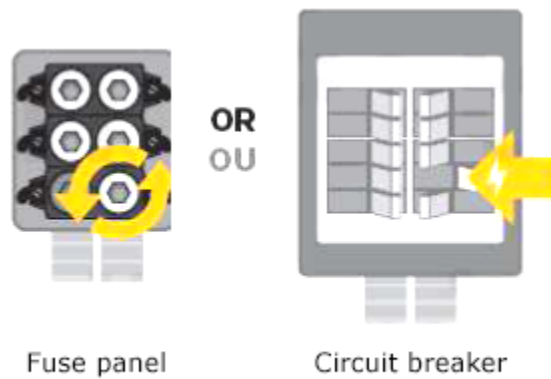


**NOTE:** Per Underwriter Laboratories (UL) regulations, it is recommended that screws be tightened to 1.2 Newton Meters (1.2 Nm) of torque force.

**Step 8:** Tuck the wires back into your gang box and screw the Wemo Dimmer WDS070 into the wall.



**Step 9:** Return to your fuse panel or breaker box and turn ON the power back to the circuit the Wemo Dimmer WDS070 is connected to.



You can now complete setting up the Wemo Dimmer WDS070 with your Apple® Home app. To know how, click [here](https://www.belkin.com/us/support-article?articleNum=334169)(<https://www.belkin.com/us/support-article?articleNum=334169>).