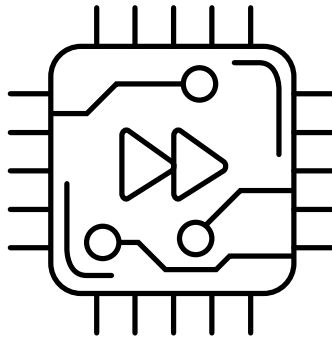


Mounting Instructions

LANCOM AirLancer

0-360Q-5G



General notes

The AirLancer O-360Q-5G comes with materials for wall and pole mounting. The antenna must be installed so that the antenna outputs point downwards. The antenna has SMA connectors to which LANCOM indoor mobile routers can be connected. These screw connections should not be exposed to the weather.

When mounting the antenna, any interference from WLAN transmitters located in the direct neighborhood must be ruled out.

Wall mounting

First attach the antenna bracket **2** to the antenna housing **1** as shown, using the 4 shorter screws **6** supplied, the spring washers **8**, and washers **9** provided. Note that the spring washers **8** are located directly under the screw heads.

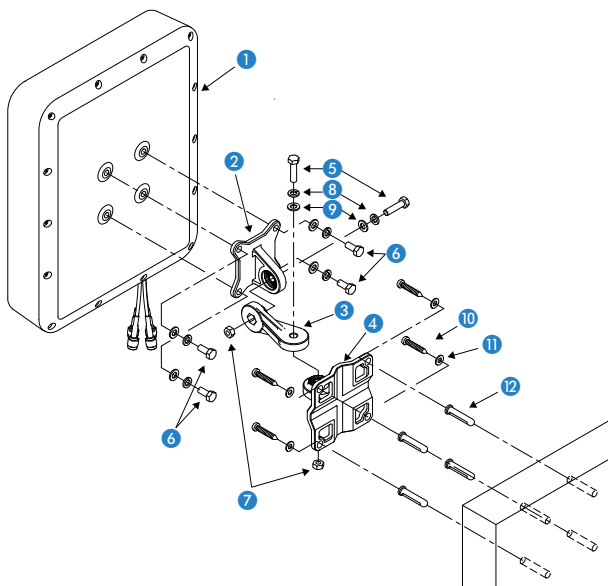
Next, screw the connection arm **3** hand-tight to the antenna mount **2** using one of the supplied longer screws **5** as well as a spring washer **8**, a washer **9**, and a nut **7**.

Now attach the mounting plate **4** as illustrated with suitable screws **10***, washers **11***, and, if necessary, dowels **12*** (depending on the wall material) to a sufficiently load-bearing wall.

Then screw the antenna with the already mounted connection arm **3** hand-tight to the mounting plate **4**. For this purpose, use one of the supplied longer screws **5**, a spring washer **8**, a washer **9**, and a nut **7**. Again, make sure that the spring washer is positioned directly under the screw head.

The antenna can now be aligned horizontally to the right / left and in the vertical tilt.

Finally, tighten the nuts **7** to a suitable torque and check all other connections for sufficient tightness.



Mast mounting

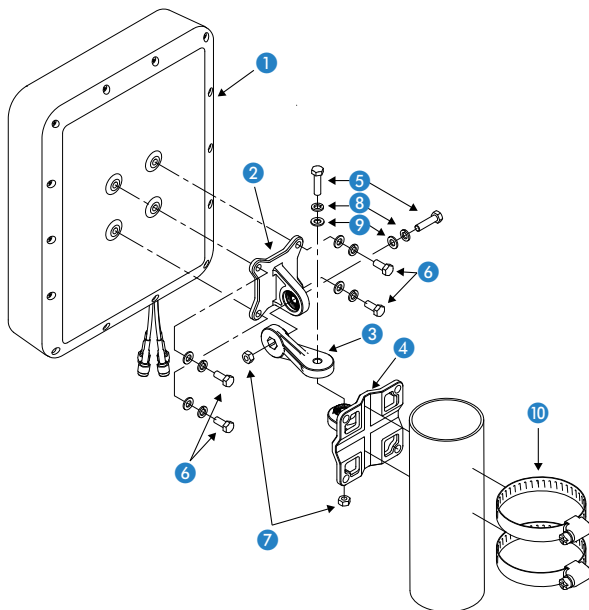
First attach the antenna bracket ② to the antenna housing ① as shown, using the 4 shorter screws ⑥ supplied, the spring washers ⑧, and washers ⑨ provided. Note that the spring washers ⑧ are located directly under the screw heads. Next, screw the connection arm ③ hand-tight to the antenna mount ② using one of the supplied longer screws ⑤ as well as a spring washer ⑧, a washer ⑨, and a nut ⑦.

Now fasten the mounting plate ④ to a sufficiently load-bearing mast with the enclosed mast clamps ⑩ as shown.

Then screw the antenna with the already mounted connection arm ③ hand-tight to the mounting plate ④. For this purpose, use one of the supplied longer screws ⑤, a spring washer ⑧, a washer ⑨, and a nut ⑦. Again, make sure that the spring washer is positioned directly under the screw head.

The antenna can now be aligned horizontally to the right / left and in the vertical tilt.

Finally, tighten the nuts ⑦ to a suitable torque and check all other connections for sufficient tightness.



Scope of delivery of the mounting kit for wall and mast mounting

- 1 Antenna bracket ②
- 1 Connection arm ③
- 1 Mounting plate for wall / mast mounting ④
- 2 Hexagonal screws M5 / 20 mm ⑤
- 4 Hexagonal screws M5 / 12 mm ⑥
- 2 Nuts M5 ⑦
- 6 Spring washers M5 ⑧
- 6 Washers M5 ⑨
- 2 Mast clamps ⑩

Important information

Electrical and Electronic Equipment Act

Please do not throw electrical and electronic scrap into the household waste, it cannot be recycled there. Make sure that your electrical and electronic waste is disposed of in accordance with the currently valid guidelines of your country.

Correct handling of antenna cables

Antenna cables are sensitive HF cables. When laying them, it is therefore important to ensure that the cables are not kinked and that they are bent as little as possible, otherwise the performance of the antenna may be impaired. Likewise, the antenna cables should not be wound too tightly. Antenna cables must not be shortened.

Safety instructions

Parts of the antenna can be electrically conductive. Direct contact with power lines can result in serious injury or even death. The antenna and also a mounting mast must not be installed in the immediate vicinity of a power line. If the antenna has been mounted in a raised and/or exposed position, or if there is a risk of lightning strike, make sure that the antenna is mounted by a professional company and that it is properly grounded according to current standards.

Technical data

Number of integrated antennas	4 (MIMO system)
Frequency range	617-960 MHz / 1,166-1,610 MHz / 1,710-3,800 MHz / 4,200-5,000 MHz
Supported bands	3G / 4G / 5G

Antenna characteristics

Radiation characteristics	Omnidirectional radiator	
VSWR	< 2.0:1	
Gain (without cable loss)	617 - 960 MHz	0.5 dBi
	1,116 - 1,610 MHz	-2.2 dBi
	1,710 - 3,800 MHz	1.7 dBi
	4,200 - 5,000 MHz	-1.8 dBi
Correlation coefficient	< 0.5	
Isolation	> 20 dB	
Max. input power	20 watts	
Impedance	50 Ω	

Mechanical data

Size	233.7 × 183.7 mm (height x width)
Weight	1.000 g
Operating temperature	-40 °C to +85 °C
Color	White
Material	UV-resistant plastics
Intrusion protection	IP65
Mounting options	Wall mount, mast mount
Cables, connectors	Connectors: 4 x SMA (m)

Product

Warranty	2 years for AirLancer and accessories
Item number	61234
Scope of delivery	Antenna, mounting material for wall and mast mounting, mounting instructions