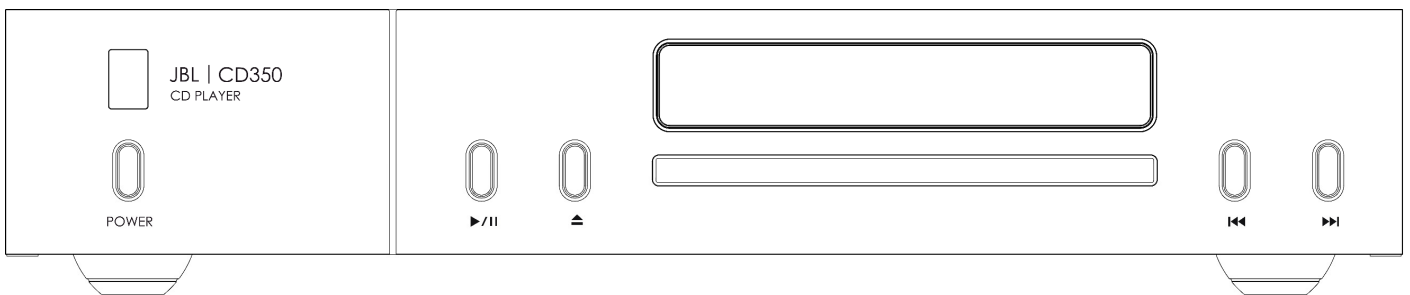




CD350 Classic



Pg 2 – Quick Start Guide – Compact Disc Player

Pg 6 – Guide de démarrage rapide – Lecteur de disques compacts

Pg 10 – Kurzanleitung – Compact Disc Player

Pg 14 – Snelstartgids – Compactdiscspeler

Pg 18 – Guida di avvio rapido – Lettore CD

Pg 22 – Guía de inicio rápido – Reproductor de Discos Compactos

Pg 26 – 빠른 시작 가이드 – 컴팩트 디스크 플레이어

Pg 30 – クイックスタートガイド – クイックスタートガイド

Pg 34 – 快速入门指南 – 光盘播放机

Package Contents

- JBL CD350 Classic CD player
- IR Remote
- 2x AAA Batteries for the remote control
- Region Specific Power Cord(s)
- Safety and Compliance Document
- Quick Start Guide

Thank you for choosing JBL

For over 75 years, JBL has been creating best in class audio equipment for concerts, studios, theaters, and homes around the world. JBL is the trusted choice of leading recording artists and sound engineers.

The JBL CD350 is designed to provide you with reliable CD playback for decades to come, all with exceptional musicality so you get the most enjoyment from your music.

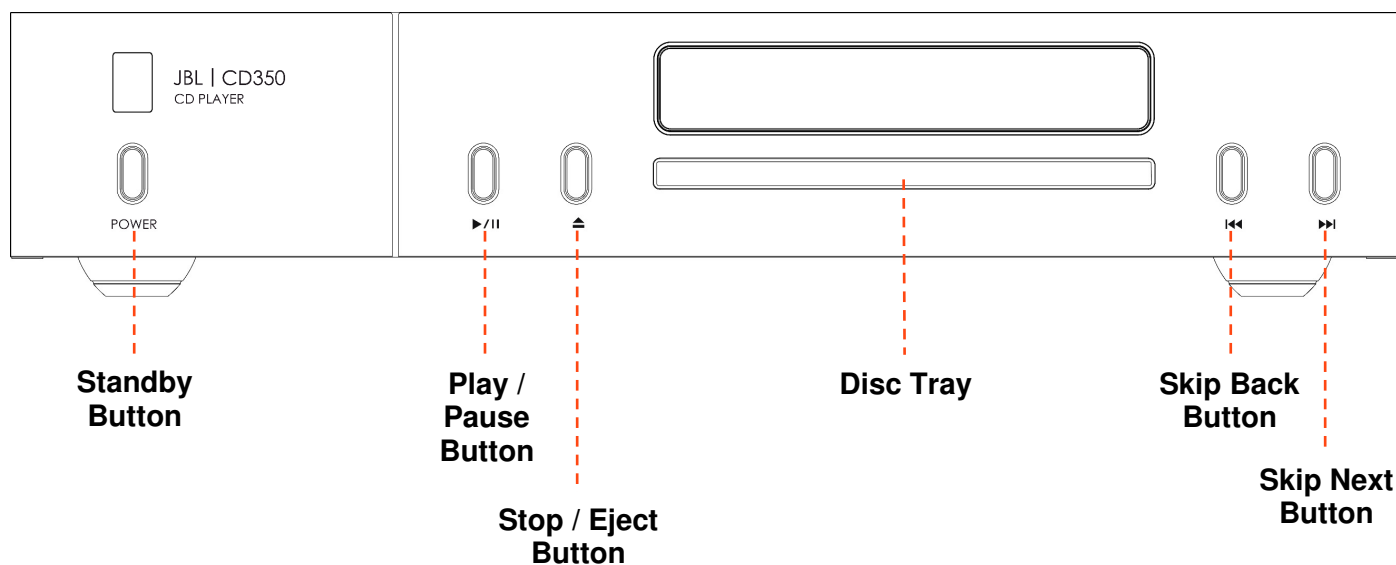
This handbook is a guide to installing and using the CD350 and includes information on its more advanced features.

In the unlikely event of any fault, or you require technical assistance, please contact our dedicated support teams by email using luxurysupport@harman.com, or by telephone using +44 (0) 1707 668012 or +1 888 6914 171. Or, if you simply require further information about JBL products, our network of dealers will be happy to help you. Further information can also be found on the JBL website at JBL.com.

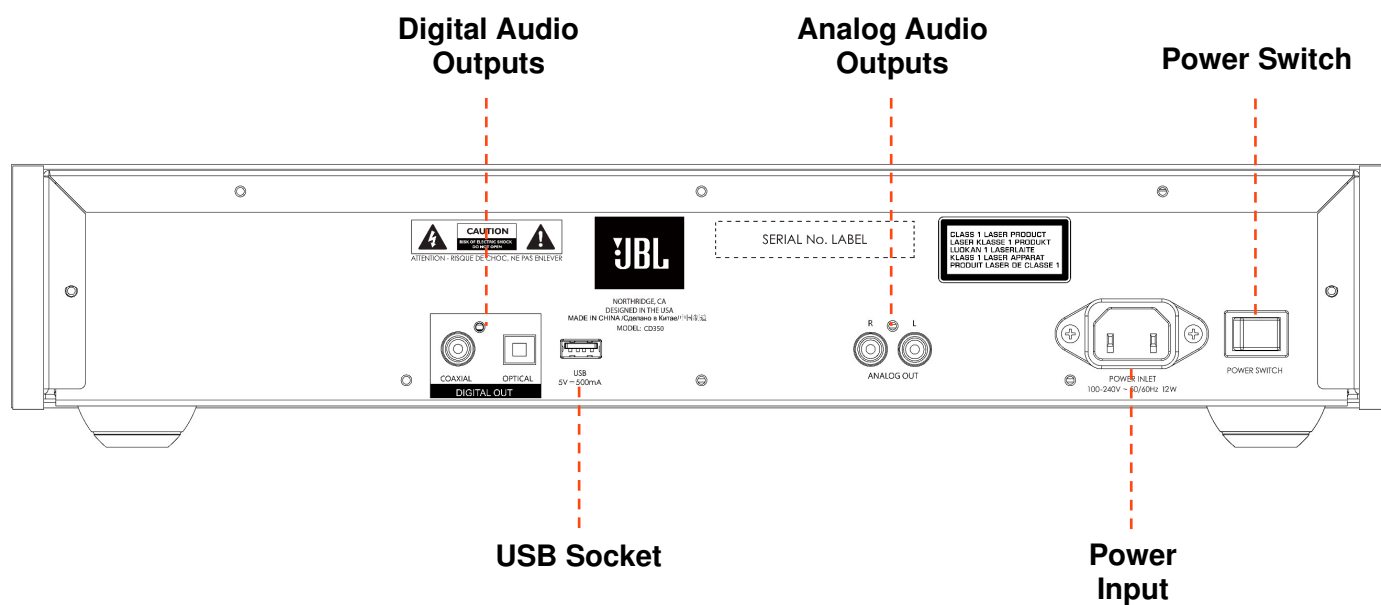
Placing The Unit

- Place the CD player on a level, firm surface, avoiding direct sunlight and sources of heat or damp.
- Do not place the CD350 on top of an amplifier or other source of heat.
- Make sure the remote-control receiver to the left of the front panel display is unobstructed, otherwise this will impair the use of the remote-control.
- Do not place your record deck on top of this unit. Record decks are very sensitive to the noise generated by mains power supplies which will be heard as a background 'hum' if the record deck is too close.
- The normal function of the unit may be disturbed by strong electromagnetic interference. If this occurs, simply reset the unit with the power button, or move the unit to another location.

Front Panel

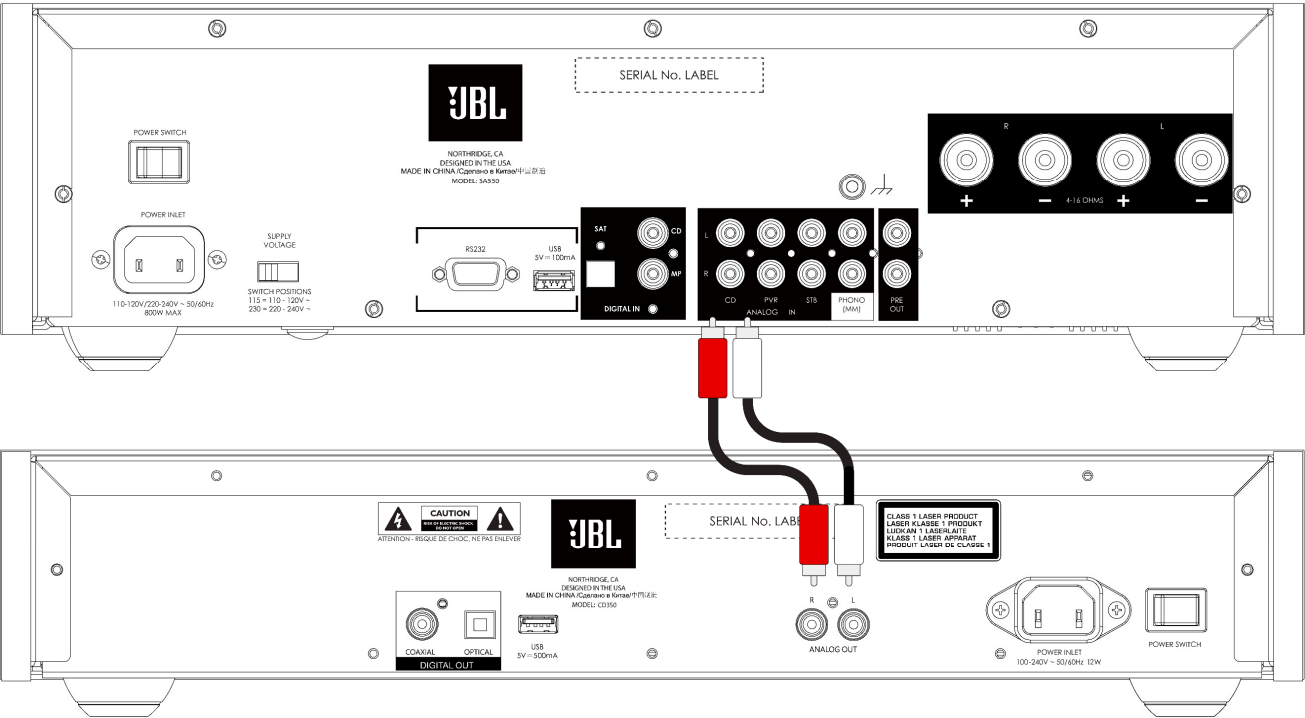


Rear Panel

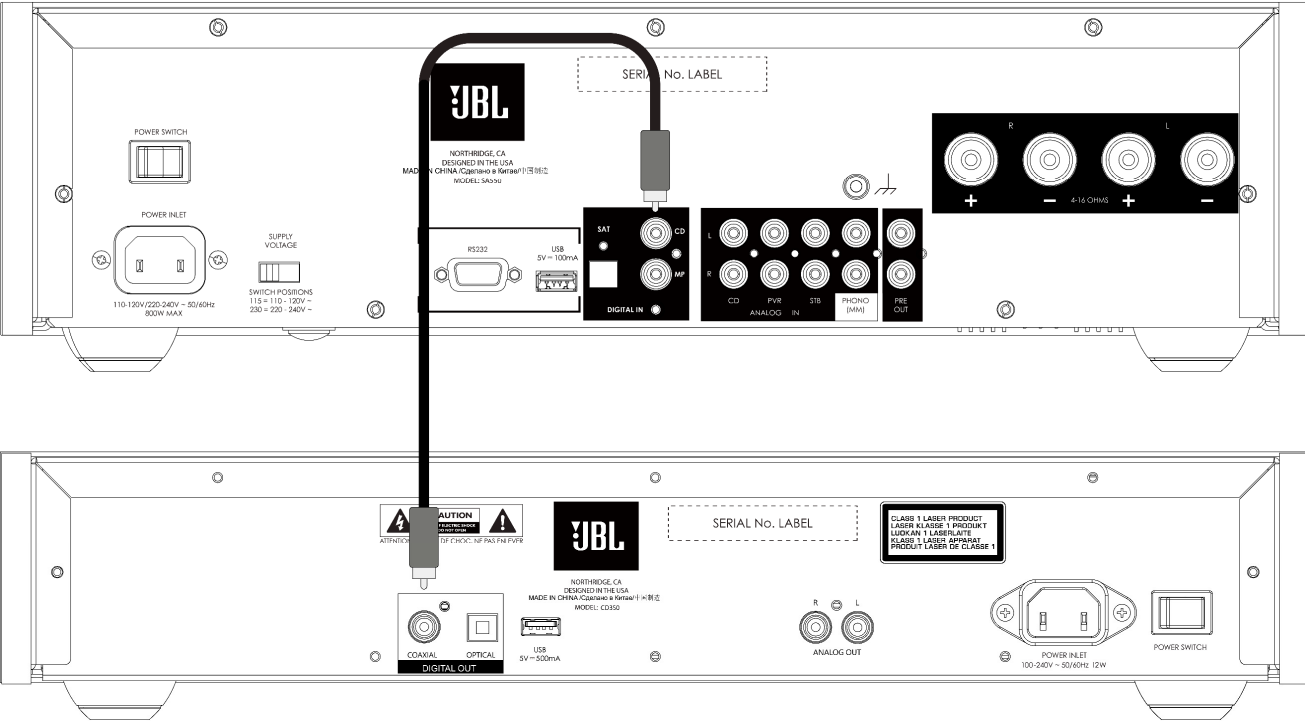


Connecting the CD player

Analog Connection




Digital Connection







Playing a CD

The CD tray can be selected for playback using the **right navigation key** on the remote control.

To **stop the CD playing**, press the Eject button on the front panel or long press  on the remote to

Disc formats

	Compact Discs (audio CDs)
	Write once, recordable Compact Discs (CD-R). Note: recordable discs must be finalized for the player to read them.
	Re-writable, recordable Compact Discs (CD-RW). Note: recordable discs must be finalized for the player to read them.
	CD-TEXT discs. These discs contain text information including track names, album and artist names.

Playing from a USB storage device

The USB input can be selected for playback using the **left navigation key** on the remote control.

File Formats

File Type	Bitrates	Bit Depths	Sample Rates
AAC	8 – 320 kbps		32, 44.1 or 48 kHz
FLAC		16 or 24 bit	32, 44.1, 48, 88.2 or 96 kHz
MP3	32 – 320 kbps		32, 44.1 or 48 kHz
WAV		16 or 24 bit	32, 44.1, 48, 88.2 or 96 kHz
WMA	48 – 192 kbps		32, 44.1 or 48 kHz

Specifications

Outputs	
DAC	PCM1796
Frequency response	20Hz - 20kHz \pm 0.05dB
Nominal output level	2.0 \pm 0.3V
Total harmonic distortion + Noise	0.007%
Signal/Noise ratio (A-wtd)	105dB
General	
Mains voltage	100–240V, 50–60Hz
Maximum power consumption	12W
Dimensions in mm (Including feet, control knob and connectors)	448 W x 89 H x 290 D
Weight (net)	5.8 kg
Weight (gross)	8.0 kg



HARMAN International, Incorporated

8500 Balboa Boulevard, Northridge, CA 91329 USA

Danzigerkade 16 1013 AP Amsterdam, Netherlands

Ground Floor, Westside 2, London Road, Apsley, Hemel Hempstead,
Hertfordshire, HP3 9TD, United Kingdom

www.jbl.com

© 2023 HARMAN International Industries, Incorporated. All rights reserved.

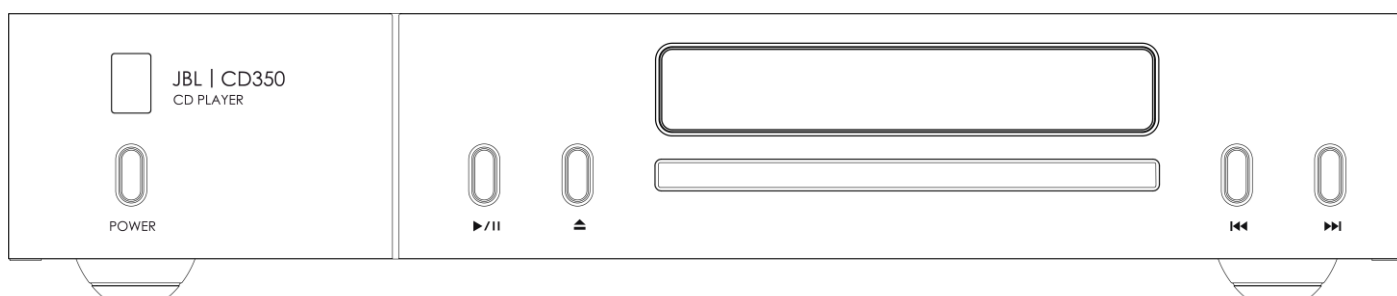
JBL is a trademarks of HARMAN International Industries, Incorporated,
registered in the United States and/or other countries.

Features, specifications, and appearance are subject to change without notice.



CD350 Classic - Compact Disc Player

Owner's Manual



IMPORTANT SAFETY INSTRUCTIONS

1. Read these instructions.
2. Keep these instructions.
3. Heed all warnings.
4. Follow all instructions.
5. Clean only with a dry cloth.
6. Do not block any ventilation openings. Install this apparatus in accordance with the manufacturer's instructions.
7. Do not install this apparatus near any heat sources such as radiators, heat registers, stoves or other apparatus (including amplifiers) that produce heat.
8. Do not defeat the safety purpose of the polarized or grounding-type plug. A polarized plug has two blades with one wider than the other. A grounding-type plug has two blades and a third grounding prong. The wide blade or the third prong is provided for your safety. If the provided plug does not fit into your outlet, consult an electrician for replacement of the obsolete outlet.
9. Protect the power cord from being walked on or pinched, particularly at plugs, convenience receptacles and the point where they exit from the apparatus.
10. Use only attachments/accessories specified by the manufacturer.

11. Use only with the cart, stand, tripod, bracket, or table specified by the manufacturer or sold with the apparatus. When a cart is used, use caution when moving the cart/apparatus combination to avoid injury from tip-over.
12. Unplug this apparatus during lightning storms or when unused for long periods of time.
13. Refer all servicing to qualified service personnel. Servicing is required when the apparatus has been damaged in any way, such as when the power-supply cord or plug is damaged, liquid has been spilled or objects have fallen into the apparatus, or the apparatus has been exposed to rain or moisture, does not operate normally or has been dropped.
14. To disconnect this apparatus from the AC mains completely, disconnect the power-supply cord plug from the AC receptacle.
15. The mains plug of the power-supply cord shall remain readily operable.
16. This apparatus is intended to be used only with the power supply and/or charging cable provided by the manufacturer.



The following instructions may not apply to waterproof devices. Refer to your device user manual or quick start guide for more waterproof instruction if any.

- Do not use this apparatus near water.
- Do not expose this apparatus to dripping or splashing, and ensure that no objects filled with liquids, such as vases, are placed on the apparatus.

WARNING: TO REDUCE THE RISK OF FIRE OR ELECTRIC SHOCK, DO NOT EXPOSE THIS APPARATUS TO RAIN OR MOISTURE.

CAUTION	
RISK OF ELECTRIC SHOCK. DO NOT OPEN.	
	THIS SYMBOL ON THE PRODUCT MEANS THERE IS UNINSULATED, DANGEROUS VOLTAGE WITHIN THE PRODUCT ENCLOSURE THAT MAY PRESENT A RISK OF ELECTRICAL SHOCK.
	THIS SYMBOL ON THE PRODUCT MEANS THERE ARE IMPORTANT OPERATING AND MAINTENANCE INSTRUCTIONS IN THIS GUIDE.

Visit the product page at **JBL.com** and download the Safety Sheet for a full list of safety instructions.

Class II Product

This equipment is a Class II or double insulated electrical appliance. It has been designed in such a way that it does not require a safety connection to electrical earth ("ground" in the U.S.).

Table of Contents

IMPORTANT SAFETY INSTRUCTIONS.....	2
Class II Product	2
TABLE OF CONTENTS.....	3
Thank you for choosing JBL.....	4
Package Contents	4
Placing The Unit	4
Front Panel	5
Rear Panel.....	6
Remote Control.....	7
Connecting the CD player	8
Analog Connection	8
Top Tips.....	8
Digital Connection.....	9
Top Tips.....	9
OPERATION	10
Power	10
Standby	10
Auto Standby	10
Playing a CD.....	10
Playing from a USB storage device.....	10
Menu	11
Menu Tree	11
Supported Formats	11
Disc formats.....	11
File Formats.....	12
Troubleshooting	13
Specifications	13

Thank you for choosing JBL

For over 75 years, JBL has been creating best in class audio equipment for concerts, studios, theaters, and homes around the world. JBL is the trusted choice of leading recording artists and sound engineers.

The JBL CD350 is designed to provide you with reliable CD playback for decades to come, all with exceptional musicality so you get the most enjoyment from your music.

This handbook is a guide to installing and using the CD350 and includes information on its more advanced features.

In the unlikely event of any fault, or you require technical assistance, please contact our dedicated support teams by email using luxurysupport@harman.com, or by telephone using +44 (0) 1707 668012 or +1 888 6914 171. Or, if you simply require further information about JBL products, our network of dealers will be happy to help you. Further information can also be found on the JBL website at JBL.com.

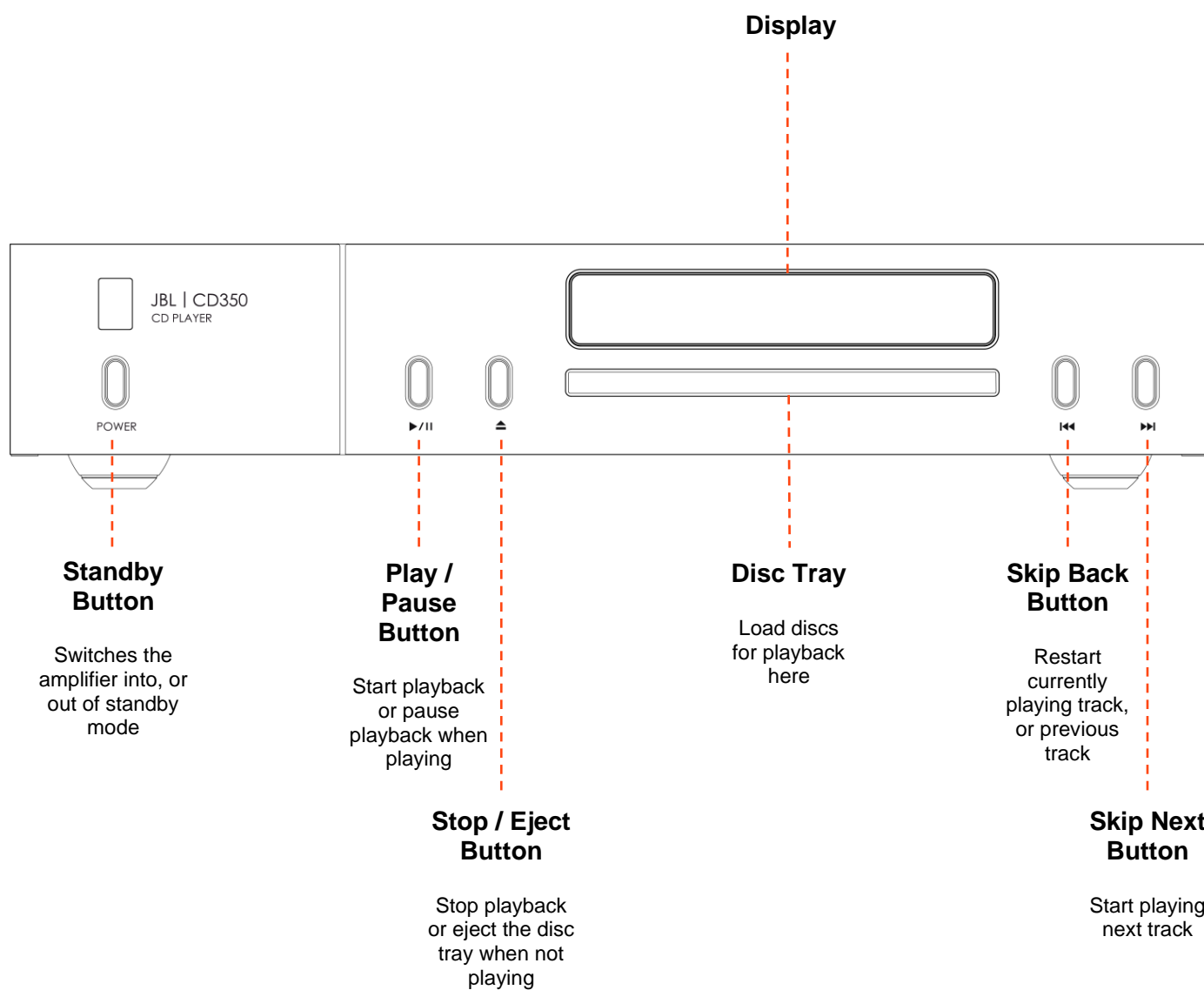
Package Contents

- JBL CD350 Classic CD player
- IR Remote
- 2x AAA Batteries for the remote control
- Region Specific Power Cords
- Quick Start Guide
- Safety and Compliance Document

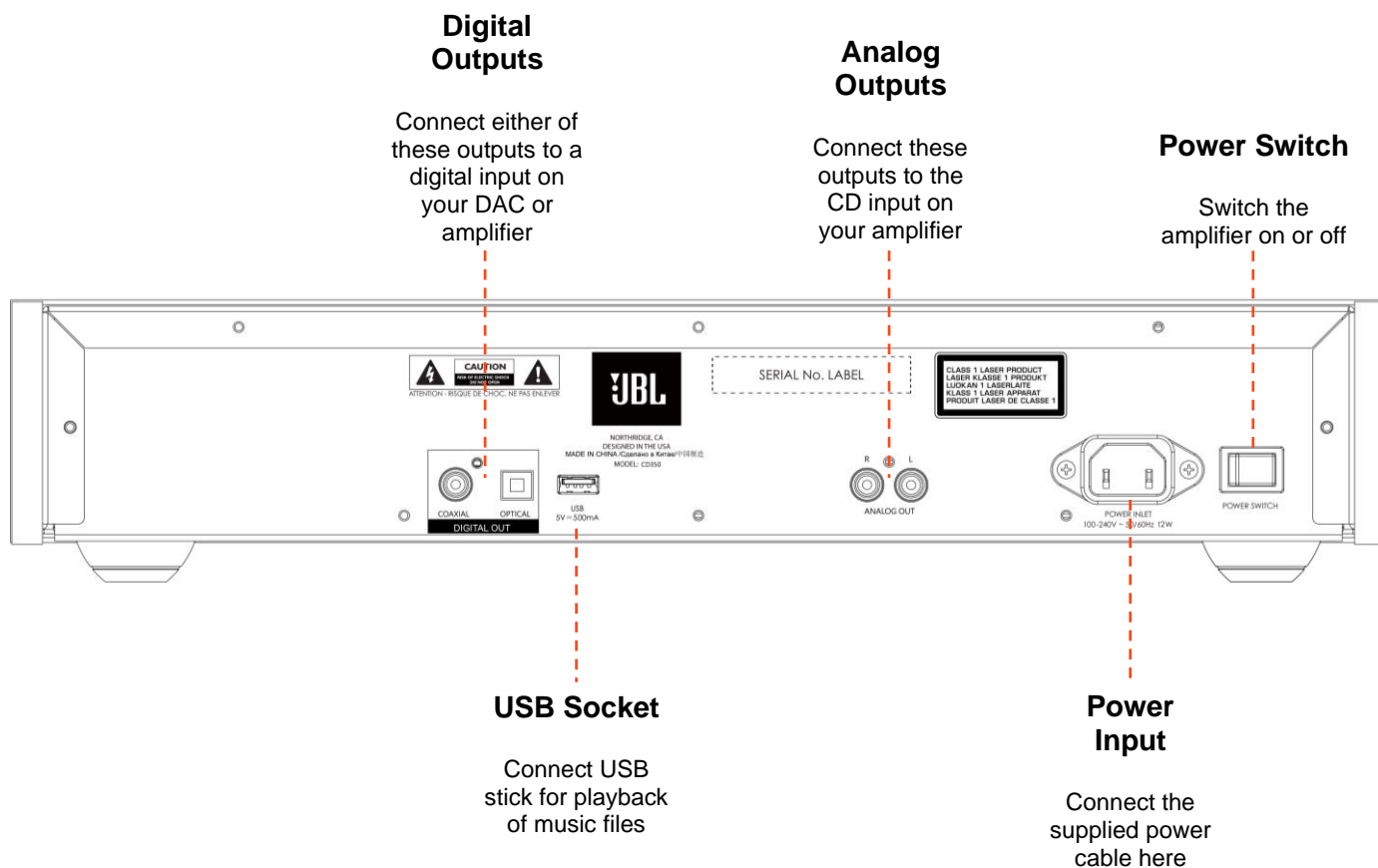
Placing The Unit

- Place the CD player on a level, firm surface, avoiding direct sunlight and sources of heat or damp.
- Do not place the CD350 on top of an amplifier or other source of heat.
- Make sure the remote-control receiver to the left of the front panel display is unobstructed, otherwise this will impair the use of the remote-control.
- Do not place your record deck on top of this unit. Record decks are very sensitive to the noise generated by mains power supplies which will be heard as a background 'hum' if the record deck is too close.
- The normal function of the unit may be disturbed by strong electromagnetic interference. If this occurs, simply reset the unit with the power button, or move the unit to another location.

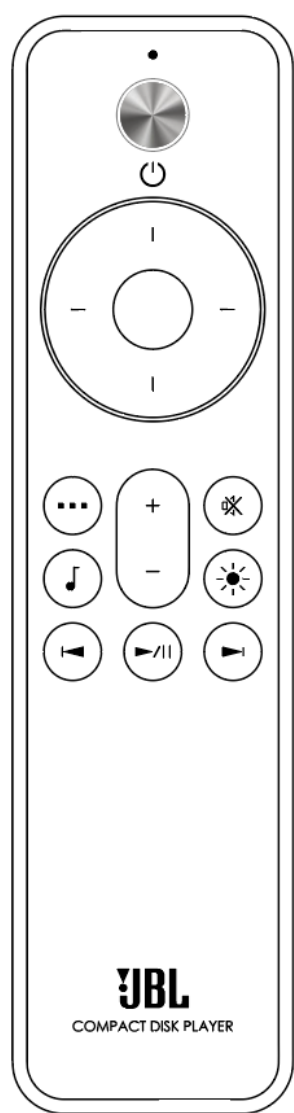
Front Panel



Rear Panel



Remote Control



	Toggle Standby Operation
	Menu Navigation Center button to select or play mode (random/repeat) during playback Left = Play from USB storage Right = Play from CD tray
	Amp Volume Control (JBL SA750 or SA550)
	Amp Mute On or Off (JBL SA750 or SA550)
	Display Brightness
	Transport Keys – Play/Pause (long press to stop), skip back/forward
	Menu button
	Music info button

Note: Incorrect use of batteries can have hazardous results. Do not mix old and new batteries together. Do not use non-identical batteries together. Although they may look similar, different batteries may have different voltages. Ensure the batteries are inserted in the correct direction.

Remove batteries from equipment that is not going to be used for a month or more. When disposing of used batteries, please comply with governmental or local regulations that apply in your country or area.

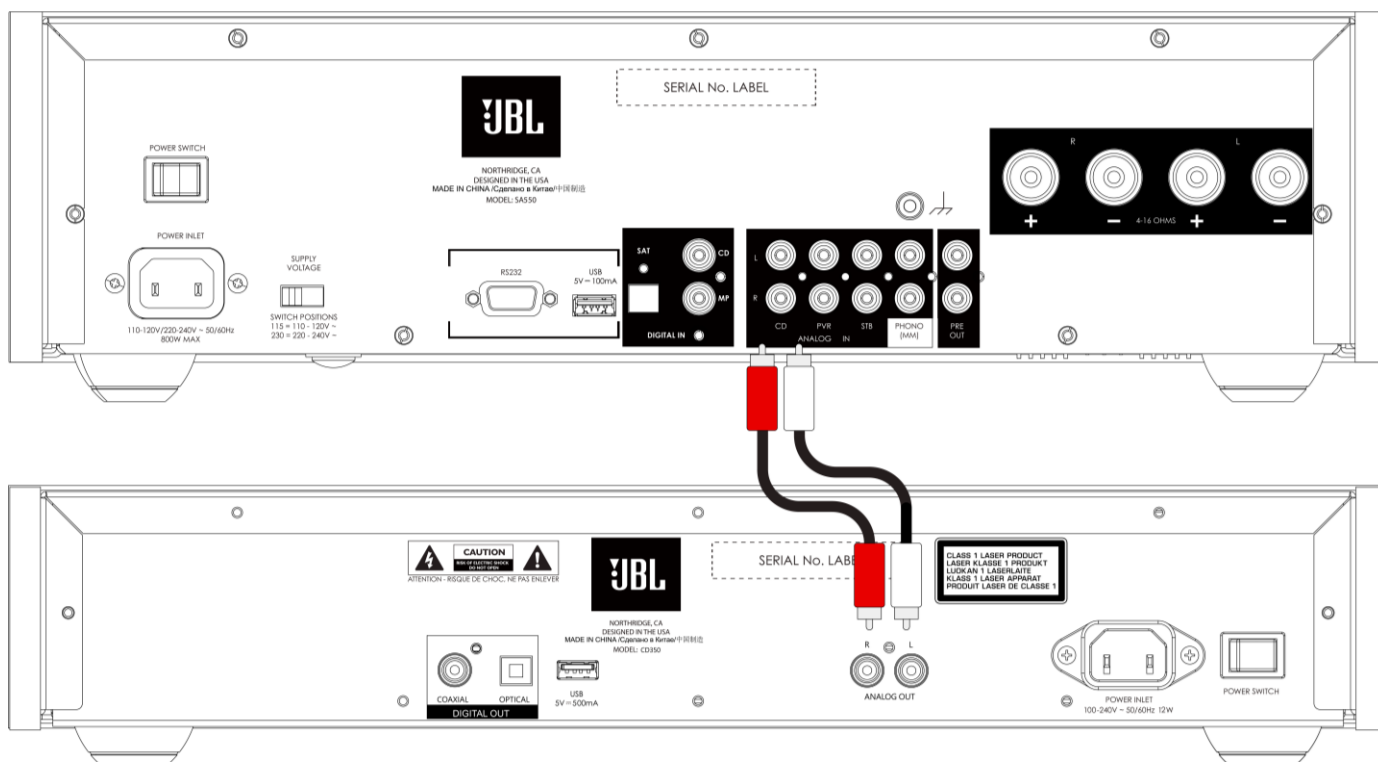
Connecting the CD player

Analog Connection

Step 1, ensure power is disconnected from the CD player and amplifier.

Step 2, using analog interconnect cables, connect the right (R), red terminal of the analog output on the CD player to the right (R), usually red terminal of the CD input on your amplifier.

Step 3, connect the left (L), white terminal of the analog output on the CD player to the left (L), usually white terminal of the CD input on your amplifier.



Top Tips

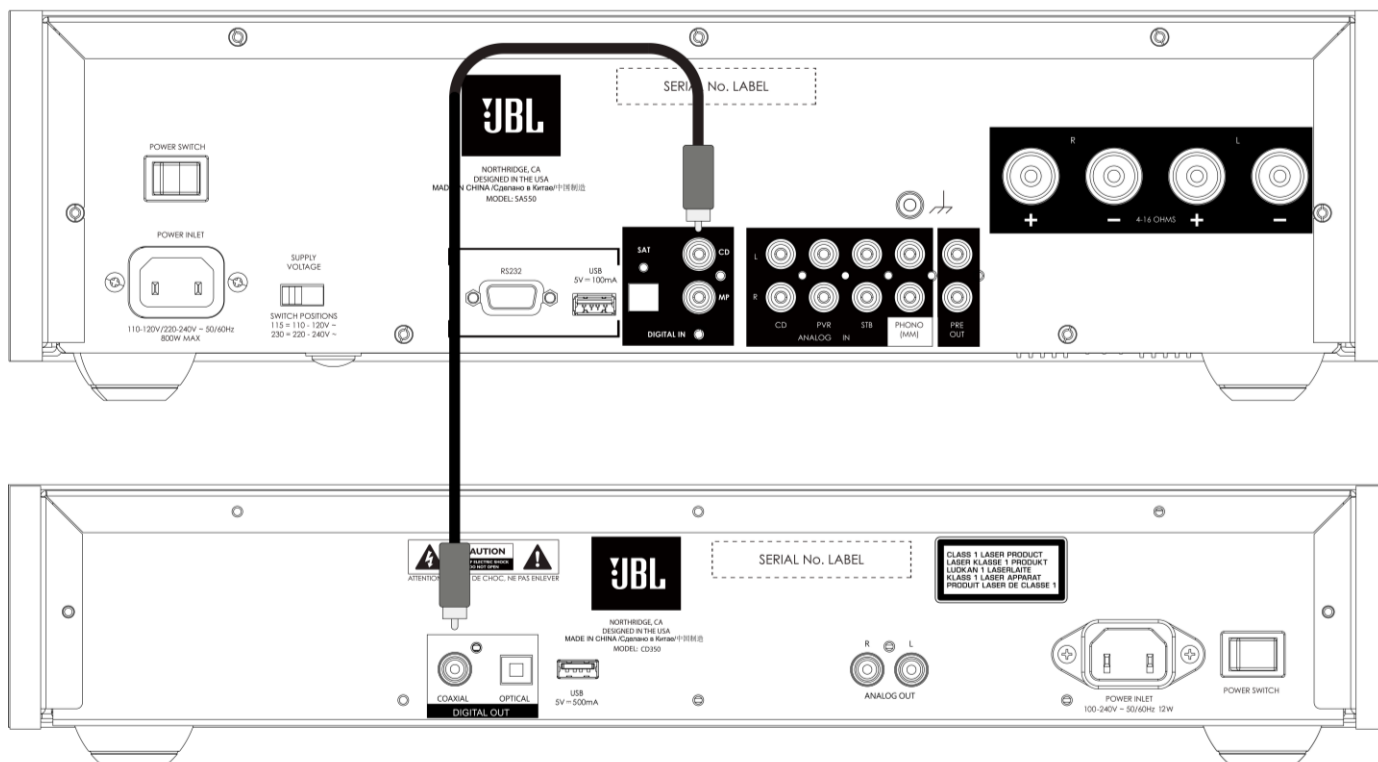
- After making connections: switch the amplifier on with no input and reduce the volume to minimum. Select the CD input, and then slowly increase the volume to a suitable listening level whilst playing a CD. This technique will avoid loud sounds or product damage in the event of incorrect connection.
- If you are unsure as to how your system should be connected, please contact your JBL dealer who will be happy to help you.

Digital Connection

Step 1, ensure power is disconnected from the CD player and amplifier.

Step 2, using a digital coax interconnect cable, connect the digital coaxial output on the CD player to a digital coaxial input on your amplifier.

Alternatively, using an optical Toslink interconnect cable, connect the digital optical output on the CD player to a digital optical input on your amplifier.



Top Tips

- Digital connections are recommended when using the CD350 with either the JBL SA550 or SA750 amplifiers.
- After making connections: switch the amplifier on with no input and reduce the volume to minimum. Select the input the corresponds to your connection, and then slowly increase the volume to a suitable listening level whilst playing a CD. This technique will avoid loud sounds or product damage in the event of incorrect connection.
- If you are unsure as to how your system should be connected, please contact your JBL dealer who will be happy to help you.

Operation

Power

The power switch on the rear panel switches the CD player on or off. When you have finished making connections, switch the player on.

Standby

The Standby button on the front panel switches the CD player between **standby** and **on** (operating).


Auto Standby

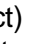

This CD player is designed to enter standby automatically after 20 minutes with no audio playing and no user interaction. This is to meet international power consumption regulations. This can be turned off in the menu. To use the menu, see page 11.

Playing a CD

The JBL CD350 can play audio and data CDs. Please refer to supported media on page 11.

If not already selected, the CD tray can be selected for playback using the **right navigation key** on the remote control.

To open the CD tray, press the  (eject) button on the front of the CD player, the drawer will open. Place your CD on the tray with the label facing up (shiny side down).

Now press the  (eject) button on the front of the CD player to close the drawer, or press  (play) to close the drawer and start playback.

Note: This CD player is only designed to accept compact discs. Ingress of other items (including but not limited to foodstuffs, beverages or appendages) is likely to cause damage or injury which will not be covered by the warranty.

Playing from a USB storage device

The JBL CD350 can play music files stored on a USB flash drive. Please refer to supported media on page 12.

If not already selected, the USB input can be selected for playback using the **left navigation key** on the remote control.

Insert the USB storage device into the USB socket on the rear panel. Do not use a USB extension cable.

Now press  (play) to start playback.

To change folder, use the up or down navigation keys on the remote control.

Note: The player will play files in a folder in chronological order.

Menu

To access the menu, press the  (MENU) button on the remote control.





To navigate the menu, use the navigation buttons on the remote control.

Menu Tree

Display	Select Display Brightness. Default is Full .
DAC Filter	Select a digital filter for the analog outputs. Default is Slow .
Eco Standby	When enabled, the CD player will enter standby after 20 minutes with no user interaction or playback. Default is On .
Disc Auto	Disables automatic playback start when a CD is inserted. Default is On .
Reset to Defaults	Restores factory settings.

Supported Formats

Disc formats

	Compact Discs (audio CDs)
	Write once, recordable Compact Discs (CD-R). Note: recordable discs must be finalized for the player to read them.
	Re-writable, recordable Compact Discs (CD-RW). Note: recordable discs must be finalized for the player to read them.
	CD-TEXT discs. These discs contain text information including track names, album and artist names.


File Formats

File Type	Bitrates	Bit Depths	Sample Rates
AAC	8 – 320 kbps		32, 44.1 or 48 kHz
FLAC		16 or 24 bit	32, 44.1, 48, 88.2 or 96 kHz
MP3	32 – 320 kbps		32, 44.1 or 48 kHz
WAV		16 or 24 bit	32, 44.1, 48, 88.2 or 96 kHz
WMA	48 – 192 kbps		32, 44.1 or 48 kHz

Notes:

- Files will be played from Disc or USB based on the date of creation. The first recorded will be the first to be played.
- When playing a file that has a variable bitrate, the track time displayed might not be accurate.
- DRM content (files with Digital Rights Management) cannot be played.
- The maximum folder depth is 9 folders.
- The maximum number of folders is 512.
- The maximum number of files is 65535.
- USB flash drives must be formatted using FAT16 or FAT32 file systems.

Troubleshooting

Problem	Check the following
No sound	<p>Is the CD player correctly plugged in and switched on?</p> <p>Is the CD player connected correctly to your amplifier?</p> <p>Is your amplifier on, with the correct input selected, and not muted?</p>
Inserted Disc does not play	<p>Is the disc scratched or dirty?</p> <p>Is the disc inserted the wrong way up? The disc should be inserted shiny side down.</p> <p>Is the disc a supported type?</p> <p>Is the CD player in USB mode?</p>
Unable to play music files	<p>Is the USB flash drive connected properly?</p> <p>Are the files you are trying to play supported by this CD player?</p> <p>If you are trying to play files from a disc, has the disc been finalized after recording?</p>
Sound cuts-out unexpectedly	<p>Is the disc scratched or dirty?</p> <p>Playback can be interrupted by vibration or impact to the CD player. The CD player should not be subject to movement or vibration when playing.</p>
The CD player does not respond to the remote control	<p>Are there fresh batteries in the remote control?</p> <p>Are you pointing the remote control towards the CD player display without obstruction?</p>
The front panel display is blank	<p>Is the CD player correctly plugged in and switched on?</p> <p>Is the CD player in standby?</p> <p>Is the display dimmed to "Off"?</p> <p>Press the  button on the remote control.</p>

Specifications

Outputs	
DAC	PCM1796
Frequency response	20Hz - 20kHz \pm 0.05dB
Nominal output level	2.0 \pm 0.3V
Total harmonic distortion + Noise	0.007%
Signal/Noise ratio (A-wtd)	105dB
General	
Mains voltage	100–240V, 50–60Hz
Maximum power consumption	12W
Dimensions in mm (Including feet, control knob and connectors)	448 W x 89 H x 290 D
Weight (net)	5.8 kg
Weight (gross)	7.5 kg



www.jbl.com/specialtyaudio



Important Safety Instructions

ENGLISH

IMPORTANT SAFETY INSTRUCTIONS

For all products:

1. Read these instructions.
2. Keep these instructions.
3. Heed all warnings.
4. Follow all instructions.
5. Clean only with a dry cloth.
6. Do not block any ventilation openings. Install this apparatus in accordance with the manufacturer's instructions.
7. Do not install this apparatus near any heat sources such as radiators, heat registers, stoves or other apparatus (including amplifiers) that produce heat.
8. Do not defeat the safety purpose of the polarized or grounding-type plug. A polarized plug has two blades with one wider than the other. A grounding-type plug has two blades and a third grounding prong. The wide blade or the third prong is provided for your safety. If the provided plug does not fit into your outlet, consult an electrician for replacement of the obsolete outlet.
9. Protect the power cord from being walked on or pinched, particularly at plugs, convenience receptacles and the point where they exit from the apparatus.
10. Use only attachments/accessories specified by the manufacturer.
11. Use only with the cart, stand, tripod, bracket or table specified by the manufacturer or sold with the apparatus. When a cart is used, use caution when moving the cart/apparatus combination to avoid injury from tip-over.
12. Unplug this apparatus during lightning storms or when unused for long periods of time.



13. Refer all servicing to qualified service personnel. Servicing is required when the apparatus has been damaged in any way, such as when the power-supply cord or plug is damaged, liquid has been spilled or objects have fallen into the apparatus, or the apparatus has been exposed to rain or moisture, does not operate normally or has been dropped.
14. To disconnect this apparatus from the AC mains completely, disconnect the power-supply cord plug from the AC receptacle.
15. The mains plug of the power-supply cord shall remain readily operable.
16. This apparatus is intended to be used only with the power supply and/or charging cable provided by the manufacturer.

The following instructions may not apply to waterproof devices. Refer to your device user manual or quick start guide for more waterproof instruction if any.

- Do not use this apparatus near water.
- Do not expose this apparatus to dripping or splashing, and ensure that no objects filled with liquids, such as vases, are placed on the apparatus.

WARNING: TO REDUCE THE RISK OF FIRE OR ELECTRIC SHOCK, DO NOT EXPOSE THIS APPARATUS TO RAIN OR MOISTURE.

CAUTION

RISK OF ELECTRIC SHOCK. DO NOT OPEN.



THIS SYMBOL ON THE PRODUCT MEANS THERE IS UNINSULATED, DANGEROUS VOLTAGE WITHIN THE PRODUCT ENCLOSURE THAT MAY PRESENT A RISK OF ELECTRICAL SHOCK.



THIS SYMBOL ON THE PRODUCT MEANS THERE ARE IMPORTANT OPERATING AND MAINTENANCE INSTRUCTIONS IN THIS GUIDE.

CAUTION FCC AND IC STATEMENT FOR USERS (USA AND CANADA ONLY)

This device complies with part 15 of the FCC Rules. Operation is subject to the following two conditions: (1) This device may not cause harmful interference, and (2) this device must accept any interference received, including interference that may cause undesired operation.

CAN ICES-003(B)/NMB-003(B)

FCC SDOC SUPPLIER'S DECLARATION OF CONFORMITY

HARMAN International hereby declares that this equipment is in compliance with the FCC Part 15 Subpart B.

The declaration of conformity may be consulted in the support section of our Web site, accessible from www.jbl.com/specialtyaudio

Federal Communication Commission Interference Statement

This equipment has been tested and found to comply with the limits for a Class B digital device, pursuant to Part 15 of the FCC Rules. These limits are designed to provide reasonable protection against harmful interference in a residential installation. This equipment generates, uses and can radiate radio frequency energy and, if not installed and used in accordance with the instructions, may cause harmful interference to radio communications. However, there is no guarantee that interference will not occur in a particular installation. If this equipment does cause harmful interference to radio or television reception, which can be determined by turning the equipment off and on, the user is encouraged to try to correct the interference by one or more of the following measures:

- Reorient or relocate the receiving antenna.
- Increase the separation between the equipment and receiver.
- Connect the equipment into an outlet on a circuit different from that to which the receiver is connected.
- Consult the dealer or an experienced radio/TV technician for help.

Caution: Changes or modifications not expressly approved by HARMAN could void the user's authority to operate the equipment.

For Products That Transmit RF Energy:

(i) FCC AND IC INFORMATION FOR USERS

This device complies with Part 15 of the FCC rules and Industry Canada license-exempt RSS standard(s). Operation is subject to the following two conditions: (1) This device may not cause harmful interference; and (2) this device must accept any interference received, including interference that may cause undesired operation.

(ii) FCC/IC Radiation Exposure Statement

This equipment complies with FCC and ICSED radiation exposure limits set forth for an uncontrolled environment. This equipment should be installed and operated with minimum distance 20cm between the radiator & your body.

In case this equipment has to subject to FCC/IC SAR (Specific Absorption Rate) exposure test, this equipment is designed to meet the requirements for exposure to radio waves established by the FCC and ICSED. These requirements set a SAR limit of 1.6 W/kg averaged over one gram of tissue. The highest SAR value reported under this standard during product certification for use when properly worn on the body or on the head, with no separation. To meet RF exposure guidelines and reduce exposure to RF energy during the operation, this equipment should be positioned at least this distance away from the body or the head.

For radio equipment operates in 5150-5850MHz

FCC and IC Caution:

High power radars are allocated as primary users of the 5.25 to 5.35 GHz and 5.65 to 5.85 GHz bands. These radar stations can cause interference with and/or damage to LE LAN (Licence-Exempt Local Area Network) devices. No configuration controls are provided for this wireless equipment allowing any change in the frequency of operations outside the FCC grant of authorization for US operation according to Part 15.407 of the FCC rules.

IC Caution:

User should also be advised that:

- (i) The device for operation in the band 5150 - 5250 MHz is only for indoor use to reduce the potential for harmful interference to co-channel mobile satellite systems; (ii) the maximum antenna gain permitted for devices in the bands 5250 - 5350 MHz and 5470 - 5725 MHz shall comply with the e.i.r.p. limit; and
- (iii) The maximum antenna gain permitted for devices in the band 5725 - 5825 MHz shall comply with the e.i.r.p. limits specified for point-to-point and non point-to-point operation as appropriate.

Use Restriction Attention in European Union, operation is limited to indoor use within the band 5150-5350 MHz.

Correct disposal of this product (Waste Electrical & Electronic Equipment)

This symbol means the product must not be discarded as household waste, and should be delivered to an appropriate collection facility for recycling. Proper disposal and recycling helps protect natural resources, human health and the environment. For more information on disposal and recycling of this product, contact your local municipality, disposal service, or the shop where you bought this product.



This product is RoHS compliant.

This product is in compliance with Directive 2011/65/EU and UK The Restriction of the Use of Certain Hazardous Substances in Electrical and Electronic Equipment Regulations 2012, and its amendments, on the restriction of the use of certain hazardous substances in electrical and electronic equipment.

REACH

REACH (Regulation No 1907/2006) addresses the production and use of chemical substances and their potential impacts on human health and the environment. Article 33(1) of REACH Regulation requires suppliers to inform the recipients if an article contains more than 0.1 % (per weight per article) of any substance(s) on the Substances of Very High Concern (SVHC) Candidate List ("REACH

candidate list"). This product contains the substance "lead"(CAS-No. 7439-92-1) in a concentration of more than 0.1% per weight.

At the time of release of this product, except for the lead substance, no other substances of REACH candidate list are contained in a concentration of more than 0.1% per weight in this product.

Note: On June 27, 2018, lead was added to the REACH candidate list. The inclusion of lead in the REACH candidate list does not mean that lead-containing materials pose an immediate risk or results in a restriction of permissibility of its use.

For devices with headphone jacks

WARNINGS/CAUTIONS



Do NOT use the headphones at a high volume for any extended period.

- To avoid hearing damage, use your headphones at a comfortable, moderate volume level.
- Turn the volume down on your device before placing the headphones on your ears, then turn the volume up gradually until you reach a comfortable listening level.

For Products That Include Batteries

Instructions for Users on Removal, Recycling and Disposal of Used Batteries

To remove the batteries from your equipment or remote control, reverse the procedure described in the owner's manual for inserting batteries. For products with a built-in battery that lasts for the lifetime of the product, removal may not be possible for the user. In this case, recycling or recovery centers handle the dismantling of the product and the removal of the battery. If, for any reason, it becomes necessary to replace such a battery, this procedure must be performed by authorized service centers. In the European Union and other locations, it is illegal to dispose of any battery with household trash. All batteries must be disposed of in an environmentally sound manner. Contact your local waste-management officials for information regarding the environmentally sound collection, recycling and disposal of used batteries.

WARNING: Danger of explosion if battery is incorrectly replaced. To reduce risk of fire, explosion or leakage of flammable liquid/gas, don't disassemble, crush, puncture, short external contacts, expose to temperature above 60°C (140°F), sunshine or like, expose to extremely low air pressure or dispose of in fire or water. Replace only with specified batteries. The symbol indicating 'separate collection' for all batteries and accumulators shall be the crossed-out wheeled bin shown below:



WARNING - For Products That Contain Coin/Button Cell Batteries

DO NOT INGEST BATTERY, CHEMICAL BURN HAZARD. This product contains a coin/button cell battery. If the coin/button cell battery is swallowed, it can cause severe internal burns in just 2 hours and can lead to death. Keep new and used batteries away from children. If the battery compartment does not close securely, stop using the product and keep it away from children. If you think batteries might have been swallowed or placed inside any part of the body, seek immediate medical attention.

For All Products with Wireless Operation:

HARMAN International hereby declares that this equipment is in compliance with the essential requirements and other relevant provisions of Directive 2014/53/EU and UK Radio Equipment Regulations 2017. The declaration of conformity may be consulted in the support section of our Web site, accessible from www.jbl.com/specialtyaudio.

HARMAN International Industries, Incorporated. All rights reserved. JBL is a trademark of HARMAN International Industries, Incorporated, registered in the United States and/or other countries. Features, specifications and appearance are subject to change without notice.



www.jbl.com/specialtyaudio



Harman International Industries, Incorporated
8500 Balboa Blvd, Northridge, CA 91329, United States

European Representative:

Harman International Industries, Incorporated
EMEA Liaison Office, Danzigerkade 16, 1013 AP Amsterdam,
The Netherlands

UK Business Address:

Ground Floor, Westside 2, London Road, Apsley, Hemel
Hempstead, Hertfordshire, HP3 9TD, United Kingdom

SSL2021-001



CLASS 1

CONSUMER LASER PRODUCT

Caution

This product uses a laser system. To prevent direct exposure to the laser beam, do not open the cabinet enclosure or defeat any of the safety mechanisms provided for your protection.

DO NOT STARE INTO THE LASER BEAM.

To ensure proper use of this product read the owners manual carefully and retain it for future use.

Should the unit require maintenance or repair, please contact your local JBL service centre or dealer.

FDA Information

This Device Complies with DHHS Radiation Rules, 21CFR Chapter 1, Subchapter J.

This product complies with IEC/EN 60825-1:2014; EN 50689:2021.

HARMAN International Industries, Incorporated. All rights reserved.
JBL is a trademark of HARMAN International Industries, Incorporated, registered in the United States and/or other countries. Features, specifications and appearance are subject to change without notice.

www.jbl.com/specialtyaudio