

Recommended bulb

2 x 3-4 Watt SES energy efficient LED Candle

or

2 x 28 Watt SES eco halogen Candle

Bulb not included

Specification

Max power: 28W


Voltage: 220~240V, 50/60Hz

IP20

Weight 0.5Kg



Please retain these instructions for future reference.

This symbol  indicates that this product should not be treated as normal house-hold waste and it should be recycled. John Lewis does not operate in store take back, but as members of the Distributer Take Back scheme have funded the development and upgrade of recycling facilities across the UK. Please take it to your nearest collection facility or for further details contact your local council or visit www.recycle-more.co.uk.

We have taken great care to ensure that this product reaches you in perfect condition. However, should any parts be damaged or missing please e-mail lightingparts@JLPspares.co.uk

Trouble shooting:

Why is the light not working when switched on?

Check your power supply is switched on

Turn off light and check that the bulb is inserted correctly

Check the bulb is still in working order.

John Lewis partnership

171 Victoria Street

London SW1E 5NN

Johnlewis.com

Made in China

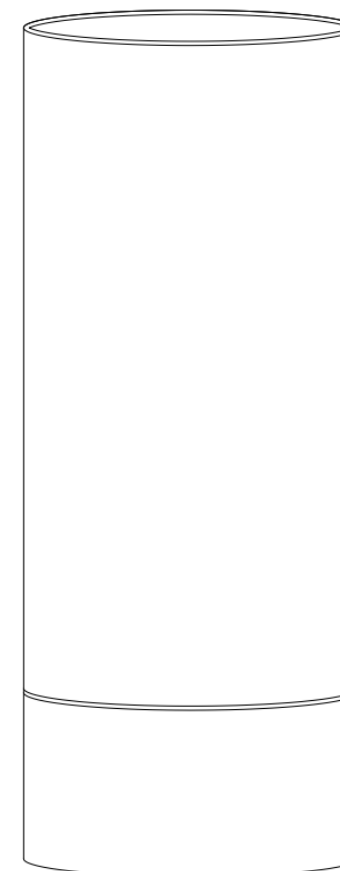
Issue 1 04/18

John Lewis

User manual

Cara cylinder

Touch lamps



Thank you for purchasing these Cara touch table lamps. Please read the instructions carefully before use to ensure safe and satisfactory operations of this product.
Please keep this instruction for future reference.

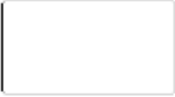

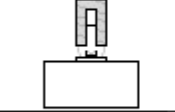

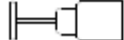
Warnings!

The supply cable runs through the inside of this product. Take care not to place undue stress on the cable whilst unpacking to prevent the possibility of a poor connection.
If you are in any doubt consult a person competent to give advice on the assembly of electrical equipment.
If the external flexible cable of the lamp is damaged it shall be exclusively replaced by the manufacturer or his service agent or a similar qualified person in order to avoid a hazard.
To prevent electrocution switch off at the mains supply before assembling or maintaining this fitting. Ensure the plug is not connected to any power supply and read instructions before assembly.
Always be sure to use the correct type and wattage of bulbs as indicated on the fitting. **Never exceed the wattage stated.**
When changing the bulb, always switch off at the mains and allow the old bulb to cool down before handling. Dispose of used bulbs carefully.
Caution! The bulb and surrounding parts can become hot during use.
For indoor use only.

Care instructions

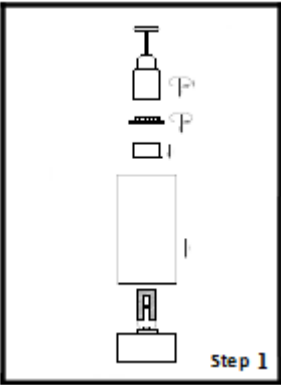
We recommend cleaning with a soft dry cloth. Do not use abrasive materials as these will damage the finish.
Replace bulbs from John Lewis or established brand of the same type and compatibility.

Parts list

	Parts list	Qty		Parts list	Qty
A		1	D		1
B		1	E		1
C		1	F		

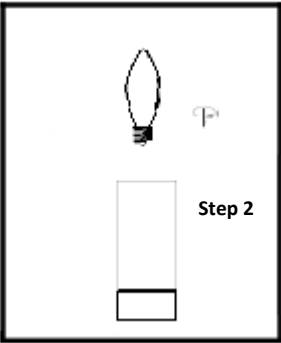
Assembly

Never install your appliance on a wet, freshly painted surface. Ensure to off at the mains supply before assembling or maintaining this fitting.



Step 1

Unpack the product and remove all packaging. Be careful not to scratch the surface of the product whilst removing the wrapping.
Remove the shade ring already attached to the lamp holder section. Carefully place the shade glass followed by the spacer (widest end first) over the lamp holder. Secure the assembly in place by refitting the shade ring removed earlier. The shade ring tool is supplied to make refitting the shade ring easier. Simply place the shade ring inside the plastic shade tool and attach to the lamp holder section. Take care not to overtighten as this may cause damage to the fitting. Ensure all components are straight and aligned during this assembly process.



Step 2

Fit the bulb, type and wattage as indicated on the fitting (bulb not supplied). The wattage indicated must not be exceeded.
Table lamp is now ready for use.