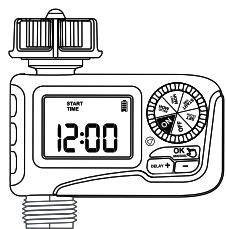
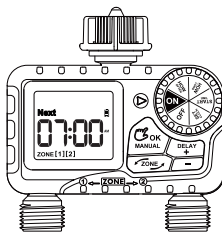


Quick Start Guide



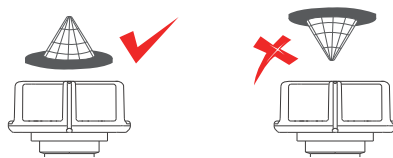
- Model: ITV105 -



- Model: ITV205 -

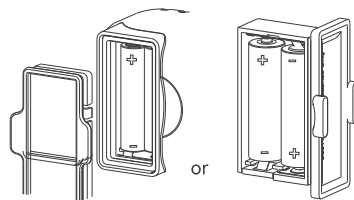
1 Check the water inlet filter

The filter prevents impurities from entering and blocking the valve, and its peripheral rubber ring seals the connection to avoid leaks. Please install the water inlet filter correctly as shown below.



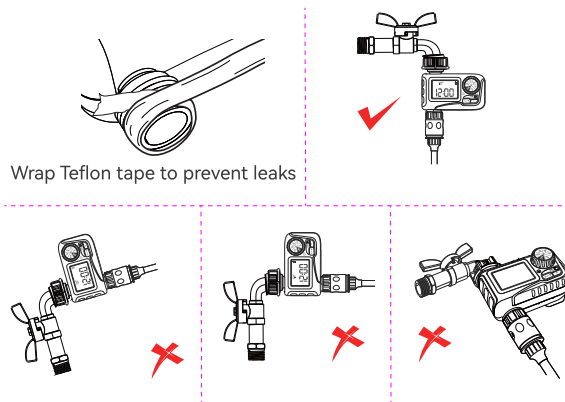
2 Insert the batteries correctly

Requires 2 new 1.5V AAA alkaline batteries. Insert them into the battery compartment as directed. Tightly close the battery compartment to ensure waterproofing.

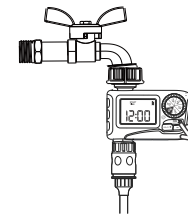


3 Install the timer on the faucet

Wrap Teflon tape around the threads of the faucet or hose to ensure no water leaks. Keep the faucet off and install the timer on it (hand tight only). Ensure the water inlet is higher than all water outlets. The display should be as vertical as possible to the ground to prevent rainwater infiltration.



4 Activate the timer valve before use



Keep the faucet off and turn the dial to "ON". Press and hold the "MANUAL" button to enter manual watering mode. When the display flashes, immediately press the "OK" button to open the valve. After hearing a "click" or 5 seconds, turn the dial to "OFF" to close the valve. Repeat the above operation 3~5 times. If the timer has 2 zone outlets, repeat the above for each outlet separately (press the "ZONE" button to switch zones).
***See the user manual for details.**

5 Check for water leaks before use

Keep away from the timer water outlet to avoid splashing water, and turn on the faucet gently.

Check: ① Check whether the water inlet is leaking.
② Repeat step 4 to check whether water flows out or closes when the valve is opened or closed.

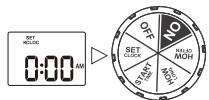
6 Congratulations!

You have completed the installation of the timer. Now please see the user manual to **start programming your watering schedule.**

7 5 steps to quickly program your watering plan

*ITV205 has two zones, please follow the steps below to set ZONE 1 and then set ZONE 2(use "ZONE" button to switch zone).
*See the user manual for more details and functions.

STEP 1: SET CLOCK



1. Turn the timer dial to "SET CLOCK"
2. Press the "+" or "-" to set the current exact time
3. Use the "OK" button to switch Hours or Minutes
4. Turn the dial clockwise to save the changes in this STEP and go to next STEP

ITV105 and ITV205 selectable in 12H or 24H

STEP 2: START TIME



1. Turn dial to "START TIME"
2. Press the "+" and "-" buttons to set the time you want to start watering
3. Use the "OK" button to switch Hours or Minutes
4. Turn the dial clockwise to save the changes in this STEP and go to next STEP

STEP 3: HOW LONG



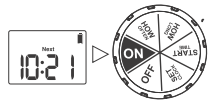
1. Turn dial to "HOW LONG"
2. Press the "+" and "-" buttons to select watering duration
3. Use the "OK" button to switch Hours or Minutes
4. Turn the dial clockwise to save the changes in this STEP and go to next STEP

STEP 4: HOW OFTEN



1. Turn the dial to "HOW OFTEN"
2. Press "+" and "-" buttons to set your watering frequency
3. Turn the dial clockwise to save the changes in this STEP and go to next STEP

STEP 5: AUTOMATIC WATERING



After complete step 1 to step 4, turn dial to "ON". It will start watering automatically based on the programmed.

Now you can keep the faucet turned on and trust the timer to do the watering !

8 Troubleshooting

| Problem | Possible Cause | Possible Solution |
|--------------------------------|---|---|
| The water inlet leakage | <ol style="list-style-type: none"> 1. No filter or not be placed horizontally 2. The faucet is not the standard 3/4" | <ol style="list-style-type: none"> 1. Add a filter and make sure it's placed horizontally in the inlet. 2. Make sure the faucet is a standard 3/4" faucet. 3. Wrap Teflon tape on the tap making it tight. |
| The water won't stop /flow out | <ol style="list-style-type: none"> 1. Long time in storage and transportation make the valve inactive 2. Valve blockage | <ol style="list-style-type: none"> 1. Keep the tap turned off and turn the timer dial to ON; 2. Run the manual watering for 5-7s and stop it 3. Repeat the Step 2 for 3 to 5 times; 4. Try using it normally. |
| Low water pressure | <ol style="list-style-type: none"> 1. Filter blockage 2. Inlet pressure not sufficient to support watering needs | <ol style="list-style-type: none"> 1. Check if the filter is clogged, if so, clean or replace the filter. 2. Make sure the timer is installed properly and not cross-threaded. 3. Installation of a booster pump or other auxiliary equipment of increasing pressure |

Warranty

Rainpoint provides a 1-year limited warranty on this product against manufacturing defects in materials and workmanship. If you contact us to register and activate the warranty, you can get a longer warranty period.

Need help?

✉ **Email:** service@rainpointus.com
 📞 **WhatsApp:** +1 626-780-5952
 📞 **US Free Hotline(English):**
 +1 833-381-5659
 (MON-FRI 9:30 AM-5:30 PM PST)
EU Free Hotline(English Deutsch):
 +44 800-808-5337
 (MON-FRI 9:00 AM-5:00 PM CET)



Welcome to join us!

Here are some gardening tips and tricks, as well as a lot of inspiration to help us become better gardeners.

@Rainpointglobal
 @Rainpointglobal
 @Rainpointglobal
 @RainPoint
 @Rainpointglobal
 @Rainpointglobal



More Than Water Saving