

X-BULL

Remote Control Instruction Manual

The name of the product: remote control

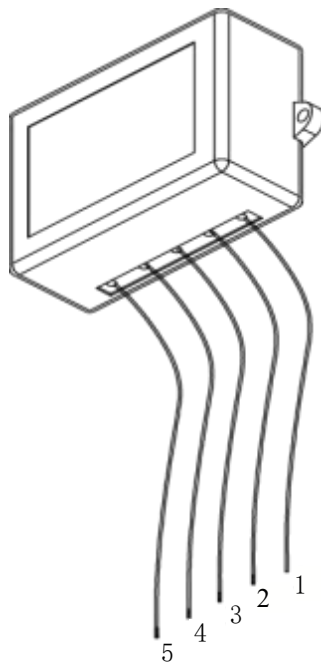
Product model: EWR002

The remote control produced by our company is suitable for electric winches of 2000 lbs and above, and can replace the handle to control the winches. press the IN button of the remote control to retract the rope, release the button to stop the winch; press the OUT button of the remote control to release the rope, release the button to stop the winch

Installation of the remote control receiver

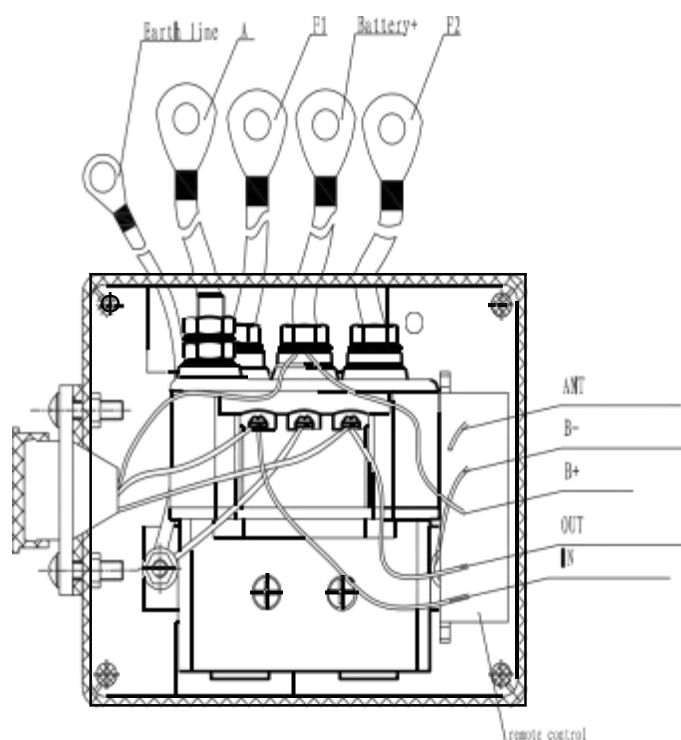
Remote control receiver outlet definition (as shown in Figure 1):

- No. 1: output line (white) OUT
- No. 2: output line (yellow) IN
- No. 3: power cord (red) B+
- No. 4: Ground wire (black) B—
- No. 5: Remote control antenna

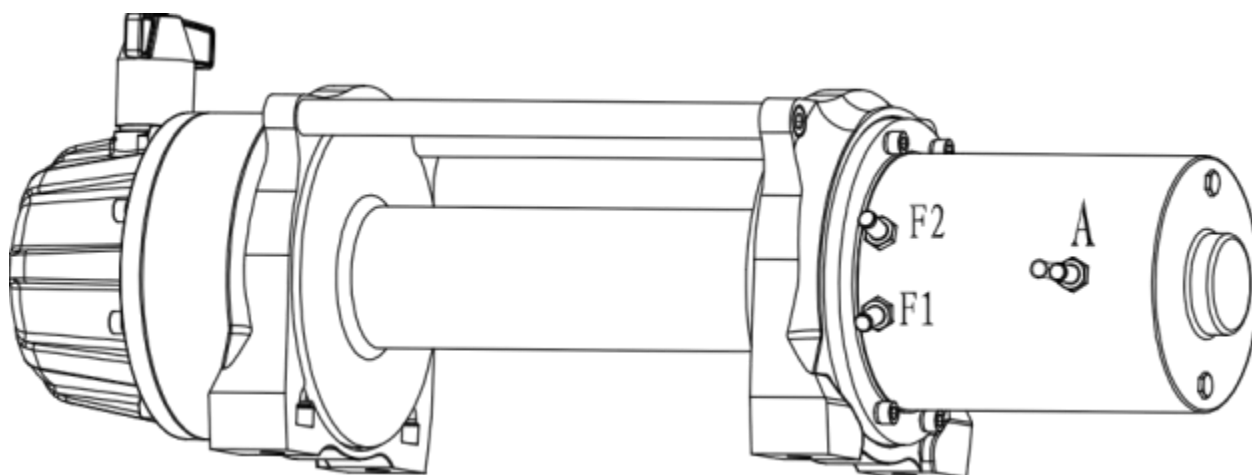


(1)

Remote control receiver installation method:



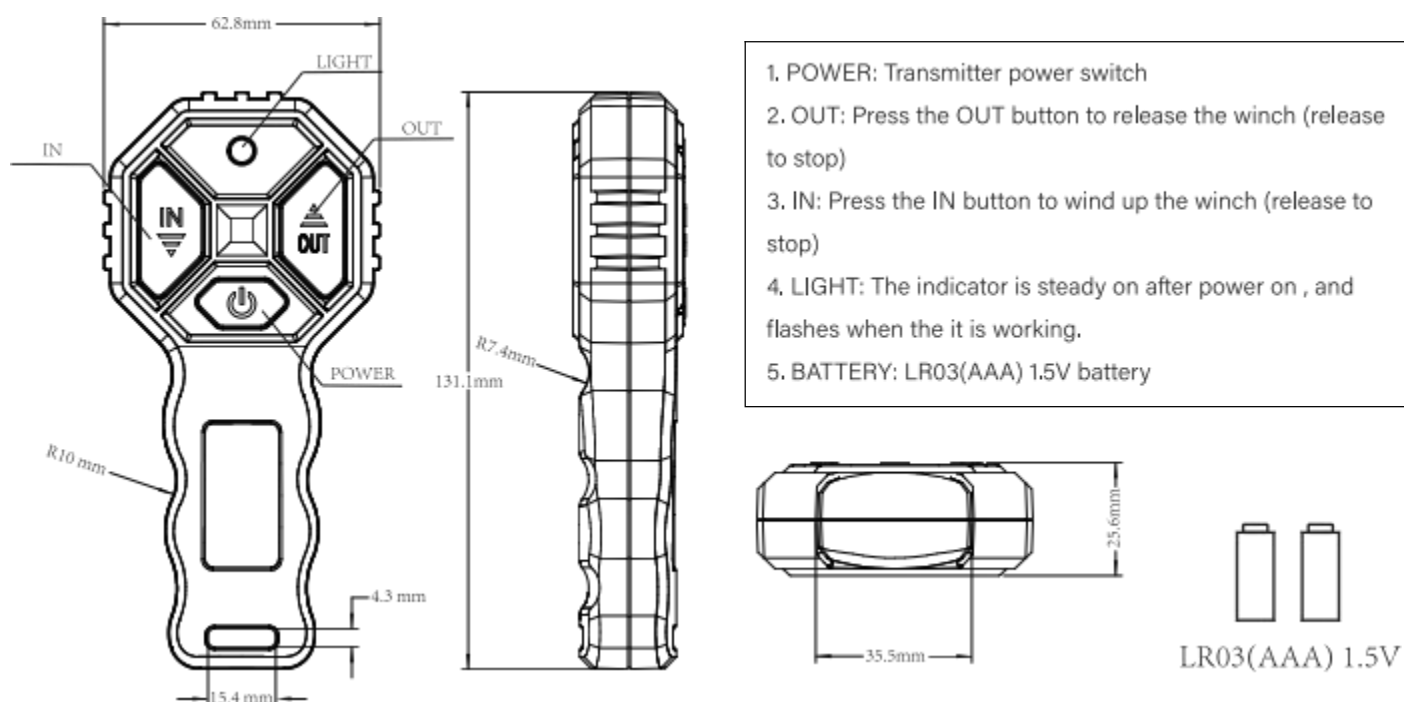
(2)



(3)

After the remote control and the main unit of the electric control box are assembled The connection between the electric control box and the winch: Connect to the outlet of the electric control box according to the F1, F2, and A positions corresponding to the winch motor in the picture above.

Introduction to the functions of the remote control transmitter (as shown in Figure 4)



Remote control performance parameters:

Model	AM
Frequency	315MHz/433,92MHz
Number of encoding groups	Ten billion sets of codes (globally unique codes)
Operation delay	50ms
Receiving distance	>30m (line of sight)
Operating Voltage	12V-24V
Operating temperature	-30 °C ~85 °C
Operating Environment	Relative humidity: ≤95% Altitude: ≤2000M

FCC Regulatory Compliance:

This device complies with Part 15 of the FCC Rules. Operation is subject to the following two conditions: (1) this device may not cause harmful interference, and (2) this device must accept any interference received, including interference that may cause undesired operation.

changes or modifications not expressly approved by the party responsible for compliance could void the user's authority to operate the equipment.

Note: This equipment has been tested and found to comply with the limits for a Class B digital device, pursuant to Part 15 of the FCC Rules. These limits are designed to provide reasonable protection against harmful interference in a residential installation. This equipment generates, uses and can radiate radio frequency energy and, if not installed and used in accordance with the instructions, may cause harmful interference to radio communications. However, there is no guarantee that interference will not occur in a particular installation.

If this equipment does cause harmful interference to radio or television reception, which can be determined by turning the equipment off and on, the user is encouraged to try to correct the interference by one or more of the following measures:

- Reorient or relocate the receiving antenna.
- Increase the separation between the equipment and receiver.
- Connect the equipment into an outlet on a circuit different from that to which the receiver is connected.
- Consult the dealer or an experienced radio/TV technician for help.

FCC Radiation Exposure statement

This equipment complies with FCC radiation exposure limits set forth for an uncontrolled environment. This transmitter must not be co-located or operating in conjunction with any other antenna or transmitter.

Safety and precautions in use of remote control

1. The power supply of the remote control is DC12V/DC24V universal, please choose the power supply reasonably when using it.
2. The remote control should be turned off when the winch is installed and adjusted, especially when arranging the wire rope.
3. Make sure to press or release the buttons of the remote control reliably during operation.
4. The control handle (signal transmitter) of the remote control and the receiver are paired for use
5. A small battery (3A) is used in the control handle of the remote control. Long-term use or storage for too long will reduce the power of the battery and affect the working distance of the remote control. In severe cases, the remote control will not work. Replace the battery. If the remote control is not used for a long time, the battery should be removed. It is recommended to replace the battery of the remote control regularly.

Note:

The winch remote control is a wireless product. When using it, the receiver antenna should be kept away from interference sources such as metal, so as to improve the operating distance of the remote control.

