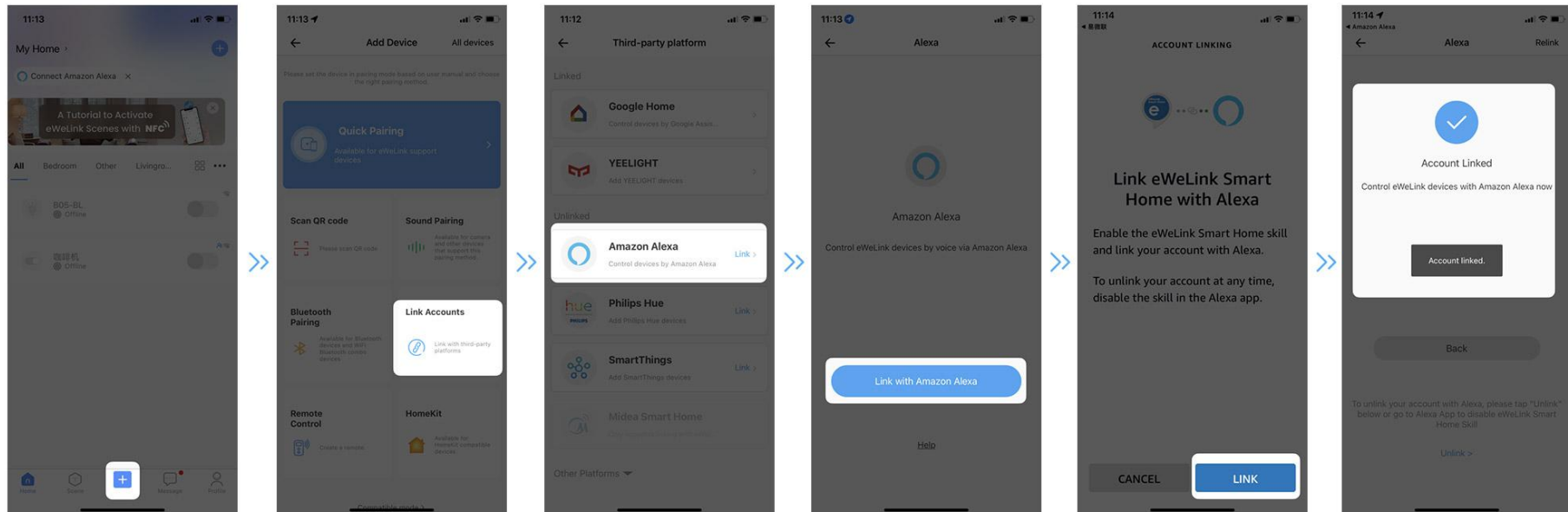


# How to connect with Alexa by "eWeLink Smart Home"



1. log in Amazon Alexa and add Alexa Echo.
2. log in to your eWeLink account.
3. Tap the "+" at the bottom of home page and select "Link Accounts" on the next page.
4. Tap "Amazon Alexa" in the third-party platforms, then select "Link with Amazon Alexa"
5. Review the Notices section, then tap "Link" to proceed.
6. when 'eWeLink Smart Home' is linked, Alexa App will prompt you whether to discover devices, tap "Discover Devices";
7. After discovering devices, select "SET UP DEVICE" to group or rename devices