

# **D**IESEL HOSE REEL

Model: HRD3410



## User Manual



# Table of Contents

<b>Introduction.....</b>	<b>1</b>
<b>Important Safety Tips.....</b>	<b>3</b>
<b>Technical Specifications.....</b>	<b>4</b>
<b>Machine Parts List.....</b>	<b>5</b>
<b>Fueling Nuzzle.....</b>	<b>6</b>
<b>Operation Procedure.....</b>	<b>8</b>
<b>Maintenance.....</b>	<b>10</b>
<b>Troubleshooting.....</b>	<b>10</b>
<b>Customer Service.....</b>	<b>11</b>





## Introduction

### Congratulations on Your Purchase of the Diesel Hose Reel

The automatic diesel hose reel has been designed specifically to work with diesel pumping systems such as vehicle refueling applications. Popular with bundled fuel tank manufacturers for mounting directly onto the storage tank, this retractable diesel fuel hose reel can be supplied complete with a range of hose lengths.

The retractable fuel hose reels incorporate powder-coated finish heavy-duty steel construction with spring rewind that they automatically retract. Working pressure the hose is 300 psi. Four-direction non-slag rollers reduce hose wear and abrasion. They are primarily used where the tank is situated away from the dispensing point, to ensure dispense of the diesel, kerosene, oil or fuel is complete.

#### Basic parameters:

Model	Dimension	Max Pressure	Application	Hose Capacity	
				I.D (inch)	Hose Length(ft)
HRF3410	40"W*50"H	300 PSI	diesel,kerosene,oil,fuel	1	50
HRF3410	25"W*50"H	300 PSI	diesel,kerosene,oil,fuel	3/4	50



Automatic hose reels for diesel have been designed to ensure high efficiency. The sturdy structure can guarantee best performance also in heavy duty conditions.

### Features:

- Reduced pressure loss
- Easy and versatile installation through the rotating support plate and the adjustable arm Positions
- Hose stop
- Available with heavy duty steel hub
- Spring-driven retractable hose
- The hose can be locked at the desired length
- Ratchet prevents lockup when hose is completely extended



**Improve efficiency**  
Hoses, cable and cords are where you want/need them.



**Increase safety**  
Reduce tripping accidents and lost work time.



**Minimize leakages**  
Reduce costs of air and water leakages.



**Reduce hose wear**  
Hose and cord on reels can last up to five times longer.



**Increase productivity**  
No more tangled hoses improves efficiency.

### Specification:





- Spring driven double arm hose reel
- Designed to transfer Diesel, Petrol, Kerosene
- Heavy duty construction for long life in industrial and automotive applications
- High quality impact resistant steel drum
- Max Working pressure: 20 bar
- All fittings (fluid pass) is CuZn40Pb2(brass)
- Wall, ceiling or floor mounted
- NPT BSP 3/4", 1" Inlet/Outlet



# Important Safety Tips

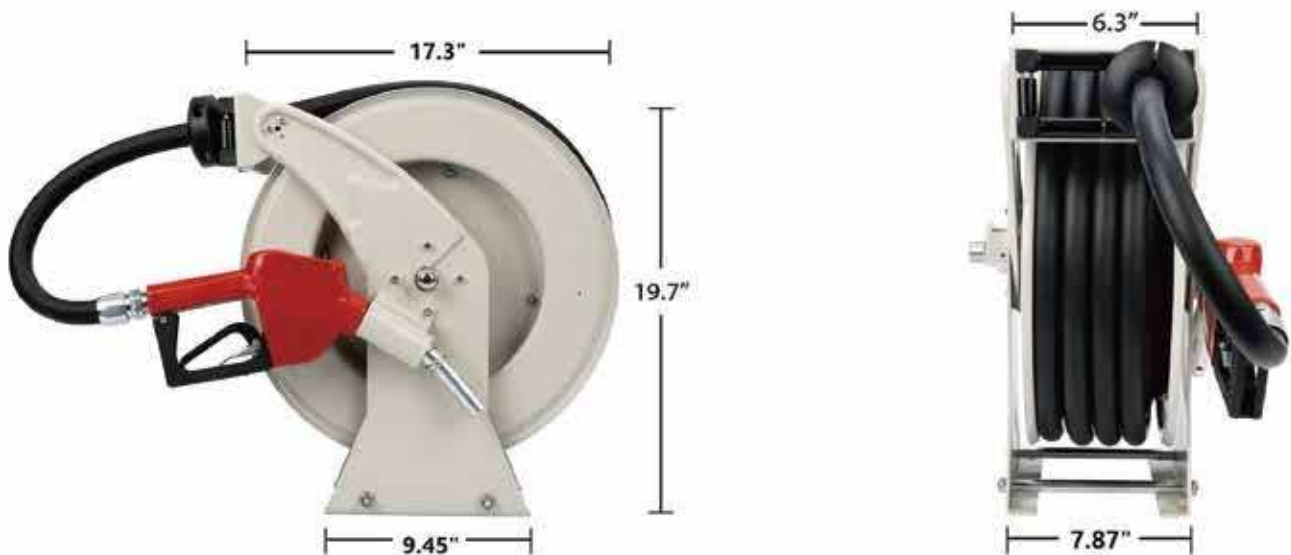


**Please read and understand the safety tips carefully before using this equipment**

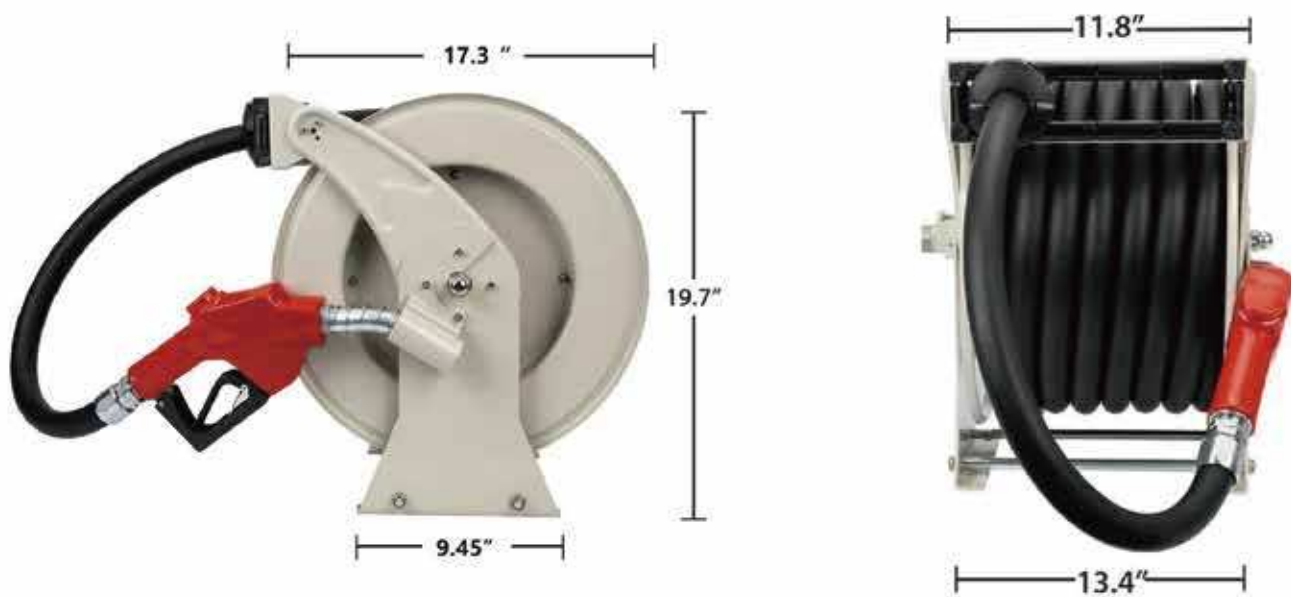
Safety Tips	
	<p><b>FIRE AND EXPLOSION</b></p> <p>When flammable fluids are present in the work area, such as gasoline, be aware that flammable fumes can ignite or explode. To help prevent fire and explosion:</p> <ul style="list-style-type: none"> <li>• Use equipment only in a well-ventilated area.</li> <li>• Eliminate all ignition sources, such as cigarettes and portable electric lamps.</li> <li>• Keep a working fire extinguisher in the work area.</li> </ul>
 	<p><b>SKIN TOUCH</b></p> <p>The fluid from dispensing device, hose leaks, or ruptured components will be harmful to the skin. Clean with water immediately.</p> <ul style="list-style-type: none"> <li>• Do not point the dispensing device at anyone or at any part of the body.</li> <li>• Do not put your hand over the fluid outlet.</li> <li>• Do not stop or deflect leaks with your hand, body, glove, or rag.</li> <li>• Tighten all fluid connections before operating the equipment.</li> <li>• Check hoses and couplings daily. Replace worn or damaged parts immediately.</li> </ul>
	<p><b>EQUIPMENT MISUSE</b></p> <p>Misuse can cause serious injury.</p> <ul style="list-style-type: none"> <li>• Pull the hose from the reel by grasping the hose itself, not the control valve.</li> <li>• Use fluids and solvents that are compatible with equipment wetted parts.</li> <li>• Route hoses and cables away from traffic areas, sharp edges, moving parts, and hot surfaces.</li> <li>• Do not kink or over bend hoses or use hoses to pull equipment.</li> <li>• Keep children and animals away from the work area.</li> </ul>

# Technical Specifications

## 3/4" x 50' Diesel Fuel Hose Reel



## 1" x 50' Diesel Fuel Hose



# Machine Parts List

Inlet Connector

Swivel Joint

Fuel Hose

Spring

Rollers Support

Hose Stopper

Adjustable Guide Arm

Steel Disc

Base Plate

Fueling Gun



Fueling Gun



Extended Inlet Connector



NPT Swivel Joint

# Fueling Nozzle

- **Material:** Aluminum Alloy
- **Out Fuel Tubing:** Aluminium Alloy & Stainless Steel
- **Import/Outlet Diameter:** 3/4 Inch
- **Thread:** NPT Thread
- **Weight:** 2.6Lb (1.16KG)
- **Flow Range:** 0-60(L/Min)



**3/4" NPT Automatic Fueling Nozzle**

- **Material:** Aluminum Alloy
- **Out Fuel Tubing:** Aluminium Alloy & Stainless Steel
- **Import/Outlet Diameter:** 1 Inch
- **Thread:** NPT Thread
- **Weight:** 3.3Lb (1.5KG)
- **Flow Range:** 0-120(L/Min)



**1" NPT Automatic Fueling Nozzle**





### **Easy Use**

Ergonomic design, The nozzle doesn't need to exert pressure for a long time, it makes the hands more relaxed.



### **Adjustable**

The nozzle has three gears, which are divided into high, middle, and low gears. It can control different flow rates. The nozzle doesn't need to exert pressure for a long time, it makes the hands more relaxed.



### **Durable**

The nozzle body is thickened and the internal thread interface is sturdy and durable.



### **Self-sealing Design Fuel Nozzle**

Adopted induction gun head design inside, the gun will auto jump when the oil is full to prevent spillage.

# Operation Procedure

Inspect the hose reel fittings, alignment, hoses, and components periodically and tighten all fluid connections before use.

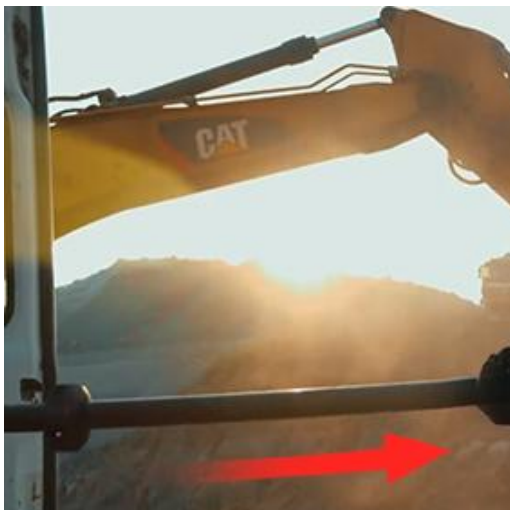


## < Step 1

Connect the fuel gun

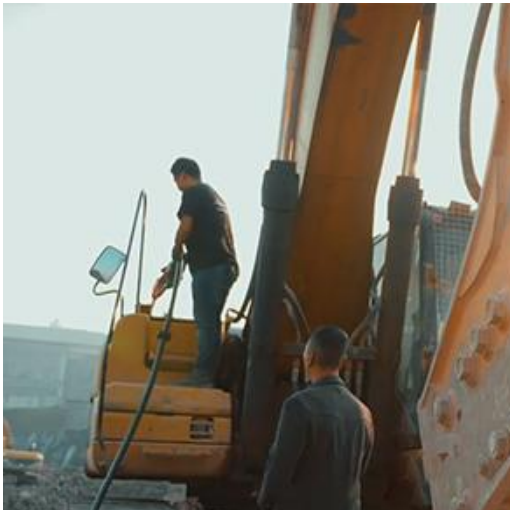
## Step 2 >

Connect mobile oil source units with NPT connector or extended fuel inlet connector



## < Step 3

Slowly pulling out the hose and to the length you need.

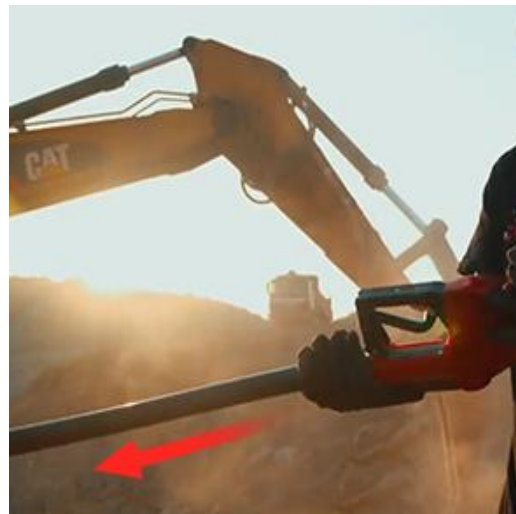


#### < Step 4

To refuel the equipment that needs to be refueled

#### Step 5 >

To retract the reel after fueling, holding the hose, slowly pull out a little, and then slowly put it back



#### < Step 6

Let it retract in a controlled way until the stop/block rests against the hose guide/rollers.

**NOTE:** To avoid damage to the reel, always hold on to the hose while it is rewinding.

# Maintenance

Maintain your reel. Do not force the hose reel. Products are safer and do a better job when used in the manner for which they are designed. Plan your work, and use the correct product for the job.

- If the rewind spring fails, for safety reasons, it is strongly recommended the replacement of the spring canister should be performed by an authorized service technician. The spring can be under high tension and accidental release can cause severe personal injury.
- Check for damaged parts before each use. Carefully check that the product will operate properly and perform its intended function. Replace damaged or worn parts immediately. Never operate the product with a damaged part.
- Wet work areas can cause damage to the reel, recommended that the reel be placed indoors when not in use to avoid getting wet from the rain.

# Troubleshooting

Before calling service team for support, please check the following troubleshooting tips:

Stoppage	Cause	Solution
HOSE WILL NOT FULLY RETRACT	a) Outlet nozzle, gun, or tool is too heavy. b) Spring is fatigued. c) Field-installed hose is too long.	Hold on to the hose while it is rewinding
HOSE WILL NOT RETRACT AT ALL	Spring has lost all tension or has possibly broken.	a) Reinstall Spring Tension b) Replace Spring Canister.
REEL WILL NOT LATCH	a) Incorrect operation. b) Dog spring or locking cam is broken or worn.	a) Reel latches on first, second, third or fourth "click". it automatically rewinds. b) Replace dog spring or locking cam.
FLUID LEAKS FROM SWIVEL	Swivel seals are damaged or worn.	Replace swivel seals. Caution: Be sure the leak is not at Hose Fitting!
HOSE LOCKS UP WHEN FULLY	Hose clamp is in the incorrect position.	Relocate hose clamp to optional location.