



Technical Support and E-Warranty Certificate
www.vevor.com/support

PELLET GRILL SMOKER

APP USER MANUAL

MODEL: VA-575W

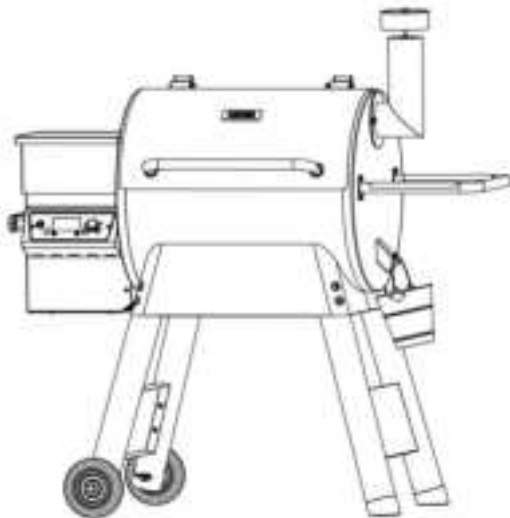
We continue to be committed to provide you tools with competitive price.
"Save Half", "Half Price" or any other similar expressions used by us only represents an estimate of savings you might benefit from buying certain tools with us compared to the major top brands and does not necessarily mean to cover all categories of tools offered by us. You are kindly reminded to verify carefully when you are placing an order with us if you are actually saving half in comparison with the top major brands.

VEVOR®

TOUGH TOOLS, HALF PRICE

PELLET GRILL SMOKER

MODEL:VA-575W



Note:The quantity of parts shown in the manual is the actual usage and the unused parts are spare parts.

NEED HELP? CONTACT US!

Have product questions? Need technical support? Please feel free to contact us:

Technical Support and E-Warranty Certificate
www.vevor.com/support

This is the original instruction, please read all manual instructions carefully before operating. VEVOR reserves a clear interpretation of our user manual. The appearance of the product shall be subject to the product you received. Please forgive us that we won't inform you again if there are any technology or software updates on our product.

1.HOW TO DOWNLOAD

1. Plug in the grill.
2. Briefly press the power button once to turn on the grill. Upon starting, the display will first show Program codes, and finally display the all the default display settings.
3. To set up WiFi, hold the "Control Knob" button for 3-5 seconds until the WiFi indicator starts flashing.
4. Open the **VEVOR APP** and follow the instructions to connect to the WiFi while the WiFi indicator is flashing.

TIPS:

1.You can download and install the APP by searching the name of App [**VEVOR**] in the [App Store] or [Google Play].

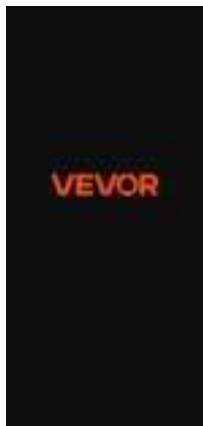
2.After downloading, please review the [User Agreement] and [Privacy Policy] carefully and acknowledge them.

If you can't search the device,Please turn on Bluetooth, location permissions and search for nearby devices,

If all permissions are allowed, restart the Bluetooth or control panel and place the phone close to the grill. Then restart the app to add the device again.

2.HOW TO REGISTER A NEW ACCOUNT

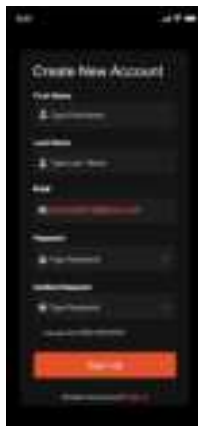
Start



Sign in



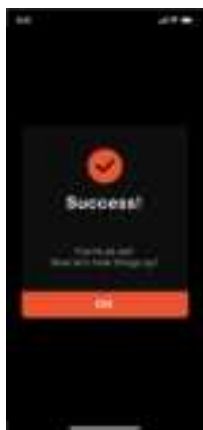
Sign Up



Enter Code



Success



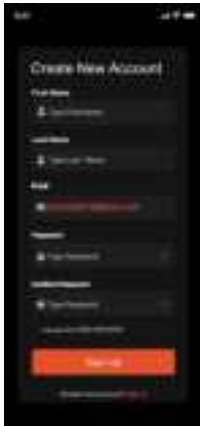
1. Open the APP on your mobile and enter the login page, then click [sign up].
2. Sign up with your E-mail ID.
 - a. Enter your E-mail ID and password, and then click [Create Account].
3. Enter verification code you received from your email.
4. If you have signed up an account successfully, you can log in your account automatically to use this APP.

3. HOW ABOUT FORGETTING PASSWORD

Reset Password



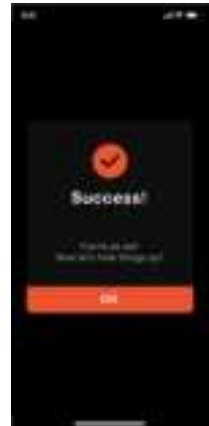
Sign Up



Enter Code

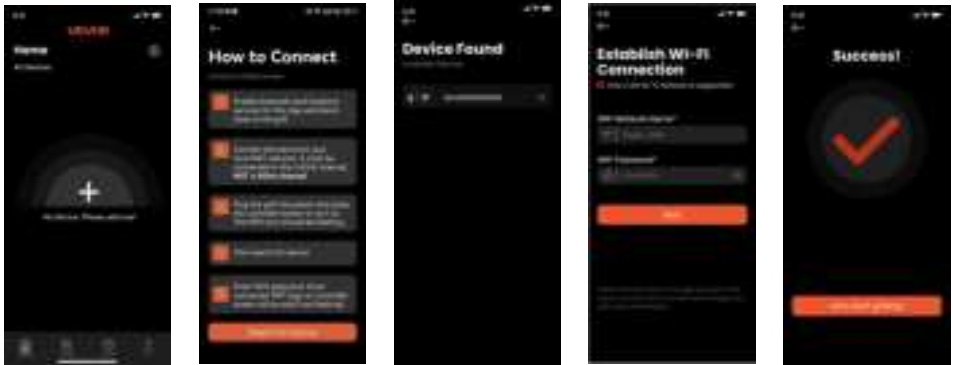


Success



- 1.You can click forget password . Then enter your email ID that first time you signed up.
- 2.You can follow the steps from your email to change password and log in with new password.

4. HOW TO ADD A WIFI ROUTER



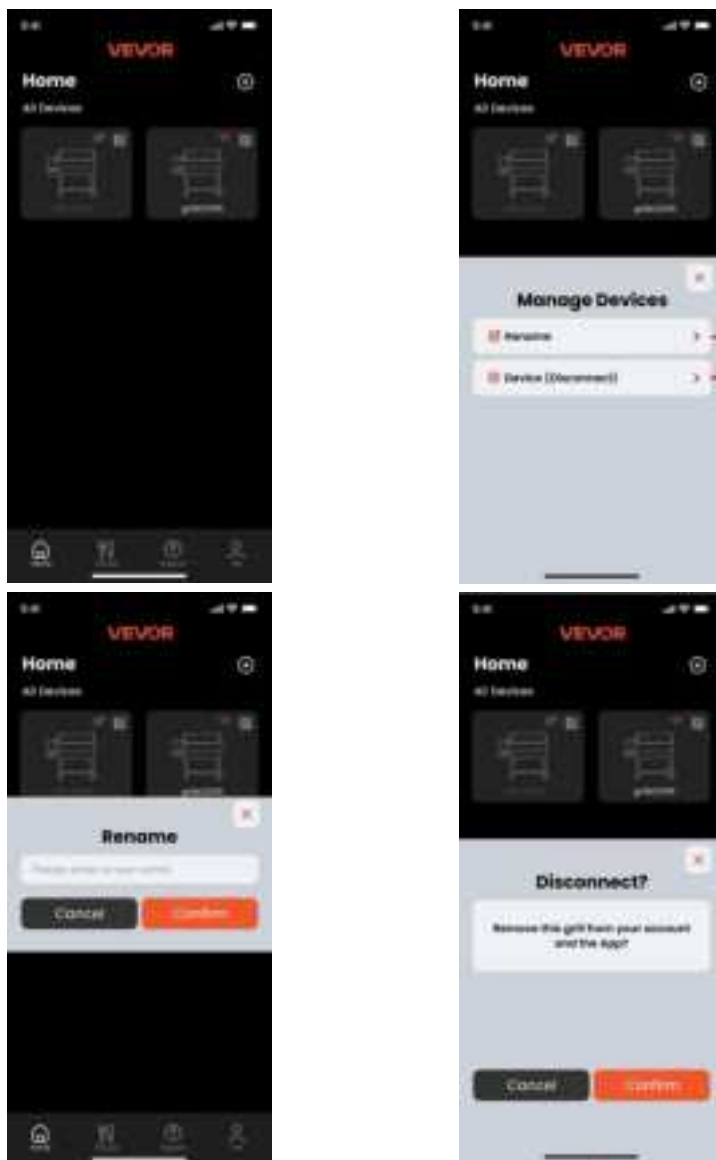
1. Keep the phone connected to WiFi and turn on Bluetooth.
2. Click [+Add Device] in the upper right corner of the homepage. Device will be automatically added by default.
3. The device enters the state of network distribution.
4. After the device is searched successfully, enter the corresponding WiFi password. Click [Next]
5. You can see the added device in the device list, and you can control the device by entering the control page.

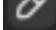
Note: When configuring the network, try to keep the mobile phone, device and router close to avoid failure of the network configuration. **APP only supports 2.4 network.**

You can set the wireless transmitting frequency through the management background of your wireless router; if the router you are using is a single-band router, you don't need to consider it; if the router you are using is a dual-band wireless router, you can enter the management background of the router to check whether the "dual-band" transmitting is enabled, or you can also enable only the "2.4G band".

You can determine whether the phone is connected to a 2.4G network or a 5G network by the WiFi name; If the initial WiFi name has been changed, you can check the WiFi frequency via phone settings - WLAN (Android only); if you are currently using a 5G network, you need to change the cellular WiFi to 2.4G WiFi before you can further connect and bind to the controller.

5. HOW TO RENAME AND DISCONNECT



1. You can click  on the right corner of connected device to Rename or Disconnect .

6. OPERATION BUTTONS



7. ERROR



VEVOR[®]

TOUGH TOOLS, HALF PRICE

Technical Support and E-Warranty Certificate
www.vevor.com/support