



PRODUCT FEATURES

- High quality 475 Lumen 6500k white SMD LEDs
- 2 x Side SMD LEDs for wide flood lighting
- 250 Lumen SMD LED for long distance spot beam
- Intelligent sensor mode for hands-free operation
- Memory function - remembers last mode used
- Super tough construction with rubberised coating
- IP65 dust & water resistant / IK07 shock resistant
- 60° Rotational head
- Adjustable non-slip silicone lined headband
- Green Flash-to-Solid Green charging indicator
- Fast 1A USB-C charging - 2.5 hours charge time
- 1m USB-C charging cable included

BATTERY - 3.7v 1500mAh Li-polymer Rechargeable Battery

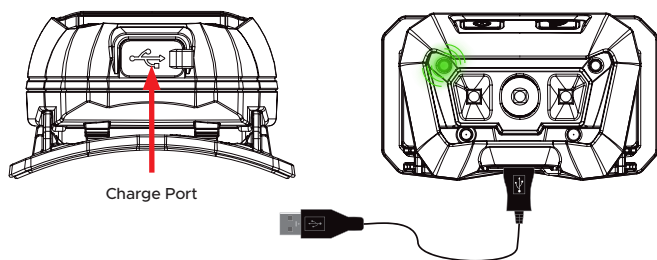
WEIGHT - 3.9oz

DIMENSIONS - Headtorch - H: 1.8 x W: 3 x D: 1.8in

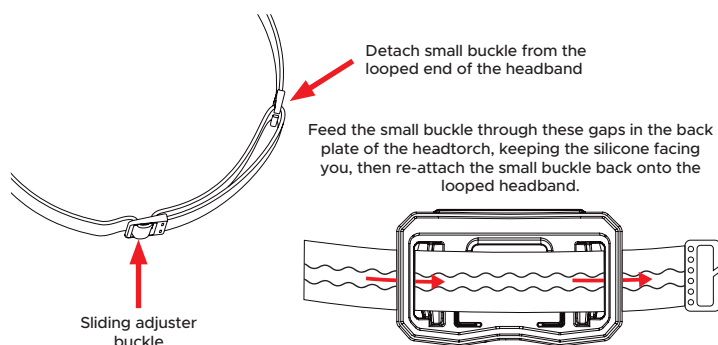
RECHARGING

1. Only use a USB-C 5V cable (max 1A).
2. Lift the charging port cover on the bottom of the headtorch and plug the USB-C end of the cable into the charge port.
3. Plug the USB-A end of the cable into a USB charging source (do not exceed 5V-1A charging input or damage may occur. Please do not use "Fast Chargers" as this can over-load the battery).
4. Green flashing LED indicates charging, solid green LED confirms fully charged.
5. Charge Time: 2.5 hrs

Warranty void if not used with the specified chargers







HEADBAND INSTALLATION



ANSI FL1 Standard



SPOT BEAM		250 Lumen	295ft	6H
FLOODLIGHT - HIGH		475 Lumen	82ft	4H
FLOODLIGHT - MEDIUM		250 Lumen	52ft	8H
FLOODLIGHT - LOW		30 Lumen	19ft	35H

OPERATING INSTRUCTIONS

RIGHT SWITCH = MAIN MODES

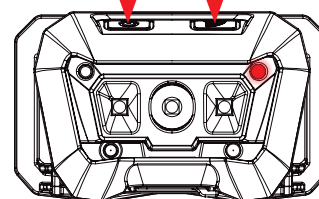
Switch sequence: Spot Beam > Flood light Low > Flood light Medium > Flood light High > Off

MEMORY FUNCTION: If left in any mode for over 5 seconds, the next press will turn off. Next time you turn ON, it will return to the last Mode used.

LEFT SWITCH = SENSOR MODE

Press the left switch to activate SENSOR mode, a red light will appear to confirm sensor mode is activated. Then wave your hand in front of the head lamp to turn it ON or OFF (sensing distance less than 10cm). Sensor mode available in FLOOD LIGHT HIGH and SPOT BEAM modes. The Memory Function will remember which mode was last used and the Sensor will turn on these LEDs in High mode. Press SENSOR switch again to turn SENSOR mode OFF.

On/Off Switch Sensor Switch



ADVICE & IMPORTANT INFORMATION!

- Do not look directly at LEDs.
- Do not operate in direct sunlight or extreme temperature conditions (below 14°F or above 104°F).
- LEDs can become warm/hot when switched on; DO NOT touch and NEVER place face down on any surface – risk of fire!
- Do not use the device if there is any visible damage.
- Do not use the device in the immediate vicinity of flammable materials or gases.
- Take care when charging, check the charging output on the charging source you are using and DO NOT exceed the stated Max charging input or damage may occur to the battery and may void the warranty.
- The rechargeable battery will reach full performance after a few complete charging and discharging cycles.
- To keep the rechargeable battery in optimum condition, it should be recharged every 3-6 months, especially if it is not being used for a long period of time.
- Always fully charge rechargeable batteries before storage.
- Always protect lithium batteries from heat, intense sunlight, fire, water and moisture – danger of explosion!
- If a battery is damaged, fluids can leak out. AVOID contact as this can lead to skin irritation and/or burns. If skin contact occurs, rinse thoroughly with water. If irritation persists, seek medical advice. Seek immediate medical assistance if lithium battery fluid comes into contact with the eyes.
- Children under 12 years of age should only use the product under adult supervision.
- Do not disassemble or attempt to modify the product; this will void the warranty and can be dangerous. Improper use or modification is not covered under the warranty.
- Take care not to let lenses come into contact with hard/sharp objects, damage/scratches to lenses will affect light output.
- Before cleaning the product, disconnect the charge cable. Clean with a dry or slightly moist, clean, lint-free cloth and a mild detergent if required. Do not use cleaners that contain abrasives or solvents.
- This product is water resistant to IPX5 – DO NOT SUBMERGE. If the product has been subjected to excessive moisture/water the warranty may be void.
- This product has a 1 year standard warranty (or extended to 2 years once registered online at WWW.UNILITE.CO.UK/WARRANTY) against manufacturing faults and defects. It does not cover normal wear and tear, modifications, accidental damage or poor maintenance. Unilite warranties do not cover disposable battery leaks or the use of incorrect chargers and cables that can damage rechargeable batteries.
- Do not dispose of this device in normal household waste. It must be disposed of via an authorised electrical appliance disposal centre or at your local waste disposal unit.
- Please re-use or recycle packaging responsibly.
- Keep these instructions for future reference or for subsequent possessors.