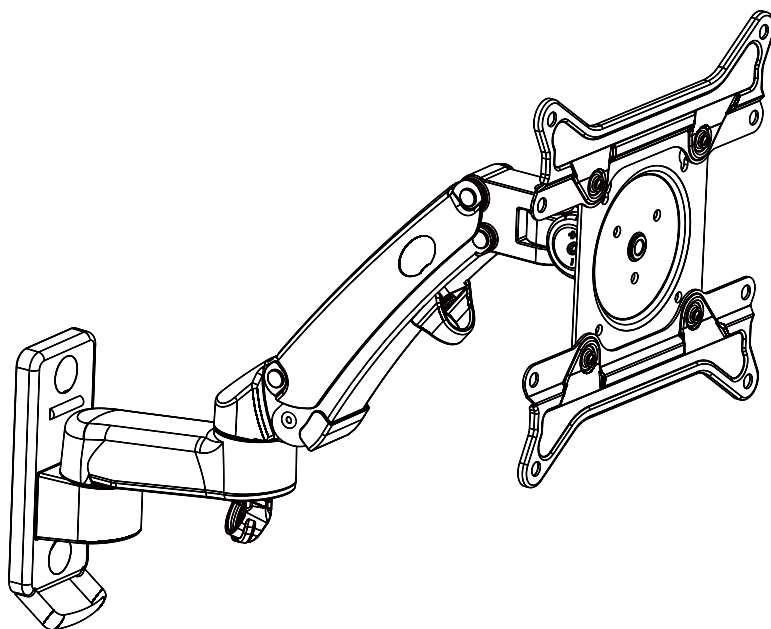


Wall Monitor Arm Instruction Manual

Rev03(A)



Model: HNWS4

Thank you for choosing this HUANUO product! At HUANUO, we strive to provide you with the best quality products and services in the industry. Should you have any issues, please don't hesitate to contact us.

Technical Support:

(US/CA) 1-800-556-0533 Mon-Fri 8am – 8pm(CST)

(UK) 44-808-196-3874 Mon-Fri 2pm – 10pm(UTC)

Other Info:

support@huanuo.com

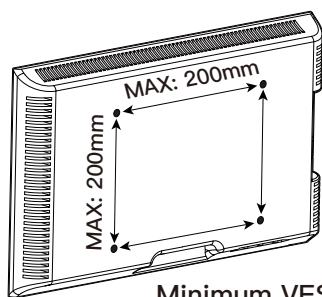
Website: www.huanuo.com

Important Safety Information

Please carefully read all manual before use the product. If you do not understand the manual or have any concerns or questions about the safety of the use, please contact customer service at support@huanuo.com.

- Check package contents against Supplied Parts and Hardware List to assure that all components were received undamaged. Do not use damaged or defective parts. If you require replacement parts, please contact our customer service at support@huanuo.com.
- Not all parts and hardware included will be used.
- This product is designed for use in wood stud, solid concrete, concrete block and brick walls. – DO NOT install into drywall alone.
- For safe installation, the wall you are mounting to must be capable of supporting minimum 3 times the weight of the total load (the mount, the monitor and all accessories weight). If not, the surface must be reinforced to meet this standard. The installer is responsible for verifying that the wall structure/surface will safely support the total load.
- Do not use this product for any purpose or in any configuration not explicitly specified in this instruction. We hereby disclaim any liability for injury or damage arising from incorrect assembly, incorrect mounting, or incorrect use of this product.
- This product contains a high pressure gas spring, fire and percussion prohibited. Also it is strictly prohibited to dismantle without professionals. Please return to the manufacturer or hand over to professional agencies if the product is abandoned.

Check the VESA Pattern of Your TV before You Begin the Installation



75 mm \approx 3"
100 mm \approx 4"
200 mm \approx 8"

Minimum VESA pattern: 75mm/3" (W) x 75mm/3" (H)

If your TV VESA is greater than 200 x 200mm/8 x 8" or less than VESA 75 x 75mm/3 x 3", this mount is NOT compatible.

If this mount is NOT compatible, please contact customer service at support@huanuo.com to find a compatible mount.

TENSION ADJUSTMENT SHOULD BE DONE ONLY AFTER MOUNT INSTALLATION



Do not adjust tension without monitor.

1. Ensure monitor has been attached to the mount.
2. Read your monitor box or manual to find out monitor net weight.
3. Ensure the net weight of monitor (including accessories) is between 6.6~26.4 lbs (3~12 kg).



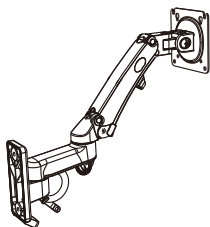
Clockwise to reduce
tension(carry less weight)

Counter-clockwise to increase
tension(carry more weight)

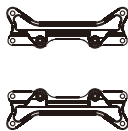
Warning!



Parts and Hardware List



Arm Assembly [01]



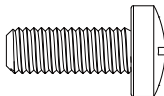
Monitor Bracket [02]



M4 x 12mm
Bolt A (x4)



M4 x 30mm
Bolt B (x4)



M6 x 15mm
Bolt C (x4)



M6 x 6mm
Bolt D (x4)



D6
Washer E (x4)



L13mm
Spacer F1 (x4)



L5mm
Spacer F2 (x4)



Sleeve G (x1)



M6 x 60mm
Lag Screw H (x2)



Wall Anchor I (x2)



M5
Allen Key J (x1)



Decorative Cover
K (x2)

Tools Needed (Not Included)



Stud Finder



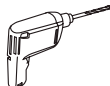
Level



Phillips Screwdriver



Pencil



Drill



5/32" (4mm)
Wood Drill Bit

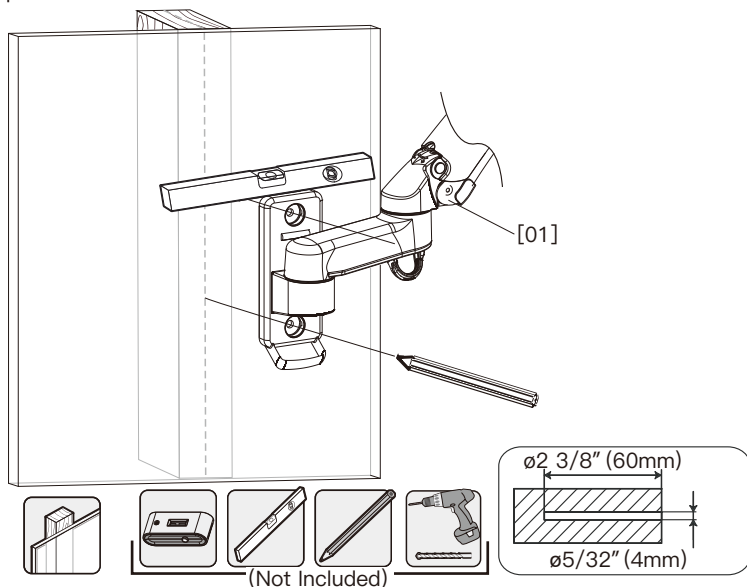


3/8" (10mm)
Concrete Drill Bit

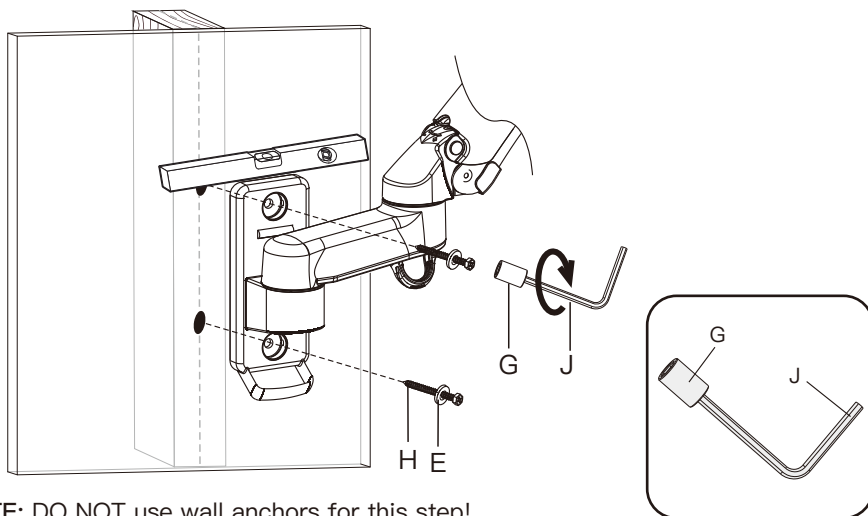
Hammer

1a. Wood Stud Option

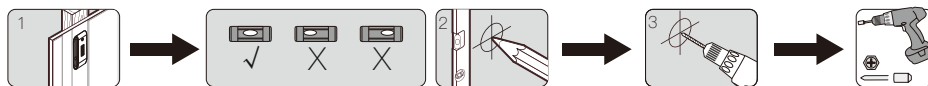
- 1a-1 Position the arm assembly [01] at your desired height, level the arm assembly [01] and mark the pilot hole locations



- 1a-2 Drill 2 pilot holes using a 5/32\" (4mm) diameter drill bit. Make sure the depth is not less than 2 3/8\" (60mm). Install the arm assembly [01] using lag screws [H] and washers [E].

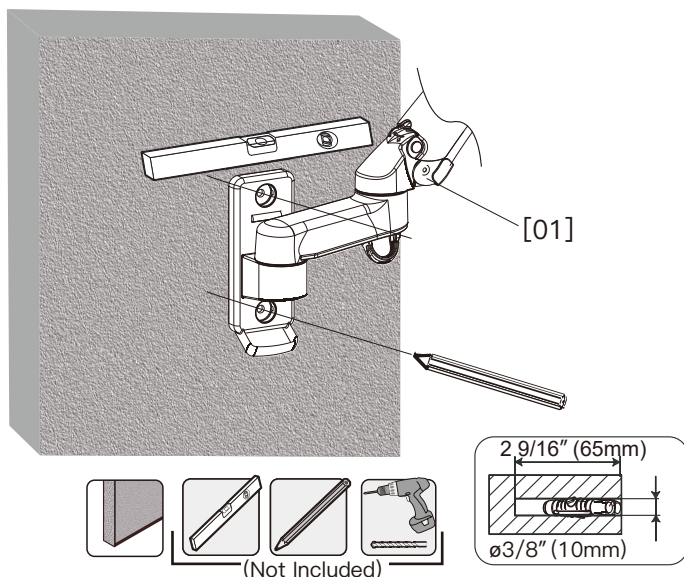


NOTE: DO NOT use wall anchors for this step!



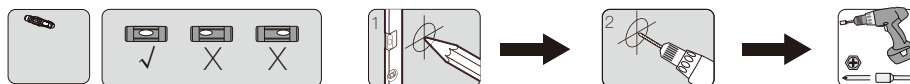
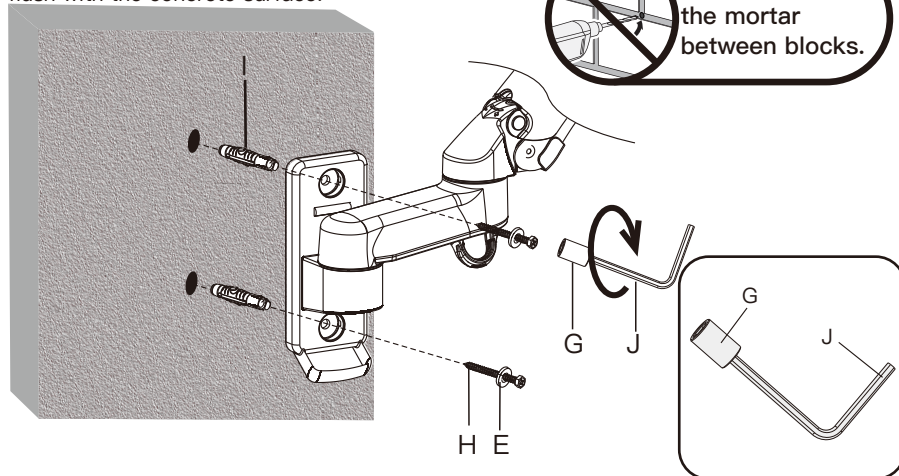
1b. Solid Concrete or Concrete Block Option

- 1b-1 Position the arm assembly [01] at your desired height, level the arm assembly [01] and mark the pilot hole locations.

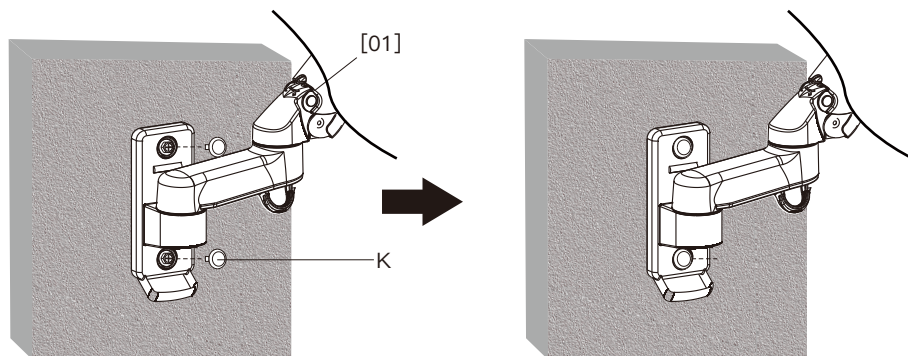


- 1b-2 Drill 2 pilot holes using a 3/8" (10mm) diameter drill bit. Make sure the depth is not less than 2 9/16" (65mm). Install the arm assembly [01] using lag screws [H], washers [E] and anchors [I]

NOTE: Be sure the anchors [I] are seated flush with the concrete surface.



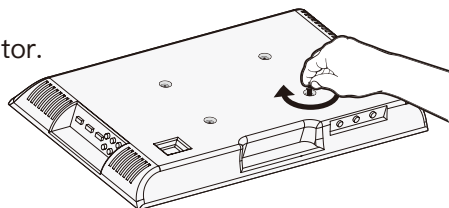
2. Attach the Decorative Covers [K] to Arm Assembly [01]



3. Secure the Monitor Brackets [02] to the Monitors

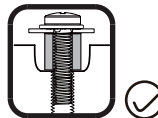
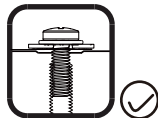
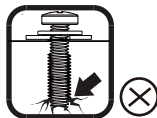
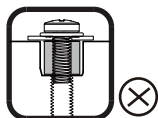
Select Monitor Bolts

Only one Size of the bolt fits your monitor.



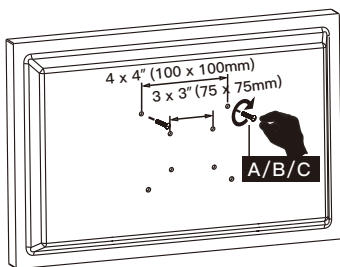
Bolt length: Verify adequate thread engagement with bolts or bolts/spacers combination. We recommend thread engagement by at least 5 turns.

- Too short will not hold the Monitor.
- Too long will damage the Monitor.



Option A: No Need to Attach Monitor Brackets [02] to Monitors

3A-1



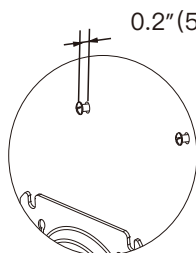
Secure two pcs bolts into the top VESA holes on the back of the monitor manually.

3" (75mm) x 3" (75mm)
4" (100mm) x 4" (100mm)



Phillips
Screwdriver

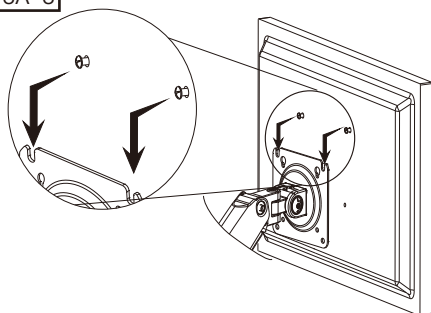
3A-2



0.2" (5mm) spacing left

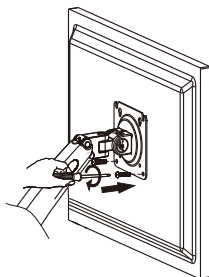
Please keep about 0.2" (5mm) spacing left for the two bolts.

3A-3



Hang the monitor with two bolts onto the arm assembly [01]

3A-4



Secure the monitor to arm assembly [01] by screwing the other 2 pcs bolts.

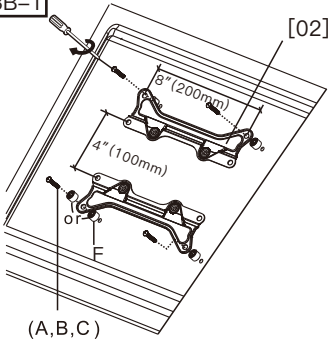
The tension is preset at 8.8–11lb (4–5kg). After hanging the monitor to the mount, please release the monitor slowly to prevent it from falling suddenly.



Phillips
Screwdriver

Option B: Need to Attach Monitor Brackets [02] to Monitors

3B-1

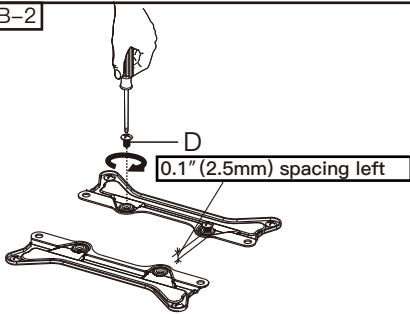


Secure monitor brackets [02] to monitor using 4 pcs bolts(A/B/C) manually. If necessary, the spacers [F] can be used.

8" (200mm) x 4" (100mm)
8" (200mm) x 8" (200mm)

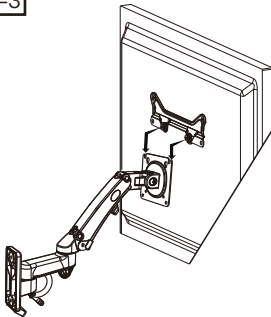


3B-2



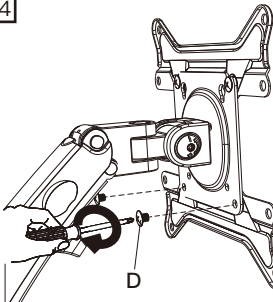
Thread 2 pcs bolts [D] to the holes in the middle of the upper monitor bracket [02]. Please keep about 0.1" (2.5mm) spacing left for the bolts.

3B-3



Hang the monitor with monitor brackets [02] onto the arm assembly [01].

3B-4

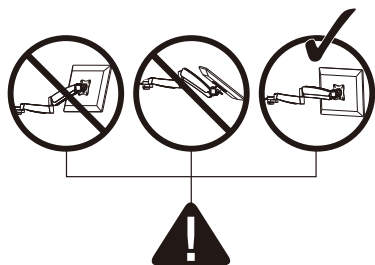


Secure the monitor to arm assembly [01] by tightening all the four pcs bolts [D].

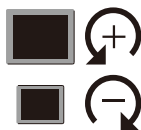
The tension is preset at 8.8–11lb (4–5kg). After hanging the monitor to the mount, please release the monitor slowly to prevent it from falling suddenly.



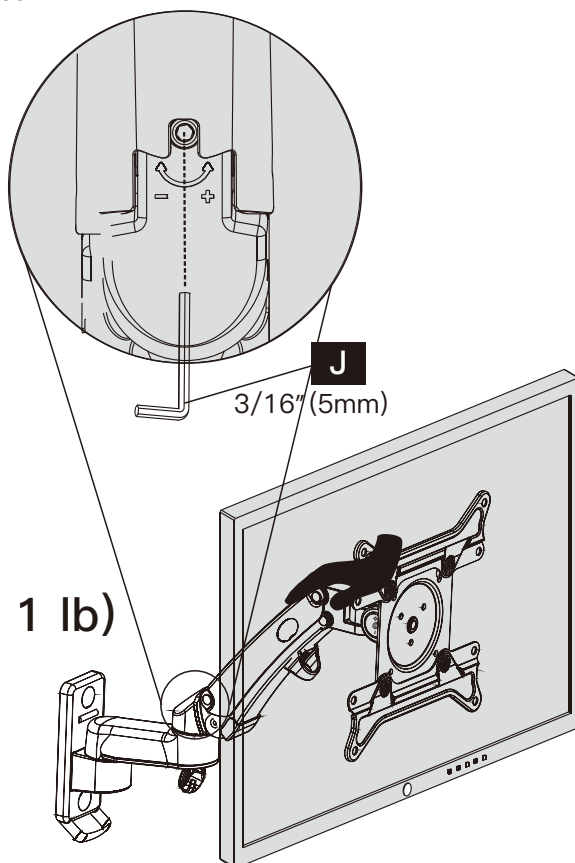
4. Adjust Gas Spring Tension



Be sure to keep the arm in horizontal position during adjustment. Or else, it would be difficult to adjust the mount or damage the mount.



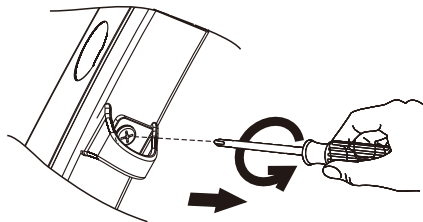
1. If the monitor can stay at the desired height by itself, no adjustment needed.
2. If the monitor rises up, press the arm to keep it in horizontal position and then use the 5mm Alley key [J] to turn the bolt clockwise(“-” direction) to reduce tension of the arm only until the monitor can stay at the desired height by itself.
3. If the monitor falls down, lift the arm to keep it in horizontal position and then use the 5mm Alley key [J] to turn the bolt counter-clockwise(“+” direction) to increase tension of the arm only until the monitor can stay at the desired height by itself.



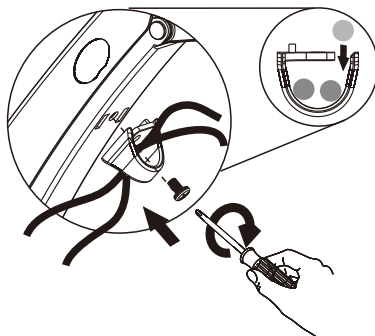
(1 rotation \approx 1 lb)

5. Route Cables along the Arm

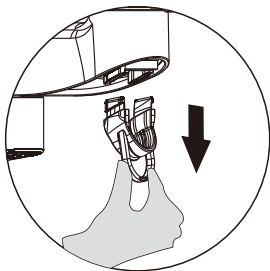
- ① Loosen the preassembled bolt on the arm, and keep the bolt for the use in next step



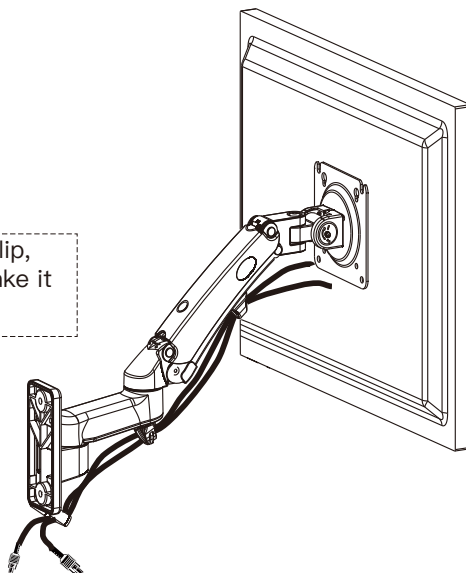
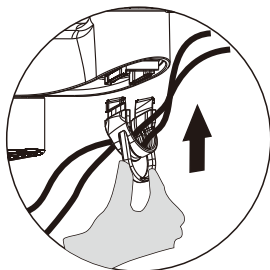
- ④ Then tighten the bolt to secure the cable clip to the arm



- ② Pinch the cable clip to make it detach from the arm



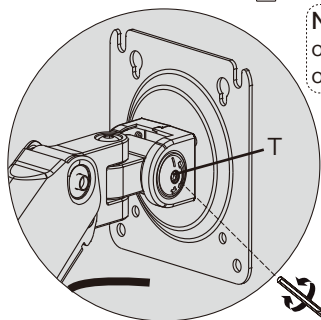
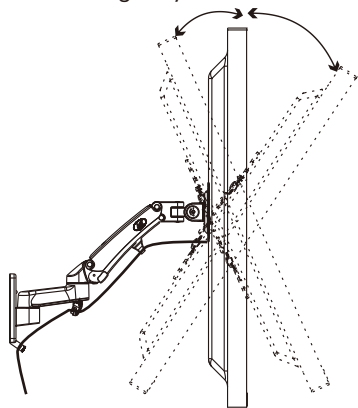
- ③ Put the cables into the cable clip, then pinch the cable clip to make it attach to the arm



Adjustments

Tilt Adjustment

1. Loosen the preassembled tilt bolt [T]
2. Adjust your monitor to desired tilt angle.
3. Tighten the preassembled tilt bolt [T] until the monitor can stay at the desired tilt angle by itself.

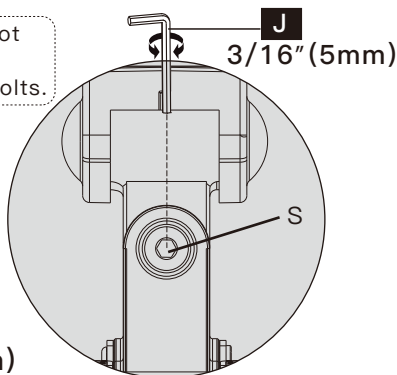
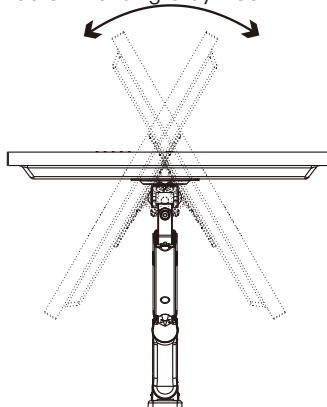


Note: Please do not over-tighten or over-loosen the bolts.

3/16" (5mm)

Swivel Adjustment

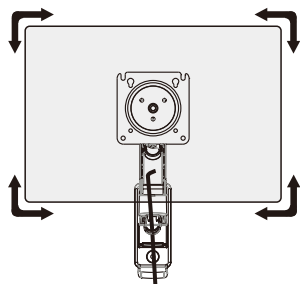
1. Loosen the preassemble swivel bolt [S]
2. Adjust your monitor to desire swivel angle.
3. Tighten the preassembled swivel bolt [S] until the monitor can stay at the desired swivel angle by itself.



3/16" (5mm)

Rotation Adjustment

Only suitable for the monitor with the center of gravity in the center position.



360°
Rotation

