

# RADIO CONTROL VIPER MIST RACER INSTRUCTION MANUAL

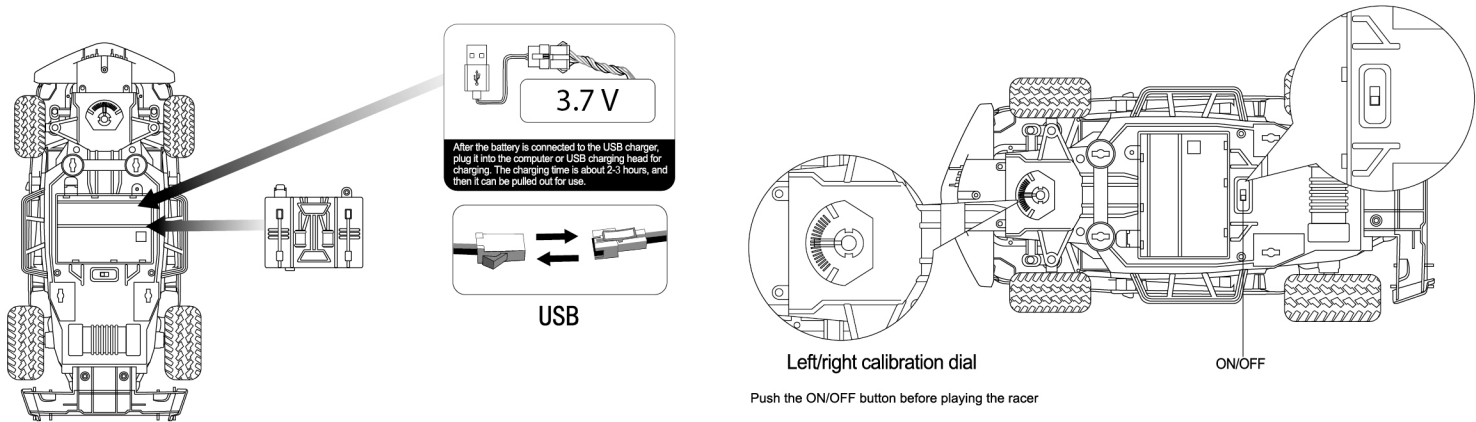
## Introduction

Thank you for purchasing the Viper Mist Racer.  
Before playing the Viper Mist Racer, please read the instruction manual carefully and keep it for reference.



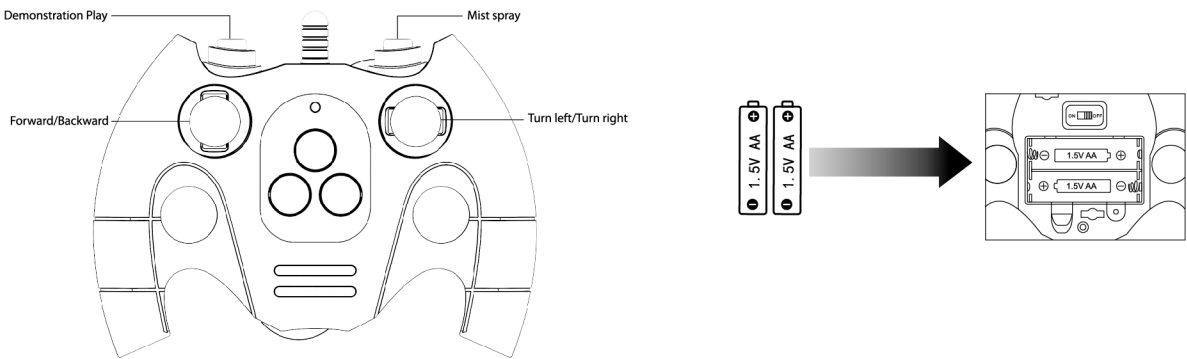
This product is suitable for children of 8 years old or above.  
Controller: Requires 2 (Two) 1.5V AA size Alkaline batteries(not included)  
Viper Mist Racer: Powered by a rechargeable and non-replaceable 3.7V Lithium battery (included)  
Caution: This Product is only used in the 3.7 V output device plug!

## Batteries Installation



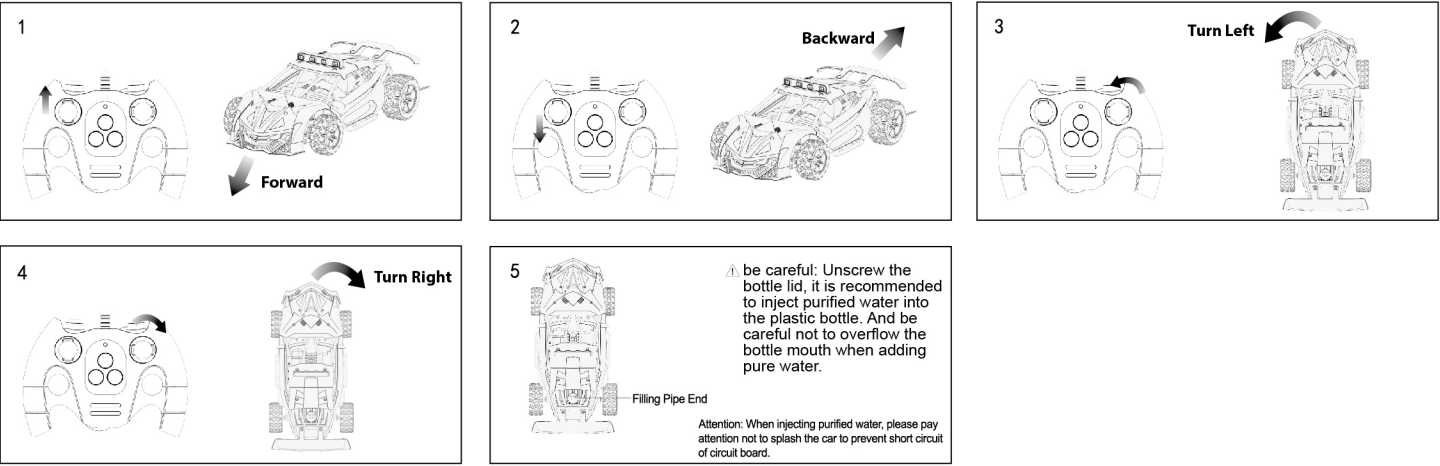
For Viper Mist Racer  
1. Remove the screw and open the battery cover.  
2. Install the Rechargeable 3.7V Lithium battery.  
3. Put the screw back to lock the battery cover.

## Batteries Installation



For Controller  
1. Remove the screw and open the battery cover  
2. Install two 1.5V AA size Alkaline batteries  
3. Put the screw back to lock the battery cover

## Functional Description of the Controller and Viper Mist Racer



## Instructions

- Install the 3.7V lithium battery on the bottom of viper mist racer and switch on before playing the vehicle.
- Install two 1.5V AA size Alkaline batteries on the controller before starting to control the vehicle.
- Remove the batteries on both of the viper mist racer and controller after use.
- Control distance: around 65ft.
- Play time: around 30 minutes if the battery is full in charge
- Charging time: around 2-3 hours
- Set includes: Viper Mist Racer x1, Controller x1, 3.7V Rechargeable Lithium battery x1, USB cable x1, Plastic Bottle x1, Screw Driver x1, Instruction manual x1.
- This product is controlled by 2.4GHz channel.

## IMPORTANT SAFEGUARDS

- Adult supervision required when you play the vehicle or charge the rechargeable lithium battery.
- Please take out the battery of the controller and the vehicle if you do not use the product for a long time.
- Disconnect the rechargeable battery and the plug from the vehicle before charging.
- Connect the rechargeable battery with the USB cable and plug the USB port into the corresponding socket.
- This product can be only charged by charging-only USB cable (Included).
- Adapters over 5V such as quick chargers are not allowed.
- Do not use another non-replaceable and rechargeable battery which is not provided by the set.
- Do not play the vehicle in the water or damp environment.
- Safe disposal of batteries. Do not throw batteries in the fire because the battery will leak and cause an explosion.

## FCC ID:2AHGJJMS039-27-1

This device complies with Part 15 of FCC Rules.  
Operation is subject to the following two conditions:  
(1) This device may not cause harmful interference.  
(2) This device must accept any interference received, including interference that may cause undesired operation.

Warning: Changers or modifications to this unit not expressly approved by the party responsible for the compliance could void the user's authority to operate the equipment.

NOTE: This equipment has been tested and found to comply with the limits for a Class B digital device, pursuant to Part, 15 of the FCC Rules. These limits are designed to provide reasonable protection against harmful interference in a residential installation. This equipment generates, uses and can radiate radio frequency energy and, if not installed and used in accordance with the instructions, may cause harmful interference to radio communications.

However, there is no guarantee that interference will not occur in a particular installation. If this equipment does cause harmful interference to radio or television reception, which can be determined by turning the equipment off and on, the user is encouraged to try to correct the interference by one or more of the following measures:

- Reorient or relocate the receiving antenna.
- Increase the separation between the equipment the receiver.
- Connect the equipment into an outlet on a circuit different from that to which the receiver is connected.
- Consult the dealer or an experienced radio/TV technician for help.

RF Warning statement:  
This equipment complies with FCC radiation exposure limits set forth for an uncontrolled environment .

Conforms to ASTM F963-17  
CLASS 1 LED PRODUCT

**CAUTION: POSSIBLE HEAT HAZARD**  
1) If the battery needs to recharge, please wait 10-15 minutes to let the battery cool down before charging.  
2) Do not overcharge the battery. The battery should be removed from charger immediately and cooled down if the battery is in the high temperature. Otherwise, the battery may become damaged. Always pat attention to when you are charging the battery. Do not disassemble or reconstruct the battery. Do not connect the battery with an electrical outlet.

**WARNING: TO AVOID BATTERY LEAKAGE**  
1) Be sure to insert the batteries correctly, and always follow the toy/game and battery manufacturers' instructions.  
2) Do not mix old and new batteries or alkaline, standard (carbon-zinc) or rechargeable (nickel-cadmium) batteries.  
3) Always remove weak or dead batteries from the product.  
4) Remove the battery if the product is is left unused for a long period of time.

**FCC Radiation Exposure Statement:**  
This equipment complies with FCC radiation exposure limits set forth for an uncontrolled environment .

**Distributed by: JM Manufacturing (HK) Ltd.**  
**Unit G, 4/F Kaiser Estate, Phase 2,**  
**No. 47-53 Man Yue Street, Hung Hom, Kowloon, Hong Kong**  
**Made in Shantou, China**