

# KENWOOD

## 60cm Frost Free Tall Fridge with Water Dispenser KTLD60X15 / KTLD60B17

---

installation / instructions manual



# Contents

<b>safety warnings .....</b>	<b>3</b>
<b>unpacking.....</b>	<b>5</b>
<b>installation.....</b>	<b>6</b>
location .....	6
levelling the unit.....	6
free space requirements.....	6
installing the door handle .....	6
installing the water tank.....	7
reversing the door swing .....	7
installing in pairs with freezer unit (optional) .....	11
cleaning before use .....	12
before using your unit.....	12
<b>product overview.....</b>	<b>13</b>
main unit.....	13
<b>operation .....</b>	<b>14</b>
switching on your unit.....	14
super cool mode.....	14
holiday mode .....	14
door alarm .....	15
child lock.....	15
filling the water tank.....	15
receiving water from the water dispenser.....	16
noises inside the unit! .....	16
tips for keeping food in the unit .....	17
<b>cleaning the interior and the exterior of the unit.....</b>	<b>17</b>
cleaning the water tank and water dispenser .....	17
<b>maintenance.....</b>	<b>18</b>
changing the internal LED light .....	18
care when handling / moving your unit.....	18
servicing .....	18
switching off for long periods of time .....	18
condensation .....	18
<b>disposal .....</b>	<b>18</b>
<b>specifications.....</b>	<b>19</b>
<b>product fiche.....</b>	<b>19</b>

## safety warnings

For your continued safety and to reduce the risk of injury or electric shock, please follow all the safety precautions listed below.

- Read all instructions carefully before using the unit and keep them for future reference.
- Retain the manual. If you pass the unit onto a third party, make sure to include this manual.
- This appliance is intended for indoor household use and similar applications such as:
  - farm houses and by clients in hotels, motels and other residential type environment;
  - bed and breakfast type environment;
  - staff kitchen areas in shops, offices and other working environment;
  - catering and similar non-retail applications.
- Ensure that the plug is easily accessible to enable disconnection from the mains supply.
- If the mains cable is damaged, it must be replaced by the manufacturer, its service agent or a qualified technician in order to avoid a hazard.
- Choose a location for your unit away from heat sources such as radiators or fires as refrigerant and vesicant are burnable.
- The unit must be manoeuvred by a minimum of 2 persons.
- This appliance can be used by children aged from 8 years and above and persons with reduced physical, sensory or mental capabilities or lack of experience and knowledge if they have been given supervision or instruction concerning use of the appliance in a safe way and understand the hazards involved. Children shall not play with the appliance. Cleaning and user maintenance shall not be made by children without supervision.
- Children should be supervised to ensure that they do not play with the unit.
- If your unit is fitted with a lock to prevent children being trapped inside, keep the key out of reach and not in the vicinity of the unit.

- Do not store explosive substances such as aerosol cans with a flammable propellant in this appliance.
- Do not store bottles or glass containers in the freezer compartment. Contents can expand when frozen (fizzy drinks) which may break the bottle and damage your freezer compartment. (If applicable)



### **WARNING**

- Keep ventilation openings in the unit enclosure or in the built-in structure clear of obstructions.
  - Do not use mechanical devices or other means to accelerate the defrosting process, other than those recommended by the manufacturer.
  - Do not use electrical appliances inside the food storage compartments of the unit, unless they are of the type recommended by the manufacturer.
  - Do not damage the refrigerant circuit (The refrigerant is a very environmental-friendly gas but is also combustible. Take care when transporting or moving the unit to ensure that the refrigeration circuit is not damaged. In the event of damage avoid naked flames or ignition sources and ventilate the room in which the unit is placed for a few minutes.)
  - When positioning the appliance, ensure the supply cord is not trapped or damaged.
  - Do not locate multiple portable socket-outlets or portable power supplies at the rear of the appliance.
- 

### **WARNING**



IT IS HAZARDOUS FOR ANYONE OTHER THAN AUTHORISED SERVICE PERSONNEL TO CARRY OUT SERVICING OF REPAIRS WHICH INVOLVE THE REMOVAL OF COVERS.



TO AVOID THE RISK OF AN ELECTRICAL SHOCK DO NOT ATTEMPT REPAIRS YOURSELF.

## Thank you

for purchasing your new Kenwood Fridge.

These operating instructions will help you use it properly and safely.

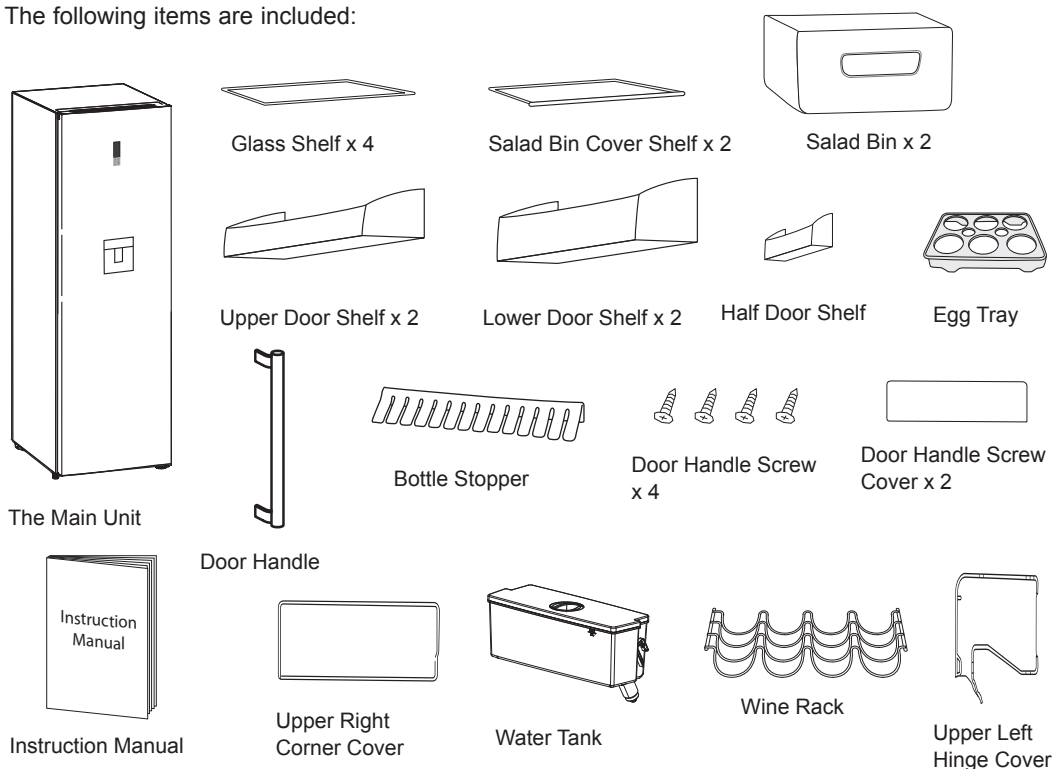
We recommend that you spend some time reading this installation/instruction manual in order that you fully understand all the operational features it offers.

Read all the safety instructions carefully before use and keep this installation/instruction manual for future reference.

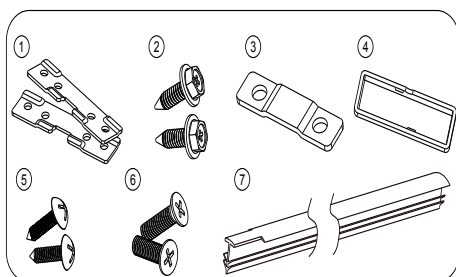
## unpacking

Remove all items from the packaging. Retain the packaging. If you dispose of it please do so according to local regulations.

The following items are included:



If items are missing or damaged please contact Partmaster (UK only).  
Tel: 0344 800 3456 for assistance.



(not included, need to purchase separately).

## installation

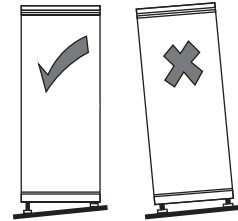
### location

When selecting a position for your unit you should make sure the floor is flat and firm, and the room is well ventilated with an average room temperature of between 10°C and 43°C. Avoid locating your unit near a heat source, e.g. cooker, boiler or radiator. Also avoid direct sunlight as it may increase the electrical consumption. Extreme cold ambient temperatures may also cause the unit not to perform properly. This unit is not designed for use in a garage or outdoor installation. Do not drape the unit with any covering.

### levelling the unit

To do this adjust the two levelling feet at the front of the unit.

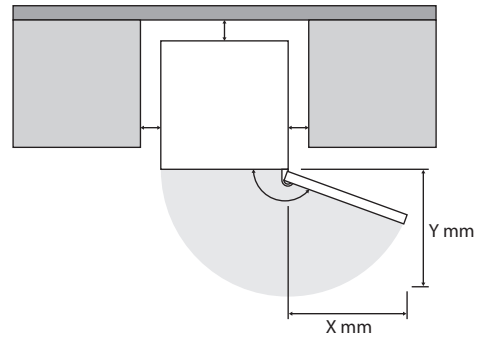
If the unit is not level, the doors and magnetic seal alignments will not be covered properly.



### free space requirements

When installing the unit, ensure that 25 mm of free space is left at both sides, 50 mm at the rear of the unit and 25 mm at the top of the unit. The door can be opened to the right or the left, depending on which best suits the location.

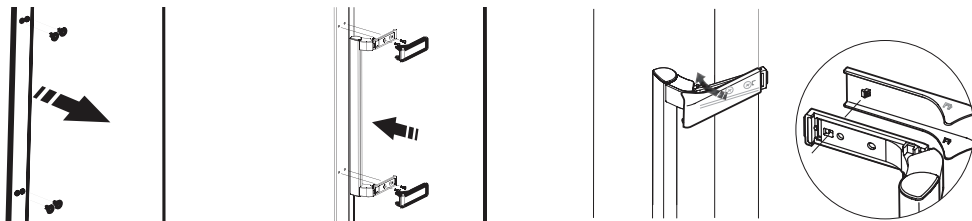
Please ensure there is more than twice the width and depth distance space of the unit to fully open the door to a maximum angle.



### installing the door handle

Remove the screw hole plugs. Place the door handle in place and screw tightly. Cover the screw holes with the door handle screw covers. Button the buckle between the handle and cover, then snap to close the cover from the inside until a 'pop' sound is heard.

This is an easy-to-open door handle. No hard pull is required, instead just twist the handle gently and the door can be pulled open easily.



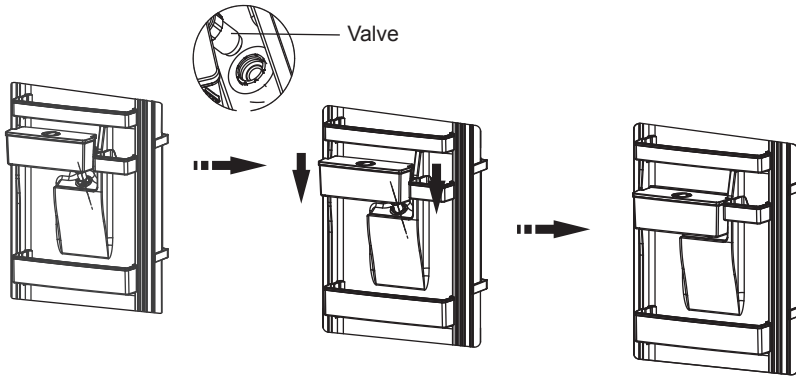
## installation

### installing the water tank

- Insert the valve of the water tank into the hole of the water dispenser and push down the water tank to attach securely with the water dispenser.
- To remove the water tank, hold firmly on both sides and bottom of the water tank then push up.



Be careful not to press on the valve.



### reversing the door swing

**tools required:** Philips style screwdriver / Flat bladed screwdriver / Hexagonal spanner



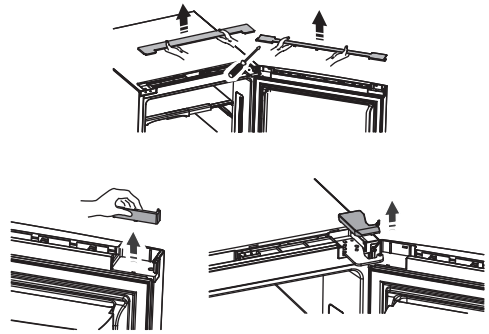
- Ensure the unit is unplugged and empty.
- To take the door off it is necessary to tilt the unit backwards. You should rest the unit on something solid, e.g. a chair just below the top panel.
- All parts removed must be saved to do the reinstallation of the door.
- Do not lay the unit flat as this may damage the coolant system.
- We recommend that 2 people handle the unit during assembly.
- If you want to have the door swing reversed, we recommend that you contact a qualified technician. You should only try to reverse the door yourself if you believe that you are qualified to do so.

## installation

1. Remove all door shelves and water tank. Remove the upper cover, upper hinge cover, upper door cover and upper door corner block.



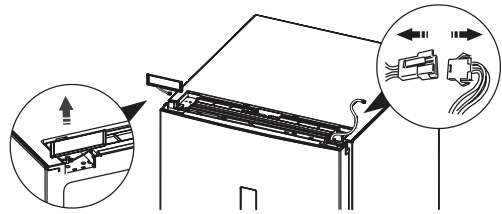
Upper hinge cover has left and right side. The upper hinge cover packed as an accessory is for the left side.



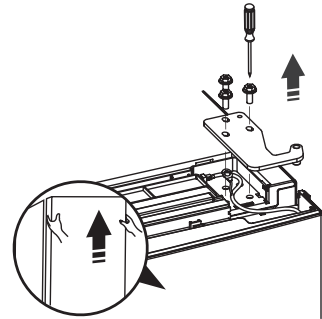
2. Unplug the electrical cord. Remove the upper corner cover.



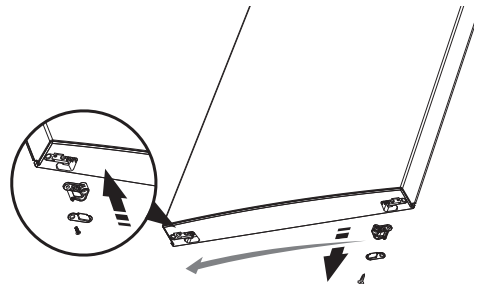
Upper corner cover has left and right side. There is the letter "L" and "R" at the back to identify which side it belongs to. The upper corner cover packed as an accessory is for the right side.



3. Remove the screws and loosen the wire from the hinge. Remove the upper hinge. Lift the door and place it on a padded surface to prevent from being scratched.



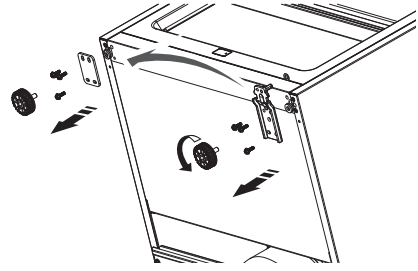
4. Remove the stopper and stop block from the bottom of the door and move them to the opposite side. Screw tightly.



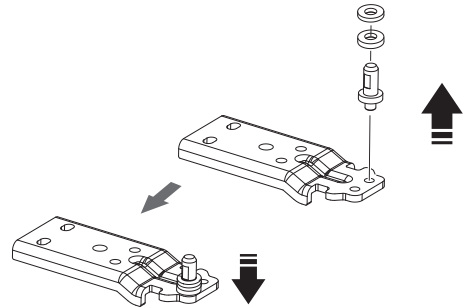


## installation

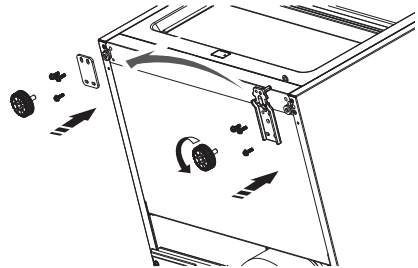
5. Lay down the unit. Remove both levelling feet, levelling feet fix board and bottom hinge.



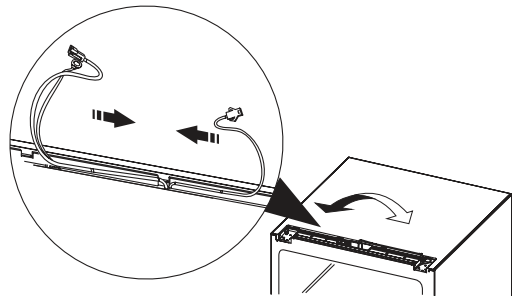
6. Swap the position of the levelling feet fix board with the bottom hinge. On the bottom hinge, move the position of the bottom hinge pin to the other hole. Tighten the pin securely.



7. Screw the levelling feet fix board, bottom hinge and levelling feet tightly on their new position.



8. Stand the unit. Swap the position of the wires between the left and right slots on top of the unit.

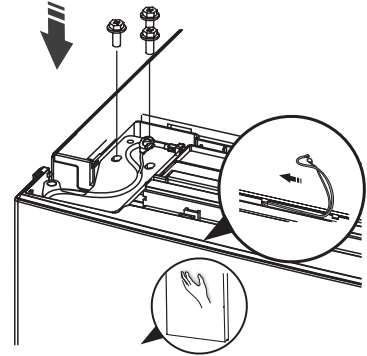


## installation

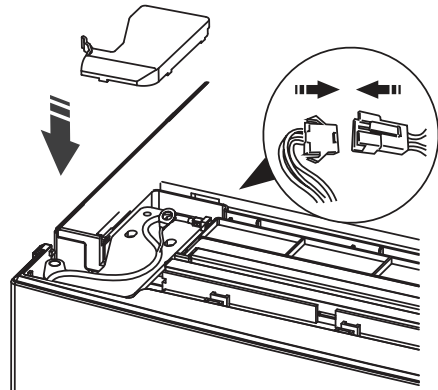
- Reverse the upper hinge and place it on its new position. Fix the wire on the hinge. Place the bottom hole of the door onto the bottom hinge pin. Insert the upper hinge pin into the upper hole of the door. Tighten the pin securely. Screw the upper hinge tightly.



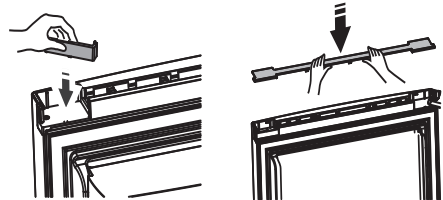
Ensure the door is aligned horizontally and vertically, so that the seals are closed on all sides before finally tightening the pin.



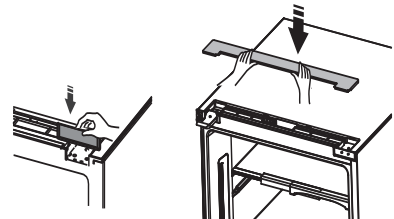
- Plug the electrical cord. Cover the upper hinge with the upper hinge cover.



- Reverse the upper door corner block and attach on the door. Put back the upper door cover.



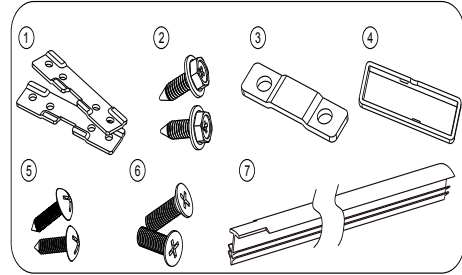
- Move the magnet cord to the opposite side and attach the corner cover. Put back the upper cover.
- Move the door handle to the other side of the door accordingly.



## installation

### installing in pairs with freezer unit (optional)

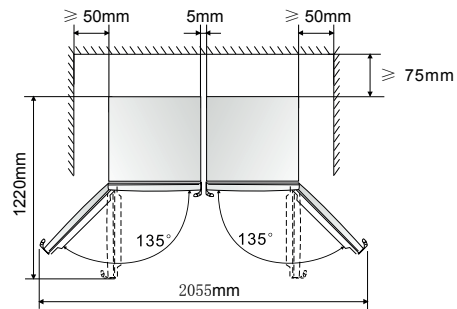
You can install the fridge with a freezer unit side by side in pairs by attaching them with fitting kit accessories (not included, need to purchase separately).



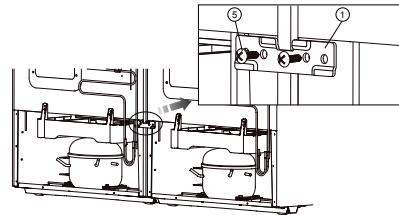
Ensure the fridge and freezer units are of the same height or levelled, otherwise they cannot be attached together. Adjust their levelling feet until both units are levelled.



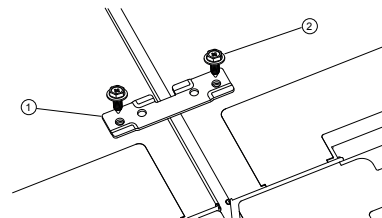
- Ensure there is enough space.
- Before attaching the 2 units, check if the doors and door handles need reversing to the correct position.



1. Place a connecting board at the back of both units and screw tightly.

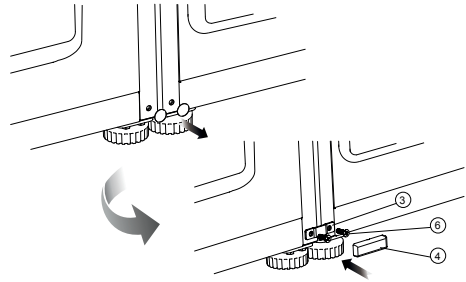


2. Place a connecting board on top of both units and screw tightly.

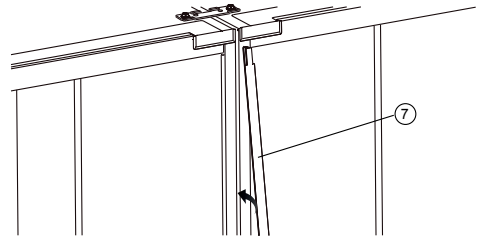


## installation

3. Remove the hole cover above the levelling foot of both units. Place a connecting board and screw tightly. Covers the screws with a screw cover.



4. Insert a connecting strip in the gap between the units.



## cleaning before use

Wipe the inside of the unit with a weak solution of bicarbonate soda. Then rinse with warm water using a sponge or cloth. Wipe completely dry before replacing the drawers. Clean the exterior of the unit with a damp cloth.

If you require more information refer to the **Cleaning** section.



- **Before Plugging in YOU MUST**

Check that you have a socket which is compatible with the plug supplied with the unit.

- **Before Turning On!**

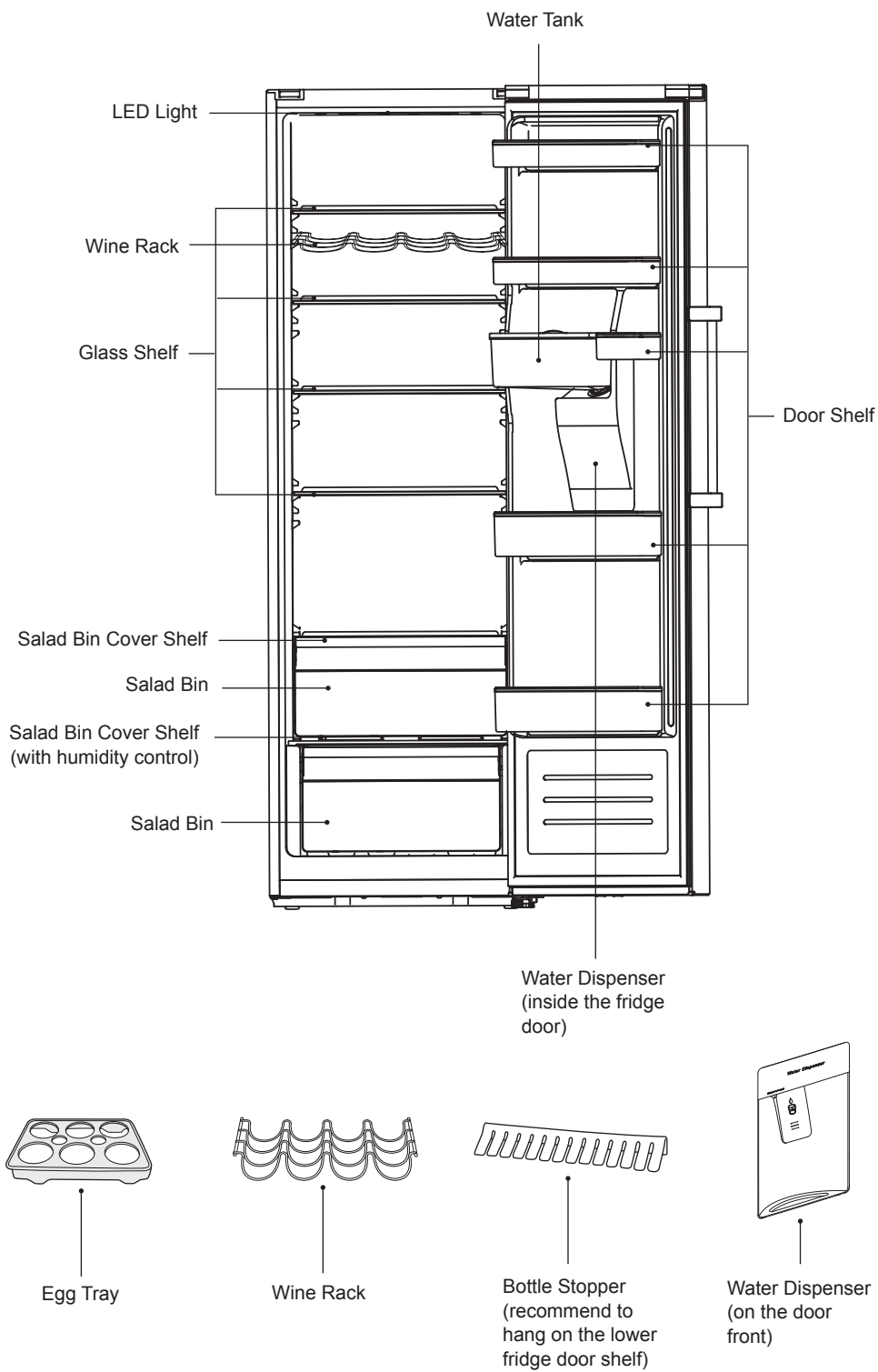
Do not turn on until two hours after moving the unit. The coolant fluid needs time to settle.

## before using your unit

Before placing any food in your unit, turn it on and wait for 24 hours, to make sure it is working properly and to allow it time to fall to the correct temperature. Your unit should not be overfilled.



# product overview

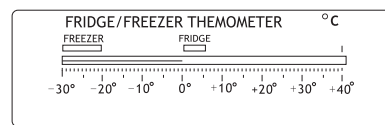
## main unit






# operation

## switching on your unit

1. Connect the mains cable to the mains socket. The internal temperature of your unit is controlled by an electronic control panel on the door.
2. Press  for 1 second to switch on the unit and 5 seconds to switch off the unit. If temperature has been set previously, the previous setting will be displayed when switching on the unit again.
3. Press **T°**  repeatedly to set temperature for the fridge (2 to 8°C).
4. The unit may not operate at the correct temperature if it is in a particularly hot or a particularly cold room, or if you open the door often.
5. To ensure that the unit is cool enough to sufficiently chill your food, wait 24 hours before filling it with food.
6. If you are concerned that your unit is not being kept cold enough and wish to check the temperature, you will need a special fridge/freezer thermometer. These are available from most supermarkets and hardware shops. Place the thermometer in the fridge and leave overnight. The correct temperature for the fridge should be at the recommended 0-8°C.







## super cool mode


- Press  **Super Cool** to activate the super cool mode. The light will be illuminated. Temperature in the fridge is quickly lowered and food in the fridge can be kept fresh for a longer period.
- To switch off, press  **Super Cool** or **T°** , and the fridge temperature will resume to the previous setting.

Otherwise, super cool mode will also automatically deactivate after 6 hours, and the fridge temperature will set to 2°C. The light will extinguish.


## holiday mode

- If you will be away for a period of time, you can set the fridge to holiday mode. Press and hold  for 3 seconds to activate the holiday mode. The light will be illuminated. Temperature in the fridge will automatically set to 15°C. Do not store any food in the fridge during holiday mode.
- To switch off, press either  **Holiday**,  **Super Cool** or **T°** , and the fridge temperature will resume to the previous setting. The light will extinguish.

## door alarm


In case of door alarm, the alarm indicator will illuminate and an alarm will sound, press  to deactivate the alarm.

Alarm



When the door is left opened for over 2 minutes, the alarm will be activated. The alarm will sound 3 times per minute and will automatically stop sounding after 10 minutes if  is not pressed.

Alarm

## child lock

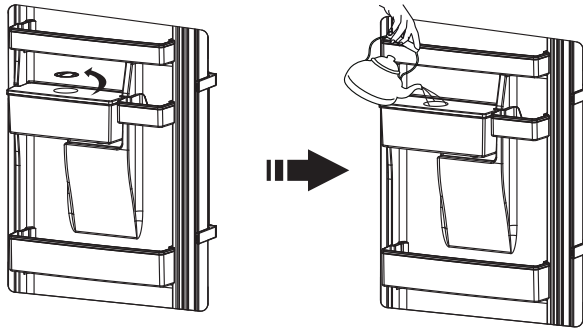
When child lock is activated, pressing all buttons will not work except pressing .

Alarm

- To activate child lock, press and hold  for 3 seconds. The child lock icon will illuminate.
- To deactivate child lock, press and hold  for 3 seconds. The child lock icon will extinguish.

## filling the water tank

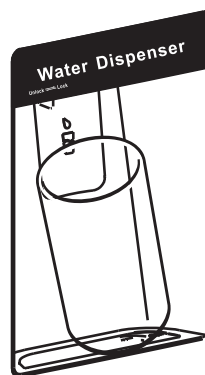
Turn the small cap anticlockwise then remove it from the water tank. Fill drinking water into the water tank through the hole.



- Do not fill above the level, otherwise, it may overflow.
- Before filling with water, ensure that the water tank is steady and in a correct position.
- Apart from drinking water, other beverages (such as milk, juice, carbonated beverage, etc) are not suggested to be used, especially beverages that include grain must not be used (may result in blockage and damage).
- Hot water must not be filled into the water tank directly.
- Do not touch other parts of the unit when filling water, it may lead to leakage.

## receiving water from the water dispenser

- You should use the type of container that can fit under the water dispenser. Place the container properly underneath and push on the lever for water to flow.



- Before you dispense the water, make sure the lock device is at "Unlock" position.



- Ensure to slide to "Lock" position after each use to prevent children from playing with the lever.
- When at "Lock" position, do not push on the lever with force. It will damage the mechanism.



## noises inside the unit!

You may notice that your unit makes some unusual noises. Most of these are perfectly normal, but you should be aware of them!

These noises are caused by the circulation of the refrigerant liquid in the cooling system. It has become more pronounced since the introduction of CFC free gases. This is not a fault and will not affect the performance of your unit. This is the compressor motor working, as it pumps the refrigerant around the system.



## tips for keeping food in the unit

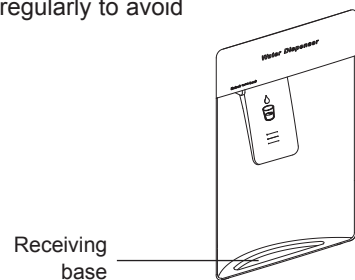
- Cooked meats/fishes should always be stored on a shelf above raw meats/fishes to avoid bacterial transfer. Keep raw meats/fishes in a container which is large enough to collect juices and cover it properly. Place the container on the lowest shelf.
- Leave space around your food, to allow air to circulate inside the compartments. Ensure all parts of the unit are kept cool.
- To prevent transfer of flavours and drying out, pack or cover the food separately. Fruit and vegetables do not need to be wrapped.
- Always let pre-cooked food cool down before you put in the unit. This will help to maintain the internal temperature of the unit.
- To prevent cold air escaping from the unit, try to limit the number of times you open the door. We recommend that you only open the door when you need to put food in or take food out.
- Hang the bottle stopper on any door shelf to hold bottles firmly in place.
- One of the salad bin cover shelves has a humidity control feature (Low / High). To maintain a lower humidity level in the salad bin, slide the feature leftward (towards Low). To maintain a higher humidity level in the salad bin, slide the feature rightward (towards High).

## cleaning the interior and the exterior of the unit

- Remove all the shelves and drawers.
- Wipe the inside of the unit with a weak solution of bicarbonate soda and then rinse with warm water using a sponge or cloth. Wipe completely dry before replacing the shelves, drawers and salad bin.
- Use a damp cloth to clean the exterior, and then wipe with a standard furniture polish. Make sure that the door is closed to avoid the polish getting on the magnetic door seals or inside the unit.
- The grille of the condenser at the back of the unit and the adjacent components can be vacuumed using a soft brush attachment.

## cleaning the water tank and water dispenser

- Remove the water tank. Wash the tank, tank cover, small cap and valve lightly under water.
- After cleaning, dry them thoroughly before installing back in the fridge.
- Wipe the receiving base of the water dispenser with dry towel regularly to avoid overflowing.



# maintenance

## changing the internal LED light

The internal light is an LED panel that cannot be changed by the user. Please contact a qualified service agent.

## care when handling / moving your unit

Hold the unit around its sides or base when moving it. Under no circumstances should it be lifted by holding the edges of the top surface.

## servicing

The unit should be serviced by an authorised engineer and only genuine spare parts should be used. Under no circumstances should you attempt to repair the unit yourself. Repairs carried out by inexperienced persons may cause injury or serious malfunction. Contact a qualified technician.

## switching off for long periods of time

When the unit is not in use for a long period of time, disconnect it from the mains supply, empty all food and clean the appliance, leaving the door ajar to prevent unpleasant smells.

## condensation

Condensation may appear on the outside of the unit. This may be due to a change in room temperature. Wipe off any moisture residue. If the problem continues, please contact a qualified technician for assistance.

## disposal

Old units still have some residual value. An environmentally friendly method of disposal will ensure that valuable raw materials can be recovered and used again. The refrigerant used in your unit and insulation materials require special disposal procedures. Ensure that none of the pipes on the back of the unit are damaged prior to disposal.

Up to date information concerning options of disposing of your old unit and packaging from the new one can be obtained from your local council office.

When disposing of an old unit break off any old locks or latches and remove the door as a safeguard.

# specifications

Rated Voltage	220-240V~, 50 Hz
Rated Current	0.5 A
Rated Power	Defrost: 120 W
Dimension (H x W x D)	1855 x 595 x 710 mm (with handle)

Features and specifications are subject to change without prior notice.

# product fiche

Brand	Kenwood
Model	KTLD60X15 / KTLD60B17
Household Appliance Category	Category 3 (Refrigerator – chiller and refrigerator with a 0-star compartment)
Energy Efficiency Class	A+
Energy consumption <b>165 kWh per year</b> , based on standard test results for 24 hours. Actual energy consumption will depend on how the appliance is used and where it is located.	
Fridge Storage Volume	355 L
Freezer Storage Volume	N/A
Frost Free	
Temperature Rise Time	N/A
Freezing Capacity	N/A
Climate Class	SN, N, ST, T This appliance is intended to be used at an ambient temperature between 10°C and 43°C.
Airborne Acoustical Noise	40 dB(A) re 1 pW

# Need Help with your product?

Your product is supported by Knowhow

under a Trademark Licence from Fisher & Paykel Appliances Italy SpA.

**For help or spare parts please call us on:**

**0344 561 1234**



The symbol on the product or its packaging indicates that this product must not be disposed of with your other household waste. Instead, it is your responsibility to dispose of your waste equipment by handing it over to a designated collection point for the recycling of waste electrical and electronic equipment. The separate collection and recycling of your waste equipment at the time of disposal will help conserve natural resources and ensure that it is recycled in a manner that protects human health and the environment.

For more information about where you can drop off your waste for recycling, please contact your local authority, or where you purchased your product.

DSG Retail Ltd. (co. no. 504877)  
1 Portal Way, London, W3 6RS, UK

Manufactured for DSG Retail Limited under Licence from Fisher & Paykel Appliances Italy SpA.  
DSG Retail Limited is responsible for after sales service.