



## User Manual

### Wireless Keyboard IC-DK02

English

#### Package Contents

- 1 x Wireless Keyboard
- 1 x USB-A to USB-C Charging Cable
- 1 x USB Receiver (remove the back cover of keyboard to get it)
- 1 x User Manual

#### Specifications

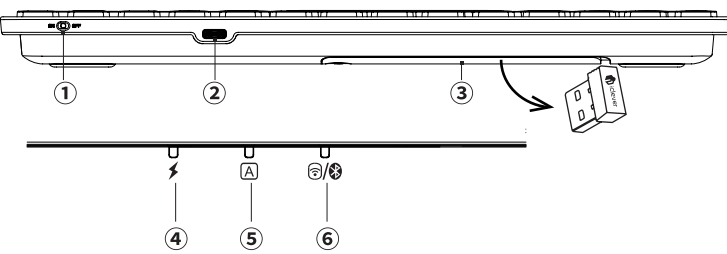
Connection Type	2.4G + Bluetooth 1+ Bluetooth 2
Connected Devices	Up to 3
Layout Compatibility	Windows/Mac
Devices Compatibility	PC/laptop/tablet/smartphone
Lithium Battery Capacity	300mAh
Charge Time	2 hours (USB-C charge)
Continuous Usage Time	Up to 100 days
Sleep Time	2 hours
Material	ABS
Keys Structure	Laptop-style scissor switches
Frequency Band	2402 MHz - 2480 MHz
Maximum Transmission Power	0 dBm

#### System Requirements

- **Windows:** 10, 11, or later (with Bluetooth HID Profile; PC/Laptop/Tablet)
  - **macOS:** 10.15 or later (Mac/iMac)
  - **iOS:** 14 or later (iPhone/Pad)
  - **Android:** 8.0 or later (Smartphone/Tablet)
- Note:** This keyboard may not work properly with Bluetooth adapters, Mac Mini, Samsung Smart TVs, or Nokia phones.

- 1 -

#### Présentation du produit



##### ① Power Switch:

- Slide right/left to turn ON/OFF.
- The power indicator glows red for 3 seconds when turned on.

##### ② Charging Port:

- For charging only.

##### ③ USB Receiver Compartment:

- Remove the cap to access the USB receiver.

##### ④ Charging Indicator:

- Glows red while charging, turns green when fully charged.
- Flashes when battery is low.

##### ⑤ Caps Lock Indicator:

- Press "shift" + "caps lock" to toggle uppercase/lowercase.
- On = Uppercase, Off = Lowercase.

##### ⑥ Power & 2.4G & Bluetooth Channel Indicator:

- Press "fn" + "Q" to 2.4G, and "fn" + "W/E" Bluetooth Channel 1/2.
- Hold and press "fn" + "W/E" for 5 seconds to enter Bluetooth pairing mode, light will flash.

- 2 -

#### Instructions d'appairage

##### A. Connectez-vous via le mode 2.4G

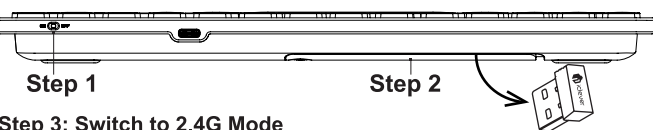
###### Step 1: Power On the Keyboard

Slide the power switch to "ON."

Tip: Charge the keyboard for at least 2 hours before first use.

###### Step 2: Insert the USB Receiver

Remove the USB receiver from the back of the keyboard and plug it into your computer.



###### Step 3: Switch to 2.4G Mode

Press "fn" + "Q" to activate 2.4G mode.

##### B. Connecting via Bluetooth Mode

###### Step 1: Power On the Keyboard

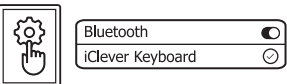
Slide the power switch to "ON."

###### Step 2: Enable Bluetooth on Your Device

Go to Settings > Bluetooth and turn on Bluetooth.

###### Step 3: Pair the Keyboard

- Press "fn" + "W"/"E" to select Bluetooth channel 1 or 2 (each channel pairs with 1 device).
- Hold "fn" + "W"/"E" for 3 seconds to enter pairing mode. The Bluetooth indicator will flash rapidly for 180 seconds.
- In your device's Bluetooth settings, select "iClever Keyboard" from the list.



- 3 -

#### Finding the Pairing Name "iClever BK10 KB" on Different Systems

##### ► For Windows 10 (PC/laptop):

Select the Windows icon > Select **Settings** > **Devices** > Bluetooth & other devices > **Add Bluetooth or other device** > **Bluetooth** > select the device you want to connect to and select **Pair**.

##### ► For macOS (Mac):

Open **System Preferences** > select **Bluetooth** > select the device you want to connect to from the Devices list and click **Pair**.

##### ► iOS/Android (iPhone/smartphone):

Go to **Settings** > select **Bluetooth** > Tap on the device you want to connect to from the **Other Devices** list.

##### B. Switching Between Multiple Previously Connected Devices

Press "fn" + "Q/W/E" to switch between connected devices.

##### C. Re-pairing a Bluetooth Channel

To re-pair a Bluetooth channel, press "fn" + "W/E" to select the desired channel. Then, press and hold "fn" + "W/E" again to enter re-pairing mode.

##### Notes:

auto re-connect function: the keyboard will connect with the last-used device automatically.

---Avoid connecting the keyboard via a Bluetooth adapter.

---If fail to connect, please read the FAQ or email iClever support team.

- 4 -

#### Gray Keys for Mac Users

##### Special gray keys for Mac Users:

Before using, please ensure:

--- The input method has been changed to **British** (not British-PC)

Gray key	Mac OS	Gray key	Mac OS
	\$	shift +	±
	\	shift +	
	`	shift +	~
	€	shift +	@
	#	shift +	"

#### Charge the Keyboard

Output: DC 5V/200mA;

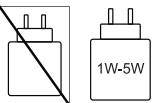
**NOTE: USB charger is not included in the package.**

If the charger's voltage exceeds 7V, the keyboard will stop charging.

**English:** The power supplied by the charger must be between a minimum of 1 watt and a maximum of 5 watts to achieve the maximum charging speed.

**Deutsch:** Die vom Ladegerät gelieferte Leistung muss zwischen minimal 1 Watt und maximal 5 Watt liegen, um die maximale Ladegeschwindigkeit zu erreichen.

**Français:** La puissance fournie par le chargeur doit être comprise entre un minimum de 1 watt et un maximum de 5 watts pour atteindre la vitesse de charge maximale.



- 5 -

#### Keys and Functions

The table below outlines special key combinations and their functions across various operating systems:

Function Keys	iOS&Mac	Android	Windows 10	Mac OS	Windows
Way to use	Direct access	Direct access	Press fn +	Press fn +	Direct access
	Brightness -	Brightness -	Brightness -	F1	F1
	Brightness +	Brightness +	Brightness +	F2	F2
	Home/iOS Mission Control/Mac	Home or N/A	Web Browser	F3	F3
	Switch apps N/A-iPhone	N/A	Switch apps	F4	F4
	Search	N/A	Search	F5	F5
	Previous track	Previous track	Previous track	F6	F6
	Play/pause	Play/pause	Play/pause	F7	F7
	Next track	Next track	Next track	F8	F8
	Mute	Mute	Mute	F9	F9
	Volume -	Volume -	Volume -	F10	F10
	Volume +	Volume +	Volume +	F11	F11
	Screenshot	Screenshot	Screenshot	F12	F12

- 6 -

Special Key	Description
	Press "fn" + "esc" keys to turn on/off fn lock function. For Windows users, your keyboard has by default access to the F-keys. If you prefer to have direct access to Media and Hotkeys such as Volume Down, Volume Up, Play/Pause, and so on, simply press "fn" + "esc" keys to swap them.
	The "fn" key is used in combination with other keys to access special features.
	Press "fn" + "Q" to switch to 2.4G mode.
	Press "fn" + "W" to Bluetooth Channel 1. Hold "fn" + "W" for 5 seconds for pairing mode.
	Press "fn" + "E" to Bluetooth Channel 2. Hold "fn" + "E" for 5 seconds for pairing mode.
	Works as "Windows" key on Windows, and "Option" key on iOS/macOS.
	Works as "Ctrl" key on Windows/Android, and "Option" key on iOS/macOS.
	Works as "alt" / "alt gr" key on Windows, and "Command" key on iOS/macOS.
	Press fn + respective key to navigate page up, page down, home, and end.

- 7 -

#### FAQ

##### What if my product is damaged or looks used?

We're sorry to hear that! Please take a photo of the product and email us at support@iclever.com.

We'll gladly assist you with a return or exchange.

##### Typing Delay or Frequent Disconnections

If you experience delays or disconnections, try these steps:

1. **Restart your device:** Reboot your computer, tablet, or phone.
2. **Stay close:** Move the keyboard closer to your device.
3. **Avoid interference:** Keep at least 8 inches away from speakers, microwaves, Wi-Fi routers, and metal objects.
4. **Use non-metal surfaces:** Avoid placing the keyboard on metal surfaces.
5. **Check updates:** Ensure no background updates are running.
6. **Update your system:** Make sure your device's operating system is up to date.
7. **Test another app/device:** Try the keyboard with a different app or device to identify the issue.

##### Bluetooth Keyboard Compatibility with Mac Devices

1. **Enable Bluetooth:** Go to System Preferences > Bluetooth and ensure it's turned on. Confirm your keyboard is connected.
2. **Restart both devices:** Reboot your Mac and the keyboard to refresh the connection.
3. **Remove and reconnect:** If the keyboard appears but won't connect:
  - Click the "X" next to **iClever BK10 KB** to remove it.
  - Reconnect the keyboard.
4. **Update macOS:** Go to System Preferences > Software Update to ensure your Mac is up to date.
5. **Reset Bluetooth module:** If issues persist:
  - Hold **Shift** + **Option**, click the Bluetooth icon in the menu bar, and select **Debug > Remove all devices**.

- 8 -

##### Bluetooth device doesn't work after computer wakes from sleep mode

###### For Windows:

Adjust Bluetooth Power Settings:

- Press **Win** + **X** and select **Device Manager**.
- Expand Bluetooth and locate your "iClever BK10 KB"
- Right-click the adapter and select **Properties**.
- Go to the Power Management tab.
- Uncheck **"Allow the computer to turn off this device to save power"**.
- Click **OK** and restart your computer to apply the changes.

###### For Mac:

Allow Bluetooth Devices to Wake the Computer:

- Go to Apple Menu > System Preferences > Bluetooth.
- In the bottom-right corner, click Advanced.
- Ensure the following options are checked:
  - Open Bluetooth Setup Assistant at startup if no keyboard is detected
  - Open Bluetooth Setup Assistant at startup if no mouse or trackpad is detected
  - Allow Bluetooth devices to wake this computer
- Close the window to save changes.

##### What if my keyboard isn't working?

1. **Check power:** Make sure the keyboard is turned on. Slide the power switch off, then back on.
2. **Charge the keyboard:** Connect it to a charger for at least 2 hours.
3. **Restart your device:** Reboot your computer, tablet, or phone.  
Remove old connections:  
For iPads, go to Settings > Bluetooth and delete all previous connections under "MY DEVICES."
4. **Refresh Bluetooth:** Turn Bluetooth off and on. On iPads, toggle the switch twice to refresh.
5. **Reconnect:** Re-establish the Bluetooth connection with the keyboard.

- 9 -

##### Can't Charge or Hold a Charge?

1. **Use a different USB port:** Try another USB port for charging.
2. **Check charger voltage:** Ensure the adapter voltage is 7V or lower. Higher voltages can prevent charging.
3. **Check indicator lights:**
  - **Red light:** Charging
  - **Green light:** Fully charged
4. **Direct connection:** For best results, connect the charging cable directly to your computer's USB port.

#### Contact

##### Need Help? Contact Us

We're here to assist you! If you have any questions or need support, please reach out to us: Email: support@iclever.com

##### Stay Connected with Us

We'd love to hear from you! Follow us on social media for the latest updates and tips:

- **Facebook:** @iClever
- **Twitter:** @iClever\_Tech
- **Instagram:** @iclever\_tech

#### UK Declaration of Conformity

Learn more about the UK Declaration of Conformity, please visit the following website:  
<http://files.iclever.com/ic-dk02-uk-doc.pdf>

- 10 -

**Statements of Compliance**  
Product Model: IC-DK02 Date Code: 20240101  
Name and Address of manufacturer:Thousandshores Deutschland GmbH, Bredowstraße 17, Hamburg 22113, DE  
Name and Address of Authorised Representative:APEX CE SPECIALISTS LIMITED, 89 Princess Street, Manchester, M1 4HT,UK  
The statement of compliance is prepared by or on behalf of the manufacturer of the product.  
In the option of the manufacturer, they have complied with either—(i)the applicable security requirements in Schedule 1 of SI 2023 No. 1007  
Provision 5.1-1 of ETSI EN 303 645 & provision 5.1-2 of ETSI EN 303 645;  
Provision 5.2-1 of ETSI EN 303 645;  
Provision 5.3-13 of ETSI EN 303 645;  
The defined support period for the product: 20250101  
signature, name and function of the signatory: *Shen-shen, China* . iClever  
The place and date of issue: 28-02-2024