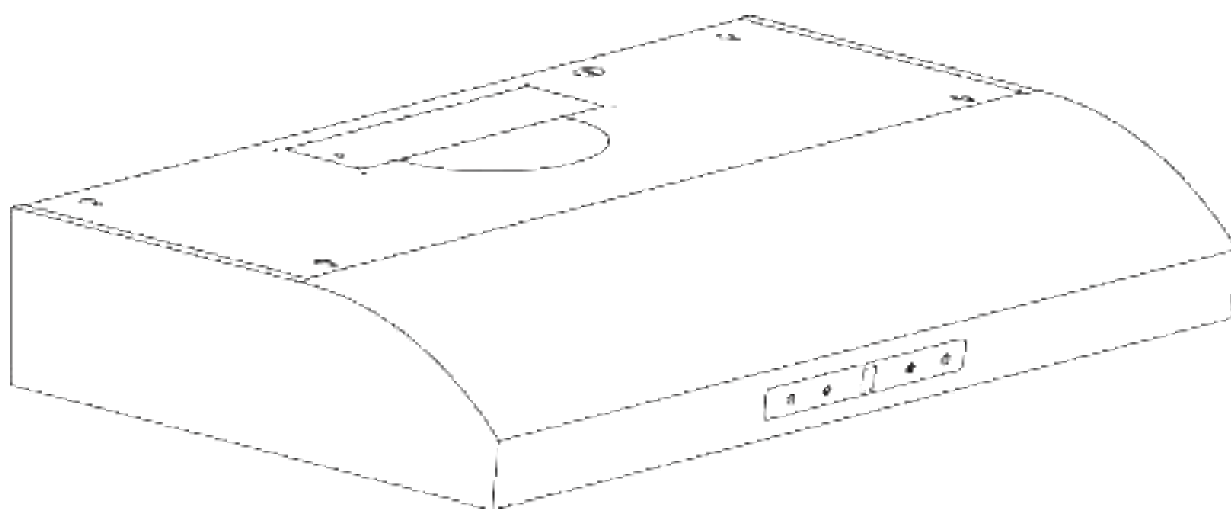




# **Instruction Manual**

## **RANGE HOOD**



**Brand:AOBOSI**  
**Model:6006B**  
**120V~ 60Hz 108W**

**PLEASE READ INSTRUCTIONS CAREFULLY BEFORE ASSEMBLY**  
**RETAIN THIS MANUAL FOR FUTURE REFERENCE**

# CONTENT

SAFETY INSTRUCTIONS .....	3
INSTALLATION .....	10
START USING YOURRANGE HOOD .....	15
TROUBLESHOOTING .....	16
MAINTENANCE AND CLEANING .....	17
ENVIRONMENT PROTECTION .....	19
WARRANTY .....	20

MANUFACTURERS: GUANGDONG ATLAN ELECTRONIC APPLIANCE MANUFACTURE CO., LTD  
ADD: 29-1, FUAN INDUSTRIAL PARK, LELIU, SHUNDE, GUANGDONG, CHINA

Contact: Kelly    Tel: +1 (838) 900 9806    Email: [info@iaobosi.com](mailto:info@iaobosi.com)

## **SAFETY INSTRUCTIONS**

This manual explains the proper installation and use of your range hood, please read it carefully before using even if you are familiar with the product. The manual should be kept in a safe place for future reference.

### **Never to do:**

- Do not try to use the range hood without the grease filters or if the filters are excessively greasy!
- Do not leave frying pans unattended during use because overheated fats or oils might catch fire.
- Never leave naked flames under the range hood.



- If the range hood is damaged, do not attempt to use.
- Do not flame under the range hood; risk of fire.
- CAUTION: Accessible parts may become hot when used with cooking appliances.
- The minimum distance between the supporting surface for the cooking vessels on the hob and the lowest part of the range hood. (When the range hood is located above a gas appliance, this distance shall be at least 65 cm)
- The air must not be discharged into a flue that is used for exhausting fumes from appliances burning gas or other fuels. Range hoods and other cooking fume extractors may adversely affect the safe operation of appliances burning gas or other fuels (including those in other rooms) due to back flow of combustion gases. These gases can potentially result in carbon monoxide poisoning. After installation of a range hood or other cooking fume extractor, the operation of open flued gas appliances should be tested by a competent person to ensure that back flow of combustion gases does not occur.



## Always to do:

- Important! Always switch off the electricity supply at the mains during installation and maintenance such as light bulb replacement.
- The range hood must be installed in accordance with the installation instructions and all measurements followed.
- All installation work must be carried out by a competent person or qualified electrician.
- Please dispose of the packing material carefully. Children are vulnerable to it.
- Pay attention to the sharp edges inside the range hood especially during installation and cleaning.
- Make sure the ducting has no bends sharper than 90 degrees as this will reduce the efficiency of the range hood.
- Warning: Failure to install the screws or fixing device in accordance with these instructions may result in electrical hazards.
- Warning: Before obtaining access to terminals, all supply circuits must be disconnected.
- Always put lids on pots and pans when cooking on a gas cooker.
- When in extraction mode, air in the room is being removed by the range hood. Please make sure that proper ventilation measures are being observed. The range hood removes odours from room but not steam.
- There shall be adequate ventilation of the room when the range hood is used at the same time as appliances burning gas or other fuels.
- Range hood is for domestic use only.



- If the supply cord is damaged, it must be replaced by the manufacturer, its service agent or similarly qualified persons in order to avoid a hazard.
- This appliance can be used by children aged from 8 years and above and persons with reduced physical, sensory or mental capabilities or lack of experience and knowledge if they have been given supervision or instruction concerning use of the appliance in a safe way and understand the hazards involved. Children shall not play with the appliance. Cleaning and user maintenance shall not be made by children without supervision.



## Always to do:

- **Caution:** The appliance and its accessible parts can become hot during operation.  
Be careful to avoid touching the heating elements.  
Children younger than 8 years old should stay away unless they are under permanent supervision.
- There is a fire risk if cleaning is not carried out in accordance with the instructions.
- Regulations concerning the discharge of air have to be fulfilled.
- Clean your appliance periodically by following the method given in the chapter MAINTENANCE.
- For safety reason, please use only the same size of fixing or mounting screw which are recommended in this instruction manual.
- Regarding the details about the method and frequency of cleaning, please refer to maintenance and cleaning section in the instruction manual.
- Cleaning and user maintenance shall not be made by children without supervision.
- When the range hood and appliances supplied with energy other than electricity are simultaneously in operation, the negative pressure in the room must not exceed 4 Pa ( $4 \times 10^{-5}$  bar)
- **WARNING:** Danger of fire: do not store items on the cooking surfaces.
- A steam cleaner is not to be used.
- **NEVER** try to extinguish a fire with water, but switch off the appliance and then cover flame e.g. with a lid or a fire blanket.

## **WARNING**

1. Before servicing or cleaning unit, unplug or disconnect the range hood from the power supply.
  2. TO REDUCE THE RISK OF A RANGE TOP GREASE FIRE:
    - A. Never leave surface units unattended at high settings. Boil overs cause smoking and greasy spillovers that may ignite. Heat oils slowly on low or medium settings.
    - B. Always turn hood ON when cooking at high heat or when flambéing food (i.e. Crepes Suzette, Cherries Jubilee, Peppercorn Beef Flambé).
    - C. Clean ventilating fans frequently.
    - D. Grease should not be allowed to accumulate on fan or filter.
    - E. Use proper pan size. Always use cookware appropriate for the size of the surface element.
  3. TO REDUCE THE RISK OF INJURY TO PERSONS IN THE EVENT OF A RANGE TOP GREASE FIRE, OBSERVE THE FOLLOWING:
    - A. SMOTHER FLAMES with a close-fitting lid, cookie sheet, or metal tray, then turn off the burner. BE CAREFUL TO PREVENT BURNS. If the flames do not go out immediately, EVACUATE AND CALL THE FIRE DEPARTMENT.
    - B. NEVER PICK UP A FLAMING PAN – You may be burned.
    - C. DO NOT USE WATER, including wet dishcloths or towels – a violent steam explosion will result.
    - D. Use an extinguisher ONLY if:
      - 1) You know you have a Class ABC extinguisher, and you already know how to operate it.
      - 2) The fire is small and contained in the area where it started.
      - 3) The fire department is being called.
      - 4) You can fight the fire with your back to an exit.
- <sup>a</sup> Based on “Kitchen Fire safety Tips” published by NFPA.
4. To Reduce The Risk Of Fire Or Electric Shock, Do Not Use This Fan With Any Solid-State Speed Control Device.

### **For the permanently-connected range hood**

5. TO REDUCE THE RISK OF FIRE, ELECTRIC SHOCK, OR INJURY TO PERSONS, OBSERVE THE FOLLOWING:
  - A. Use this unit only in the manner intended by the manufacturer. If you have questions, contact the manufacturer.
  - B. Before servicing or cleaning unit, switch power off at service panel and lock the service disconnecting means to prevent power from being switched on accidentally. When the service disconnecting means cannot be locked, securely fasten a prominent warning device, such as a tag, to the service panel.

### **For the cord-connected range hood**

6. To provide protection against electric shock, connect to properly grounded outlets only.

 **CAUTION:** For General Ventilating Use Only. Do Not Use To Exhaust Hazardous Or Explosive Materials And Vapors.

## **WARNING**

1. TO REDUCE THE RISK OF FIRE, USE ONLY METAL DUCTWORK.

### **For the permanently-connected range hood**

2. TO REDUCE THE RISK OF FIRE, ELECTRIC SHOCK, OR INJURY TO PERSONS, OBSERVE THE FOLLOWING:
  - A. Installation work and electrical wiring must be done by qualified person(s) in accordance with all applicable codes and standards, including fire-rated construction.
  - B. Sufficient air is needed for proper combustion and exhausting of gases through the flue (chimney) of fuel burning equipment to prevent back drafting. Follow the heating equipment manufacturer's guideline and safety standards such as those published by the National Fire Protection Association (NFPA), and the American Society for Heating, Refrigeration and Air Conditioning Engineers (ASHRAE), and the local code authorities.
  - C. When cutting or drilling into wall or ceiling, do not damage electrical wiring and other hidden utilities.
  - D. Ducted fans must always be vented to the outdoors.
    - E. If this unit is to be installed over a tub or shower, it must be marked as appropriate for the application and be connected to a GFCI (Ground Fault Circuit Interrupter) – protected branch circuit.

### **For the cord-connected range hood**

#### **3. GROUNDING INSTRUCTIONS**

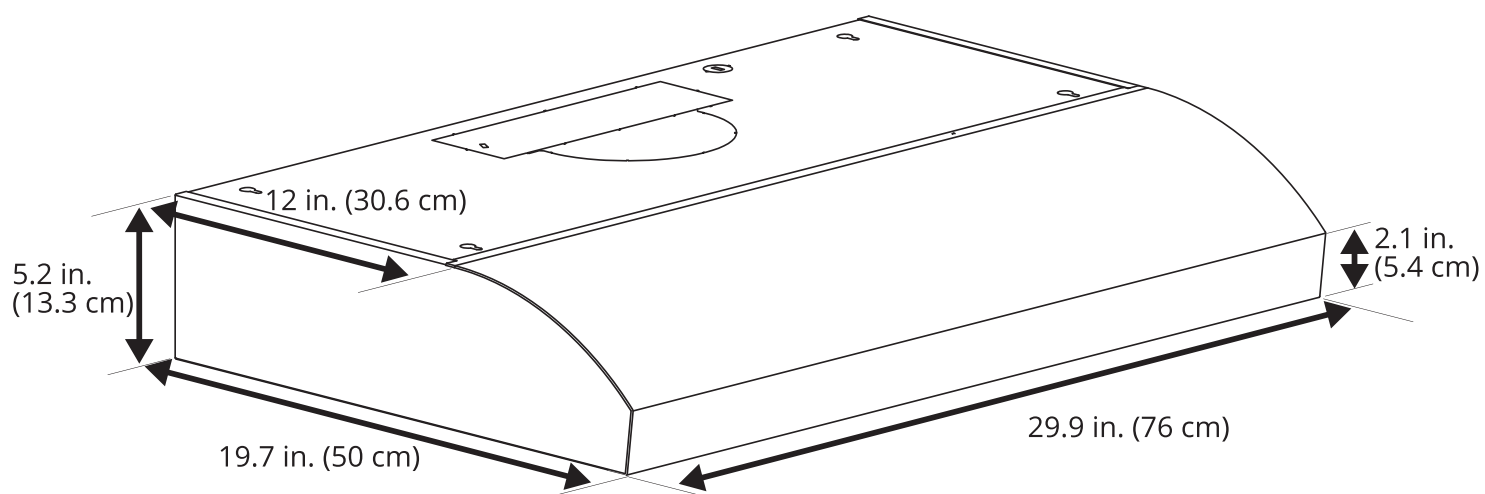
This appliance must be grounded. In the event of an electrical short circuit, grounding reduces the risk of electric shock by providing an escape wire for the electric current. This appliance is equipped with a cord having a grounding wire with a grounding plug. The plug must be plugged into an outlet that is properly installed and grounded.

**WARNING** – Improper grounding can result in a risk of electric shock.

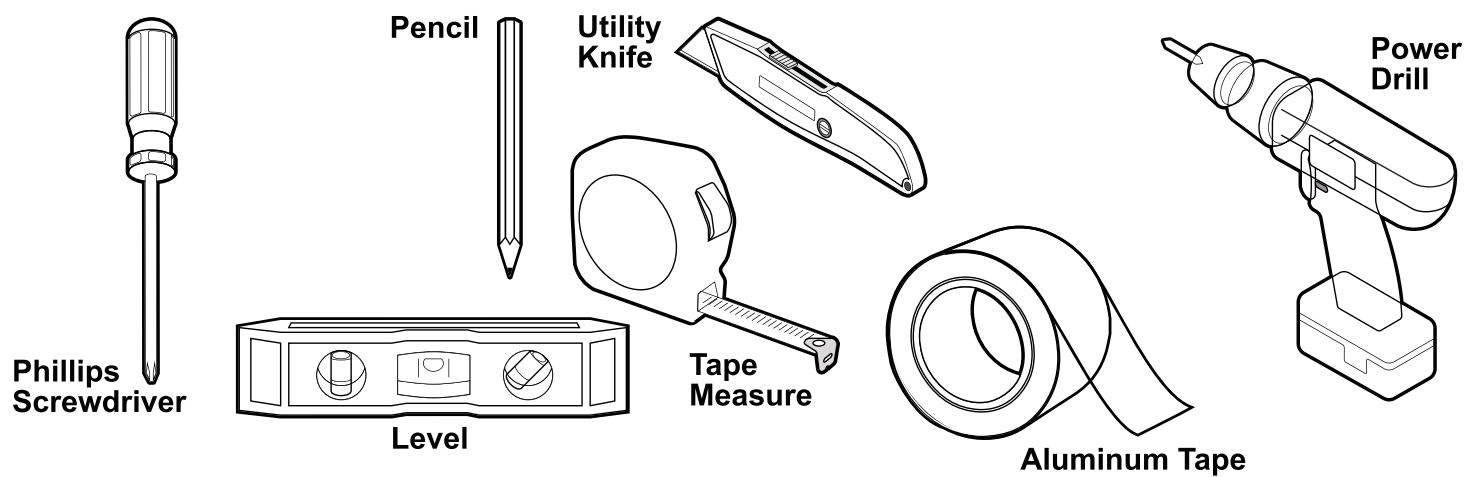
Consult a qualified electrician if the grounding instructions are not completely understood, or if doubt exists as to whether the appliance is properly grounded.

Do not use an extension cord. If the power supply cord is too short, have a qualified electrician install an outlet near the appliance.

## Range Hood Dimensions

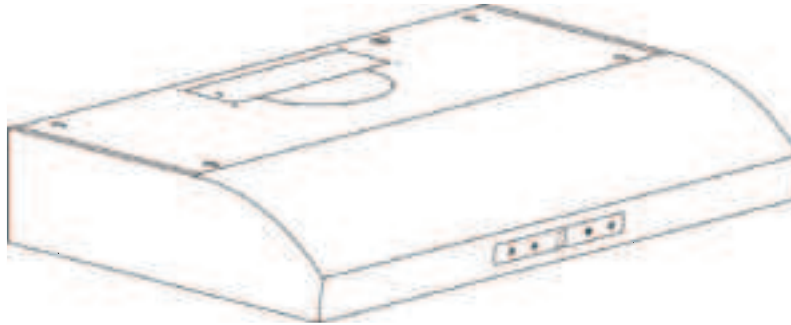


## Required Tools

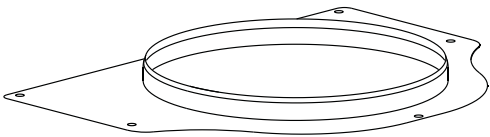




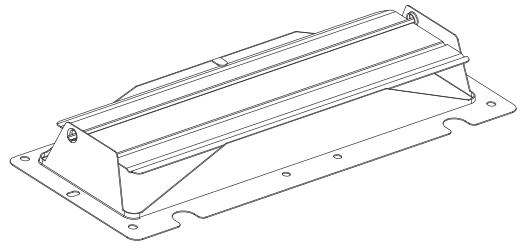
# Included Parts



Range Hood



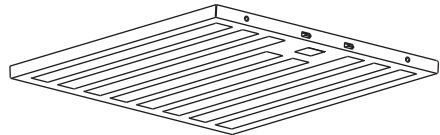
Vent-round Ø 7 in. (17.7 cm)



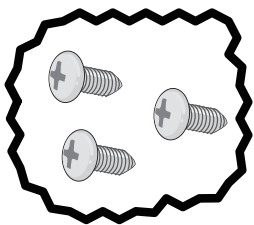
Vent-rectangle 10 in. (8.3 cm x 25.4 cm)



2 Cover plates



2 Filters



Screw bag  
(12pcs ST4\*8,4pcs ST4\*30,4pcs expansion screws)

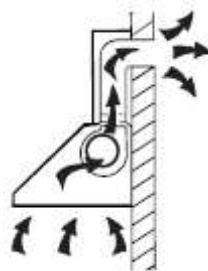
## **⚠ CAUTION**

1. To reduce risk of fire and to properly exhaust air, be sure to duct air outside. Do not vent exhaust air into spaces within walls or ceilings or into attics, crawl spaces, or garages.
2. Take care when using cleaning agents or detergents.
3. Avoid using food products that produce flames under the Range Hood.
4. To avoid motor bearing damage and noisy and/or unbalanced impellers, keep drywall spray, construction dust, etc. off power unit.
5. Your hood motor has a thermal overload which will automatically shut off the motor if it becomes overheated. The motor will restart when it cools down. If the motor continues to shut off and restart, have the hood serviced.
6. For best capture of cooking impurities, the bottom of the hood should be a minimum of 26" (65 cm) and a maximum of 30" (75 cm) above the cooking surface.
7. Two installers are recommended because of the large size and weight of this hood.
8. This product is equipped with a thermostat which may start blower automatically. To reduce the risk of injury and to prevent power from being switched on accidentally, switch power off at service panel and lock or tag service panel.
9. Use with approved wiring for electrical connections only.
10. Please read specification label on product for further information and requirements.
11. Use only with range hood cord-connection kits that have been investigated and found acceptable for use with this model rang hood.

## **INSTALLATION**

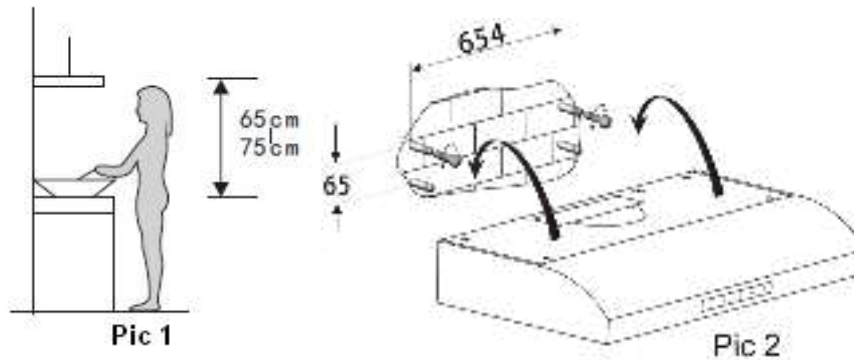
### **A. Wall Mounting**

If you have an outlet to the outside, your range hood can be connected as below picture by means of an extraction duct (enamel, aluminium, flexible pipe or non-flammable material)

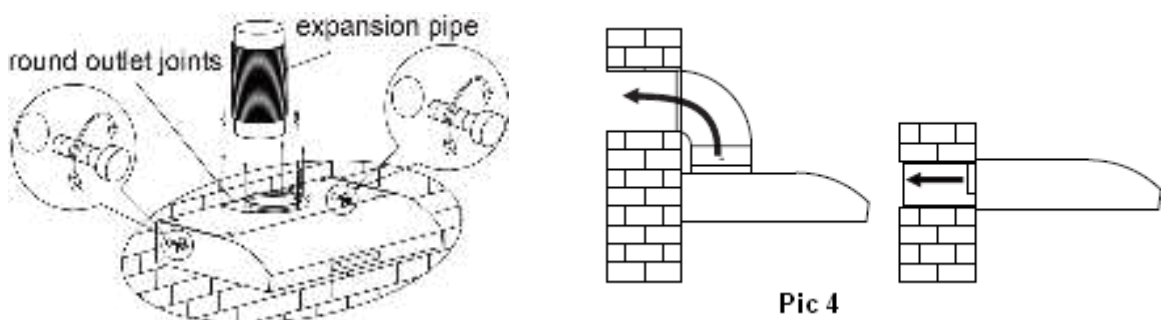


1. Before installation, turn the unit off.

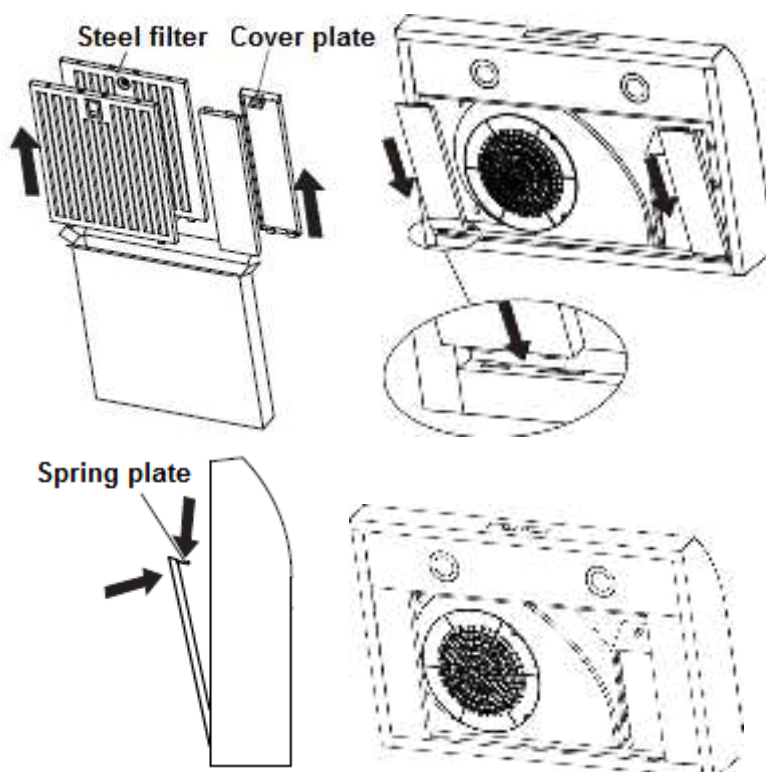
2. The range hoods should be placed at a distance of 65-75cm from the cooking surface for best effect. See pic 1.



3. To install onto the wall, drill 4 holes of  $\varnothing$  8mm on a suitable place according with the centre distance of hole in the back of the range hood. See pic 2.
4. Insert the expansion screws into the holes.
5. Insert and tight the screws(ST4\*30mm) into the plugs.
6. Put up the range hood onto the fixed screws. See pic 2.
7. Then turn the screws into the two holes of inside the hood, and then tighten the screws to secure the hood onto the wall.
8. Attach the outlet joints onto the range hood. (Note: Before installing the air outlet, please select the outlet of the hood and pry open.) Fix the expansion pipe on the outlet joints. Lift up the expansion pipe till it out of the wall through the hole on the wall. See pic 3 & 4. (Note: the expansion pipe is not including, need to purchase separately.)



9. Take out the baffle filter and cover plate from the accessory carton, and then install the two cover plates on both sides of the body. The installation method is as follows:
- Insert the pin of the cover plate into the lower part of the body,
  - Press down the spring plate and push the cover plate then fasten it on the body (see the pic below),
  - Double check whether the cover is firmly installed.

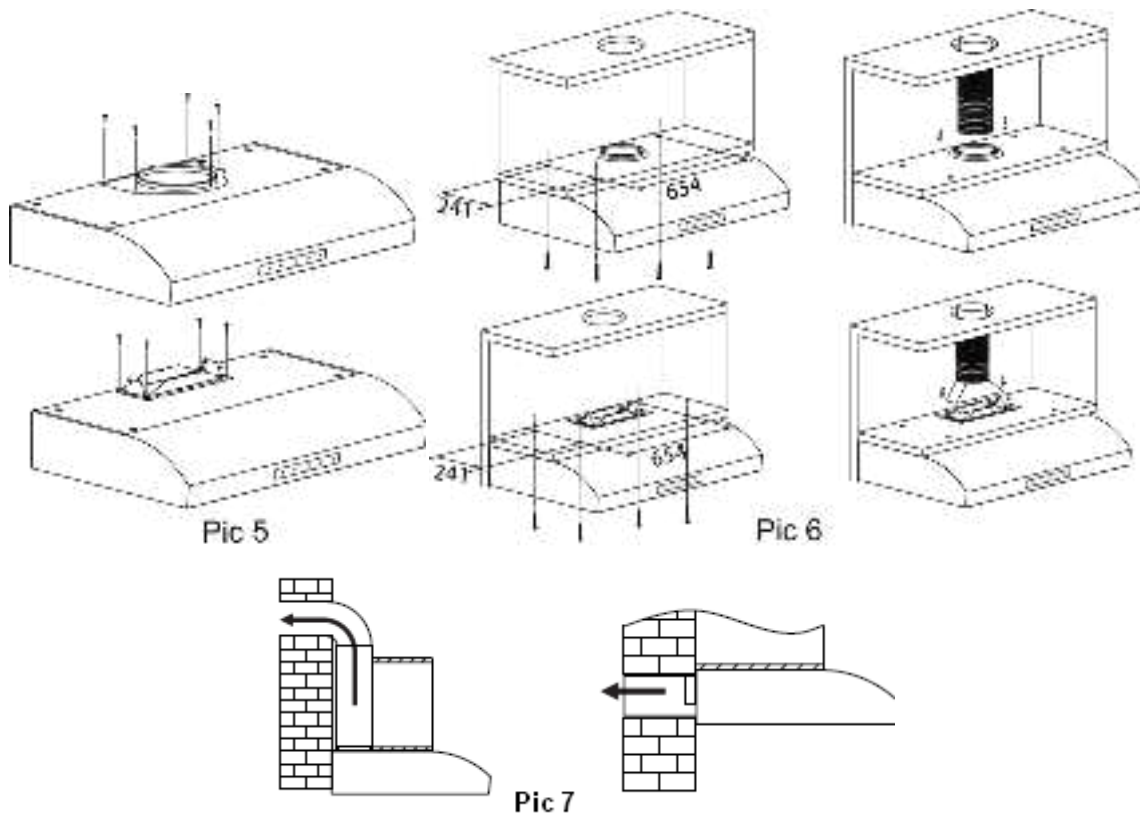


10. Finally, install the baffle filter into the range hood.

## B. Cabinet Mounting

1. Install the outlet joints on the top or back of the hood with screws. See pic 5.
2. Drill 4 holes of  $\varnothing 6\text{mm}$  at the hanging cupboard. Then install the range hood on the bottom of the cupboard, tighten the range hood with enclosed 4 pcs screws (ST4\*30mm). See pic 6.

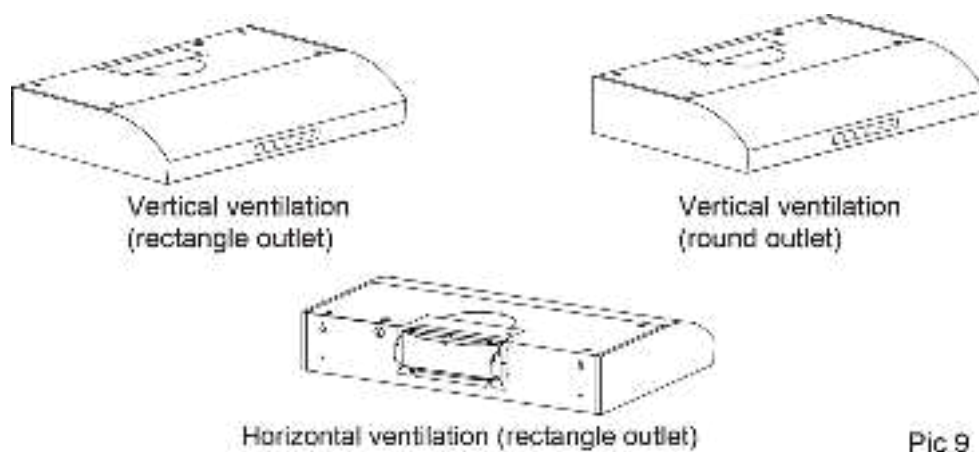
3. Lay the expansion pipe on the outlet joints. Lift up the expansion pipe till it out of the wall through the hole on the wall. See pic 6 & 7. (Note: the expansion pipe is not including, need to purchase separately.)



4. After completion of installation, follow the above steps 9-10 to complete the installation of cover plate and baffle filter.

### Installation attention:

The three air outlets are shown in the following figure:

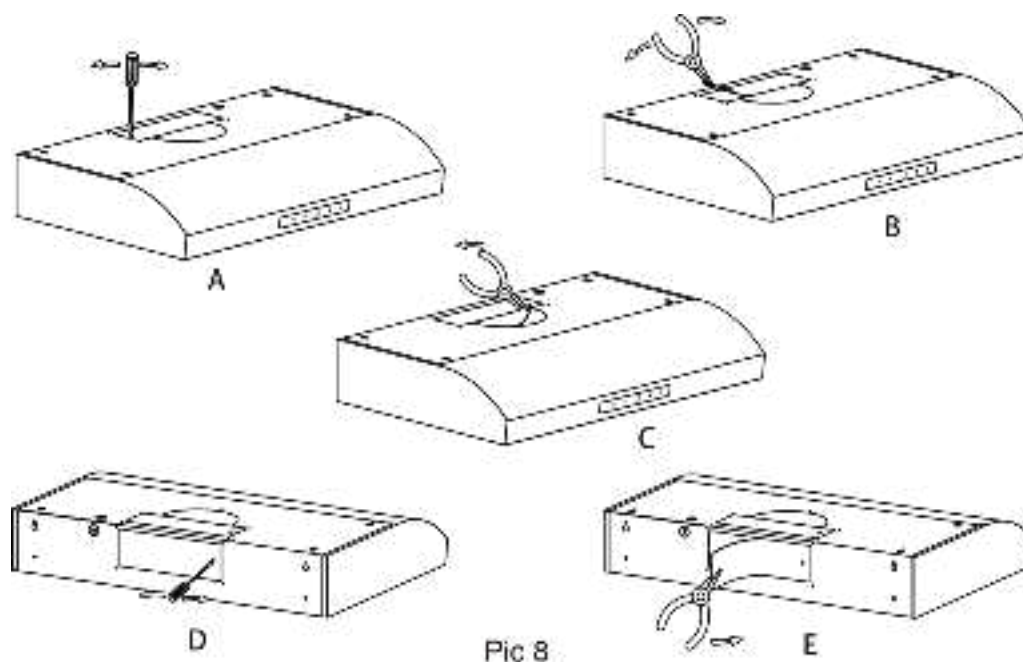


Pic 9

## Outdoor ventilation

There are 2 methods for outdoor ventilation, including 'horizontal ventilation' and 'vertical ventilation'. The round outlet and rectangle outlet on the top of hood are for vertical ventilation. The outlet at the back of hood is for vertical ventilation. Please pay attention to the ventilation method when installation.

1. Vertical ventilation(rectangle outlet): As shown in A, B of picture 8, use a flat-blade screwdriver to pry the rectangular air outlet cover(Pic A), then remove the outlet cover with pliers(Pic B), install a rectangular air outlet to allow the oil fume to escape from the top.
2. Vertical ventilation(round outlet): As shown in A, B, C of picture 8, use a flat-blade screwdriver to pry the rectangular air outlet cover(Pic A), then remove the rectangular air outlet cover and round air outlet cover with pliers(Pic B & C), install round outlet joints to allow the oil fume to escape from the top.
3. Horizontal ventilation(rectangle outlet): As shown in D, E of picture 8, use a flat-blade screwdriver to pry the rectangular air outlet cover(Pic D), then remove the outlet cover with pliers(Pic E), install a rectangular air outlet joints to allow the oil fume to escape from the back.



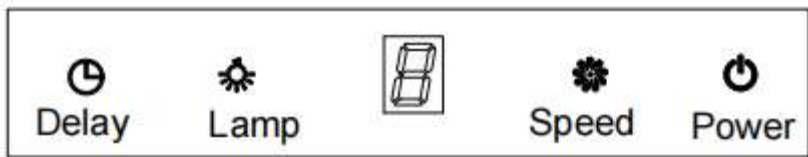
### WARNING:







- For safety reason, please use only the same size of fixing or mounting screws which are recommended in this instruction manual.
- Failure to install the screws or fixing device in accordance with these instructions may result in electrical hazards.

# Start Using Your Cooker Hood

## Touch control with LED display



 Power	Touch this button to turn on or off the range hood, and the fan will start and stop accordingly.
 Speed	Touch this button to set 1-3 speed. The LED display will indicate as 1-2-3-closed-1-2...circularly.
 Lamp	Touch this button to turn on or off the light.
 Delay	Touch this button to set the time by 5 mins, the range hood will be off after 5 mins. (Do not adjust the speed after setting the delay function, otherwise the delay function will be invalid.)



Note: The delay function on the range hood only can be setting to 5 mins at first.  
 When you connect the WIFI, you can set 1-60mins on the APP.  
 If you set 10 mins on the APP, next time when you push the delay button on the range hood, the delay time will be 10 mins.

### WIFI Connecting

Scan the QR Code with your smartphone or search it in the APP Store or Google Play to download the "QZsmart" app.



1. Make sure your range hood is on and ensure that your smartphone is connected to 2.4GHz Wifi network.  
 NOTE: This device works only on 2.4GHz Wifi network.
2. Ensure that the Bluetooth function of the phone is enabled at the same time; otherwise the device cannot be automatically searched.
3. Log in the "QZ smart" app, and add the device "kitchen appliance - range hood".  
 NOTE: If you do not have an account, you need to register a new user account.  
 You can register by phone number or e-mail address.

4. Long-press the  speed button and the  light button on the range hood at the same time.

5. Click the device to enter the operation interface. Then you can start to control the hood.



## **TROUBLESHOOTING**

<b>Fault</b>	<b>Possible Cause</b>	<b>Solution</b>
Light on, but motor does not work	Fan switch turned off	Select a fan switch position.
	Fan switch failed	Contact service center.
	Motor failed	Contact service center.
Light does not work, motor does not work	House fuses blown	Reset/Replace fuses.
	Mains power cable is loose or disconnected	Refit mains power cable to power outlet. Switch power outlet on.
Oil leakage	One way valve and the outlet are not tightly sealed	Take down the one way valve and seal with sealant.
	Leakage from the connection of chimney and cover	Take chimney down and seal.
Lights not working	Broken or faulty bulbs	Replace bulbs as per this instruction.
Insufficient suction	Too far away from the cooking surface	Refit the range hood to the correct distance. ( attention: When the range hood is located above a gas appliance, this distance shall be at least 65 cm )
The Range hood inclines	The fixing screw is not tight enough	Tighten the hanging screw and make it horizontal.



**NOTE:**

Any electrical repairs to this appliance must conform to your local, state and federal laws. Please contact the service centre if in any doubt before undertaking any of the above. Always disconnect the unit from the power source when opening the unit.

## **MAINTENANCE AND CLEANING**

**Caution:**

- Before maintenance or cleaning is carried out, the range hood should be disconnected from the mains power supply. Ensure that the range hood is switched off at the wall socket.
- External surfaces are susceptible to scratches and abrasions, so follow the cleaning instructions to ensure the best possible result is achieved without damage.

### **GENERAL**

Cleaning and maintenance should be carried out with the appliance cold especially when cleaning. Avoid leaving alkaline or acid substances (lemon juice, vinegar etc.) on the surfaces.

### **STAINLESS STEEL**

The stainless steel must be cleaned regularly (e.g. weekly) to ensure a long life expectancy. Dry with a clean soft cloth. A specialized stainless steel cleaning fluid may be used.

**NOTE:**

Ensure that wiping is done along with the grain of the stainless steel to prevent any unsightly crisscross scratching patterns from appearing.

### **CONTROL PANEL SURFACE**

The inlay control panel can be cleaned using warm soapy water. Ensure the cloth is clean and well wrung before cleaning. Use a dry soft cloth to remove any excess moisture left after cleaning.

### **Important**

Using neutral detergents and avoid using harsh cleaning chemicals, strong household detergents or products containing abrasives, as this will affect the appearance of the appliance and potentially remove any printing of artwork on the control panel and will void manufactures warranty.

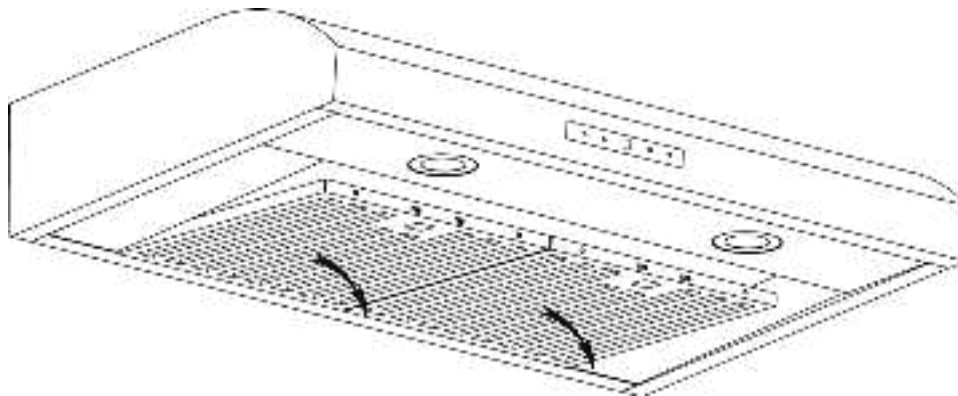
## GREASE MESH FILTERS

The filters can be cleaned by hand. Soak them for about 3 minute in water with a mild detergent and then brush it gently with a soft brush. Do not apply too much pressure so as to avoid any damage to it . (Leave to dry naturally out of direct sun light)

Filters should be washed separately to crockery and kitchen utensils. It is advisable not to use rinse aid. Please do not use abrasive detergent for it will damage the hood.




**Warning:** When cleaning the range hood, please make sure that the power is turned off. And please pay attention to the filters to fall and hurt people when removing them.



## INSTALLING GREASE MESH FILTERS

- To install filters for the following four steps:
  - Angle the filter into the slots at the back of the hood.
  - Push the button on the handle of the filter.
  - Release the handle once the filter fits into a resting position.
  - Repeat to install all filters.

## BULB REPLACEMENT

<p>Important :</p> 	<ul style="list-style-type: none"><li>✧ The bulb must be replaced by the manufacturer, its service agent or similarly qualified persons.</li><li>✧ Always switch off the electricity supply before carrying out any operations on the appliance. When handling bulb, make sure it has completely cooled down before any direct contact with hands.</li><li>✧ When handling bulbs hold with a cloth or gloves to ensure perspiration does not come in contact with the bulb as this can reduce the life of the bulb.</li></ul>
--	---

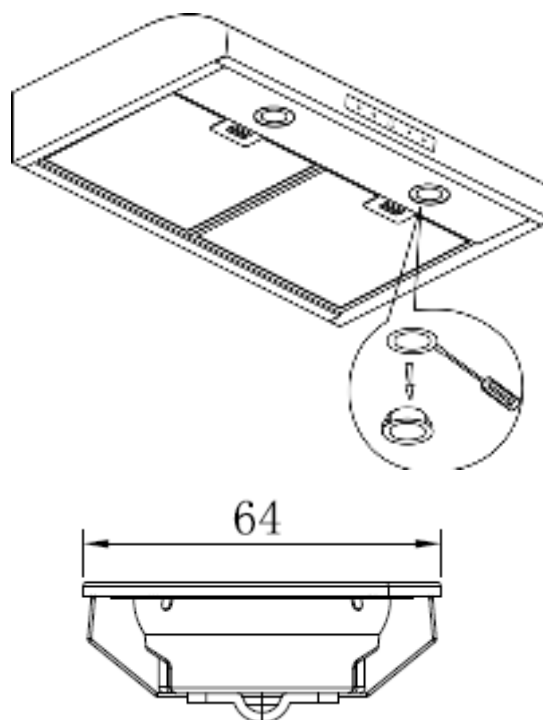
Note:

- Before changing the lights, make sure that the appliance is turned off and unplugged.
- Protect against danger when changing lights, such as wearing gloves.



## Changing the light

- Remove the grease filter.
- Use a tool or the hand to press the spring splinter of both sides of LED light to the inside, until the light is pressed out. Then slightly pull the light connecting wire out, and dismantle the terminal of the light connecting wire.
- Apply the reverse procedure to install the light back.

- ILCOS D code for this lamp is: DSR-1.5/65-S-64
- LED modules –round lamp
- Max wattage: 2×1.5W
- Voltage range: DC 12V
- Dimensions:



## ENVIRONMENTAL PROTECTION:

 	<p>This product is marked with the symbol on the selective sorting of waste electronic equipment. This means that this product must not be disposed of with household waste but must be supported by a system of selective collection in accordance with Directive 2012/19/EU. It will then be recycled or dismantled to minimize impacts on the environment, electrical and electronic products are potentially dangerous for the environment and human health due to the presence of hazardous substances. For more information, please contact your local or regional authorities.</p>
--	---

### NOTE:

The following shows how to reduce total environmental impact (e.g. energy use) of the cooking process).

- (1) Install the range hood in a proper place where there is efficient ventilation.
- (2) Clean the range hood regularly so as not to block the airway.
- (3) Remember to switch off the range hood light after cooking.
- (4) Remember to switch off the range hood after cooking.

## INFORMATION FOR DISMANTLING

Do not dismantle the appliance in a way which is not shown in the user manual. The appliance could not be dismantled by user. At the end of life, the appliance should not be disposed of with household waste. Check with your Local Authority or retainer for recycling advice.

## WARRANTY

Thank you for choosing **AOBOSI** product. We sincerely hope that you are satisfied with it. The manufacturer's warranty covers the product for a period of 12 months from the date of purchase against manufacturing faults. All warranties are automatically kept track of in our system, so there is no need to register your product.

Agent/Distributor is welcome to contact us. **Email:info@iaobosi.com.**

Any help or questions during use, please contact us via **website www.iaobosi.com, send email to info@iaobosi.com**, we will service you withi 24 hours. We suggest to provide a warranty card , a photo or a video if there's broken spare part or not working machine so that we can be much more clear about your problems and offer you the best solution.



### **AOBOSI Warranty Card**

**Item name:** \_\_\_\_\_

**Model:** \_\_\_\_\_

**Serial No:** \_\_\_\_\_

**Store name:** \_\_\_\_\_

**Purchase date:** \_\_\_\_\_

**Buyer's name:** \_\_\_\_\_

**Email:** \_\_\_\_\_

**Address:** \_\_\_\_\_

**Tel:** \_\_\_\_\_

**Please fill in the table and email it within 10 days from the date of purchase.**