

Q6L Dash Cam User Manual

V1.0

◆ Product Accessories

After opening the package, please confirm whether the driving recorder is in good condition and the accessories are complete.

- 1)Host x 1 2)Cameras x 2 3)Wired Remote Controller x 1
- 4)USB Test Cable x 1 5)Cable Ties x 1 Set
- 6)Bracket x 1 7)Memory Card x 1(Optional)
- 8)GPS Module x 1(Optional) 9) Power Cable x 1
- 10)Signal Enhancer x 1 11)Wire Clips x 1 Set

"Optional" mean it is not a standard configuration. Please refer to the product description on the platform you purchased!

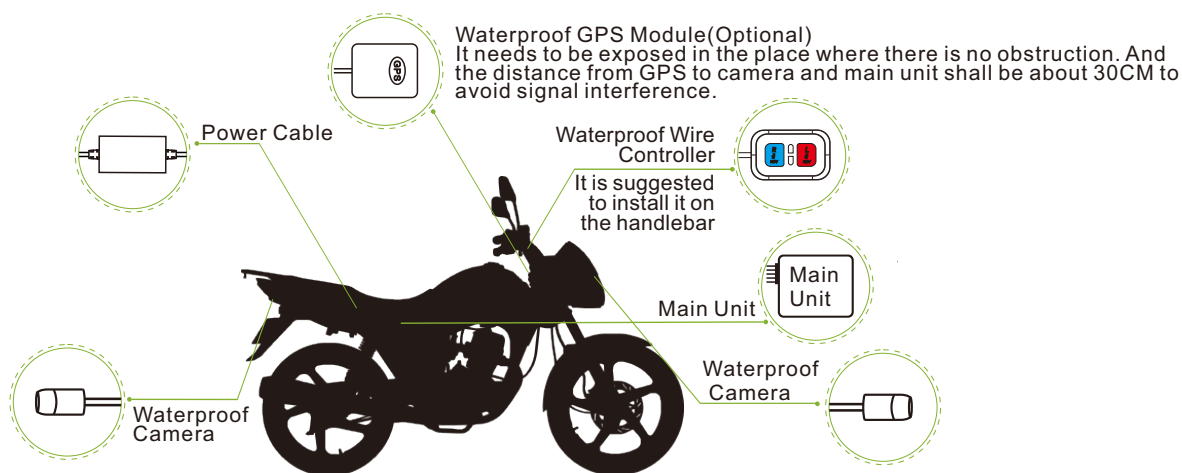
◆ Product Features

- ▶ The front and rear cameras record simultaneously;
- ▶ WiFi interconnection (available on Android and iOS);
- ▶ Loop recording;
- ▶ Emergency recording (Automatic/Manual);
- ▶ Support 8G-256G memory card;
- ▶ The recorder is powered continuously by motorcycle battery;
- ▶ Automatic power on/off.

◆ Product Specifications

Model	Q6L/Q6L-307/Q6XL
Processor	Mstar(MTK)
Video Resolution	Front: 1920 × 1080 Rear: 1920 × 1080
Vibration Sensor	3-axis G-sensor
Loop Recording	1/2/3/5 minutes
WiFi Connection	Support
Microphone	Built-in
Video Format	MOV(H.264)
Memory Card	Support 8G-256G Memory Card (Class10 and above)
Operating Temperature	15%~60% RH
Operating Humidity	-10~65 °C
Working Voltage	Power Cable 9-24V; Host: 5V2A

◆ Install Product



※ The picture and text are for reference only, please refer to the real object.

◆ How to use

1.Quick Test and Installation

Please refer to the "Quick Installation Guide".

2.Insert the Memory Card

Insert the memory card into the card slot until you hear "Da". If you want to take out the card, gently press the memory card and slowly release it after hearing "Da".

3.Power on/off

After the recorder is properly installed, when you turn on the motorcycle power with the key, the recorder turns on. Pull out the key, the recorder turns off.

⚠ Tips:

- ※ Please insert the memory card in the correct direction.
- ※ Please do not pull out or insert the card when it is turned on to avoid damaging the video file and recorder.
- ※ Please use the high speed Class10 or above genuine card.
- ※ Please format the memory card regularly to keep it in good condition.

4.Video Recording

1)Normal Recording Mode

After the motorcycle power is turned on, the recorder will automatically start recording, and the LED indicator on the remote controller will slowly flash. When the motorcycle power is off, the recorder will automatically stop recording.

Loop Recording: The recorder will save a file after recording for a period of time (the default setting is 3 minutes). When the memory card is full, the system will delete the oldest file. You can manually set the time of video recording in APP. (1/2/3/5 minutes can be set, and front and rear lens files are saved in F and R folders respectively). The normal recorded video file is named "REC-xxxx".

2)Emergency Recording Mode

G-Sensor emergency recording mode: When the motorcycle collides with other vehicles or the vibration is strong, the built-in G-Sensor will automatically activate the emergency recording mode. The LED indicator on the remote controller flashes rapidly. The emergency video file is named "GSR-xxxx". You can set the sensor sensitivity level in the menu or APP. The higher the sensitivity, the easier to trigger G-Sensor.

Manual emergency recording mode: When the recorder is recording, short press red button of wired remote controller to lock the current recorded video, and the front and rear cameras will capture a photo at the same time. The manually locked video file is named "KEY-xxxx".

! Tips:

※If the memory card is not inserted or is faulty, the video cannot be saved.
※"KEY" and "GSR" emergency video files can be saved 10 each. After more than 10, the system will automatically delete the earliest one.

5.View Video

1)View on Mobile Phone

Connect the recorder via WiFi, and view the real-time and playback video on the mobile APP (Android&iOS).

2)View on Computer

Put the memory card into the USB card reader, connect it to the available USB port on the computer, read the contents of the memory card, then select the video to play.



App download for
Android user



App download for
Apple user

Scan the QR code above to download the latest APP from Google Play and APP Store. Or you can search "WiFi Camera" on Google Play or APP Store to download and install it.

DVR WiFi Default Name: **VSYSTO_XXX**

Default password: **1234567890**

Connection Steps: ① Turn on the recorder;

② Enter the WiFi setting interface of the phone, find the corresponding WiFi name, and enter the password to connect to WiFi;

③ Open mobile APP, connect the recorder.

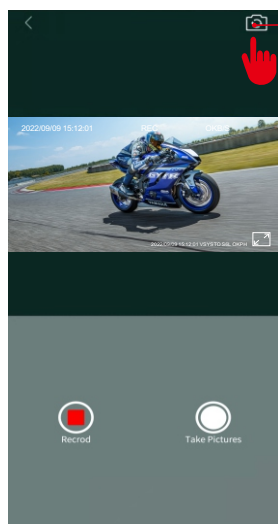
! Tips:

※If "No network connection" is displayed when connecting to WiFi, please turn off the mobile data network first, and then connect to the recorder WiFi according to the steps. If the prompt "Current WLAN is unavailable, whether to switch to another network?" appears, you must click "No".

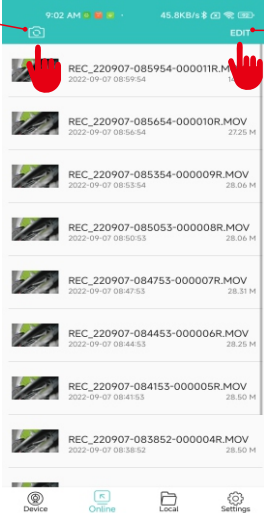
※After entering the APP, the recorder will pause recording. Please click the red recording button on the APP to start recording. After exiting the APP, the recorder will start recording in 30 seconds.

※You don't need to connect to WiFi for daily riding. Connect when you need to watch the video.

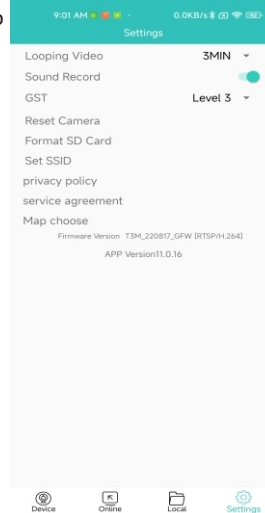
※In case of connection failure, please contact customer service.



Click it to
switch the
front and rear
cameras



Click "Edit" to
select the file
to download
or delete



APP Setting Interface

※Pause recording video and then set it; It is recommended to set Level 0 or Level 1 for GST (G-sensor sensitivity). Do not set it too high.

6.Video File Format

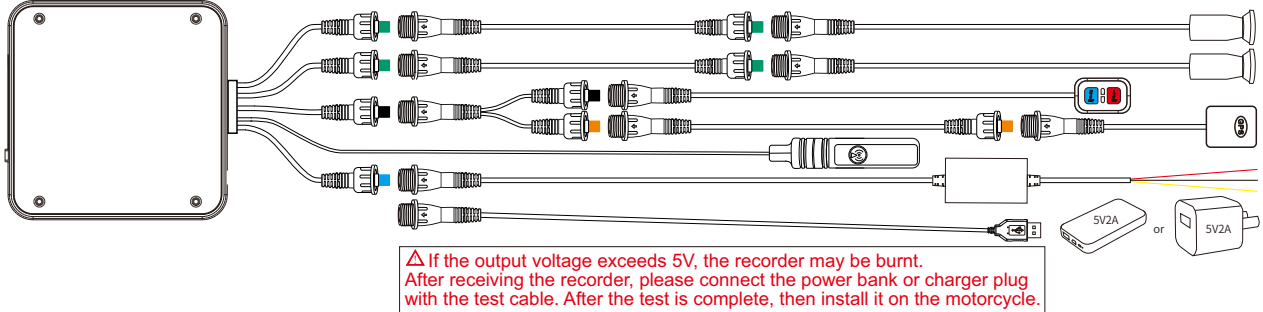
REC_220525-173957-00053F.MOV

Recording Mode Video Recording Time Number Video Format
Year-Month-Day
F-Front camera
R-Rear camera

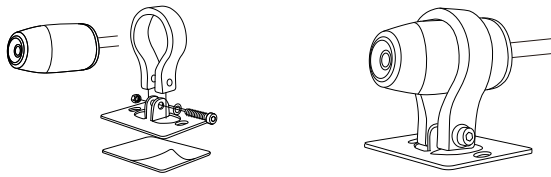
◆ Quick Installation Guide

1. Quick test

- 1) Connect the front and rear cameras to the host of the recorder.
- 2) Find the USB test cable from the accessories and connect the recorder with a 5V2A or above power bank or USB charger. After the recorder is turned on, test the function of the recorder.
- 3) After the test shows that the recorder is normal, you can install it.

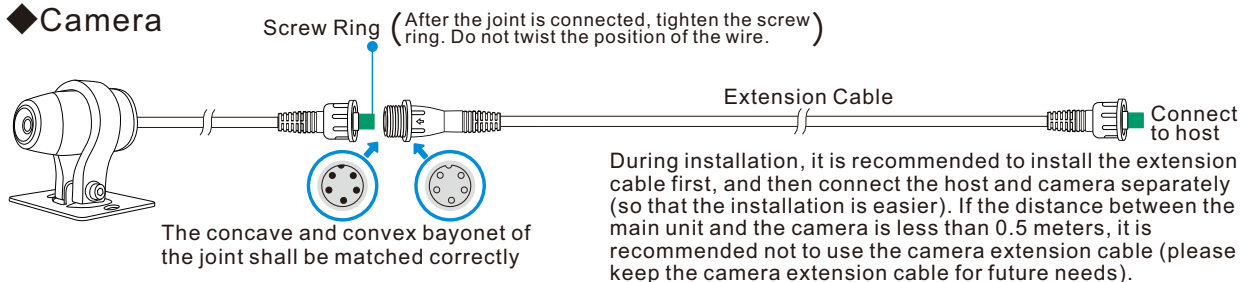


◆ Shock Absorption Camera Bracket



Install the camera body on the bracket, and tighten the screws to fix it after adjusting the proper angle.

◆ Camera

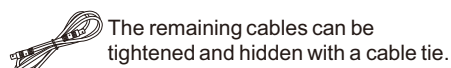
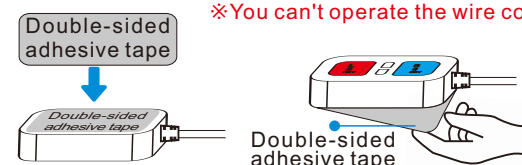


2. Installing the power cable

ACC Power Cable Connection Method: The red wire is connected to the positive pole of the motorcycle battery, the black wire is connected to the negative pole, and the yellow wire is connected to the positive pole of motorcycle key control (12V ACC power source).

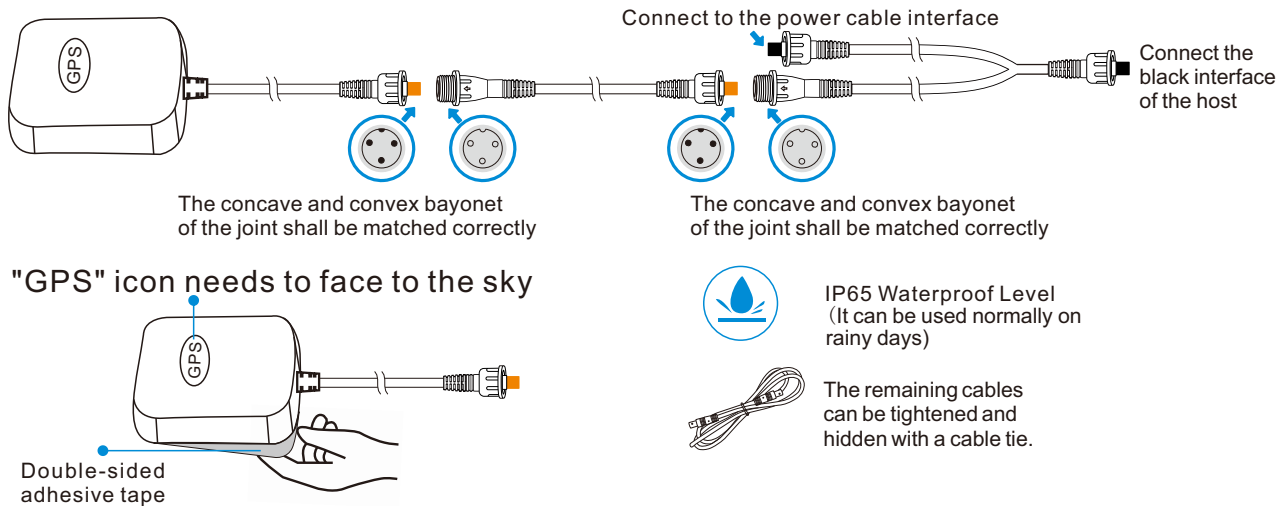
◆ Wired Remote Controller Operating Instruction

- 1) **Blue Button:**
After you insert the memory card and connect the camera, if the remote control appears abnormal vibration, indicating that the recorder may be faulty. You can stop the motor vibration by long pressing the blue button.
 - 2) **Red Button:**
Short press the red button to enter the emergency video, the motor will vibrate once, and at the same time take a picture.
Long press the red button to reset the WiFi password and name.
 - 3) **LED Indicator Light:** Slowly flashing - normal recording; Flashing fast - emergency recording; Always on: standby state; No flashing - shutdown state.
 - 4) When you find that the motor of the wire controller is continuously vibrating while using, please check whether the recorder is recording normally and whether the images of the front and rear cameras are normal. The motor of the wire controller will continue to vibrate in the following circumstances, indicating the failure of the recorder: 1. Abnormal recording occurs; 2. The camera does not display images; 3. The recorder cannot read the memory card.
- ※ You can't operate the wire controller while using the APP.



Tear off the double-sided adhesive tape and stick it on the wired remote controller. Then paste the remote controller to the proper position of the motorcycle.

◆ GPS Module(Optional)



Tear off the double-sided adhesive tape on the bottom of the GPS module and attach it to the proper position of the motorcycle
(Note: The "GPS" icon of GPS shell must face to the sky directly. There can't be anything above it, in case of the signal be shielded)

◆ Notes

- ▶ This product is an auxiliary (vehicle driving recorder) product for safe driving. Any loss caused by malfunction, information loss or using this product is irrelevant to our company.
- ▶ This product is an auxiliary device for recording external images of vehicles. Due to the different driving environment and vehicle environment, some functions will not support. The unscheduled firmware upgrade in order to improve the product will change the performance of the product, and sometimes the camera will cannot record due to the environment, so the driving images recorded in this product is for reference only. The state of memory card will also lead to camera cannot record.
- ▶ Although this product can record and save the videos of accidents, it does not guarantee that all the accident videos can be recorded. Slight collision accidents can't start the collision sensor, so the video may not be recorded in the specialized folder.
- ▶ Be sure to disconnect the power supply when inserting or pulling out memory card. For the stable use of the product, it is recommended to format the memory card twice a week.
- ▶ Generally memory card has a service life. Long-term use of memory card may cause the new data to be unable to save. In this case, it is recommended to buy a new memory card to use. Our company will not be liable for data destruction caused by the long-term use of memory card.
- ▶ Do not use high-pressure water gun or chemical solvent to clean the host, camera, power module and other parts (otherwise, no warranty will be given).
- ▶ Please do not use it in an environment with excessive dust density, so as to prevent cameras and other parts from being contaminated with dust, which will affect the video effect.
- ▶ Do not twist cables or cable connector during installation, and keep the recorder host and wires away from high-pressure areas.
- ▶ Please replace the spark plug with a spark plug with appropriate R value if there is interference in some motorcycle models.
- ▶ Do not disassemble, modify or repair this equipment by yourself. If the recorder fails due to this, we will not provide after-sales service.
- ▶ Some pictures, functions and specifications may change due to product or software upgrading. Please understand that we cannot notify you separately.
- ▶ For your safety, please do not install or operate this product while driving. Please use it within the scope permitted by law