

# Espresso Coffee Machine

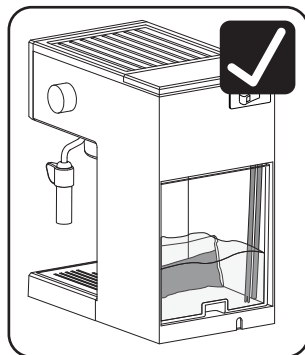
**Dualit**<sup>®</sup>  
Since 1945

## WARNING

Ensure **both** Water Tank Pipes are positioned in the water tank as shown, after the Water Tank is fitted.

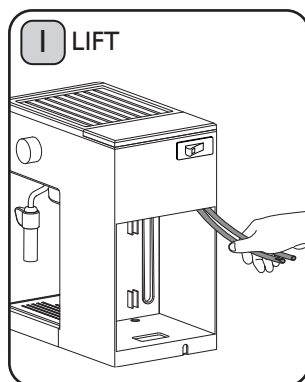
**Failure to do so will cause product to leak / not work correctly which may lead to machine and work surface damage.**

See page 11 of Instructions for details.

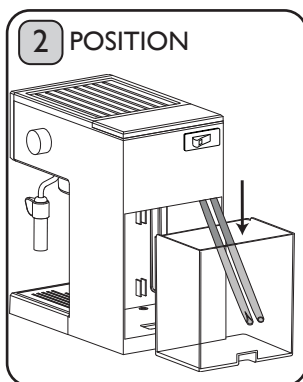


Correct Water Tank Pipe position after Water Tank inserted.

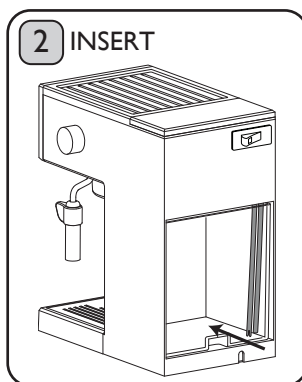
When inserting Water Tank, lift **both** pipes up, and place down into the tank, before insertion. The pipes must hang down into the water, as shown, when tank is fully inserted. If the pipes are not as shown, remove tank, pull pipes down and insert again.



Lift both Water Tank Pipes.



Position Water Tank Pipe in Water Tank.



Insert Water Tank.