

# BLUEY



## Instruction Manual

# ROAD TRIP PLAYSET



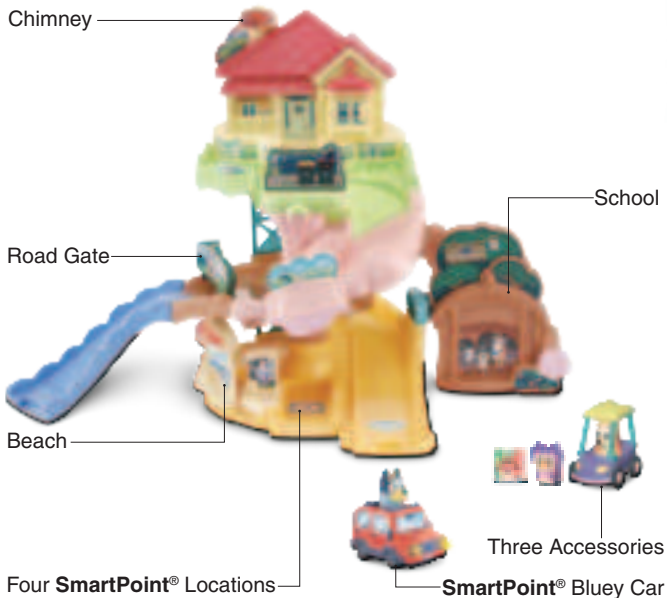
**BBC**  
**STUDIOS**

BLUEY (word mark and character logos) are trade marks of Ludo Studio Pty Limited and are used under licence. BLUEY logo © Ludo Studio Pty Limited 2018. Licensed by BBC Studios. BBC is a trade mark of the British Broadcasting Corporation and is used under licence. BBC logo © BBC 1996

# INTRODUCTION

Thank you for purchasing the **VTech® Bluey Road Trip Playset**.

Hop in the car with Bluey and take a wonderful ride around town! Push the chimney to open the door and launch the vehicle from the Heeler House to sneak past The Terriers and explore Bluey's school or the beach. Interactive SmartPoint® locations activate fun songs, sounds and phrases as your little one cruises around town with Bluey!



# INCLUDED IN THIS PACKAGE



One **SmartPoint®**  
Bluey Car



One Dustbin Plate



Two Track Supports



One Flower



One Beach Wall



One Uncle Stripe Plate



One Ibis Plate



One Spiral Base 1



One Spiral Ramp 2



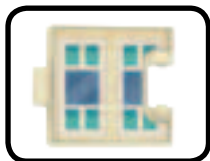
One Spiral Ramp 3



One Top Level Platform 4



One School Wall  
Support



One Window Door



One School Wall



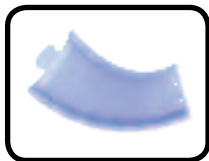
One Heeler House



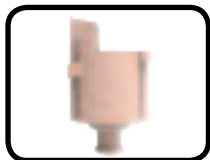
One **SmartPoint®**  
Launcher Track



One Road Gate



One Slide Ramp



One Bracket 1



One Bracket 2



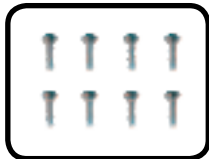
One Bingo Pedal Car



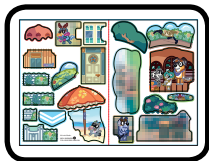
One Pizza Box



One Chattermax Top



Eight Screws



Sticker Sheet

- One Quick Start Guide

**WARNING:**

All packing materials such as tape, plastic sheets, packaging locks, removable tags, cable ties, cords and packaging screws are not part of this toy, and should be discarded for your child's safety.

**NOTE:**

Please save this Instruction Manual as it contains important information.

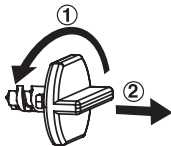
**ATTENTION :**

Pour la sécurité de votre enfant, débarrassez-vous de tous les produits d'emballage tels que rubans adhésifs, feuilles de plastique, attaches, étiquettes, cordons et vis d'emballage. Ils ne font pas partie du jouet.

**NOTE :**

Il est conseillé de sauvegarder ce manuel d'utilisation car il comporte des informations importantes.

**Unlock the Packaging Locks**



- ① Turn the packaging locks counterclockwise several times.
- ② Pull out and discard the packaging locks.



## CAUTION:

### **Adult assembly required.**

This package contains small screws. For your child's safety, do not let your child play with the toy until it is fully assembled.



## ATTENTION :

### **Ce jouet doit être assemblé par un adulte.**

Ce jouet contient des petites vis. Pour la sécurité de votre enfant, ne pas le laisser jouer avec le jouet tant que ce dernier n'est pas complètement assemblé par un adulte.

## GETTING STARTED



## WARNING:

Adult assembly required for battery installation.

Keep batteries out of reach of children.



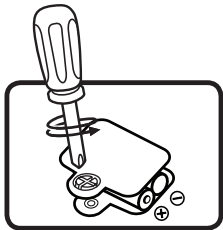
## ATTENTION :

Les piles ou accumulateurs doivent être installés par un adulte.

Tenir les piles ou accumulateurs hors de portée des enfants.

## Battery Removal and Installation

1. Make sure the unit is turned **Off**.
2. Find the battery cover located on the bottom of the unit. Use a screwdriver to loosen the screw and then open the battery cover.
3. Remove old batteries by pulling up on one end of each battery.



4. Install 2 new AAA (AM-4/LR03) batteries following the diagram inside the battery box (for best performance, alkaline batteries or fully charged Ni-MH rechargeable batteries are recommended).
5. Replace the battery cover and tighten the screw to secure.

## **IMPORTANT: BATTERY INFORMATION**

- Insert batteries with the correct polarity (+ and -).
- Do not mix old and new batteries.
- Do not mix alkaline, standard (carbon-zinc) or rechargeable batteries.
- Only batteries of the same or equivalent type as recommended are to be used.
- Do not short-circuit the supply terminals.
- Remove batteries during long periods of non-use.
- Remove exhausted batteries from the toy.
- Dispose of batteries safely. Do not dispose of batteries in fire.

## **RECHARGEABLE BATTERIES**

- Remove rechargeable batteries (if removable) from the toy before charging.
- Rechargeable batteries are only to be charged under adult supervision.
- Do not charge non-rechargeable batteries.

## **IMPORTANT : INFORMATIONS CONCERNANT LES PILES**

Les piles fournies avec le produit permettent de tester le jouet en magasin mais ne sont pas des piles longue durée.

- Mettre en place les piles ou les accumulateurs en respectant les polarités + et -.
- Ne pas mélanger des piles ou des accumulateurs neufs avec des usagés
- Ne pas mélanger différents types de piles : alcalines, zinc-carbone et rechargeables.
- Seules des piles du type recommandé doivent être utilisées.
- Ne pas mettre les bornes d'une pile ou d'un accumulateur en court-circuit (en reliant directement le + et le -).
- Retirer les piles ou les accumulateurs en cas de non-utilisation prolongée.
- Enlever les piles ou les accumulateurs usagés du jouet.
- Ne les jeter ni au feu ni dans la nature.

### **PILES RECHARGEABLES**

- Enlever, lorsque c'est possible, les accumulateurs du jouet pour les recharger.
- Les accumulateurs ne doivent être chargés que sous la surveillance d'un adulte.
- Ne pas tenter de recharger des piles non rechargeables.

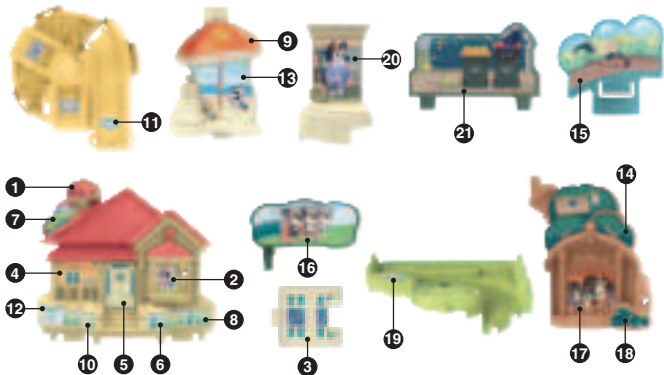
### **Note:**

If the unit repeatedly powers down while playing or the light fades out, we suggest changing the batteries.



# LABEL APPLICATION

Please securely stick the labels to the playset as indicated below:



# INSTRUCTIONS

With the **Bluey Road Trip Playset**, safety comes first. To ensure your child's safety, adult assembly is required.

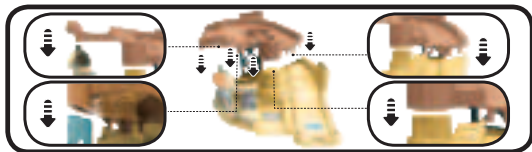
1. Locate the **Spiral Base 1** and insert one of the **Track Supports**, as shown below.



2. Insert the **Beach Wall** and the **Uncle Stripe Plate** into the **Spiral Base 1**.



3. Place **Spiral Ramp 2** onto the center pole of **Spiral Base 1**. Then, adjust **Spiral Ramp 2** so the slots fit snugly onto the **Beach Wall**, **Spiral Base 1**, and **Track Support**, as shown below.



4. Fasten the **School Wall Support** to the **School Wall** with two **Screws**, then insert into the slot on **Spiral Base 1**, and insert the **Flower** into the **School Wall**, as shown below.



5. Insert **Bracket 1** into **Spiral Ramp 3** and fasten with three **Screws**.



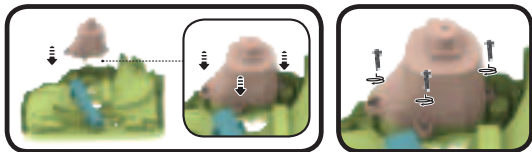
6. Insert the **Ibis Plate** into **Spiral Ramp 3**. You will hear a “click” sound to indicate the pieces are secure.



7. Place **Spiral Ramp 3** over the center pole of **Spiral Ramp 2**. Then, adjust **Spiral Ramp 3** so that the slots on the bottom fit snugly into the **School Wall** and the **Beach Wall**, as shown below. You will hear a “click” sound to indicate the pieces are secure.



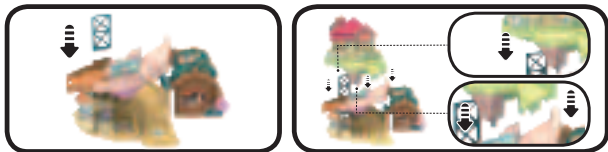
8. Fasten **Bracket 2** to the **Top Level Platform 4** with three **Screws**, as shown below.



9. Connect the **Heeler House** to the **Top Level Platform 4**. You will hear a “click” sound to indicate the pieces are secure.



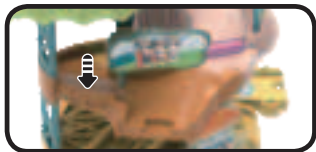
10. Insert the remaining **Track Support** into the slot on **Spiral Ramp 2**. Then, connect the bottom slots of the **Top Level Platform 4** to the **Track Support** and **Spiral Ramp 3**, as shown below. You will hear a “click” sound to indicate the pieces are secure.



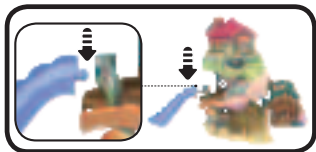
11. Insert the **SmartPoint® Launcher Track**, the **Dustbin Plate** and the **Window Door** into the **Top Level Platform 4**, as shown below.



12. Insert the **Road Gate** into the slot on **Spiral Ramp 2**, as shown below. You will hear a “click” sound to indicate the pieces are secure.



13. Connect the **Slide Ramp** to **Spiral Ramp 2**, as shown below.



Once you've completed the above steps, you are ready to play! You can connect these pieces to other tracks (each sold separately).

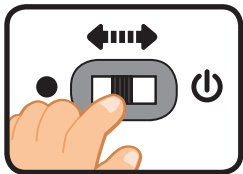


# PRODUCT FEATURES

## Bluey Car

### 1. On/Off Switch

To turn the unit **On**, slide the **On/Off Switch** to the **On** ☺ position. To turn the unit **Off**, slide the **On/Off Switch** to the **Off** ● position.



### 2. Automatic Shut-Off

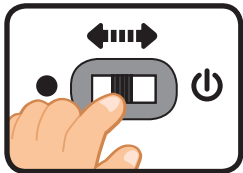
To preserve battery life, the **Bluey Car** will automatically power down after approximately 60 seconds without input. The unit can be turned **On** again by pressing the Bluey Character Button, pushing the **Bluey Car** quickly or triggering a **SmartPoint®** location.

**NOTE:** This vehicle is in Try-Me mode in the packaging and can not be turned on by pushing the **Bluey Car** quickly or triggering a **SmartPoint®** location. After opening the package, turn the **Bluey Car Off** and **On** again to proceed with normal play. If the unit repeatedly powers down while playing, we suggest changing the batteries.

## MODES

### Bluey Car

1. Slide the **On/Off Switch On**. You will hear a song, fun phrases and sounds. The lights will flash with the sounds.



2. Press Bluey Character Button to hear fun sounds, music and phrases. The lights will flash with the sounds. While a melody is playing, push the **Bluey Car** to add in fun sounds on top of the melody.



3. Push the **Bluey Car** quickly to hear fun sounds. The lights will flash with the sounds.



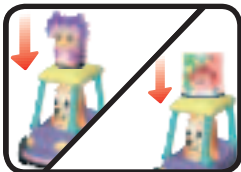
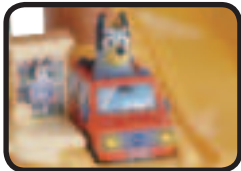
4. For added fun, the **Bluey Car** interacts with the **Bluey Road Trip Playset**. Simply put the **Bluey Car** on one of the playset's four **SmartPoint®** locations to see the **Bluey Car's** lights flash and hear fun sounds, short tunes and phrases. The **Bluey Car** even interacts with other tracks (each sold separately).



# MODES

## Bluey Road Trip Playset

1. Place the **Bluey Car** or any **SmartPoint®** vehicle (each sold separately) on any of the playset's four **SmartPoint®** locations to trigger fun sounds, songs or phrases.
2. Put the **Bluey Car** and **Bingo Pedal Car** on the **SmartPoint® Launcher Track** on the **Top Platform**, then press the **Chimney** to launch the **Bluey Car** down the **Spiral Ramp**.
3. Move the **Road Gate** side to side to let the **Bluey Car** and **Bingo Pedal Car** pass through.
4. Attach the **Pizza Box** and **Chattermax Top** to the **Bingo Pedal Car**.





# MELODY LIST

1. Theme Tune
2. Takeaway
3. Road Trip
4. Beach
5. Camping
6. Markets

## SONGS

### Song 1

For the golden corn  
And the apples on the trees,  
For the golden butter  
And the honey from the bees,  
For fruits and nuts and berries.  
That grow beside the way  
We praise our loving Mother Earth,  
And thank her every day.

## CARE & MAINTENANCE

1. Keep the unit clean by wiping it with a slightly damp cloth.
2. Keep the unit out of direct sunlight and away from any direct heat sources.
3. Remove the batteries if the unit will not be in use for an extended period of time.
4. Do not drop the unit on hard surfaces and do not expose the unit to moisture or water.

## TROUBLESHOOTING

If for some reason the unit stops working or malfunctions, please follow these steps:

1. Turn the unit **Off**.
2. Interrupt the power supply by removing the batteries.
3. Let the unit stand for a few minutes, then replace the batteries.
4. Turn the unit **On**. The unit should now be ready to use again.
5. If the unit still does not work, install a new set of batteries.

### IMPORTANT NOTE:

If the problem persists, please contact our **Consumer Services Department** at **1-800-521-2010** in the U.S. or **1-877-352-8697** in Canada, or by going to our website at **vtechkids.com** and filling out our **Contact Us** form located under the **Customer Support** link. Creating and developing **VTech®** products is accompanied by a responsibility that we take very seriously. We make every effort to ensure the accuracy of the information, which forms the value of our products. However, errors sometimes can occur. It is important for you to know that we stand behind our products and encourage you to contact us with any problems and/or suggestions you might have. A service representative will be happy to help you.

### NOTE

This equipment has been tested and found to comply with the limits for a Class B digital device, pursuant to Part 15 of the FCC Rules. These limits are designed to provide reasonable protection against harmful interference in a residential installation. This equipment generates, uses and can radiate radio frequency energy and, if not installed and used in accordance with the instructions, may cause harmful interference to radio communications. However, there is no guarantee that interference will not occur in a particular installation. If this equipment does cause harmful interference to radio or television reception, which can be determined by turning the equipment off and on, the user is encouraged to try to correct the interference by one or more of the following measures:

- Reorient or relocate the receiving antenna.
- Increase the separation between the equipment and receiver.
- Connect the equipment into an outlet on a circuit different from that to which the receiver is connected.
- Consult the dealer or an experienced radio/TV technician for help.

**Caution:** Changes or modifications not expressly approved by the party responsible for compliance could void the user's authority to operate the equipment.

### **Supplier's Declaration of Conformity**

47 CFR § 2.1077 Compliance Information

Trade Name: VTech®  
Model: 5845  
Product Name: Bluey Road Trip Playset  
Responsible Party: VTech Electronics North America, L.L.C.  
Address: 1156 W. Shure Drive, Suite 200  
Arlington Heights, IL 60004  
Website: vtechkids.com

THIS DEVICE COMPLIES WITH PART 15 OF THE FCC RULES. OPERATION IS SUBJECT TO THE FOLLOWING TWO CONDITIONS: (1) THIS DEVICE MAY NOT CAUSE HARMFUL INTERFERENCE, AND (2) THIS DEVICE MUST ACCEPT ANY INTERFERENCE RECEIVED, INCLUDING INTERFERENCE THAT MAY CAUSE UNDESIRED OPERATION.  
CAN ICES(B)/NMB(B)

# CONSUMER SERVICES

Creating and developing **VTech®** products is accompanied by a responsibility that we at **VTech®** take very seriously. We make every effort to ensure the accuracy of the information, which forms the value of our products. However, errors sometimes can occur. It is important for you to know that we stand behind our products and encourage you to call our Consumer Services Department with any problems and/or suggestions that you might have. A service representative will be happy to help you.

## **Australian Customers:**

Phone: 1800 862 155

Website: [support.vtech.com.au](http://support.vtech.com.au)

## **NZ Customers:**

Phone: 0800 400 785

Website: [support.vtech.com.au](http://support.vtech.com.au)

# PRODUCT WARRANTY/ CONSUMER GUARANTEES

## **Australian Customers:**

**VTECH ELECTRONICS (AUSTRALIA) PTY LIMITED – CONSUMER GUARANTEES**

Under the Australian Consumer Law, a number of consumer guarantees apply to goods and services supplied by VTech Electronics (Australia) Pty Limited. Please refer to [vtech.com.au/consumerguarantees](http://vtech.com.au/consumerguarantees) for further information.

**Visit our website for more  
information about our products,  
downloads, resources and more.**

***vtechkids.com***

***vtechkids.ca***

**Read our complete warranty policy online at  
*vtechkids.com/warranty*  
*vtechkids.ca/warranty***

