

# SPORTS AFIELD®

*E s t a b l i s h e d 1 8 8 7*

## INSTRUCTION MANUAL FOR SA-RTA-8

### IMPORTANT:

Please read this information and follow all safety rules carefully before operating your gun cabinet. Failure to do so will void your warranty.

#### **WARNING**



#### **Tip Over Hazard**

A child or adult can tip the safe and be killed or seriously injured.

Failure to secure the safe as shown in these instructions can result in death or serious injury to children and adults.

Children should not play with or around the safe at any time.

# TABLE OF CONTENTS

---

IMPORTANT INFORMATION .....	2
1 REGISTRATION .....	3
2 UNDERSTANDING YOUR CABINET .....	4
3 UNBOXING .....	4
4 INSPECTION .....	4
5 PROPER PLACEMENT AND MOVING OF CABINET .....	5
6 KEEPING YOUR CABINET DRY .....	5
7 ASSEMBLING YOUR CABINET .....	6
8 INSTALLING CABINET DOOR .....	8
9 GUN REST INSTALLATION .....	9
10 OPENING YOUR CABINET .....	10
11 INSTALLING PROTECTIVE FOAM .....	10
12 SECURING YOUR CABINET .....	11
13 LOADING YOUR CABINET .....	12
14 MAINTAINING HINGES AND INTERNAL MECHANISM .....	12

# DISCLAIMER - READ BEFORE CABINET SETUP

---

**PLEASE READ THIS INFORMATION CAREFULLY BEFORE OPERATING YOUR SPORTS AFIELD CABINET.**

**DO NOT LOCK THIS MANUAL OR THE OVERRIDE ACCESS KEYS IN YOUR CABINET.**

- Thank you for choosing a Sports Afield Cabinet to protect your valuables. We are committed to securing, organizing and protecting your most important documents, valuables and keepsakes.
- Your cabinet is built to last a lifetime. However, please understand that the locking mechanism has precision parts. If you experience ANY difficulty opening or closing your cabinet, **DO NOT FORCE THE CABINET OPEN**. Doing so may jam the components in the lock, which will require a safe technician to unlock your safe. This causes an inconvenience for you, and may lead to a claim denial.
- If you experience problems or challenges with your cabinet please contact us. Many issues can be quickly resolved without the product being returned.

**Contact Customer Service at [cs@saproducts.com](mailto:cs@saproducts.com) or (888) 792-4264**

## SAFETY

---

- Cabinet bodies and doors are extremely heavy thus SA Products Requires a minimum of two people to ensure stability of the cabinet during installation. Always ensure proper installation, as laid out in this manual, and do not open the door with the cabinet on an uneven or unstable floor. Ignoring this could result in serious injury or death.
- Keep all spare keys, away from children, and separate from your cabinet. You will need your proof of purchase to obtain technical assistance and additional replacement keys.

## FIREARM STORAGE

---

- If you choose to utilize this cabinet to store a firearm always follow proper firearm and local laws when storing a firearm.
- SA Consumer Products strongly recommends that you do not store loaded firearms.
- Always follow the firearm safety rules set out by the firearm's manufacturer.
- A Sports Afield Safe or any other firearm storage device cannot take the place of other safety procedures including advising children of the dangers of firearms.
- SA Consumer Products and its distributors of the Sports Afield Cabinets do not recommend, suggest, advise, promote, or otherwise condone the ownership or use of firearms. We believe the decision to own or use a firearm is a serious decision and should only be made by an adult who has carefully considered the risks and benefits of such a decision.

# 1. REGISTRATION

---

Please ensure that you register your cabinet by visiting our website. Locate the “contact’ button located on the top header on the home page. Select registration from the drop down menu.

**www.saproducts.com**

By registering your Sports Afield Cabinet we will be able to expedite and address any problems or challenges you may have which would otherwise require a notary letter and proof of payment.

## REGISTRATION INFORMATION

---

The information you record onto this page will be required in the event you cannot access the contents of your Sports Afield Cabinet. Please fill out all the required information below and retain for your records and safe keeping.

PLEASE HAVE THIS INFORMATION READY PRIOR TO CALLING FOR TECHNICAL ASSISTANCE AT:

**Contact Customer Service at [cs@saproducts.com](mailto:cs@saproducts.com) or (888) 792-4264**

PURCHASE DATE: \_\_\_\_\_

PURCHASE PRICE (BEFORE TAX): \_\_\_\_\_

MODEL NUMBER: \_\_\_\_\_

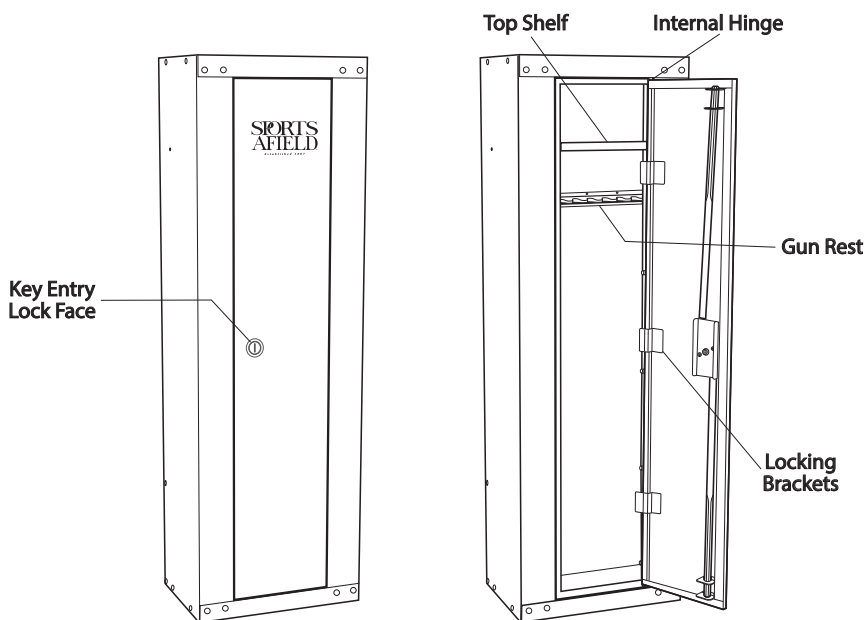
SERIAL NUMBER: \_\_\_\_\_

RETAILER PURCHASED AT: \_\_\_\_\_

KEY NUMBER (IF APPLICABLE): \_\_\_\_\_

## 2. UNDERSTANDING YOUR CABINET

---



## 3. UNBOXING

---

**WARNING: CABINETS ARE HEAVY AND CAN BE UNSTABLE ON UNEVEN GROUND. PLEASE ENSURE EXTRA CAUTION WHEN DEALING WITH OR MOVING UNSECURED CABINETS. WHILE UNBOXING BE SURE TO HAVE A SECOND PERSON HOLD AND STABILIZE THE CABINET TO KEEP IT FROM TIPPING, CAUSING INJURY, AND/OR DAMAGE TO THE CABINET AND SURROUNDING STRUCTURES.**

- Remove the packaging. Carefully remove the box, ensuring not to damage the cabinet and/or injure yourself. You will want to have someone stabilize the cabinet when removing the cardboard and other packing material from underneath the cabinet.

## 4. INSPECTION

---

- Make sure to inspect your cabinet for shipping damage before accepting delivery. If you find any damage, please contact the delivery company (or carrier) immediately.
- Any damage not noted upon delivery must be reported within fifteen (15) days or there will be no recourse. Any noted damage at the time of delivery must be resolved with the delivery company and/or retailer. Shipping damage is not warrantable by SA Consumer Products.

## 5. PROPER PLACEMENT AND MOVING OF CABINET

---

**WARNING: CABINETS ARE VERY HEAVY AND AWKWARD TO HANDLE. PLEASE USE THE UTMOST CARE IN MOVING THE CABINET. UTILIZING A TRAINED PROFESSIONAL WITH PROPER MOVING EQUIPMENT IS HIGHLY RECOMMENDED.**

The location of the gun cabinet is very important and the utmost care should be taken during this consideration.

1. To maximize burglary protection and stability, securing the cabinet to the floor is recommended.
2. SA Consumer Products recommends that you store your cabinet in a closet, office, basement, bedroom or any other location that is convenient for you but out of direct line of sight from prying eyes. The location of the gun cabinet is very important.

Using a dolly capable of supporting the size and weight of your cabinet, move the cabinet to your desired location. Please take all necessary precautions to protect and prevent any damage to your flooring.

**HELPFUL: TO DETERMINE WHETHER YOUR CABINET WILL MAKE IT THROUGH DOORWAYS, STAIRS, OR CORNERS, TAKE THE EMPTY CABINET BOX AND SEE IF IT WILL FIT ALL THE WAY THROUGH TO ITS FINAL LOCATION.**

1. The cabinet should be installed adjacent to a side wall with minimal space on either side of the cabinet. Wherever possible, the cabinet should be flat against the wall and floor. Remove the baseboard and/or wall trim if necessary.
2. Always ensure the cabinet is in an isolated and dry area. Never place the cabinet in direct contact with a wet floor. When installing your cabinet on a concrete floor, use of a moisture/protective barrier is highly recommended. Failure to do so, or exposing the cabinet to chemicals or other adverse environments, may void the warranty.
3. If your cabinet seems unlevel, you may need to shim the bottom of the cabinet to prevent the door from swinging open too quickly, or closing on itself.

## 6. KEEPING YOUR CABINET DRY

---

We recommend placing a moisture/protective barrier between your cabinet and concrete floor to prevent any moisture, mildew and rust damage the cabinet. Installing your cabinet in a place with climate control (heat in the winter and cooling in the summer) is highly recommended. In areas of high humidity or frequent temperature fluctuations (garages) it is recommend to take appropriate precautions to ward against moisture damage. We strongly encourage the use of an internal dehumidifier and/or desiccants to protect your contents from rust or mildew. Internal dehumidifiers should not be in direct contact with the side or back walls.

# 7. ASSEMBLING YOUR CABINET

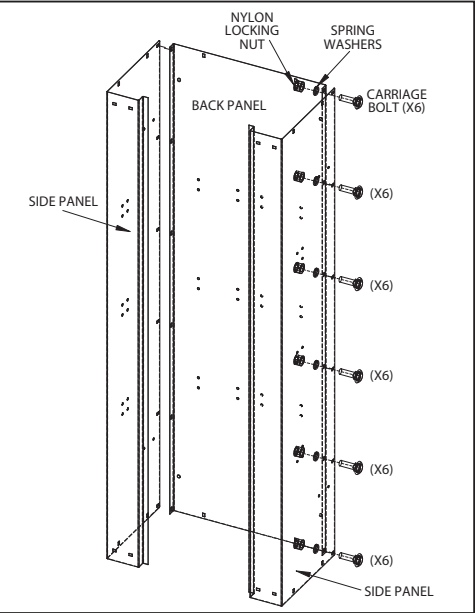
**HELPFUL: WHEN ASSEMBLING THE CABINET BODY, ONLY HAND TIGHTEN THE BOLTS UNTIL ALL THE PARTS ARE ASSEMBLED. THIS WILL MAKE IT EASY TO ALIGN ALL THE HOLES.**

1. Assemble the side panels to the Back Panel. For easy assembly, stand the panels up as shown. Assemble each side with (6) Carriage Bolts, Lock Washers and Nylon Locking Nuts.

Hand tighten the bolts at this time. (See Figure 1) For the entire assembly of the cabinet body, the heads of all the Carriage Bolts will be on the outside of the cabinet.

Tighten the interior nylon locking nuts with a with a 7/16" (10mm) Socket wrench. Hold the head of the Carriage Bolt in the square holes of the cabinet while tightening the bolts. Do not over tighten these bolts.

Step 1

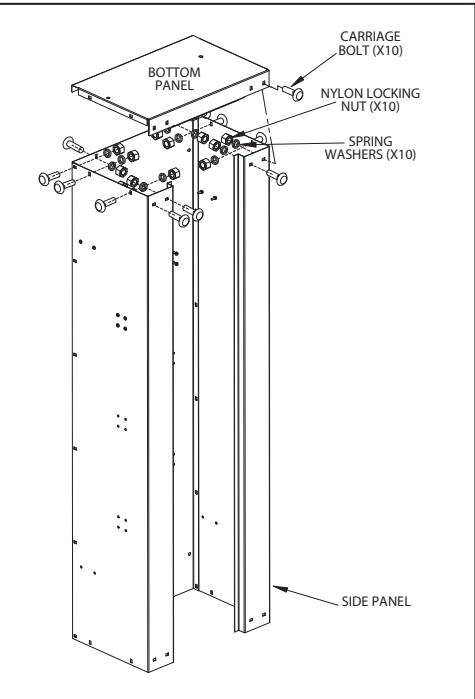


2. Keep the assembly standing up as shown. Locate the Bottom Panel (the one with 2 holes in the center of the panel) and place it on the sides and back assembly. The front and back flanges of this panel must be on the outside of the cabinet. (See Figure 2) The side flanges will be on the inside of the cabinet.

Assemble with (10) Carriage Bolts, Lock Washers and Nylon Locking Nuts. Hand tighten the bolts at this time.

Now turn the entire unit over to prepare for assembling the shelves and top panel.

Step 2

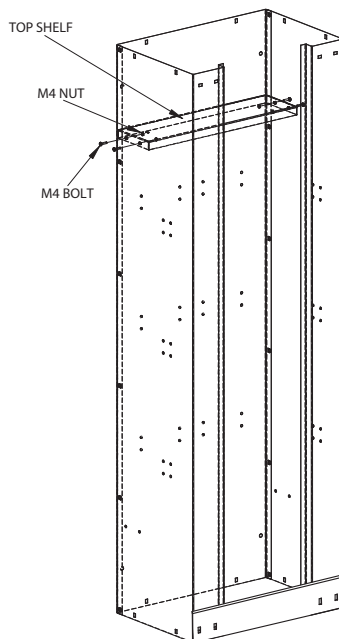


## 7. ASSEMBLING YOUR CABINET (continued)

3. Assemble the optional storage shelf at this time. It will be easier to align the holes without the top on.

Use the top set of holes in the side panels and assemble the shelf with (4) machine screws and locking nuts. (See Figure 3)

Step 3

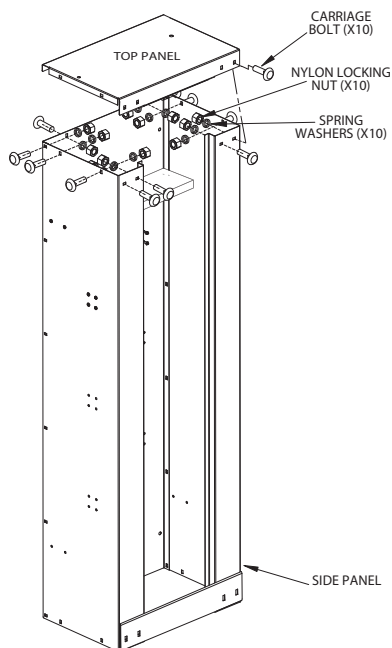


4. Assemble the top panel. This will assemble the same as the bottom panel.

With the front and back flanges on the outside of the cabinet and the side flanges on the inside of the cabinet, assemble with (10) carriage bolts, lock washers and nylon locking nuts. (See figure 4)

Now tighten all the fasteners in the cabinet body. **Do not over tighten.**

Step 4

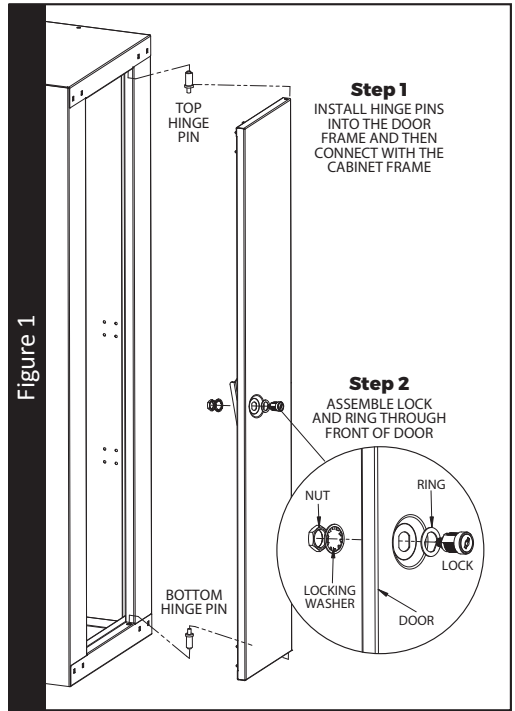




## 8. INSTALLING CABINET DOOR

1. First, insert both hinge pins into the cabinet. Then place the pin hole located on the bottom of the door onto the bottom hinge pin. Next, tilt the door up while depressing the upper hinge pin. Align the hinge pin into the door hinge pin hole and snap into place.
2. Assemble the Lock and Ring through the front of the Door. Secure the Lock with the Locking Washer and Nut.

Figure 1



3. **Before assembling the lock bars remove the key from the lock.**

To assemble the 3 Point Locking Bar, first position the center plate horizontally with the indented formation in the one end pointing to the outside of the Door.

Slide the Lock Bars through the slots in the Top and Bottom Door Brackets.

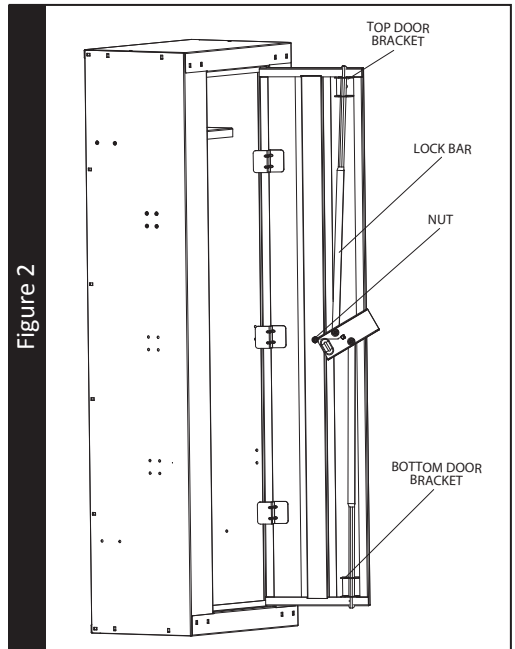
Position the square hole in the center plate over the Lock while the Center Plate is still in the horizontal position.

Secure the Center Plate to the Lock with the Nut.

Insert the key into the Lock and try the locking mechanism. Lubricate the tips of the Lock Bars if necessary.

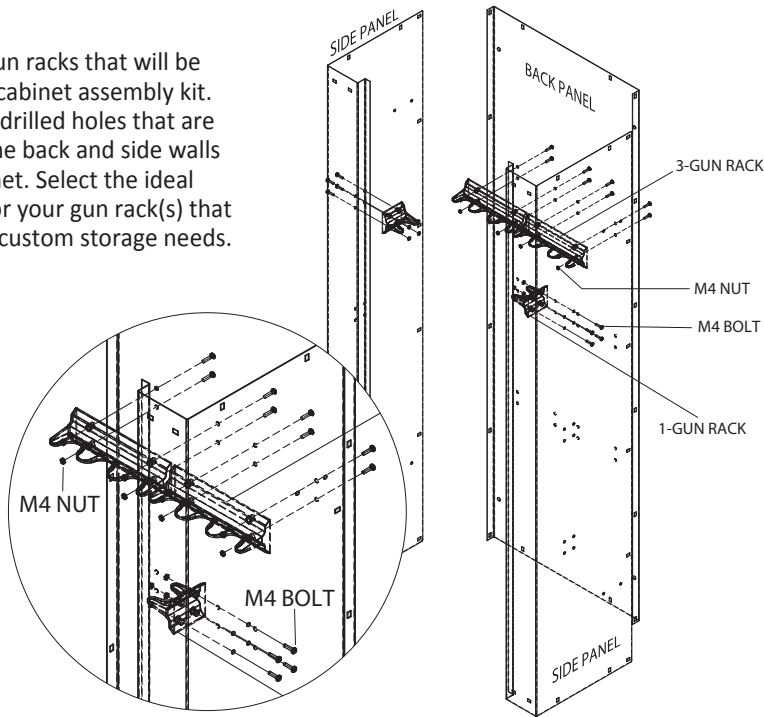
Please note that the key only comes out of the lock only when it is in the locked position.

Figure 2

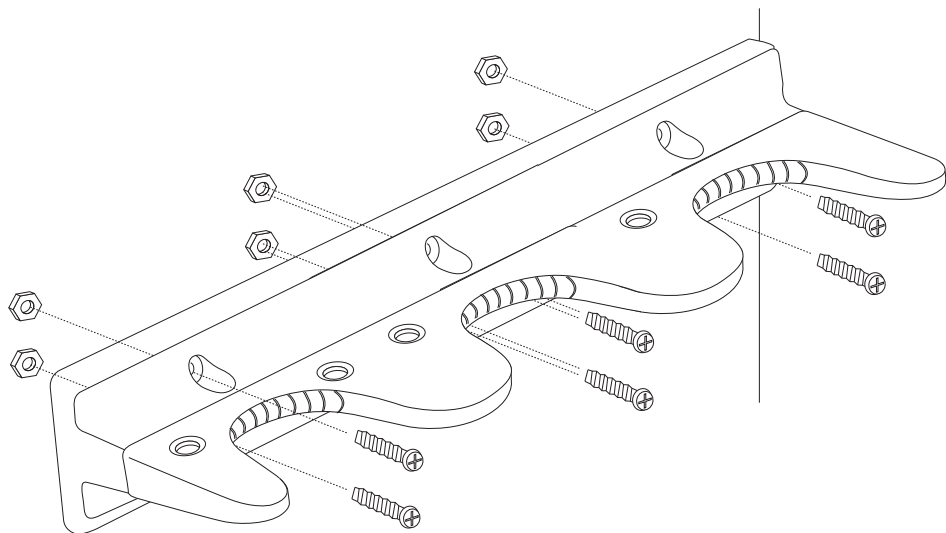


# 9. GUN REST INSTALLATION

1. Locate the gun racks that will be part of your cabinet assembly kit. Find the pre-drilled holes that are located on the back and side walls of your cabinet. Select the ideal location(s) for your gun rack(s) that best fit your custom storage needs.



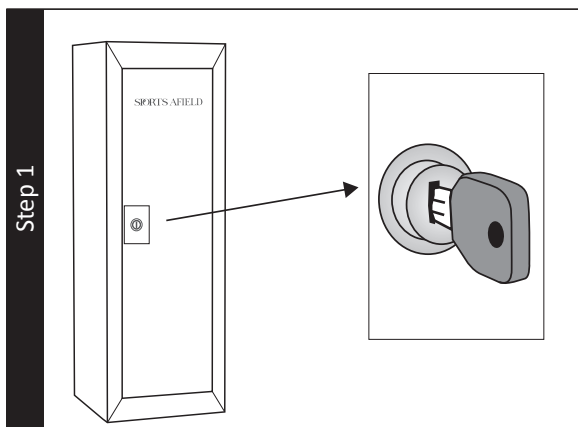
2. Insert bolts, as shown below, into the two pre-drilled holes in your gun rack, through the metal wall of the interior of your cabinet to secure the gun rack in place.



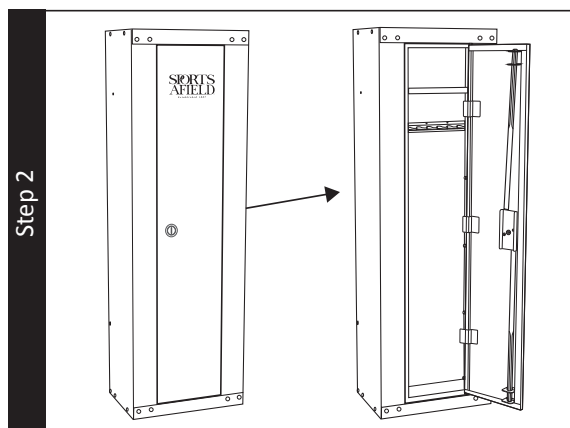
## 10. OPENING YOUR CABINET

1. Locate the two keys in the box. The second key will serve as a backup key. Please do not store this inside of the cabinet door.

Locate the key slot on the front of the cabinet door.

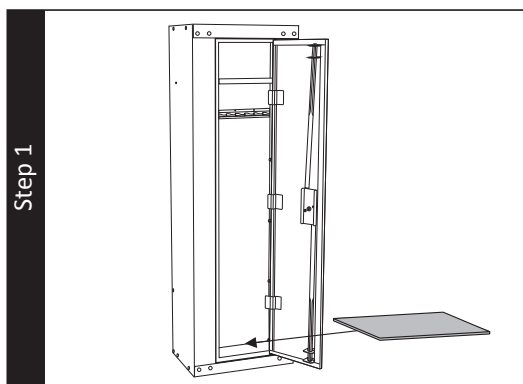


2. Insert the key and turn clockwise to release the 4pt locking system and grant access to your cabinet.



## 11. INSTALLING PROTECTIVE FOAM

1. Locate the foam panel provided inside your cabinet. This panel will be placed on the bottom panel of your cabinet to protect the finish on your valuables and firearms.

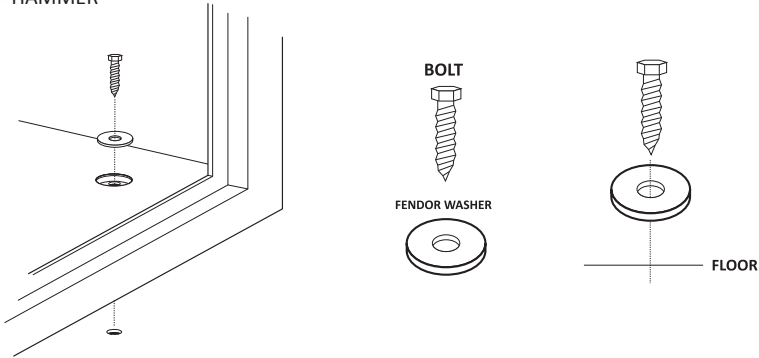


## 12. SECURING YOUR CABINET

**WARNING: YOUR CABINET IS DESIGNED TO SUPPORT ITSELF WHEN THE DOOR IS OPENED. HOWEVER, CAUTION SHOULD BE USED TO AVOID TIPPING. WHILE SECURING YOUR CABINET, BE SURE TO HAVE A SECOND PERSON HOLD AND STABILIZE THE CABINET TO KEEP IT FROM TIPPING, CAUSING INJURY, AND/OR DAMAGE TO THE CABINET AND SURROUNDING STRUCTURES. FAILURE TO DO SO WILL COMPROMISE THE SAFETY, SECURITY AND WARRANTY OF THE CABINET.**

### TOOLS NEEDED TO BOLT CABINET TO A CONCRETE SURFACE

- DRILL / HAMMER DRILL
- DRILL BIT – 3/16" ( for installing into concrete with provided hardware)
- WRENCH / 11/16" (10MM) SOCKET
- HAMMER



1. Use the hardware provided or consult your hardware retailer for fastening hardware for your particular mounting surface.
2. Open your cabinet door and providing access to the factory drilled bolt down holes.
3. To secure your cabinet to the floor it will first be necessary to drill pilot holes in the floor surface.
4. Drill the appropriate diameter and depth of pilot holes based on the type of hardware being used and the type of floor surface. For the hardware provided (concrete floor installation) we recommend using a hammer drill and 3/16" concrete drill bit to drill holes the two corresponding holes in the concrete floor.
5. Secure the cabinet, by threading 2 anchor bolts through the factory drilled bolt down holes in the cabinet ratcheting down tight.

## 13. LOADING YOUR CABINET

---

1. Store ammunition separately from valuables.
2. Do not put anything in your cabinet that will put pressure against the door when it is closed.
3. Select cabinet models have reinforced shelving but as a good safety precaution store heavier items either on the floor of the cabinet or away from the middle of the shelves.
4. When loading firearms into your cabinet, make sure they rest securely against the cutouts provided in the gun racks to prevent accidental tipping when the door is closed.

## 14. MAINTAINING HINGES AND INTERNAL MECHANISMS

---

The hinges and internal locking mechanism are permanently lubricated, thus needing no maintenance.

# THREE YEAR WARRANTY

SA Consumer Products, Inc. will repair or replace, at their sole discretion, any Sports Afield Gun Cabinet damaged by fire, forced entry, forced attack or natural flood for three years of the original owner purchase date.

SA Consumer Products, Inc. will repair or replace, at their sole discretion, any Sports Afield Gun Cabinet with defective parts, paint or lock for three years of the original owner purchase date.

If SA Consumer Products, Inc. deems a replacement cabinet is to be sent, they will pay the freight costs to ship the replacement cabinet to the original owner.

This three year warranty is limited to the cabinet and expressly excludes any loss associated with the contents of the cabinet.

SA Consumer Products, Inc. reserves the right to receive full evidence of your misfortune, such as a police report and/or homeowners statement of coverage. This warranty is not valid outside of the United States and Canada.

Proof of registration and copy of sales receipt must be on file at the time of claim. Visit our website at [www.sportsafieldsafes.com](http://www.sportsafieldsafes.com) to register your cabinet.

Three year warranty only applies to the original owner of the cabinet.

SA Consumer Products, Inc. shall only be responsible and liable when the safe is used in compliance with the directions specified in your new Sports Afield Cabinet Owner's Manual.

SA Consumer Products, Inc. requires that specific guidelines be followed for repair. The cabinet will be repaired in-home if possible (to include parts and labor); however, if factory replacement is necessary (at SA Consumer Products, Inc.'s sole discretion), the replacement will be shipped freight prepaid, curbside delivery.

This warranty is inclusive and is in lieu of any and all other warranties, express or implied. Specifically excluded are the warranties of merchantability and fitness for a particular purpose. This warranty is limited to the cabinet itself and/or its value and does not include consequential damages of any kind including, but not limited to, the contents in and of the cabinet.