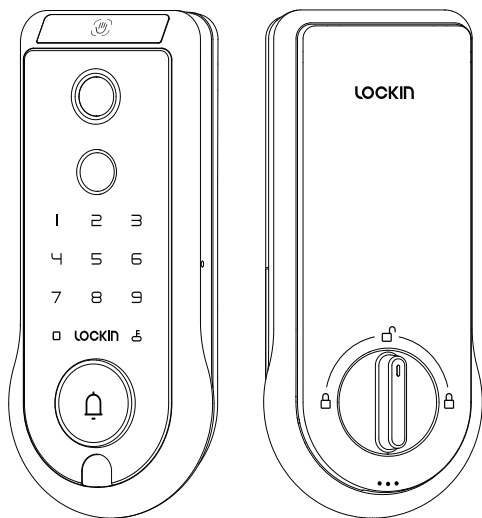




QUICK START GUIDE

Veno Pro Palm Vein Recognition Video Smart Lock

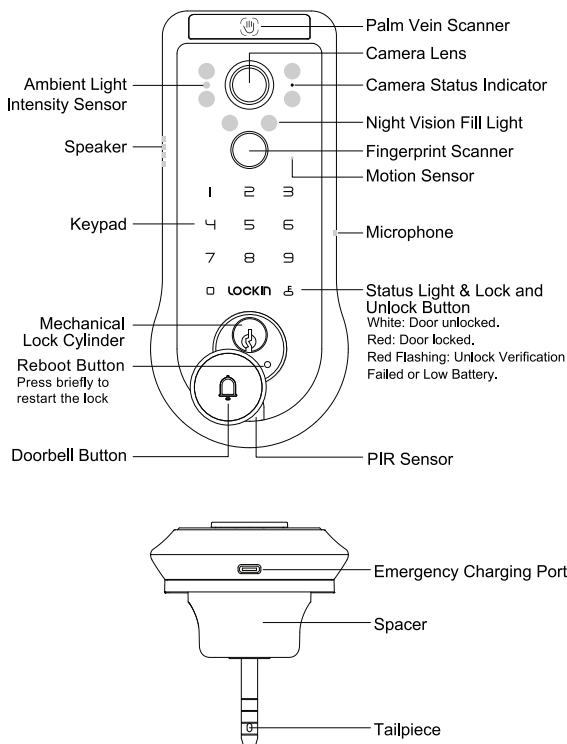


PN: 0524157004

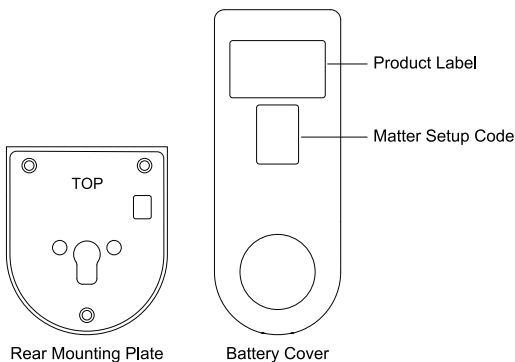
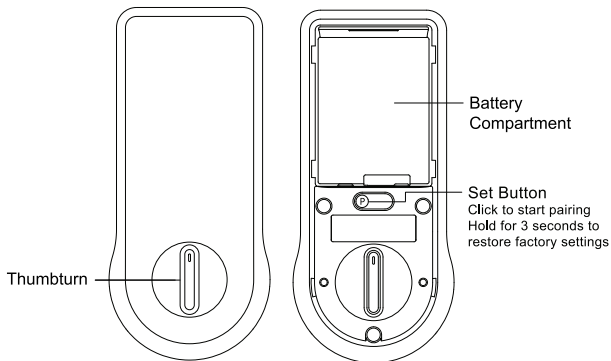
Model: LKMSD411

Overview of Product Feature & Layout

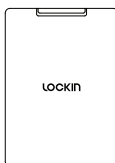
Exterior Assembly



Interior Assembly

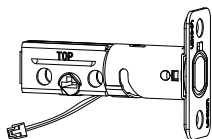


Quick Start Guide

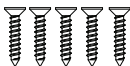


Rechargeable
Lithium-ion Battery

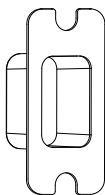
Parts List



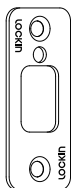
A Deadbolt



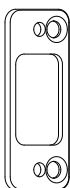
B Deadbolt&Strike Plate
Screw (#7 1") x 5



C Strike Box



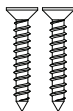
D Strike Plate



E Reinforced Strike Plate



F Backup Key x 2



G Reinforced Strike Plate
Screw (#16 2") x 2



H Screws for Rear
Mounting Plate
(1/4-28UNF 2 3/16") x 2



I Interior Assembly
Screw (M4*12) x 3

Installation Preparation

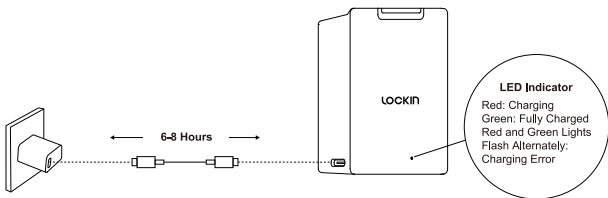
You can also find the corresponding installation steps and videos in the Lockin Smart app.

For better and easier installation, we recommend that you find a helper.

• FULLY CHARGE THE LITHIUM BATTERY BEFORE INSTALLATION.

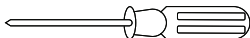
Fully charging the battery for the first time can take about 6–8 hours.

It is recommended to use a 5 V/2 A adapter and a Type-C charging cable for best charging performance.



• Required Tools (Not Provided)

💡 Don't use a power screwdriver. It may damage your lock.



#2 Phillips Screwdriver

INSTALLATION GUIDE

Installation generally takes less than 30 minutes. If you have any questions or concerns, send mail to support@lockin.com for assistance.

✉ support@lockin.com

1 Prepare the Door for Installation

Remove the existing lock and check whether the door status meets the requirements. If not, drill holes in your door to meet the installation requirements.

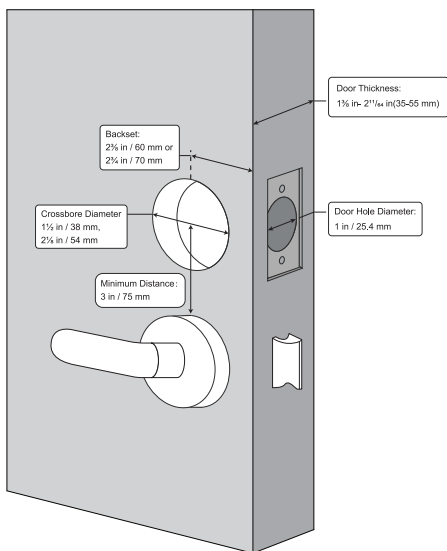
Door Thickness: $1\frac{3}{8}$ in - $2\frac{11}{64}$ in (35-55 mm)

Crossbore Diameter: $1\frac{1}{2}$ in / 38 mm, $2\frac{1}{8}$ in / 54 mm

Backset: $2\frac{3}{8}$ in / 60 mm or $2\frac{3}{4}$ in / 70 mm

Minimum Distance Between Handle and Crossbore Center:
3 in / 75 mm

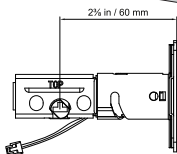
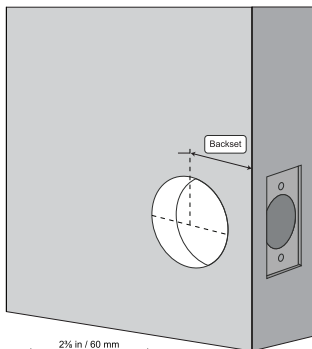
Door Hole Diameter: 1 in / 25.4 mm



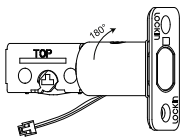
Note that Video Smart Lock Veno Pro is not compatible with storm doors as the storm door may block the camera. We recommend that you ensure your door is a standard entry door without a storm door before installing this product.

➤ Install the Deadbolt

1. Determine if the deadbolt length needs to be adjusted.

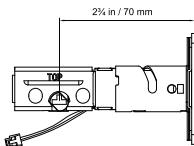


If the backset is $2\frac{3}{8}$ in / 60 mm, insert the deadbolt directly.



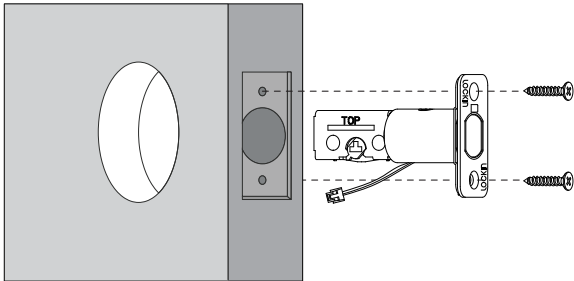
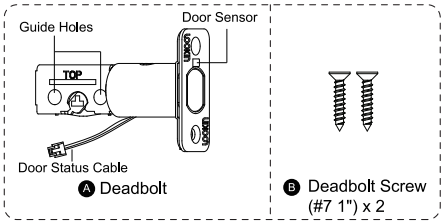
If the backset is $2\frac{3}{4}$ in / 70 mm, adjust the deadbolt length to $2\frac{3}{4}$ in / 70 mm (rotating by 180°).

Rotate the deadbolt surface to the end, until it reaches the $2\frac{3}{4}$ in / 70 mm position.

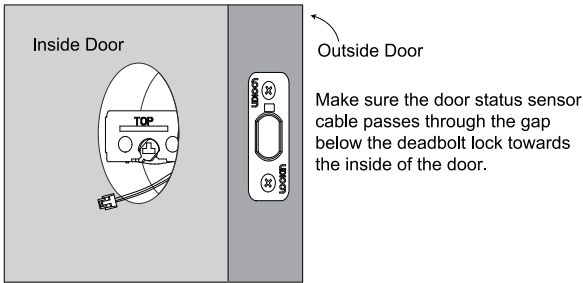


Reverse the direction to ensure "TOP" is facing upwards.

2. Insert the deadbolt into the edge bore on the side of the door. Make sure the word "TOP" is facing upwards and the T-shaped slot for fixing the tail plug is in the center of the face bore.



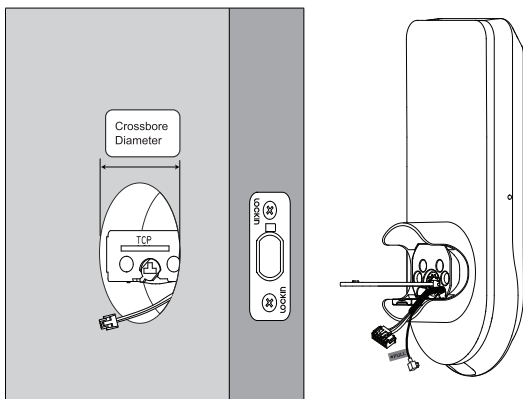
Before installing the deadbolt, first insert the terminal of the door status sensor cable into the edge bore on the side of the door and pull it out from the inside of the door to straighten it. Be careful not to damage the cable and terminal.



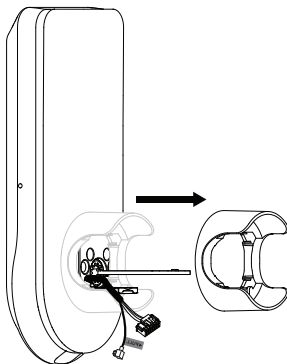
3 Install Exterior Assembly

1. Measure the diameter of the cross bore.

- If 2 1/8 in / 54 mm, install the exterior assembly directly.



- If 1 1/2 in / 38 mm, remove the spacer, then install the exterior assembly.

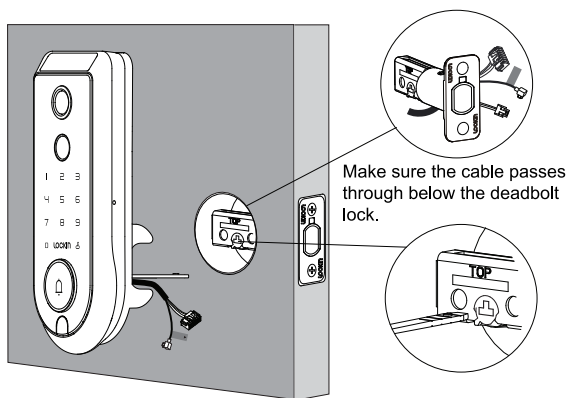


Need help?

Please contact support@lockin.com

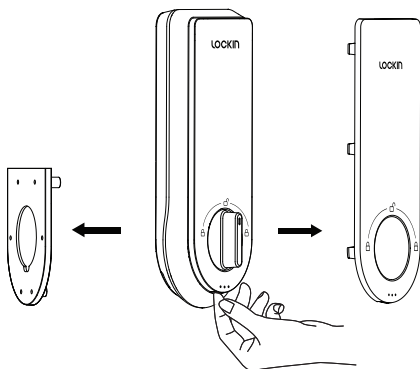
2. Ensure the exterior assembly is vertical and securely fastened.

If possible, find a nearby family member or friend to assist you in securing the exterior assembly, ensuring it remains in vertical orientation.




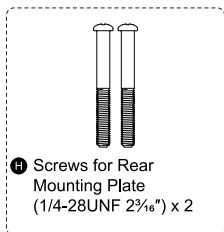
4 Install the Mounting Plate

1. Detach the mounting plate and battery cover from the interior assembly.



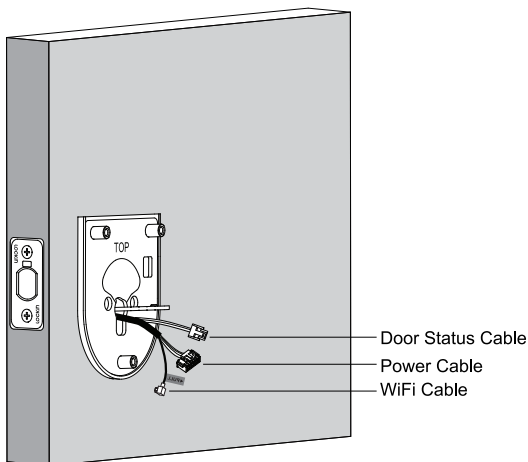
2. Run the cables through the slot on the mounting plate.
3. Align the mounting plate with the threaded screw.

 **IMPORTANT:** Before inserting and tightening screws, we recommend following the steps below.



Ensure that the correct screws are used (refer to the diagram for details), because using the wrong ones may cause an installation failure or lock damage.

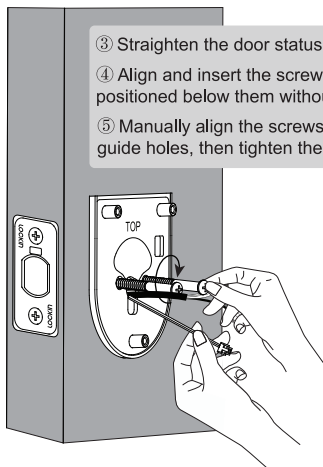
- ① Pass the door status cable through the cable hole on the mounting plate.
- ② Pass the power cable and Wi-Fi cable over the door status cable through the cable hole on the mounting plate.



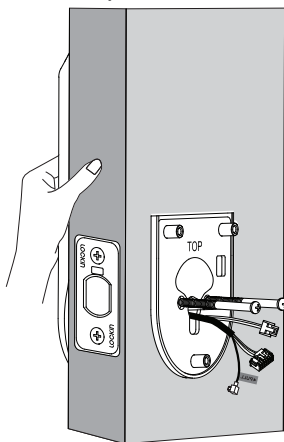
③ Straighten the door status cable carefully to avoid damage.

④ Align and insert the screws, ensuring that the cable is positioned below them without being pinched.

⑤ Manually align the screws with the nuts through the deadbolt guide holes, then tighten them with a screwdriver.



💡 For easier installation, have a helper hold the exterior assembly to ensure a secure fit and prevent tilting.



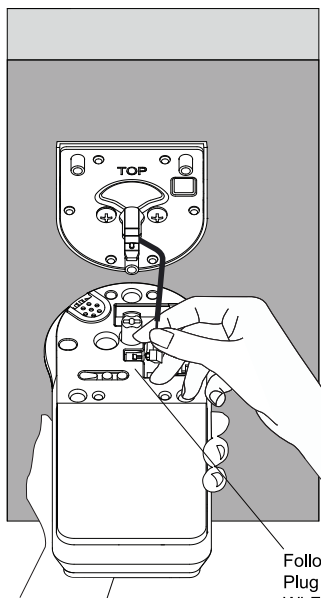
⑥ Use a screwdriver to secure your screw.

➤ Install Interior Assembly

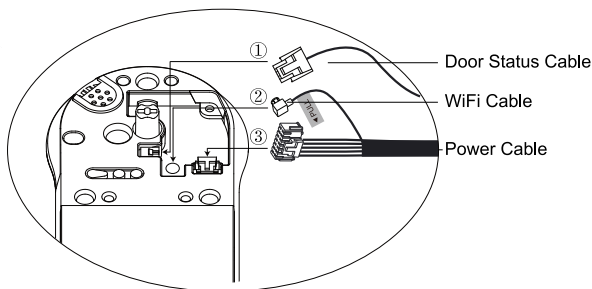
Need help?


Please contact support@lockin.com

1. Plug the power cable, door status cable, and Wi-Fi cable into the sockets on the interior assembly.



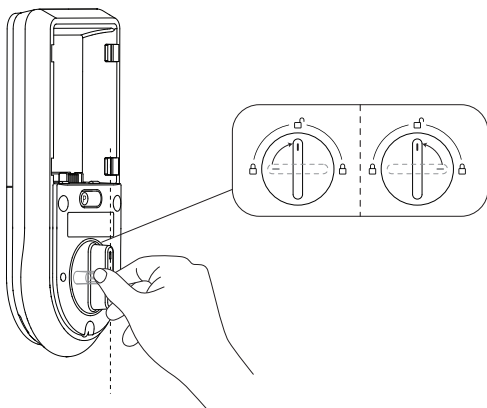
Follow these steps to install:
Plug the door status cable into port ①,
Wi-Fi cable into port ②,
power cable into port ③.



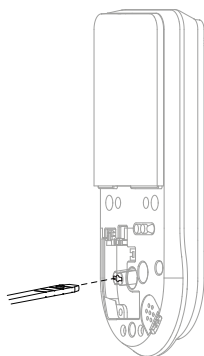
 **IMPORTANT:** Make sure the power cable is properly plugged in.
To disconnect the WiFi cable, gently pull the tab.

2. Insert the tailpiece into the T-shaped slot on the interior assembly.

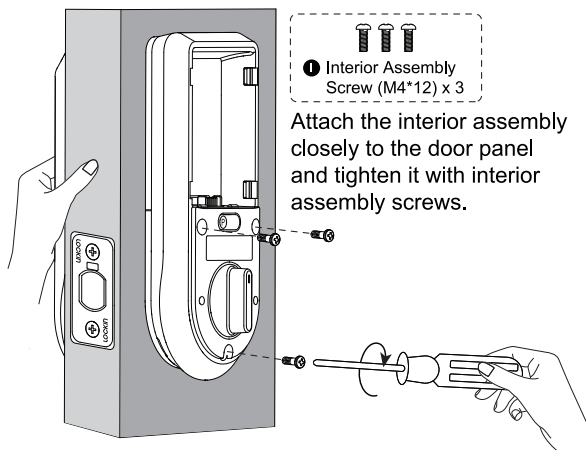
Ensure that the cables are neatly stored within the cable hiding space on the interior assembly.



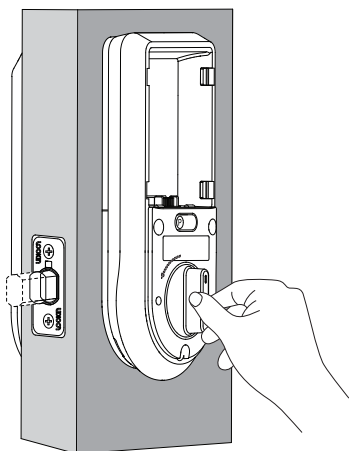
Make sure the deadbolt latch is retracted and adjust the thumbturn to a vertical position.



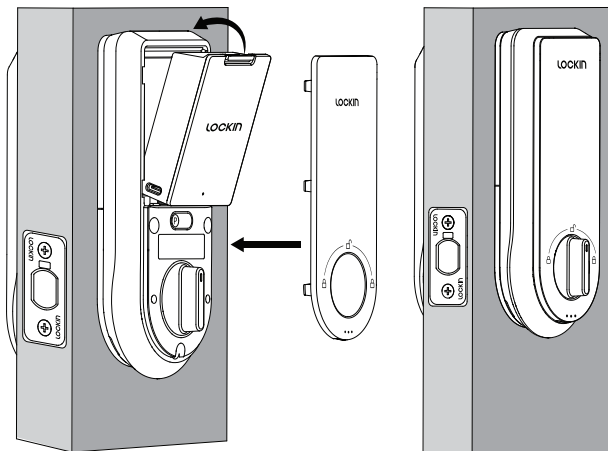
Arrange the cables to avoid pinching them when inserting the tailpiece into the interior assembly.



3. Check whether the latch can extend and retract smoothly by rotating the thumbturn without getting stuck.

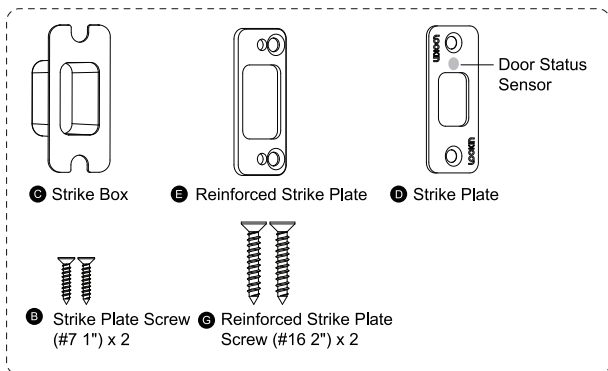


4. Insert the rechargeable battery, close the battery cover, and check whether the device can connect to power and work properly.

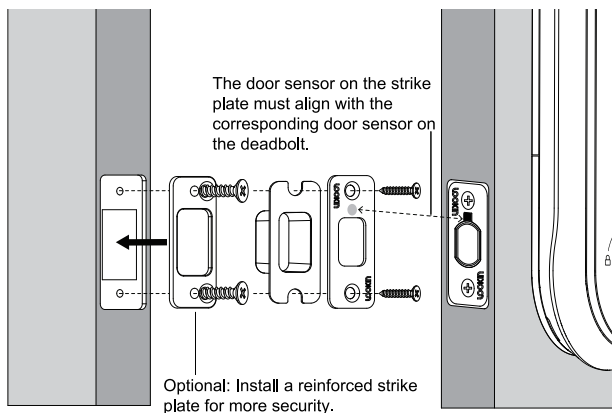
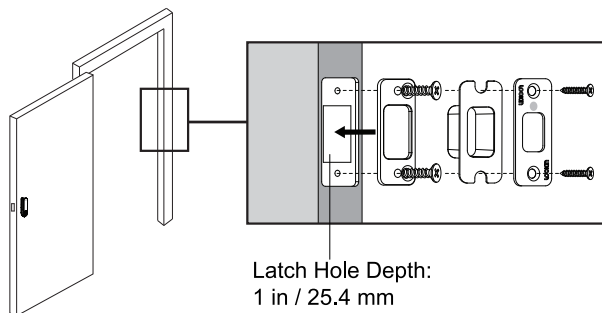


6 Install The Strike Plate and The Strike box

Ensure that depth of the latch hole on the door frame for installing the strike plate is at least 1 inch. Otherwise, the first calibration process after installation may fail, potentially leading to malfunction in subsequent usage.



Install strike plate and strike box.



SETTINGS

1 Download the Lockin Smart app and sign in or create an account

1. Scan the QR code below to download.



2. Search for "Lockin Smart" on the Apple App Store or Google Play Store.

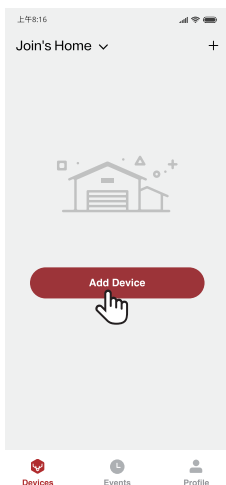


Apple logo and App Store are trademarks of Apple Inc., registered in the U.S. and other countries and regions.



Google Assistant, Google Home, Google Play, and the Google Play logo are trademarks of Google LLC.

2 In the Lockin Smart app, tap Add Device. On the page that appears, tap Veno Pro. Follow the in-app guidance and setup instructions to complete the corresponding settings.



3 Once the setting is completed and the battery cover is closed, Video Smart Lock Veno Pro is ready to use.

FCC compliance statement

This device complies with Part 15 of the FCC Rules.

Operation is subject to the following two conditions: (1) this device may not cause harmful interference, and (2) this device must accept any interference received, including interference that may cause undesired operation.

changes or modifications not expressly approved by the party responsible for compliance could void the user's authority to operate the equipment.

This equipment has been tested and found to comply with the limits for a Class B digital device, pursuant to Part 15 of the FCC Rules. These limits are designed to provide reasonable protection against harmful interference in a residential installation. This equipment generates, uses and can radiate radio frequency energy and, if not installed and used in accordance with the instructions, may cause harmful interference to radio communications. However, there is no guarantee that interference will not occur in a particular installation.

If this equipment does cause harmful interference to radio or television reception, which can be determined by turning the equipment off and on, the user is encouraged to try to correct the interference by one or more of the following measures:

- Reorient or relocate the receiving antenna.
- Increase the separation between the equipment and receiver.
- Connect the equipment into an outlet on a circuit different from that to which the receiver is connected.
- Consult the dealer or an experienced radio/TV technician for help.

ISED compliance statement

This device contains licence-exempt transmitter(s)/receiver(s) that comply with Innovation, Science and Economic Development Canada's licence-exempt RSS(s). Operation is subject to the

following two conditions:

- (1) This device may not cause interference.
- (2) This device must accept any interference, including interference that may cause undesired operation of the device.

L'émetteur/récepteur exempt de licence contenu dans le présent appareil est conforme aux CNR d'Innovation, Sciences et Développement économique Canada applicables aux appareils radio exempts de licence.

L'exploitation est autorisée aux deux conditions suivantes :

- (1) L'appareil ne doit pas produire de brouillage;
- (2) L'appareil doit accepter tout brouillage radioélectrique subi, même si le brouillage est susceptible d'en compromettre le fonctionnement.

FCC Radiation Exposure statement

This equipment complies with FCC radiation exposure limits set forth for an uncontrolled environment. This equipment should be installed and operated with minimum distance 20cm between the radiator and your body. This transmitter must not be co-located or operating in conjunction with any other antenna or transmitter.

ISED Radiation Exposure statement

This equipment complies with IC RSS-102 radiation exposure limits set forth for an uncontrolled environment. This equipment should be installed and operated with minimum distance 20 cm between the radiator and your body.

Cet équipement est conforme aux limites d'exposition aux radiations IC CNR-102 établies pour un environnement non contrôlé. Cet équipement doit être installé et utilisé avec une distance minimale de 20 cm entre le radiateur et votre corps.

Restrictions information

The devices certified under this annex are not permitted to be used on satellites. Devices used on aircraft are permitted

under the following conditions:

(a) Except as allowed in J.2(b), devices are only to be used when the aircraft is on the ground.

(b) Devices used in-flight are subject to the following restrictions:

(i) they shall be used within closed, exclusive on-board, communication networks within the aircraft

(ii) they shall not be used in wireless avionics intra-communication (WAIC) applications where external structural sensors or external cameras are mounted on the outside of the aircraft structure

(iii) they shall not be used on aircraft equipped with a body/fuselage that provides little or no RF attenuation except when installed on unmanned air vehicles (UAVs) and complying with J.2(d)

(iv) devices operating in the 59.3-71.0 GHz band shall not be used except if they meet all of the following conditions:

(1) they are FDS

(2) they are installed within personal portable electronic devices

(3) they comply with the relevant requirements in J.3.2(a), J.3.2(b) and J.3.2(c)

For ICES

CAN ICES-003(B) / NMB-003(B)

Warning

--Replacement of a battery with an incorrect type that can defeat a safeguard

--Disposal of a battery into fire or a hot oven, or mechanically crushing or cutting of a battery that can result in an explosion;

--Leaving a battery in an extremely high temperature surrounding environment that can result in an explosion or the leakage of flammable liquid or gas; and a battery subjected to extremely low air pressure that may result in an explosion or the leakage of flammable liquid or gas.

Specifications

Product Name: Veno Pro Palm Vein Recognition Video Smart Lock

Model: LKMSD411

Operating Voltage: 7.4V

Dustproof and Water-Resistant: IP65

Bluetooth: BLE 5.0

Wi-Fi: 2.4GHz

FCC ID: 2BMOG-LKMSD411

IC: 33374-LKMSD411

Customer Service and Warranty

12-Month Warranty Period

Contact Us

www.lockin.com | support@lockin.com

LOCKIN (U.S.) INC.

8605 SANTA MONICA BLVD #79525 WEST HOLLYWOOD,
CA 90069-4109

LOCKIN (U.S.) INC. All rights reserved, registered in the United States and other countries.