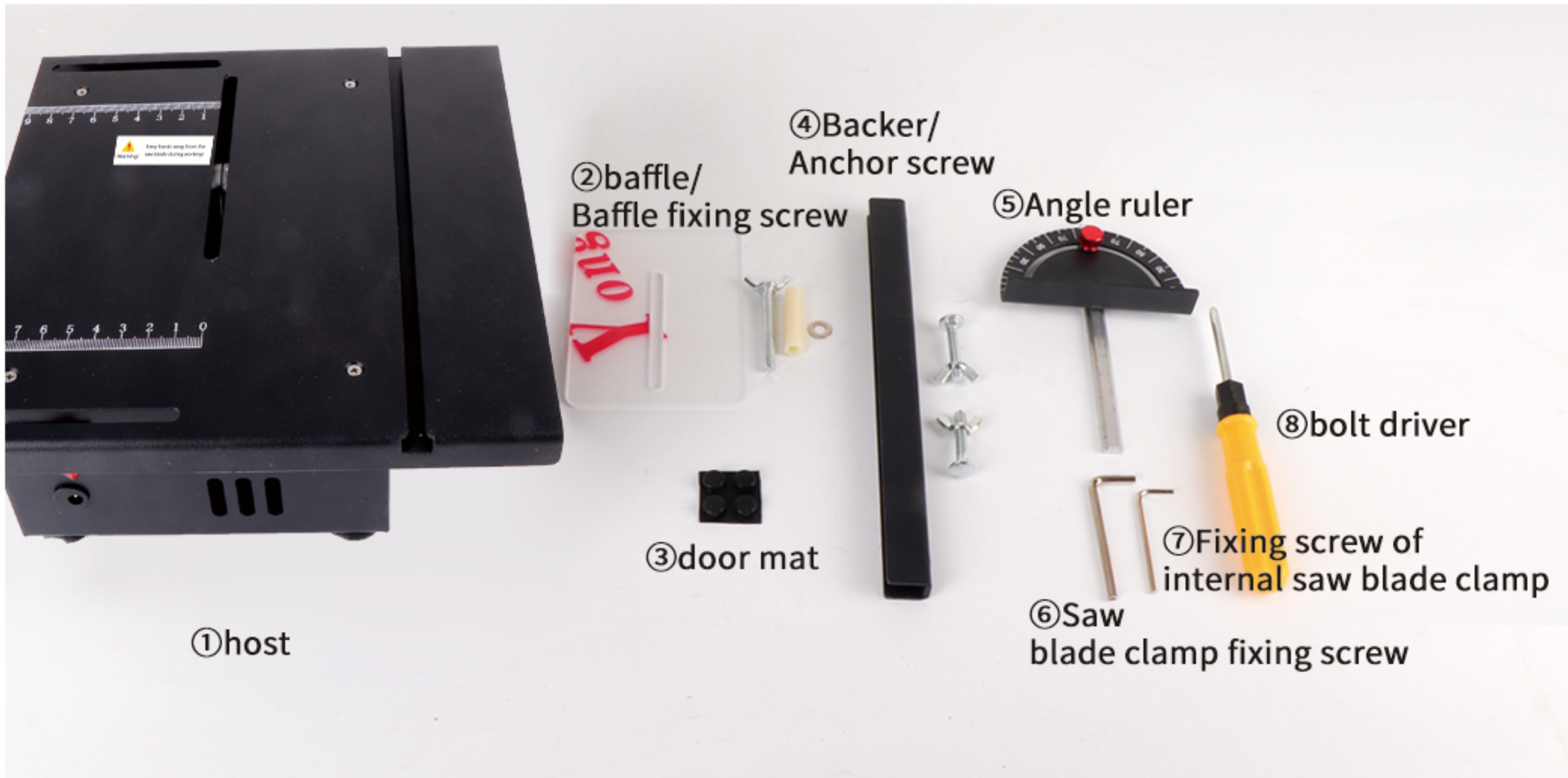


# Table saw list



- ⑨Grinding disc
- ⑩Metal saw blade It can be used to cut wood, acrylic, and soft metal (aluminum, etc.), and the loss of saw blade is large when cutting metal.
- ⑪Double mesh cutter Mostly used for metal cutting.
- ⑫Multifunctional saw blade It is mainly used for cutting wood, acrylic, and soft metal (aluminum, etc.), when cutting metal, the loss of saw blade is large.
- ⑬Emery saw It can be used for grinding and cutting stone.
- ⑭Small brush Used for cleaning debris after cutting.
- ⑮Sponge wheel It is installed on the grinding disc for cleaning and polishing.
- ⑯Flocking sandpaper It is installed on the grinding disc for grinding.
- ⑰Wool plate It is mounted on the grinding disc for polishing.
- ⑱Rounder Used for round beads and wooden beads to make them more round.
- ⑲Drill chuck It can hold grinding disc, etc.
- ⑳Machine screw A small screw used to fix the flexible shaft and drill chuck on the bench saw.
- ㉑Small hexagon screw When installing the soft shaft and drilling chuck, screw the small spanner of the machine meter screw.
- ㉒Drill chuck wrench For the clamping of drill chuck is loose.

- ⚠️ 1.When need to replace the saw blade or do anything action for functional or before using, please keep the supply plug disconnected.
- ⚠️ 2.The machine can only work with one fonction each times you'd like to use it. please take down the accessary after finishing the working.
- ⚠️ 3.After sawing, if you don't want to use it,please put down the baffle to prevent damage to the saw blade. Note: please pay attention to this guard when using other functions next time. If you don't remove the saw blade, please don't use it.

⚠️ Thank you for purchasing our products, so that you can use this product safely and satisfactorilyPlease read the user's manual and safety rules carefully before use

## 🔒 Safety instructions for use of electric tools

When using electric tools, in order to reduce accidents such as fire, electric shock and injury, it is necessary toPay attention to the basic safety precautions listed below; please read the following safety precautions carefully before operation.

1. Keep the workplace clean. Do not use electric tools in the messy workplace and worktable.
2. Pay attention to the workplace environment. Do not use electric tools in dark and wet places. Electric tools should not be exposed to rain.Do not use electric tools in the presence of flammable liquid or combustible gas.
3. Children should not be allowed to get close to the workplace and people without permission should be prohibited from entering the workplace.Don't let people get close to or touch tools or power connecting wires.
4. Collection tools. When not in use, the electric tools should be stored in dry places and out of the reach of children,It should be locked.
5. Maintain proper feed rate and pressure. Make the tool operation more safe and durable.
6. Select appropriate tools and accessories. Operate according to the specified application range, do not overload, do overload processing.
7. Pay attention to clothes. Do not wear loose clothing and accessories to avoid being entangled when the tool rotates at high speed.Rubber gloves and antiskid industrial safety shoes should be worn outdoors. Operators with long hair shall wear qualified protective caps.
8. Use safety glasses. Wear a mask when there is much shaving and dust.
9. Don't step on the wire. Do not drag the wire moving tool, or pull the wire to pull out the plug.It is also necessary to avoid touching hot objects and sharp metal edges or getting wet with grease.
10. Fix the workpiece. It is safer to fix the workpiece to be cut with a clamp than to hold the workpiece by hand.
11. When working, you must keep a proper and correct posture, stand firmly, and do not reach over the tools to pick up and process.
12. Pay attention to the maintenance tools. The tool must always be sharp in order to obtain good machining performance and operationSecurity. Lubricate and replace accessories as required. Check the conductor regularly. If any damage is found, please go to the professional immediatelyRepair center repair. If there is any damage to the extension conductor, it should be replaced immediately. Keep the handle dry and clean,No grease.
13. When the tools are not in use, or for maintenance, or when changing fixtures and tools, the power plug must be pulled out.
14. Remember to remove adjustment tools and spanners. The tool section must be checked before turning the machine onIf the adjustment tools and spanners are completely taken out, we must develop this habit.
15. Prevent accidental start-up. Before inserting the plug into the power socket, it is necessary to check whether the switch of the tool is turned off.After electrifying, the finger should not press on the switch frequently.
16. The extension conductor is used outdoors. When using tools outdoors, special outdoor extension wires must be used.
17. You must stay awake at work. Pay close attention to the work piece and tool. Tools should not be used when tired.
18. Check the damaged part. Before using the tool, the cover or other parts of the tool must be carefully checked If there is any damage, it is necessary to check whether the damage degree will affect the normal function of the tool.Check that all movable parts are in the correct position, the parts that must be fixed are fixed, etc,Check these components that may affect normal operation. If there is any damage to the cover or other parts, please contactShop repair or replacement. If there is any problem with the switch of the tool, please call a special service center to replace it immediately,Don't force to turn on the key is not working switch start tool use.
19. Avoid electric shock. When working, the body should not touch the grounded metal body, such as iron pipe, radiator, etcRefrigerator, etc.
20. Replace parts. When repairing and replacing parts, make sure to use the parts specified by the original factory and hand them over to the specialistThe repair center was replaced.
21. When connecting the power supply, pay attention to whether the voltage of the power supply is the same as that of the sign board. When the power supply voltage is higher than the applicable voltage of the tool,It is easy to damage the tool and cause accidents; if the power supply voltage is lower than the required voltage of the tool, it is harmful to the motor.

# WARRANTY

MODELS		SEAL OF DISTRIBUTOR
OF THE GOODS		
DISTRIBUTION UNIT		
USE THE UNIT		
ADDRESS		
INVOICE DATE		

PRODUCT MODEL _____	
INSPECTOR _____	
THE DATE OF PRODUCTION _____	

## Product parameters

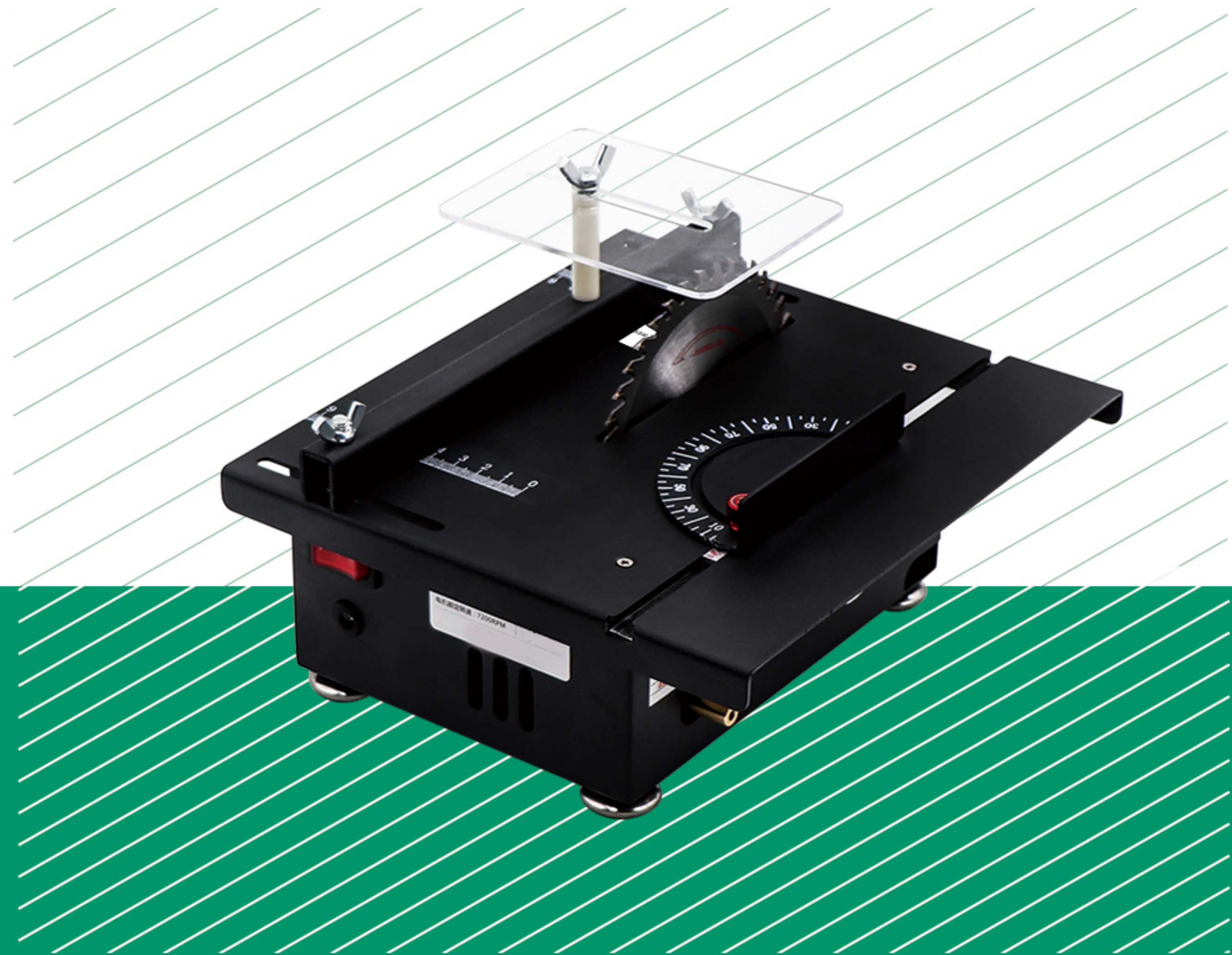


Table saw size	Current and voltage	motor speed	Output speed
24*22*10cm	24V-4.5A	10000r/min	1000-3000r
Clamping range	Adaptive power supply	Maximum cutting depth	Range of flexible shaft chuck
1.5~10mm	Seven stage speed regulation	40mm	1.0~3.2mm
LXGD-TJ-79501			

# BROCHURE

## trifold brochure

## PRODUCT DESCRIPTION



## The quality specification

Since the launch of this product in the market, with high quality, high stability, high performance and other characteristics to obtain the consistent praise of consumers, choose this product is to choose the "top tools, strong power.

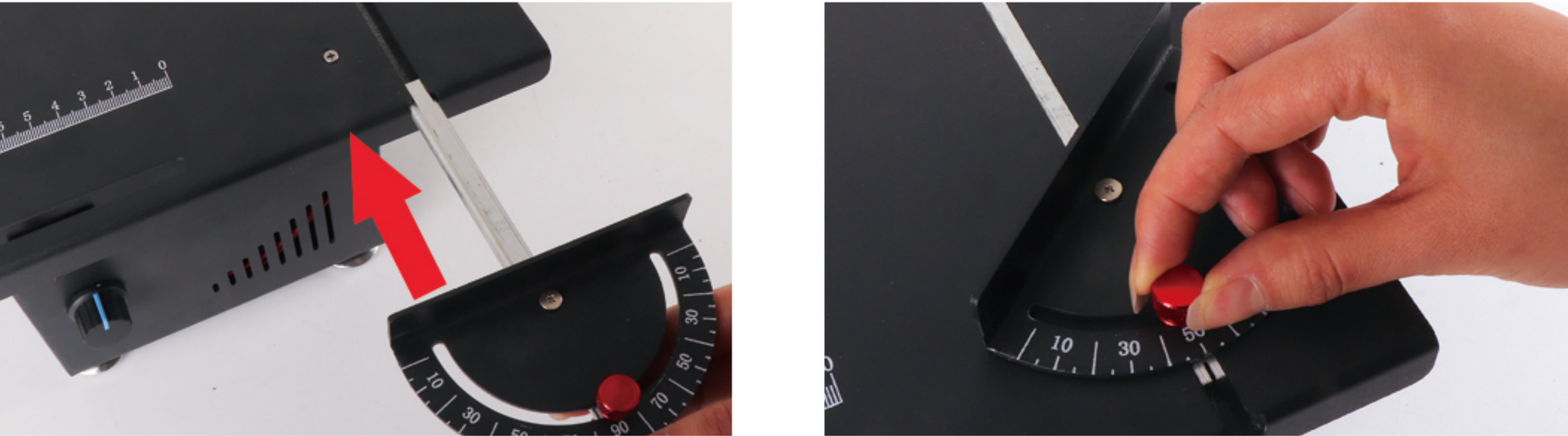
## Quality guarantee

1. Please read the instructions and safety access indicators carefully before use.
2. If the consuming parts are normally worn or damaged with man-made nature, there will be no warranty.
3. The whole machine warranty period of the product is one year, and the motor warranty period is three months. If the product is not used correctly according to the operation instructions or disassembled and repaired by itself within the warranty period, there is no warranty. If repairs are required, they will be charged according to the price of parts and maintenance.
4. Send back the warranty, the user and the manufacturer shall bear the shipping costs respectively, and other issues can be solved through negotiation with the seller and other units.
5. This warranty certificate is only applicable to buyers in the People's Republic of China



## Table saw installation

### (1)Installation of angle ruler⑤



- 1、Push the angle ruler into the groove.
- 2、Loosen the screw, adjust the cutting angle, and then tighten and fix it.

### (2)Installation of backers④



- 1、Put the anchor screw in from the bottom up.
- 2、Screw in the horn screw again.
- 3、Slide left and right, adjust the cutting size, and then tighten the set screw.

### (3)Install the baffle②



- 1、Install the column and baffle on the hole corresponding to the backer(Note that there is a protective film on the baffle, which can be removed and then installed, with better vision).
- 2、Install gasket and sheep horn screw, tighten screw and fix firmly.
- 3、Installation completion display.

## Function and usage introduction

### (1)Installation and replacement of saw blade

The installation method of multi-function cutting piece, metal cutting piece and emery cutting piece is the same.

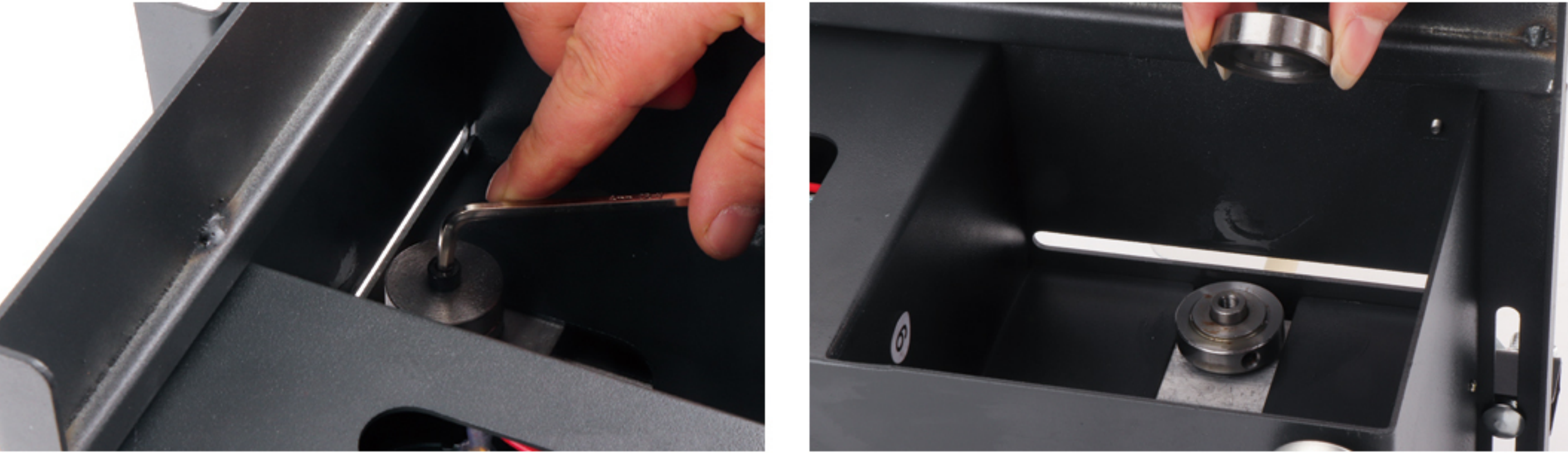


- 1、Use ⑥ wrench to loosen the black screw on the saw blade clamp.
- 2、Remove the black screw and the outer saw blade clip.

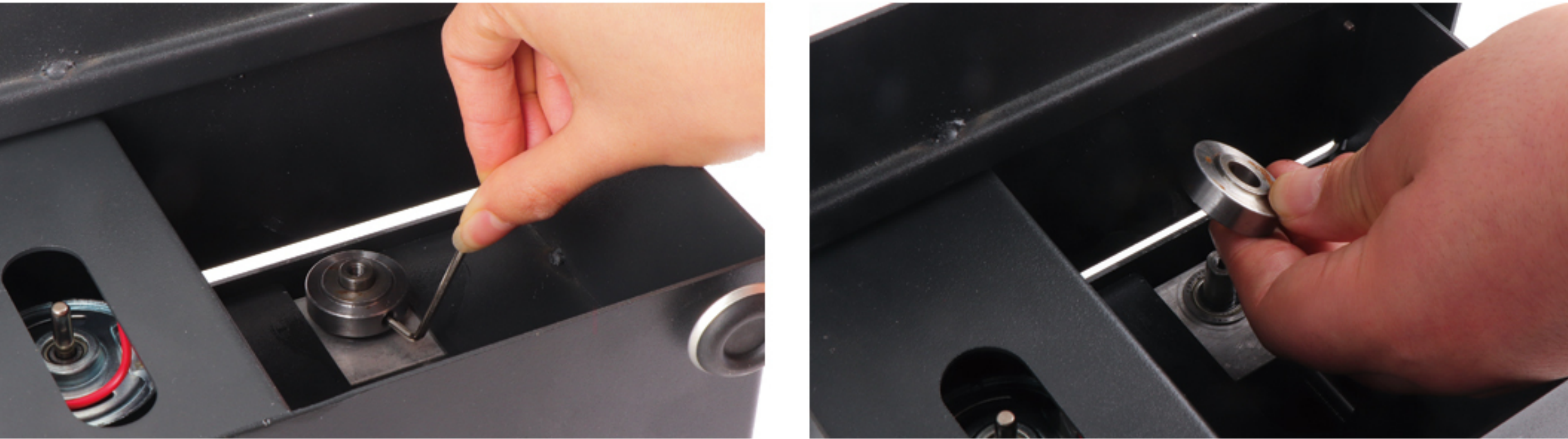


- 3、Install the saw blade (note the direction of saw blade saw teeth).
- 4、Put on the outer saw blade clamp, tighten the black screw and fix it firmly.

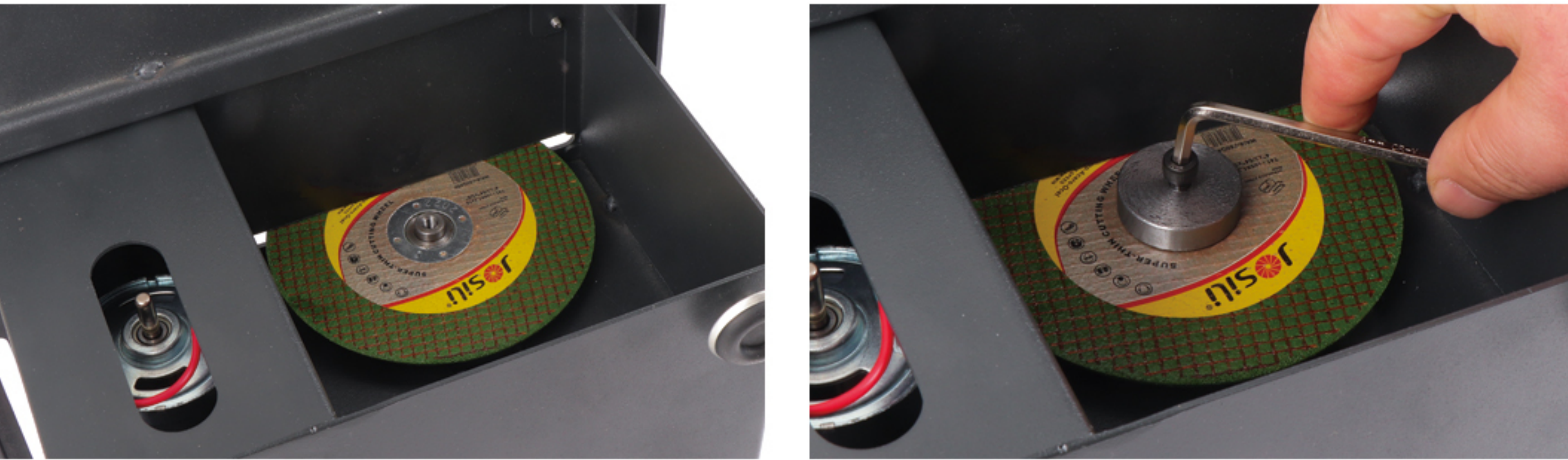
The installation method of double mesh cutting piece is as follows:



- 1、Use ⑥ wrench to loosen the black screw on the saw blade clamp..
- 2、Remove the black screw and the outer saw blade clip.



- 3、Use ⑦ wrench to loosen the small screw on the lower saw blade clamp.
- 4、Remove the saw blade clip at the bottom, turn the saw blade clip over and re install it, and use ⑦ wrench to re tighten the saw blade clip.



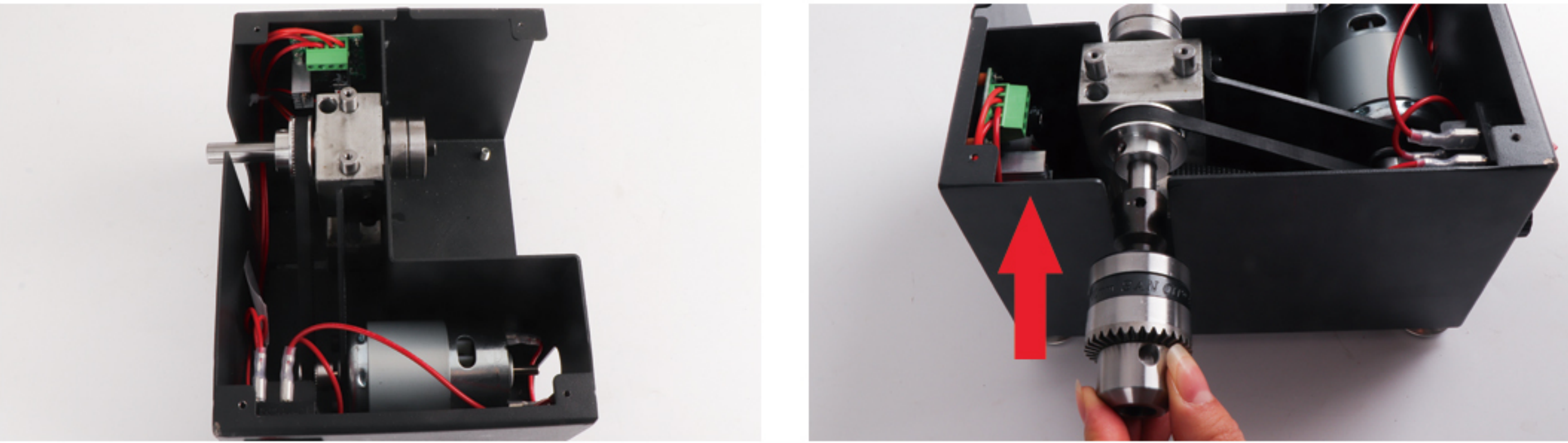
- 5、Install the upper double mesh cutting piece ⑪
- 6、Install the saw blade clamp on the upper side and retighten the black screw with ⑥ wrench.

- ⚠ 1.When need to replace the saw blade or do anything action for functional or before using, please keep the supply plug disconnected.
- ⚠ 2.The machine can only work with one fonction each times you'd like to use it. please take down the accessory after finishing the working.
- ⚠ 3.After sawing, if you don't want to use it, please put down the baffle to prevent damage to the saw blade. Note: please pay attention to this guard when using other functions next time. If you don't remove the saw blade, please don't use it.

### (2)Installation and use of drill chuck



- 1、Use ⑧ screw driver to remove the table of the saw.
- 2、Remove all screws on the table.



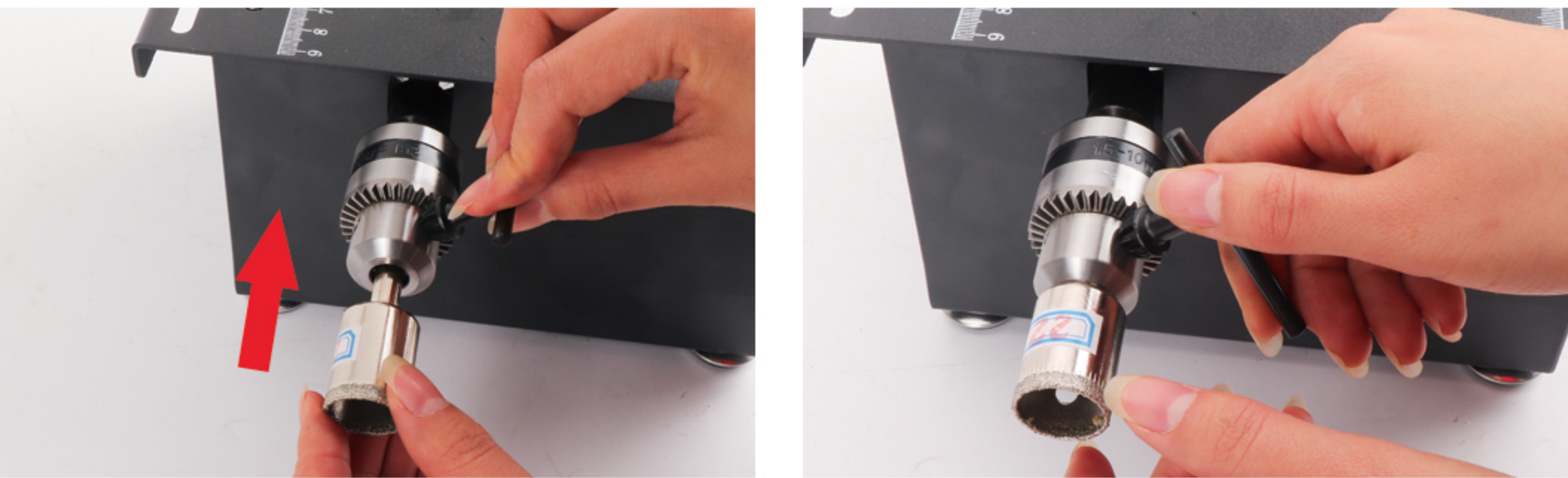
- 3、Remove the table top of the stage saw.
- 4、Insert drill chuck ⑬ into the shaft.



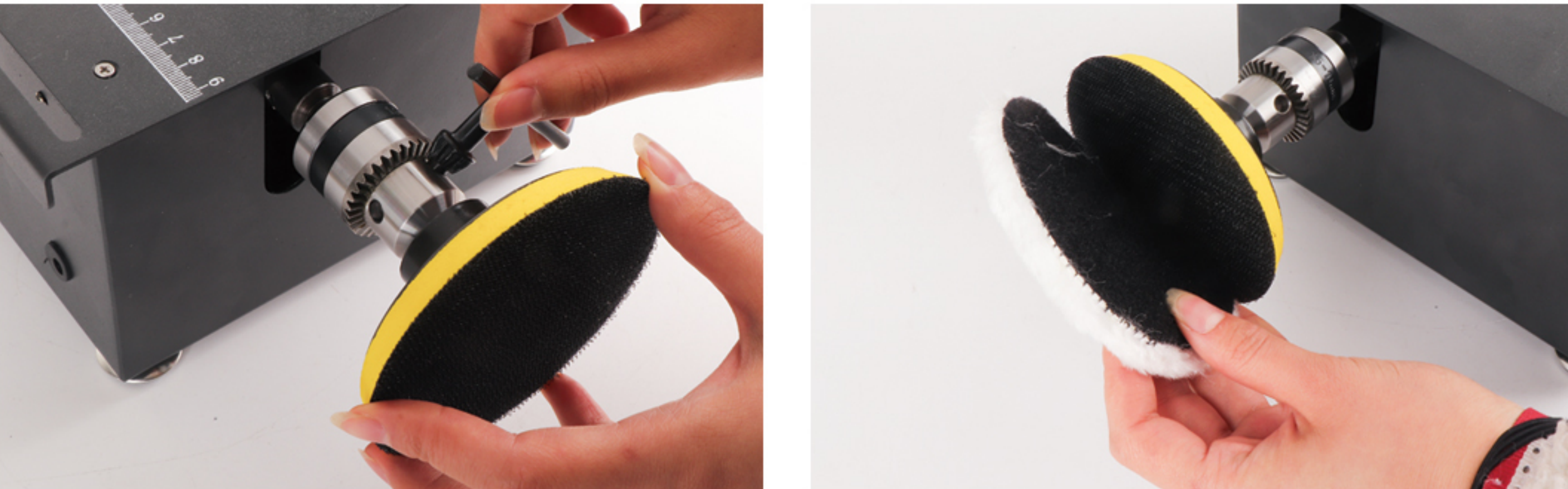
- 5、Tighten the small black screw ⑭ to the connecting rod with a ⑭ wrench.
- 6、Note that there are holes on both sides of the connecting rod, and screw the screw on both sides. Be sure to tighten it. Finally, install the upper saw table.

- ⚠ 1.When need to replace the blade disc or do anything action for functional or before using, please keep the supply plug disconnected.
- ⚠ 2.The machine can only work with one fonction each times you'd like to use it. please take down the accessory after finishing the working.

The rounding tool and grinding disk can be installed on the drilling chuck.



- 1、Use the ⑮ drill chuck wrench to loosen the drill chuck, install the rounding device, and then use the drill chuck wrench to tighten the drill chuck firmly.
- 2、Install the ⑩ connecting rod on the grinding disc (pay attention to tightening, otherwise the grinding disc will fall off).



- 3、Install the grinding disc with the drill chuck wrench.
- 4、Wool wheel, sponge wheel and sandpaper plate are directly bonded to the sanding plate.



### (3)Seven level adjustable speed power supply



- 1、The power cord is fully plugged into the adapter.
- 2、The other end of the adapter is connected to the host.
- 3、Push the button on the adapter to adjust the table saw speed by adjusting the voltage.

Plug the power plug into the 110 V or 220 V socket.



(American standard socket) (British standard socket)

- ⚠ 1.When need to replace the blade disc or do anything action for functional or before using, please keep the supply plug disconnected.
- ⚠ 2.The machine can only work with one fonction each times you'd like to use it. please take down the accessory after finishing the working.
- ⚠ 3.After sawing, if you don't want to use it, please put down the baffle to prevent damage to the saw blade. Note: please pay attention to this guard when using other functions next time. If you don't remove the saw blade, please don't use it.