



# FANMASTER

COOLING HEATING VENTILATION EXTRACTION

*More than fans*



## PRODUCT GUIDE

**Cooling, Extraction & Ventilation Solutions**

HVAC, Electrical, Building & Construction Edition

2024/2025

# PRODUCT GUIDE

## Cooling, Extraction & Ventilation Solutions

### HVAC, Electrical, Building & Construction Edition

This comprehensive guide is designed to assist professionals in the HVAC, electrical, building and construction industries with their cooling, extraction and ventilation requirements.

Explore our extensive range of high-quality products, including evaporative coolers, extraction fans, and more. We offer Australian-made options and trusted brands like Ouber and Icen.

Let Fanmaster be your partner in creating optimal temperature control and air quality solutions.

## BECOME AN INSTALLER

We are always on the lookout for professional installers with trades in air conditioning, electrical or roofing who are reliable, focused on customer satisfaction and have a high level of workmanship.

If you are a tradesperson, sub-contractor or established business looking for an opportunity to expand your business and increase your sales, please contact us.



**Scan for  
Full Product  
Catalogue**

## TABLE OF

# CONTENTS

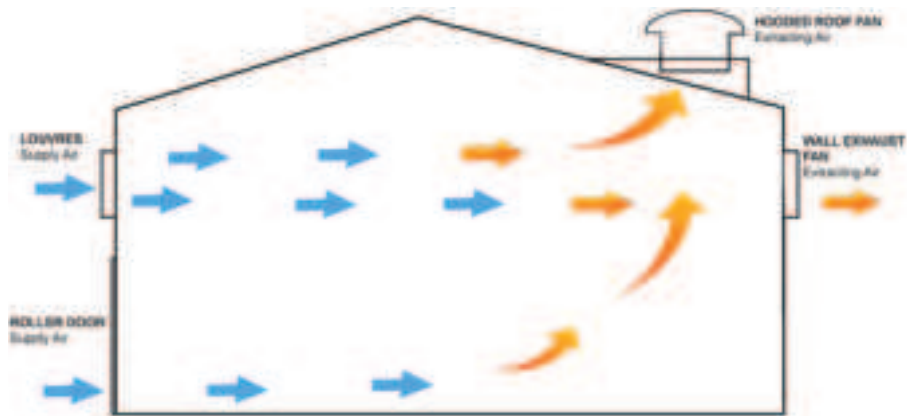
---

> Welcome	1
<b>Installed/Fixed Solutions</b>	
> Ventilation/Extraction	3-10
Wall Exhaust Fans	3-5
Axial Flow Fans	6
In-line Duct Fans	7
Roof Fans	8-9
Fume Arms	10
> Cooling	11-16
Evaporative Cooler	12
HVLS Fans	13-14
Wall Fans	15-16
<b>Portable Solutions</b>	
> Cooling	17-20
Portable Evaporative	17-18
Portable Air Conditioners	19-20

# VENTILATION/EXTRACTION

## What is Cross Flow Ventilation?

Cross flow ventilation is a natural ventilation strategy that uses the wind to move air through a building. It involves opening windows or doors on opposite sides of the building so that the air can blow through the space. This creates a current of air that helps to remove stale air and replace it with fresh air. A mechanical solution for this would be to add fans for a consistent air flow e.g. Roof Fans or Wall Exhaust Fans.



## Confined Space Ventilation

Confined space ventilation is the process of removing stale air, hazardous gases, vapours, fumes and dusts from a confined space to create a safe atmosphere for workers to enter and work.

When extracting air from a confined space, clean air needs to come from somewhere. If no clean air is available to enter the confined space through a large drain or vent (natural ventilation), it is necessary to consider blowing fresh air in. Using fans (mechanical ventilation) by supplying fresh air into an area we still need to find clean air from somewhere; it may be as simple as placing the fan at some distance away or outside a building and ducting the air in.

Products such as the Compact Air Blaster, Purging Fan and Portable Exhaust Blowers are ideal for confined space ventilation.

WALL EXHAUST EXTRACTION FANS

IWEL200, IWEL250, IWEL300, IWEL350, IWEL400

1 YEAR  
WARRANTY



- Features:
- Extracts large volumes of air
  - Easy to install
  - Cost effective and efficient
  - Self closing louvres stop reverse airflow
  - Ready to be hard-wired in
  - Plug not included
  - 240V
- Applications:
- Warehouse, Workshops & Factories
  - Garages
  - Agriculture
  - Horticulture

SPECIFICATIONS	UNIT	IWEL200	IWEL250	IWEL300	IWEL350	IWEL400
Air Flow	L/S	250	280	300	630	800
Noise Level	dBa	<45	<50	<58	<65	<67
Motor	W	45	45	45	75	145
Voltage		240	240	240	240	240
Current	A	0.12	0.12	0.19	0.31	0.60
Plug Connection		Hard wired	Hard wired	Hard wired	Hard wired	Hard wired
Fan Speed		1	1	1	1	1
Speed	RPM	1400	1400	1400	1400	1400
Diameter	mm	200	250	300	350	400

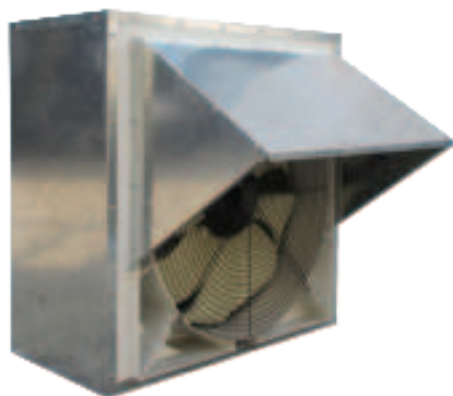


## WALL EXHAUST EXTRACTION FANS

IWLF6-11-6, IWLF6-11-6-3

1 YEAR  
WARRANTY

OUBER®



### Features:

- Galvanised Steel Body
- Rain Cover
- Internal Gravity Louvres
- Safety Wire Guards
- Supply or Exhaust
- Used to exhaust heat, smoke, fumes, dust or provide ventilation

### Applications:

- Warehouse, Workshops & Factories
- Agriculture
- Horticulture

IWLF6-11-6 uses a phase converter enabling the use of single phase power supply.

SPECIFICATIONS	UNIT	IWLF6-11-6	IWLF6-11-6-3
Air Flow	L/S	5000	5000
Noise Level	dBa	<70	<70
Motor	kW	1.1	1.1
Voltage		380	380
Controller		Phase Converter Input: 1PH 220V Output: 3PH 220V	-
Current	A	5	2.6
Plug Connection		Hard wired	Hard wired
Fan Speed		1	1
Speed	RPM	6P	6P
Insulation Class		F	F
IP Rating		IP44	IP44
Material of Blades		Nylon & Glass Fibre	Nylon & Glass Fibre
Material of Body		Galvanised Steel	Galvanised Steel
Material of Louvres		PVC	PVC
Measurements	mm	830(L)x430(D)x770(H)	830(L)x430(D)x770(H)

## WALL EXHAUST EXTRACTION FANS

IGLF950, IGLF1250

1 YEAR  
WARRANTY



FANMASTER  
COOLING HEATING VENTILATION EXTRACTION



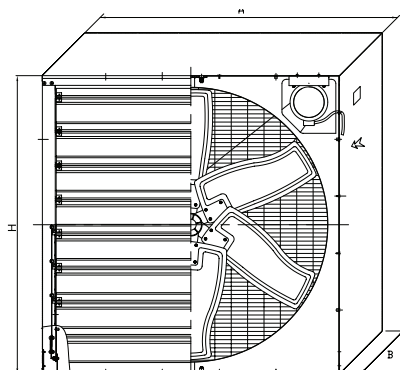
### Features:

- Built to last
- Extracts large volumes of air
- Easy to install
- Belt driven motor
- Quiet operation
- Louvres stop reverse air flow and weather when not on

### Applications:

- Warehouse, Workshops & Factories
- Agriculture

SPECIFICATIONS	UNIT	IGLF950	IGLF1250
Air Flow	L/S	9000	12,500
Noise Level	dBa	<60	<65
Motor	W	750	1100
Voltage		415	415
Current	A	1.04	1.53
Plug Connection		Hard wired	Hard wired
Fan Speed		1	1
Speed	RPM	450	450
Weight	kg	55	85
Diameter	mm	950	1250
Pack Dimensions	mm	1060*400*1060	1380*400*1380



Dimension AxBxH (mm)
1060x400X1060
1380x400X1380

# VENTILATION/EXTRACTION

## INDUSTRIAL WALL EXHAUST FANS

IW3, IW4, IW5, IW6, IW8, IW10

1 YEAR  
WARRANTY



**FANMASTER**  
COOLING HEATING VENTILATION EXTRACTION



### Features:

- Designed to exhaust or supply air
- Fitted with finger guards
- Powder coated steel casing
- IP55 motor standard (IP65 available)
- Fixed louvres available
- Made in Australia
- Suited for environments to remove heat, steam and dust
- Exe & Exd motors are available on sizes starting from 400mm

### Applications:

- Warehouse, Workshops & Factories
- Agriculture
- Construction sites
- Events & military
- Rental & Emergency

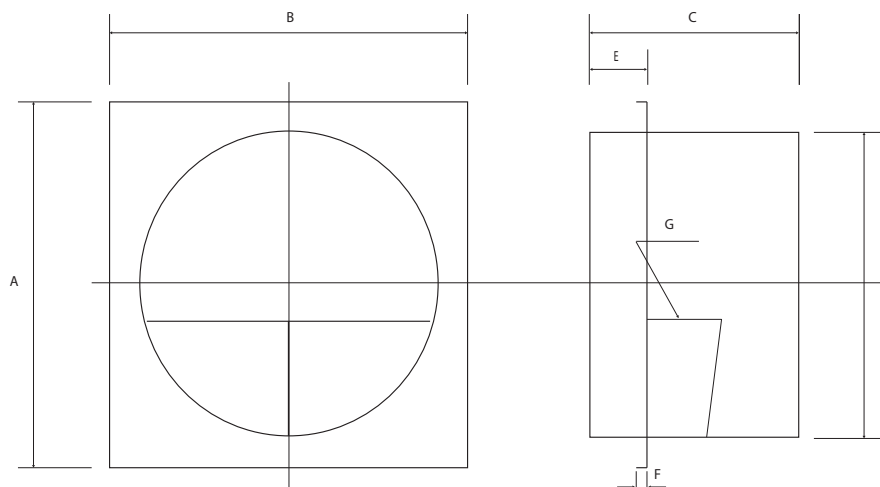
PART #	DIAMETER	MOTOR	VOLTAGE	MOTOR	FAN SPEED	POLES	AIR FLOW
IW3-370-4	300mm	370W	240V	IP55	1	4	425 L/s
IW3-370-4-3	300mm	370W	415V	IP55	1	4	425 L/s
IW4-370-4	400mm	370W	240V	IP55	1	4	1000 L/s
IW4-370-4-3	400mm	370W	415V	IP55	1	4	1000 L/s
IW4-550-2	400mm	550W	240V	IP55	1	2	
IW4-550-2-3	400mm	550W	415V	IP55	1	2	
IW5-550-4	500mm	550W	240V	IP55	1	4	2550 L/s
IW5-550-4-3	500mm	550W	415V	IP55	1	4	2550 L/s
IW5-550-4-3E	500mm	550W	415V		1	4	2550 L/s
IW6-750-4	600mm	750W	240V	IP55	1	4	2950 L/s
IW6-750-4-3	600mm	750W	415V	IP55	1	4	2950 L/s
IW6-750-4-3E	600mm	750W	415V		1	4	2950 L/s
IW6-11-4	600mm	1100W	240V	IP55	1	4	4200 L/s
IW6-11-4-3	600mm	1100W	415V	IP55	1	4	4200 L/s
IW6-11-4-3E	600mm	1100W	415V		1	4	4200 L/s
IW6-15-4	600mm	1500W	240V	IP55	1	4	
IW6-15-4-3	600mm	1500W	415V	IP55	1	4	
IW6-15-4-3E	600mm	1500W	415V		1	4	
IW8-15-4	800mm	1500W	240V	IP55	1	4	6570 L/s
IW8-15-4-3	800mm	1500W	415V	IP55	1	4	6570 L/s
IW8-15-4-3E	800mm	1500W	415V		1	4	6570 L/s
IW10-22-8-3	1000mm	2200W	415V	IP55	1	8	12400L/s

## INDUSTRIAL WALL & MANCOOLER GUARDS

PART #	SIZE
IWG300	300mm
IWG400	400mm
IWG500	500mm
IWG600	600mm
IWG800	800mm
IWG1000	1000mm
IWG1200	1200mm

## NON-RETURN LOUVRES

PART #	SIZE
IWL400	400 x 400mm
IWL500	500 x 500mm
IWL600	600 x 600mm
IWL800	800 x 800mm
IWL1000	1000 x 1000mm



DRUM Ø	BLADE Ø	A	B	C*	D	E	F	G*
300	280	400	400	400	300	100	25	-
400	380	500	500	400	400	100	25	-
500	480	600	600	400	500	100	25	-
600	580	700	700	400	600	100	25	-
800	780	900	900	400	800	100	25	-
1000	980	1100	1100	650	1000	100	25	-

\*C - Can vary due to the size of the motor

\*G - Motor plate varies due to motor size





## AXIAL FLOW FANS

## AF3, AF4, AF5, AF6, AF8, AF10

1 YEAR  
WARRANTY



**FANMASTER**  
COOLING HEATING VENTILATION EXTRACTION

### Features:

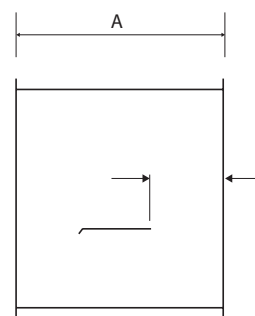
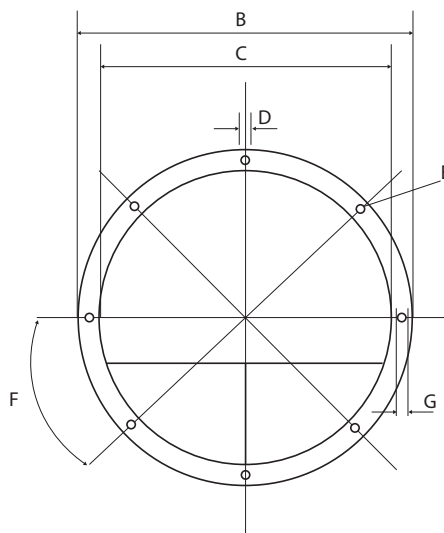
- Designed to remove heat, steam and dust
- Inline axial fan
- Built in flanges designed to attach to ducting
- Powder coated rolled steel casing
- IP55 motor standard (IP65 available)
- Made in Australia
- Ex e & Ex d motors are available on sizes starting from 400mm
- Hard wired

### Applications:

- Warehouse, Workshops & Factories
- Agriculture
- Horticulture
- Paint shops



SPECIFICATIONS	DIAMETER	MOTOR	VOLTAGE	IP RATING	FAN SPEED	POLE	AIRFLOW
AF3-370-4	300mm	370W	240V	IP55	1	4	680 L/s
AF3-370-4-3	300mm	370W	415V	IP55	1	4	680 L/s
AF3-550-2	300mm	550W	240V	IP55	1	2	
AF3-550-2-3	300mm	550W	415V	IP55	1	2	
AF4-370-4	400mm	370W	240V	IP55	1	4	1500 L/s
AF4-370-4-3	400mm	370W	415V	IP55	1	4	1500 L/s
AF4-370-4-3E	400mm	370W	415V		1	4	1500 L/s
AF4-750-2	400mm	750W	240V	IP55	1	2	
AF4-750-2-3	400mm	750W	415V	IP55	1	2	
AF4-750-2-3E	400mm	750W	415V		1	2	
AF5-750-4	500mm	750W	240V	IP55	1	4	2700 L/s
AF5-750-4-3	500mm	750W	415V	IP55	1	4	2700 L/s
AF5-750-4-3E	500mm	750W	415V		1	2	2700 L/s
AF5-11-2	500mm	1100W	240V	IP55	1	2	
AF5-11-2-3	500mm	1100W	415V	IP55	1	2	
AF5-11-2-3E	500mm	1100W	415V		1	2	
AF6-11-4	600mm	1100W	240V	IP55	1	4	3800 L/s
AF6-11-4-3	600mm	1100W	415V	IP55	1	4	3800 L/s
AF6-11-4-3E	600mm	1100W	415V		1	4	3800 L/s
AF6-15-4	600mm	1500W	240V	IP55	1	4	4550 L/s
AF6-15-4-3	600mm	1500W	415V	IP55	1	4	4550 L/s
AF6-15-4-3E	600mm	1500W	415V		1	4	4550 L/s
AF8-15-4	800mm	1500W	240V	IP55	1	4	6000 L/s
AF8-15-4-3	800mm	1500W	415V	IP55	1	4	6000 L/s
AF8-15-4-3E	800mm	1500W	415V		1	4	6000 L/s
AF8-22-4	800mm	2200W	240V	IP55	1	4	8000 L/s
AF8-22-4-3	800mm	2200W	415V	IP55	1	4	8000 L/s
AF8-22-4-3E	800mm	2200W	415V		1	4	8000 L/s
AF10-55-6-3	1000mm	5500W	415V	IP55	1	6	12000 L/s



DRUM Ø	BLADE Ø	A	B	C	D Ø	E	F	G
300	290	400	360	300	8	8	-	25
400	380	400	500	400	8	8	-	25
500	480	500	600	500	11	8	-	25
600	580	500	700	600	11	8	-	25
800	780	500	900	800	11	12	-	25
1000	980	700	1100	1000	11	12	274	25

# VENTILATION/EXTRACTION

## IN-LINE DUCT FANS

## IDF

**1 YEAR  
WARRANTY**



**FANMASTER**  
COOLING HEATING VENTILATION EXTRACTION

### Features:

- Durable galvanised steel casing
- High-efficiency EC motors (energy saving)
- Quiet operation
- Compact design
- Easy installation and maintenance

### Applications:

- Commercial - restaurants, cafes, hotels, and office buildings
- Industrial - workshops, warehouses, and industrial processes
- Residential - bathrooms, laundries, and kitchens



### SPECIFICATIONS

Model No	Duct Size	Voltage Frequency	VAC V	Power W	Current (A)	RPM	Airflow m³/h	Static Pressure Pa	Noise dBA	Maximum Efficiency Point Power W	Maximum Efficiency %
IDF-100E	100mm	230V 50Hz	10	39	0.35	2800	265	355	62	29.1	27.17
			8	25	0.24	2400	235	259	59	21.4	24.85
			6	12	0.14	1800	179	148	52	10.8	21.08
IDF-120E	120mm	230V 50Hz	10	40	0.35	2800	337	357	62	35.5	30.31
			8	24	0.23	2400	281	254	59	22.2	28.94
			6	12	0.14	1800	214	147	51	11.2	30.58
IDF-150E	150mm	230V 50Hz	10	42	0.37	2800	469	348	62	42.2	30.58
			8	28	0.25	2400	408	251	58	28.4	30.21
			6	14	0.15	1800	306	142	50	14.1	26.05
IDF-160E	160mm	230V 50Hz	10	42	0.37	2800	495	344	61	42.3	31.18
			8	26	0.25	2400	428	245	58	29.1	32.93
			6	14	0.14	1800	326	142	50	14.4	29.01
IDF-200E	200mm	230V 50Hz	10	112	0.89	2850	989	566	68	128.3	41.67
			8	66	0.55	2400	847	394	63	79.5	41.81
			6	30	0.26	1800	612	219	56	34.1	38.87
IDF-250E	250mm	230V 50Hz	10	118	0.93	2850	1071	581	68	128.4	44.12
			8	70	0.58	2400	887	411	64	84.9	43.63
			6	31	0.28	1800	653	226	57	53.3	40.52
IDF-310E	310mm	230V 50Hz	10	128	0.98	2750	1377	710	71	126.4	46.73
			8	82	0.67	2400	1173	497	68	125.7	45.56
			6	35	0.31	1800	887	273	60	53.3	44.63





## ROOF FANS

## IHR4, IHR6, IHR8

**1 YEAR  
WARRANTY**



**FANMASTER**  
COOLING HEATING VENTILATION EXTRACTION

### Features:

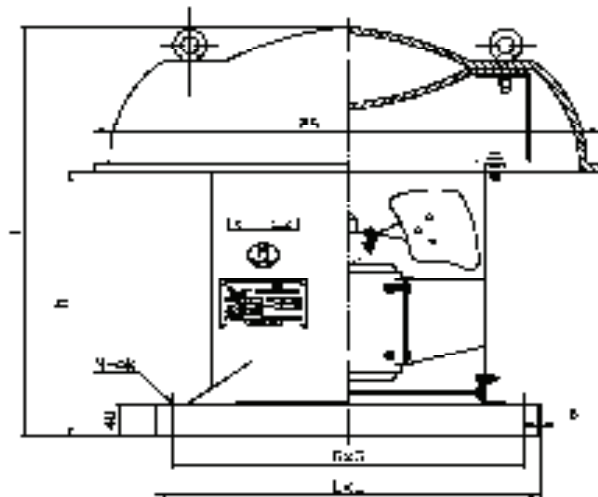
- Extracts heat, smoke, dust, or fumes from all types of buildings including factories and warehouses
- Used in conjunction with coolers to help lower temperatures during the hotter months
- Constructed from high quality steel and aluminium for a weatherproof design

### Applications:

- Warehouse, Workshops & Factories
- Plants



SPECIFICATIONS	UNIT	IHR4-550-4-3	IHR6-11-6-3	IHR6-22-4-3	IHR8-22-6-3
Air Flow	L/S	1111	3600	5200	7778
Noise Level	dBa	$\leq 72 \pm 5\text{dB(A)}$	$\leq 71 \pm 5\text{dB(A)}$	$\leq 75 \pm 5\text{dB(A)}$	$\leq 78 \pm 5\text{dB(A)}$
Motor	W	550	1100	2200	2200
Voltage	V	400~415	400~415	400~415	400~415
Pole		4	4	4	4
Plug Connection		Hard wired	Hard wired	Hard wired	Hard wired
Material Cap		Aluminium	Aluminium	Aluminium	Aluminium
Body/Base		Steel	Steel	Steel	Steel
Weight	kg	26	105	110	125



PART #	ØA	H	h	LxL	GxG	N-ØK	δ
IHR4-550-4-3	Ø650	550	355	520X520	470X470	4-Ø10	3
IHR6-11-6-3	Ø1000	670	455	900X900	770X770	4-Ø14	3
IHR8-22-6-3	Ø1390	750	480	1100X1100	1000X1000	4-Ø14	5



# VENTILATION/EXTRACTION

## CENTRIFUGAL ROOF FAN - DOWNBLAST

### RFCD

**1 YEAR  
WARRANTY**



**FANMASTER**  
COOLING HEATING VENTILATION EXTRACTION



#### Features:

- Robust fan cover resistant to high winds
- Galvanised steel plate for durable support
- Stepped flashing prevents water seepage
- Galvanised bird-proof net protects the fan
- High-performance belt-driven centrifugal roof exhaust fan
- Ideal for general clean air applications
- Durable spun aluminium housing for corrosion and weather resistance

#### Applications:

- Mining plants
- Civil buildings
- Shopping Centres
- Venues where efficient air extraction and exhaust are required

SPECIFICATIONS	UNIT	RFCD-200-120	RFCD-260-180	RFCD-320-250	RFCD-360-550	RFCD-500-22
Air Flow	m3/h	700/870	1204/1440	2007/2400	3386/4200	9423/10722
Size	mm	200	260	320	360	500
Motor	kW	0.12kW	0.18kW	0.25kW	0.55kW	2.2kW
Voltage		415V/50Hz	415V/50Hz	415V/50Hz	415V/50Hz	415V/50Hz
RPM		1380/1650	1380/1650	1380/1650	1380/1650	1450/1740

## CENTRIFUGAL ROOF FAN - UPBLAST

### RFCU

**1 YEAR  
WARRANTY**



**FANMASTER**  
COOLING HEATING VENTILATION EXTRACTION



#### Features:

- Efficient airflow
- Durable construction
- Optimised motor
- Weatherproof design
- Safety features
- Protected outlet

#### Applications:

- Mining plants
- Civil buildings
- Shopping Centres
- Venues where efficient air extraction and exhaust are required

SPECIFICATIONS											
Model No	Size mm	Motor kW	Voltage/Hz	RPM	Airflow		Static Pressure Pa	Airflow @ Zero Static Pressure		dBa	Weight kg
					m³/h	L/s		m³/h	L/s		
RFCU-280-370	280	0.37	415V/50Hz	1900	1984	551	277	2450	680	66	47
RFCU-315-550	315	0.55	415V/50Hz	1650	2454	681	264	2850	791	55	55
RFCU-400-11	400	1.1	415V/50Hz	1400	4263	1184	306	5300	1472		67
RFCU-450-22	450	2.2	415V/50Hz	1450	6286	1746	416	7600	2111		88
RFCU-500-3	500	3	415V/50Hz	1520	7735	2148	682	11,960	3322	78	95
RFCU-560-3	560	3	415V/50Hz	1250	8937	2482	579	12,642	3511		
RFCU-630-22	630	2.2	415V/50Hz	930	9467	2629	405	14,165	3934		
RFCU-800-55	800	5.5	415V/50Hz	860	17,926	4979	559	26,500	7361		



## INDUSTRIAL FUME ARM

IFA2-160-2

1 YEAR  
WARRANTY



**FANMASTER**  
COOLING HEATING VENTILATION EXTRACTION

### Features:

- Flexible arm (Available in 2m & 3m lengths)
- Easy & silent operation
- Robust design
- Fume arm and suction tube made from flame-retardant material

### Applications:

- Welding fume extraction
- Soldering fume extraction
- Dust extraction



SCAN HERE  
FOR PORTABLE  
OPTIONS

SPECIFICATIONS	IFA2-160-2	IFA2-160-3
Power (kW)	1.5	1.5
Voltage (V)	415 ~/50Hz	415 ~/50Hz
Connection	*Hardwired	*Hardwired
Fan Type	Centrifugal fan	Centrifugal fan
Airflow (L/s)	416±28	416±28
Full wind pressure (Pa)	1800	1800
Switch box	Circuit breaker, plug and wire	Circuit breaker, plug and wire
Suction arm	Φ160mm, 2m length, PP hood	Φ160mm, 3m length, PP hood
Installation bracket	280x330x503mm	280x330x503mm
Noise Level	≤74±5	≤74±5
Weight (kg) including suction arm	43±2	43±2

## What is the Difference Between Extraction and Ventilation?

Extraction and ventilation are both terms used to describe the movement of air in a building. However, they have different meanings.

Extraction is the process of removing stale or polluted air from a building. This is typically done using fans or vents that are installed in specific areas, such as warehouses and bathrooms.



Ventilation is the process of introducing fresh air into a building. This can be done through natural means, such as open windows and doors, or through mechanical means, such as fans or vents.

In general, extraction is used to remove harmful pollutants from the air, while ventilation is used to introduce fresh air and improve the overall quality of the air.



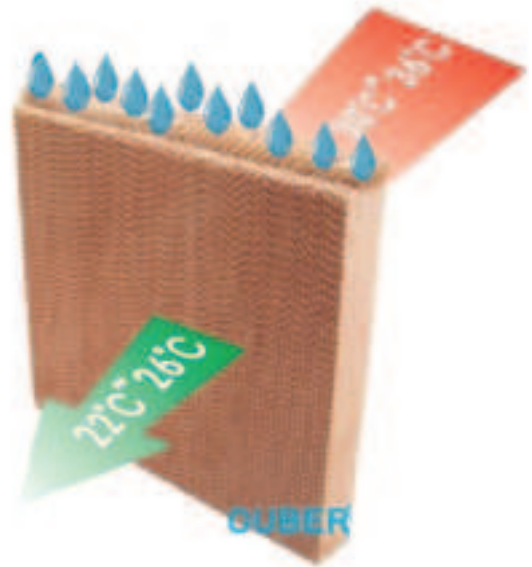
# COOLING

## What is Evaporative Cooling?

Evaporative cooling is a form of air conditioning and is an alternate to traditional refrigerant-based air conditioning systems. Evaporative cooling utilises the natural process of evaporation to cool the air.

## How it works?

Evaporative coolers use a low wattage water pump to circulate water from the water tank which then distributes the water across multiple cooling pads, which in turn become very wet. The fan draws the warm ambient temperature through the damped cooling pads, as it passes through the air is cooled by evaporation.

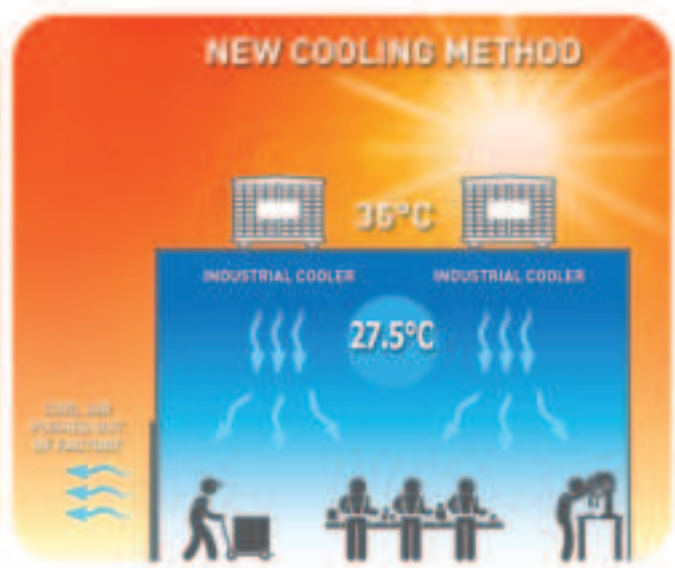
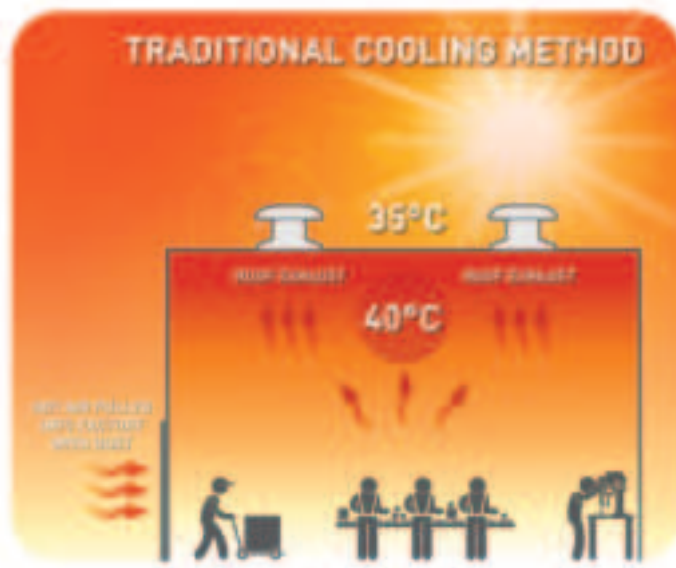


## Advantages

- Less expensive to install
- Less expensive to operate (vs. refrigerated air conditioning systems)
- Ease of maintenance
- Constant fresh air is supplied

## Temperature Drop Chart

		Outdoor Humidity								
	Outlet Temperature	10%	20%	30%	40%	50%	60%	70%	80%	90%
Outdoor Temperature	25°C	12.0	13.0	14.5	15.7	17.5	19.1	21.5	22.3	23.7
	27°C	13.5	14.5	16.5	17.4	20.0	21.2	23.0	24.6	27.0
	30°C	15.5	16.5	19.0	20.4	22.5	23.9	26.0	27.6	30.0
	32°C	17.0	18.0	21.0	22.6	25.0	26.6	29.0	30.4	32.0
	35°C	19.0	20.0	23.0	24.8	27.5	29.1	31.5	33.1	
	37°C	20.5	22.7	25.0	26.8	29.5	31.1	33.5		
	40°C	22.0	23.8	26.5	28.3	31.0	33.0			
	42°C	23.0	25.0	28.0	29.8	32.5				
	45°C	24.0	25.9	28.9	30.8					





FIXED EVAPORATIVE COOLERS

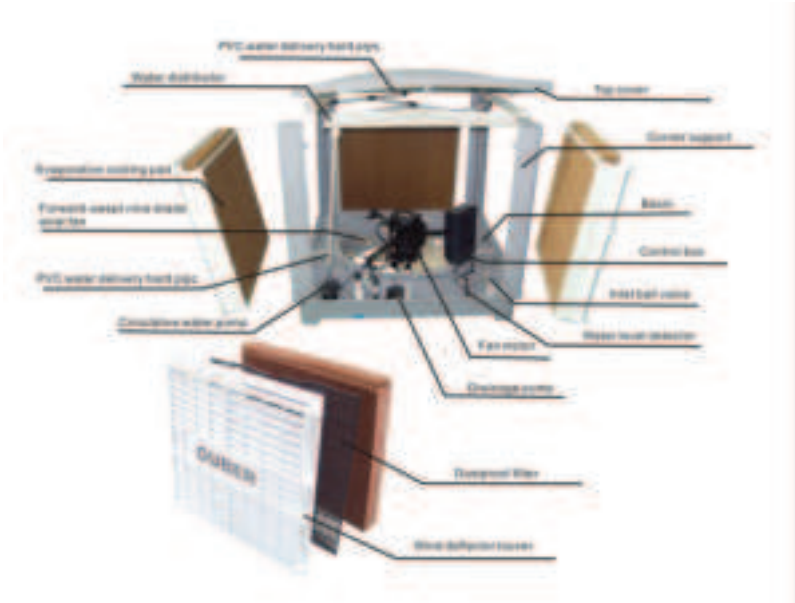
IDDAC-670



- Features:
- High air flow with low noise
  - Down draft air outlet
  - 4 x air inlets with filters
  - LCD control panel with remote control
  - Low power consumption - 1.1kW, 240v
  - Plumbed in for continuous water supply
  - Roof or wall mounted options
  - Fresh cool air constantly supplied
  - Fan only option
- Applications:
- Warehouse, Workshops & Factories
  - Agriculture
  - New & existing Commercial & Industrial builds
  - Events & Military



SPECIFICATIONS	UNIT	IDDAC-670
Air Flow	L/S	5,000
Fan Type		Axial
Noise Level	dBa	<68
Motor	kW	1.1
Voltage/Frequency		220~240/50
Current	A	7.5
Plug Connection		Hard Wired
Cooling Area	m²	up to 150
Air Supply Distance	m	22
Tank Capacity	L	25
Water Consumption	L/H	20
Fan Speed		Variable
Cooling Pad Size	mm	700*770
Cooling Pad Thickness	mm	100
Material of Blades		ABS
Material of Body		PP body
Weight	kg	56/69
Product Dimensions (L*D*H)	mm	1080*1080*980
Pack Dimensions	mm	1080*1080*1000



# COOLING

## HVLS FANS

## HVLS25, HVLS40, HVLS49, HVLS73

5 YEAR  
WARRANTY \*



The Fanmaster HVLS Fan range is highly efficient and energy-saving. Utilising a permanent magnet brushless motor made of high-quality NdFEB permanent magnets with a temperature resistance of 130°C and no demagnetisation, these fans provide a maintenance-free and long-lasting motor. The blades are crafted from polymer composite material and designed with a high lift resistance ratio aviation airfoil. The wingtip technology effectively reduces air vortex movement, minimising energy loss caused by vortex. This range features 15 innovative safety designs to ensure the safe operation of the fans.

### Features:

- Highly efficient and energy-saving
- Permanent magnet brushless motor for maintenance-free and long-lasting operation
- Polymer composite blades with high lift resistance ratio aviation airfoil
- Wingtip technology reduces air vortex movement for minimal energy loss
- 15 innovative safety designs for safe operation

### Applications:

- Warehouse, Workshops & Factories
- Agriculture
- Construction sites
- Sports Facilities

SPECIFICATIONS									
Model No	Diameter m	RPM	Power W	Voltage	Air Volume		Coverage m <sup>2</sup>	Optimum use area m <sup>2</sup> Air Velocity ≥ 1m/s	Main Fan Weight kg
					l/s	m <sup>3</sup> /min			
HVLS25	3	120	150	220~240	60,000	3,600	225	56	31.5
HVLS40	4	95	420	220~240	125,000	7,500	550	220	47.8
HVLS49	4.9	85	720	220~240	175,000	10,500	700	360	54.5
HVLS73	7.3	56	1250	220~240	296,666	17,800	1375	840	83.6





## POWER TECHNOLOGY

- **Efficient and Compact:** Our permanent magnet external rotor motor offers high efficiency, energy savings, and a compact, lightweight design
- **Dust Protection:** Our patented labyrinth-type dust-proof structure prevents dust from entering the motor core, ensuring optimal performance
- **Enhanced Cooling:** Our patented motor core heat dissipation system maintains low temperatures for extended service life



## BLADE TECHNOLOGY

- **Advanced Aerodynamics:** Our blades feature a high lift-resistance ratio aviation airfoil design for optimal performance
- **Durability:** Constructed from high-strength, lightweight materials, our blades are impact-resistant, anti-aging, and built to last
- **Noise Reduction:** Our patented wingtip guide plate minimises air turbulence, reducing noise levels and improving efficiency



## SAFETY TECHNOLOGY

- **Comprehensive Protection:** Our fan incorporates 12 major safety features for your peace of mind
- **Structural Integrity:** Reinforced steel beam locking and hanger safety cables ensure secure installation
- **Motor Protection:** Motor shaft brackets and anti-drop structures safeguard against damage
- **Internal Safety:** Step locks and permanent magnet self-locking mechanisms prevent accidental movement
- **Blade Security:** Reinforced blade mounting brackets and safety link mechanisms enhance durability
- **Electrical Safety:** Our control system includes overload protection for added reliability
- **High-Strength Components:** Grade 12.9 fasteners and anti-loosening measures provide lasting performance
- **Impact-Resistant Blades:** Non-metal polymer composite blades are resistant to damage



## CONTROL TECHNOLOGY

- **Advanced Control:** Developed in partnership with a leading frequency converter manufacturer, our control system offers superior performance
- **Comprehensive Protection:** Safeguard your investment with overcurrent, overvoltage, undervoltage, and overload protection
- **Smooth Operation:** Enjoy a seamless start, acceleration, deceleration, and stop, minimising vibration and noise



## WINGTIP TECHNOLOGY

- **Enhanced Efficiency:** Patented wingtip guide plate minimises air turbulence at the blade's edge
- **Reduced Energy Loss:** This reduces energy waste, leading to improved efficiency and lower operating costs
- **Quieter Operation:** The optimised airflow also results in a quieter, more comfortable environment

# COOLING

## What is Air Circulation?

Air circulation is the movement of air in a room or building. It is important for maintaining good indoor air quality and comfort. Air circulation helps to:



- Remove stale air and pollutants from the air
- Distribute heat or cool air evenly throughout the room
- Prevent the buildup of moisture and mould
- Create a more comfortable environment

### COMMERCIAL FANS

### ICF450W

**3 YEAR  
WARRANTY**



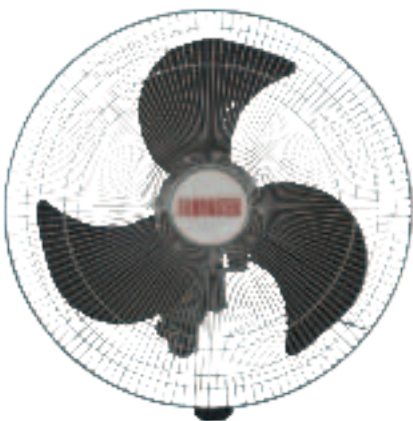
**FANMASTER**  
COOLING HEATING VENTILATION EXTRACTION

#### Features:

- Commercial 450mm air circulating fan
- Quiet, stylish and effective
- 3 Speeds
- 90° & Fixed oscillation
- Vertically adjustable
- Pull cord switch for ease & safety

#### Applications:

- Warehouse, Factories & Workshops
- Offices
- Shops
- Lunchrooms
- Gymnasiums
- Garages
- Outdoor entertaining areas



SPECIFICATIONS	UNIT	ICF450W
Diameter	mm	450
Motor	W	130
Voltage		240
Maximum Air Flow	L/S	1910
Current		0.54
Plug Connection		3 Pin 10A
Fan Speed		3
Weight	kg	9
Type		Wall
STAGE 1		
Noise	dB	48
STAGE 2		
Noise	dB	50
STAGE 3		
Noise	dB	56

# INSTALLED/FIXED

## INDUSTRIAL WALL FANS

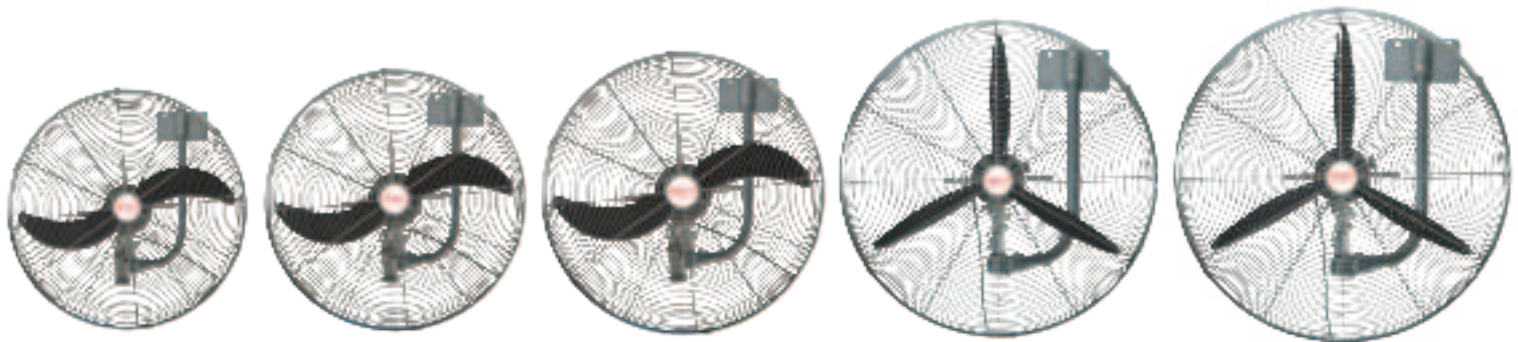
IFW500, IFW600, IFW650, IFW750, IFW850

**3 YEAR  
WARRANTY**

**FANMASTER**  
*Premium*

### Designed to Perform & Last!

The Fanmaster Premium Fans are manufactured to the highest quality. These Industrial Fans have been sold for over 24 years in the Australian market. This is the most comprehensive range on the market from floor, wall & pedestal fans, with sizes from 500mm to 850mm.



#### Features:

- Premium quality fans
- Full range of sizes to suit any application
- 3 speeds
- 90° adjustable oscillation
- Low wattage means cheaper running costs
- Pull cord switch for ease & safety
- Quick release clips on guards for easy cleaning

#### Applications:

- Warehouse, Factories & Workshops
- Offices
- Shops
- Lunchrooms
- Gymnasiums
- Garages
- Outdoor entertaining areas

SPECIFICATIONS	UNIT	IFW500	IFW600	IFW650	IFW750	IFW850
Diameter	mm	500	600	650	750	850
Motor	W	130	170	210	240	350
Plug Connection		3 Pin 10A	3 Pin 10A	3 Pin 10A	3 Pin 10A	3 Pin 10A
Maximum Air Flow	L/S	2166	3250	3833	5033	6500
Weight	kg	14	15	16	17	19
STAGE 1						
Power	w	97	120	148	175	255
Speed	rpm	1100	1100	925	1100	1100
Noise	dB	48	52	45	58	68
Air Flow	L/S	1583	2083	2383	3566	4250
STAGE 2						
Power	w	106	130	175	195	283
Speed	rpm	1250	1250	1250	1250	1250
Noise	dB	50	56	55	70	82
Air Flow	L/S	1933	2500	2833	4500	5333
STAGE 3						
Power	w	130	170	210	240	350
Speed	rpm	1400	1400	1400	1400	1400
Noise	dB	55	62	68	75	88
Air Flow	L/S	2166	3250	3833	5033	6500

# COOLING

## PORTABLE EVAPORATIVE COOLERS

### PAC125-ADC

2 YEAR  
WARRANTY

OUBER®



#### Features:

- Efficient and durable spot cooler
- Digital LCD control panel with remote control for easy use
- Air supply distance up to 8m
- Automatic swing louvre function
- DC motor
- Low power consumption
- 3 cooling pads with pre filters for dust
- Wheels with brake function

#### Applications:

- Warehouse, Workshops & Factories
- Agriculture
- Construction sites
- Events & military
- Rental & Emergency

SPECIFICATIONS	UNIT	PAC125-ADC
Air Flow	L/S	1,111
Fan Type		Axial
Noise Level	dBa	<61
Motor	kW	0.125
Voltage/Frequency		220~240/50
Current	A	0.78
Plug Connection		3 Pin 10A
Cooling Area	m <sup>2</sup>	up to 30
Air Supply Distance	m	8
Tank Capacity	L	40
Water Consumption	L/H	3-8
Fan Speed		9
Cooling Pad Size	mm	580*225
Cooling Pad Thickness	mm	40
Material of Blades		
Material of Body		PP body + tank
Weight	kg	16.5 / 19
Product Dimensions (L*D*H)	mm	580*375*1050
Pack Dimensions	mm	590*390*1000

## PORTABLE EVAPORATIVE COOLERS

### PAC280-A

2 YEAR  
WARRANTY

OUBER®



#### Features:

- Efficient and durable spot cooler
- Digital LCD control panel with remote control for easy use
- Air supply distance up to 11m
- Automatic swing louvre function
- Large water tank for longer operation
- Low power consumption
- 3 large cooling pads with pre filters for dust
- Heavy duty wheels with brake function
- Connect to standard garden hose connection for continuous water supply

#### Applications:

- Warehouse, Workshops & Factories
- Agriculture
- Construction sites
- Events & military
- Rental & Emergency



WATCH ME

SPECIFICATIONS	UNIT	PAC280-A
Air Flow	L/S	2,111
Fan Type		Axial
Noise Level	dBa	<63
Motor	kW	0.28
Voltage/Frequency		220~240/50
Current	A	1.3
Plug Connection		3 Pin 10A
Cooling Area	m <sup>2</sup>	up to 50
Air Supply Distance	m	11
Tank Capacity	L	120
Water Consumption	L/H	10
Fan Speed		3
Cooling Pad Size - side/back	mm	698*230 / 700*770
Cooling Pad Thickness - side/back	mm	55 / 75
Material of Blades		Nylon
Material of Body		PP body + tank
Weight	kg	38 / 43
Product Dimensions (L*D*H)	mm	910*490*1380
Pack Dimensions	mm	920*490*1280





## PORTABLE EVAPORATIVE COOLERS

### PACISD - SINGLE DIRECTIONAL

2 YEAR  
WARRANTY

OUBER®

#### Features:

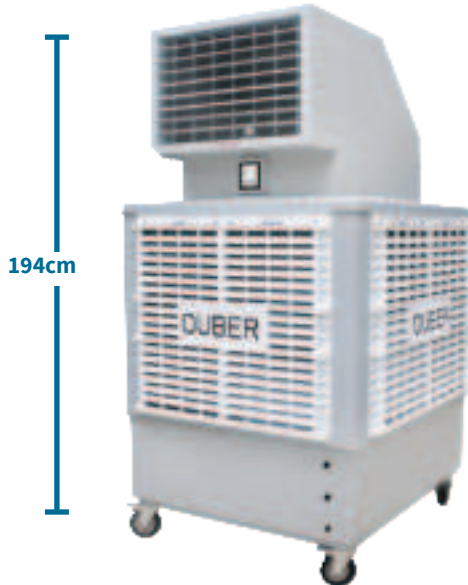
- Efficient and durable spot cooler
- Digital LCD control panel with remote control for easy use
- Air supply distance up to 28m
- Automatic swing louvre function
- Large water tank for longer operation
- Low power consumption
- 4 large cooling pads with pre filters for dust
- Heavy duty wheels with brake function
- Connect to standard garden hose connection for continuous water supply

#### Applications:

- Warehouse, Workshops & Factories
- Agriculture
- Construction sites
- Events & military
- Rental & Emergency



WATCH ME



194cm



AVAILABLE IN DIY KITS - PACISD-PA

SPECIFICATIONS	UNIT	PACISD
Air Flow	L/S	5,000
Fan Type		Axial
Noise Level	dBa	<68
Motor	kW	1.1
Voltage/Frequency		220~240/50
Current	A	7.5
Plug Connection		3 Pin 10A
Cooling Area	m <sup>2</sup>	up to 150
Air Supply Distance	m	28
Tank Capacity	L	300
Water Consumption	L/H	15
Fan Speed		Variable
Cooling Pad Size	mm	700*770
Cooling Pad Thickness	mm	100
Material of Blades		ABS
Material of Body		PP body + Galvanised Steel Tank
Weight	kg	98/120
Product Dimensions (L*D*H)	mm	1080*1080*1940
Pack Dimensions	mm	1080*1080*2150

## PORTABLE EVAPORATIVE COOLERS

### PACIMD - MULTI DIRECTIONAL

2 YEAR  
WARRANTY

OUBER®

#### Features:

- Efficient and durable spot cooler
- Digital LCD control panel with remote control for easy use
- 8 x air outlets
- Adjustable swing louvres
- Large water tank for longer operation
- Low power consumption
- 4 large cooling pads with pre filters for dust
- Heavy duty wheels with brake function
- Connect to standard garden hose connection for continuous water supply

#### Applications:

- Warehouse, Workshops & Factories
- Agriculture
- Construction sites
- Events & military
- Rental & Emergency



WATCH ME



164cm



AVAILABLE IN DIY KITS - PACIMD-PA

SPECIFICATIONS	UNIT	PACIMD
Air Flow	L/S	5,000
Fan Type		Axial
Noise Level	dBa	<68
Motor	kW	1.1
Voltage/Frequency		220~240/50
Current	A	7.5
Plug Connection		3 Pin 10A
Cooling Area	m <sup>2</sup>	up to 150
Air Supply Distance	m	4 per air outlet (8)
Tank Capacity	L	300
Water Consumption	L/H	15
Fan Speed		Variable
Cooling Pad Size	mm	700*770
Cooling Pad Thickness	mm	100
Material of Blades		ABS
Material of Body		PP body + Galvanised Steel Tank
Weight	kg	89/110
Product Dimensions (L*D*H)	mm	1080*1080*1640
Pack Dimensions	mm	1080*1080*1800

# COOLING

## What is a Portable Air Conditioner?

A portable air conditioner is a completely self-contained refrigerated air conditioning system housed within a heavy duty insulated cabinet on wheels. Ideal for applications where an installed system is not viable and for emergency and breakdown applications.



## How does it work?

A portable air conditioner works by using refrigerant to absorb heat from the air in a room and then expelling the heat outside. The refrigerant is a special fluid that can change from a liquid to a gas and back again. When the refrigerant is a liquid, it absorbs heat. When the refrigerant is a gas, it releases heat.



### PORTABLE AIR CONDITIONERS

### IAC-27, IAC-45, IAC-65

1 YEAR  
WARRANTY



**FANMASTER**  
COOLING HEATING VENTILATION EXTRACTION

#### Features:

- Spot cooling in a variety of commercial & industrial applications
- Heavy duty self-contained housing
- Easy to use on/off switch
- Adjustable cooling arms
- Easy to remove condenser tank
- Exhaust duct standard to direct hot air away
- Cleanses and dehumidifies the air
- Compact and easy to move
- Heavy duty wheels with brake function

#### Applications:

- Warehouses, Workshops & Factories
- Commercial Kitchens
- Hospitals & Laboratories
- Emergency Cooling & Server Rooms
- Multi workstations
- Marquee events
- Temporary office cooling
- Equipment spot cooling



SPECIFICATIONS	UNIT	IAC-27	IAC-45	IAC-65
Max Air Flow	L/S	111	222	333
Cooling Capacity	Kw / BTU	2.7 / 9,200	4.5 / 15,300	6.5 / 22,000
Noise Level	dBa	55	60	65
Rated Power	kW	0.95	2	3.3
Voltage/Frequency		220~240V/50Hz	220~240V/50Hz	220~240V/50Hz
Current	A	4.2	9.0	13.5
Plug Connection		3 Pin 10A	3 Pin 15A	3 Pin 15A
Refrigerant		R410A	R410A	R410A
Refrigerant Charge		460 grams (+/-10g)	800 grams (+/-10g)	1050 grams (+/-10g)
No. Of Cool Air Duct		1	3	3
Cooling Duct Diameter	mm	120	120	120
Exhaust Duct Diameter	mm	160	200	250
Fan Speed		2	2	2
Condensation Tank	L	55	60	65
Weight	kg N/G	5	8	13
Product Dimensions	mm	42 / 47	70 / 75	94 / 150
Pack Dimensions	mm	(W)405x(D)430x(H)855	(W)520x(D)480x(H)1035	(W)630x(D)560x(H)1245
Pack Dimensions 1	mm	(W)484 x (D)515 x (H)965	(W)570x(D)610x(H)1110	(W)720x(D)650x(H)1350
Pack Dimensions 2	mm		(W)260x(D)350x(H)370	(W)380x(D)280x(H)515





## PORTABLE AIR CONDITIONERS

### IPAC-47, IPAC-61, IPAC-94

2 YEAR  
WARRANTY



#### Features:

- Premium cooling solution
- Spot & Room mode cooling (dedicated thermostat controls)
- Room mode cools up to 100m<sup>2</sup>
- Heavy duty self-contained housing
- Easy to use LCD control panel
- Adjustable cooling arms
- Easy to remove condenser tank
- Cleanses and dehumidifies the air
- Self-diagnostic system
- Heavy duty wheels with brake function

#### Applications:

- Warehouses, Workshops & Factories
- Commercial Kitchens
- Hospitals & Laboratories
- Emergency Cooling & Server Rooms
- Multi workstations
- Marquee events
- Temporary office cooling
- Equipment spot cooling
- Military use - tents, aircraft hangars



WATCH ME  
IPAC-47



WATCH ME  
IPAC-61



WATCH ME  
IPAC-94

SPECIFICATIONS	UNIT	IPAC-47	IPAC-61	IPAC-94
Air Flow	L/S	189/222	219/264	366/416
Cooling Capacity	Kw / BTU	4.7 / 16,000	6.1 / 21,000	9.4 / 32,000
Power Consumption	kW	1.7	2.1	3.3
Voltage/Frequency		220~240V/50Hz	220~240V/50Hz	220~240V/50Hz
Current	A	7.5	9.5	16.5
Plug Connection		3 Pin 10A	3 Pin 15A	*Fixed Wiring
Refrigerant		R410A	R410A	R410A
Refrigerant Charge		950 grams (+/-10g)	1050 grams (+/-10g)	1500 grams (+/-10g)
EER (Energy Efficient Ratio) BTU/Wh		9.8	-	10.6
Cooling Area (Room Mode)	m <sup>2</sup>	40	50	100
No. Of Cool Air Duct		2	2	3
Fan Speed		2	2	2
Weight	kg	86	88	110
Dimensions	mm	(W)523x(D)671x(H)1042	(W)523x(D)671x(H)1042	(W)660x(D)885x(H)1380
Cable Length	m	3	3	3
Country of Manufacture	m	South Korea	South Korea	South Korea

\* Fixed wiring - a qualified electrician is required to do any fixed wiring work for this appliance

## PORTABLE AIR CONDITIONER (REVERSE CYCLE)

### IPHC-35

1 YEAR  
WARRANTY



#### Features:

- Perfect all year round solution
- Cooling, Heating & Auto Modes
- 4kW Cooling capacity
- 4.3kW Heating capacity
- Self-diagnostic function
- 6 Speeds
- 143 L/s Airflow
- 32m<sup>2</sup> cooling area
- Heavy duty self-contained housing
- Easy to use LCD control panel
- Easy to remove condenser tank
- Heavy duty wheels with brake function

#### Applications:

- Warehouses Workshops Factories
- Agricultural
- Hospitality
- Offices
- Showrooms
- Events (tents/marquees)

SPECIFICATIONS	UNIT	IPHC-35
Capacity		
Cooling	Kw / BTU	4 / 13,600
Heating		4.3 / 14,800
Air Flow	L/S	143
Power Consumption		
Cooling	kW	1.58
Heating		1.41
Voltage/Frequency		
Current	A	7
Cooling		6.36
Heating		
Plug Connection		3 Pin 10A
Refrigerant		R410A
Refrigerant Charge		1,100g
EER (Energy Efficient Ratio)	BTU/Wh	11
Air Grill		1
Fan Speed		6
Condensation Tank	L	12
Cooling Area	m <sup>2</sup>	32
Product Dimensions	mm	523x670x1044
Pack Dimensions	mm	545x695x1110
Weight	kg	86



**FANMASTER**  
COOLING HEATING VENTILATION EXTRACTION

*More than fans*

While people often know us best for our cooling solutions (the “Fanmaster” name does give it away), we also offer a whole range of ventilation and extraction equipment that’s perfect for commercial and industrial settings.

## Get In Touch



### Address

Unit 1/6-8 Yalgar Rd,  
Kirrawee NSW 2232



### Email

[sales@fanmaster.com.au](mailto:sales@fanmaster.com.au)



### Phone

1300 900 345



### Website

[www.fanmaster.com.au](http://www.fanmaster.com.au)