



Nintendo Game Boy Advance SP Motherboard Replacement

This guide provides a step by step guide on how to get the motherboard out of the way so you can access the button panel.

Written By: DJ Pantone



INTRODUCTION

The motherboard is the green electrical plate that runs the device. Without the motherboard, the device will not function. This is why we advise against removing the motherboard from the system. Any accidental tug can tear the golden ribbon cable. If that happens you now have more problems than you came here with in the first place!



TOOLS:

- [Phillips #00 Screwdriver](#) (1)
 - [iFixit Opening Tool](#) (1)
 - [Tri-point Y1 Screwdriver](#) (1)
-

Step 1 — Battery



- Use a standard Phillips #00 screwdriver to loosen the 4 mm screw that keeps the battery cover attached to the device.

Step 2



- Lift the battery cover up and remove it from the device.
- ⓘ The screw will remain attached to the battery cover because of Nintendo's design.

Step 3



- Use your fingers or a plastic opening tool to remove the battery from the device.

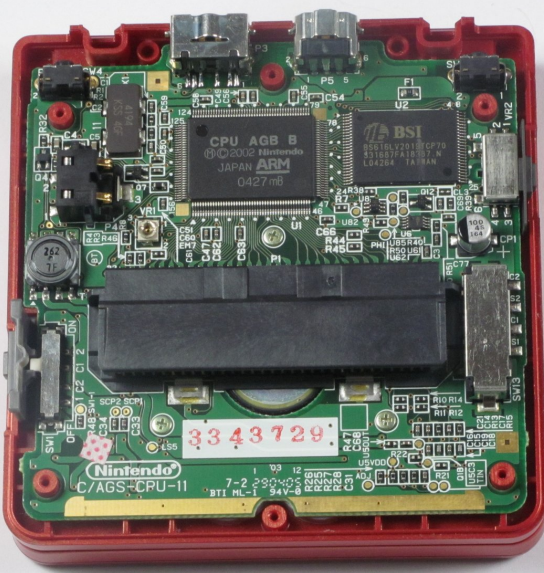
⚠ Caution: Please exercise caution when handling the battery. If it appears to be swelling or damaged at all it is considered a fire hazard.

Step 4 — Back Cover



- Remove four 6.5 mm screws from the corners of the back cover using a tri-point Y00 screwdriver.
- Remove two 4.6mm screws from the top-center and bottom-center of the device using a tri-point Y00 screwdriver.

Step 5

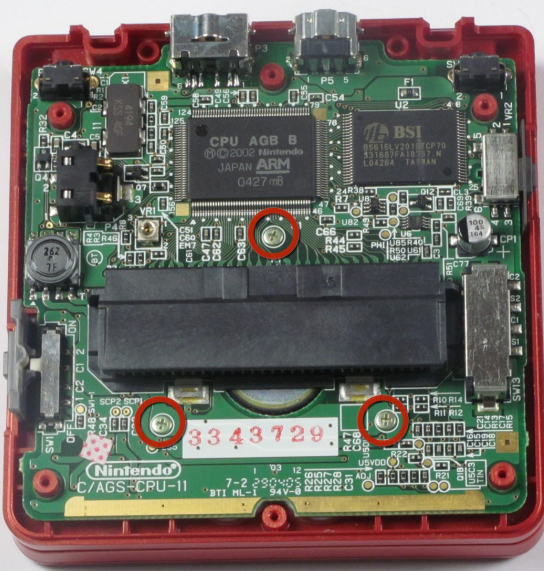


- Lift the back cover off of the device.

⚠ Potential for device damage: These inner components are vulnerable to static electricity. Exercise caution when handling these next steps to prevent damaging the device.

- ☑ Look out for the power switch that can fall out when taking the back cover off.

Step 6 — Motherboard



- Using a Phillips #00 screwdriver, remove the three Phillips #00 4 mm long screws that hold the motherboard to the button panel.

Step 7



⚠ Be careful not to tear the ribbon cable that's connected to the screen. If you tear it, games will not appear on the device's screen!

- Flip the motherboard up and rest it on the other half of the device, so that the back of the buttons are visible as seen in the picture.

To reassemble your device, follow these instructions in reverse order.