

# Supervisory and E2E Controller Weather ADF and DSC Installation Instructions

## Instruction Guide

### Overview

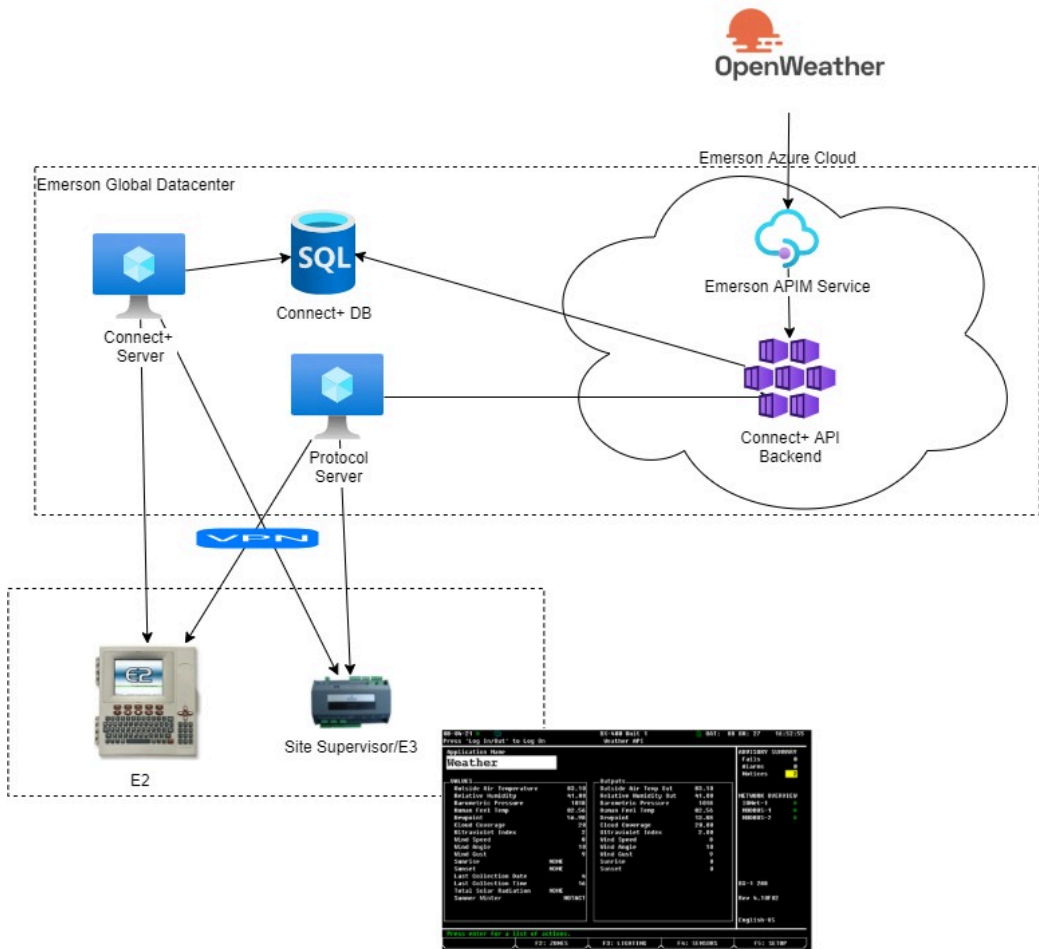
This document explains how to install the Weather Extension Module onto Supervisory and E2E controllers.

### Weather ADF and DSC Versions

| ADF and DSC Names | Controller Type    | Supported Versions |
|-------------------|--------------------|--------------------|
| 531-0300.adf      | E3/Site Supervisor | 2.16F02 and later  |
| 527-0901.dsc      | E2E                | 4.01 and later     |

### Connect+ API Deployment

Connect+ API Deployment - Emerson Hosted



## Installing the Weather Extension Module - ADF (Supervisory Controllers)

An ADF is an Application Description File. Contact your Sales representative or Customer Service to obtain the Weather ADF. This can be uploaded on a Supervisory controller using the File Management screen. A license key is NOT required to activate the single instance application after the ADF has been uploaded. Email: [Solutions.CustomerService@Emerson.com](mailto:Solutions.CustomerService@Emerson.com)

### Prerequisites

You will need the following:

1. The Weather Extension Module built for your version of Supervisory controller firmware.

### Installation Steps

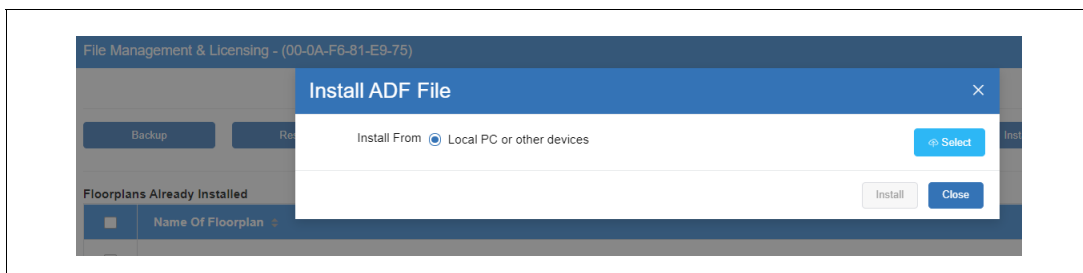
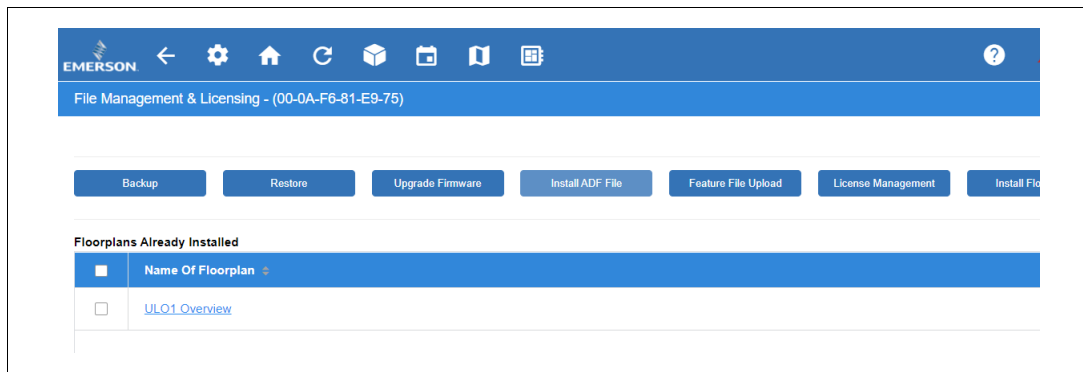
#### Step 1 – Obtain ADF and License

Obtain the correct ADF for the Supervisory controller firmware version on the target unit.

#### Step 2 – Installing ADF

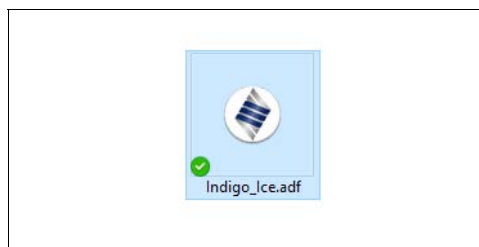
Install the Weather Extension Module ADF onto the Supervisory controller using the **Install ADF File** button and upload the features of the Supervisory controller.

1. First, go to the gear icon  > **Configure System** > **File Management & Licensing** > **Install ADF File** button.
2. Click **Install ADF File** then click **Select**.

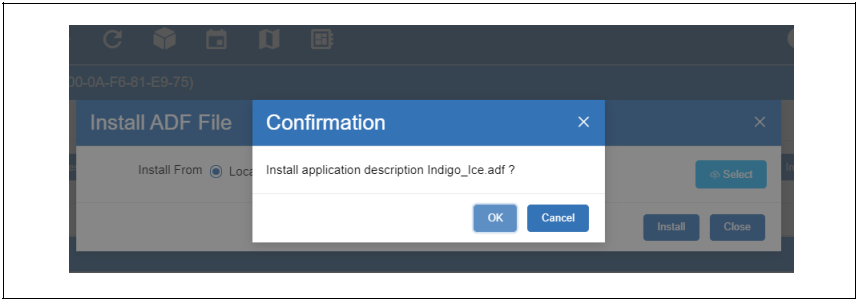
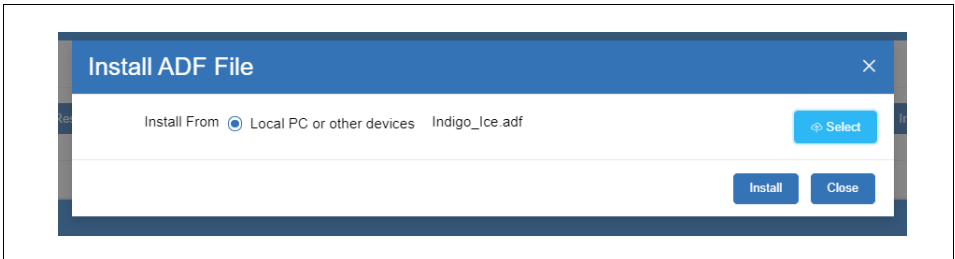


#### Step 3 – Browsing for the ADF on PC

1. Select the **ADF** on your PC. (For this example, *Indigo\_Ice.adf* is used).

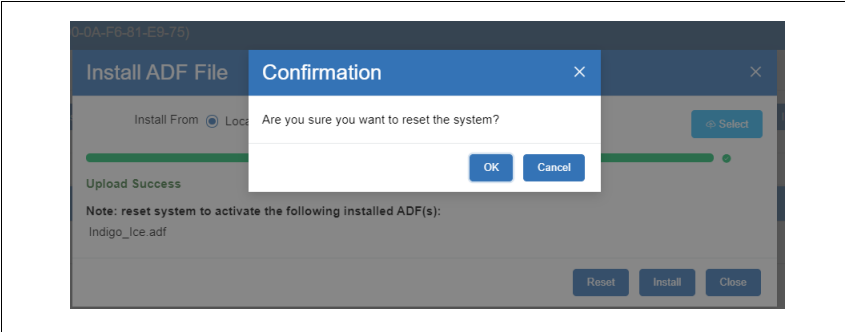
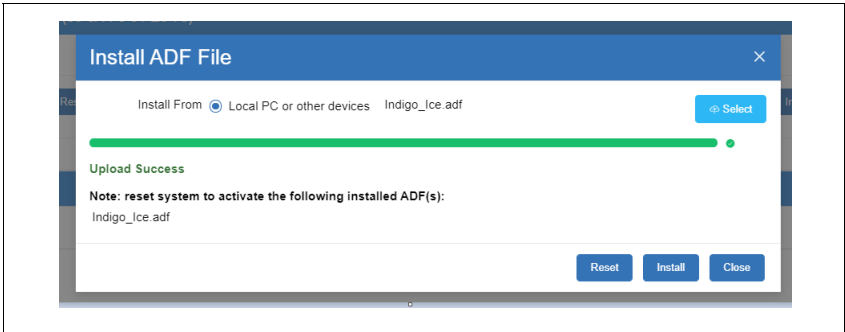


2. Click **Install** then confirm **OK**.



**Step 4 – Loading the ADF**

1. Once the ADF loads, click **Reset** then **OK** to reset system.



## Installing the Weather Extension Module - DSC (E2E Controllers)

A DSC is an Description File. Contact your Sales representative or Customer Service to obtain the Weather DSC. The DSC can be uploaded on an E2E controller using UltraSite. A license key IS required to activate the single instance application after the DSC has been uploaded. Email: [Solutions.CustomerService@Emerson.com](mailto:Solutions.CustomerService@Emerson.com) or contact Emerson Customer Service.

### Prerequisites

You will need the following:

1. The Weather Extension Module built for your version of Supervisory controller firmware.

### Installation Steps

#### Step 1 – Obtain DSC and License

Obtain the correct DSC for the Supervisory controller firmware version on the target unit.

#### STEP 2: Upload the Description (.dsc) File (xxx-xxxx) to the E2E Controller

1. Select the controller in UltraSite.
2. Right-click the controller and select **Upload Description File**:

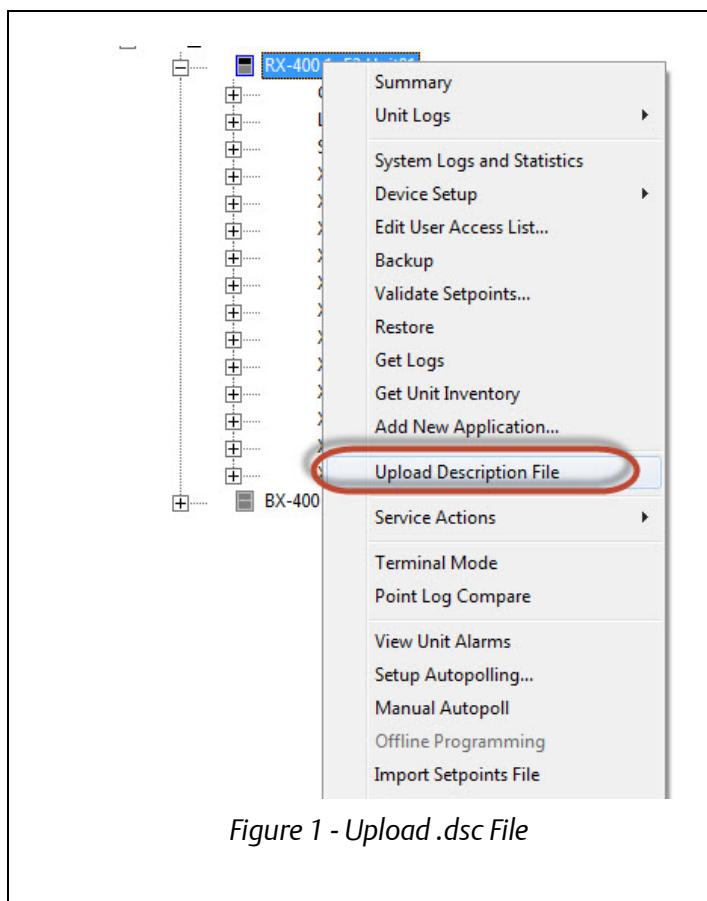


Figure 1 - Upload .dsc File

3. Select **Browse** to go to location where the description (.dsc) file was saved:

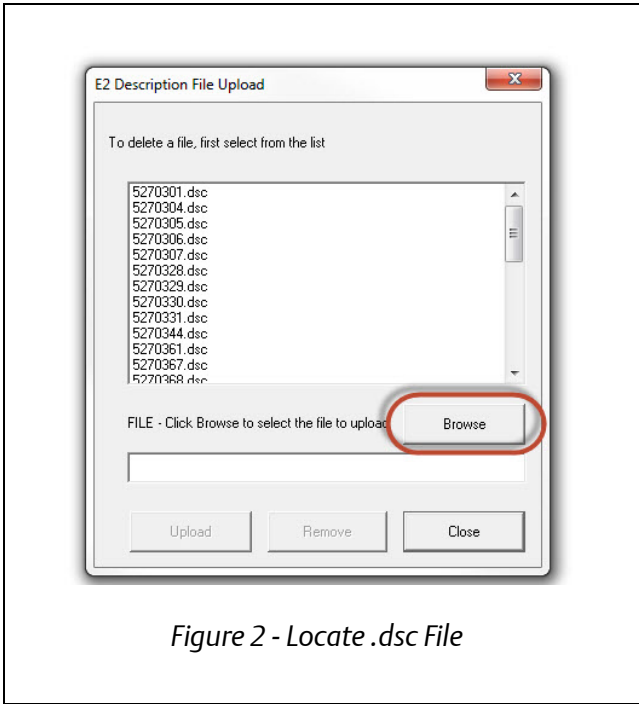


Figure 2 - Locate .dsc File

4. Select the desired description (.dsc) file and click **Open**:

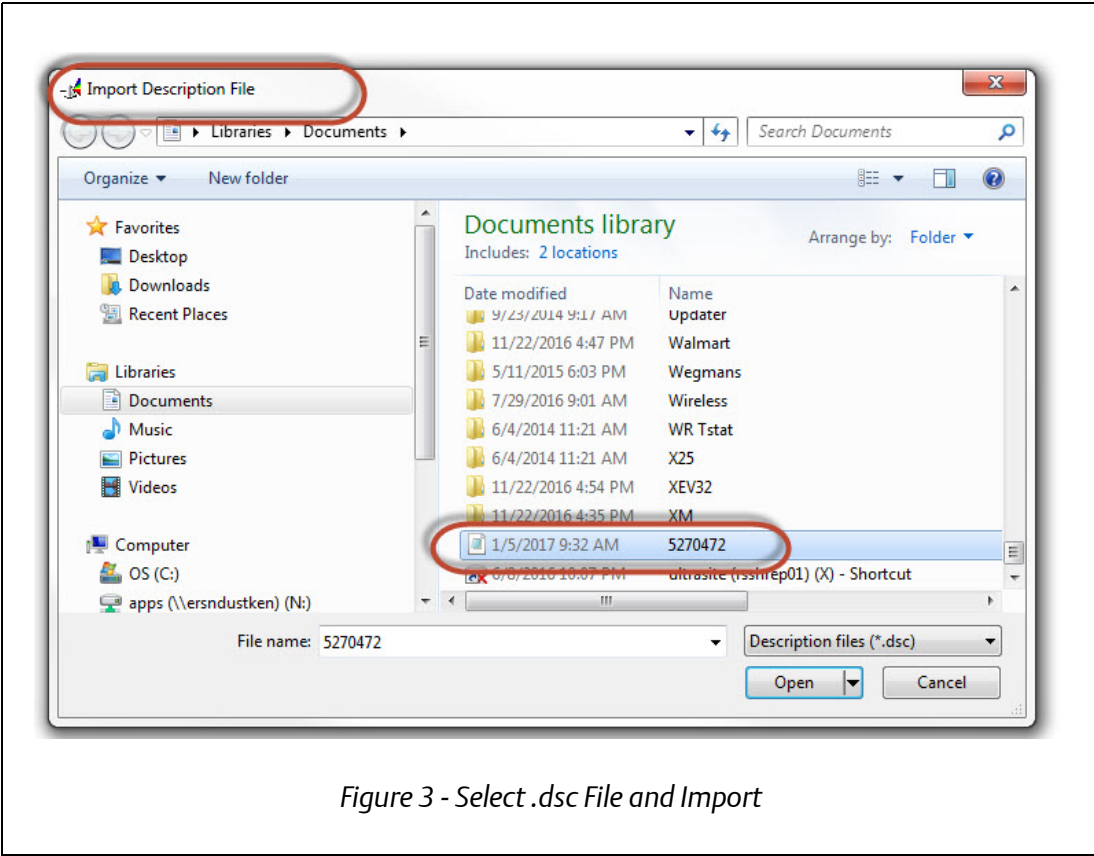
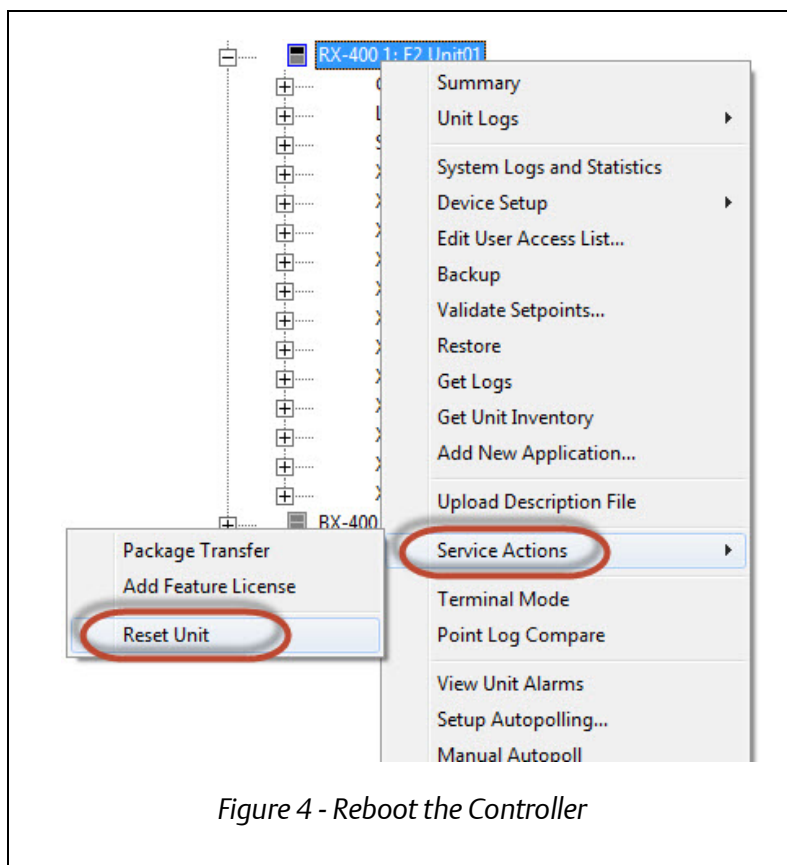


Figure 3 - Select .dsc File and Import

5. Right-click the controller. Under **Service Actions**, select **Reset Unit** to reboot. The controller must be rebooted to see the description (.dsc) file:



6. After the controller reboots, in the navigation tree, go to **Device Setup>Network Board Setup** to add the device:

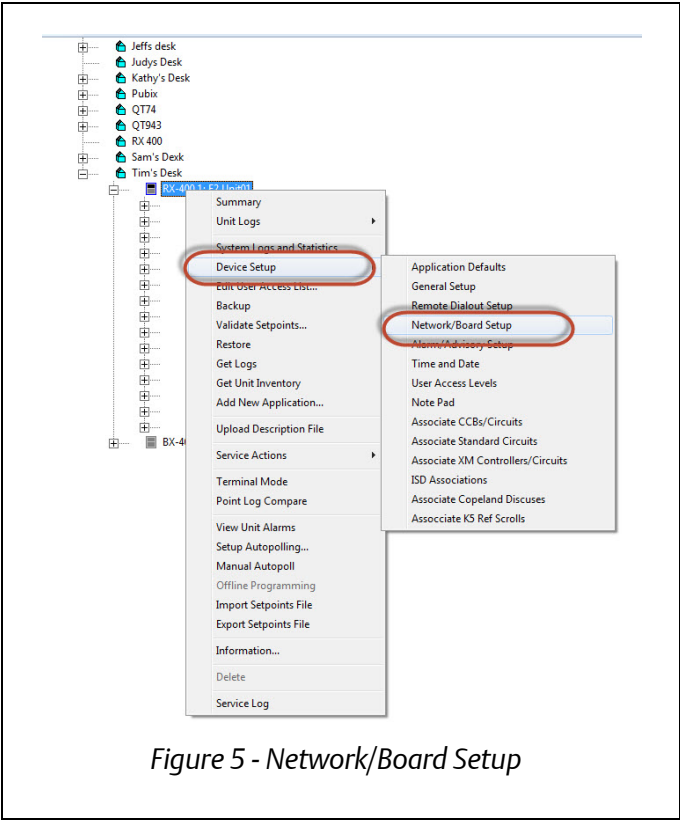


Figure 5 - Network/Board Setup

7. Select **Add Ctr/IO** to add a device:

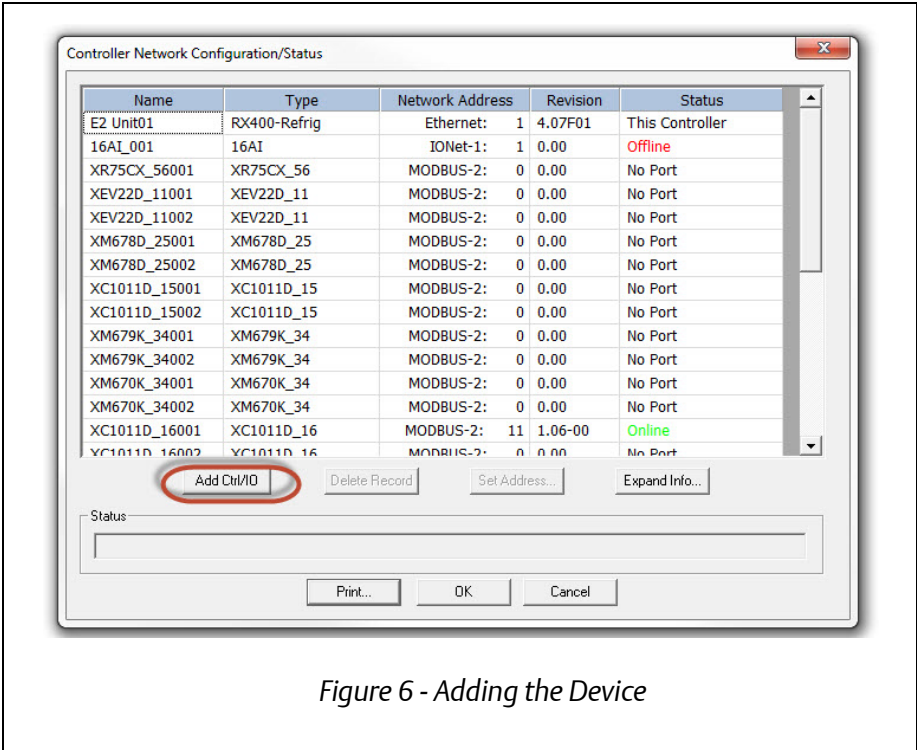


Figure 6 - Adding the Device

8. Select the **ECT Devices** tab and select the desired device. Enter the number of devices and set up the Com port address and commission the devices as usual:

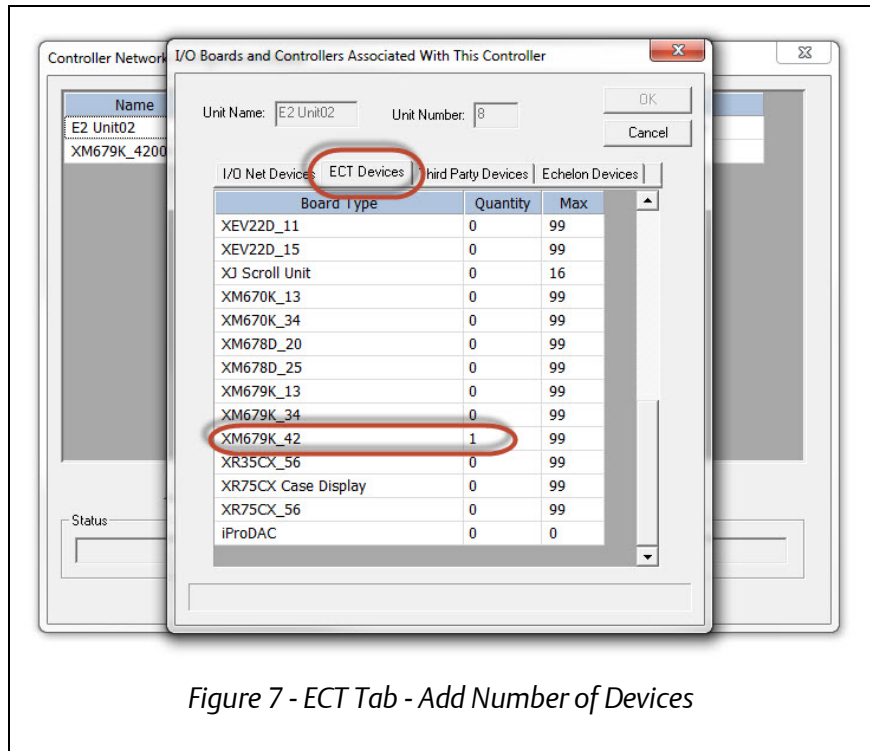


Figure 7 - ECT Tab - Add Number of Devices

## License Key Installation

When licensed products are purchased from Emerson, the customer provides Emerson with (1) the types of features to be purchased, (2) the quantity of features to be purchased, and (3) the unique MAC address of each controller in which the features will be enabled. Emerson then returns the customer a report that contains a set of 16-character license keys and if necessary one or more description files that must be loaded into the E2 to allow the selected devices to communicate with the E2.

## Installation Steps

License keys must be entered from the front panel of the E2, or by using UltraSite32 or Connect+ in Terminal Mode.

1. Press **Log In/Out** and enter your username and password. You must be level 4 or above to enter a license key.
2. After logging in, press **Alt + T** and check that the **MAC Address** field on the TCP/IP screen (Figure 1) matches the MAC address in the report given to you from Emerson. The license key will not work unless the MAC address matches exactly. If the MAC address matches, go to step 3.

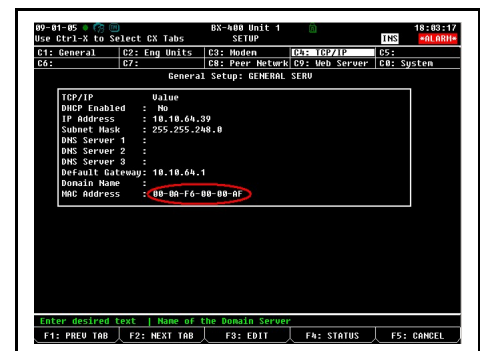


Figure 1 - MAC Address Screen



3. Press **Menu**, **7**, **9** to access the License Manager Screen (Figure 2).
4. Press **F1** to access the Activate Feature box.
5. Enter the 16-character license key in the blanks provided.
6. If entered correctly, the message at the bottom of the **Add Feature** box should read **Feature Activated**. Press **ESC** to exit and save.

If the key is incorrect, the message will read "Feature Unknown or Invalid Key" — double-check that the key was entered correctly and the MAC address matches the one specified in the report.

Repeat steps 1 through 6 for each license key to be entered for this E2.

## Rebooting to Complete License Key Activation

When all license keys have been entered for the E2, you must reboot the E2 unit to complete the license key activation process. Press the **RESET** button on the E2 processor board.

When the E2 is finished rebooting, login again and press **Menu**, **7**, **9**, and verify the features are listed as enabled. They will be shown in this screen along with the license key(s) you entered to enable them (Figure 3).

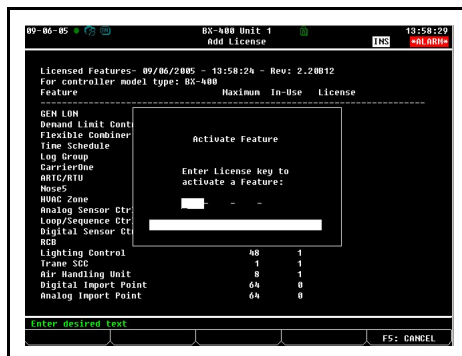


Figure 2 - Add License Screen

| Feature            | Value    | License             |
|--------------------|----------|---------------------|
| ID Control         | 28       | 0                   |
| HVAC Simulation    | 16       | 0                   |
| Conversion Cell    | 128      | 0                   |
| Holiday Schedule   | 64       | 0                   |
| Anti-Sweat Control | 48       | 0                   |
| Heat/Cool Control  | 32       | 0                   |
| 16A1               | 16       | 0                   |
| 880                | 32       | 0                   |
| 880                | 16       | 0                   |
| 440                | 16       | 0                   |
| Echelon 16A1       | 32       | 0                   |
| Echelon 880        | 16       | 0                   |
| Digital Combiner   | 128      | 0                   |
| Pulse Accumulation | 64       | 0                   |
| LonWorks Network   | No Limit | 0                   |
| Ethernet Network   | No Limit | 0                   |
| Color Display      | No Limit | 0                   |
| Web Services       | No Limit | 0                   |
| Lennox IMC         | 31       | 889F-075E-1921-FD78 |
| Power Monitoring   | 64       | 0                   |
| 16A2               | 16       | 0                   |
| Analog Combiner    | 128      | 0                   |

Figure 3 - Viewing Licenses