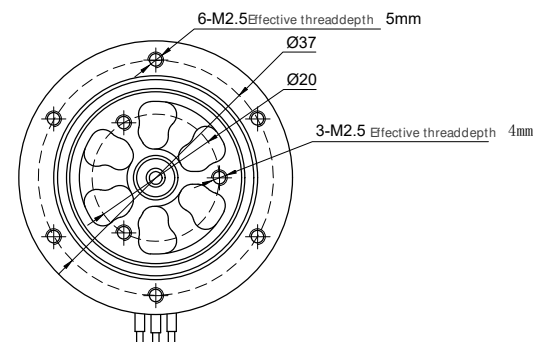
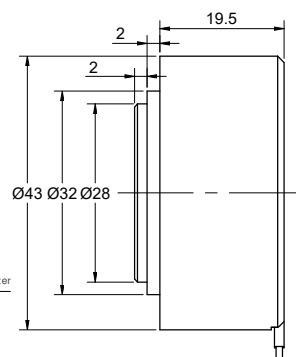
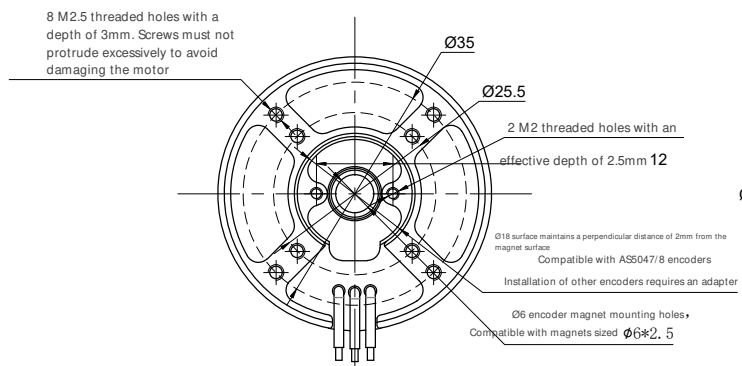


With front cover

General tolerance ranges for untoleranced dimensions

≤ 6	$>6 \leq 30$	$>30 \leq 120$	$>120 \leq 400$	$>400 \leq 2000$
± 0.1	± 0.2	± 0.3	± 0.5	± 1.0



Without front cover

Front cover functions to retain bearings. The coverless configuration is intended for motor mounting positions where bearing retention is achievable, enabling reduced installation height.

This configuration is an incomplete structure prior to final assembly. The motor must NOT be energized, as uncontrolled rotation poses a risk of rotor dislodgement.