

# How to clean the dust container of my Philips Bagless Vacuum

If your Philips Vacuum is equipped with a dust container and you would like to know how to clean it, please follow these step-by-step instructions.

## Instructions to clean your Philips Vacuum's dust container

You can follow the steps below to clean the dust container of your Philips Vacuum

1. Empty the container in the bin of your Philips Vacuum
2. Remove the filter from the container (if it has one)
3. Clean the inside of the dust container with a moist cloth (do not put it in the dishwasher and do not immerse it in water)
4. When the container is fully dry, place the filter back in it
5. Place the container back into your Philips Vacuum

## How should I clean the filter of my Philips vacuum cleaner?

If you would like to know how to clean the filters of your Philips Vacuum, please find the answer in the following lines.

### Cleaning the filter in vacuum cleaners with bag

If your Philips Vacuum has a bag, then you need to take into account the following cleaning tips for its filters:

- Motor protection filter:

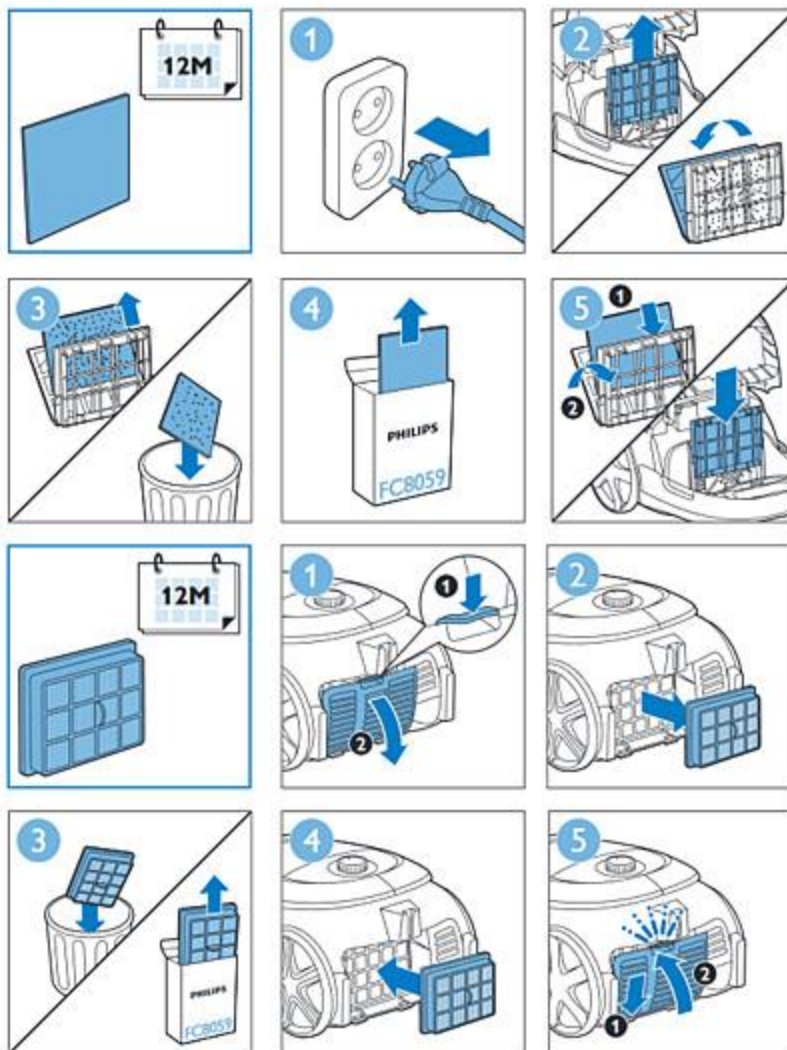
The motor protection filter is located behind the dust bag. If you remove the dust bag holder with the dust bag, you will see the motor protection filter.

This filter needs to be replaced once a year. It cannot be washed.

- Exhaust filter:

The exhaust filter is located on the back (or at the bottom in some cases) of your Philips vacuum, behind a removable grille.

This filter needs to be replaced once a year. It cannot be washed.



## Cleaning the filter in bagless vacuum cleaners

If your Philips Vacuum is a bagless model, then read here how to clean the motor protection filter:  
The motor protection filter is usually located in or behind the dust container. Please check the images below for some examples.

This filter consists of two different parts: A) a plated part (called HEPA/EPA or allergy filter) and B) a foam part:

A) The plated part (EPA/HEPA or allergy filter) cannot be washed. You can clean it by tapping it over a bin or brushing it.

B) The foam part can be washed with water. **It needs to be fully dry** before you can place it back in the vacuum.

