

PRODUCT NOTICE

PRODUCT NAME

Hand LF Tool---Part No.: HW71012-SGY-330

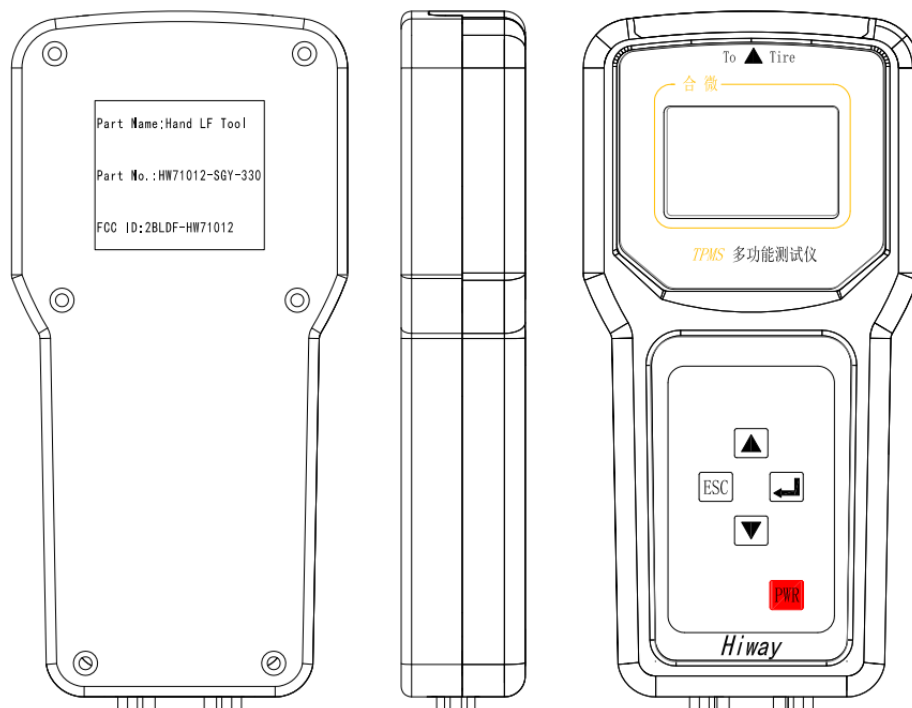
Function Summary

The hand LF tool activates the tire pressure sensor with a low-frequency 125KHZ signal and receives the 433.92MHZ signal from the sensor to read the sensor information.

PRODUCT SPECIFICATION

Parameter	Specification
Low Frequency	125KHz,ASK
High Frequency	433.92MHz,FSK
CAN Frequency	500Kbps
Battery capacity	3.7V,2600mAh
Recharge port	USB 5V,600mA
Working Temperature	-20~55℃
Storage Temperature	-40~60℃
Product dimension	165mmx80mmx31mm

PRODUCT APPEARANCE



PRODUCT NOTICE

FCC CERTIFICATION

Model: HW71012-SGY-330 FCC ID: 2BLDF-HW71012

FCC Statement:

This device complies with part 15 of the FCC Rules. Operation is subject to the following two conditions: (1) This device may not cause harmful interference, and (2) this device must accept any interference received, including interference that may cause undesired operation.

NOTE: This equipment has been tested and found to comply with the limits for a Class B digital device, pursuant to part 15 of the FCC Rules. These limits are designed to provide reasonable protection against harmful interference in a residential installation. This equipment generates, uses and can radiate radio frequency energy and, if not installed and used in accordance with the instructions, may cause harmful interference to radio communications. However, there is no guarantee that interference will not occur in a particular installation. If this equipment does cause harmful interference to radio or television reception, which can be determined by turning the equipment off and on, the user is encouraged to try to correct the interference by one or more of the following measures:

- Reorient or relocate the receiving antenna.
- Increase the separation between the equipment and receiver.
- Connect the equipment into an outlet on a circuit different from that to which the receiver is connected.
- Consult the dealer or an experienced radio/TV technician for help.

MODIFICATION: Any changes or modifications not expressly approved by the grantee of this device could void the user's authority to operate the device.

This equipment complies with FCC radiation exposure limits set forth for an uncontrolled environment and meets the FCC radio frequency (RF) Exposure rules as this equipment has very low levels of RF energy.