

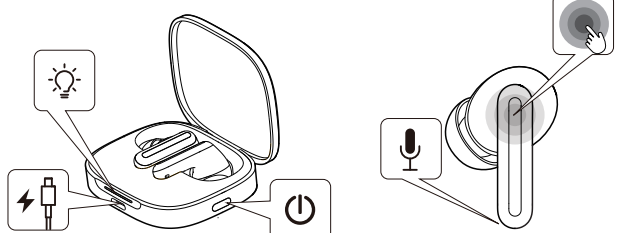


K:100

## Redmi Buds 6 User Manual

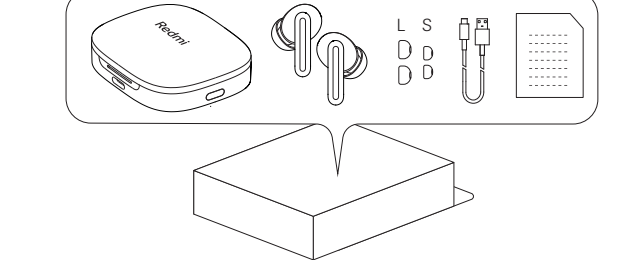
### Product Overview

Read this manual carefully before use, and retain it for future reference.



### Package Contents

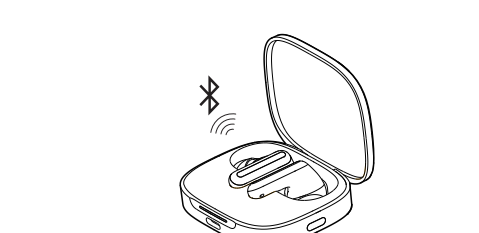
Please wear the earbuds in the correct orientation and gently rotate them to a secure and comfortable position.



01

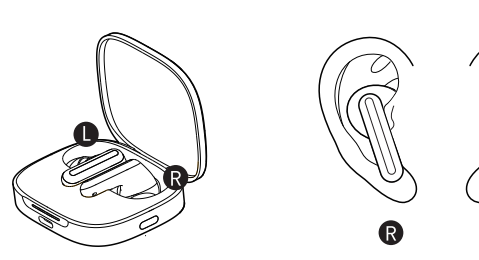
### First time using

Open the charging case lid, the indicator light flashes, and the earbuds enter Bluetooth pairing mode.



### Wearing

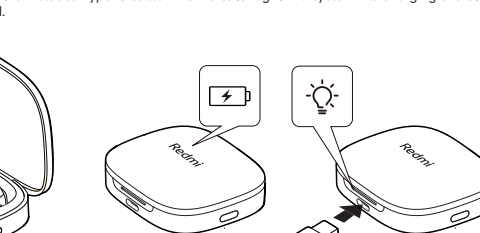
Please wear the earbuds in the correct orientation and gently rotate them to a secure and comfortable position.



02

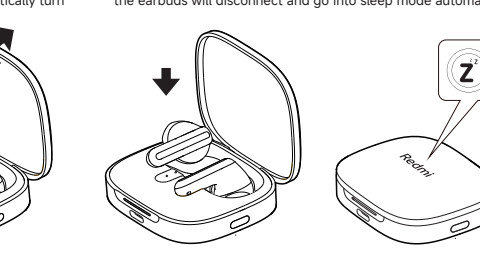
### Charging

To charge the earbuds: Place the earbuds in the charging case and close the lid to start charging.



### Turning on

When opening the charging case, the earbuds will automatically turn on.



03

### Connect & Pair

1. Open the case lid, hold the function key for 2 seconds until the light flashes, putting the earbuds in pairing mode.

2. Activate your device's Bluetooth, find and connect to the earbuds in the menu.

Note: Opening the case lid for the first time automatically activates pairing mode.

In daily use, opening the charging case lid will automatically reconnect the earbuds to the last paired Bluetooth device. (Bluetooth device must be within earbuds' connection range.)

\*Xiaomi Earbuds app supports mobile phones with Android 6.0 and above and iOS 14.0 and above.

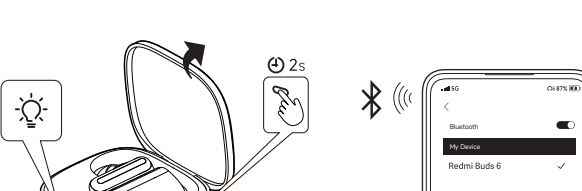
\*Please upgrade the app to the latest version.

\*Dual-Device Connection

Connect the earbuds to two Bluetooth devices simultaneously for added convenience.

After connecting the earbuds to the first device, place them in the charging case with the lid open. Press and hold the function button for 2 seconds until the indicator light blinks white, indicating the earbuds are ready to pair with a second device.

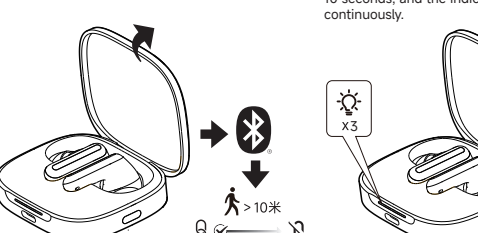
Note: Dual device connection is off by default, if you need to use it, please turn on this function in the Xiaomi Earbuds App.



04

### Connection Disconnect

Note: Gesture operations can be customized via the Xiaomi Earbuds App.



### Function Overview

Double-tap: Answer/Hang up

Triple-tap: Reject

Music:

Double-tap: Play/Pause

Triple-tap: Next track

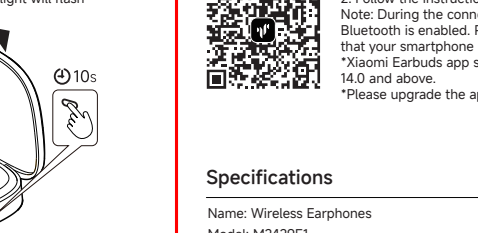
Long press for 2 seconds:

Transparency Noise Canceling Off

05

### Restoring Factory Settings

With the lid open, long press the function button for 10 seconds, and the indicator light will flash continuously.



### Connecting with App

1. Scan the QR code to download and install Xiaomi Earbuds to enable more features.

2. Follow the instructions on the app to connect the earbuds.

Note: During the connection process, please make sure that the smartphone's Bluetooth is enabled. Put the earbuds into the charging box, open the lid, and ensure that your smartphone is near the box.

\*Xiaomi Earbuds app supports mobile phones with Android 6.0 and above and iOS 14.0 and above.

\*Please upgrade the app to the latest version.

06

### Specifications

Name: Wireless Earphones

Model: M2429E1

Earbuds Input: 5 V  $\approx$ 150 mA

Charging Case Input: 5 V  $\approx$ 500 mA

Charging Case Output: 5 V  $\approx$ 300 mA

Charging Port: Type-C

Wireless Connectivity: Bluetooth® 5.4

Operating Temperature: 0°C to 45°C

Wireless Range: 10 m (open space without obstacles)

Operation Frequency: 2400 MHz to 2480 MHz

Maximum Transmit Power: <20 dBm (for EU)

The power delivered by the charger shall be between min (0.2) Watts required by the radio equipment, and max (2.5) Watts in order to achieve the maximum charging speed.

Note: Due to the connection characteristics of the Bluetooth signal, in dense environments with 2.4 GHz electromagnetic signal interferences, there may be occasional disconnects or no sound.

Compatible with: This product only supports certain Android or iOS systems. For detailed information, please check the product page on [www.mi.com](http://www.mi.com).

07

### WEEE Information

All products bearing this symbol are waste electrical and electronic equipment (WEEE as in directive 2012/19/EU) which should not be mixed with unsorted household waste. Instead, you should protect human health and the environment by handing over your waste equipment to a designated collection point for the recycling of waste electrical and electronic equipment, appointed by the government or local authorities. Correct disposal and recycling will help prevent potential negative consequences to the environment and human health. Please contact the installer or local authorities for more information about the location as well as terms and conditions of such collection points.

CE mark is applicable to product and built-in battery.

Hereby, Xiaomi Communications Co., Ltd. declares that the radio equipment type M2429E1 is in compliance with Directive 2014/53/EU and Regulation (EU) 2023/1542. The full text of the EU declaration of conformity is available at the following internet address:

<http://www.mi.com/global/service/support/declaration.html>

UKCA mark is applicable to product and built-in battery.

Hereby, Xiaomi Communications Co., Ltd. declares that the radio equipment type M2429E1 is in compliance with Radio Equipment Regulations 2017. The full text of the UKCA declaration of conformity is available at the following internet address: <https://www.mi.com/uk/service/support/declaration.html>

Important Safety Information

Before using and operating this device, read the following precautions to ensure an optimal device performance and avoid dangerous use or unauthorized operations:

- Product information and certification marks are located in the charging case.

- To prevent possible hearing loss, do not use this product at high volume for long periods of time.

- Do not use the earbuds while driving, and comply with the relevant regulations in your region or country.

- Only use the power adapters that comply with the local safety standards or certified and supplied by qualified manufacturer.

- Do not disassemble, strike, crush or throw the product into fire, as it may cause an explosion.

- The product has a built-in battery that can not be removed or replaced. To avoid damage to the battery or the product, do not disassemble or modify the battery by yourself. The battery can only be replaced by the authorized service providers and must be replaced with the same type. Replacement of a battery with an incorrect type may defeat a safeguard (such as catching fire, explosion and leakage of corrosive electrolyte). Do not put the battery in trash that is disposed of in landfills. When disposing of the battery, comply with local laws or regulations.

- Disposal of a battery into fire or a hot oven, or mechanically crushing or cutting of a battery, that can result in an explosion.

08

### FCC RF Exposure Information (SAR)

This device is designed and manufactured not to exceed the emission limits for exposure to radio frequency (RF) energy set by the Federal Communications Commission of the United States.

The SAR limit set by the FCC is 1.6W/kg.

The FCC has granted an Equipment Authorization for this model device with all reported SAR levels evaluated as in compliance with the FCC RF exposure guidelines.

09

### ISED Notice

This device complies with Innovation, Science and Economic Development Canada license-exempt RSS standard(s). Operation is subject to the following two conditions:

(1) this device may not cause interference, and

(2) this device must accept any interference, including interference that may cause undesired operation of the device.

Le présent appareil est conforme aux CNR d'Innovation, Sciences et Développement économique Canada applicables aux appareils radio exempts de licence. L'exploitation est autorisée aux deux conditions suivantes:

(1) l'appareil ne doit pas produire de brouillage, et

(2) l'utilisateur de l'appareil doit accepter tout brouillage radioélectrique subi, même si le brouillage est susceptible d'en

09

### FCC Regulations:

This device complies with part 15 of the FCC Rules. Operation is subject to the following two conditions: (1) This device may not cause harmful interference, and (2) this device must accept any interference received, including interference that may cause undesired operation.

This device has been tested and found to comply with the limits for a Class B digital device, pursuant to Part 15 of the FCC Rules. These limits are designed to provide reasonable protection against harmful interference in a residential installation. This equipment generates, uses and can radiate radio frequency energy and, if not installed and used in accordance with the instructions, may cause harmful interference to radio communications. However, there is no guarantee that interference will not occur in a particular installation. If this equipment does cause harmful interference to radio or television reception, which can be determined by turning the equipment off and on, the user is encouraged to try to correct the interference by one or more of the following measures:

-Reorient or relocate the receiving antenna.

-Increase the separation between the equipment and receiver.

-Connect the equipment into an outlet on a circuit different from that to which the receiver is connected.

-Consult the dealer or an experienced radio/TV technician for help.

Caution: Changes or modifications not expressly approved by the party responsible for compliance could void the user's authority to operate the equipment.

08