

User Manual

SpeedyBee F745 35A BLS AIO

contents

Part 1 - OverView

▪ Specifications	1
▪ Dimensions	2
▪ Package	3
▪ Layout	4

Part 2 - Flight Controller

▪ Wiring Diagram	5
▪ App	6
▪ FC Firmware Update	7
▪ BlackBox Analyzer	8

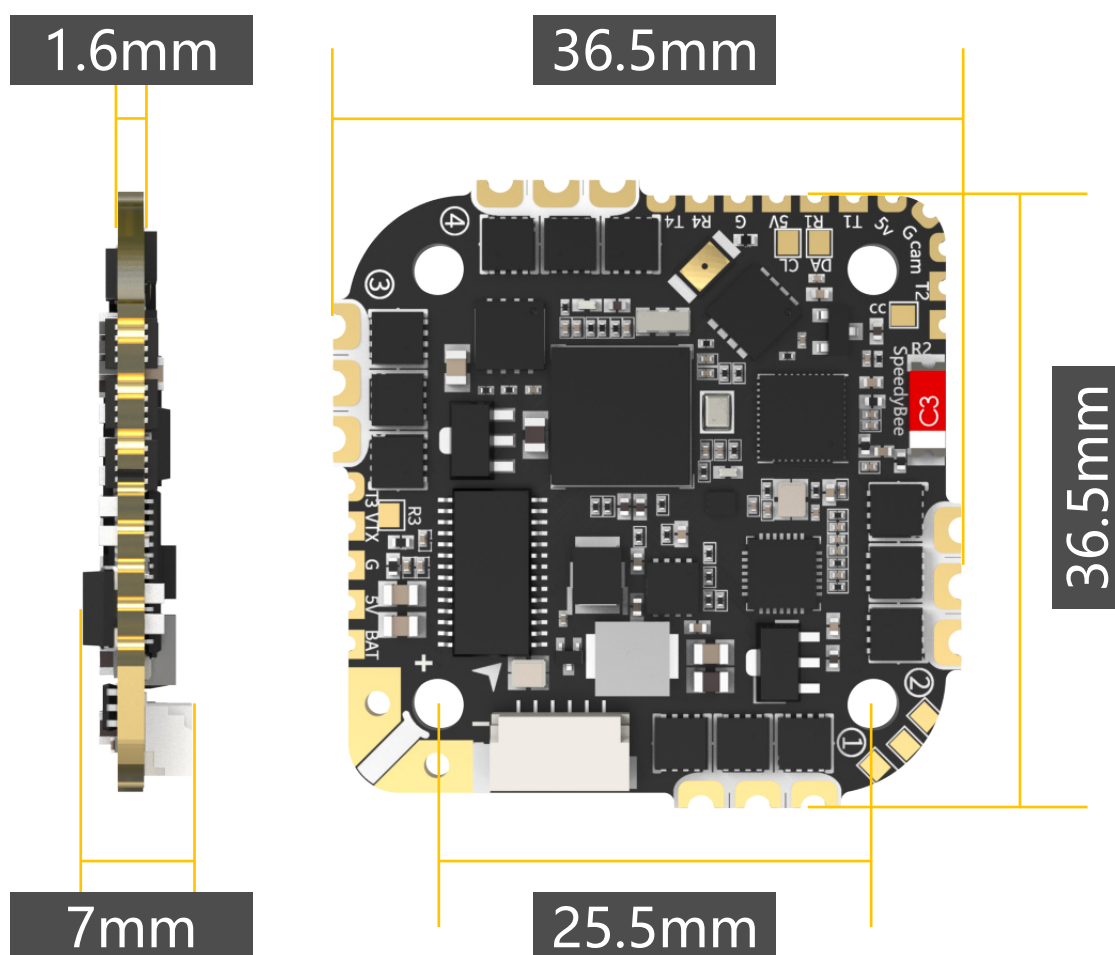
Part 3 - ESC

▪ Connection with Motors & Power Cable	9
▪ ESC Configuration	10
▪ ESC Firmware Update	11

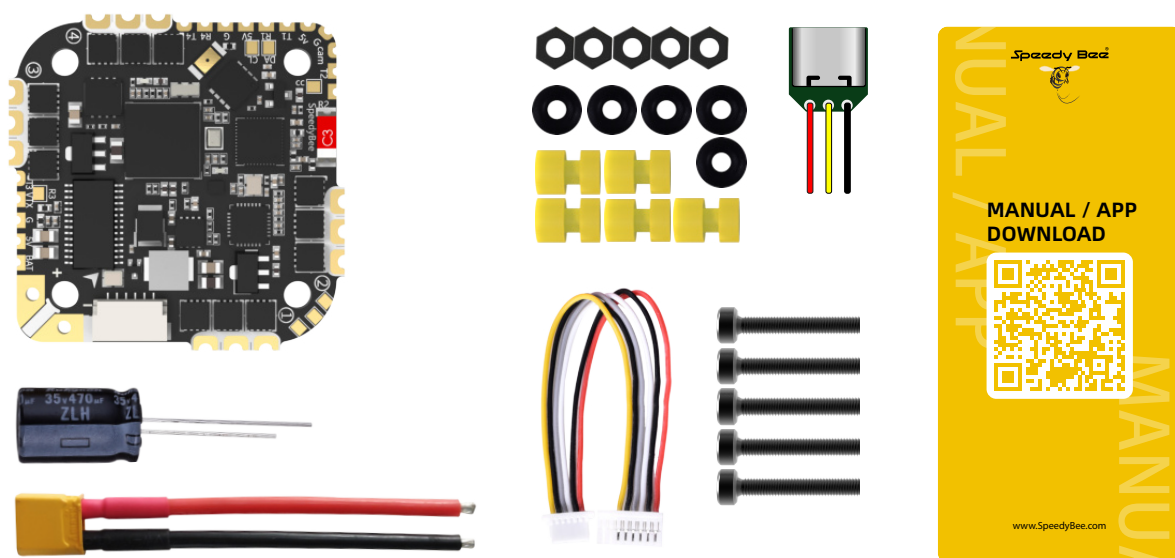
Part 1 - OverView

Specifications

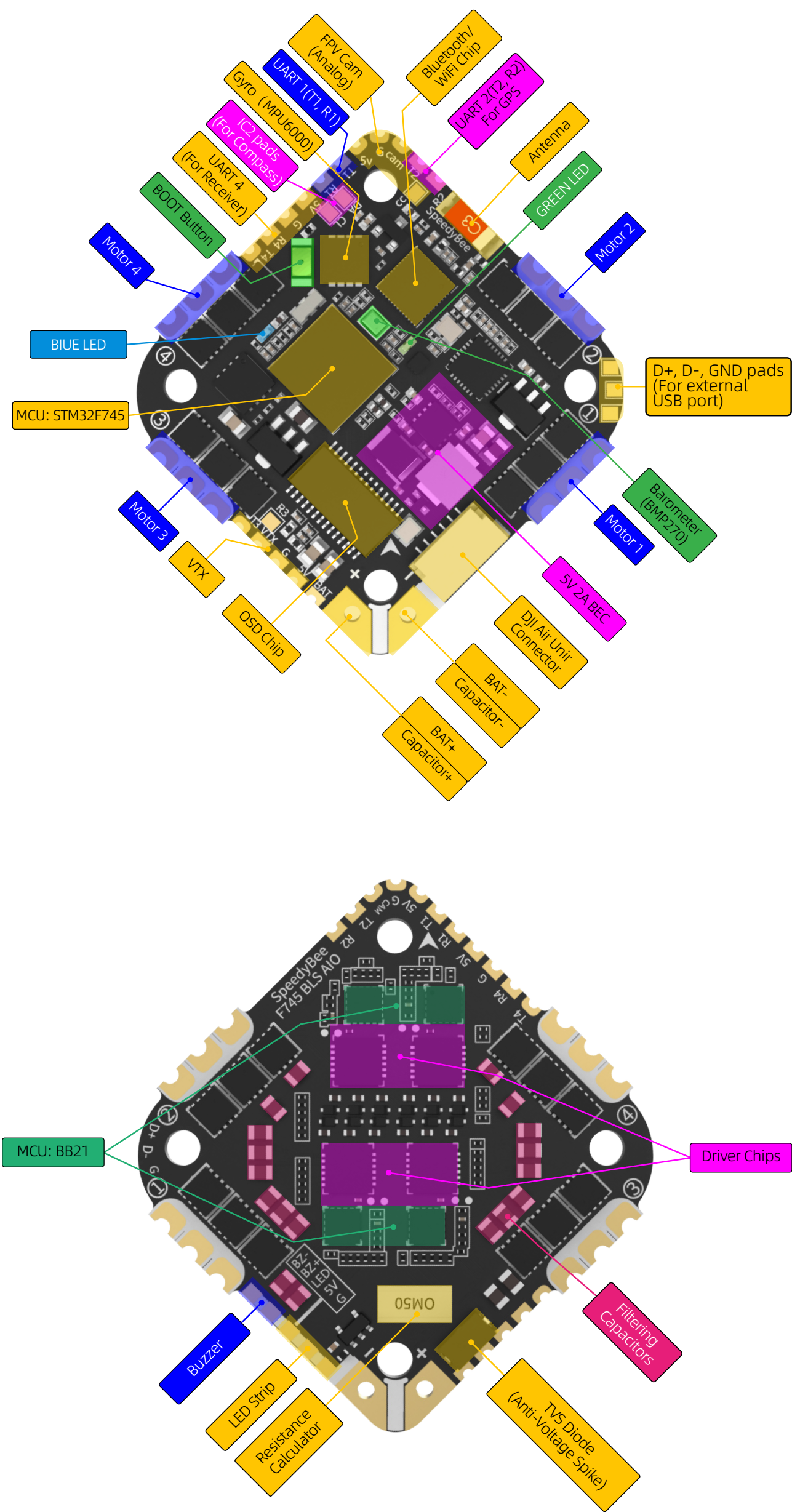
Overview	
Product Name	SpeedyBee F745 35A BLS AIO
Power Input	3S - 6S Lipo
Mounting	25.5 x 25.5mm, 3mm hole diameter
Dimension	36.5mm(L) x 36.5mm(W) x 7mm(H), recommended for quads at 3.5" or above
Weight	10.1g
FC	
MCU	STM32F745
IMU(Gyro)	MPU6000
USB Connection	Need to solder a USB TYPE-C module to D+,D-,GND pads.
Barometer	BMP280
OSD	Supported
BLE Bluetooth	Supported. Used for parameter configuration
Flash FC Firmware Wirelessly	Supported
Download/Analyze Blackbox	Supported
DJI Air Unit 6-pin Connector	Built-in.
Flash(for BlackBox)	8MB
Current Sensor	Supported. Scale=256
BetaFlight Camera Control Pad	Yes(CC pad)
5V Output	4 groups of 5V output. The total current load is 2.5A.
9V Output	None
ESC Signal Pads	M1 - M4
UART	Full UART * 4(UART1, UART2, UART3,UART4)
ESC Telemetry UART	None
I2C	Supported.
LED Pad	Used for WS2812 LED
Buzzer	BZ+ and BZ- pad used for 5V Buzzer
BOOT Button	Used to enter DFU mode
RSSI Input	Not supported
SmartPort	Use any TX pad of UART for the SmartPort feature.
Supported Flight Controller	BetaFlight(Default)
Firmware Firmware Target Name	SPEEDYBEE F745AIO
ESC	
Power Input	3-6S LiPo
Continuous Current	35A * 4
Burst Current	45A(5S)
ESC Protocol	DSHOT300/600
Power Output	VBAT
Current Sensor	Supported(Sacle=256)
Firmware	BLHeli_S JH40



Package



- SpeedyBee F745 35A BLS AIO x 1
- 35V 470uF Capacitor x 1
- XT30 Power Cable(Length: 7cm) x 1
- 6pin DJI Air Unit cable x 1
- External USB Port module(Wire Length: 5mm) x 1
- M2(Diameter) * 12mm(Length) Screw x 5
- M2(Hole Diameter) * 6.6mm(Height) Anti-vibration Silicone Grommets x 5
- M2 Silicone O-Ring x 5
- M2 Nylon Hex Nut x 5
- Manual & App Download Card x 1



■ LED Indicator Definition

- GREEN LED - Solid Green indicates Bluetooth is connected.
- BLUE LED - Flight controller status light which is controlled by the flight controller firmware.

■ BOOT Button

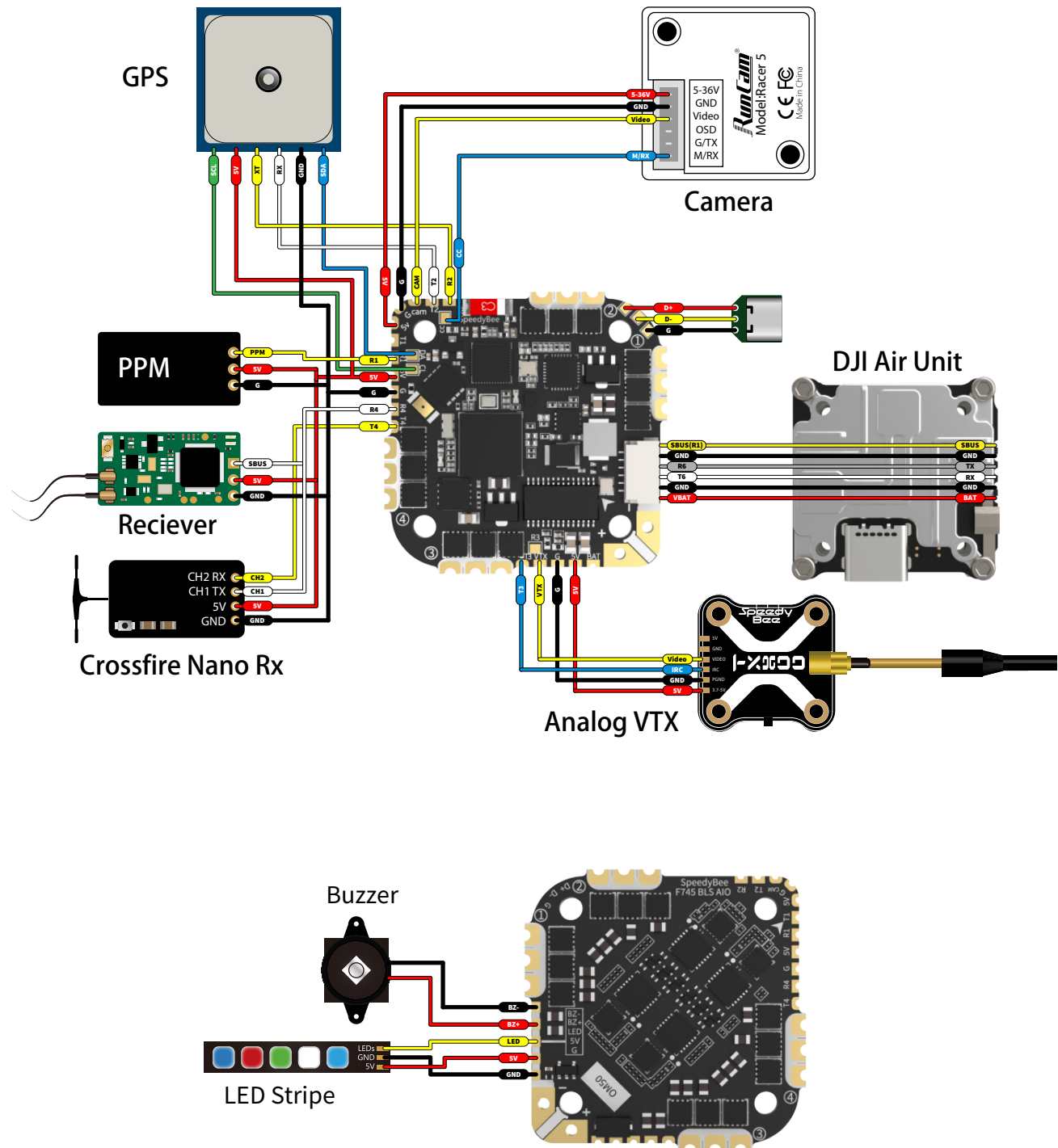
Only if the flight controller gets bricked , please follow these steps to re-flash firmware for it:

1. Hold the BOOT button (the only button on the FC), and power to FC at the same time, then the FC will enter DFU mode.
2. Open the SpeedyBee app, go to the FC Firmware Flashing page, and perform the Firmware Flashing as prompted.

Part 2 - Flight Controller

Wiring Diagram

5/11



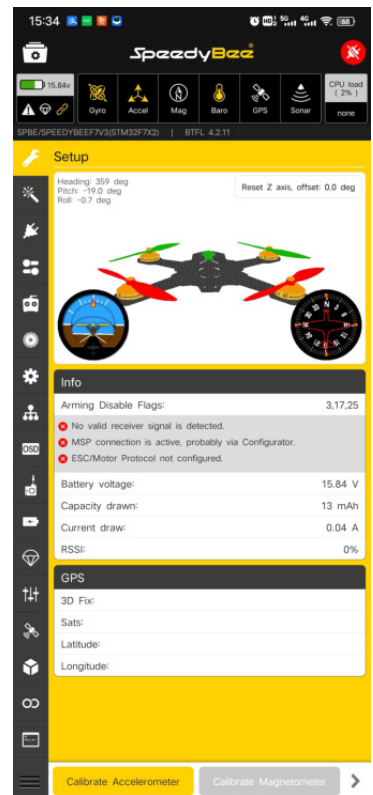
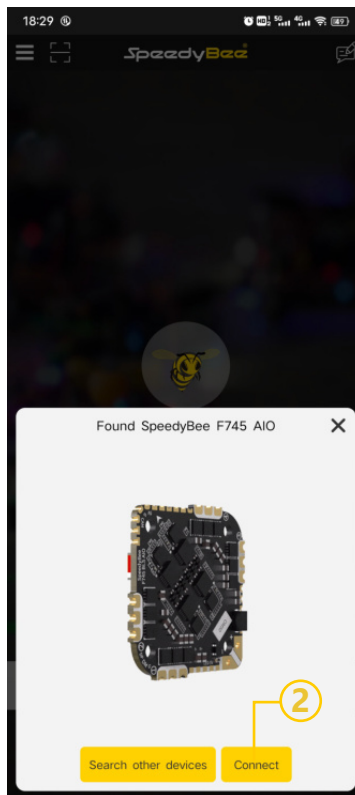
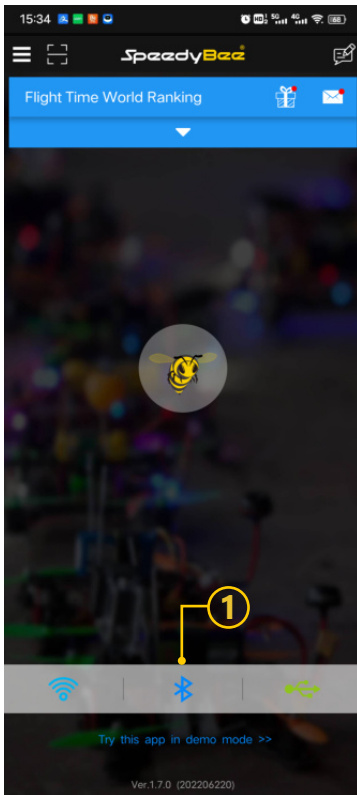
USB-C Module*

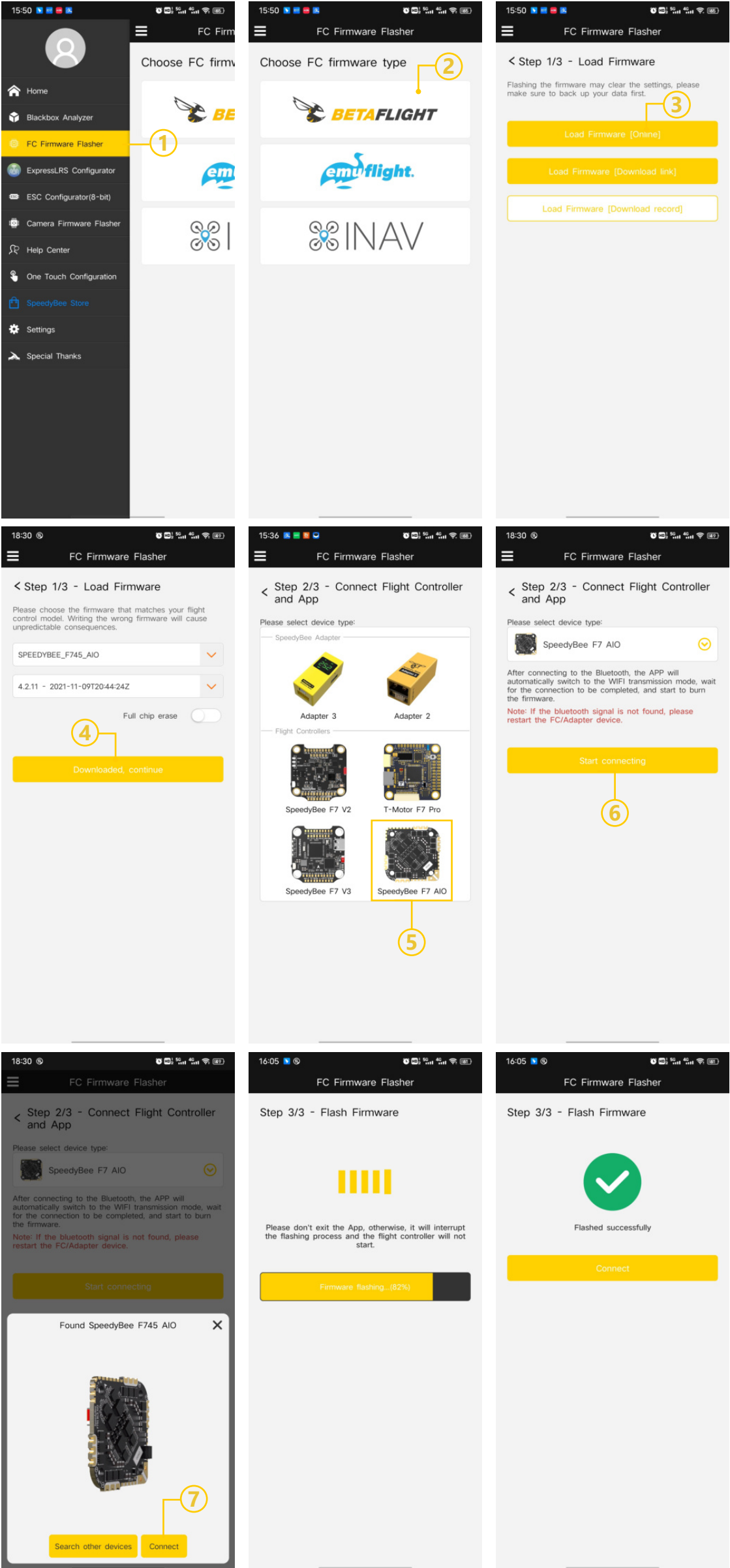
* Due to the size limitation, there's no 5V output from the FC to the USB-C module, so you need to power the AIO with a battery before you connect the AIO flight controller to your computer with a USB-C cable.

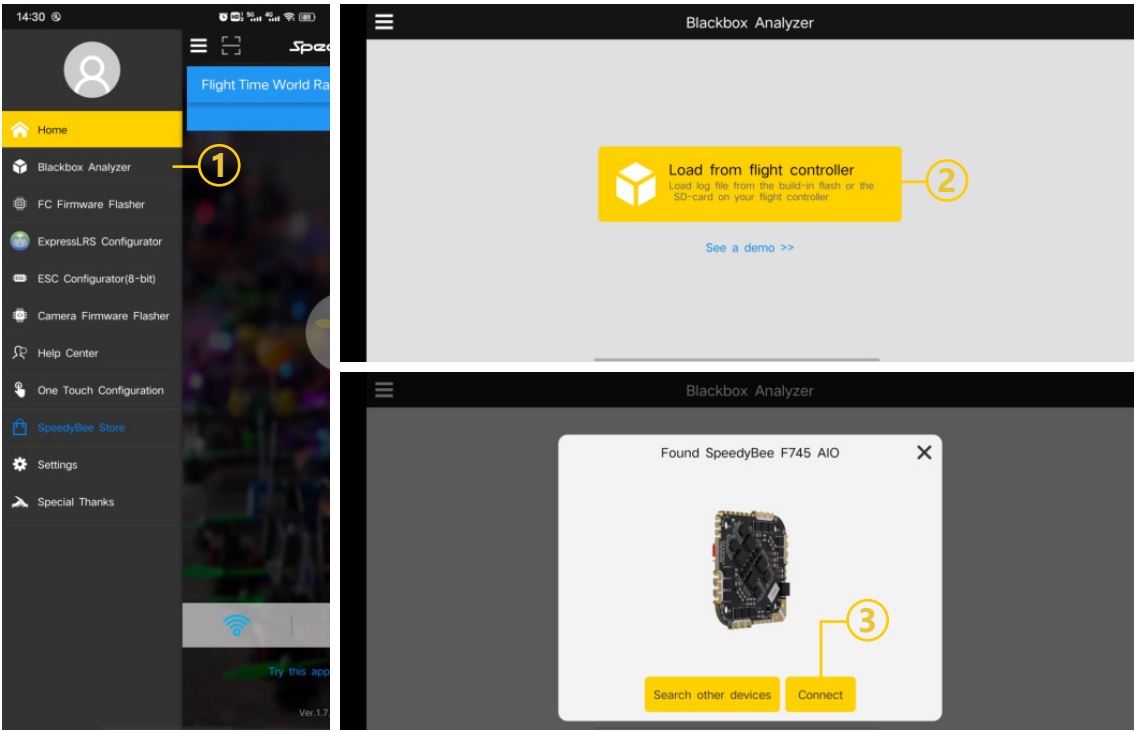
■ Get the SpeedyBee App

Search 'SpeedyBee' on Google Play or App Store. Or download the Android .apk file on our website: <https://www.speedybee.com/download>.

Connect the App

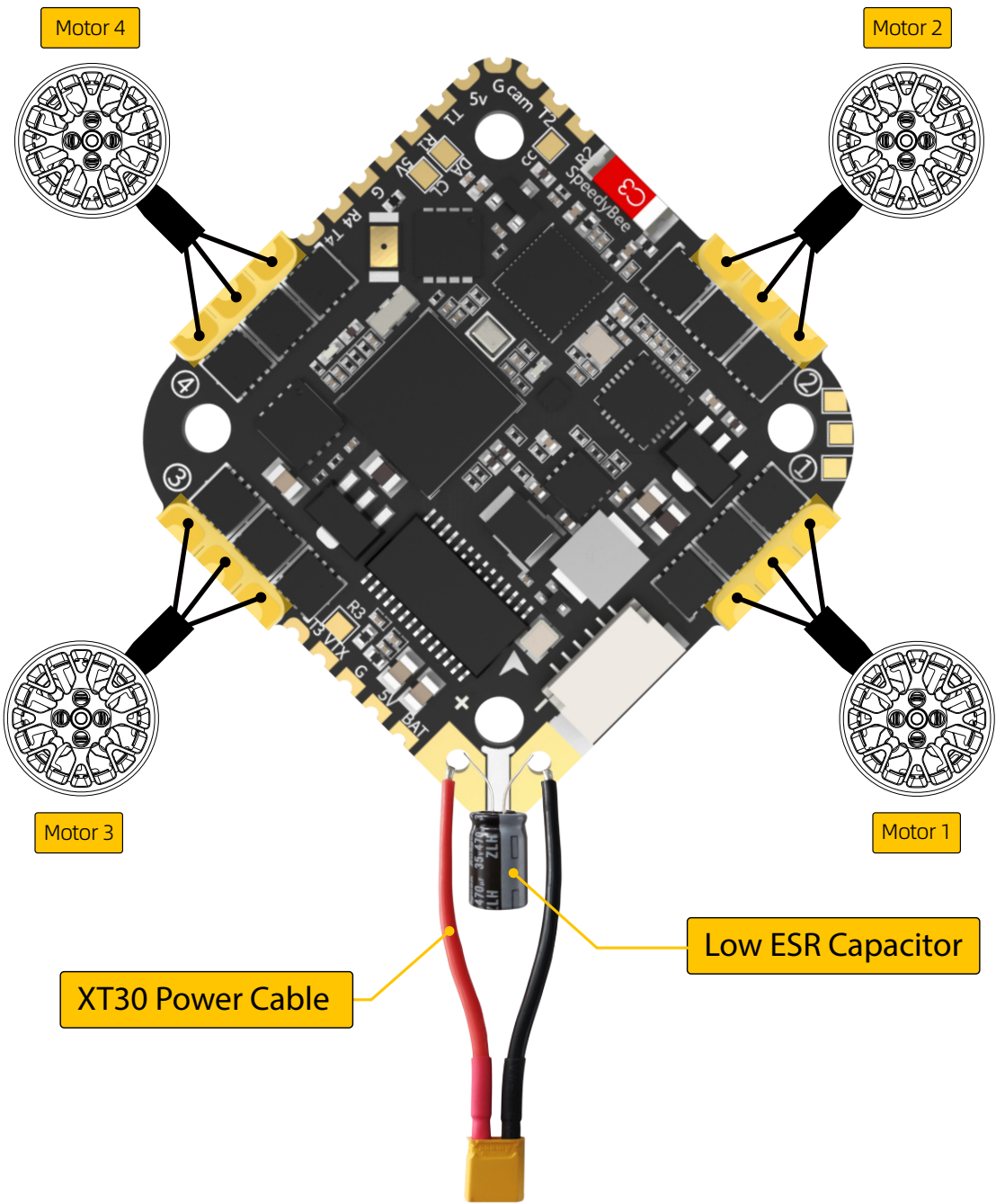




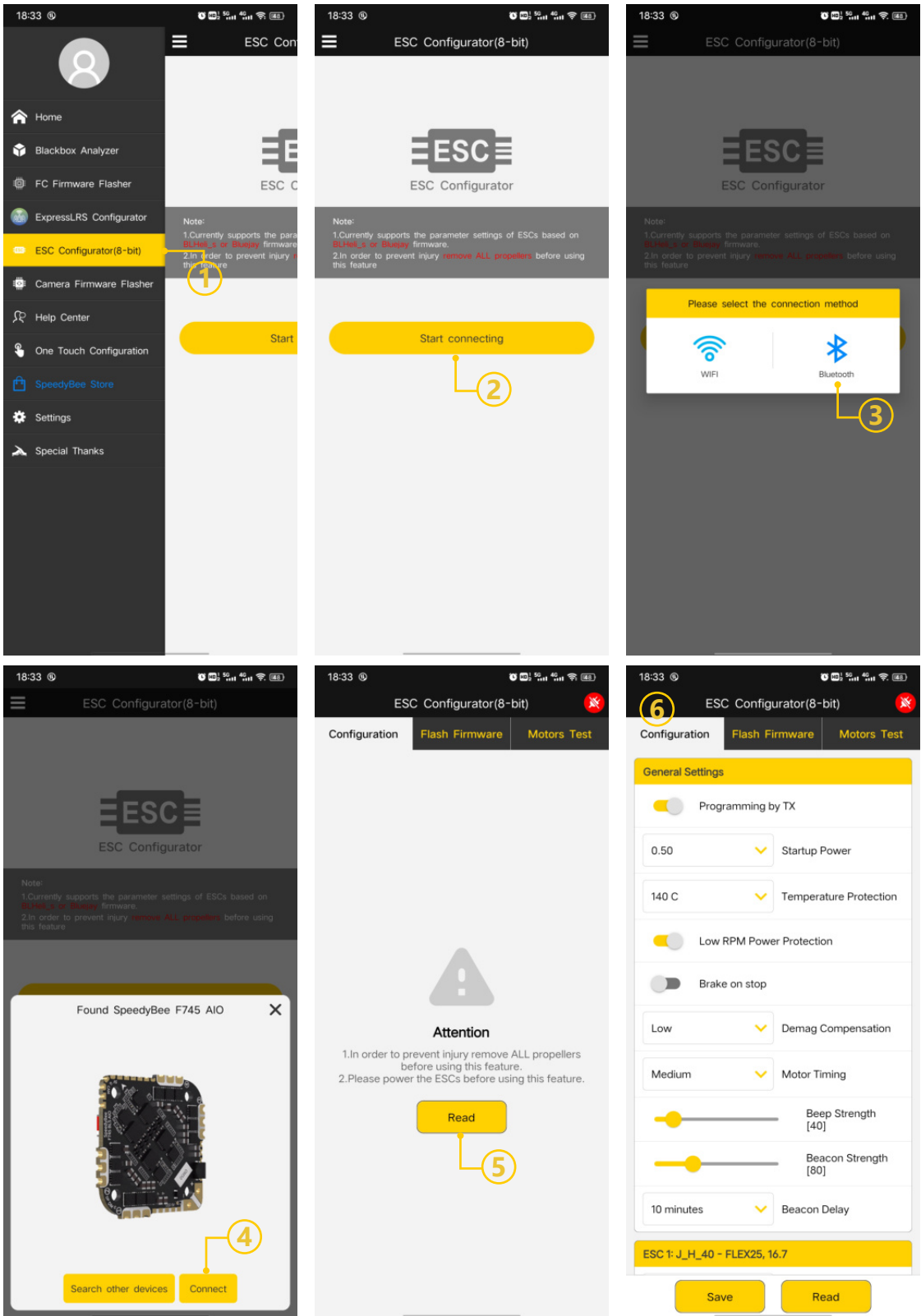


Part 3 - ESC

Connection with Motors & Power Cable



■ **Note:** In order to prevent the AIO from being burnt out instantaneous voltage spikes on powering up, it is strongly recommended to use the Low ESR capacitor in the package.



- You could flash both **BLHeli_S** and **Blue Jay** firmware for this ESC.

You need to plug in the battery to the AIO and then connect a USB cable between the AIO and your PC. Then flash ESC firmware (BLHeli_S or Blue Jay) in the following online configurator:

<https://esc-configurator.com/>

Note: ESC Type should be set as 'J-H-40'.

