

# GROWONIX

TUNED FOR GROWING



## QUICK START GUIDE FOR EX SERIES 600 / 1000

7

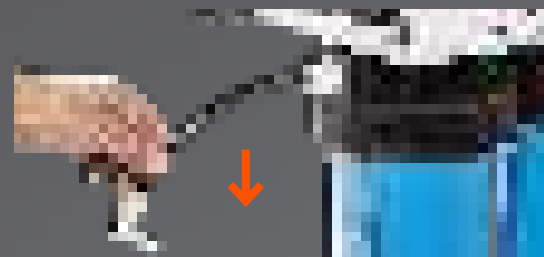
### FLUSHING THE CARBON FILTER

It is essential to always flush pre-filters (sediment & carbon) thoroughly before connecting to the membrane element.

KDF carbon filters especially need to be flushed upon initial use—and every time the RO system is moved.

Carbon fines can cause premature failure of the membrane element. The only way to avoid this is through flushing the carbon filter.

The tubing which connects the carbon filter output to the membrane input is disconnected upon shipping of the system.



Point this tubing down into a bucket or drain, and slowly turn on the incoming water supply. Carbon dust will start pouring out. Flush KDF carbon filters for at least 10 gallons.

8

After the carbon is flushed, turn off incoming water supply, and connect the tubing to the membrane input, making sure tubing is properly seated.



7

### CONGRATULATIONS

You have connected your Growonix product.  
Please follow the instructions below to get started

A) Make sure the flush valve is open STEP (3).

B) Turn on incoming water pressure slowly, allowing all the air to purge from the system. When air bubbles cease to be seen in either the RO (white) or drain (black) tubing, the air is purged.

C) Allow membrane to flush for at least 30 minutes prior to use.

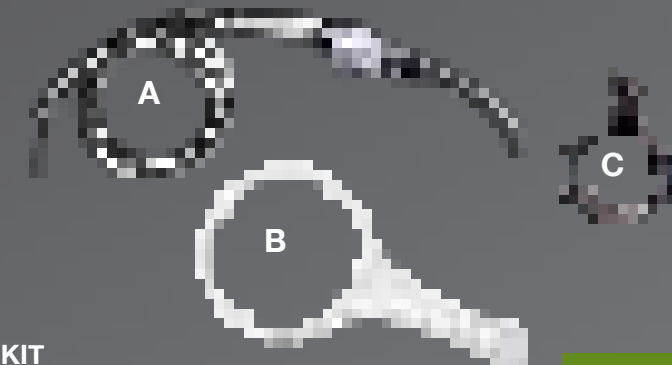
D) After membrane is flushed, close the flush valve to allow for normal water production.

E) Enjoy!

1

### CHECK CONTENTS

- A. Flush kit
- B. Filter wrench
- C. Drain clamp
- D. Instruction Manual



2

### CONNECT THE FLUSH KIT

Connect the flush kit to the membrane output fittings. Insert the white tubing into the white fitting—this is the RO/permeate line. Insert the black tubing into the black fitting—this is the drain line. Make sure the tubing is completely seated.

3

MAKE SURE  
FLUSH VALVE  
IS OPEN



4

A 3/8" drain clamp is included with the system. Connect the black tubing to the appropriate drain. Make sure tubing length does not exceed 20', otherwise added back pressure will decrease the system ratio. If longer length is needed, the tubing should be upsized.

5

Connect the white tubing to a storage tank. Make sure tubing length does not exceed 20', otherwise added back pressure will increase the system ratio. If longer length is needed, the tubing should be upsized.

6

### CONNECT THE INLET WATER SUPPLY

The brass hose fittings can be removed to allow for 3/4" NPT (or larger) pipe connections. This is a preferred method.

3/4" and 1" CTS tubing can be used as well. This is also a preferred method.

This example shows 3/4" garden hose connected to supplied hose union.

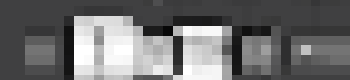
If using a garden hose make sure the inner diameter of the hose is between 3/4" and 1", and the total length of the hose does not exceed 20'. Otherwise too much pressure drop will occur and the system will not perform correctly.

### INFORMATION ON QUICK CONNECT FITTINGS

GROWONIX WATER FILTERS USE QUICK CONNECT FITTINGS THAT ALLOW FOR EASY MAINTENANCE.

**MAKE A CLEAN TUBE CUT**  
Cut the tube squarely and if using plastic tubing, ensure that the cut has not made the tube out of round. Also ensure that the tube has a smooth outside diameter without any burrs or score marks prior to inserting it into the fitting.

O-RING COLLET TUBING



### INSERT TUBE INTO FITTING

Push the tubing through the collet and dual o-rings until it bottoms out against the tube stop. The collet holds the tube in place and the dual o-rings provide a leak resistant seal.



### TEST AND INSPECT

Push and pull the tubing toward and away from the fitting to ensure that it has been installed properly. Test and inspect the installation for any leaks.



### TUBE REMOVAL

Relieve pressure from the tubing and fitting. Push uniformly around the collet flange against the fitting body while pulling the tubing away from the fitting to release it.



REAR VIEW OF EX1000-T

