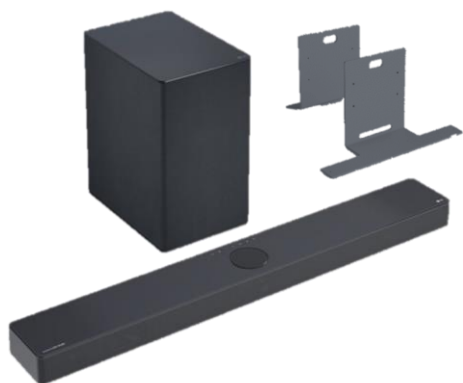


400W 3.1.3ch Sound Bar for OLED evo C Series TV with IMAX® Enhanced and Dolby Atmos®



Mode 1:  
Table Top



Mode 2:  
Wall Mounted to C OLED

## Synergy Bracket Designed for LG OLED C Series TV<sup>^</sup>

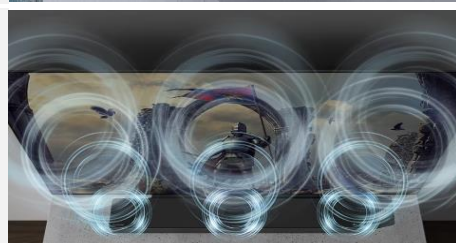
Delivered in a sleek design, the LG Synergy Bracket can be used as a table-top TV stand or to mount the sound bar to a wall-mounted LG OLED C2 or C3 TV.<sup>^</sup> The Sound Bar is positioned neatly under the TV for a clean, seamless look that complements any space. Easy to install, the bracket attaches directly to the TV.

<sup>^</sup>*Synergy Bracket included with SC9S sound bar. Compatible with C2 & C3 (55", 65", 77") TVs. Sound bar and TV sold separately.*



## Triple Up-Firing Speakers

The Sound Bar features Triple Up-firing Channels which help deliver a nuanced experience with superb voice clarity and a wide soundstage. Enjoy an incredibly immersive sound experience at home.



## Sound Tailored to your Space

Using an internal microphone and spatial awareness technology, AI Room Calibration Pro analyses your room to help tailor sound across frequencies, balancing settings with your environment for natural and realistic sound\*.

*\*Requires LG Sound Bar and Google Home app, and home Wi-Fi network.*



## WOW Orchestra

WOW Orchestra uses both the LG Sound Bar and compatible LG TV speakers\* at the same time to create an expanded soundstage with a whole new level of depth and power. Experience a more immersive sound that you can feel all around you.

*\*Compatible TVs: Z3, G3, C3, B3, OLED Z2/G2/C2/CS, QNED 99/95, LX1, ART90.*



## The Sound of Cinema at Home

LG Sound Bar technology combined with Dolby Atmos®, DTS:X®, and IMAX® Enhanced\* helps to bring the ultimate sound experience to your living room. Discover clear sound, and the sensation of being in the centre of every scene.

*\*Dolby Atmos®, IMAX® Enhanced and DTS:X® enabled TV / Player and compatible source content required.*



DESIGN	
Colour	Dark Steel Silver
RECOMMENDED TV	
Size & Matching TV	C2 & C3 OLED (55", 65", 77")
AMPLIFIER / SPEAKERS	
Total Output Power	400W
Sound System	3.1.3ch
Output Power – Front	30W x 2
Output Power – Centre	30W x 1
Output Power – Surround	-
Output Power - Centre Height	30W x 1
Output Power – Height	30W x 2
Output Power – Rear	-
Output Power - Rear Height	-
Output Power – Subwoofer	220W (Active)
Amplifier Type	Class-D
SUPPORTED DECODING FORMATS	
Surround Sound Decoding	Dolby Atmos, Dolby TrueHD, Dolby Digital Plus, Dolby Digital, DTS:X, DTS-HD Master Audio, DTS-HD High Resolution Audio, DTS Digital Surround, LPCM, AAC/AAC+, MQA
Music Decoding	FLAC, OGG, WAV, MP3, WMA, AAC
AUDIO CAPABILITIES	
Audio DAC	● High Res (96kHz/24-bit)
Music Upscaling	● Up to 96kHz/24-bit)
User EQ	● High Res (96kHz/24-bit)
With Meridian	-
SOUND MODES	
Sound Types <sup>1</sup>	11 (Dolby Atmos, DTS:X, IMAX Enhanced, Movie (Dolby Surround), AI Sound Pro, Standard, Music, Bass Blast, ClearVoice, Sports, Game)
AI FEATURES	
Works with Hey Google <sup>2</sup>	●
Google Multi-Room Group Playback <sup>2</sup>	●
Works with Amazon Alexa <sup>2</sup>	●
Works with Apple AirPlay <sup>3</sup>	●
Chromecast Audio Built-In	● (Music)
Compatible Streaming Services	Spotify, Apple Music, YouTube Music, Tidal Connect
CONNECTIONS	
HDMI Input / Output (HDCP 2.3) <sup>4</sup>	1 / 1
Digital Audio (Optical) Input	● (1)
USB 2.0 Input	● (1)

FURTHER INFORMATION

1 Requires ARC/eARC compatible TV. Dolby Atmos® and DTS:X® source content required for full effect. LG Z3, G3, C3, B3, QNED85 and QNED81 TVs are compatible with DTS:X pass-through. LG 2020, 2021 & 2022 TVs are not compatible with DTS:X pass-through.

2 Setup requires LG Sound Bar app (Android 5.0 or later, iOS10.0 or later) and home Wi-Fi network. Hey Google™ and Amazon Alexa™ functionality require an internet connection as well as a Google or Amazon Account (as applicable). Controlling devices and features requires compatible smart devices. Subscriptions may be required to access certain content. Some features and services may be changed without notice. Depending on language, voice clarity and available content or source material, voice commands may not always deliver or respond to the requested command. Google is a trademark of Google LLC. Amazon, Alexa and all related logos and motions are trademarks of Amazon.com, Inc. or its affiliates.

3 Apple AirPlay® requires a Wi-Fi network, and is compatible with iOS11.4 or later, or macOS10.14.5 or later. Controlling devices and features requires compatible smart devices. Subscriptions may be required to access certain content. Some features and services may be changed without notice. AirPlay is a trademark of Apple Inc.

4 HDMI Ports support HDCP 2.3 up to 2160p@ 60fps (4:4:4 Dolby Vision, HDR10)

5 Compatible 2022 and 2023 LG TV required.

6 Requires LG Sound Bar app (Android 5.0 or later, iOS10.0 or later) and home Wi-Fi network.

7 Compatible 2022 and 2023 LG TV required

8 Volume and Mute controls can be controlled from other brand TV remotes. See product Operating Manual for more details.

9 Designed for use with LG TVs only

10 Sound Bar, console and compatible TV to be connected via HDMI. VRR and ALLM support required for console and TV. HDMI pass-through supports 3840 x 2160 up to 120hz (32Gb/s, 4:2:0).

11 Compatible with LG C2 & C3 OLED TVs (55", 65", 77")

Disclaimer: All product specifications are correct at time of printing. Specifications may change without prior notice. Customers are advised to check with your retailer before purchase.

CONVENIENCE FEATURES	
WOW Orchestra <sup>5</sup>	●
WOW Interface <sup>5</sup>	●
AI Room Calibration <sup>6</sup>	●
Bluetooth® Music Streaming	●
Wi-Fi Built-In <sup>6</sup>	●
Smartphone Remote App <sup>6</sup>	Google Home, LG Sound Bar
TV Sound Mode Share <sup>7</sup>	●
Sound Bar Mode Control <sup>7</sup>	●
Sound Sync Wireless	● (LG TV Bluetooth)
Sound Sync (LG TV Optical)	● (Power, Volume, Mute)
Multi-Brand TV Remote Compatible <sup>8</sup>	● (Volume, Mute)
Matching LG Rear Speaker Kit	SPQ8-S (Sold separately)
SIMPLINK (With LG TVs) <sup>9</sup>	●
Audio Return Channel (eARC/ARC) <sup>9</sup>	eARC
A/V Sync (0-300ms)	●
LED Display	● (Dot LED)
Auto Dimmer	-
Auto Volume Leveler	●
Night Mode	●
Dynamic Range Control	●
USB External HDD Playback	● (USB thumb drives)
VRR / ALLM / 120Hz Pass-through <sup>10</sup>	●
Synergy Bracket <sup>11</sup>	●
SUPPLIED ACCESSORIES	
HDMI Cable	●
Synergy Bracket	●
AC Adaptor	●
Remote Control	●
Simple User Guide	●
Warranty Card	●
DIMENSIONS	
Main Unit (WxHxD)	975mm x 63mm x 125mm
Rear Speakers (WxHxD)	-
Wireless Box (WxHxD)	-
Subwoofer (WxHxD)	221mm x 390mm x 313mm
Carton (WxHxD)	1221mm x 477mm x 284mm
Net Weight (Main Unit)	4.1kg
Net Weight (Subwoofer)	7.8kg
Net Weight (Rear Speakers)	-
Net Weight (Wireless Box)	-
Gross Weight (Carton)	22.7kg
WARRANTY	
1 Year Warranty – Parts & Labour	
PREVIOUS MODEL	
-	
EAN	
8806091951953	