

Using DisplayLink with the laptop lid closed

For Mac:

<https://www.youtube.com/watch?v=jRIg1MK2sJM>

<https://www.youtube.com/watch?v=PIVUrww70G4>

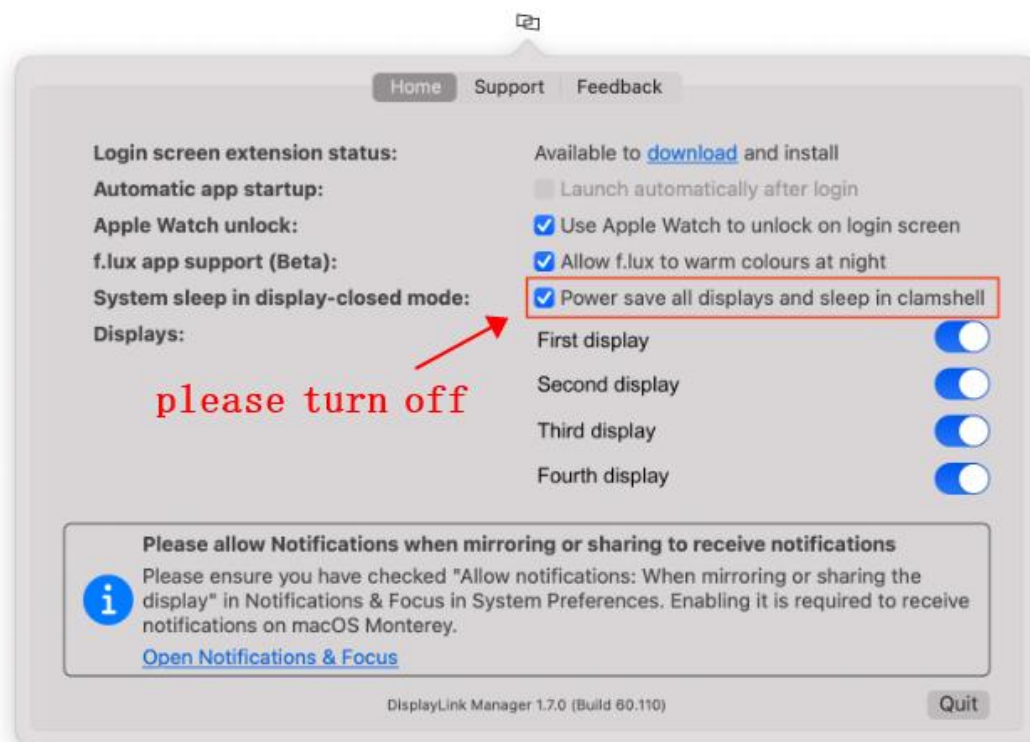
Note:

DisplayLink Manager 1.7 & later introduces a new option to put the system to sleep when closing the built-in display.

The "System sleep on display-closed mode" option is available through the app user interface and applies to MacBook machines only (not to Mac desktops).

Turn this option off if you need to work while sleeping. Thanks!

Check the option "System sleep on display-closed mode" in the Home tab.



For Windows :

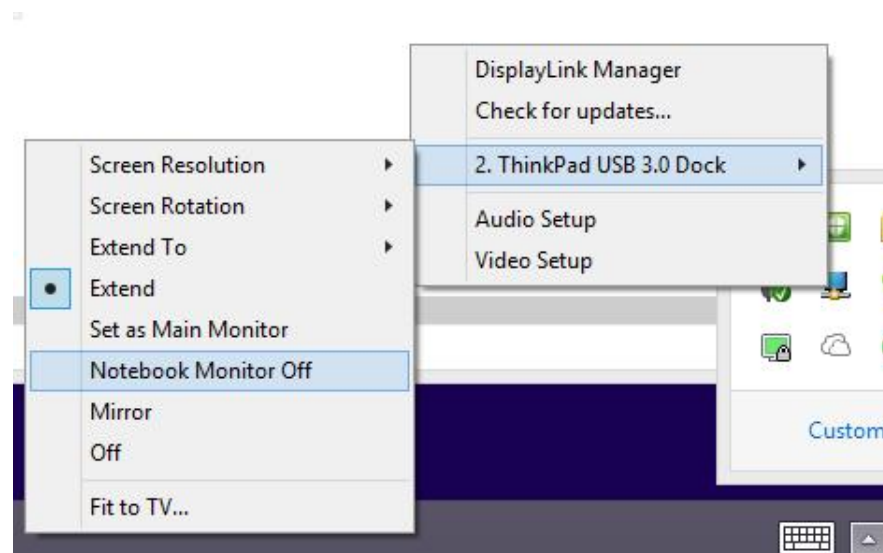
<https://support.displaylink.com/knowledgebase/articles/544345-using-displaylink-with-the-laptop-lid-closed>

It is possible to use the DisplayLink device with the laptop lid closed, however this needs to be configured.

Firstly, the notebook monitor needs to be set to off. This can be done in two ways:

Using the DisplayLink UI

The DisplayLink GUI in the system tray provides the option to set "Notebook monitor off". Choose this option to set the DisplayLink display to be the only active monitor:

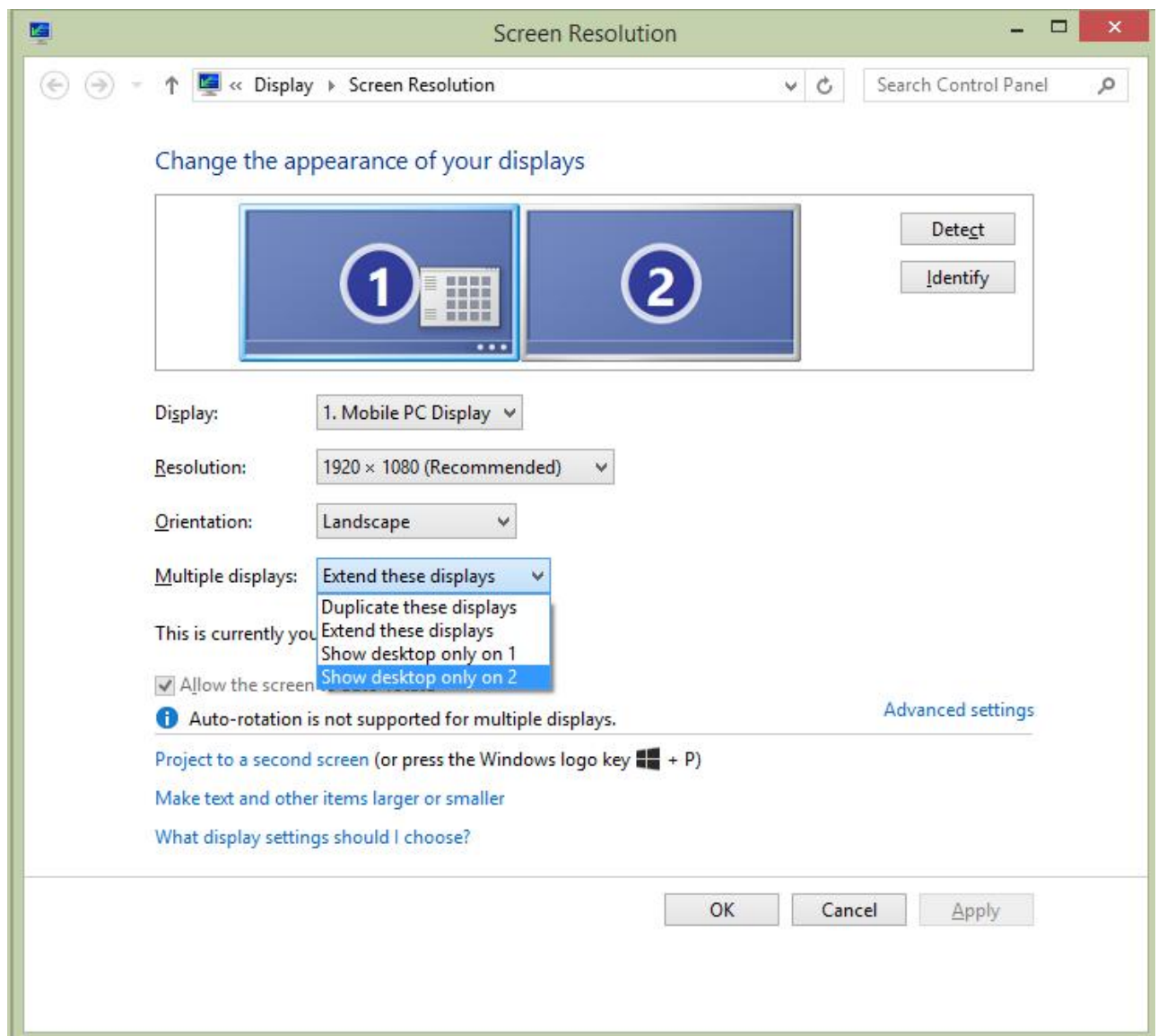


Using Windows Control Panel

Open the Windows Screen Resolution by right clicking on the desktop and choosing "Screen Resolution".

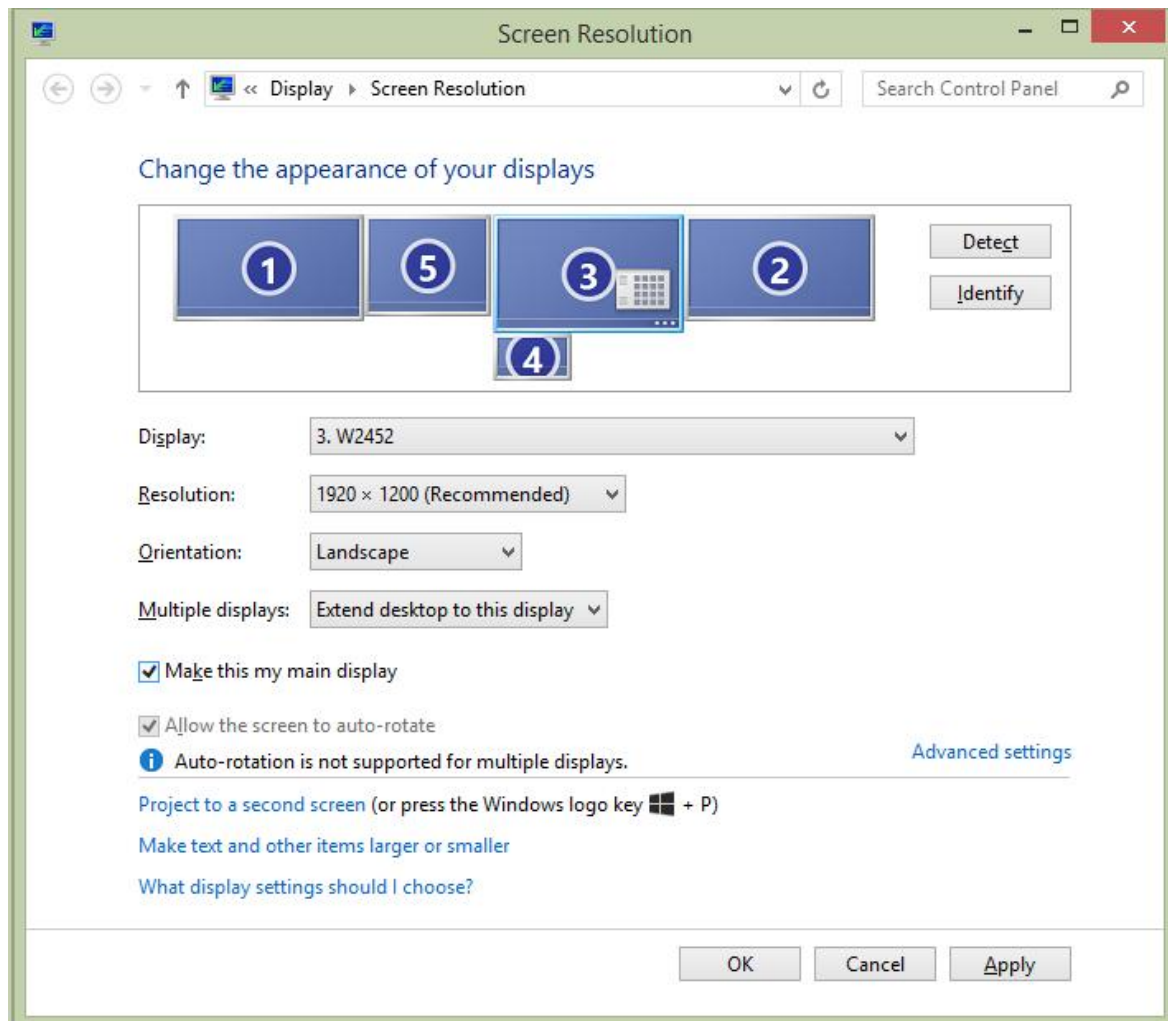
IF YOU ONLY HAVE TWO DISPLAYS:

Set the "Multiple Displays" menu option to "Show Desktop only on 2" (the DisplayLink monitor)

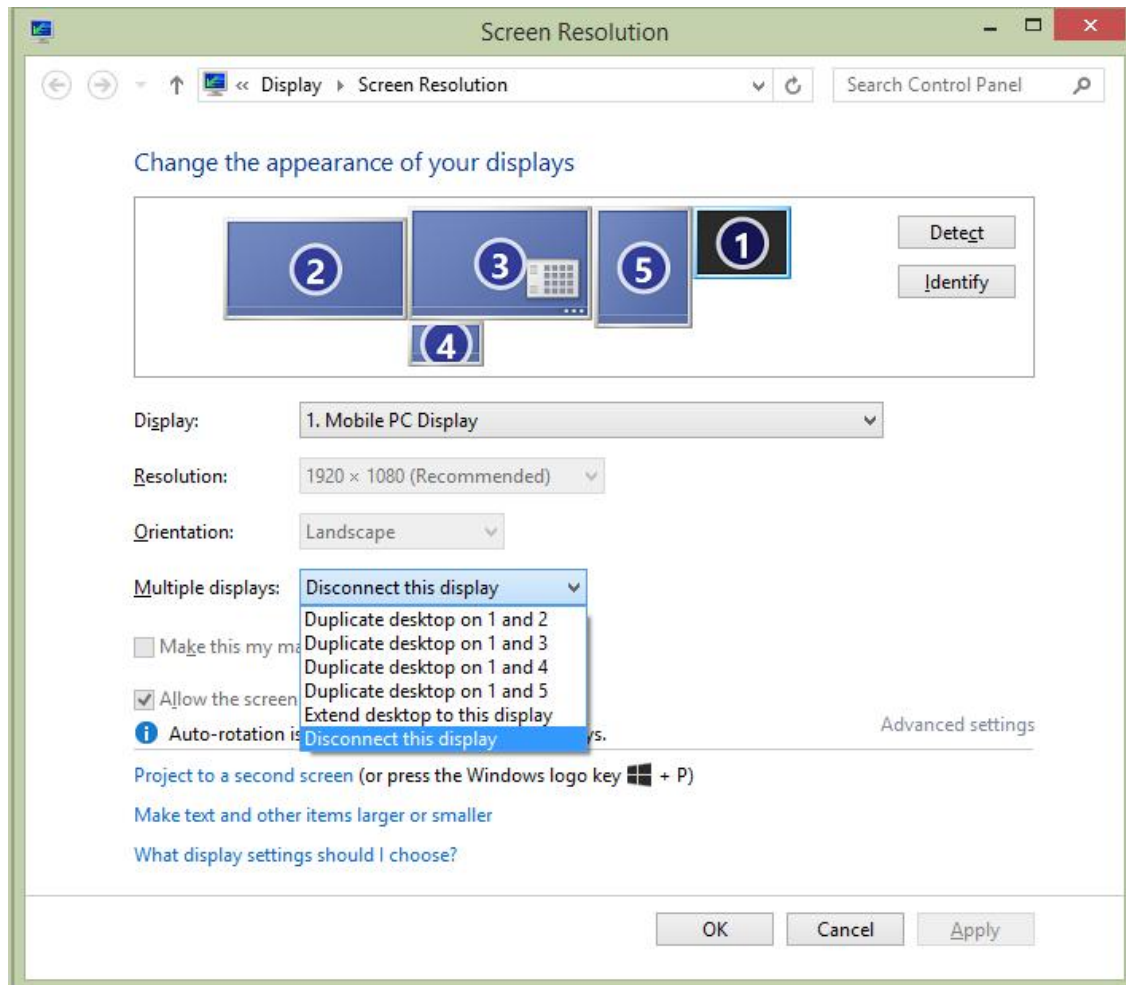


IF YOU HAVE MORE THAN TWO DISPLAYS:

- Choose the DisplayLink display you want to be the main monitor
- Check the box that states "Make this my main display"



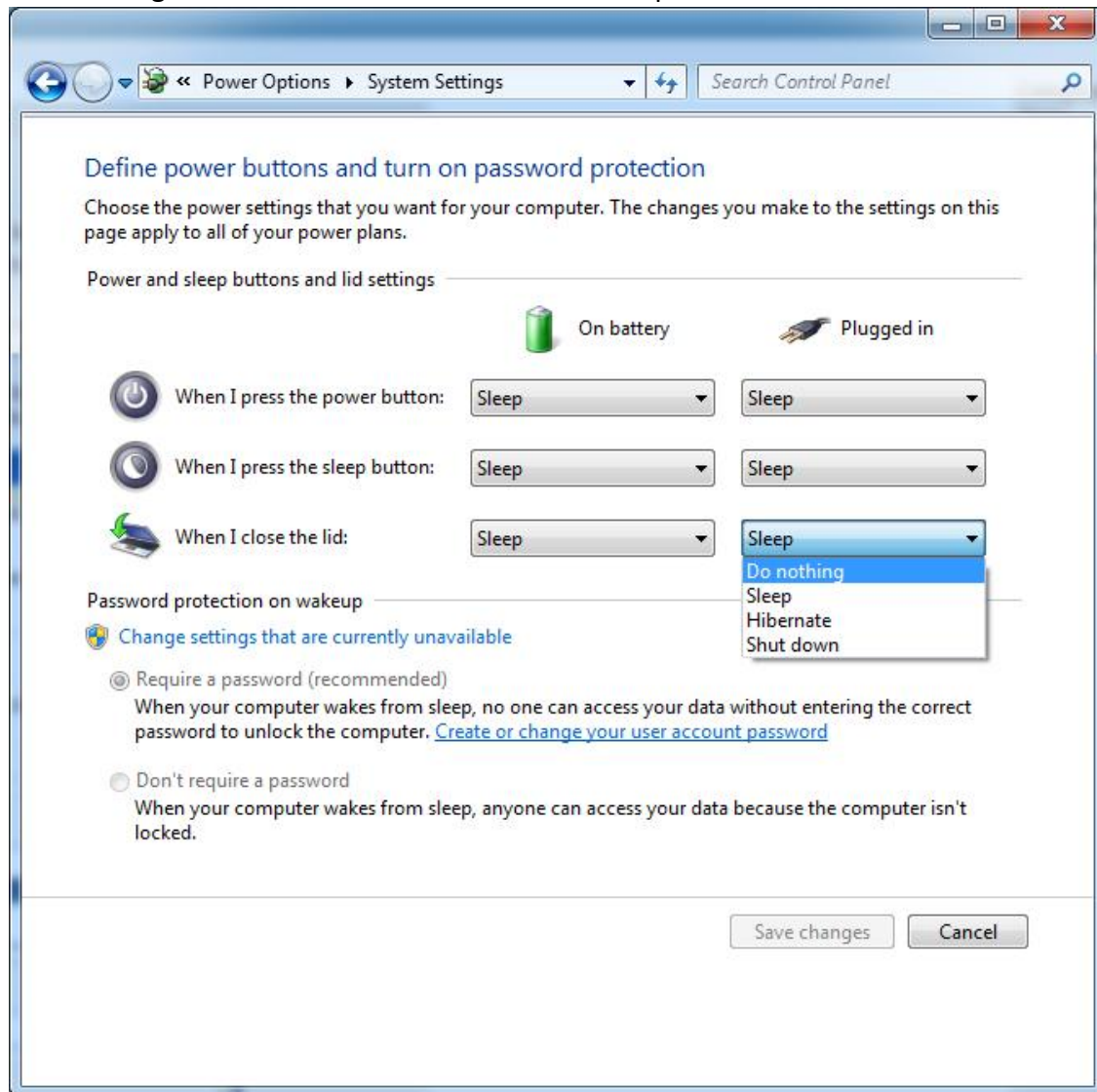
Now choose the notebook display, and disconnect the display:



Closing the lid

Before the lid can be closed, the Power settings for the lid close need to be set to

"Do Nothing". This can be done under the Power Options in Control Panel:



Thank you for choosing us Minisopuru!

If you encounter problems during use, please don't worry. Please contact our after-sales department. Thank you for your patience and understanding!

Email: support@minisopuru.com

Support: <https://minisopuru.com/pages/contact>