



SERVICE PARTS LIST

BULLETIN NO.
PN0005306

SPECIFY CATALOG NO. AND SERIAL NO. WHEN ORDERING PARTS		REVISED BULLETIN	DATE
M18™ Brushless Blower			July 2025
CATALOG NO.	3044-20	SERIAL NO.	R54A
		WIRING INSTRUCTION See Pages 3-4	

EXAMPLE:
Component Parts (Small #) Are Included
When Ordering The Assembly (Large #).

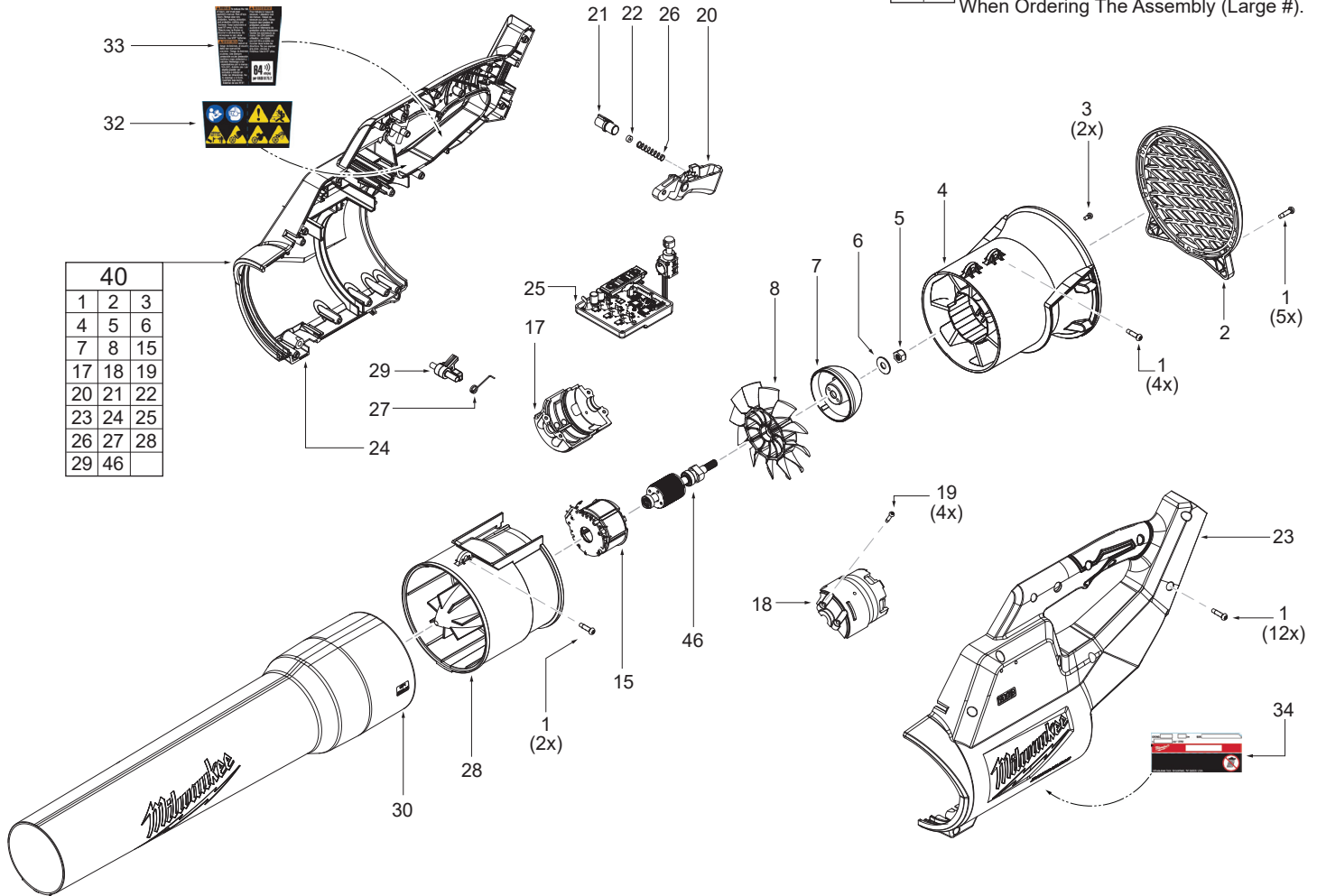
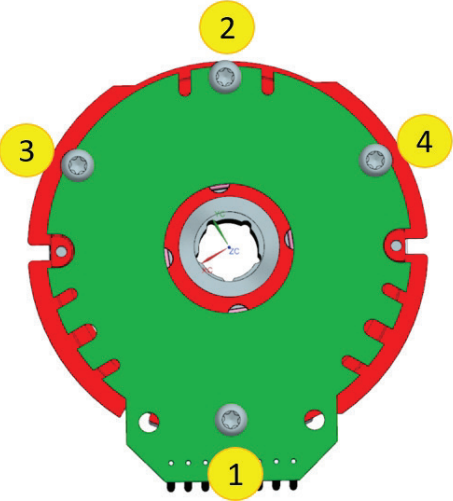
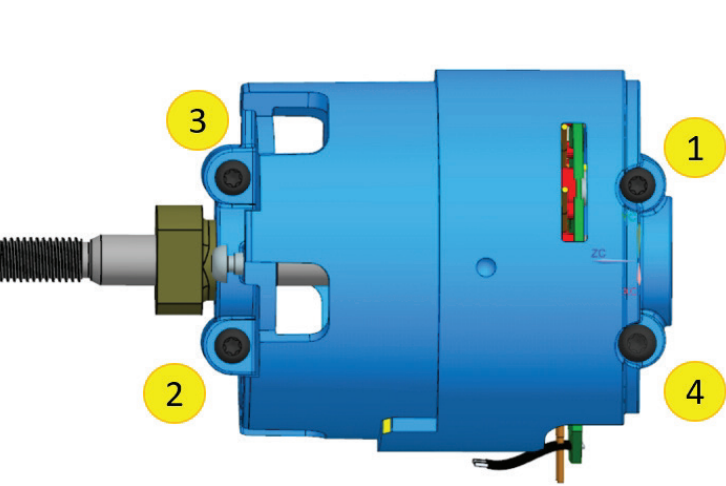
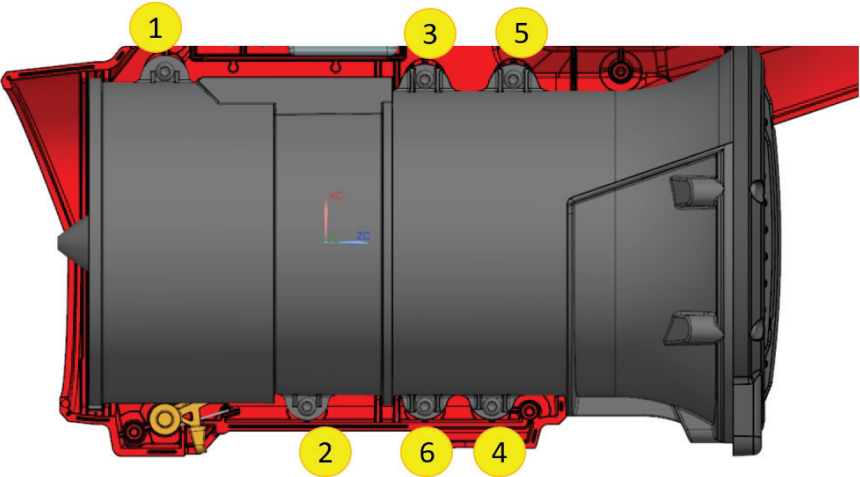
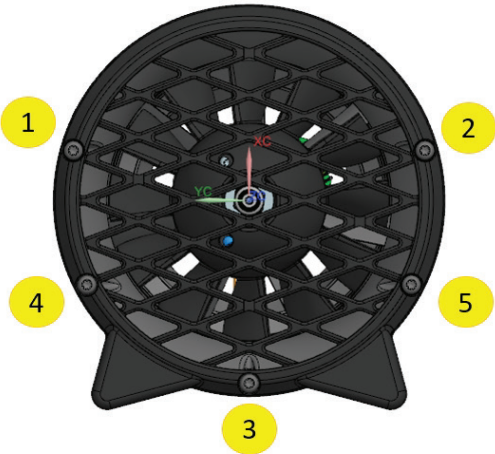
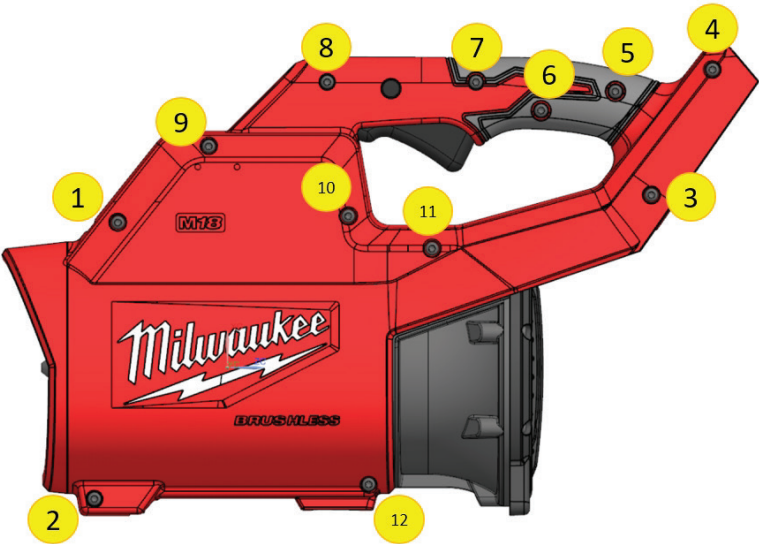


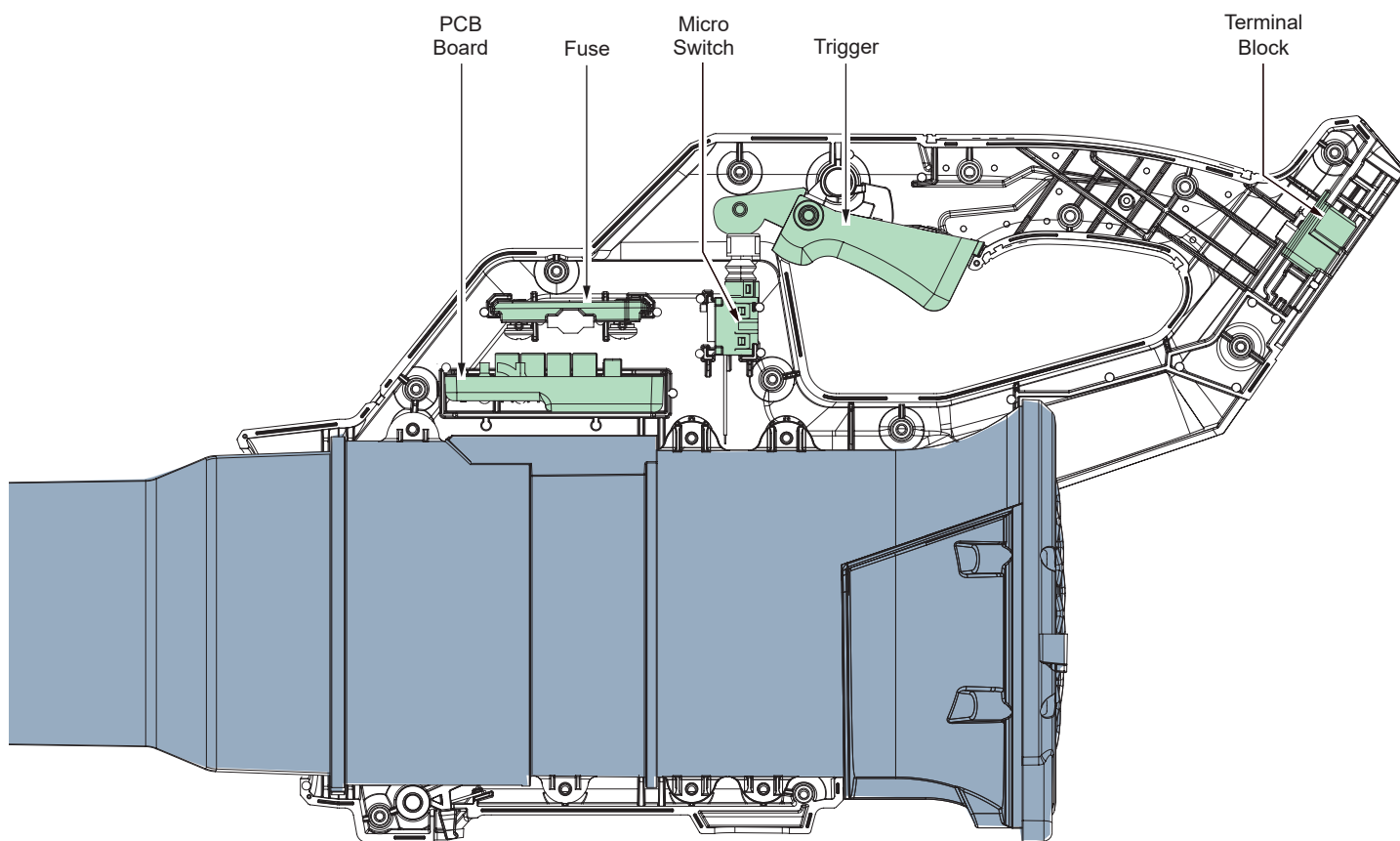
FIG.	PART NO.	DESCRIPTION OF PART	NO. REQ.	FIG.	PART NO.	DESCRIPTION OF PART	NO. REQ.
1	31-15-2581	M4 x 16mm Pan Hd. Torx T-20 B Screw	(23)	27	-----	Spring for Nozzle Lock	(1)
2	-----	Inlet Cover	(1)	28	-----	Cone Section	(1)
3	-----	M3.5 x 7mm Pan Hd. Torx T-10 Screw	(2)	29	-----	Nozzle Lock	(1)
4	-----	Bell Tube	(1)	30	31-01-5925	Injection Molded Nozzle (Blower Tube)	(1)
5	-----	M7 x 1 Lock Nut	(1)	32	10-22-1739	Warning Label	(1)
6	-----	Washer	(1)	33	10-22-1741	Warning Label	(1)
7	-----	Fan Dome	(1)	34	12-20-3352	Service Nameplate	(1)
8	-----	Fan	(1)	40	31-01-0425	Service Console without Nozzle Assembly	(1)
15	-----	Stator	(1)	46	-----	Rotor Assembly	(1)
17	-----	Right Motor Cage	(1)				
18	-----	Left Motor Cage	(1)				
19	-----	M3 x 14mm Torx T-10 Screw	(4)				
20	-----	Trigger	(1)				
21	-----	G2 Blower Lock-On	(1)				
22	-----	Sponge for Lock-On	(1)				
23	-----	Handle Cover	(1)				
24	-----	Handle Support	(1)				
25	-----	PCBA	(1)				
26	-----	Spring for Lock-On	(1)				

FIG. 32,33 34 **NOTES**
A clean, dry surface is essential for proper performance for any adhesive system. The area intended for application of any adhesive label or nameplate must be prepared by cleaning with isopropyl alcohol. The solvent is to be applied with a clean, lint free applicator and the surface allowed to dry before applying any label or nameplate.

SCREW SEQUENCE - FASTENING ORDER

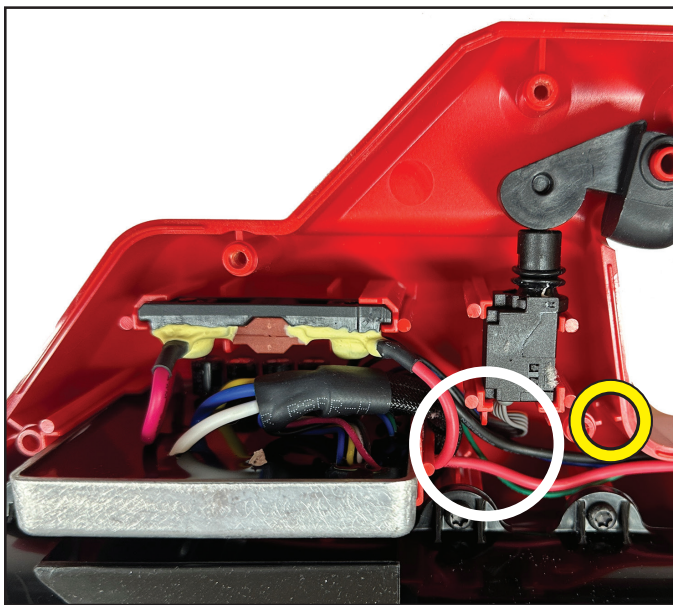


WIRING INSTRUCTIONS

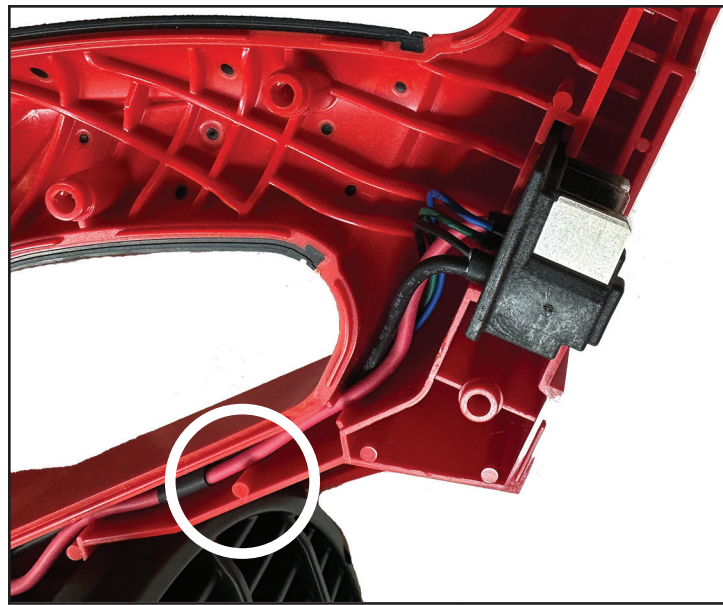


SCREW TORQUE SPECIFICATIONS

FIG.	PART NO.	DESCRIPTION OF FASTENER	WHERE USED	SEAT TORQUE	
				(kgf-cm)	(lb-in)
1	-----	M4 x 16mm Pan Hd. Torx T-20 B Screw	Inlet Grate	9 ± 1	8 ± 0.8
1	-----	M4 x 16mm Pan Hd. Torx T-20 B Screw	Handle Housing	11 ± 1	10 ± 0.8
1	-----	M4 x 16mm Pan Hd. Torx T-20 B Screw	Bell Tube to Handle Housing	11 ± 1	10 ± 0.8
1	-----	M4 x 16mm Pan Hd. Torx T-20 B Screw	Cone Section to Handle Housing	11 ± 1	10 ± 0.8
3	-----	M3.5 x 7mm Pan Hd. Torx T-10 Screw	Bell Tube to Motor Housing	4.5 ± 1.5	4 ± 1.3
5	-----	Nut	Fan	18.5 ± 1.5	16 ± 1.3
19	-----	M3 x 14mm Torx T-10 Screw	Left Motor Cage	8 ± 1	7 ± 0.8



- 1) Make sure all the wires are in the main groove.
- 2) Do not put wires through the rib spot in yellow circle.



- 3) Make sure the RED wire is on top of the other wires through the slim grooves. The BLACK wire (thick one) should be in the middle and the remaining wires should be below them.



- 4) When routing the wires from the Terminal Block to the PCB Board, please make sure the wires fit securely inside the traps and between the ribs without pinching the wires.

WARNING:

- Take notice of wire routing and position in wire guides and traps while dismantling tool.
- Be sure that all components of the electronics kit are seated firmly and squarely in housing recesses.
- Avoid pinched wires, be sure all wires and sleeves are pressed completely down in wire guides and traps.
- Prior to installing housing cover onto handle support, be sure that there are no interferences.
- Be sure to check for C functionality of switches and buttons after housing halves have been secured.