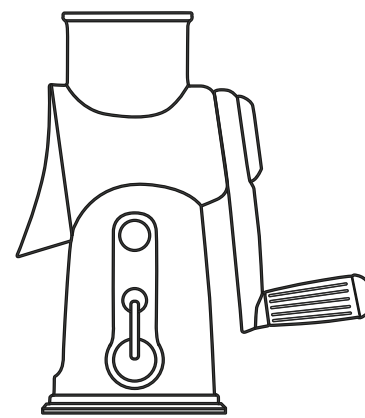


SUSTEAS

# INSTRUCTION MANUAL



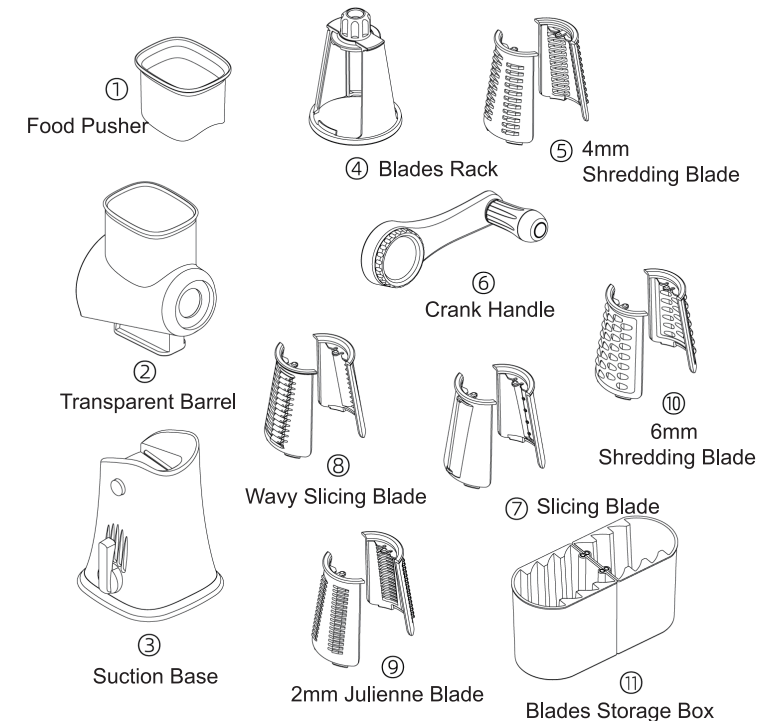
## VEGETABLE GRATER

Please read this manual carefully before using the product and keep it properly. This product is only used in family or similar places.

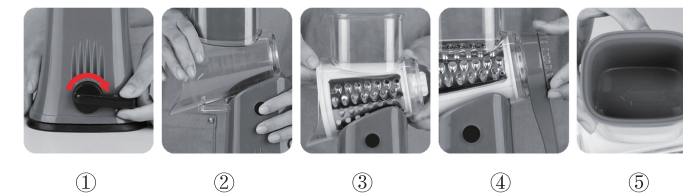
### KINDLY REMINDER

Note: Remove the product packaging and clean the product before the first use.

### PRODUCT PART AS SHOWN

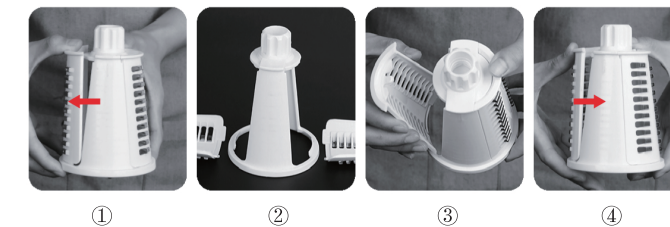


### INSTALLATION PROCEDURE



- ① Press the grater, turn the knob clockwise to lock the suction base.
- ② Press and hold the button on the left side of the base, install the transparent barrel.
- ③ Put the blade into the transparent barrel and push it to the bottom.
- ④ Turn the rotary knob on the crank handle clockwise to lock the blade.
- ⑤ Put in the food pusher, the installation completed.

### HOW TO CHANGE BLADES



- ① Hold the round blade rack by one hand, pull outwards to remove the blades by your other hand.
- ② Find the blades you need.
- ③ Clip the bottom of blade into the round blade rack.
- ④ Push the top side inwards.

### DETAILS MATERIALS

Component name	Material
Fuselage	PC+PP+ABS+TPR
Blade	SUS304



To prevent possible harm to the environment or human health from uncontrolled waste disposal, please separate these marked with crossed out items from other types of waste and recycle them responsibly to promote the sustainable reuse of material resources. In order to obtain information on where and how environmentally safe recycling of this product, household users should contact either the retailer where they purchased this product, or their local government office, for details of where and how they can take this item for environmentally safe recycling.

If you need assistance with the product, please contact us immediately and we will resolve your issues to your satisfaction.  
Sales company : SUSTEAS  
E-mail : shipengmaoyi@outlook.com