



TRANSPARENT WIRELESS GAMING MOUSE

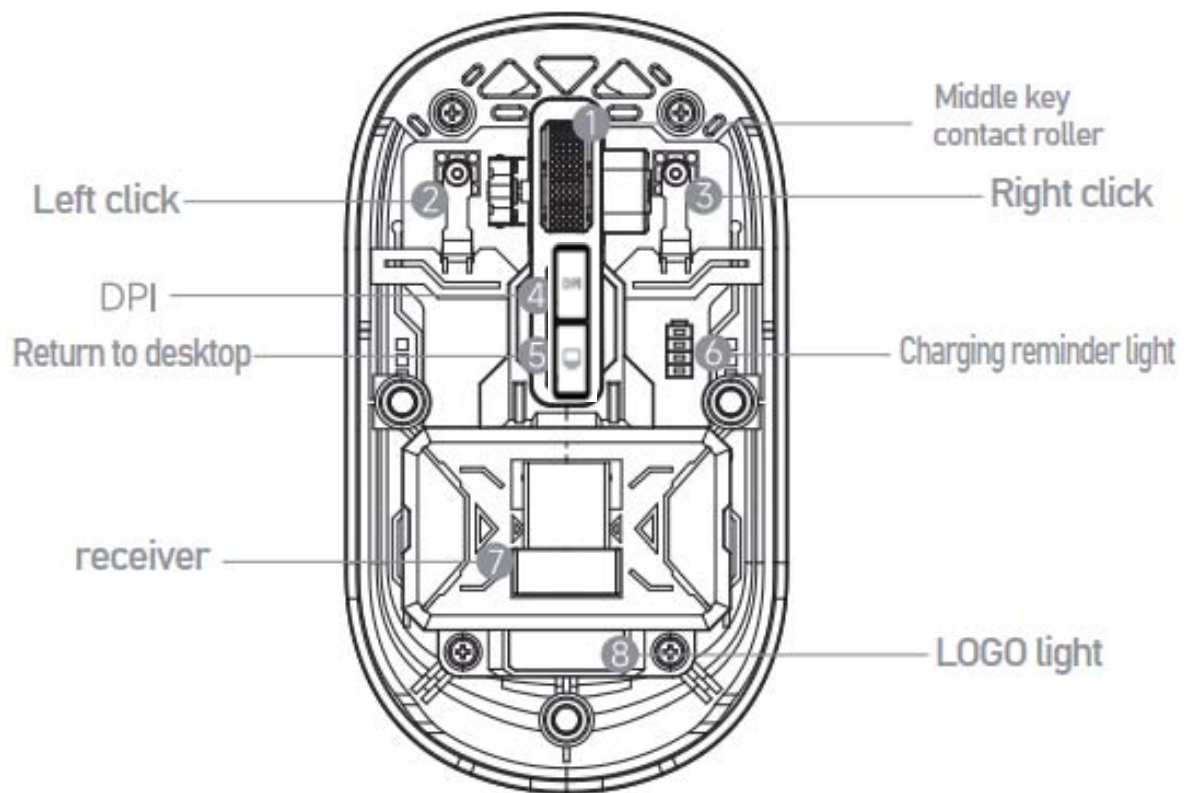
Model: 2604734
USER MANUAL

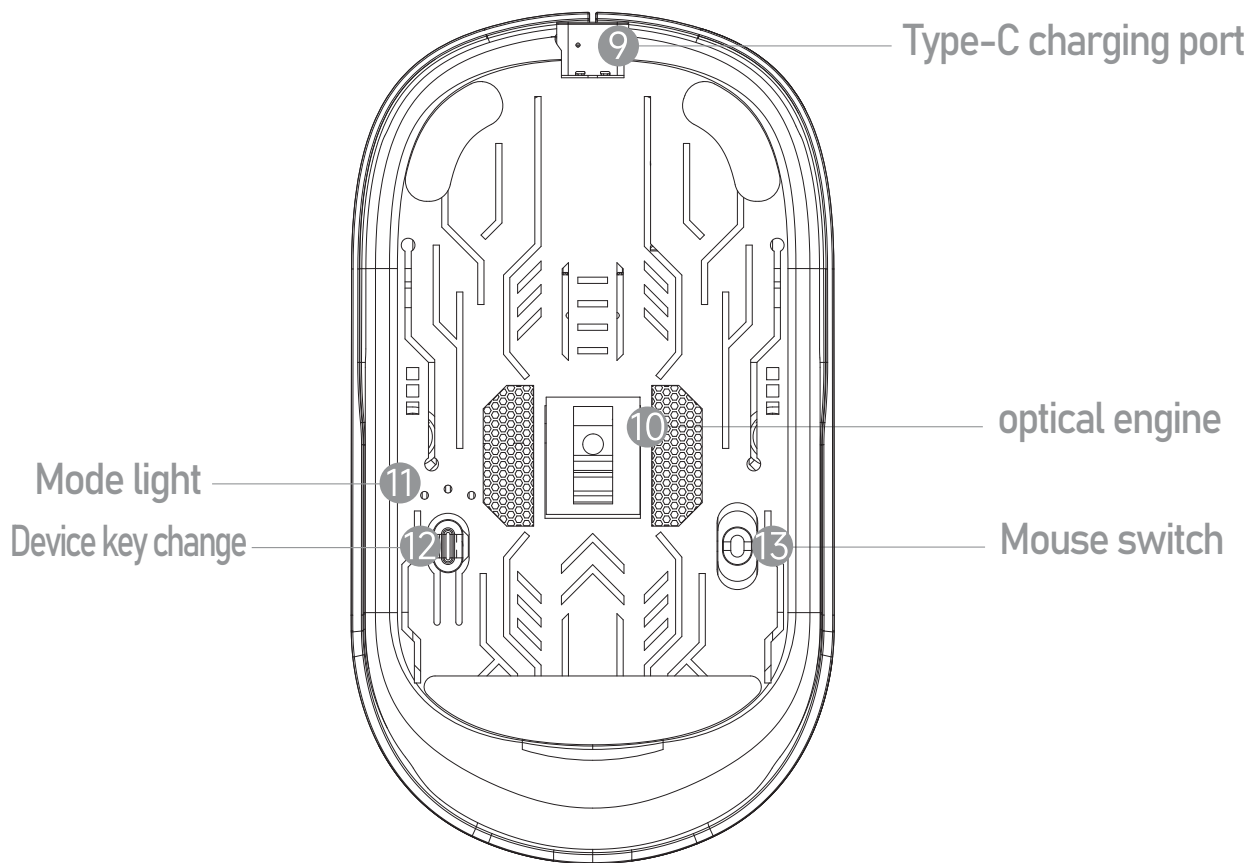


2.4GHz wireless and Bluetooth 1 and Bluetooth 2 triple-mode mouse

Thank you for choosing the RadioShack Transparent Wireless gaming mouse 2604734! We appreciate your purchase and hope you enjoy its quality. To get the most out of your device, please read these instructions carefully and keep this guide for future reference.

1->. Know your mouse:





2->. Operating instructions:

USB link:

1. Insert the receiver into the computer's USB port.
2. Switch the mouse power to "ON"; then short press the dual mode button (12) repeatedly until the Mode light (11) turns red and flashes; the red light will immediately turn off after the mouse is connected successfully.
3. Move the mouse or press the left and right buttons to use it normally.

Bluetooth connection (BT1 / BT2):

1. Switch the power at the bottom of the mouse to ON, then press the dual mode button (12) BT1 or BT2. The corresponding light (green for BT1, blue for BT2) will flash, indicating it is in pairing mode.
2. Open your tablet/computer/phone settings select Bluetooth interface and click "RS2604734 CH1/RS2604734 CH2" to connect. The light will turn off, signaling that it is connected successfully.
3. Move the mouse or click the left and right buttons to use it normally.

3->. Dual mode switching mode:

To switch between three connected devices, press the device switch button (12). The corresponding light will flash before turning off, enabling normal device operation.

4->. Charging method:

Charge the mouse via the computer's USB interface; the ⑥ light will flash during charging and remain on when fully charged.

5->. Specifications:

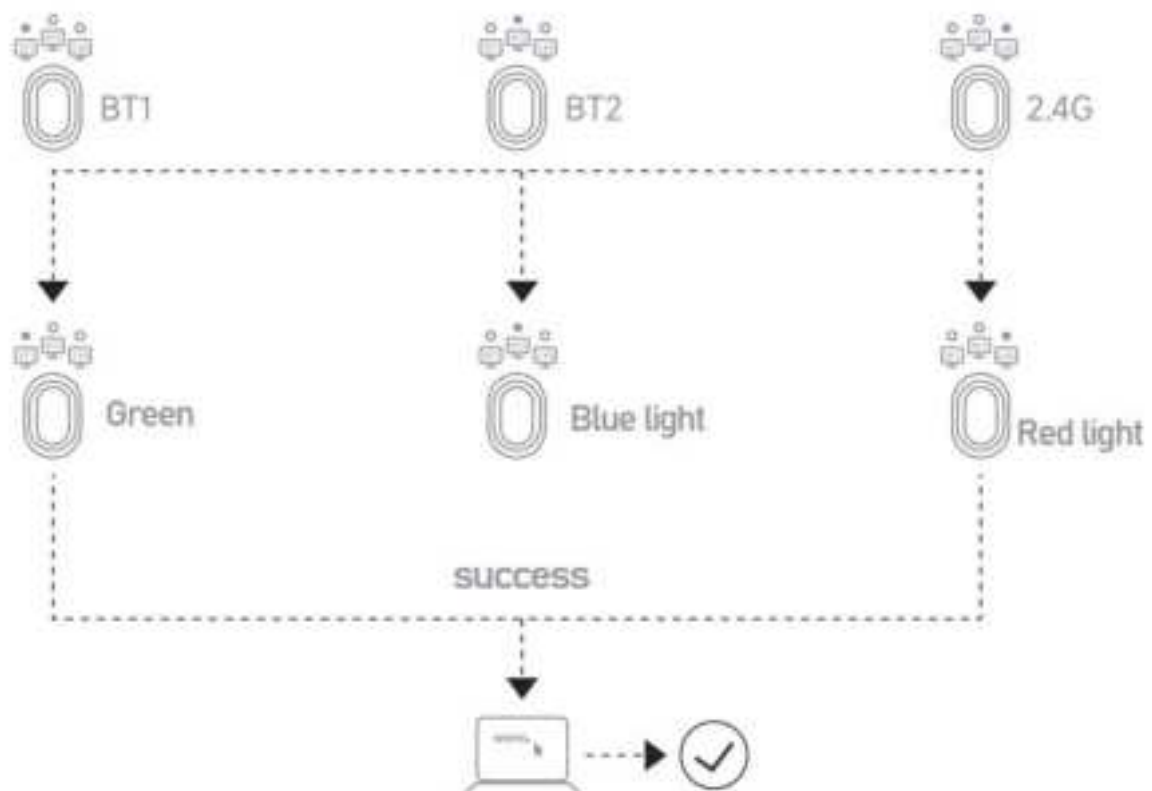
Dimensions	109*62*30mm
Number of keys	5
Weight	74.5g +/- 10g
Distance	10mt
Connection method	Wireless 24G+Bluetooth5.1+Bluetooth5.1
DPI Resolution	800-1200-1600
Battery Capacity	400mAh
Working Voltage	DC+3.7V
Working Current	<15mAh
System Compatibility	Windows/ MAC OS/ Android/ And mainstream interfaces.

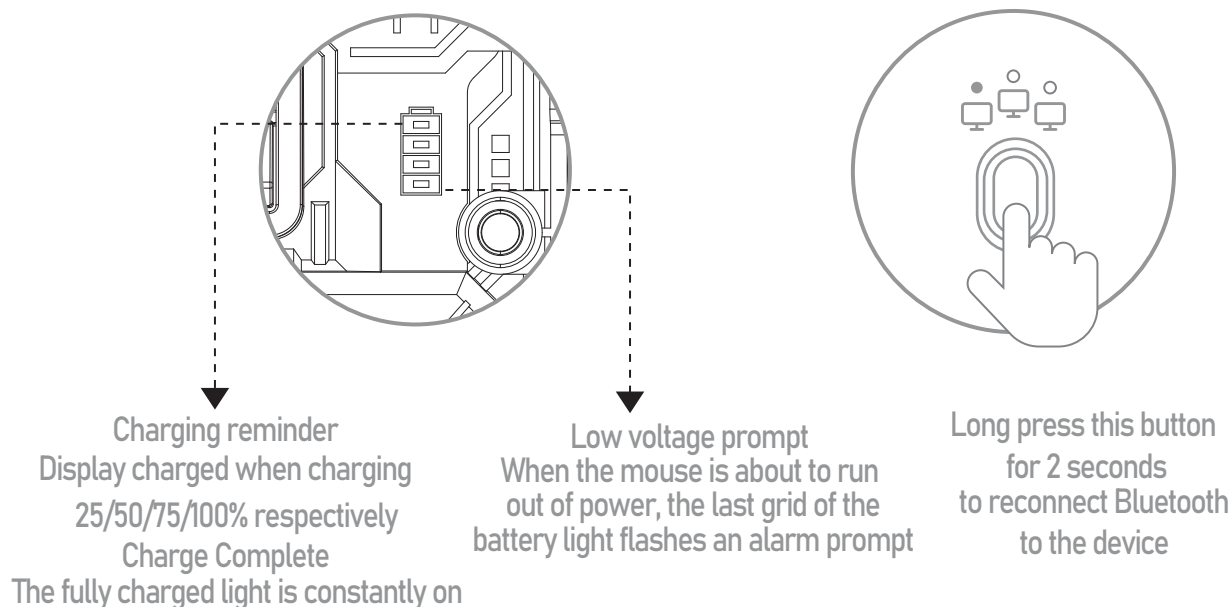
6->. Instructions and precautions for use:

1. If the mouse cursor moves slowly, check the battery level and charge it promptly.

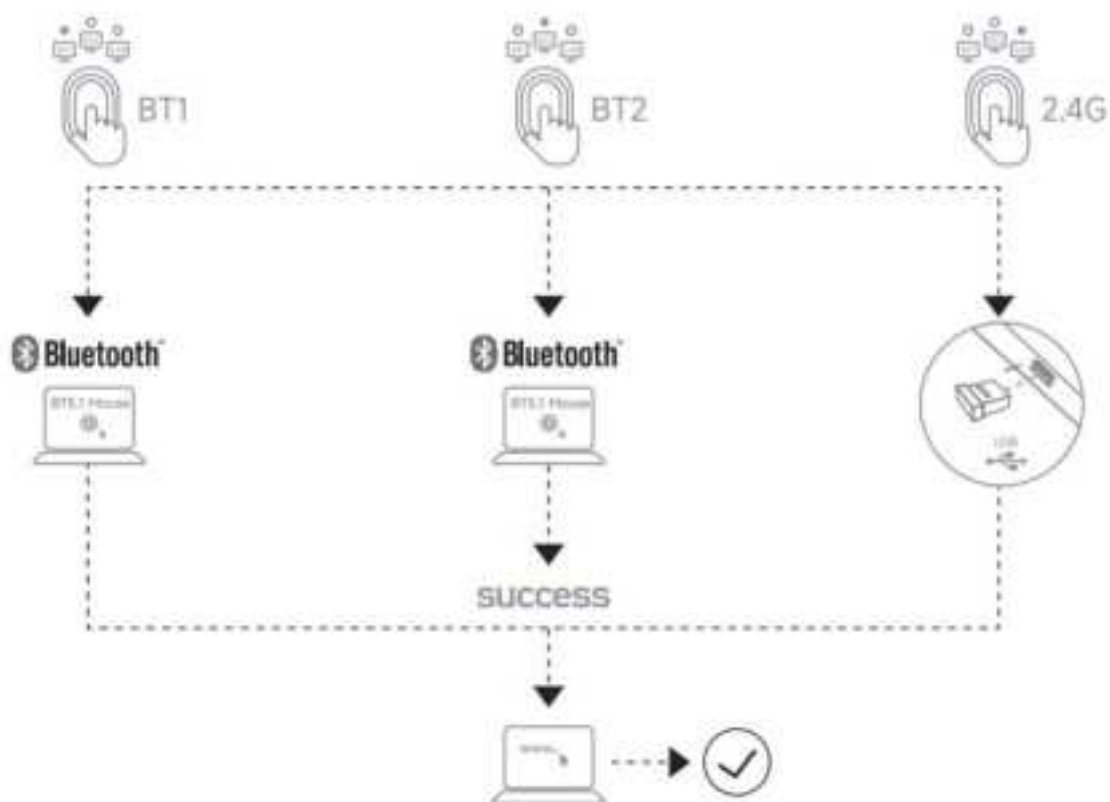
2. If the mouse won't connect, ensure the power switch on the bottom is on, select the correct connection method, or try a different USB port for the receiver.
3. To conserve power, manually turn off the power switch if the mouse is not in use for an extended period.
4. The mouse will automatically enter sleep mode after inactivity; move it or press any key to wake it up.
5. Do not disassemble or attempt to repair the product, as this may cause damage.

7->. Lighting Description:

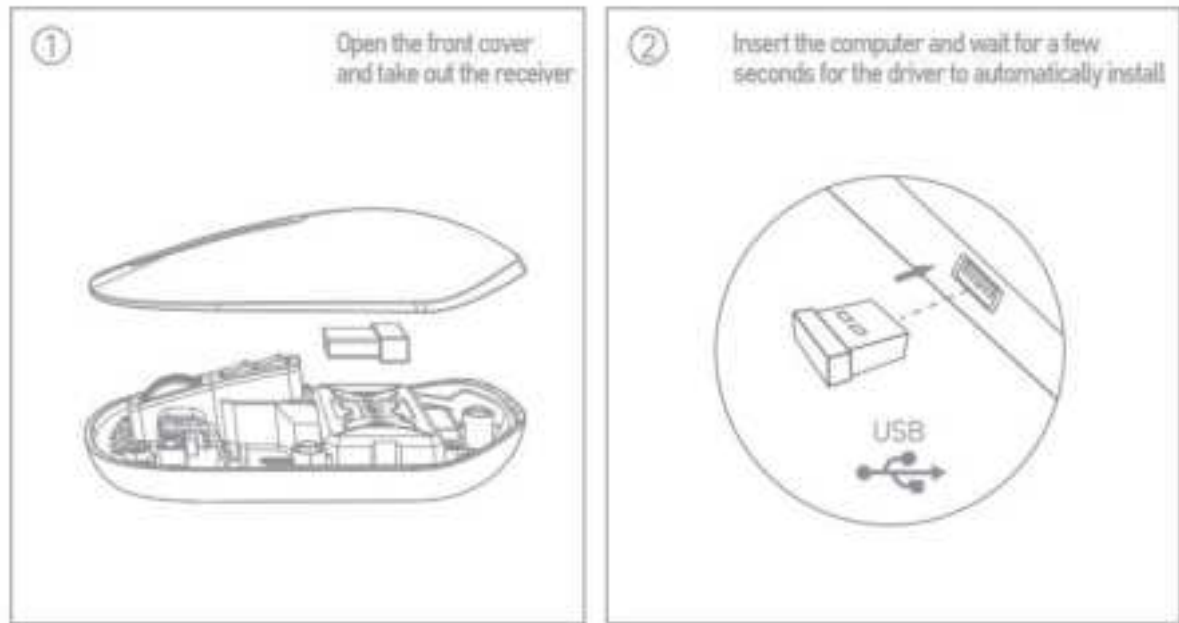




8->. Schematic diagram of mouse-connected devices:



9->. Receiver Description:



10->. Charging instructions - please read the manual before using the mouse:

1. Charge the mouse using the computer's USB interface.
2. Avoid using fast-charging mobile phone chargers.
3. Do not use low-quality, non-standard power adapters.
4. Refrain from using power adapters with overvoltage or overcurrent.
5. Keep away from high-temperature equipment while charging.
6. Do not charge the mouse while in use.
7. The red indicator light will be on during charging and will turn off when charging is complete.
8. Turn off the power switch if the mouse will not be used for an extended period.



User Guide 1: Safe and Correct Use of the Product:

- Do not disassemble or modify the product, except for battery removal and replacement.
- Disassembling or attempting repairs may cause damage.
- Avoid pointing infrared or laser beams at eyes or reflective surfaces.
- Do not immerse the product in liquids or expose it to hot or humid conditions.
- If the product is exposed to temperatures outside the specified range, disconnect the power until it stabilizes within the operating range.
- This product should be used with certified ITE computers and accessories.
- It is not suitable for children under 14 years old.
- Prolonged use for repetitive actions may cause nerve or muscle damage. If you experience pain, numbness, weakness, swelling, burning, cramps, or stiffness, consult a healthcare professional.
- Under normal conditions, this product poses no safety hazards. For malfunctioning issues, contact support. Ensure an authorized service center handles any necessary repairs.
- Unauthorized modifications will void the equipment warranty.

NOTE: This equipment has been tested and found to comply with the limits for a Class B digital device, pursuant to part 15 of the FCC Rules. These limits are designed to provide reasonable protection against harmful interference in a residential installation. This equipment generates, uses and can radiate radio frequency energy and, if not installed and used in accordance with the instructions, may cause harmful interference to radio communications. However, there is no guarantee that interference will not occur in a particular installation. If this equipment does cause harmful interference to radio or television reception, which can be determined by turning the equipment off and on, the user is encouraged to try to correct the interference by one or more of the following measures:

- Reorient or relocate the receiving antenna.
- Increase the separation between the equipment and receiver.
- Connect the equipment into an outlet on a circuit different from that to which the receiver is connected.
- Consult the dealer or an experienced radio/TV technician for help.

Changes or modifications not expressly approved by the party responsible for compliance could void the user's authority to operate the equipment.

This device complies with Part 15 of the FCC Rules. Operation is subject to the following two conditions: (1) this device may not cause harmful interference, and (2) this device must accept any interference received, including interference that may cause undesired operation.