



T6/T6R SMART THERMOSTAT

Registration and control with  
smartphone

Quick Guide

Online Guides:

<http://hwllhome.co/eut-T6>

For help, contact:  
**WEB:** [getconnected.honeywellhome.com](http://getconnected.honeywellhome.com)  
**PHONE:** 0300 130 1299

First step is to download the Honeywell Home-app from the App store or Google Play store:

Honeywell Home-app

With the Honeywell Home-app your thermostat will be connected with your own **2,4 GHz Wi-Fi network** and registered to your account, after this you can control the thermostat remotely.

**TIP**

Make sure you have a 2,4 GHz Wi-Fi network.  
The thermostat does not work on 5 GHz networks. When in doubt, check with your Internet provider or modem settings.

- 1 Create account

Create account with your email and activate from the email you receive back.
- 2 Log on

Log on and select the thermostat you have.
- 3 Status thermostat

Press 'Yes' in the following screens.
- 4 Select

Select the thermostat (name same as displayed on thermostat-screen).
- 5 Wi-Fi network

Select your Wi-Fi network and then 'Next'.
- 6 Wi-Fi connect

Thermostat connects with your Wi-Fi network.  
When successful press 'Done' Thermostat shows 'CONNECTED'
- 7 Conect

Press "Next".
- 8 Secure

Enter the code displayed on thermostat.
- 9 Configure

Select language and clock setting...
- 10 Configured

... and then 'Next'.
- 11 Complete config.

Press 'Next'.
- 12 Location

Choose a name for your location...
- 13 Name

...Then a name for the thermostat.
- 14 Register

The thermostat is now being registered to your account. This can take some minutes.
- 15 Registered

Thermostat is connected and registered, press 'Next'.
- 16 Geofence

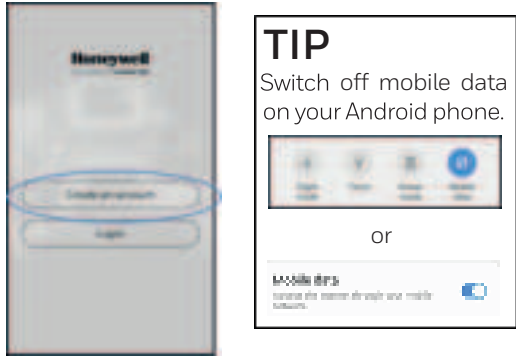
Geofencing can be set or skipped.
- 17 Siri set up

Siri can be set up or skipped.
- 18 Completed

Registration is complete and choose 'Done'.

ANDROID

1 Create account



Create account with your email and activate from the email you receive back.

2 Log on



Log on and select the thermostat you have.

3 Thermostat



Press 'Yes' in the following screens.

4 Start Network



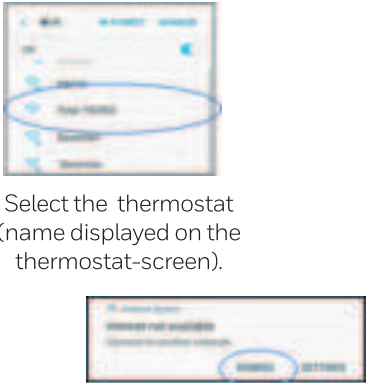
Press 'Next' after pressing 5 sec on the thermostat.

5 Wi-Fi network



The Android-app goes to the Wi-Fi settings. Choose 'Next'.

6 Select



Select the thermostat (name displayed on the thermostat-screen).

Press 'Dismiss' and then 'Back' of phone

7 Connect



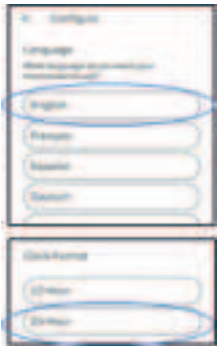
Press "Next".

8 Secure



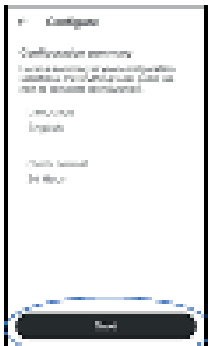
Enter the code displayed on thermostat.

9 Configure



Select language and clock setting...

10 Configured



... and then 'Next'.

11 Compl. config.



Press 'Next'.

12 Wi-Fi



Press 'OK' after reading the warning.

13 Select Wi-Fi



Select your Wi-Fi network and then 'Next'.



Enter your Wi-Fi password and then 'Next'.

14 Connecting



Thermostat makes connection with your Wi-Fi network and shows 'SUCCESS'

15 Location



Choose a name for your location...

16 Name



...Then a name for the thermostat.

17 Select Wi-Fi



Select your Wi-Fi network and then 'Next'.

18 Register



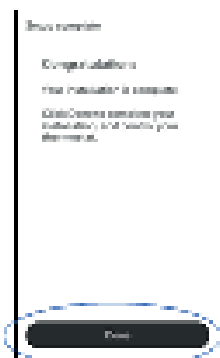
The thermostat is now being registered to your account. This can take some minutes.

19 Geofence



Geofencing can be set or skipped.

20 Completed



Registration is complete and choose 'Done'.

resideo  
www.resideo.com

Wi-Fi® is a registered trademark of Wi-Fi Alliance®

T6-T6R-REG-ENOH 8620 NL01 1019

© 2019 Resideo Technologies, Inc.  
This product is manufactured by Resideo and its affiliates. The Honeywell Home trademark is used under license from Honeywell International Inc.  
All rights reserved.