

## REPLACING THE REMOTE CONTROL

To ensure that Human Touch® products are repaired in a manner that is fully consistent with the practices used during the manufacturing process, Human Touch requires that all product repairs are performed using only factory-new parts and in accordance with these product repair instructions.

SERVICE LEVEL: 1

Tools Required: Phillips-head screwdriver

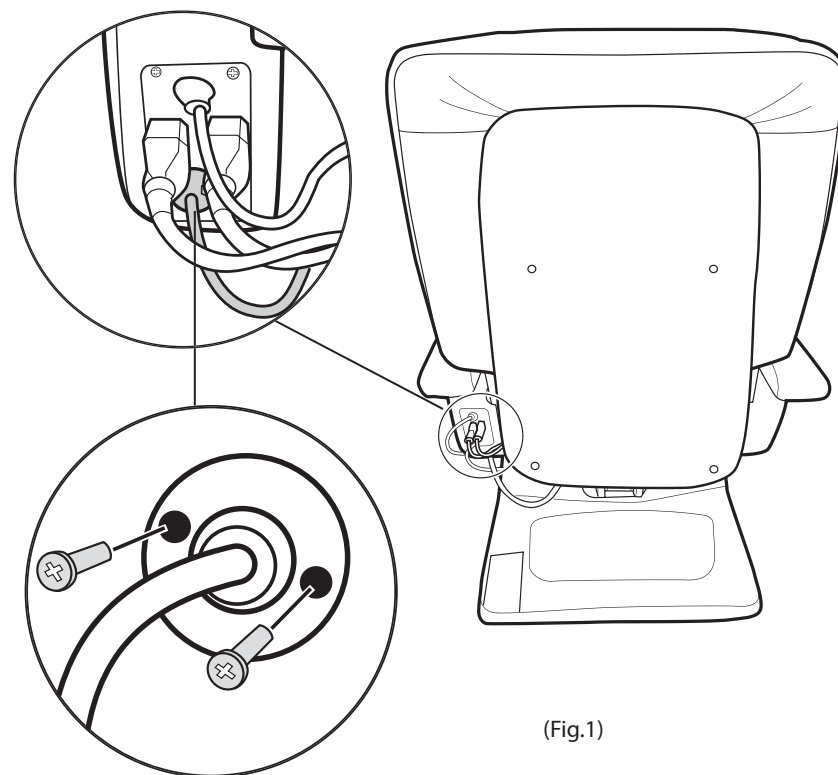
NOTE: SAVE ALL SCREWS FOR USE DURING REASSEMBLY.

### REMOVING THE REMOTE CONTROL

1. Power off the chair and unplug it.
2. Locate the remote control bracket on the back of the backrest (Fig.1).
3. Using a Phillips-head screwdriver, remove the two screws that secure the remote control bracket to the backrest cover
4. Pull the remote control cables through the backrest cover, then disconnect the cables.

### INSTALLING THE NEW REMOTE CONTROL

1. Connect the new remote control cables to the backrest remote control cables, then push the cables into the backrest.
2. Using a Phillips-head screwdriver, replace the two remote control bracket screws.
3. Power on the chair and verify that the new remote control works.



Remote control cable

(Fig.1)