

Connected Buildings
Product Selection Guide



Metalux

Celebrating 50+ years, Metalux offers an extensive line of LED lighting products including recessed, linear and industrial fixtures.

Metalux's complete family of luminaires are dedicated to the latest solid state lighting and driver technology for optimal performance and energy efficiency.

Metalux delivers innovation, quality, product availability, and responsiveness all with an affordable value proposition.

The product selection guides are simple yet powerful tools to help assist with product comparisons and selection based on features, performance and value.

- 2 Commercial LED - Planes of Light**
- 3 Commercial LED - Linear**
- 4 Commercial LED - Surface**
- 5 Specification LED - Recessed**
- 6 Industrial LED - High Bay**
- 7 Industrial LED - Vaportite**



Commercial LED

Planes of Light

Metalux

Good

Better

Best

Click on products to learn more

| | | Panels | | | AP GR | GR | RTC | FR | Cruze Retrofit | Cruze ST |
|----------------------------|----------------------------------|---------------|---------------|---|------------------|------------------|---------------|------------------|----------------|--|
| | | CGT | FP | FPS | | | | | | |
| APPLICABILITY ¹ | Education | ★★★ | ★★★ | ★★★ | ★★★ | ★★★ | ★★★ | ★★ | ★★★ | ★★★ |
| | Office | ★★ | ★★ | ★★★ | ★★ | ★★ | ★★★ | ★★★ | ★★ | ★★★ |
| | Healthcare | ★ | ★ | ★ | ★★ | ★★ | ★★ | ★★ | ★ | ★★ |
| | Retail | ★★ | ★★★ | ★★★ | ★★ | ★★ | ★★ | ★★ | ★ | ★★★ |
| FEATURES / PERFORMANCE | Sizes | 1x4, 2x2, 2x4 | 1x4, 2x2, 2x4 | 1x4, 2x2, 2x4 | 2x2, 2x4 | 1x4, 2x2, 2x4 | 1x4, 2x2, 2x4 | 2x2, 2x4 | 1x4, 2x2, 2x4 | 1x4, 2x2, 2x4 |
| | lm/W (Max) | 115 | 136 | 120 | 140 | 140 | 126 | 130 STD/150 HP | 138 | 157 |
| | Lum (Max) | 5,300 | 7,000 | 6,500 | 6,400 | 18,000 | 7,000 | 3200 STD/8000 HP | 5,000 | 17,000 |
| | Life (@60K) | L84 | L86 | L87 | L90 | L89 | L75 | L88 | L85 | L90 |
| | Lens | Frost, Smooth | Frost, Smooth | Frost, Smooth | Clear, Prismatic | Frost, Prismatic | Frost, Ribbed | Frost, Smooth | Frost, Ribbed | Round or Square, Frost - Ribbed or Smooth, Perf Inlays |
| | Emergency | Remote | Remote | Remote | No | Integrated | Integrated | Integrated | Integrated | Integrated |
| | CRI | 80+ | 80 / 90 | 80+ | 80+ | 80+ | 80+ | 80+ | 80+ | 80+ / 90 |
| | Sensor Location | Tile Mount | Tile Mount | Tile Mount | Tile Mount | Integrated | Integrated | Integrated | Integrated | Integrated |
| | DLC | Standard | Premium | Standard | Premium | Premium | Premium | Premium | Premium | Premium |
| | Door | No | No | No | Yes | Yes | No | Yes | None | Yes |
| | Lumen / CCT Select | No | No |  Yes  | No | No | No | No | No | No |
| | VividTune™ | No | No | No | No | Tunable White | No | No | No | Tunable White |
| INTEGRATED CONTROLS | Stand Alone Daylight / Occupancy | | | | | ✓ | ✓ | ✓ | ✓ | ✓ |
| | WaveLinx Lite | | | | | ✓ | | | ✓ | ✓ |
| | WaveLinx | | | | | ✓ | ✓ | ✓ | ✓ | ✓ |
| | DLVP | | | | | ✓ | | ✓ | | ✓ |

Notes: 1. ★★★ = high applicability, ★★ = medium applicability, ★ = low applicability, blank = non-applicable



Cooper Lighting Solutions
1121 Highway 74 South
Peachtree City, GA 30269
P: 770-486-4800
www.cooperlighting.com

Canada Sales
5925 McLaughlin Road
Mississauga, Ontario L5R 1B8
P: 905-501-3000
F: 905-501-3172

© 2021 Cooper Lighting Solutions
All Rights Reserved
Publication No. SA519028EN-web
March 2, 2021 12:44 PM

Cooper Lighting Solutions is a registered trademark.
All other trademarks are property of their respective owners.
Product availability, specifications, and compliances are subject to change without notice.

Commercial LED

Linear

Metalux

Good

Better

Best

Click on products to learn more



| | | Shoplights | SLES ² | ST | SLSTP | SSRK Retrofit | SNLED | SRL | SWLED | WSL |
|----------------------------|----------------------------------|----------------|----------------------------|----------------------------|---------------|----------------|----------------|----------------|-----------------------------------|---------------------|
| APPLICABILITY ¹ | Education | | ★ | ★★ | ★★★ | ★ | ★★★ | ★★★ | ★★★ | ★★ |
| | Office | | ★ | ★★ | ★★★ | ★ | ★★★ | ★★★ | ★★★ | ★★★ |
| | Healthcare | | | | ★ | ★ | ★★ | ★★ | ★ | ★★ |
| | Retail | | ★★★ | ★ | ★★ | ★★★ | ★★★ | ★★★ | ★ | ★★★ |
| | Industrial | | ★★ | ★★ | ★★ | ★★★ | ★★★ | ★★★ | ★★ | ★★ |
| | Residential | ★★★ | | ★★★ | ★★ | | | | | |
| FEATURES / PERFORMANCE | Length | 3', 4' Nominal | 4', 8' | 2', 4', 8' | 2', 4', 8' | 4', 8' | 2', 4', 8' | 4', 8' | 4' | 4', 8' |
| | lm/W (Max) | 105 | 167 (8ft) | 108 | 125 | 159 | 150 | 149 | 150 | 121 |
| | Lum (Max) | 4,600 | 8,700 | 4,200 | 10,500 | 8,000 / 4 ft. | 17,000 | 11,000 | 8,000 | 16,000 |
| | Life (@60K) | L70/50K | L70/50K ³ | L70/50K | L70/50K | L94 | L87 | L82 | L91 | L81 |
| | Lens | Frost, Poly | None ⁴ | White, Single or Dual Lens | Clear, Poly | Frost, Acrylic | Frost, Acrylic | Frost, Acrylic | (Vandal Resistant) Frost, Acrylic | WaveStream, Acrylic |
| | Emergency | None | Integrated | None | None | Integrated | Integrated | Integrated | Integrated | Integrated |
| | CRI | 80+ | 80+ | 80+ | 80+ | 80+ | 80+ | 80+ | 80+ | 80+ |
| | Sensor Location | N/A | Remote | Remote | Simple ("CS") | N/A | Integrated | Integrated | Integrated | Integrated |
| | DLC | Energy Star | Standard (TLED Lamps only) | Standard | Standard | Premium | Premium | Premium | Standard | Standard |
| INTEGRATED CONTROLS | Basic Occupancy | | | | ✓ | ✓ | ✓ | ✓ | ✓ | ✓ |
| | Stand Alone Daylight / Occupancy | | | | | ✓ | ✓ | ✓ | ✓ | ✓ |
| | WaveLinX Lite | | | | | | | ✓ | ✓ | ✓ |
| | WaveLinX | | | | | | | ✓ | ✓ | ✓ |
| | DLVP | | | | | | | | | ✓ |

Notes: 1. ★★★ = high applicability, ★★ = medium applicability, ★ = low applicability, blank = non-applicable. 2. w/T8 LED lamps included. 3. TLED lamp tested to B50 L70 requirement. LED lifetime means the length of time (in hours) until half of the LED light sources maintain at least 70% of their initial lumen output (B50, L70). 4. TLED CorePro lamp is glass tube. TLED MasterClass lamp is shatter resistant plastic.

Commercial LED Surface

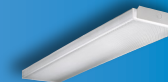
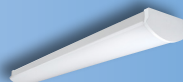
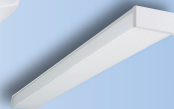
Metalux

Good

Better

Best

Click on products
to learn more



| | | FM CCT | WP | WPLD | LW | CWPLD | WNLED | WSNLED | BCLED | SWLED |
|----------------------------|----------------------------------|-------------------|----------------------|-------------|-----------------------|-------------|----------------|-----------------------|---------------|--------------------------------------|
| APPLICABILITY ¹ | Education | ★★ | ★★ | ★★ | ★★★ | ★★★ | ★★★ | ★★ | ★★ | ★★★ |
| | Office | ★ | ★ | ★★ | ★★ | ★★ | ★★ | ★★★ | ★ | ★★★ |
| | Healthcare | ★ | ★ | ★ | ★ | ★ | ★ | ★★ | ★★ | ★ |
| | Retail | ★★ | ★ | ★ | ★★ | ★★ | ★ | ★★★ | ★ | ★ |
| | Industrial | | ★ | | ★ | ★ | ★★ | | | ★★ |
| | Residential | ★★★ | ★★★ | ★★ | | | ★ | ★ | | |
| FEATURES / PERFORMANCE | Sizes | 9", 11", 15", 19" | 2' and 4', 5.1" wide | 2', 4' | 4', 6.8" wide | 4' | 2', 4' | 2', 4' | 2', 4' | 4' |
| | lm/W (Max) | 85 | 114 | 110 | 122 | 115 | 118 | 108 | 120 | 150 |
| | Lum (Max) | 2,400 | 3,400 | 4,700 | 4,617 | 5,000 | 5,000 | 6,500 | 4,800 | 8,000 |
| | Life (@60K) | L70/50K | L70/50K | L70/50K | L82 | L70/50K | L88 | L87 | L82 | L91 |
| | Lens | Frost / Acrylic | Prismatic Acrylic | Clear, Poly | White Ribbed Acrylic | Frost, Poly | Frost, Acrylic | Frost + Film, Acrylic | Frost, Smooth | (Vandal Resistant) Frost, Acrylic |
| | Emergency | No | No | No | Integrated | No | Integrated | Integrated | Integrated | Integrated |
| | CRI | 80+ | 80+ | 80/90 | 80+ | 80+ | 80+ | 80+ | 80+ | 80+ |
| | Row Mount | N/A | N/A | No | Yes | Yes | Yes | Yes | Yes | No |
| | Sensor Location | N/A | N/A | N/A | N/A | N/A | N/A | N/A | N/A | Integrated |
| | DLC | Energy Star | Standard | Standard | DLC, Title 24 Non-Res | Standard | Standard | Standard | None | Standard |
| INTEGRATED CONTROLS | Basic Occupancy | | | | | | | | | ✓ |
| | Stand Alone Daylight / Occupancy | | | | | | | | | ✓ |
| | WaveLinx Lite | | | | | | | | | ✓ |
| | WaveLinx | | | | | | | | | ✓ |
| | DLVP | | | | | | | | | |

Notes: 1. ★★★ = high applicability, ★★ = medium applicability, ★ = low applicability, blank = non-applicable

Specification LED

Recessed

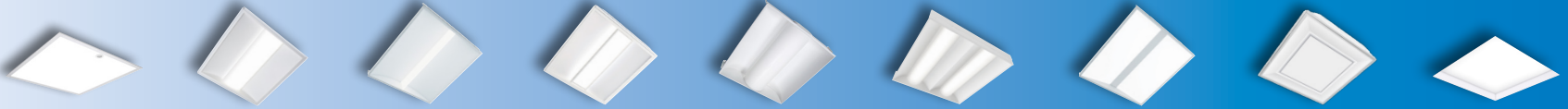
Metalux

Good

Better

Best

Click on products to learn more



| | | FPX | Cruze SB | SkyRidge | RLN | Ovation | Accord | Encounter | Perceive | InDepth |
|------------------------|----------------------------------|---------------|---------------------------------|----------------------|-----------------|------------------|-----------------|----------------------------|---------------------------|---|
| APPLICABILITY | Education | ★★★ | ★★★ | ★ | ★★ | ★★ | ★ | ★★ | ★★★ | ★★★ |
| | Office | ★★★ | ★★ | ★★★ | ★★★ | ★★★ | ★★★ | ★★★ | ★★★ | ★★★ |
| | Healthcare | ★★ | ★★★ | ★★ | ★★ | ★ | ★★ | ★★★ | ★★★ | ★★★ |
| | Retail | ★★★ | ★★ | ★★ | ★★ | ★★★ | ★★ | ★★ | ★★ | ★★ |
| FEATURES / PERFORMANCE | Sizes | 1x4, 2x2, 2x4 | 1x4, 2x2, 2x4 | 1x2, 1x4, 2x2, 2x4 | 1x4, 2x2, 2x4 | 1x4, 2x2, 2x4 | 1x4, 2x2, 2x4 | 1x2, 1x4, 2x2, 2x4, Metric | 1x4, 2x2, 2x4 | 1x4, 2x2, 2x4 |
| | lm/W (Max) | 130 | 157 | 150 | 139 | 109 | 127 | 141 | 137 | 127 |
| | Lumens (Max) | 6,400 | 7,500 | 6,400 | 8,000 | 5,000 | 7,300 | 7,400 | 9,000 | 8,000 |
| | Life (@60K) | L87 | L84 | L92 | L93 | L89 | L89 | L92 | L85 | L86 |
| | Lens | Frost, Smooth | Round, Frost - Ribbed or Smooth | Acrylic (WaveStream) | Frosted Acrylic | Metal Perforated | Frosted Acrylic | Acrylic (WaveStream) | Acrylic (Perceive Optics) | 1", 2" Cube Regress 1", 2", Cube Drop 2" Curve Regress & Drop |
| | Service from Below | No | Yes | No | Yes | No | Yes | No | Yes | No |
| | Emergency | Integrated | Integrated | Integrated | Integrated | Integrated | Integrated | Integrated | Integrated | Integrated, Indicator is Remote |
| | CRI | 80+ | 80+ / 90 | 80+ | 80+ / 90 | 80+ | 80+ | 80+ / 90 | 80+ / 90 | 80+ |
| | Sensor Location | Integrated | Integrated | Integrated | Integrated | Tile Mount | Integrated | Integrated | Integrated | Tile Mount |
| | DLC | Premium | Premium | Premium | Premium | Standard | Premium | Premium | Premium | Premium |
| | Air Venting | None | None | Yes | None | Yes | Yes | Yes | None | Planned |
| | VividTune™ | No | Tunable White | No | Tunable White | No | No | Tunable White | Planned | No |
| INTEGRATED CONTROLS | Stand Alone Daylight / Occupancy | ✓ | ✓ | ✓ | ✓ | ✓ | ✓ | ✓ | ✓ | |
| | WaveLinX Lite | ✓ | ✓ | ✓ | ✓ | | | ✓ | ✓ | ✓ |
| | WaveLinX | ✓ | ✓ | ✓ | ✓ | ✓ | ✓ | ✓ | ✓ | ✓ |
| | DLVP | ✓ | ✓ | ✓ | ✓ | | ✓ | ✓ | ✓ | ✓ |

Notes: 1. ★★★ = high applicability, ★★ = medium applicability, ★ = low applicability, blank = non-applicable

Good

Better

Best

Click on products
to learn more



| | | LHB | VHB | UHB | ILED | Steeler | HBLED | OHB | XHB | Benchmark |
|----------------------------|----------------------------------|-----------------|-------------------|-----------------|----------------|----------------|-----------------|-----------------|-----------------|-----------------|
| APPLICABILITY ¹ | Big Box Retail | ★ | ★ | ★★ | ★★★ | ★★ | ★ | ★★★ | | ★ |
| | Sports / Recreation | ★★ | ★★ | ★★ | ★ | ★★★ | ★★ | ★★★ | | ★★ |
| | Warehouses | ★★★ | ★★★ | ★★ | ★★★ | ★★★ | ★★★ | ★★★ | | |
| | Manufacturing | ★★ | ★★ | ★★ | ★ | ★★★ | ★★★ | ★★★ | ★★★ | ★★★ |
| | Cold Storage | ★ | ★★★ | ★ | | ★ | ★ | ★★★ | | ★★ |
| | Large Indoor | | | | | ★★ | ★★★ | ★★★ | ★★★ | ★★ |
| | Complex Environments | | ★ | ★★ | | ★ | | | ★★★ | ★★★ |
| FEATURES / PERFORMANCE | Lumen Range | 12,000 - 36,000 | 9,000 - 24,000 | 12,000 - 30,000 | 5,000 - 32,000 | 9,000 - 36,000 | 12,000 - 60,000 | 12,000 - 60,000 | 60,000 - 85,000 | 12,000 - 70,000 |
| | Efficacy (Max) | 140 lm/W | 147 lm/W | 137 lm/W | 155 lm/W | 152 lm/W | 186 lm/W | 207 lm/W | 132 lm/W | 181 lm/W |
| | CRI | 80 | 70, 80, 90 | 80 | 80 | 80 | 70, 80 | 70, 80, 90 | 70, 80 | 70, 80 |
| | Distribution | M | N, W | M | N, W | N, M, W | N, W | N, M, W | N, M, W, EW, UW | N, M, W |
| | Sizes | 13" x 2' & 4' | < 2' | 12" Dia | 4', 8' | 17" Dia | 4' | Scalable | 22" Dia | 17", 25" Dia |
| | Housing ² | CRS | CRS / Extruded | Diecast | CRS | CRS / Diecast | CRS | CRS | Diecast | Diecast |
| | Lensing | Acrylic | Polycarbonate | Polycarbonate | Optional | Polycarbonate | Optional | Acrylic | Polycarbonate | Acrylic |
| | Uplight | None | None | None | Up to 5% | Up to 10% | None | None | None | None |
| | Life (@ 60K hrs) | L84 | L83 | L91 | L86 | L88 | L84 | L96 | L87 | L92 |
| | Ambient Range | -20C to 50C | -40C to 40C | -40C to 45C | -40C to 35C | -40C to 55C | -40C to 55C | -40C to 55C | -40C to 65C | -40C to 65C |
| | Emergency | None | Remote | None | Integrated | Remote | Integrated | Integrated | Remote | Remote |
| | Ratings | Damp | Damp | IP65 | Damp | IP65 Optics | Damp | Damp | IP66, NEMA 4X | IP66 |
| | DLC | Premium | Standard, Premium | Premium | Premium | Premium | Premium | Premium | Premium | Premium |
| INTEGRATED CONTROLS | Basic Occupancy | | ✓ | | ✓ | ✓ | ✓ | ✓ | | ✓ |
| | Stand Alone Daylight / Occupancy | | ✓ | | ✓ | ✓ | ✓ | ✓ | | ✓ |
| | WaveLinX | | ✓ | | | ✓ | ✓ | ✓ | | ✓ |
| | Enlighted ³ | | ✓ | | | ✓ | ✓ | ✓ | | ✓ |

Notes: 1. ★★★ = high applicability, ★★ = medium applicability, ★ = low applicability, blank = non-applicable

2. CRS=Cold-rolled Steel, Extruded=Extruded Aluminum, Diecast=Diecast Aluminum.

3. Location data for asset tracking.

Metalux's sealed and gasketed products deliver maximum operation and reliability in complex environments where the elements require more than just a standard light fixture.



Click on products
to learn more

Good

Better

Best

| | | APVT | VT2 | VT3 | VT4S | VT4 |
|----------------------------|----------------------------------|---------------|------------------------|------------------------|------------------------|------------------------|
| APPLICABILITY ¹ | Canopy | ★★ | ★★ | ★★ | | |
| | Storage | ★★★ | ★★★ | ★★ | | |
| | Parking Garage | | ★★ | ★★★ | | |
| | Warehouse | ★ | ★★★ | ★★★ | ★ | ★ |
| | Food Processing | | ★★ | ★★★ | ★★ | ★★ |
| | Manufacturing | | ★★ | ★★ | ★★★ | ★★★ |
| | Complex Environments | | ★ | ★★★ | ★★★ | ★★★ |
| FEATURES / PERFORMANCE | Lumen Range | 2,000 - 4,000 | 2,000 - 22,000 | 2,000 - 8,000 | 9,000 - 18,000 | 9,000 - 30,000 |
| | Efficacy (Max) | 132 lm/W | 150 lm/W | 154 lm/W | 165 lm/W | 146 lm/W |
| | Distribution ² | G | G, W | G, W, P | G | G |
| | Sizes | 2', 4' | 2', 4', 8' | 2', 4' | 2' | 4' |
| | Housing | Polycarbonate | Fiberglass/Polyester | Fiberglass/Polyester | Fiberglass | Fiberglass |
| | Lensing | Polycarbonate | DR Acrylic or Polycarb | DR Acrylic or Polycarb | DR Acrylic or Polycarb | DR Acrylic or Polycarb |
| | Wet Location | Yes | Yes | Yes | Yes | Yes |
| | IP Rating | None | None | IP65, 66, 67 | IP65, 66, 67, 69 | IP65, 67 |
| | NSF | None | Yes | Yes | Yes | Yes |
| | NEMA 4X | None | None | None | Yes | Yes |
| | Life (@60K hrs) | L70 at 54K | L91 | L91 | L91 | L92 |
| | Ambient Range | -20C to 30C | -40C to 35C | -40C to 50C | -40C to 40C | -40C to 40C |
| | Emergency | None | Yes | Yes | Yes | Yes |
| | Vandal Resistant | None | Optional | Optional | Optional | Optional |
| | DLC | Standard | Premium | Premium | Premium | Premium |
| INTEGRATED CONTROLS | Basic Occupancy | | ✓ | ✓ | ✓ | ✓ |
| | Stand Alone Daylight / Occupancy | | ✓ | ✓ | ✓ | ✓ |
| | WaveLinx | | | | | |
| | Enlighted ³ | | | | | |

Notes: 1. ★★★ = high applicability, ★★ = medium applicability, ★ = low applicability, blank = non-applicable
 2. G=General, W=Wide, P=Parking Garage.
 3. Location data for asset tracking.

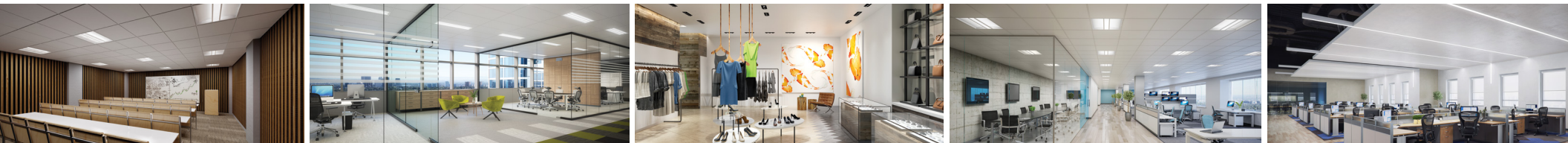
Corelite Neo-Ray

Corelite and Neo-Ray offer a unique array of high performance LED luminaires perfectly suited for today's architectural interior environments.

Combining modern details and high optical performance, Corelite and Neo-Ray's innovative approach to linear, recessed and surface-mounted luminaires make it the ultimate solution for applications with both demanding energy requirements and uncompromising aesthetics.

The product selection guides are simple yet powerful tools to help assist with product comparisons and selection based on features, performance and value.

- 9-10 Architectural LED - Linear Suspended**
- 11 Architectural LED - Recessed**
- 12 Architectural Linear LED- Lines of Light**



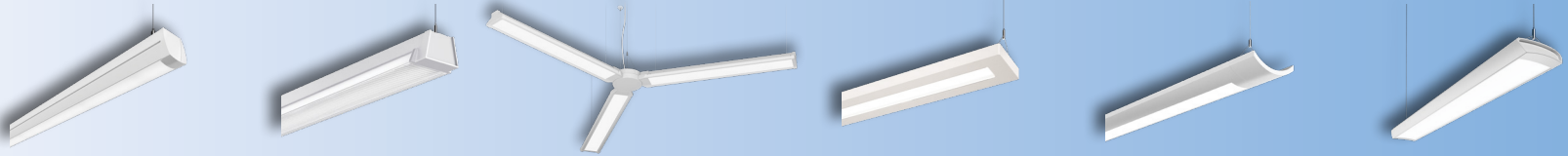
Architectural LED

Linear Suspended

Good

Better

Click on products to learn more



| | | Hugo | RZL | WSLA | Jaylum | Iridium i3 | Continua CTA |
|------------------------|----------------------------------|-----------------------------------|---------------------------------|---|--------------------|--------------------|------------------------------|
| APPLICABILITY | Education | ★★★ | ★★ | ★★ | ★★★ | ★★★ | ★★★ |
| | Office | ★★ | ★ | ★★★ | ★★★ | ★★ | ★★ |
| | Healthcare | ★★ | ★★ | ★★ | ★★ | ★★ | ★★ |
| | Retail | ★★★ | ★★★ | ★★★ | ★ | ★ | ★★ |
| FEATURES / PERFORMANCE | Construction | Extruded Aluminum | Cold Rolled Steel | Steel/Extruded Aluminum | Cold Rolled Steel | Cold Rolled Steel | Extruded Aluminum |
| | Lengths | 4', 8', 12', Cont. | 4', 8', 12', Cont. | 4', 8', Cont. | 4', 8', Cont. | 4', 8', Cont. | 4', 8', 12', Cont. |
| | Pattern / Layout | Straight | Straight | Straight, Intersection (Up to 6-way with hub) | Straight | Straight | Straight |
| | lm/W (Max) | 145 | 135 | 133 | 157 | 158 | 147 |
| | Lumens (Max) | 8000 (2000 lms/ft) | 8800 (2200 lms/ft) | 8000 (2000 lms/ft) | 8000 (2000 lms/ft) | 8000 (2000 lms/ft) | 6000 (1500 lms/ft) |
| | Up/Down % Options | 2 | 2 | 3 | 5 | 5 | 4+ |
| | CIE Type | Direct, Semi-Direct | Direct, Semi-Direct | Direct, Semi-Direct | Direct/Indirect | Direct/Indirect | Direct, Direct/Indirect |
| | Life (@60K) | L85 | L85 | L93 | L93 | L93 | L84 |
| | Shielding | Frost - Smooth, Drop Lens, Baffle | Frost -Linear Prismatic, Baffle | WaveStream - Acrylic | Frost - Smooth | Frost - Smooth | Frost - Continuous Roll Lens |
| | Companion Family Fixtures | Surface | Surface | Surface | Wall, Sconce | - | Wall |
| | Driver Location | Integral | Integral | Integral | Integral | Integral | Integral |
| | Emergency | Integrated | Integrated | Integrated | Integrated | Integrated | Integrated |
| | CRI | 80+ / 90 | 80+ / 90 | 80+ / 90 | 80+ / 90 | 80+ / 90 | 80+ / 90 |
| | Sensor Location | Integrated, Side Mount | Integrated | Integrated, Fixture or Hub | Integrated | Integrated | Integrated, Side Mount |
| | DLC | Premium | Premium | Premium | Premium | None | Premium |
| | VividTune™ | No | No | No | Tunable White | Tunable White | No |
| INTEGRATED CONTROLS | Stand Alone Daylight / Occupancy | | ✓ | ✓ | ✓ | ✓ | |
| | WaveLinx Lite | ✓ | ✓ | ✓ | ✓ | ✓ | ✓ |
| | WaveLinx | ✓ | ✓ | ✓ | ✓ | ✓ | ✓ |
| | Enlighted | ✓ | ✓ | ✓ | ✓ | ✓ | ✓ |
| | DLVP | | | | | | |

Notes: 1. ★★★ = high applicability, ★★ = medium applicability, ★ = low applicability, blank = non-applicable

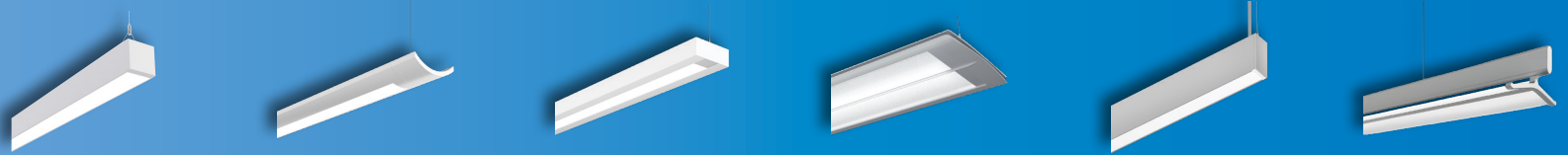
Architectural LED

Linear Suspended (continued)

Metalux | Corelite | Neo-Ray

Best

Click on products
to learn more



| | | Continua SQ4 | Iridium i2 WaveStream | Element/Loft/Vertechs WaveStream | Divide | Define | Converge |
|------------------------|----------------------------------|---|--------------------------|----------------------------------|---|--|------------------------------|
| APPLICABILITY | Education | ★★★ | ★★★ | ★★★ | ★★ | ★★ | ★★★ |
| | Office | ★★★ | ★★ | ★★ | ★★★ | ★★★ | ★★★ |
| | Healthcare | ★★ | ★★ | ★★ | ★ | ★★ | ★ |
| | Retail | ★★ | ★ | ★ | ★★ | ★ | ★★ |
| FEATURES / PERFORMANCE | Construction | Extruded Aluminum | Cold Rolled Steel | Extruded Aluminum | Extruded Aluminum | Extruded Aluminum | Extruded Aluminum |
| | Lengths | 2', 4', 6', 8', 12', Cont. | 4', 8', Cont. | 4', 8', 12', Cont. | 4', 8', Cont. | 2' - 12', Cont. | 4', 8', Cont. |
| | Pattern / Layout | Straight | Straight | Straight | Straight | Straight, Corners, Intersection | Straight |
| | lm/W (Max) | 147 | 114 | 116 | 140 | 164 | 119 |
| | Lumens (Max) | 10,800+ lm (2,700+ lms/ft) | 7200 (1800 lms/ft) | 7200 (1800 lms/ft) | 6000 (1500 lms/ft) | 9900 (2475 lms/ft) | 6700 (1700 lms/ft) |
| | Up/Down % Options | 28+ | 3 | 3 | 2 | ∞ | 3 |
| | CIE Type | Direct, Direct/Indirect, Indirect | Direct, Direct/Indirect | Direct, Direct/Indirect | Direct, Direct/Indirect | Direct, Direct/Indirect, Indirect | Direct, Direct/Indirect |
| | Life (@60K) | L84 | L81 | L81 | L87 | L90 | L85 |
| | Shielding | Frost - Continuous Roll Lens Black/White Louvered Baffle | Frost - Linear Prismatic | Frost - Smooth | WaveStream - Acrylic Specular, Diffuse | Frost - Smooth, Drop & Regressed, Asymmetric and Batwing Lens | WaveStream - Acrylic Diffuse |
| | Companion Family Fixtures | Recessed, Wall | - | - | Surface, Wall, Recessed | Surface, Wall, Recessed, Perimeter | - |
| | Driver Location | Integral | Integral | Integral | Integral | Integral | Remote w/ Luxwire |
| | Emergency | Integrated | Integrated | Integrated | Integrated | Integrated | Remote |
| | CRI | 80+ / 90 | 80+ / 90 | 80+ / 90 | 80+ / 90 | 80+ / 90 | 80+ / 90 |
| | Sensor Location | Integrated, Endcap/Side Mount | Integrated | Integrated | Integrated | Integrated | Tile Mount |
| | DLC | Premium | Standard | Standard | Premium | Premium | None |
| | VividTune™ | Tunable White | No | No | No | Tunable White | No |
| INTEGRATED CONTROLS | Stand Alone Daylight / Occupancy | | ✓ | ✓ | | ✓ | ✓ |
| | WaveLinx Lite | ✓ | | | ✓ | ✓ | |
| | WaveLinx | ✓ | ✓ | ✓ | ✓ | ✓ | ✓ |
| | Enlighted | ✓ | ✓ | ✓ | ✓ | ✓ | ✓ |
| | DLVP | | | | | | ✓ |


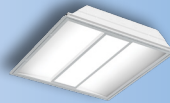

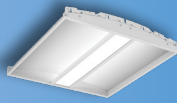



Notes: 1. ★★★ = high applicability, ★★ = medium applicability, ★ = low applicability, blank = non-applicable

Architectural LED Recessed

Corelite

Whether lighting schools, offices, or hospitals on a budget, **Corelite's** commercial recessed products offer a complete family of innovative, affordable, and energy saving LED solutions for your next project.



| | | Good | | Better | | Best | | | | | | | | | |
|------------------------|----------------------------------|---|--|--|--|---|--|---|--|---|--|---|--|---|--|
| | |  | |  | |  | |  | |  | |  | |  | |
| | | Class RX/ZX | | Class D3X | | Class R2X | | Bridge | | InDepth | | Divide | | Class R3/Z3 | |
| APPLICABILITY | Education | ★★★ | | ★★ | | ★★★ | | ★★ | | ★★★ | | ★★ | | ★ | |
| | Office | ★★★ | | ★★★ | | ★★★ | | ★★★ | | ★★★ | | ★★★ | | ★★★ | |
| | Healthcare | ★ | | ★★ | | ★★★ | | ★ | | ★★ | | ★★★ | | ★★ | |
| | Retail | ★★ | | ★★ | | ★★ | | ★★ | | ★★ | | ★ | | ★ | |
| FEATURES / PERFORMANCE | Sizes | 1x4, 2x2, 2x4 | | 1x4, 2x2, 2x4 | | 1x4, 2x2, 2x4, Metric | | 1x4, 2x2, 2x4, Metric | | 1x4, 2x2, 2x4 | | 1x4, 2x2, 2x4 | | 1x4, 2x2, 2x4, Metric | |
| | lm/W (Max) | 145 | | 139 | | 134 | | 118 | | 127 | | 137 | | 141 | |
| | Lumens (Max) | 7600 | | 7800 | | 8000 | | 7300 | | 9000 | | 7500 | | 7200 | |
| | Life (@60K) | L94 | | L93 | | L87 | | L80 | | L84 | | L87 | | L87 | |
| | Lens | Round (R), Flat (Z) Frost - Smooth | | Frost - Smooth, Perf Inlays | | Round (R), Frost - Smooth | | Acrylic (Wavestream), Perf Inlays | | 1", 2" Cube Regress 1", 2", 3" Cube Drop 2" Curve Regress & Drop | | Acrylic (Wavestream), Specular, Diffuse | | Round (R), Flat (Z) Frost - Ribbed, Perf Inlays | |
| | Emergency | Integrated | | Integrated | | Integrated | | Integrated | | Integrated, Indicator is Remote | | Integrated | | Integrated | |
| | CRI | 80+ / 90 | | 80+ / 90 | | 80+ / 90 | | 80+ / 90 | | 80+ | | 80+ / 90 | | 80+ / 90 | |
| | Sensor Location | Integrated | | Integrated | | Tile Mount | | Integrated | | Tile Mount | | Integrated | | Tile Mount | |
| | DLC | Standard | | Standard | | Standard | | Standard | | Premium | | Premium | | Premium | |
| | Air Return | Yes | | None | | Yes | | Yes, concealed | | Planned | | None | | Yes | |
| | VividTune™ | Tunable White | | Tunable White | | No | | No | | No | | No | | No | |
| INTEGRATED CONTROLS | Stand Alone Daylight / Occupancy | ✓ | | ✓ | | | | ✓ | | | | ✓ | | | |
| | WaveLinx Lite | ✓ | | ✓ | | | | ✓ | | | | | | | |
| | WaveLinx | ✓ | | ✓ | | | | ✓ | | | | ✓ | | | |
| | WaveLinx, No Sensor | ✓ | | ✓ | | | | | | ✓ | | | | | |
| | Enlighted | ✓ | | ✓ | | ✓ | | ✓ | | ✓ | | ✓ | | ✓ | |
| | DLVP | ✓ | | ✓ | | | | ✓ | | ✓ | | | | | |

Notes: 1. ★★★ = high applicability, ★★ = medium applicability, ★ = low applicability, blank = non-applicable

Architectural Linear LED

Lines of Light

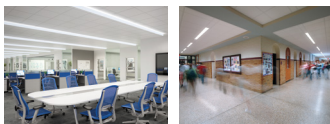
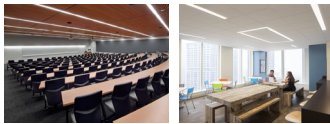
Metalux | Corelite | Neo-Ray

Good

Better

Best

Whether lighting contemporary architectural spaces or general area lighting, **Cooper Lighting Solution's architectural linear LED** products offer a complete family of innovative, affordable, and energy saving LED solutions for your next project.



Click on products to learn more

| | | Metalux RBG | Metalux RCG | Corelite CL | Neo-Ray Define Standard | Neo-Ray Define Premium |
|----------------------------|--|-----------------------------|---------------------------|--------------------------------|--|--|
| APPLICABILITY ¹ | Office | ★★ | ★★ | ★★ | ★★★ | ★★★ |
| | Secondary Education | ★★ | ★★ | ★★ | ★★★ | ★★ |
| | Primary Education | ★★★ | ★★★ | ★★★ | ★★ | ★ |
| | Healthcare | ★★ | ★ | ★ | ★★ | ★★★ |
| | Tenant Improvement | ★★★ | ★★★ | ★★★ | ★★ | ★ |
| FEATURES / PERFORMANCE | Apertures | 4" | 3" | 2", 4" | 1.5", 2", 3", 4", 5" | 1.5", 2", 3", 4", 5" |
| | Sizes | Fixed 2', 4', 8' | 4', 8' | 4', 8' + Continuous Runs | 2'-12' + Continuous Runs | 2'-12' + Continuous Runs |
| | Length Resolution | Fixed | Fixed | 4' Increments | 1" Increments | 1" Increments |
| | Installation Type | Ceiling, Wall | Ceiling | Ceiling | Ceiling, Wall, Perimeter | Ceiling, Wall, Perimeter |
| | Configuration Geometry | Straight | Straight | Straight | Straight, Corners, Intersection | Straight, Corners, Intersection |
| | Compatible Family Fixtures | Surface/Susp & Drywall Kits | N/A | N/A | Suspended, Surface, Wall | Suspended, Surface, Wall |
| | lm/W (Max) | 115 | 121 | 124 | 127 | 141 |
| | Lms/ft (Max) | 1,000 | 1,000 | 1,200 | 1,400 | 1,500 |
| | Standard Lumen Levels | 3 | 4 | 5 | 5 + Custom | 5 + Custom |
| | Lens | Flush Frosted | Flush Frosted, Asymmetric | Flush Frosted, Asymmetric | Flush & Drop Frosted, Asymmetric, Louver | Flush & Drop Frosted, Asymmetric, Louver |
| | Emergency | Integrated, Remote Switch | Integrated | Integrated | Integrated | Integrated |
| | CRI | 80+ | 80 Standard, 90 Optional | 80 Standard, 90 Optional | 80 Standard, 90 Optional | 80 Standard, 90 Optional |
| | Ceiling Integration / Flange Type | Standard T-Grid, Gypsum | Standard T-Grid, Gypsum | 6 Common Architectural Systems | >12 Architectural Ceiling Systems | >12 Architectural Ceiling Systems |
| | DLC | Standard | Standard | Standard | Standard & Premium | Standard & Premium |
| | VividTune™ | No | No | No | No | Tunable White |
| INTEGRATED CONTROLS | WaveLinx, Enlighted, DLVP, Stand Alone | Integrated or Tile Mount | Integrated | Integrated | Integrated or Tile Mount | Integrated or Tile Mount |
| | Integral Downlights | N/A | N/A | N/A | Optional Fixed or Adjustable | Optional Fixed or Adjustable |

Notes: 1. ★★★ = high applicability, ★★ = medium applicability, ★ = low applicability, blank = non-applicable

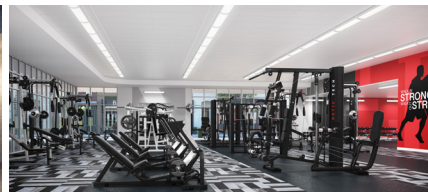
Fail-Safe

Fail-Safe is a leading provider of specialty grade lighting products designed to perform in a wide variety of complex environments.

Fail-Safe's complete family of luminaires are designed to meet the most demanding applications needs in medical / healthcare, vandal resistant, correctional, cleanroom, and specialty / custom lighting.

The product selection guides are simple yet powerful tools to help assist with product comparisons and selection based on features, performance and value.

- 14 **Cleanroom Spaces - LED**
- 15, 16 **Medical Spaces - LED**
- 17, 18 **Correctional Spaces - LED**
- 19 **Linear Vandal Resistant - LED**
- 20 **Indoor Vandal Resistant - LED**
- 21 **Vandal Resistant Wall Packs - LED**
- 22 **Vandal Resistant Vaportite - LED**
- 23 **Downlights - LED**
- 24 **Troffer - LED**
- 25 **Behavioral Health - LED**





Cleanroom Ratings

- ISO standard ratings (1-9) are used to identify products suitable for those cleanroom rated conditions.
- FED-STD-209E has been replaced by ISO 14644-1, but is still referenced in some specifications.
- For both systems, lower numbers correspond to stricter cleanroom ratings.



Hose Down Ratings

- IP 65 is low pressure hose down.
- IP 66 is high pressure hose down.
- First digit signifies dust ingress protection rating (1-6) and second digit represents liquid ingress protection (1-6 for hosedown). In both cases, the higher the number, the better the seal on the fixture.



NSF Ratings

- NSF (National Sanitation Foundation) provides certified product for use in commercial food processing applications.
- NSF rating can serve as a good indicator of the ability to easily clean/wipe down products.



Narrow Spectrum Illumination

- Red light is used in vivarium (enclosed structure for animal observation or research) applications.
- Green light is used in operating rooms.
- Amber and Yellow are used in various industrial processes.

Click on products to learn more



| | CFA | FLD4B | FLD6B | FSP | FCZ | ENW/ENC | FSN | CLM | CLP |
|---------------------|----------------|--------------|--------------|---------------|---------------|--------------------|------------------|--------------------|--------------------|
| Mounting | Surface | Recessed | Recessed | Recessed | Recessed | Recessed | Recessed | Recessed / Surface | Recessed / Surface |
| ISO Rating | 3 | | 5 | 5 | 5 | 5 | 5 | 5 | 5 |
| FED-STD-209E | 1 | | 100 | 100 | 100 | 100 | 100 | 100 | 100 |
| Max Lumens | 4,100 | 5,300 | 6,600 | 6,400 | 7,500 | 7,000 | 4,121 (4ft) | 24,000 | 24,000 |
| Sizes | 2', 3', 4', 8' | 4" Round | 6" Round | 1x4, 2x2, 2x4 | 1x4, 2x2, 2x4 | 1x2, 1x4, 2x2, 2x4 | Fixed 2', 4', 8' | 1x2, 1x4, 2x2, 2x4 | 1x2, 1x4, 2x2, 2x4 |
| UL Rating | Wet Location | Wet Location | Wet Location | Wet Location | Wet Location | Wet Location | Wet Location | Wet Location | Wet Location |
| IP Rating | | IP65/IP66 | IP65/IP66 | IP65/IP66 | IP65 | IP66 | IP66 | IP65 | IP66 |
| NSF | | Optional | Optional | Standard | Standard | Standard | Standard | Standard | Standard |
| Red | Optional | | | | | | | Optional | Optional |
| Green | Optional | | | | | | | Upon Request | Upon Request |
| Amber | Optional | | | | | | | Upon Request | Upon Request |
| Yellow | Upon Request | | | | | | | Upon Request | Upon Request |

Patient rooms



Multi-function vs multi-compartment

- Multi-function fixtures have a variety of functions and light outputs in a single fixture.
- Multi-compartment fixtures place each function in a distinctly separate compartment.

Multiple lights in one package

- Patient bed lights need to perform a variety of functions within a single fixture.
- Typical functions include ambient, exam, reading, nightlight, and chart light.

Mounting

- Patient bed lights can be ceiling mounted above or beside the bed, or to the headwall.

Operating rooms



Operating room layout

- Troffers typically used to form high lumen perimeter around operating table.
- Downlights typically used around perimeter of operating theater.

MIL-STD-461-G

- Rated to provide high level of protection against radiated and conducted electromagnetic interference (EMI).
- Protects certain sensitive equipment used in some operating rooms.

Green LEDs for auxiliary lighting

- Green LEDs used as auxiliary and supplemental lighting to primary white LEDs.
- If requested by the surgical staff, green LEDs are available for specification.

Click on products
to learn more



| | MAE | MNAE | MPBL |
|---------------------------|------------------------------|----------------------|---------------|
| Sizes | 2' x 2', 2' x 4' | 36", 48", 54", 60" | 24", 36", 48" |
| Mounting | Recessed ceiling (above bed) | Ceiling (beside bed) | Wall Mount |
| Max lumens | 18,000 | 6,100 | 12,650 |
| UL Location Rating | Damp | Damp (Wet optional) | Damp |
| Wipedown | Optional | Standard | Standard |
| Tamperproof | Optional | | |
| CRI | 80, 90 | 80, 90 | 80, 90 |

Click on products
to learn more



| | ORL | FLD6B/OR |
|---------------------------|---------------------------|----------------------|
| Sizes | 1' x 4', 2' x 2', 2' x 4' | 6" round |
| Mounting | Recessed troffer | Recessed downlight |
| Max lumens | 28,000 | 6,600 |
| UL Location Rating | Wet | Wet |
| IP Rating | IP66 | IP65 (IP66 optional) |
| Wipedown | Standard | Standard |
| NSF | Standard | Optional |
| CRI | 80, 90 | 80, 90, 97 |
| MIL-STD-461-G | Optional | Optional |
| Green LEDs | Optional | |

Behavioral health



Form and function

- Fixtures should have aesthetic appeal while maintaining high structural security.
- Continue visual themes from non-behavioral health areas.

Self harm resistant

- Designed to protect against self harm by patients.
- Polycarbonate lens and tamperproof hardware used to withstand high abuse.

Disease prevention and control

- Antimicrobial Matte White paint finish protects against disease propagation.

Exam rooms



High light levels and light quality

- High lumen levels needed for performing patient examinations.
- High CRI available for aid in visual evaluation of patient and symptoms.

Ease of cleaning

- Wipedown design and NSF (National Sanitation Foundation) rating make regular cleaning of fixtures easier.

Disease prevention and control

- Antimicrobial Matte White paint finish protects against disease propagation.

Click on products to learn more



| | FSP | FLD6BXV | FWL |
|--------------------|---------------------------|--------------------|---------------|
| Sizes | 1' x 4', 2' x 2', 2' x 4' | 6" round | 18", 24", 48" |
| Mounting | Recessed | Recessed downlight | Wall mount |
| Max lumens | 6,400 | 6,600 | 6,000 |
| UL Location Rating | Wet | Wet | Damp |
| IP Rating | IP65/IP66 | IP66 | |
| Wipedown | Standard | Standard | Standard |
| Tamperproof | Standard | Standard | Standard |
| NSF | Standard | | |
| CRI | 80 | 80, 90, 97 | 80, 90 |

Click on products to learn more



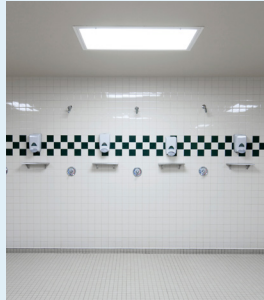
| | SGL | FCZ |
|--------------------|---------------------------|---------------------------|
| Sizes | 1' x 4', 2' x 2', 2' x 4' | 1' x 4', 2' x 2', 2' x 4' |
| Mounting | Recessed troffer | Recessed |
| Max lumens | 11,500 | 7,500 |
| UL Location Rating | Damp (Wet optional) | Wet |
| IP Rating | IP65 (optional) | IP65 |
| Wipedown | Standard | Standard |
| Tamperproof | Optional | Standard |
| NSF | Optional | Standard |
| CRI | 80, 90 | 80, 90 |

Unsupervised Areas

Cells



Showers



Work Spaces



- Inmates regularly present in these areas for long periods of time
- Guards only pass by periodically; not continuously present
- Fixtures typically mounted at lower heights and easy to reach
- Lens and metal thicknesses are thick to withstand regular, extended periods of potential high abuse

Supervised Areas

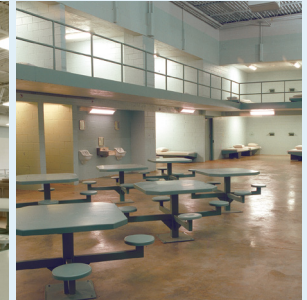
Hallways



Cafeterias

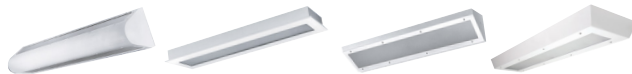


Visiting Spaces



- Inmates occasionally present in these areas
- Guards regularly present, able to respond quickly to inmates attempting to damage fixtures
- Fixture mounting heights low, medium, or high depending on space/application
- Lens and metal thicknesses withstand intermittent, moderate abuse

Click on products to learn more



| | | FMB | FMR | FCC | FUSL |
|---------------|---------------------------|----------------|-------------------------|----------------|----------------|
| Applicability | Cells | ★★★ | ★★★ | ★★★ | ★★★ |
| | Showers | | ★★★ | ★★★ | ★★ |
| | Work Spaces | ★★ | ★★★ | ★★ | ★★★ |
| Features | Mounting | Wall | Recessed | Corner | Surface |
| | Size | 2', 4' | 1x1, 1x2, 1x4, 2x2, 2x4 | 2', 4' | 2', 4' |
| | Max Lumens | 5,264 / 5,264* | 9,960* | 7,178* | 11,832* |
| | Wet Location | N/A | Optional | Optional | Optional |
| | Max Metal Ga. / Thickness | 12 ga / 0.109" | 12 ga / 0.109" | 12 ga / 0.109" | 12 ga / 0.109" |
| | Max Total Lens Thickness | .750" | .875" | .875" | .687" |

Notes: 1. ★★★ = high applicability, ★★ = medium applicability, ★ = low applicability, blank = non-applicable

*Max Lumens with 0.250" Polycarbonate Lens

**Nominal Lens Thickness

Click on products to learn more

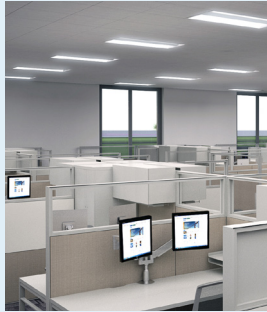


| | | FCT | FMS | TR15 |
|---------------|---------------------------|----------------|-------------------------|-----------|
| Applicability | Hallways | ★★★ | ★★★ | ★★ |
| | Cafeterias | ★★ | ★★★ | ★★ |
| | Visiting Spaces | ★★★ | ★★★ | ★★★ |
| Features | Mounting | Surface | Surface | Wall |
| | Size | 2', 4' | 1x1, 1x2, 1x4, 2x2, 2x4 | 15" Round |
| | Max Lumens* | 16,700 | 15,300 | 4,875 |
| | Wet Location | N/A | Optional | Standard |
| | Max Metal Ga. / Thickness | 12 ga / 0.109" | 12 ga / 0.109" | N/A |
| | Max Total Lens Thickness | .500" | .860" | 0.135" |

Notes: 1. ★★★ = high applicability, ★★ = medium applicability, ★ = low applicability, blank = non-applicable

Non-Correctional Areas

Offices



Entrances

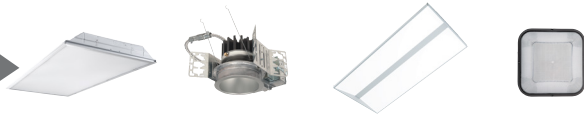


Waiting Areas



- Inmates never/rarely present
- Guards rarely present
- Improved aesthetic appearance desired
- Lenses can be polycarbonate or acrylic

Click on products to learn more



| | | GRV | FLD6B | ENV | G12 |
|---------------|--------------------------|---------------|----------|--------------------|------------|
| Applicability | Offices | ★★★ | ★★★ | ★★★ | ★ |
| | Entrances | ★★★ | ★★★ | ★★★ | ★★★ |
| | Waiting Areas | ★★★ | ★★★ | ★★★ | ★ |
| Features | Mounting | Recessed | Recessed | Recessed | Wall |
| | Size | 1x4, 2x2, 2x4 | 6" Round | 1x2, 1x4, 2x2, 2x4 | 12" Square |
| | Max Lumens | 18,000 | 7,000 | 6,489* | 3,750 |
| | Wet Location | N/A | Standard | Standard | Standard |
| | Max Total Lens Thickness | 0.187" | 0.375" | 0.250" | 0.135*** |

Notes: 1. ★★★ = high applicability, ★★ = medium applicability, ★ = low applicability, blank = non-applicable

*Max Lumens with 0.250" Polycarbonate Lens

**Nominal Lens Thickness

| Security Level | Super Max | Max | Medium | Minimum | High Abuse | Non-Correctional |
|----------------|--|--|--|--|------------------------------|-------------------|
| Metal Material | Steel / Stainless | Steel / Stainless | Steel / Stainless | Steel / Stainless | Steel / Stainless / Aluminum | Steel / Aluminum |
| Door Gauge | 12 ga | 14 ga | 16 ga | 18 ga | 20 ga | N/A |
| Housing Gauge | 14 ga | 14 ga | 16 ga | 16 ga | 20 ga | N/A |
| Lens | 0.375" Polycarbonate or Tempered Glass | 0.250" Polycarbonate or Tempered Glass | 0.187" Polycarbonate or Tempered Glass | 0.156" Polycarbonate or Tempered Glass | 0.125" Polycarbonate | 0.125" DR Acrylic |
| Areas | <div> <div>Unsupervised Areas</div> <div>Supervised Areas</div> <div>Non-Correctional Areas</div> </div> | | | | | |
| | | | | | | |
| | | | | | | |

Control Systems

| | | TCS Touch Control System | SPS Security Push System | Commercial Switch / Dimmer |
|-----------------|--|--|---|---|
| Control Systems | | <ul style="list-style-type: none"> • High security capacitive touch bolt • Remote override capacity • Integral to fixture or remote in wall | <ul style="list-style-type: none"> • Security push switch, integral to fixture • Local single fixture/circuit control | <ul style="list-style-type: none"> • Non-tamper resistant • Offers on/off and dimming |
| | | <div>TCS Touch Control System</div> | <div>SPS Security Push System</div> | <div>Commercial Switch Dimmer</div> |
| | | | | |

Linear Vandal Resistant LED

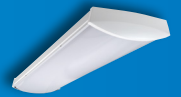
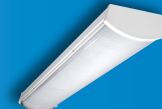
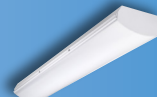
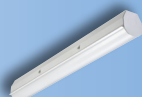
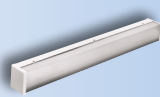
Fail-Safe

Good

Better

Best

Click on products
to learn more



| | | FVS4 | FVS8 | HVSL2 | HVSL4 | HVSL8 | HVSL12 | HVL8 | HVL12 |
|----------------------------|-----------------------------------|----------------|----------------|----------------|--------------------|-------------|--------------|----------------|----------------|
| APPLICABILITY ¹ | Behavioral Health | ★ | ★ | ★★ | ★★ | ★★★ | ★★ | ★★ | ★★ |
| | Outdoor Vandal Resistant | ★★ | ★★ | ★★ | ★★ | ★★ | ★★ | ★★ | ★★ |
| | Indoor Vandal Resistant | ★★★ | ★★★ | ★★★ | ★★★ | ★★★ | ★★★ | ★★★ | ★★★ |
| | Industrial High Abuse | ★★★ | ★★★ | ★★★ | ★★★ | ★★★ | ★★★ | ★★★ | ★★★ |
| | Multifamily homes | ★★ | ★★ | ★★★ | ★★★ | ★★★ | ★★★ | ★★ | ★★ |
| MOUNTING | Wall | ✓ | ✓ | ✓ | ✓ | ✓ | ✓ | ✓ | ✓ |
| | Ceiling | ✓ | ✓ | ✓ | ✓ | ✓ | ✓ | ✓ | ✓ |
| | Pendant | | | ✓ | ✓ | | | ✓ | ✓ |
| FEATURES | Lengths | 2', 3', 4', 8' | 2', 3', 4', 8' | 2', 3', 4', 8' | 1', 2', 3', 4', 8' | 2', 4', 8' | 2', 4', 8' | 1', 2', 4', 8' | 1', 2', 4', 8' |
| | Size (W x H) | 4" x 3.75" | 8" x 3.75" | 2.5" x 2.75" | 4" x 3.3" | 8.5" x 3.6" | 12.5" x 3.6" | 8.6" x 3.6" | 12.6" x 3.6" |
| | Maximum Lumen Output (4ft Length) | 8664 | 13841 | 4083 | 7883 | 13444 | 12942 | 12690 | 12350 |
| | Lens Thickness | 0.125", 0.187" | 0.125", 0.187" | 0.085" | 0.085" | 0.135" | 0.135" | 0.135" | 0.135" |
| | Emergency | Optional | Optional | Optional | Optional | Optional | Optional | Optional | Optional |
| | Occupancy | Optional | Optional | Optional | Optional | Optional | Optional | Optional | Optional |
| | Photocell | N/A | N/A | N/A | N/A | N/A | N/A | N/A | N/A |
| CERTIFICATIONS | IP | N/A | N/A | N/A | N/A | IP63 | IP63 | IP64 | IP64 |
| | Wet Location | Optional | Optional | Optional | Optional | Optional | Optional | Standard | Standard |
| | NSF | N/A | N/A | N/A | Optional | N/A | N/A | Optional | Optional |

Notes: 1. ★★★ = high applicability, ★★ = medium applicability, ★ = low applicability, blank = non-applicable

Indoor Vandal Resistant LED

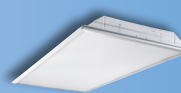
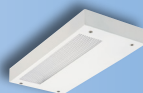
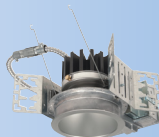
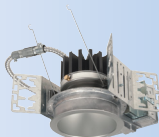
Fail-Safe

Good

Better

Best

Click on products
to learn more



| | | FLD4B | FLD6B | UCLV | GRV | FSP | FCZ | ENV | FSN | SGI |
|----------------------------|-------------------------|----------|----------|----------------|---------------|---------------|---------------|--------------------|--------------------------------|---------------|
| APPLICABILITY ¹ | Behavioral Health | ★★★ | ★★★★ | ★★ | ★★ | ★★★★ | ★★★★ | ★★★★ | ★★★★ | ★★★★ |
| | Indoor Vandal Resistant | ★★★★ | ★★★★ | ★★★★ | ★★★★ | ★★★★ | ★★★★ | ★★★★ | ★★★★ | ★★★★ |
| | Indoor High Abuse | ★★★★ | ★★★★ | ★ | ★★★★ | ★★★★ | ★★★★ | ★ | ★★★★ | ★ |
| | Multifamily homes | ★★★★ | ★★★★ | ★ | ★★ | ★★ | ★★ | ★★ | ★ | ★★ |
| FEATURES | Size | 4" Round | 6" Round | 1', 2', 3', 4' | 1x4, 2x2, 2x4 | 1x4, 2x2, 2x4 | 1x4, 2x2, 2x4 | 1x2, 1x4, 2x2, 2x4 | Fixed 2', 4', 8' | 1x4, 2x2, 2x4 |
| | Mounting | Recessed | Recessed | Undercabinet | Recessed | Recessed | Recessed | Recessed | Recessed or Surface/Suspension | Recessed |
| | Maximum Lumen Output | 4,000 | 7,000 | 2,400 | 17,000 | 6,400 | 7,500 | 6,200 | 4,121 (4ft) | 11,500 |
| | Maximum Lens Thickness | 0.187" | 0.500" | 0.187" | 0.187" | 0.375" | 0.250" | 0.375" | 0.250" | 0.375" |
| | Emergency | Optional | Optional | N/A | Optional | Optional | Optional | Optional | Optional | Optional |
| | Occupancy | N/A | N/A | Optional | N/A | N/A | N/A | N/A | N/A | N/A |
| CERTIFICATIONS | IP | IP66 | IP66 | IP63 | N/A | IP65/IP66 | IP65 | IP66 | IP66 | IP65 |
| | Wet Location | Standard | Standard | N/A | N/A | Standard | Standard | Standard | Standard | Optional |
| | NSF | Standard | Standard | N/A | N/A | Standard | Standard | Standard | Standard | Optional |

Notes: 1. ★★★ = high applicability, ★★ = medium applicability, ★ = low applicability, blank = non-applicable

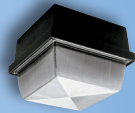


Vandal Resistant Wall Packs

LED

Fail-Safe

Whether lighting hallways, stairwells, prisons, or shopping plazas in a variety of high abuse applications, **Fail-Safe's** wall pack vandal resistant LED products offer a complete family of innovative, affordable, and energy saving LED solutions for your next project.



| | | Good | | Better | | Best | | |
|----------------------------|--------------------------|---|--|---|---|---|-----------|---|
| | |  | |  |  |  | |  |
| | | B95 | | H12 | G12 | TR11 | TR15 | FW |
| APPLICABILITY ¹ | Behavioral Health | ★★ | | ★★ | ★★ | ★★★ | | ★★★ |
| | Outdoor Vandal Resistant | ★★★ | | ★★★ | ★★★ | ★★★ | | ★★★ |
| | Indoor Vandal Resistant | ★★ | | ★★ | ★★ | ★★★ | | ★★ |
| | Industrial High Abuse | ★★★ | | ★★★ | ★★★ | ★★★ | | ★★★ |
| | Multifamily homes | ★★ | | ★★ | ★★ | ★★★ | | ★★★ |
| MOUNTING | Wall | ✓ | | ✓ | ✓ | ✓ | | ✓ |
| | Ceiling | ✓ | | ✓ | ✓ | ✓ | | N/A |
| FEATURES | Size | 5" x 9" Rectangle | | 12" x 12" Square | 12" x 12" Square | 11" Round | 15" Round | 6" x 12", 12" x 6", 9" x 9", 12" x 12" |
| | Maximum Lumen Output | 1,975 | | 4,703 | 3,750 | 2,630 | 4,875 | 2,500 |
| | Lens Thickness | 0.130" | | 0.156" | 0.130" | 0.125" | | 0.125" |
| | Emergency | N/A | | Optional | Optional | Optional | | Optional |
| | Occupancy | N/A | | Optional | Optional | Optional | | Optional |
| | Photocell | Optional | | Optional | Optional | Optional | | N/A |
| CERTIFICATIONS | IP | IP65 | | IP65 | IP65 | IP65 | | IP65 |
| | Wet Location | Standard | | Standard | Standard | Standard | | Standard |

Notes: 1. ★★★ = high applicability, ★★ = medium applicability, ★ = low applicability, blank = non-applicable

Vandal Resistant Vaportite LED

Fail-Safe

Good

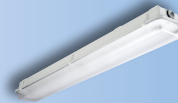
Better

Best

Fail-Safe's Vandal Resistant Vaportite fixtures deliver reliability and robust construction for complex environments, able to withstand high levels of abuse.



Click on products to learn more



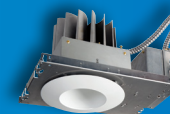
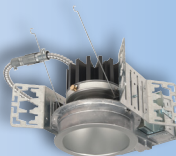
| APPLICABILITY ¹ | | VRVT2 | VRVT3 | VRVT4S | VRVT4 |
|----------------------------|----------------------------------|------------------------|------------------------|------------------------|------------------------|
| | Canopy | ★★ | ★★ | | |
| | Parking Garage | ★★ | ★★★ | | |
| | Warehouse | ★★★ | ★★★ | ★ | ★ |
| | Food Processing | ★★ | ★★★ | ★★ | ★★ |
| | Manufacturing | ★★ | ★★ | ★★★ | ★★★ |
| | Complex Environments | ★ | ★★★ | ★★★ | ★★★ |
| | Natatorium | ★★ | ★★★ | ★★★ | ★★★ |
| | Vivarium | ★★★ | ★★★ | ★★★ | ★★★ |
| FEATURES / PERFORMANCE | Lumen Range | 2,000 - 22,000 | 2,000 - 8,000 | 9,000 - 18,000 | 9,000 - 30,000 |
| | Efficacy (Max) | 150 lm/W | 154 lm/W | 165 lm/W | 146 lm/W |
| | Distribution ² | G, W | G, W, P | G | G |
| | Sizes | 2', 4', 8' | 2', 4' | 2' | 4' |
| | Housing | Fiberglass/Polyester | Fiberglass/Polyester | Fiberglass | Fiberglass |
| | Lensing | DR Acrylic or Polycarb | DR Acrylic or Polycarb | DR Acrylic or Polycarb | DR Acrylic or Polycarb |
| | Wet Location | Yes | Yes | Yes | Yes |
| | IP Rating | IP65 | IP65, 66, 67 | IP65, 66, 67, 69 | IP65, 67 |
| | NSF | Yes | Yes | Yes | Yes |
| | NEMA 4X | None | None | Yes | Yes |
| | Life (@60K hrs) | L91 | L91 | L91 | L92 |
| | Ambient Range | -40C to 35C | -40C to 50C | -40C to 40C | -40C to 40C |
| | Emergency | Yes | Yes | Yes | Yes |
| | Vandal Resistant | Optional | Optional | Optional | Optional |
| | Tamperproof | Standard | Standard | Standard | Standard |
| | Narrow Spectrum Color LED | Red, Amber, Green | Red, Amber, Green | Red, Amber, Green | Red, Amber, Green |
| INTEGRATED CONTROLS | Basic Occupancy | ✓ | ✓ | ✓ | ✓ |
| | Stand Alone Daylight / Occupancy | ✓ | ✓ | ✓ | ✓ |
| | WaveLinx | | | | |

Notes: 1. ★★★ = high applicability, ★★ = medium applicability, ★ = low applicability, blank = non-applicable
2. G=General, W=Wide, P=Parking Garage.

Fail-Safe offers an assortment of downlights intended for a variety of customer applications. Whether it's high abuse environments, medical spaces, or even MRI suites, **Fail-Safe's** downlight fixtures meet the most stringent requirements and still deliver the aesthetic appeal desired by customers.



Click on products to learn more



| | | FLD4B Open Medical 4" | FLD4BX Enclosed 4" | FLD6B Open Medical 6" | FLD6BX Enclosed 6" | FLD6BX / OR Operating Room | MRI-R6DNLT MRI Downlight |
|----------------------------|--------------------------------------|--------------------------|-----------------------|--------------------------|-----------------------|-------------------------------|-----------------------------|
| APPLICABILITY ¹ | Vandal Resistant / Behavioral Health | ★ | ★★★ | ★ | ★★★ | | |
| | Correctional | | ★ | | ★★ | | |
| | Food Processing | ★★★ | ★★★ | ★★★ | ★★★ | ★ | |
| | Cleanroom | | | ★★★ | ★★★ | ★★ | |
| | Medical (non-OR) | ★★★ | ★★★ | ★★★ | ★★★ | ★ | |
| | Operating Room | ★ | ★★ | ★ | ★★ | ★★★ | |
| | MRI | | | | | | ★★★ |
| CONFIGURATIONS | Open | ✓ | ✓ | ✓ | ✓ | | ✓ |
| | Bottom Lens | | ✓ | | ✓ | | |
| | Bottom Trim Ring | | | | ✓ | ✓ | |
| FEATURES | Size | 4" | 4" | 6" | 6" | 6" | 6" |
| | Max Lumens | 5,000 | 5,000 | 7,000 | 7,000 | 5,000 | 1,800 |
| | Tamperproof | — | Optional | — | Optional | — | — |
| | VividTune | Available | Available | Available | Available | — | — |
| | Dim to Warm | Available | Available | Available | Available | Available | — |
| | Non-Ferrous | — | — | — | — | — | Standard |
| | Remote Driver | — | — | — | — | — | Standard |
| CERTIFICATIONS | UL | Wet | Wet | Wet | Wet | Wet | Damp |
| | IP | IP65 | IP65/IP66 | IP65 | IP65/IP66 | IP66 | — |
| | NSF | Available | Available | Available | Available | Available | — |
| | MIL-STD-461-G | — | — | — | — | Available | — |
| | ISO Cleanroom ² | 5 | 5 | 5 | 5 | 5 | — |

Notes: 1. ★★★ = high applicability, ★★ = medium applicability, ★ = low applicability, blank = non-applicable. 2. Fixtures rated ISO 5 are compatible with cleanrooms rated ISO 5 or higher.

Good

Better

Best

Click on products
to learn more


| | | GRW | GRV | FSP | FCB | FCZ | ENW/ENC | ENV | CLM | CLP | FSN | SGI |
|----------------------------|----------------------------|---------------------------|---------------------------|---------------------------|---------------------------|---------------------------|----------------------------------|---------------------------|---------------------------|---------------------------|------------------|---------------------------|
| APPLICABILITY ¹ | Vandal Resistant | ★ | ★★★★ | ★★ | ★★ | ★★★★ | ★ | ★★★★ | ★ | ★ | ★★★★ | ★★★★ |
| | High Abuse | ★ | ★★★★ | ★★★★ | ★★ | ★★★★ | ★★ | ★★★★ | ★★ | ★ | ★★★★ | ★★★★ |
| | Healthcare | ★ | ★ | ★★★★ | ★★★★ | ★★★★ | ★★★★ | ★★ | ★ | ★ | ★★★★ | ★★★★ |
| | Behavioral Health | ★ | ★★★★ | ★★ | ★★ | ★★★★ | ★ | ★★★★ | ★ | ★ | ★★★★ | ★★★★ |
| | Cleanroom | ★ | | ★★★★ | | ★★ | ★★★★ | ★★ | ★★★★ | ★★★★ | ★★ | ★ |
| | Pharmaceuticals | ★★ | | ★★★★ | ★ | ★★ | ★★★★ | ★★ | ★★★★ | ★★★★ | ★★ | ★★ |
| | Vivariums | | | | | ★ | | | ★★★★ | ★★★★ | | ★★ |
| | Hosedown | ★★ | | ★★★★ | ★ | ★★ | ★★★★ | ★★★★ | ★★★★ | ★★★★ | ★★★★ | ★★★★ |
| | Food Prep | | | ★★★★ | | ★★★★ | ★★★★ | ★★ | ★★★★ | ★★★★ | ★★★★ | ★★★★ |
| FEATURES | Size | 1' x 4', 2' x 2', 2' x 4' | 1' x 4', 2' x 2', 2' x 4' | 1' x 4', 2' x 2', 2' x 4' | 1' x 4', 2' x 2', 2' x 4' | 1' x 4', 2' x 2', 2' x 4' | 1' x 4', 2' x 2', 2' x 4' | 1' x 4', 2' x 2', 2' x 4' | 1' x 4', 2' x 2', 2' x 4' | 1' x 4', 2' x 2', 2' x 4' | Fixed 2', 4', 8' | 1' x 4', 2' x 2', 2' x 4' |
| | Mounting | Grid | Grid | Grid | Grid | Grid | Grid | Grid | Grid | Grid/Flange/Surface | Surface | Grid |
| | Max Lumens | 18,000 | 18,000 | 6,400 | 7,500 | 7,500 | 7,000 | 7,000 | 24,000 | 24,000 | 4,121 (4ft) | 11,500 |
| | Service from Below | ✓ | ✓ | | ✓ | | | | ✓ | ✓ | | ✓ |
| RATINGS | Wet Location | Standard | Standard | Standard | Optional | Standard | Optional (ENW) Standard (ENC) | Standard | Standard | Standard | Standard | Standard |
| | IP | — | — | IP66 Optional | — | IP65 Optional | IP66 | IP66 | IP65 | IP66 | IP66 | IP65 Available |
| | NSF | — | — | Standard | — | Standard | Standard | Standard | Standard | Standard | Standard | Available |
| | ISO Cleanroom ² | — | — | 5 | — | 5 | 5 | 5 | 5 | 5 | 5 | — |

Notes: 1. ★★★★★ = high applicability, ★★★★★ = medium applicability, ★ = low applicability, blank = non-applicable

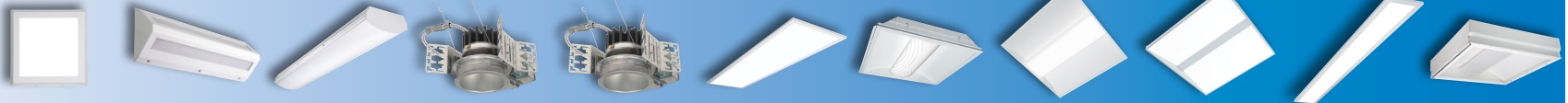
2. Fixtures rated ISO 5 are compatible with cleanrooms rated ISO 5 or higher.

Good

Better

Best

Click on products to learn more



| | | FW | FWL | HVSL8B | FLD4B | FLD6B | FSP | FCB | FCZ | ENV | FSN | SGI |
|----------------------------|----------------------|---|--------------|--------------|------------------|------------------|------------------------------|------------------------------|------------------------------|---------------------------------------|------------------|------------------------------|
| APPLICABILITY ¹ | Patient Rooms | ★★ | ★★★★ | ★★★★ | ★★★★ | ★★★★ | ★★★★ | ★ | ★★★★ | ★★★★ | ★★★★ | ★★★★ |
| | Hallways | ★★ | ★★ | ★★★★ | ★★ | ★★ | ★★ | ★★★★ | ★★★★ | ★★★★ | ★★★★ | ★★★★ |
| | Common Spaces | ★★★★ | ★ | ★★★★ | ★★★★ | ★★★★ | ★★★★ | ★★★★ | ★★★★ | ★★★★ | ★★★★ | ★★★★ |
| | Dining Areas | ★★★★ | ★ | ★★★★ | ★★ | ★★ | ★★★★ | ★★★★ | ★★ | ★★★★ | ★★★★ | ★★ |
| | Medical Offices | ★★★★ | ★★ | ★★ | ★★★★ | ★★★★ | ★★★★ | ★★★★ | ★★★★ | ★★★★ | ★★★★ | ★★ |
| FEATURES / CERTIFICATIONS | Mounting | Wall/Ceiling | Wall | Wall/Ceiling | Recessed Ceiling | Recessed Ceiling | Recessed Ceiling | Recessed Ceiling | Recessed Ceiling | Recessed Ceiling | Recessed Ceiling | Recessed Ceiling |
| | Sizes | 6" x 12", 12" x 6", 9" x 9", 12" x 12" | 1.5', 2', 4' | 2', 4', 8' | 4" | 6" | 1' x 4', 2' x 2', 2' x 4' | 1' x 4', 2' x 2', 2' x 4' | 1' x 4', 2' x 2', 2' x 4' | 1' x 2', 1' x 4', 2' x 2', 2' x 4' | Fixed 2', 4', 8' | 1' x 4', 2' x 2', 2' x 4' |
| | Maximum Lumen Output | 2,500 | 6,000 | 13,400 | 4,000 | 7,000 | 6,400 | 6,500 | 7,500 | 6,100 | 4,121 (4ft) | 11,500 |
| | Ligature Resistant | ✓ | ✓ | ✓ | ✓ | ✓ | ✓ | | ✓ | ✓ | ✓ | ✓ |
| | Tamperproof Screws | Standard | Optional | Optional | Optional | Optional | no screws | Optional | no screws | no screws | no screws | Optional |
| | IP | IP65 | N/A | IP63 | IP66 | IP66 | IP65/IP66 | N/A | IP65 | IP66 | IP66 | IP65 |
| | Wet Location | Standard | N/A | Standard | Standard | Standard | Standard | Optional | Standard | Standard | Standard | Standard |
| | NSF | N/A | N/A | N/A | N/A | Optional | Standard | N/A | Standard | Standard | Standard | Available |

Notes: 1. ★★★★★ = high applicability, ★★★★ = medium applicability, ★ = low applicability, blank = non-applicable

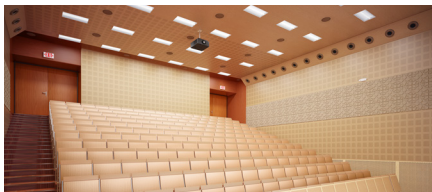
Sure-Lites

Sure-Lites has been the trusted name and industry leader for emergency and exit lighting for over 30 years. Sure-Lites offers a full line of innovative emergency and exit lighting products designed for commercial, industrial, hospitality, educational and multi-housing residential spaces.

Sure-Lites products are designed to meet and exceed today's building codes. Our products offer maximum reliability and performance while minimizing installation and maintenance costs. From ease of installation to performance-enhancing electronics to time-saving features, Sure-Lites is focused on advancing technology to develop the most effective emergency and exit lighting solutions.

The product selection guides are simple yet powerful tools to help assist with product comparisons and selection based on features, performance and value.

- 27 **Emergency LED**
- 28 **Exit LED**
- 29 **Remote LED**



Good

Better

Best



| | | SELWT29SD SELW29SD | | SEL50R7SD/ SEL25R10SD/ SEL60R4SD | SEL60R10SD/ SEL50R14SD/ SEL25R16SD | SELM60R10SD/ SELM50R14SD/ SELM25R16SD | | | | | AEL2SD | | |
|-------------------|---|---|---|---|---|--|---|---|---|---|---|---|---|
| | | SELW25 | SEL50 SEL25 SEL17 | SEL60R4 | | SELM60R4SD | SELMREC | SELA | SELDWA | SELMTG | AEL2 | SELIN | SELDSD |
| | APEL | | | | | | | | | | | | |
| |  |  |  |  |  |  |  |  |  |  |  |  |  |
| Series | APEL | SELW | SEL | SEL | SEL | SELM | SELMREC | SELA | SELDWA | SELMTG | AEL2 | SELIN60SD | SELD |
| Material | Polycarbonate | Polycarbonate | Polycarbonate | Polycarbonate | Polycarbonate | Sheet Metal | Sheet Metal | Polycarbonate | Die cast AL | Sheet metal | Die Cast AL | Fiberglass | Die Cast AL |
| Source | LED | LED | LED | LED | LED | LED | LED | LED | LED | LED | LED | LED | LED |
| Coverage | 15 feet | 25 or 29 feet | 17/25/50 feet | 25/50/60 feet | 25/50/60 feet | 25 feet or 60 feet | 25, 50 or 60 feet | 29 feet | 29 or 50 feet | 60 feet | 25 feet | 25, 50 or 60 feet | 60 feet |
| Battery | Nickel cadmium | Nickel cadmium | Nickel cadmium | Nickel cadmium | Nickel cadmium | Nickel cadmium | Nickel cadmium | Nickel cadmium | Nickel cadmium | Nickel cadmium | Nickel cadmium | Nickel cadmium | Nickel cadmium |
| Remote Capability | No | NA | No | 4 to 10 watts | 10 to 16 watts | 4 to 16 watts | 4 to 10 watts | No | NA | 5 watts | No | Yes | Yes |
| Color | White | Ag/BK/WH/BZ | White or Black | White or Black | White or Black | White | White or Black | White or Black | Ag/BK/WH/BZ | White or Black | Ag/BK/WH/BZ | Grey | Ag/BK/Wh |
| Temp Range | 10° C to 40° C | 0° C to 40° C / -20° C to 55° C | 0° C to 40° C | 0° C to 40° C | 0° C to 40° C | 0° C to 40° C | 0° C to 40° C | 0° C to 40° C | 0° C to 40° C | 0° C to 40° C | -30° C to 55° C | 0° C to 40° C | -30° C to 50° C |
| Self Diagnostics | No | Option | Option | Option | Standard | Standard | Standard | Standard | Standard | Standard | Option | Standard | Standard |
| UL Rating | Damp location | Wet Location | Damp location | Damp location | Damp location | Damp location | Damp location | Damp location | Wet location | Damp location | Wet Location | NEMA4x | NEMA 4X / HAZ option |
| Always On | No | No | No | No | No | No | No | No | No | No | Yes | No | No |
| Availability | Stock | Stock | Stock | Stock | Stock | Stock | Stock | Stock | Stock | Q2 2019 | Stock | Stock | Stock |

Click on products
to learn more

Good

Better

Best

DISTRIBUTION



COMMERCIAL



INDUSTRIAL



SPECIFICATION

Click on products
to learn more

| | APX | APC | LPXSD LPX | CXSD | LPXC | EUS EUR | LPXW Outdoor | EUXSD EUX | ACE | ELX/ES | UX HAZ UX |
|------------------|---------------|---------------|---------------|----------------------------|---------------|---------------|----------------------------|----------------------------|----------------------------|-----------------------|----------------------------|
| Series | APX | APC/APCH | LPX | CX | LPXC | EU | LPXW | EUX | ACE | ES / ELX | UX |
| Type | Box | Combo | Box | Box | Combo | Edge Lit | Box | Edge Lit | Circular | Edge Lit | Box |
| Material | Polycarbonate | Polycarbonate | Polycarbonate | Die Cast | Polycarbonate | Aluminum | Polycarbonate | Aluminum | Aluminum | Aluminum | Die Cast AL |
| Mounting | Universal | | Universal | Universal | Universal | Sur / Rec | Universal | Universal | Universal | Sur / Rec | Universal |
| Faces | Universal | Universal | Universal | Universal | Universal | Universal | One or Two | Universal | Universal | One or Two | One or Two |
| Letter Color | Red or Green | Red or Green | Red & Green | Red & Green | Red & Green | Red or Green | Red or Green | Red or Green | Red & Green | Red or Green | Red & Green |
| Housing Color | White, Black | White, Black | White, Black | Silver, Black, White | White, Black | Silver | Silver, Black, White | Silver, Black, White | Silver, Black, White | Wh, BK, BZ, BR, AL | Silver, Black, White |
| Self Diagnostics | N/A | N/A | Option | Option | Option | N/A | Standard | Option | Standard | Option ELX | Standard |
| Remote Capacity | Option | Yes | Option | No | Option | No | No | No | No | No | No |
| UL Rating | Damp location | Damp location | Damp location | Damp location | Damp location | Damp location | Wet location | Damp location | Damp location | Damp location | NEMA4X/HAZ |
| Availability | Stock | Stock | Stock | Stock | Stock | Stock | Stock | Stock | Stock | MTO | Stock |

Good

Better

Best

DISTRIBUTION



COMMERCIAL



INDUSTRIAL



SPECIFICATION



Click on products
to learn more

APWR



SRP



SRM



SRPA



Series

APWR

SRP

SRM

SRPA

Material

Plastic

Polycarbonate

Sheet Metal

Polycarbonate

Source

LED

LED

LED

LED

Number of heads

1 or 2

1 or 2

1 or 2

2

Adjustable

Yes

Yes

Yes

Yes, with forward throw

Coverage

15 feet

13 to 60 feet

13 to 60 feet

29 feet

Voltage input

3.6 volts

4.8 through 12 volts

4.8 through 12 volts

4.8 through 6 volt

Color

White, Black

White, Black, Grey

White, Black, Grey

White, Black, Silver, Grey

Temp Range

0° C to 40° C

-30° C to 60° C

-30° C to 60° C

-30° C to 55° C

UL Rating

Wet location

Wet Location

Wet Location

Wet Location

Availability

Stock

Stock

Stock

Stock

Lighting controls

Make your workspace work for you. Cooper Lighting Solution's connected lighting systems take the guesswork out of managing your facility, seamlessly adapting to patterns and preferences. With solutions that let you easily manage comfort, productivity and energy savings, it pays to be connected.

Lighting the spaces where we congregate - whether for work, for entertainment, education or services - is fundamental to our experience and performance. Maximizing those interactions requires specific design, cost and efficiency considerations.

31, 32



The product selection guides are simple yet powerful tools to help assist with product comparisons and selection based on features, performance and value.



| Click on Connected product to learn more | | WaveLinx Wireless | WaveLinx Wired |
|--|----------------------------|-------------------|----------------|
| EQUIPMENT | Wired Switches | ● | ● |
| | Battery Switches | ● | |
| | Wired Sensors | ● | ● |
| | Battery Sensors | ● | |
| | Wireless fixtures | ● | |
| | Sensor integrated fixtures | ● | |
| | Switchpacks | ● | ● |
| | Receptacle Control | ● | ● |
| | Integration | ● | ● |
| INSTALLATION | Traditional wiring | ● | ● |
| | Modular Wiring System | ● | ● |
| | Wireless communications | ● | |
| | Two wire communications | ● | ● |
| SOFTWARE | AV integration | ● | ● |
| | BACnet | ● | ● |
| | OpenADR | ● | ● |
| | Mobile App | ● | ● |
| | Floorplan | ● | |
| | Alarms & Events | ● | |
| | Energy Dashboard | ● | |
| | API Integration | ● | |
| APPLICATIONS | Office/ Private/ Open | ● | ● |
| | Education/ Classroom | ● | ● |
| | Industrial/ Warehouse | ● | ● |
| | Outdoor Parking Lot | ● | ● |
| | Outdoor Area Site | ● | ● |
| | Outdoor Parking Garage | | ● |
| CODE | ASHRAE 90.1 2016 | ● | ● |
| | IECC 2018 | ● | ● |
| | T24 2018 | ● | ● |

Why use Controls?



Rising conduit and wire costs

Conduit and copper has seen continued cost increase, as much as 22% over the past 12 months.

- Eliminate up to 60% of the wire runs
- Less wire - Less pipe



Shortage of qualified labor

80% of electrical contracting firms are reporting difficulty filling hourly craft worker positions and higher salaries.

- Save up to 45 minutes per control zone
- Less time - Less people



Installation times

Get off the job at least 40% faster simple install and simple setup.

- More jobs with the same people means more money for you
- Faster install



Energy savings

How do you make sure you meet local code and provide energy savings to your customer?

- Network Lighting Controls (NLCs) provide 47-70% savings with integrated luminaire lighting controls
- Up to 70% energy savings



Training

How do you keep up with the latest technology? Cooper Lighting Solutions provides local and classroom certification programs

- Learn how the system works in as little as 2 hours
- Simply mobile



Instructional videos

What if I need a tutorial on site? WaveLinx has fifteen, 5 minute videos that walk you through it.

- Free mobile app
- Free training videos



Utility incentives

Many states provide rebate incentives for LED fixtures with integrated sensors.

- Less material to install, and the rebate pays for it
- Incentives up to \$75 per fixture



Cybersecurity

Are you concerned with cybersecurity? Good, but know that WaveLinx has the UL2900-1 listing for Network Cybersecurity.

- Help customers stay secure
- Peace of mind that the product is backed by UL for cybersecurity

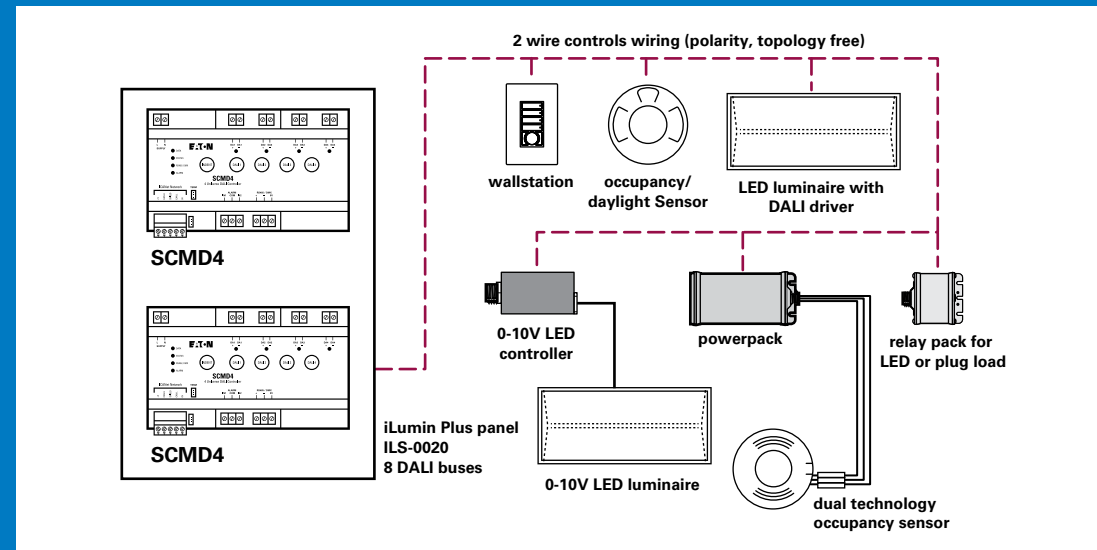


Wired or Wireless, code-compliant and cost-effective for today's
Electrician

Wired

Your wired solution to control complete building lighting via area (relay), zone (0-10v) or fixture (2-wire or DMX) all from one system.

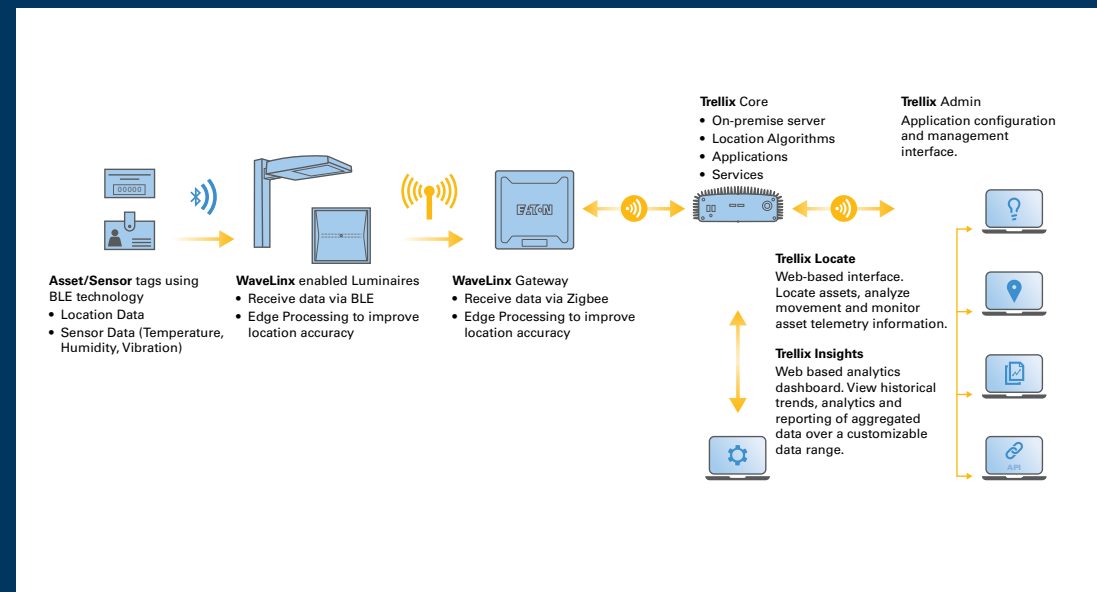
- Simplified control wiring
- Achieve more wired applications
- Control a floor or entire building



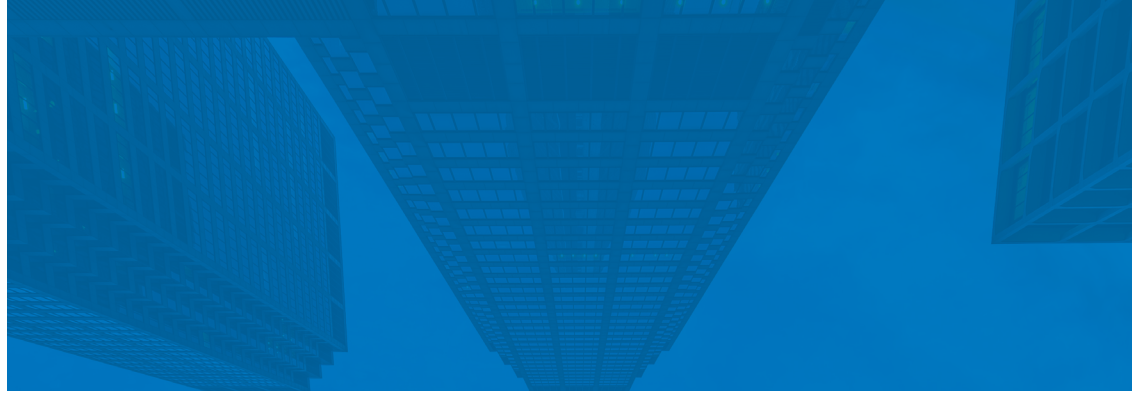
Wireless

Electrical Contractors use basic wiring practices they already know to complete projects and get off the job faster with the most comprehensive and cost effective system on the market.

- No special wiring required
- Get more jobs done faster
- Feel safe with industry best UL2900 listing
- Control a room, floor or entire building



[illegible]



Notes



Lighting Product Lines

Ametrix
AtLite
Corelite
Ephesus
Fail-Safe
Halo
Halo Commercial
Invue
io
Iris
Lumark
Lumière
McGraw-Edison
Metalux
MWS
Neo-Ray
Portfolio
RSA
Shaper
Streetworks
Sure-Lites

Controls Product Lines

Fifth Light Technology
Greengate
iLight (International Only)
iLumin
Zero 88

Connected Lighting Systems

Distributed Low-Voltage Power
HALO Home
iLumin Plus
WaveLinx
Trellix



Cooper Lighting Solutions
1121 Highway 74 South
Peachtree City, GA 30269
P: 770-486-4800
www.cooperlighting.com

Canada Sales
5925 McLaughlin Road
Mississauga, Ontario L5R 1B8
P: 905-501-3000
F: 905-501-3172

© 2021 Cooper Lighting Solutions
All Rights Reserved
Printed in USA
Publication No. BR519040EN-web
August 19, 2021 10:36 AM

Cooper Lighting Solutions is a registered trademark.

All other trademarks are property of their respective owners.

Product availability, specifications, and compliances are subject to change without notice.