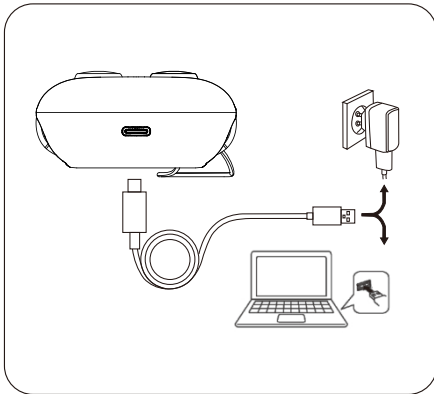


## User Guide

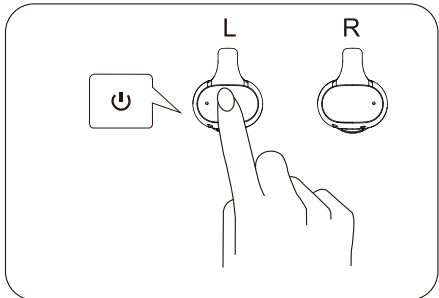
### Basic Information

Product Name	Bluetooth Wireless Headphones
Model No	Monster Airmars XKT21
Type	Clip-on type
Bluetooth	V5.3
Bluetooth Profile	AVRCP/A2DP/AVCTP/AVDTP/HFP/HSP/SPP
Bluetooth distance	≥10m
Frequency	20 ~ 20kHz
Speaker size	Φ10mm
Sensitivity	≤-84dBm
Earbuds Battery	60mAh
Charging Case Battery	400mAh
Playing Time	Earbuds: 3.5H With Charging case : 22H
Type-c Input	DC 5V≐300mA
Speaker size	8Ω±15%
Earbuds Charging Time	1.5H
Case Charging Time	1.5H
Net weight	45G

### Chanrging



### Power On/Power Off



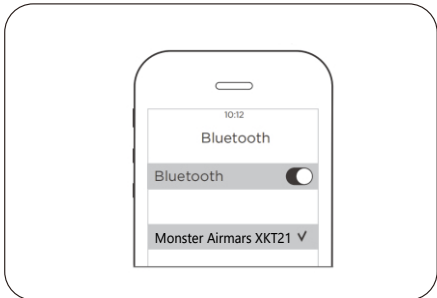
#### Power on

Take out earbuds from charging case and then long touch 2 seconds

#### Power off

Put into charging case  
Long touch 5 seconds  
Turn off the device after 5 mins without connecting the earbuds

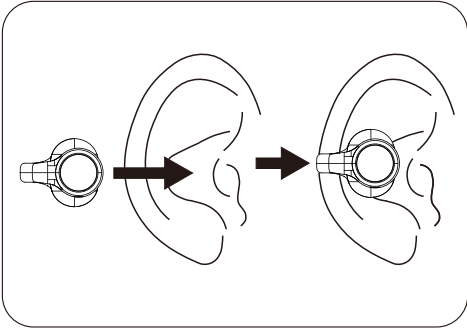
### Bluetooth Pairing



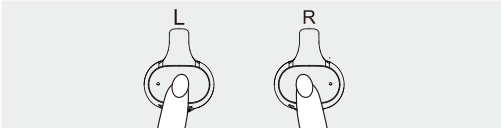
#### PAIRING

1. take out earbuds from charging case
2. Turn on your mobile phone's Bluetooth and search for the pairing name
3. Select "Monster Airmars XKT21" and connect to it
4. After Pairing successfully, earbuds play prompt voice "connctet"

### Wearing Method



### Operational approach



Operation	Left/Right
Power On/Power Off	Long press 2S/Long Press 5S
Play/Pause	Double Click
Previous/Next	Triple-click
V+ /V-	Click
Answer/Hang up	Double Click
Reject	On Call: Long press 2S
Siri Voice Assistant	Long Press 1.5S

### LED light

Earbuds Indicator Light	
Power on	Blue light 1 second
Power off	Red light 2 second
Pairing	Main earbuds: Flashing red and blue; Vice Earbuds: Light off
Connected	Light off
Charging	Blue light on
Charge Over	Blue Light off
Charging Case Indicator Light	
Charging	Red light flash
Charge Over	Red light on
Earbuds Charging	Battery >10%: White light on Battery <10%: White light flash
Earbuds Charing over	Light off

### Attentions

- Please store and use this product in normal temperature environment;
- Do not expose the product to rain or wet environment;
- Do not throw, to avoid product damage caused by falling;
- Do not disassemble, repair and transform the product;
- Do not use chemical solvent to wipe the product;
- Do not discard or put in high temperature (temperature above 60 degrees) and fire, so as not to cause danger.

### FCC Statement

This equipment has been tested and found to comply with the limits for a Class B digital device, pursuant to Part 15 of the FCC Rules. These limits are designed to provide reasonable protection against harmful interference in a residential installation. This equipment generates uses and can radiate radio frequency energy and, if not installed and used in accordance with the instructions, may cause harmful interference to radio communications. However, there is no guarantee that interference will not occur in a particular installation. If this equipment does cause harmful interference to radio or television reception, which can be determined by turning the equipment off and on, the user is encouraged to try to correct the interference by one or more of the following measures:

- Reorient or relocate the receiving antenna.
- Increase the separation between the equipment and receiver.
- Connect the equipment into an outlet on a circuit different from that to which the receiver is connected.
- Consult the dealer or an experienced radio/TV technician for help.

This device complies with part 15 of the FCC Rules. Operation is subject to the following two conditions:  
(1) This device may not cause harmful interference, and (2) this device must accept any interference received, including interference that may cause undesired operation.

Changes or modifications not expressly approved by the party responsible for compliance could void the user's authority to operate the equipment  
FCC ID:2A8PV-QSMXKT21