

## I. Download Surplife APP

Download “Surplife” APP from Apple Store and Google Play Store, or scan the QR code.

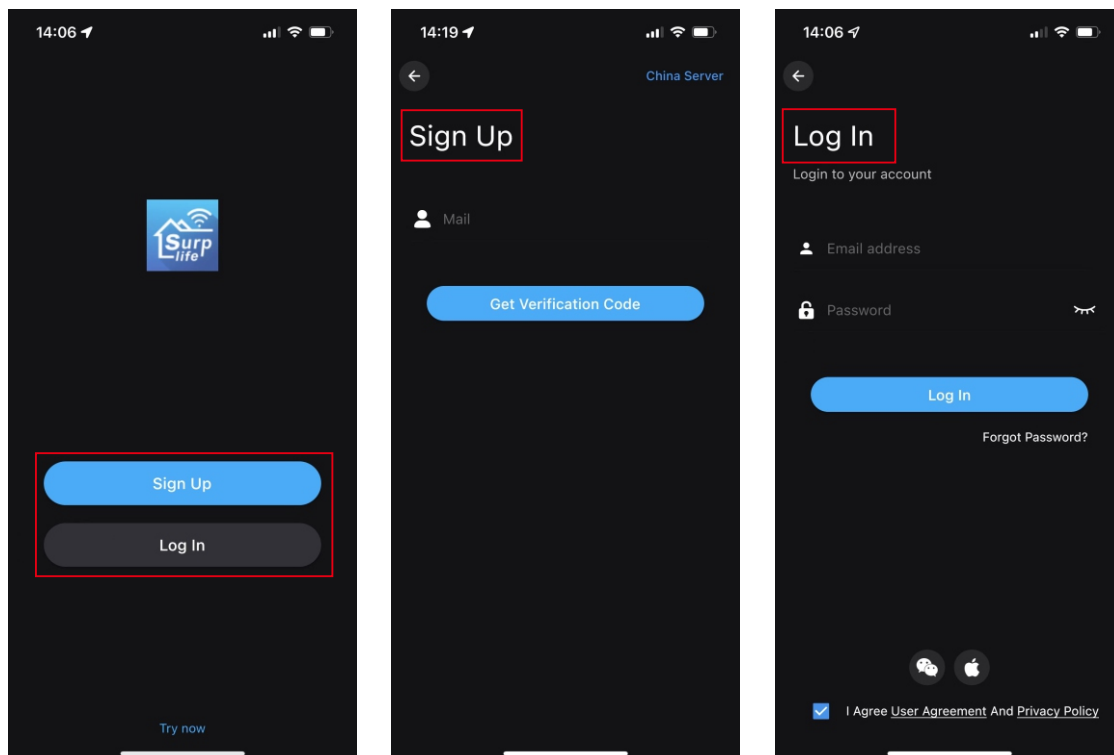


Surplife APP



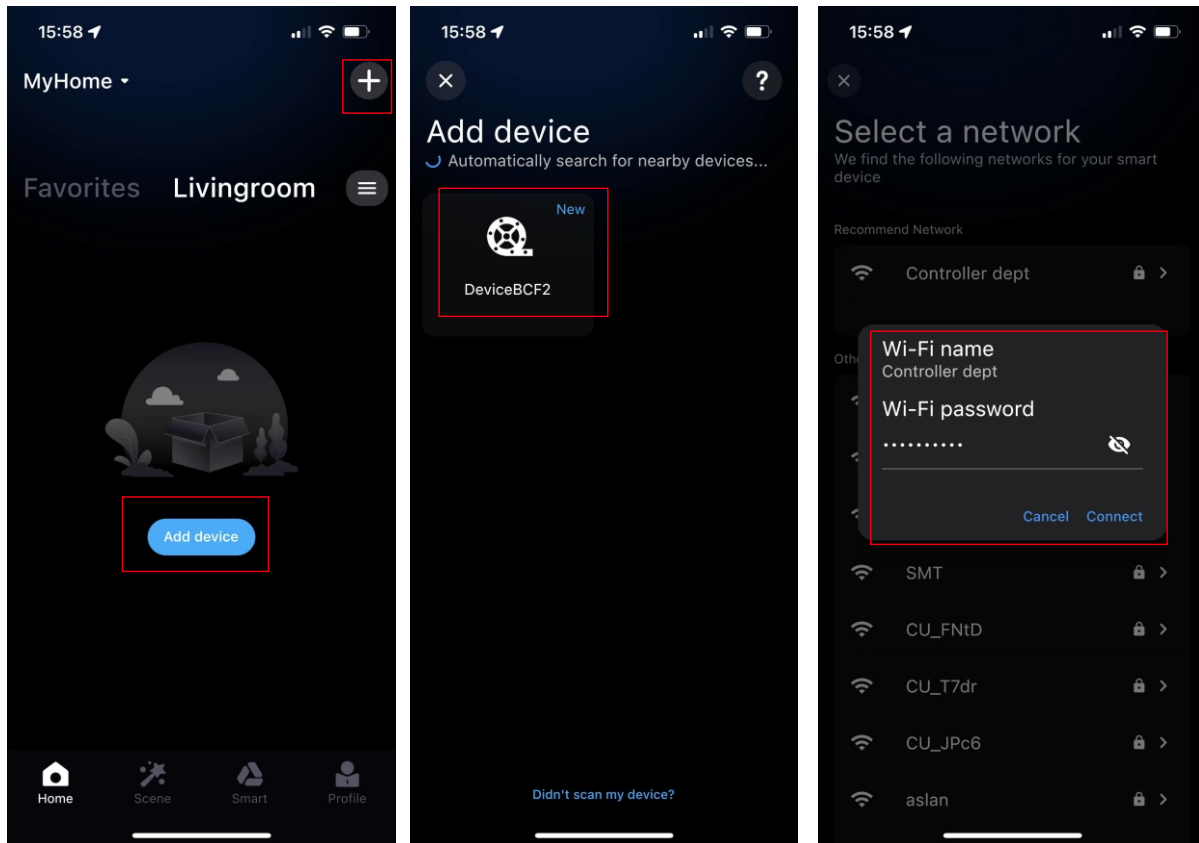
## II. How to connect the controller to Wi-Fi network?

1) Register/Login your Surplife account.



2) Open your phone Bluetooth, turn on the device.

3) Enter “Surplife” app, tap “Add Device” or click “+” to add the device. Then select your Wi-Fi network(**Only works with 2.4Ghz network**), enter the password . Subsequently,The device name can be modified and select the room after successfully connecting to Wi-Fi network.



### III. APP FUNCTION DETAILS

#### 1)Colorful Function

1)Provide 16 million colors to choose from, click “+” in the lower right corner to add different color choices.

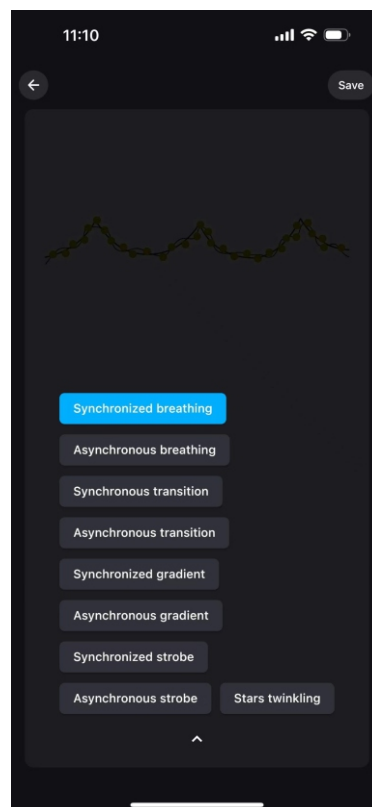
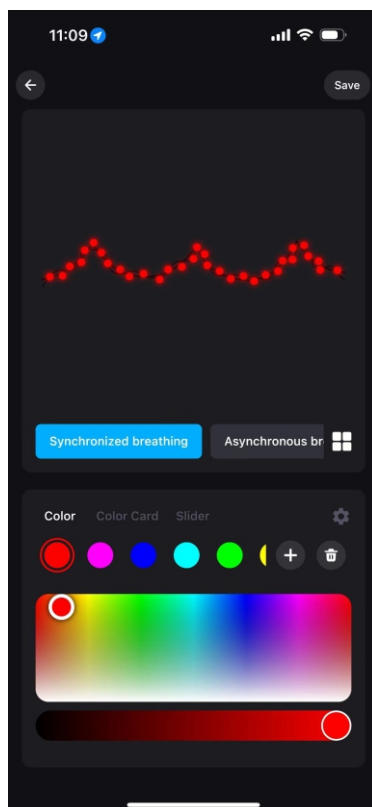
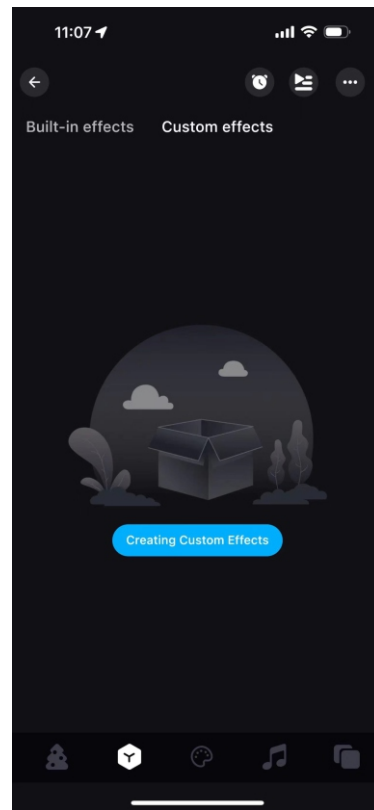
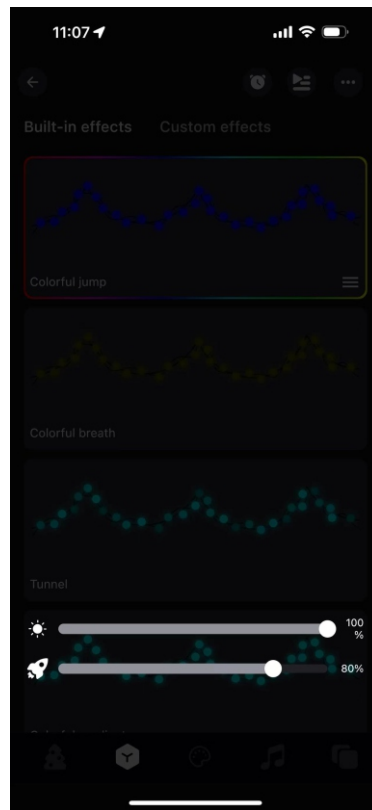
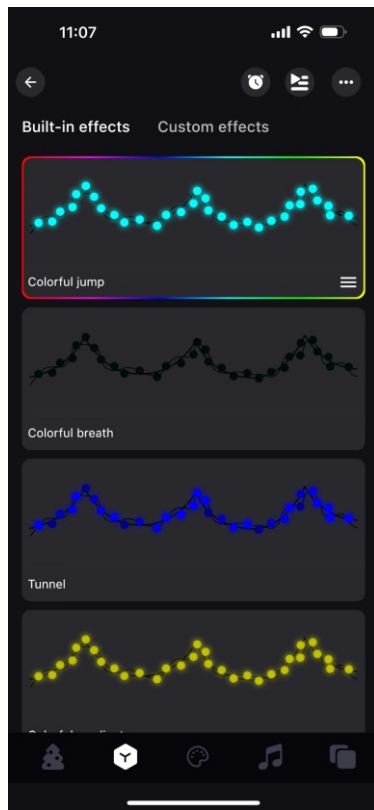
2)You can adjust the brightness.



## 2)Lighting Effects

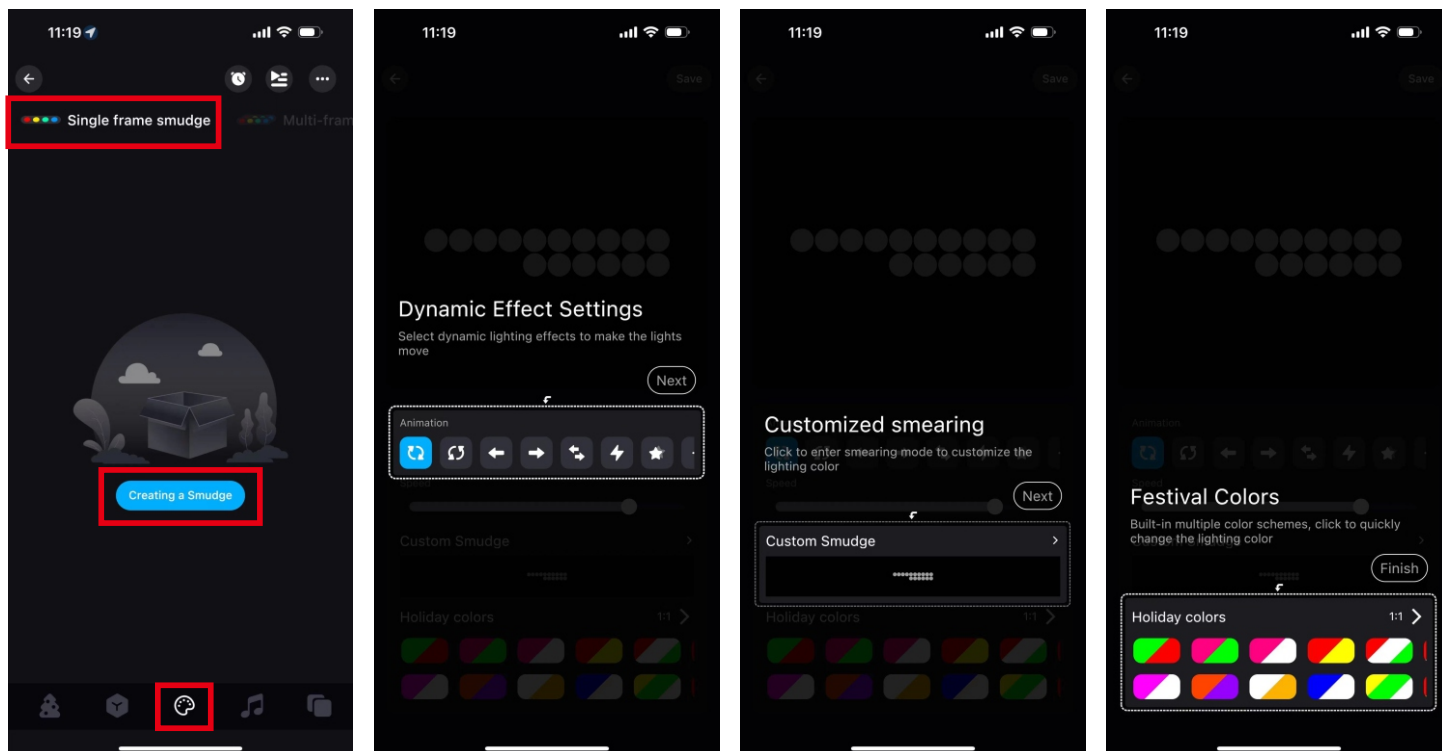
1)Long press the mode effect to create a new custom effect mode, select different colors and lighting effects; right click, the settings icon below can adjust the brightness and speed of the light.

2)You can select different light effect modes and adjust the speed brightness, density or length of the mode.



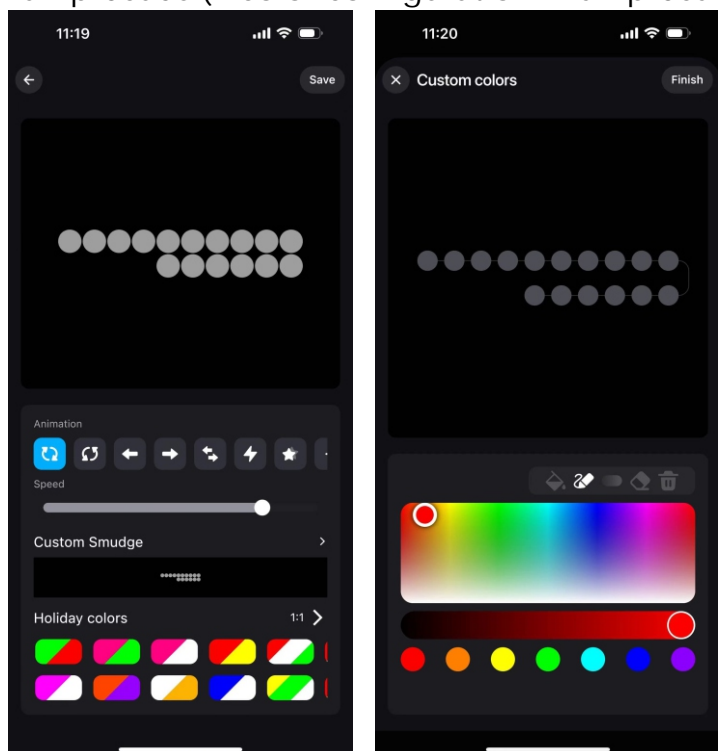
### 3)Paint function

1)Single-frame smudge: only single-frame animation can be smudged and rich animation settings can be made.



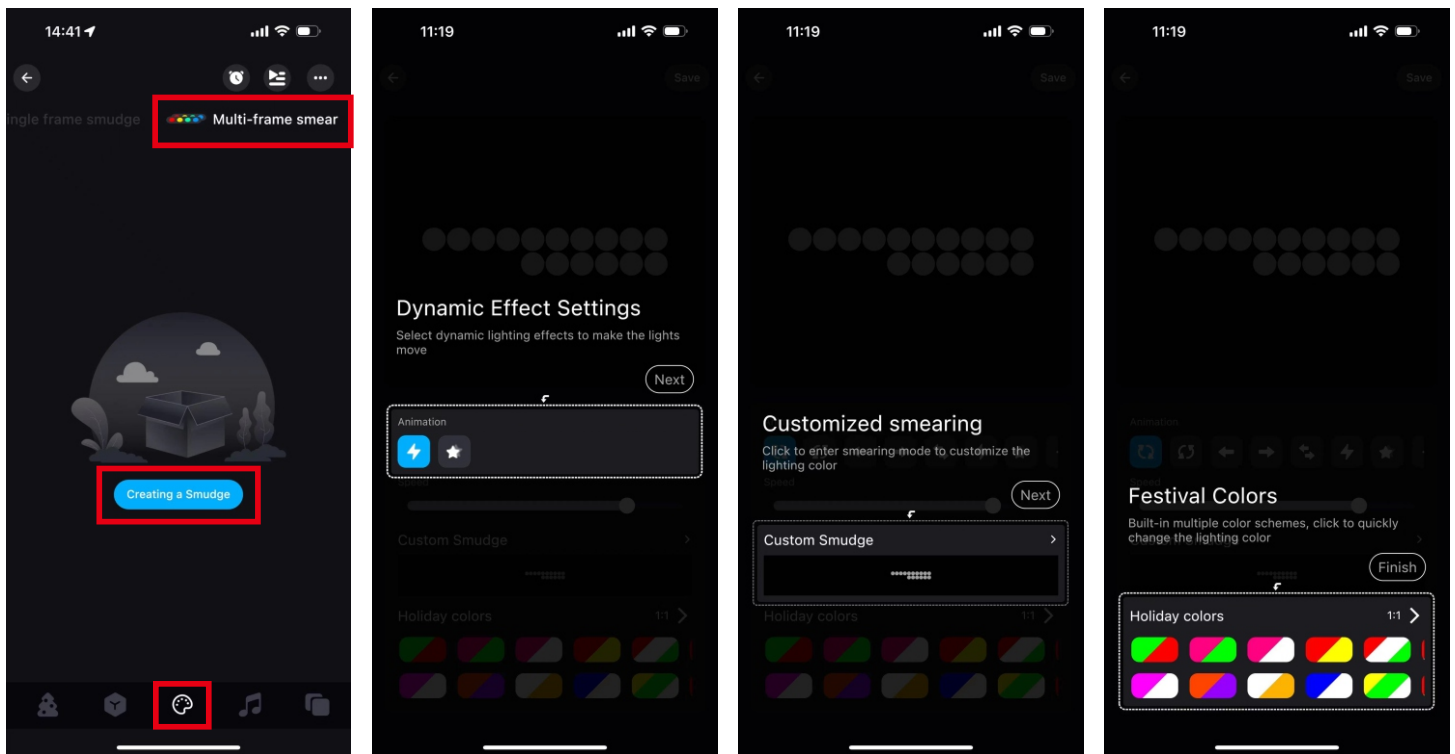
The application interface is as follows, and the application effect can be displayed in real-time on the light string.

Lamp bead 1:1 "usually refers to the configuration or layout ratio of lamp beads (1 color configuration 1 lamp bead)



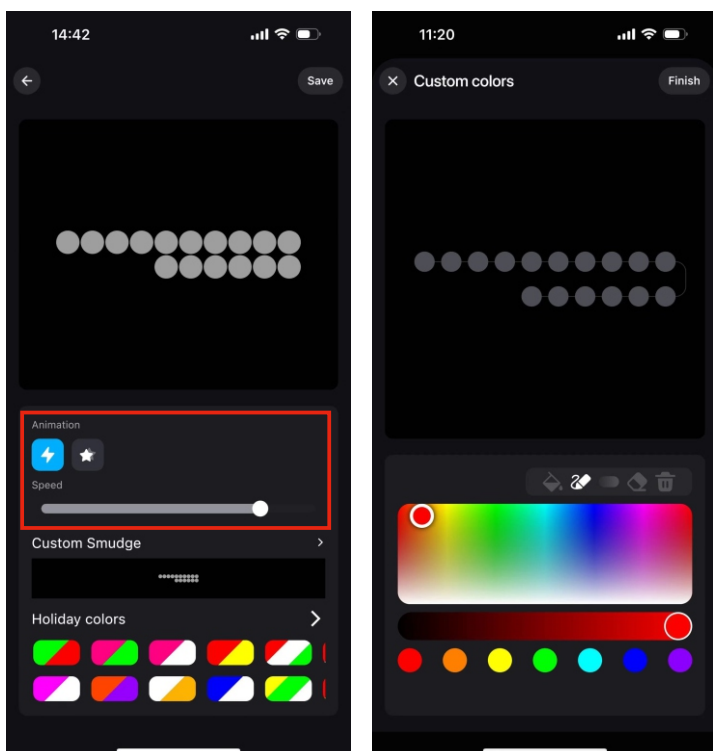
## Multi frame smudging

1)Can paint multiple frames, single frame is static by default, at least two frames for dynamic running.



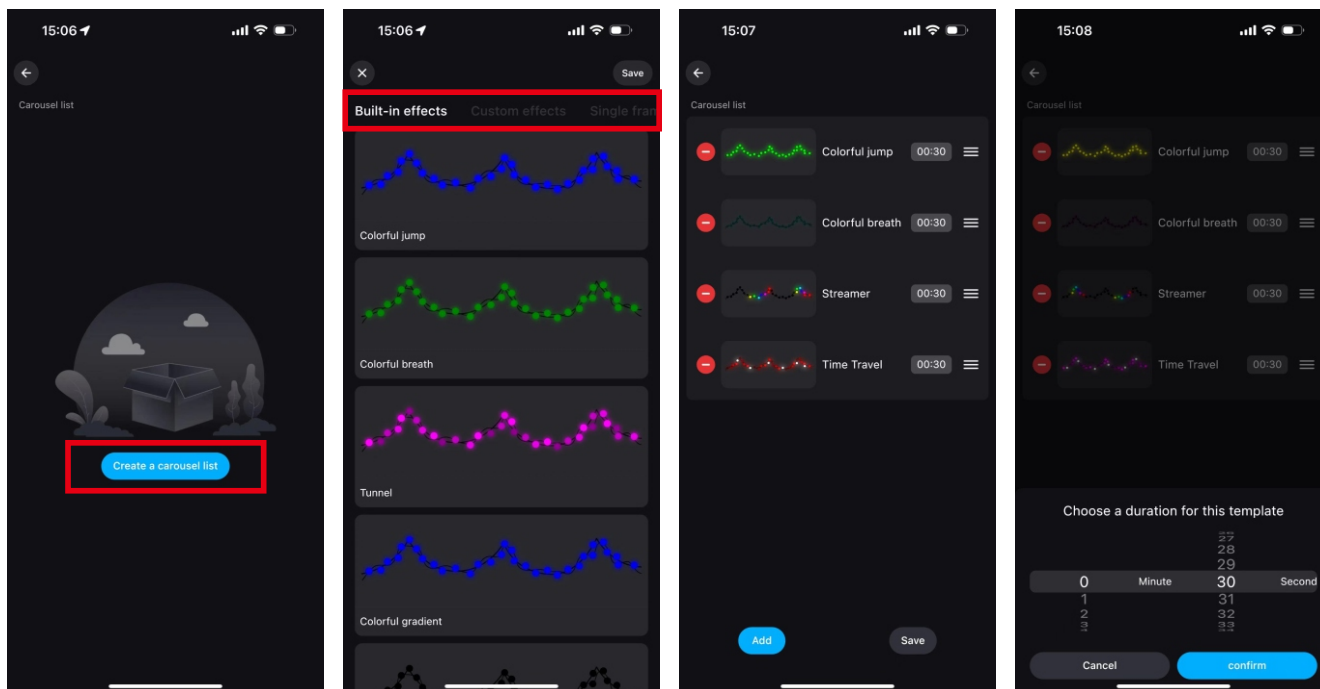
2)The paint interface is as follows, the paint effect can be displayed on the string in real time, long press can be copied, and multiple frames can be sorted.

Lamp bead 1:1 "usually refers to the configuration or layout ratio of lamp beads (1 color configuration 1 lamp bead)



#### 4)Carousel function

Select different categories of lighting effect modes to save, and set the time of lighting effects. Combine different lighting effects for sequential playback. Long press to drag the sequence to edit.

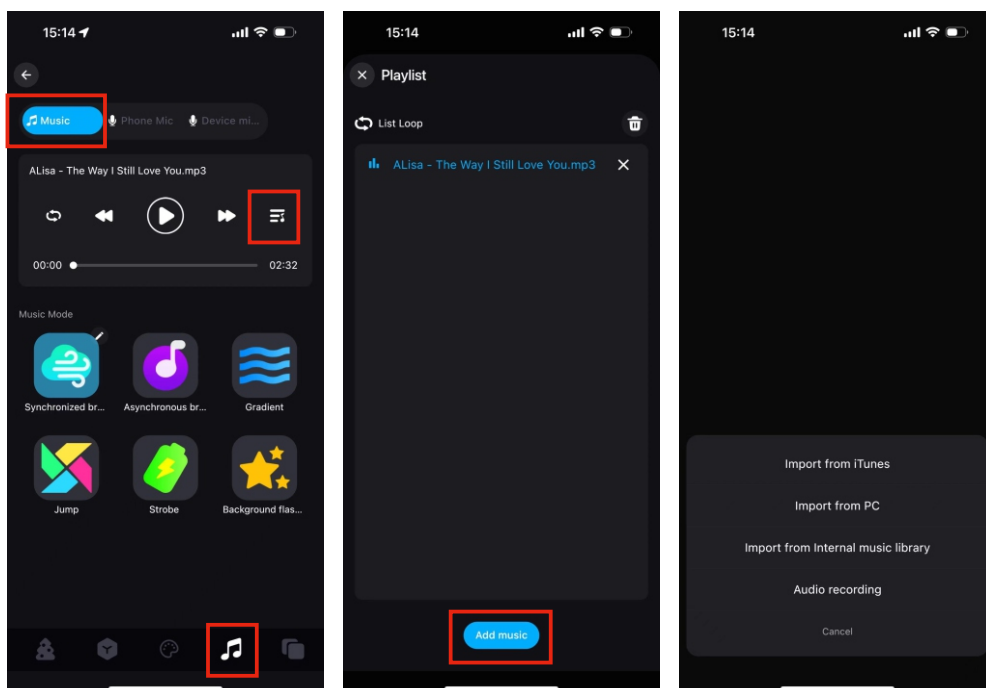


#### 5)Music rhythm

①Music Mode: The light changes with the rhythm of the music, you can choose different music modes.

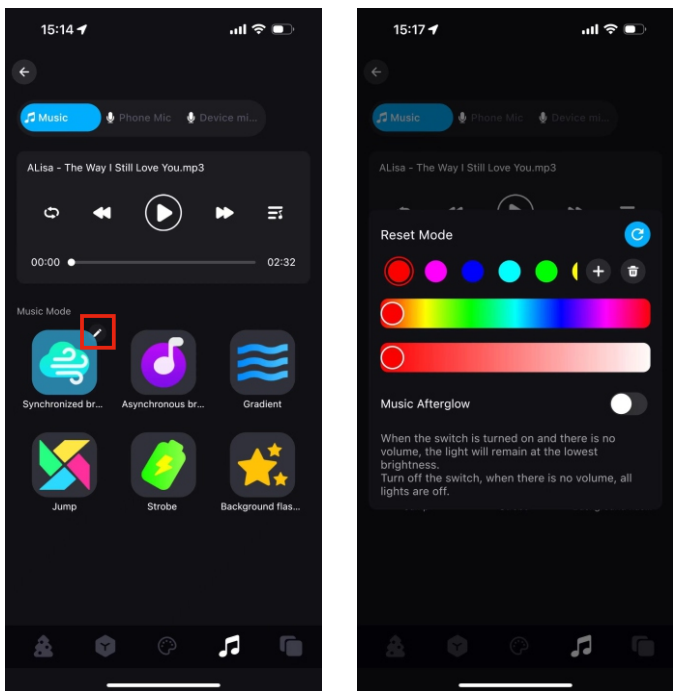
Click Add Music to import music files or import from the built-in music library.

Please note: IOS requires downloading music files to iTunes or importing music from PC according to the instructions, and selecting music from the built-in modes or recordings. Android requires downloading music files to your phone in order to use it.



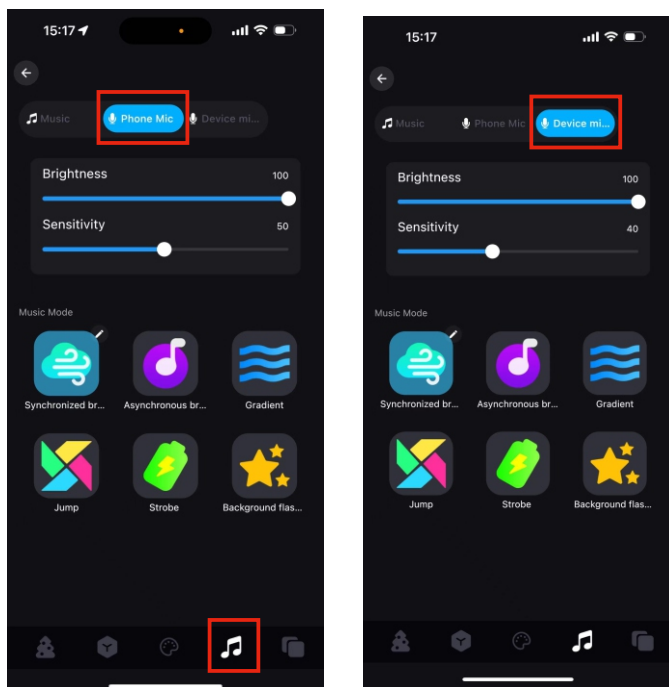
Click on the "Music Dynamic Mode" in the upper right corner to enter the mode of residual light editing

- Set the color combination you want and reset the default mode parameters by pressing the reset button



## 2) Microphone

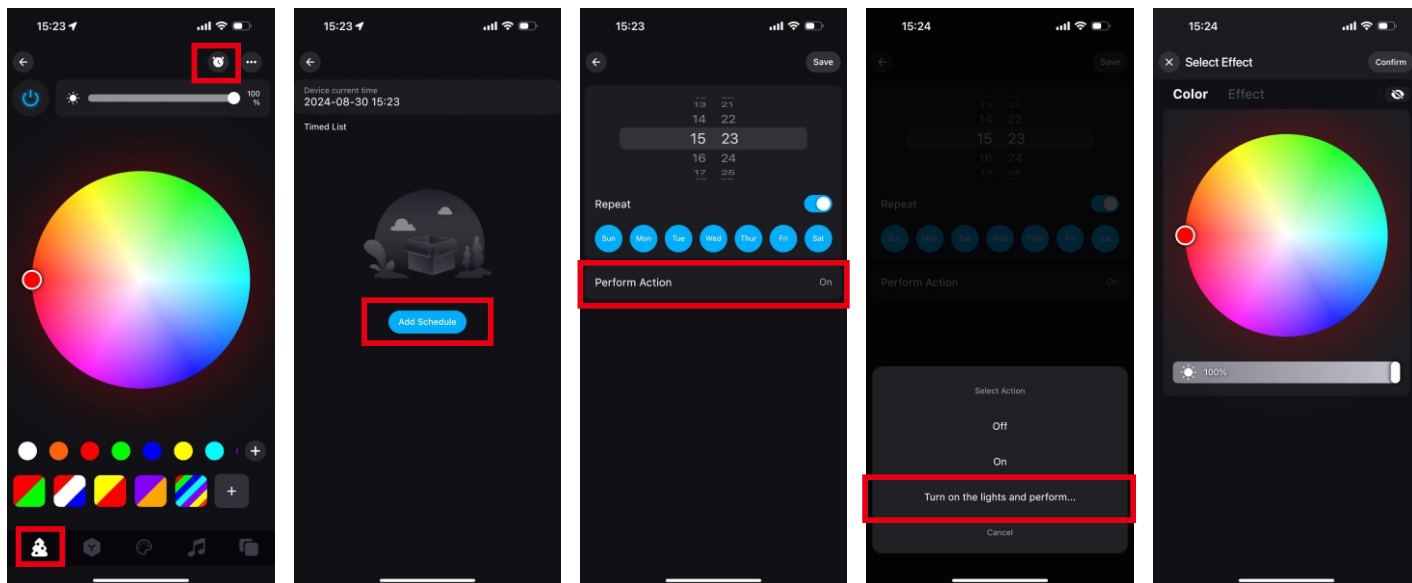
Cell phone microphone or device microphone function (voice-activated version only), according to the signal received by the microphone into different rhythms of the lighting effects, you can choose different music effects mode, you can adjust the brightness and sensitivity.





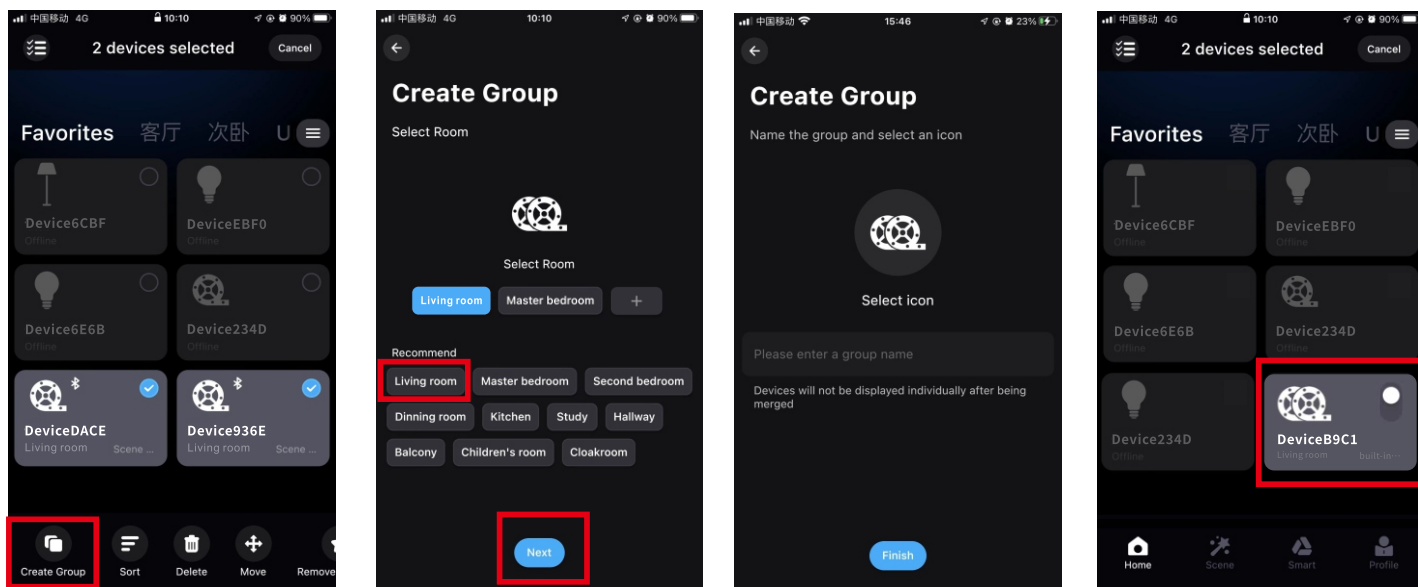
## 6)Timer function

- According to the time you set, you can switch on and off the lights under your control.
- When you turn on the light, you can freely choose different lighting effects in color or mode.



## 7)Group control function

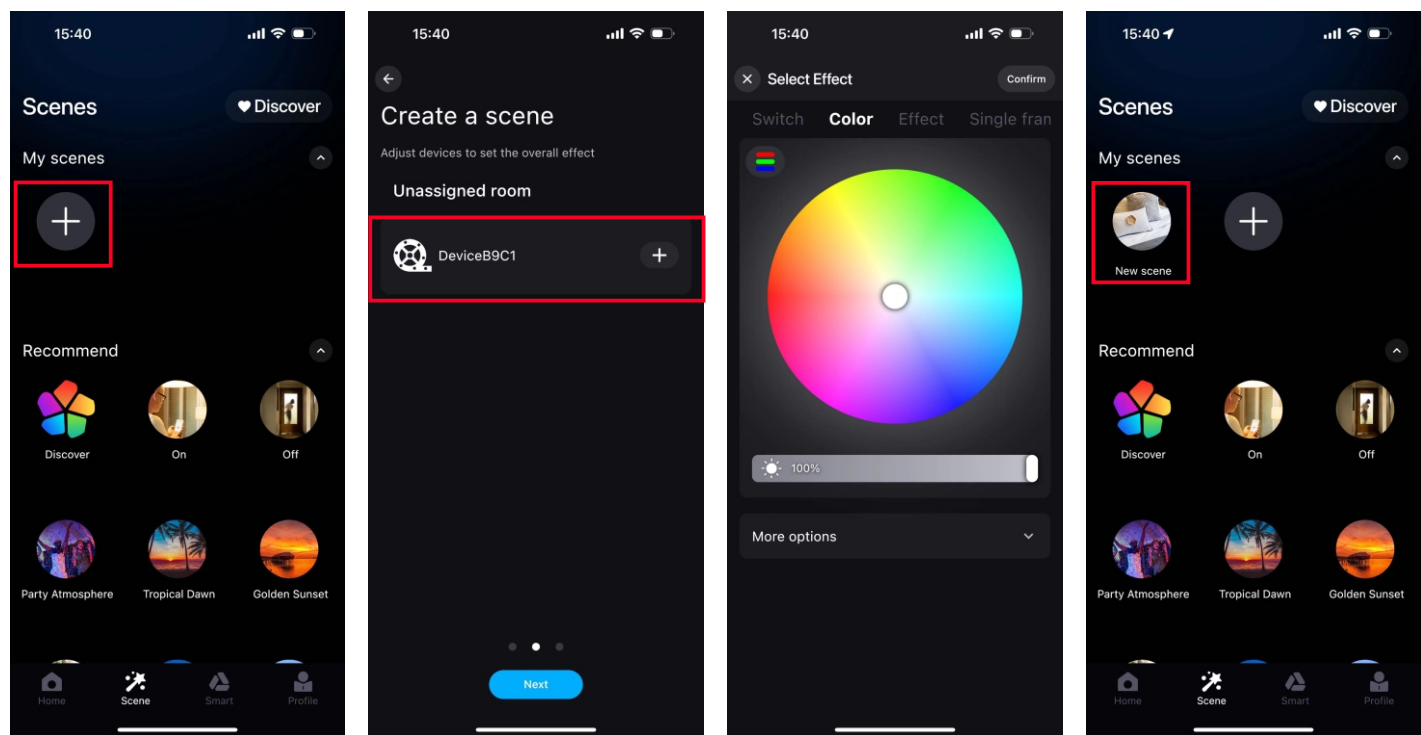
Classify multiple controllers into the same group, you can simultaneously control the equipment in the group with one key dimming and color dimming, switching and other functions.



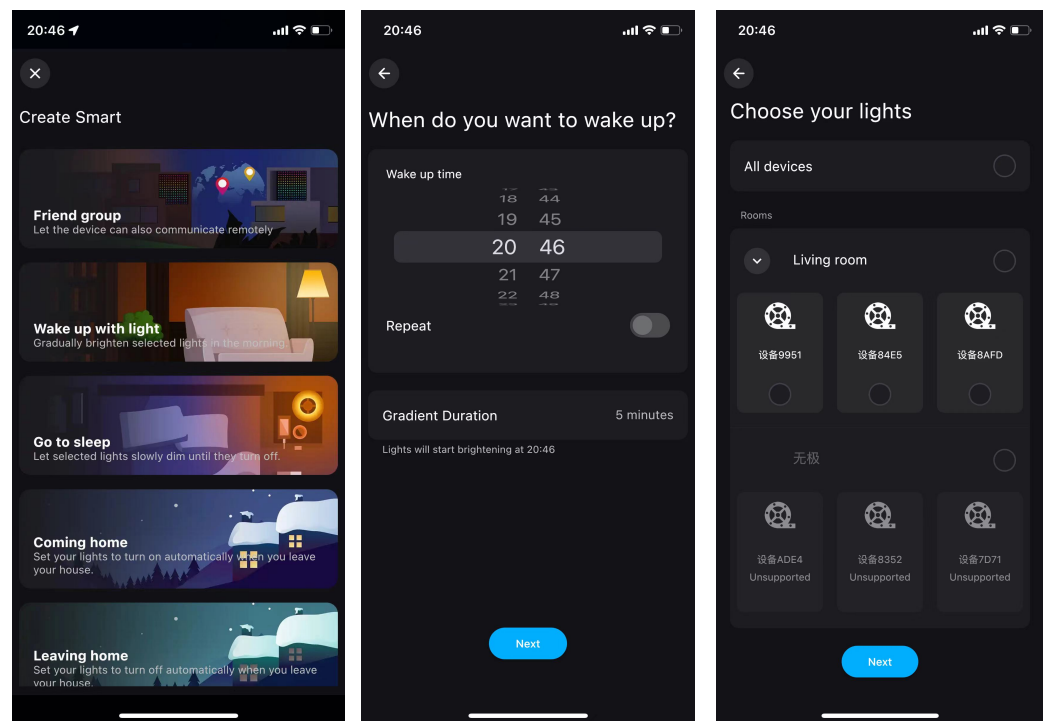


8)Scene function

In the scene interface, according to individual needs to find the corresponding controller to create different scenes of light color or dynamic effects.



9) Create Intelligence



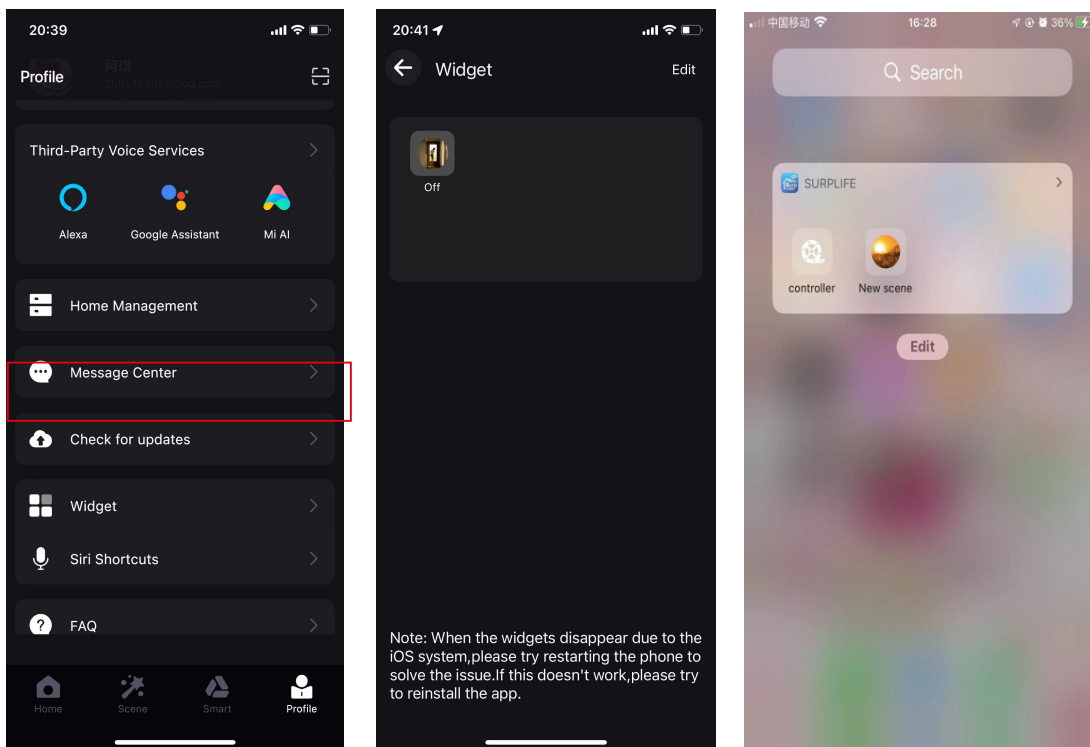
## 10) Siri Shortcuts- IOS

Note:

- 1.Siri only can control the scene.
- 2.IOS 12.0 and above systems have their own shortcut function.
- 3.Pls make sure your device is "Cloud Online".

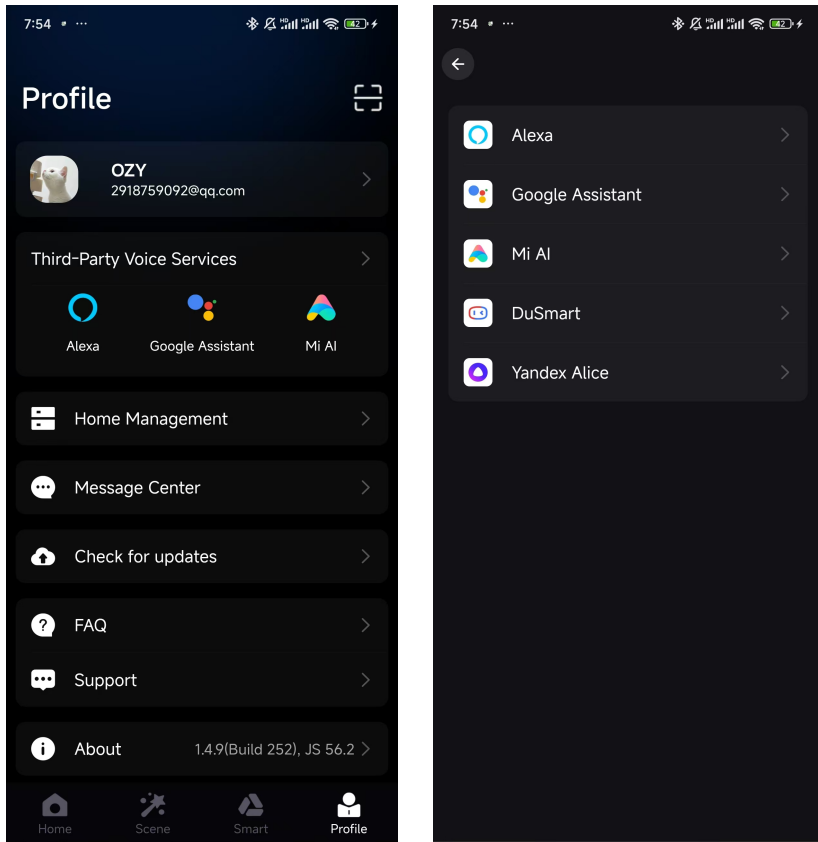
## 11) Widget Addition Steps (Set Scene Function in Advance)

Enter the page "Profile" > Tap "Widget" > Add the scene to Widget. Then Add "Surplife" app to Widget



## 12) Voice function

On the "My" page, you can choose a third-party voice service platform (Alexa, GoogleHome, Xiaoi, etc.), and connect the device according to the instructions, and the voice control can be turned on after the connection is successful, which is convenient and fast.



## Attentions

- 1) Please use the product in adryenvironment.
- 2) Forinput voltage, please use the Dcvoltage within the specified range as instructed in the manual, must not connect into220VAC directly.
- 3) The product is requested common anode connection.The wrongconnection will cause amalfunction.

**FCC Warning:**

This equipment has been tested and found to comply with the limits for a Class B digital device, pursuant to part 15 of the FCC Rules. These limits are designed to provide reasonable protection against harmful interference in a residential installation. This equipment generates, uses and can radiate radio frequency energy and, if not installed and used in accordance with the instructions, may cause harmful interference to radio communications. However, there is no guarantee that interference will not occur in a particular installation. If this equipment does cause harmful interference to radio or television reception, which can be determined by turning the equipment off and on, the user is encouraged to try to correct the interference by one or more of the following measures:

- Reorient or relocate the receiving antenna.
- Increase the separation between the equipment and receiver.
- Connect the equipment into an outlet on a circuit different from that to which the receiver is connected.
- Consult the dealer or an experienced radio/TV technician for help.

**Caution:** Any changes or modifications to this device not explicitly approved by manufacturer could void your authority to operate this equipment.

This device complies with part 15 of the FCC Rules. Operation is subject to the following two conditions:

(1) This device may not cause harmful interference, and (2) this device must accept any interference received, including interference that may cause undesired operation.

This equipment complies with FCC radiation exposure limits set forth for an uncontrolled environment. This equipment should be installed and operated with minimum distance 20cm between the radiator and your body.