

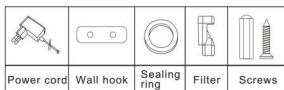
Please read the user manual carefully before using the product



## Aroma Diffuser Manual

365FEEGD

### Accessories



### Installation

Wall hook: take out the wall hook and stick it onto the wall.  
Punching hook: please punch the holes as shown in the picture below, or use the non-marking hook to locate the holes for punching.



Note: When the aroma diffuser is filled with liquid (essential oil), please do not invert, tilt or rotate it to avoid the liquid spillage and damage to the device.

### Settings

- When plugged in, the display lights up automatically.  
The default odor working mode is mode "T", the working days are Monday to Sunday, the working time is 7:00-23:00, the odor emission is 10 seconds, and the pause time is 180 seconds.
- Quick setting of odor concentration.**
- When the device is turned on and the home page is displayed, click the + button to increase the duration of odor emission, and click the - button to decrease the duration of odor emission.
  - You can freely adjust the duration of odor emission within 5 to 120 seconds according to your own preferences and needs.
  - After completing the adjustment, the device will automatically save the settings, and return to the home page after 5 seconds without any additional operations.
- During the setting process, if no other operations are performed, the device will automatically save the settings and return to the home page after 15 seconds.

3

### Product Instruction

M-150 adopts cold atomization technology to protect essential oil molecules, with evenly atomized particles, fast scent diffusion and large scent diffusion space. The aroma diffuser uses microcomputer intelligent control and it includes four modes. Each mode can set the time and the concentration of essential oil independently. 150ml essential oil container can support for a longer time work. M-150 aroma diffuser is simple and compact, you can place it on the wall or on the table. It also could be widely use in home, office, shop, hotel and other places. Whether at work or at leisure, it can create a comfortable and pleasant atmosphere for you.

### Product Specifications

Model	M-150
Noise	≤40dba
Input Voltage	DC12V = 1A
Rated Power	12W
Water Tank Capacity	150ml
Essential Oil Dosage	0.2-0.7 ±0.1ml/hour
Diffuser Net Weight	540g
Diffuser Material	Polypropylene (PP)
Coverage	100-300 m³
Product Dimensions	146mm*67mm*212mm

1

### Menu Introduction



- Device on/off Settings.**
- When the device is turned on and the home page is displayed, press and hold the clock (⌚) button for 5 seconds to turn it off.
  - When the device is powered on but turned off, press and hold the clock button for 5 seconds to turn it on.
  - During the setting process, if no other operations are performed, the device will automatically save the settings and return to the home page after 15 seconds.
- Factory Reset.**  
When the device is turned on, press and hold the (⌚) button for 3 seconds, and the aromatherapy diffuser will be automatically restore to factory settings. This action will clear all personal settings and return to the factory status.
- Factory default working mode.**
- Mode "T", the working day are Monday to Sunday, the working time is 7:00-23:00, the odor emission is 10 seconds, and the pause time is 180 seconds.
  - The other three modes: the working time is 00:00-00:00, i.e. not started.

4

### Maintenance

- Please maintain the aroma diffuser every 3 months to ensure that the diffuser continuously emits fresh scent and prolong its service life.
- Take out the parts of the atomizer, and remove the oil bottle.
  - Clean the tubing filter with alcohol every time the essential oil is replaced.
  - Pour some alcohol into the oil bottle and reinstall the bottle on the device, then turn on the device to run for 10 minutes.
  - If there is no mist when the device starts working after cleaning, please check whether the "filter" is clogged. It can be dredged with a blower or a fine needle to ensure that the "filter" is clean and non-clogged.

### Troubleshooting

Problems	Solutions
Device dose not work	<ul style="list-style-type: none"><li>-Check that the adapter is correctly connected.</li><li>-Check if the power is on.</li><li>-Check the setting of the device working time.</li></ul>
No mist is emitted	<ul style="list-style-type: none"><li>-Check if the pump is working normally and the nozzle is blocked.</li><li>-Check if the diffuser outlet sealing ring is damaged or dropped.</li><li>-Check if the oil pipe is blocked or dropped.</li></ul>
Mist emits weakly	<ul style="list-style-type: none"><li>-Check if the sealing ring of the diffuser outlet pipe is damaged.</li><li>-Check if the nozzle is blocked.</li><li>-Check if the connection between atomizer and nozzle is loose.</li></ul>
Oil leak	<ul style="list-style-type: none"><li>-Check if the atomizer is broken.</li><li>-Check if the gasket is broken and needs to be changed.</li><li>-Check if the connection of oil bottle and atomizer is tight.</li></ul>
Abnormal noise	<ul style="list-style-type: none"><li>-Pump is loose, fix it.</li><li>-Pump is damaged, replace it with a new pump.</li><li>-Check if the fan is installed properly.</li></ul>

2

### Local Time Settings

- Steps of local time setting.**
- When the device is turned on and the home page is displayed, click the clock (⌚) button to enter the local time setting.
  - Use the (+/-) button to adjust the values of hours and minutes.
  - After adjusting the local time, press the clock button to confirm, and then enter the interface of week correction.
  - After the week correction, press the clock button to save the local time setting and exit the setting interface.
- (+ button: increase value, - button: decrease value.)

### Customized working mode settings: 1-4

- Setting of the odor working mode.**  
When the device is turned on and the home page is displayed, click the mode button to set the odor working mode. Press the +/- button to select four odor working modes "1, 2, 3 and 4".  
For example, select mode "1" to set the odor working mode, and the steps are as follows (the other three modes are set in the same way).
- Odor working day setting.**  
Click the mode button to select mode "1", and then click the mode button again to set the odor working day. Use the +/- button to select Monday to Sunday, Monday to Friday, Saturday to Sunday. After selecting, click the mode button to confirm saving, and then proceed to the next step.
  - Odor working time setting.**  
Click the mode button to set the odor working time. Use the +/- button to set the odor start time 00:01-23:59 and the odor end time 00:01-23:59, and then click the mode button to confirm saving.
  - Odor concentration setting.**  
Click the mode button to enter the odor concentration working time setting. Use the +/- button to select the odor emission time, ranging from 5 seconds to 120 seconds. After selecting, click the mode button to confirm saving, and then proceed to the next step.
  - The odor working pause setting.**  
Click the mode button to set the odor pause time. Use the +/- button to select the pause time ranging from 100 seconds to 1200 seconds. Then click the mode button to confirm saving.
- Note: if the device is required to run in different time periods on the same day, there should be no repeated working hours between the modes, otherwise the system will not recognize it.
- For example:**
- Set the odor working mode 1, and the working time is 09:30-21:00.
  - Set the odor working mode 2, and the working time is 14:30-22:00.
- Set the working time of each mode according to your preference. In this way, the aroma diffuser will work according to the mode you set for the specified period of time.

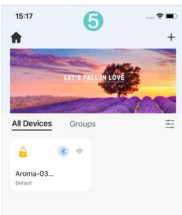
5

## 365FEEGD Aroma Diffuser Bluetooth Connection Manual



### Aroma delivery APP (Android/iOS)

Please read the user manual carefully before use.



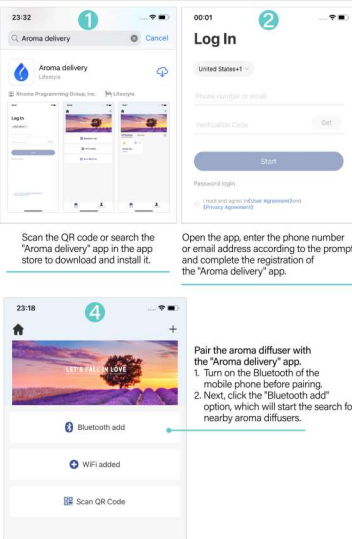
Once connected, the aroma diffuser will be displayed on the home screen.

If you want to add multiple devices for application control, please click the "+" icon in the upper right corner to add devices (the steps are the same as the previous Bluetooth pairing).

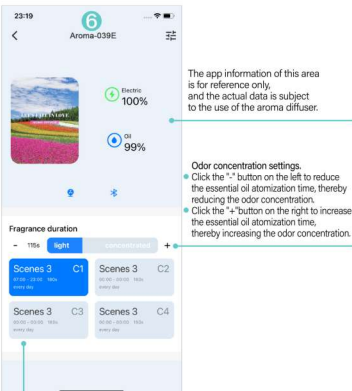
In the app, you can control multiple devices at the same time. In order to manage these devices better, you can set different names and classifications for each device.

- Note:**
- Only when the aroma diffuser is open and running, can it be set through the application.
  - When the aroma diffuser is on, if the application can not be connected or set normally, please close the application and reboot it.

3

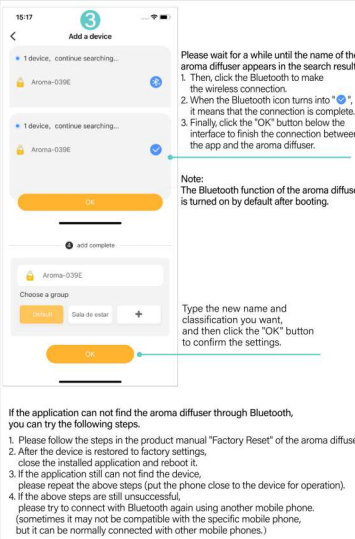


1

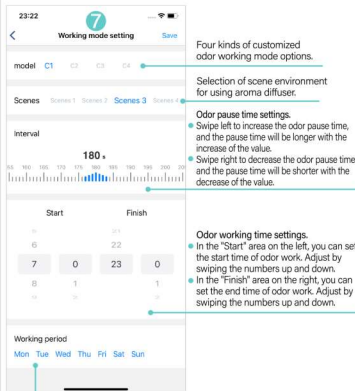


The aroma diffuser has four customized odor working modes, which are "C1-C4". We choose "C1" mode for setting. (The setting steps of the other three modes are the same as the "C1" mode.)

4



2



5

This device complies with part 15 of the FCC Rules. Operation is subject to the following two conditions: (1) This device may not cause harmful interference, and (2) this device must accept any interference received, including interference that may cause undesired operation.

Any Changes or modifications not expressly approved by the party responsible for compliance could void the user's authority to operate the equipment.

**Note:** This equipment has been tested and found to comply with the limits for a Class B digital device, pursuant to part 15 of the FCC Rules. These limits are designed to provide reasonable protection against harmful interference in a residential installation. This equipment generates uses and can radiate radio frequency energy and, if not installed and used in accordance with the instructions, may cause harmful interference to radio communications. However, there is no guarantee that interference will not occur in a particular installation. If this equipment does cause harmful interference to radio or television reception, which can be determined by turning the equipment off and on, the user is encouraged to try to correct the interference by one or more of the following measures:

- Reorient or relocate the receiving antenna.
- Increase the separation between the equipment and receiver.
- Connect the equipment into an outlet on a circuit different from that to which the receiver is connected.
- Consult the dealer or an experienced radio/TV technician for help.

#### FCC Radiation Exposure statement

The device has been evaluated to meet general RF exposure requirement. The device can be used in portable exposure condition without restriction.