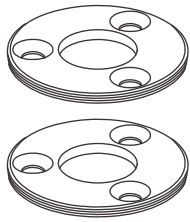


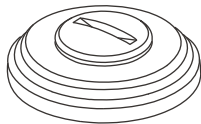
Thumbturn

INSTRUCTIONS

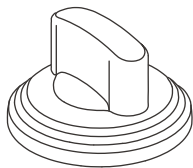
INCLUDED



Mounting
plate x2



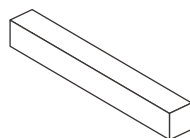
Coin turn x1



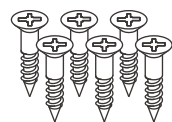
Thumbturn x1



Plastic spacer x1

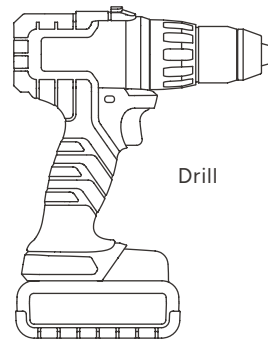


Spindle x1



Wood screw x6

TOOLS YOU'LL NEED



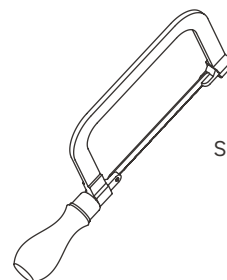
Drill



2mm drill bit

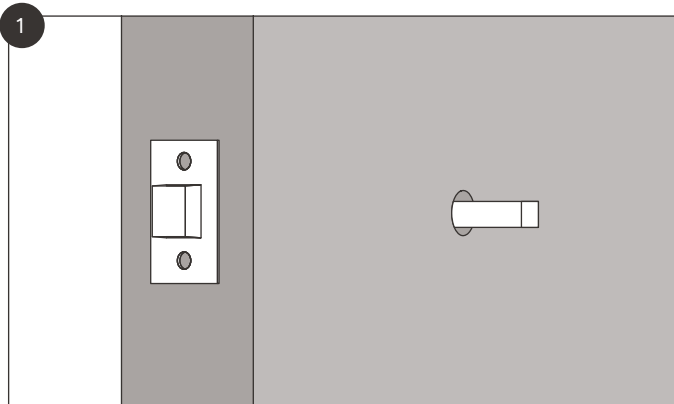


Crosshead screwdriver (PH1)

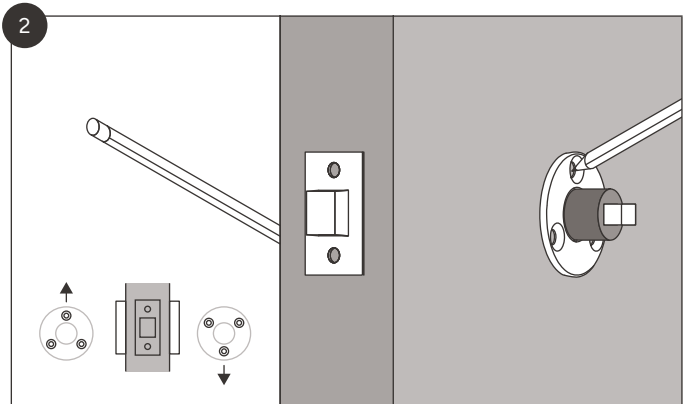


Saw

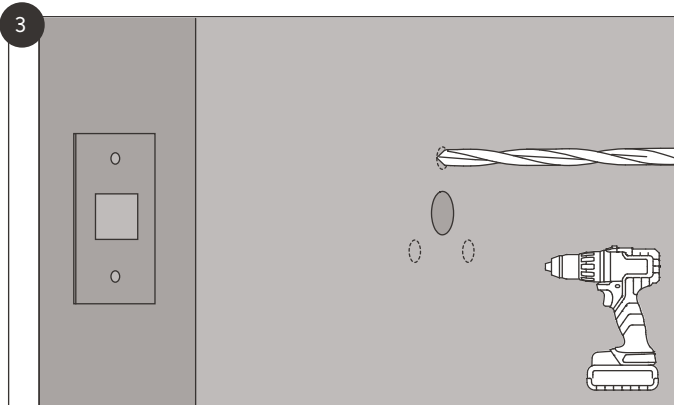
Thumbturn instructions



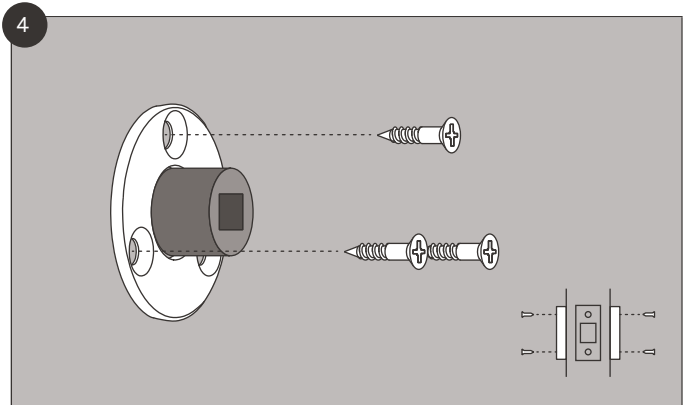
1 Fit the lock into the door. See lock fitting instructions if not already installed.



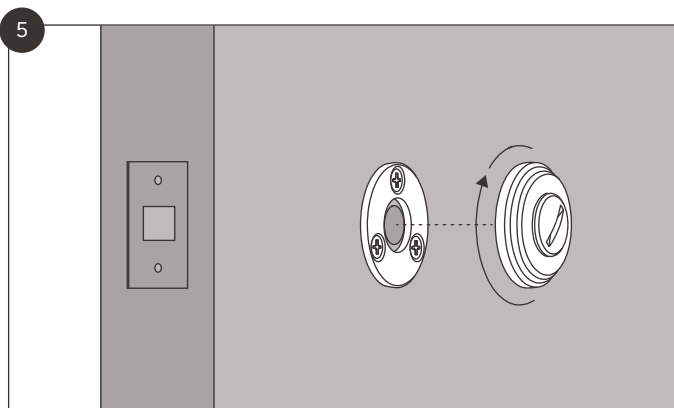
2 Place a mounting plate and spacer over the centre of the spindle hole and mark the mounting plate holes. Do the same on the opposite side of the door.



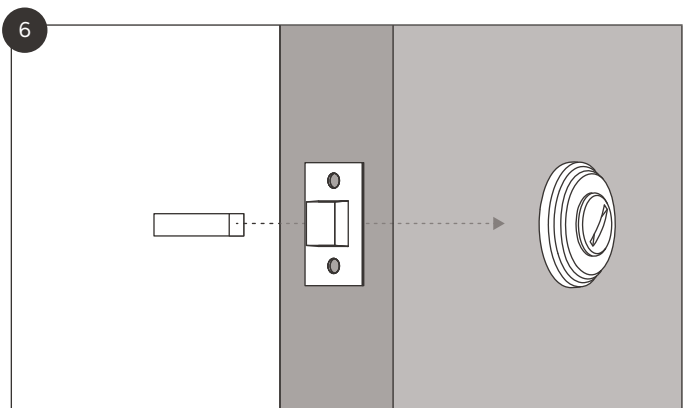
3 Use a 2mm drill bit to drill pilot holes where marked.



4 Use the wood screws to secure both mounting plates to the door. Use the spacers to accurately align the plates.

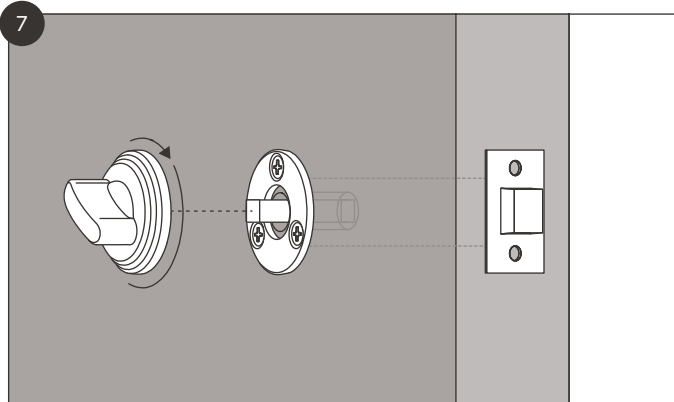


5 Screw the threaded coin turn onto the mounting plate on the outside of the door.

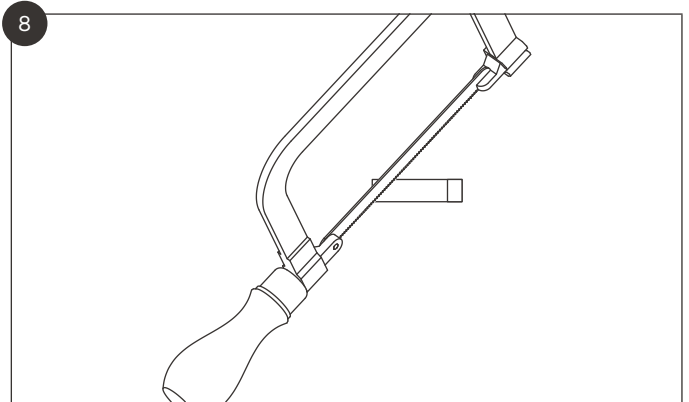


6 Slide the spindle through the lock and into the coin turn.

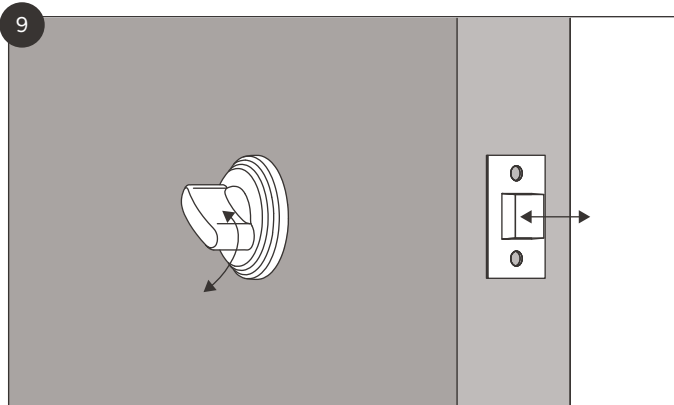
Thumbturn instructions



Screw the threaded thumbturn onto the mounting plate on the inside of the door.



Please note: If the spindle is too long, cut it to the correct length and reassemble.



Test the thumbturn to ensure it's engaging the lock correctly.

TROUBLESHOOTING

Check that the mounting plates are aligned properly through the lock. If they're misaligned, the movement of the thumbturn may not be smooth.

Check the faces of the door are even and level, without any excess paint that can prevent the mounting plates from sitting flat on the door surface.

CARE INSTRUCTIONS

Use a damp cloth to maintain the handles, avoiding chemical cleaners.