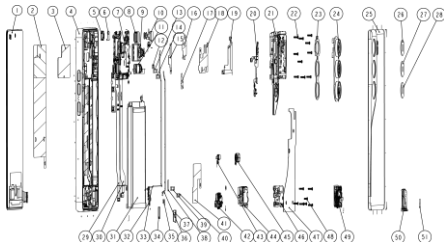


TECNO

TECNO CAMON 40

User Manual

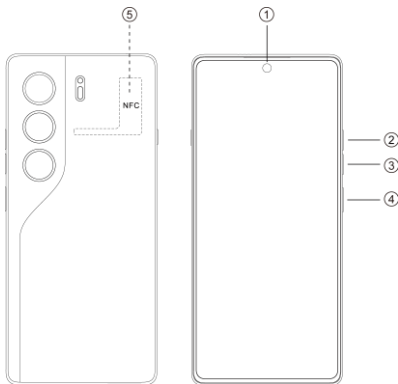
Exploded diagram specification



1	OLED LCM	2	GRAPHITE LCM
3	G RAD PLATE LCM	4	MID FRAME ASM
5	FRONT CAM FRAME	6	FRONT CAM FRAME MYLAR
7	MAIN BOARD	8	BOX UP
9	REAR MAIN CAM	10	FRONT CAM
11	REAR CAM 8M	12	BAT BTB RUBBER
13	SIM MAIN BTB RUBBER	14	MAIN FPC BTB RUBBER
15	FRONT CAM GRAPHITE	16	MAIN CAM CU FOIL
17	REAR CAM 8M CU FOIL	18	MAIN BOARD GRAPHITE
19	NFC	20	REAR FLASH FPC
21	UP FRAME ASM	22	SCREW1
23	R CAM DUST MYLAR	24	REAR CAM FRAME ASM
25	BAT ASM	26	MAIN CAM LENS
27	8M CAM LENS	28	GLA CAM LENS
29	MAIN FPC	30	SIM FPC
31	BAT	32	ANT BOARD
33	COAXIAL LINE1	34	LCM BTB RUBBER
35	FP BTB RUBBER	36	COAXIAL LINE2
37	LCM FPC RUBBER	38	DOWN SPK ED CLOTH
39	SIM BTB RUBBER DOWN	40	MAIN FPC SUB BTB RUBBER
41	DOWN SPK GRAPHITE	42	SUB BOARD
43	FINGERPRINT	44	DOWN SPK
45	SUB VIB	46	DOWN FFRAME ASM

47	UP FRAME GRAPHITE	48	SCREW2
49	SIM BOARD	50	SIM CARD HOLDER
51	SIM HOLE SEAL MYLAR		

Know your phone



1. Front camera
2. Volume + button
3. Volume - button
4. Power button
5. NFC

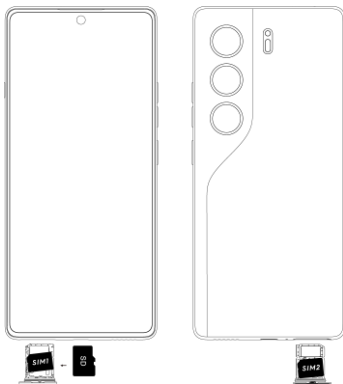
SIM card installation

1. Power off your phone.

2. Refer to the following picture for SIM/SD card installation.

a) If dual SIM cards are supported, install as shown in the following picture.

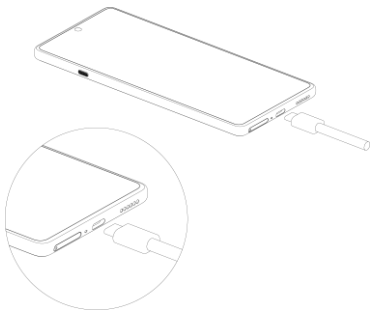
b) If a single SIM card and a single SD card are supported, install in the direction indicated by the arrow in the following picture.



Charging the phone

You can charge your phone with a charger or by connecting it to a computer using a USB cable (comes with the phone).

Use only TECNO chargers and cables. Other chargers or cables may damage the phone and invalidate its warranty.



FCC Caution

Labelling requirements.

1.This device complies with Part 15 of the FCC Rules. Operation is subject to the following two conditions:

(1) This device may not cause harmful interference.

(2)This device must accept any interference received, including interference that may cause undesired operation.

2. Changes or modifications not expressly approved by the party responsible for compliance could void the user's authority to operate the equipment.

Information to the user.

Note: This device has been tested and found to comply with the limits for a Class B digital device, pursuant to part 15 of the FCC Rules. These limits are designed to provide reasonable protection against harmful interference in a residential installation. This device generates, uses and may radiate radio frequency energy and, if not installed and used in accordance with the instructions, may cause harmful interference to radio communications. However, there is no guarantee that interference will not occur in a particular installation. If this device does cause harmful interference to radio or television reception (able to be determined by turning the device off and on), the user is encouraged to try to correct the interference by one or more of the following measures:

-Reorient or relocate the receiving antenna.

-Increase the separation between the device and receiver.

-Connect the device to an outlet on a circuit different from that to which the receiver is connected.

-Consult the dealer or an experienced radio/TV technician for help.

Specific Absorption Rate (SAR) information:

This mobile phone meets the government's requirements for exposure to radio waves. The guidelines are based on standards developed by independent scientific organizations through periodic and thorough evaluation of scientific studies.

The standards include a substantial safety margin designed to assure the safety of all persons regardless of age or health.

FCC RF Exposure Information and Statement. The SAR limit of USA (FCC) is 1.6W/kg averaged over one gram of tissue. Device types: CM5 (FCC ID:2ADYY-CM5) has also been tested against this SAR limit. The highest SAR value reported under this standard during product certification for use at the ear is 0.267 W/kg and when properly worn on the body is 0.802 W/kg.

Body-worn Operation

This device was tested for typical body-worn operations. To comply with RF exposure requirements, a minimum separation distance of 1.0 cm must be maintained between the user's body and the handset, including the antenna. Third-party belt-clips, holsters, and similar accessories used by this device should not contain any metallic components. Body-worn accessories that do not meet these requirements may not comply with RF exposure requirements and should be avoided. Use only the supplied or an approved antenna.

Dolby, Dolby Atmos, and the double-D symbol are registered trademarks of Dolby Laboratories Licensing Corporation. Manufactured under license from Dolby Laboratories. Confidential unpublished works. Copyright © 2012-2024 Dolby Laboratories. All rights reserved.

TECNO

HiOS runs on Android™ OS.
Android is a trademark of Google LLC.